

DB228

120-174 MHz Broad Band Gain Antenna

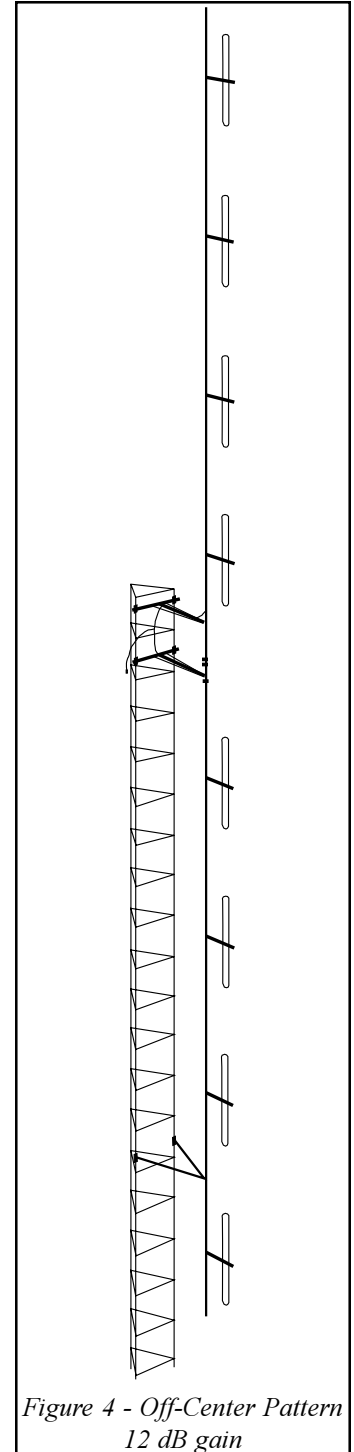
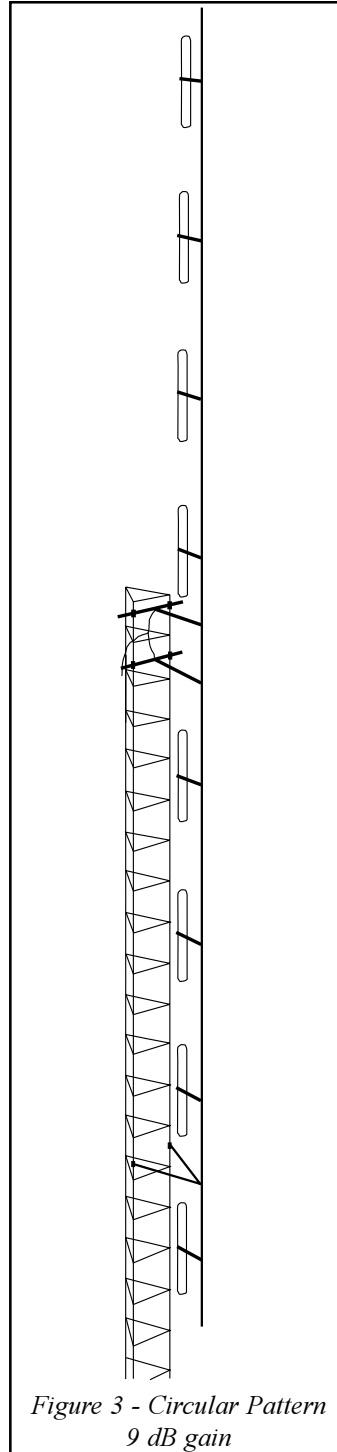
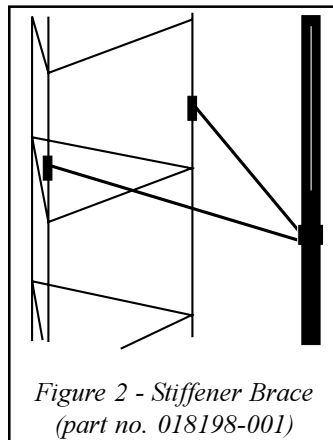
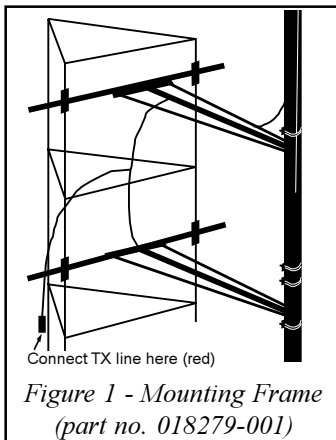
Assembly and Installation Instructions

PRODUCT DESCRIPTION

The DB228 antenna array combines two DB224E antennas that are mounted and phased together.

ASSEMBLY AND INSTALLATION

1. Assemble each DB224E antenna according to the enclosed instructions.
2. Attach the antenna mounting frame to the top of the tower as shown in Figure 1; the arrow should point upwards.
3. For a circular pattern, mount both DB224E antennas to the mounting frame as shown in Figure 3. For an off-center pattern, mount both antennas to the mounting frame as shown in Figure 4.
4. Connect both antenna feed cables to the phasing harness and wrap the connections thoroughly with Vapor-Wrap (part number 11317 or 11316). Work the compound into all cracks and smooth over the outer jackets to ensure a water tight seal.
5. To reach the proper connecting points, the lengths of the phasing harness cables may be longer than necessary; however, the cables should *not* be cut since these lengths are critical. Carefully fold any surplus cable and secure it to the antenna mast or mounting frame.
6. Connect the station transmission line to the remaining pigtail of the phasing harness (marked with red tape) and thoroughly wrap the connection with Vapor-Wrap.
7. To complete the mounting procedure, attach the stiffener braces to the lower antenna as shown in Figure 2. Be careful not to crush the cables.



Warning!
Installation of this product near power lines is dangerous.
For your safety, follow proper installation procedures.