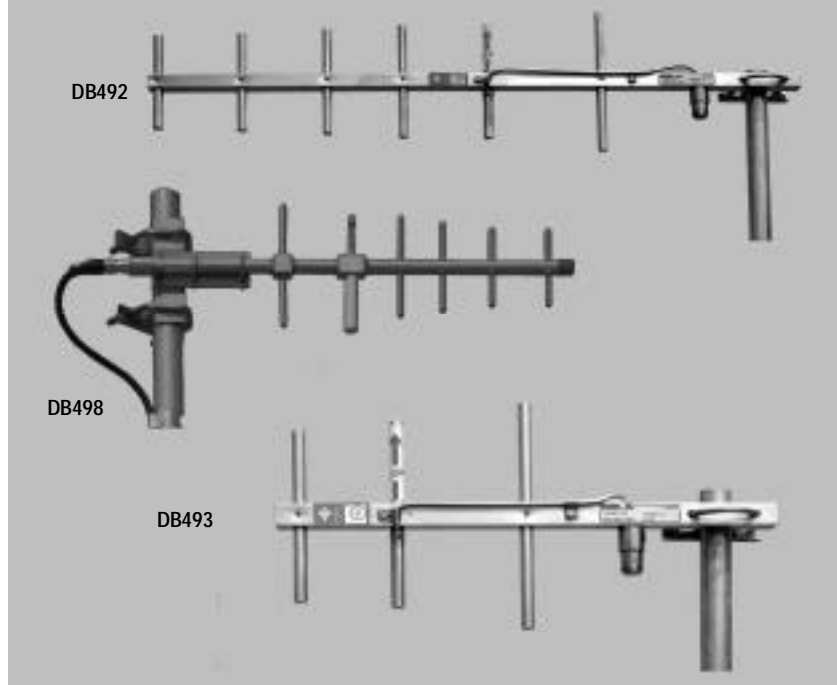


- **Light Duty** – DB492 and DB493 are excellent for control or point-to-point communications, well suited for temporary or portable use.
- **Heavy Duty** – DB498, for permanent installation, is gold anodized and has a radome cover for the radiator to prevent corrosion and ice build-up. It resists winds to 150 mph (241 km/hr).
- **Stacked Array** – Two DB498 antennas increase gain to 12 dBd.
- **All Metal** – Components in the support boom and elements are made of high strength aluminum alloys; brackets and hardware of galvanized or stainless steel.
- **Easy Mount** – A unique mounting arrangement facilitates rapid azimuth orientation.
- **No Field Tuning** – Antennas are assembled and tested for minimum VSWR at the factory; pruning or adjusting is unneeded.
- **Lightning Resistant** – Protection provided by direct ground.

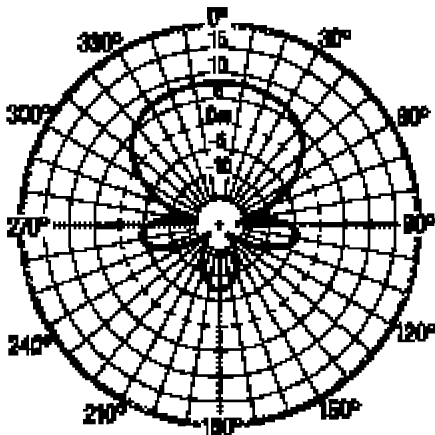
**Ordering Information** – Use model number for correct frequency. Mounting clamps are included. **Example:** DB492-A for 806-866 MHz.



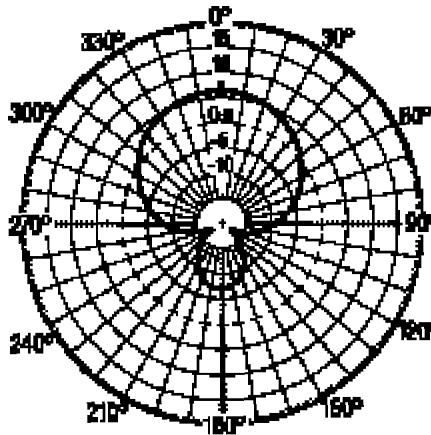
Gain	Order – Light Duty
8 dB	1 ea. DB492 Antenna
6 dBd	1 ea. DB493 Antenna

Gain	Order – Heavy Duty
9 dB	1 ea. DB498 Antenna
12 dBd	2 ea. DB498 Antenna 1 ea. 14498/9-2 Dual Phasing Harness
15 dBd	4 ea. DB498 Antenna 1 ea. 15499-4 Quad Phasing Harness

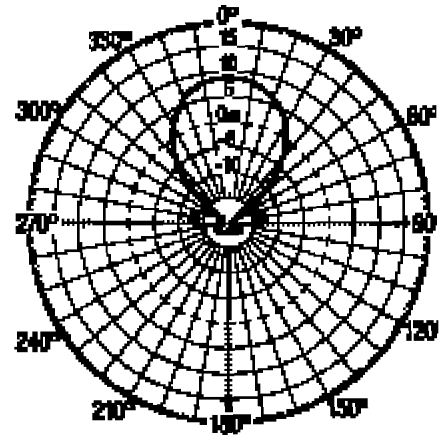
DB492 8 dB Gain, Horizontal F/B 15 dB



DB493 6 dB Gain, Horizontal F/B 14 dB



DB498 9 dB Gain, Horizontal F/B 15 dB



**Electrical Data**

Frequency Ranges – MHz	
DB492, DB493	A = 806-866, K = 920-960
DB498	A = 806-866, C = 824-896, K = 896-960
Bandwidth – MHz	Same as above
VSWR	1.5 to 1 or less
Nominal impedance – ohms	50
Forward gain (over half-wave dipole) – dBd	
DB492	8
DB493	6
DB498	9
Polarization	Vertical
Maximum power input – watts	100
Lightning protection	Direct ground
Standard Termination	Captive Type N-Female

**Mechanical Data**

Support boom	Aluminum
Elements	Aluminum
Dimensions (HxL) – in. (mm)	
DB492	7.5 (190.5)x25.5 (647.7)
DB493	7.5 (190.5)x13 (330.2)
DB498	7.5 (190.5)x25.5 (647.7)
Shipping weight – lbs. (kg)	Net weight – lbs. (kg)
DB492	6 (2.72) 3.5 (1.59)
DB493	3 (1.36) .7 (.32)
DB498	8 (3.63) 5 (2.27)
Mounting brackets	Galvanized steel