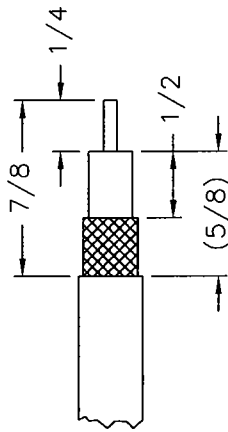
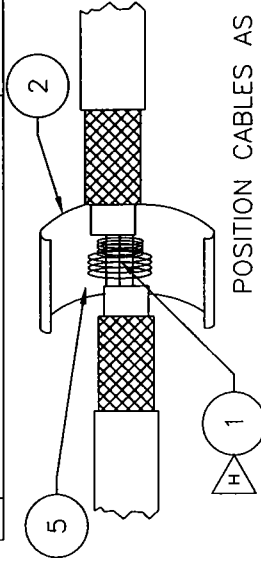


REV.	DESCRIPTION	09/13/1999	08:05:14	APP.
		DATE		

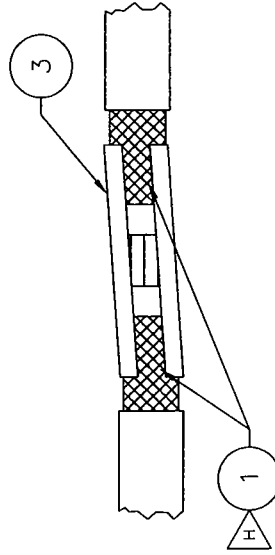


CUT CABLES TO PROPER DIMENSIONS AS SHOWN

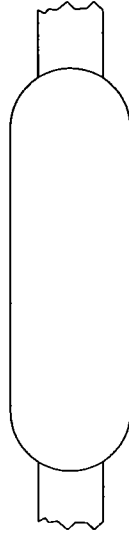


POSITION CABLES AS SHOWN. SOLDER CENTER CONDUCTORS TOGETHER AND WRAP WITH TAPE AS SHOWN. WRAP DIELECTRIC WITH TAPE.

1	2
3	4



POSITION SPLICE CONDUCTORS ON BRAID AS SHOWN. CRIMP TABS TO HOLD IN PLACE AND SOLDER SPLICE CONDUCTORS TO BRAID ON ALL CABLES.



COVER ENTIRE ASSEMBLY WITH POLYETHYLENE RESIN (ALATHON), ITEM 4.

UNLESS OTHERWISE SPECIFIED DIMENSIONS ARE IN INCHES. PER ASME Y14.5M-1994		FINISH:	
DECIMAL:	ANGLE:	MATERIAL:	
xxx = ±.010	±.5°	DRAWN BY: D. MARR	DATE: 04-15-70
xx = ±.02		CHKD.:	DATE:
x = ±.1		ELEC. ENG.: M. WAYNE	DATE: 09-26-03
		MECH. ENG.:	DATE:
		MFG. ENG.:	DATE:
		RELEASED: R. ALCORN	DATE: 08-13-70
		THIS DOCUMENT IS PROPRIETARY INFORMATION OF ANDREW CORPORATION. REPRODUCTION OR DUPLICATION OF THIS DOCUMENT IS STRICTLY PROHIBITED WITHOUT WRITTEN PERMISSION OF ANDREW CORPORATION MANAGEMENT.	
NEXT ASSEMBLY		TITLE: CABLE SPLICING INSTRUCTIONS	
		DRAWING No. 090017-000	
		DO NOT SCALE DRAWING	
		SHEET 1 OF 3	

**ANDREW** Andrew Corporation  
10500 W. 153rd Street  
Orland Park, IL U.S.A. 60462

This Document is Proprietary Information of Andrew Corporation. REPRODUCTION OR DUPLICATION OF THIS DOCUMENT IS STRICTLY PROHIBITED WITHOUT WRITTEN PERMISSION OF ANDREW CORPORATION MANAGEMENT.

**ANDREW**<sup>®</sup>  
 Andrew Corporation  
 10500 W. 153rd Street  
 Orland Park, IL U.S.A. 60462

REV.  
H

090017-000

**BILL OF MATERIALS**

SHEET  
2 OF 3

QUANTITY		ITEM	PART NUMBER	DESCRIPTION	U/M
-010-009-008-007-006-005-004-003-002-001	.001	1	002003-042	SOLDER .063 DIA CRYSTAL 502	LB
	.166	2	002001-027	TAPE TEFLON	FT
	.2	3	018008-001	SPICE CONDUCTOR	EA
	.04	4	011002-015	POLYETHELENE RESIN - ALATHON #33	OZ
	.5	5	011002-016	#26 TINNED PLATED COPPER WIRE	FT
		6			EA
		7			EA
		8			EA
		9			EA
		10			EA
		11			EA
		12			EA
		13			EA
		14			EA
		15			EA
		16			EA
		17			EA
		18			EA
		19			EA
		20			EA
		21			EA
		22			EA
		23			EA
		24			EA
		25			EA
		26			EA
		27			EA
		28			EA
		29			EA
		30			EA
		31			EA
		32			EA
		33			EA
		34			EA
		35			EA
		36			EA
		37			EA
		38			EA
		39			EA
		40			EA

09/13/1999 08:04:43

090017-000