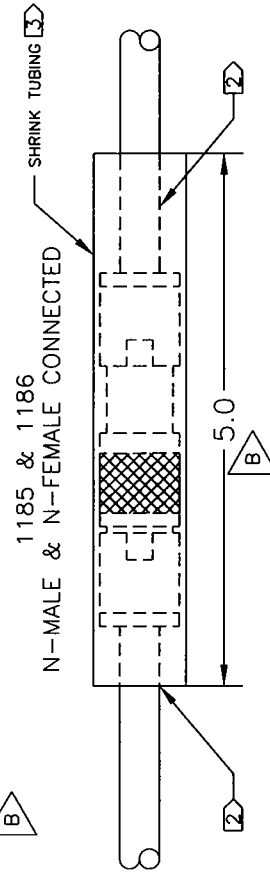
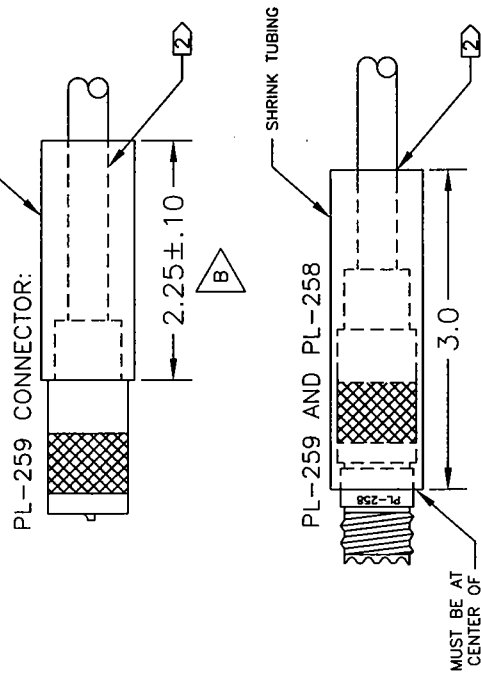
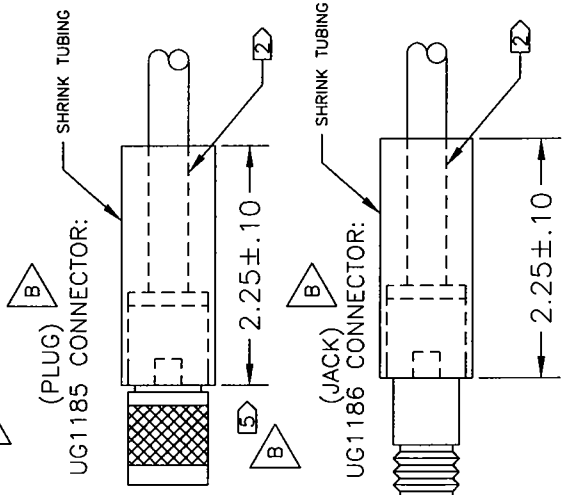


REV.	DESCRIPTION	DATE	APP.
A	ECN B2361U ADD PICTORIALS CHG DIM & NOTES.	09-21-99	DGS MW
B	ECN B8819U CHG DIM AND ADD NOTE 5.	10/20/03	LB MW

REV.	DESCRIPTION	DATE	APP.
A	ECN B2361U ADD PICTORIALS CHG DIM & NOTES.	09-21-99	DGS MW
B	ECN B8819U CHG DIM AND ADD NOTE 5.	10/20/03	LB MW

NOTES:

1. LOCATE SHRINK TUBE OVER INTERFACE AS SHOWN
2. APPLY HEAT TO SHRINK TUBING UNTIL IT CLOSES TIGHTLY AND ADHESIVE FORMS A BEAD AROUND ENDS OF SHRINK TUBING.
3. SHRINK TUBING SHOULD BE CENTERED OVER BOTH CONNECTORS.
4. ALL DIMENSIONS ARE PRIOR TO HEATING TUBE.
5. SHRINK TUBING SHOULD NOT IMPEDE MOTION OF KNURLED CONNECTOR NUT.



UNLESS OTHERWISE SPECIFIED DIMENSIONS ARE IN INCHES. INTERPRET DIM & TOL PER ASME Y14.5M-1994		MATERIAL: N/A		FINISH: NA/	
DECIMAL: .XXX = ±.010	ANGLE: ±.5°	DRAWN BY: GW	DATE: 01-29-92	DRAWING No. 090222-000	
.XX = ±.02		CHKD.: AG	DATE: 01-29-92	REV. B	
.X = ±.1		ELEC. ENG.: MW	DATE: 9-25-03	TITLE: INSTALLATION, SHRINK TUBING	
		MECH. ENG.: N/A	DATE: N/A	SIZE B	
		MFR. ENG.: JB	DATE: 01-29-92	DO NOT SCALE DRAWING	
		RELEASED: AC	DATE: 01-29-92	SHEET 1 OF 1	
REMOVE ALL BURRS AND SHARP EDGES. PART TO BE FREE OF DIRT OR FOREIGN PARTICLES. PART SHALL CONFORM TO BB STANDARD PRACTICES PER ADR COMPANY PROCEDURE 109-1.					
NEXT ASSEMBLY					

ANDREW
 Andrew Corporation
 10500 W. 153rd Street
 Orland Park, IL U.S.A. 60462

This Document is Proprietary Information of Andrew Corporation. THE USE, REPRODUCTION OR DUPLICATION OF THIS DOCUMENT IS STRICTLY PROHIBITED WITHOUT WRITTEN PERMISSION OF ANDREW CORPORATION MANAGEMENT.