

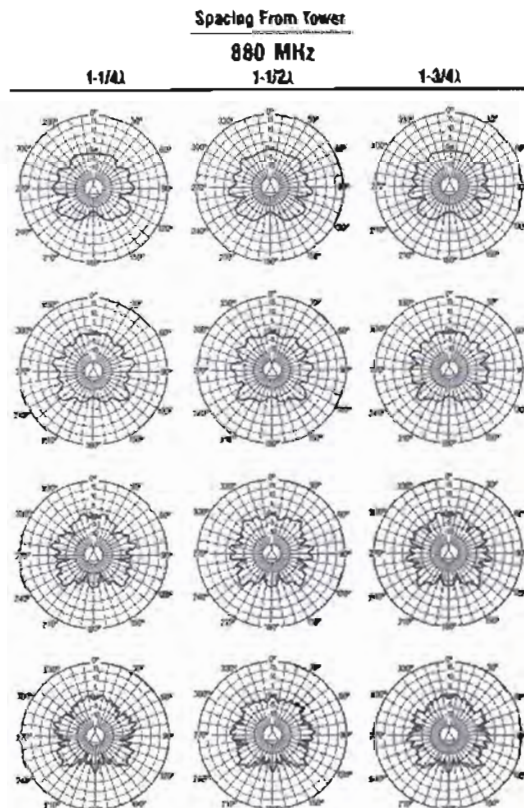
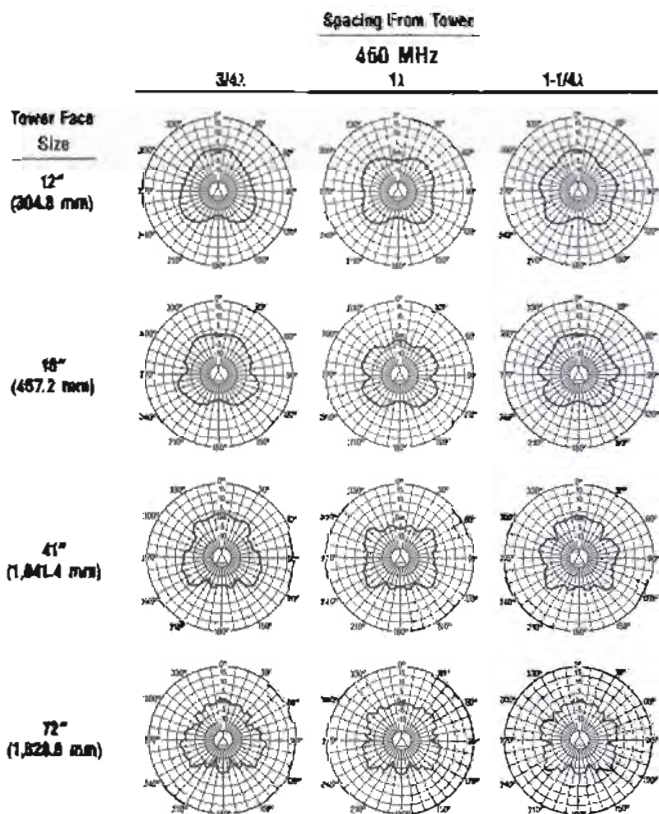
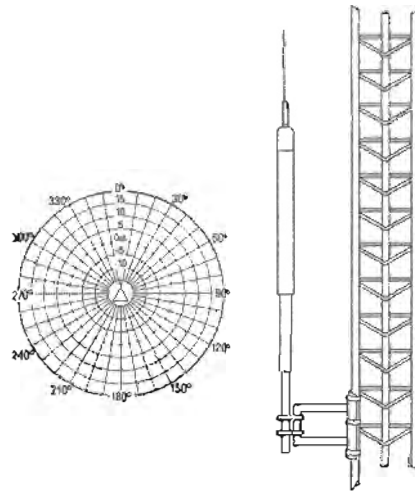
**Omnidirectional Antennas**

**Side-Mounted**

The patterns shown here are horizontal radiation patterns for vertical polarized half-wave dipoles. If gain antennas are used, add the dB gain of the antenna to the pattern gain.

NOTE: These patterns are for estimating pattern shapes only and should not be used for system engineering purposes.

NOTE: λ = antenna wavelength spacing from tower leg.



Reference and Index  
ENGINEERING NOTES