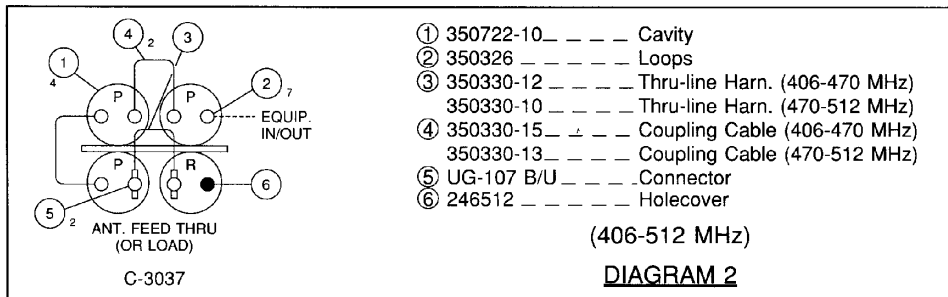
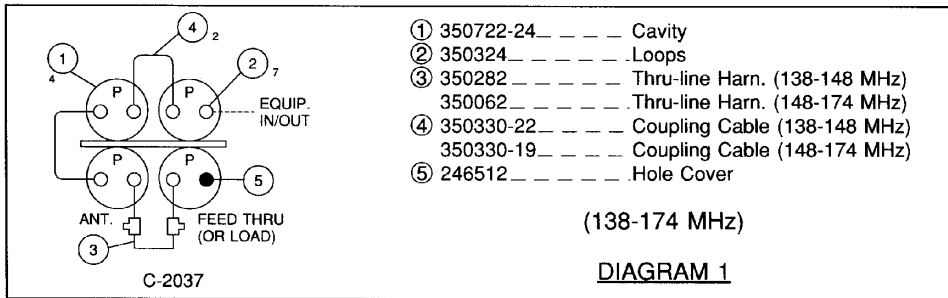
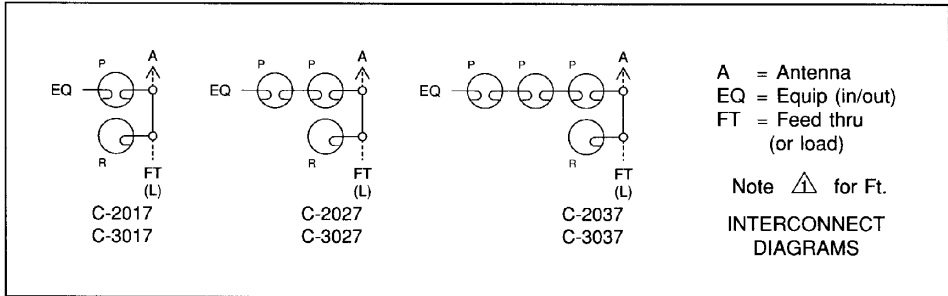


## "C" Series Multicouplers

### Replacement Parts and Instructions



Shown in diagrams 1 & 2 are typical installation and parts lists for the C-2037 and C-3037 "C" Series multicouplers for standard 19 inch rack or cabinet mounting.

The parts lists listed are also applicable to the other "C" Series models. Only the quantities of cavities and cables differ.

$\triangle$  The FT (Feedthru) terminal is connected to the next series of multicouplers or terminated with 50 OHM loads.

Loads available are: AL-030-0\_ \_ \_ \_ \_ 50 OHM, 30 Watts  
 BL-060-0\_ \_ \_ \_ \_ 50 OHM, 60 Watts

Consult Sinclair Sales for prices and delivery of replacement parts.