

# EXTENDER CARD INSTRUCTION SHEET

SR-39-1, SR-39-3 and SR-39-4 Subracks

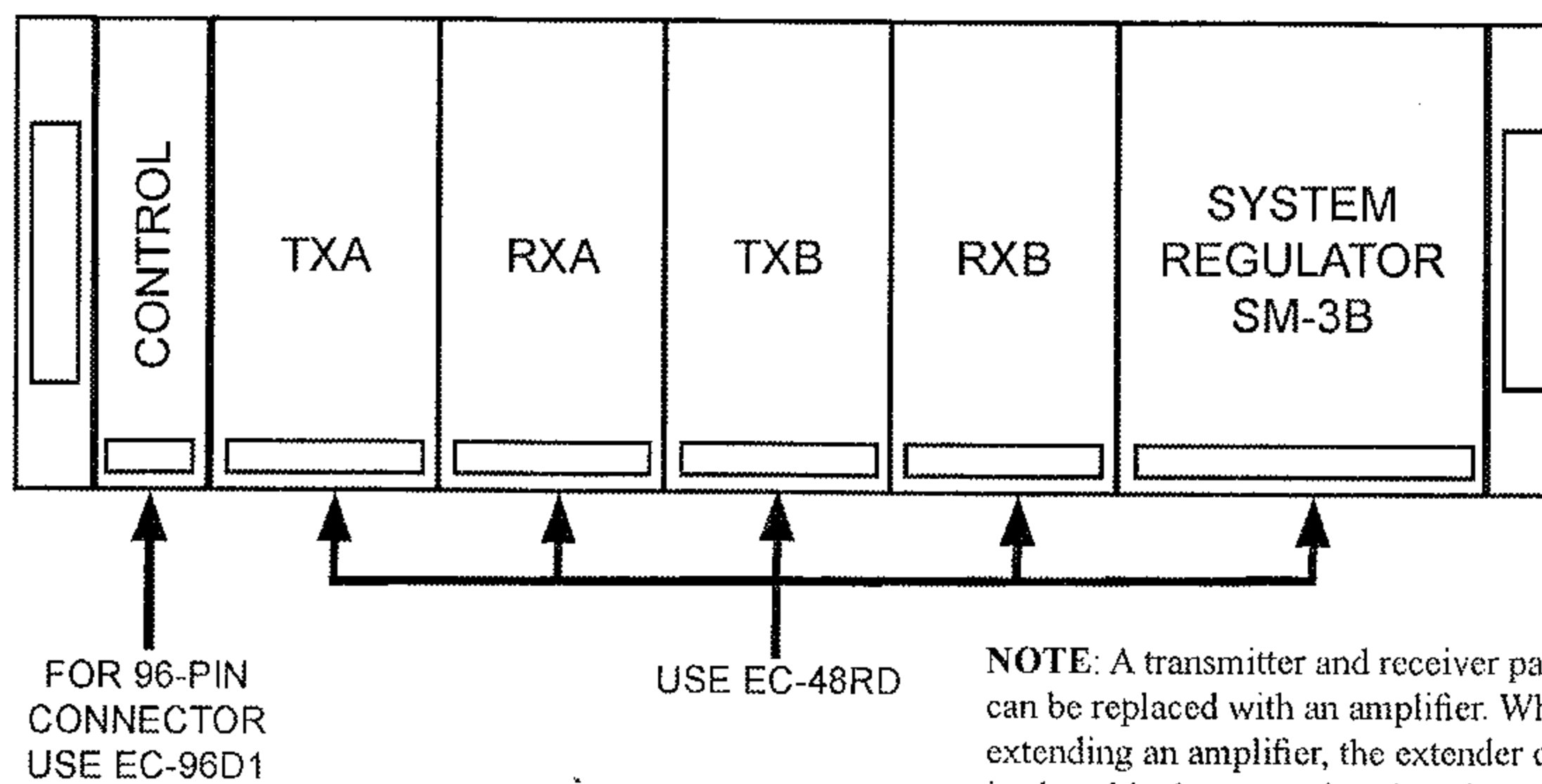


FIGURE 1: Extender Card Selection Diagram

- EC-48RD Extender Card, Radio / System Regulator Modules, 48-Pin Direct Connect Type. Includes Adapter Panel Extrusion.
- EC-96D1 Extender Card, Audio Module, 96-Pin Direct Connector Type
- EC-48RK-1.22 Extender Kit, Radio / System Regulator Modules. Includes EC-48R + 4 ft. 48-Pin Cable + Adapter Panel Extrusion.
- EC-96K-1.22 Extender Kit, 96-Pin Module. Includes EC-96 + 4 ft. 96-Pin Cable.

## EC-48RD

1. Remove the module to be tested (see Figure 1).
2. Install the adapter panel extrusion into the same location where the module to be tested was previously installed.
3. Install the extender card adapter panel and extender card, for:

Transmitter Modules:

- a. Install the extender card into Position A (see Figure 2).
- b. Pull the adapter panel extrusion out to the position indicated on the top of the direct connect adapter panel.
- c. Install the MT-3 series transmitter module into Position A (see Figure 2).

Receiver Modules and System Regulator:

- a. Install the extender card into Position B (see Figure 2).

## EC-96D1

1. Remove the module to be tested.
2. Install the extender card into the same location where the module to be tested was previously installed.
3. Install the module to be tested into the red plastic rail on the extender card. The black locking levers are opened up until the connector touches the locking levers (see Figure 3).
4. Close the black locking levers onto the red plastic rails, this will pull the module up to the extender card (see Figure 3).

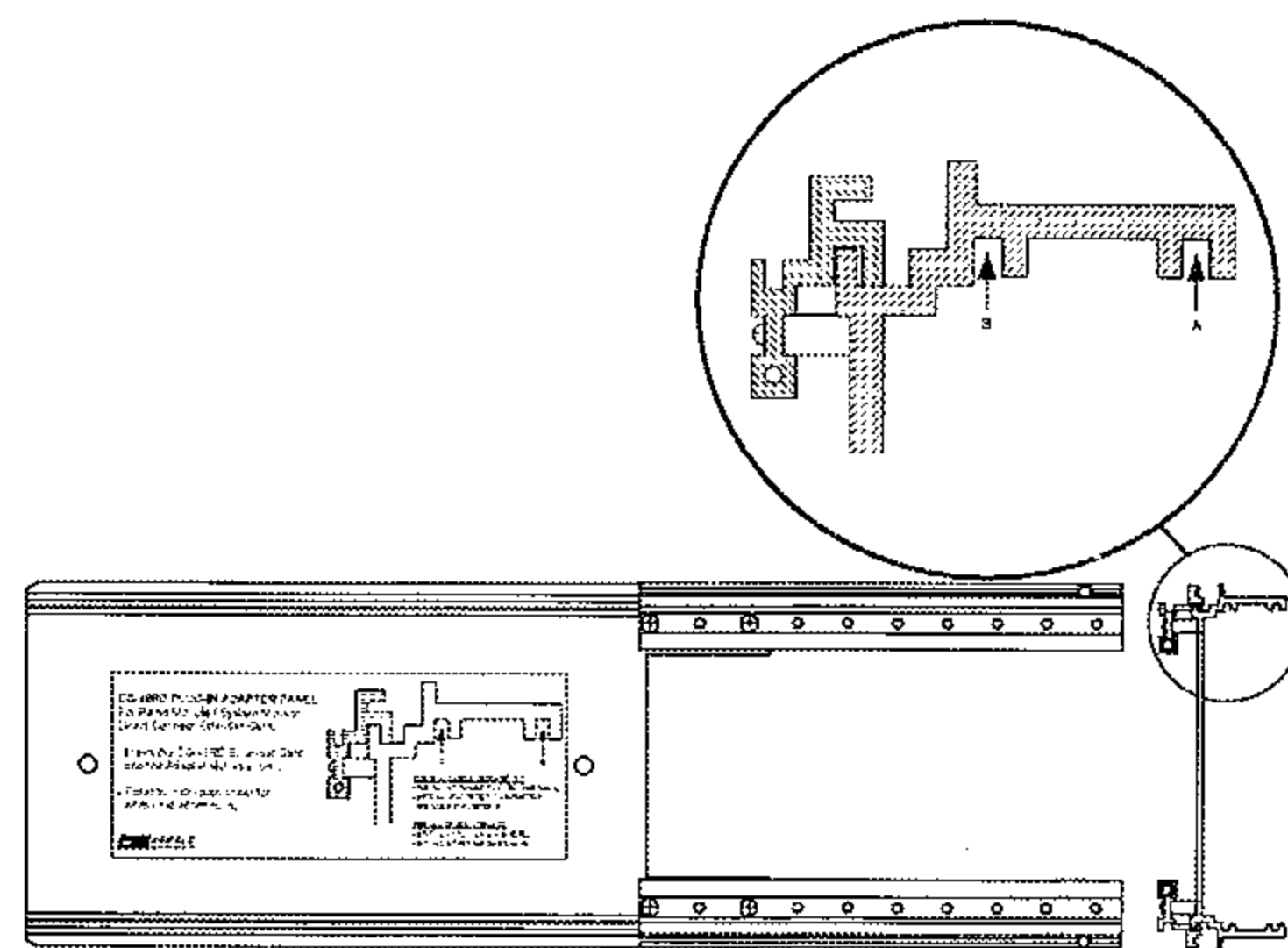


FIGURE 2

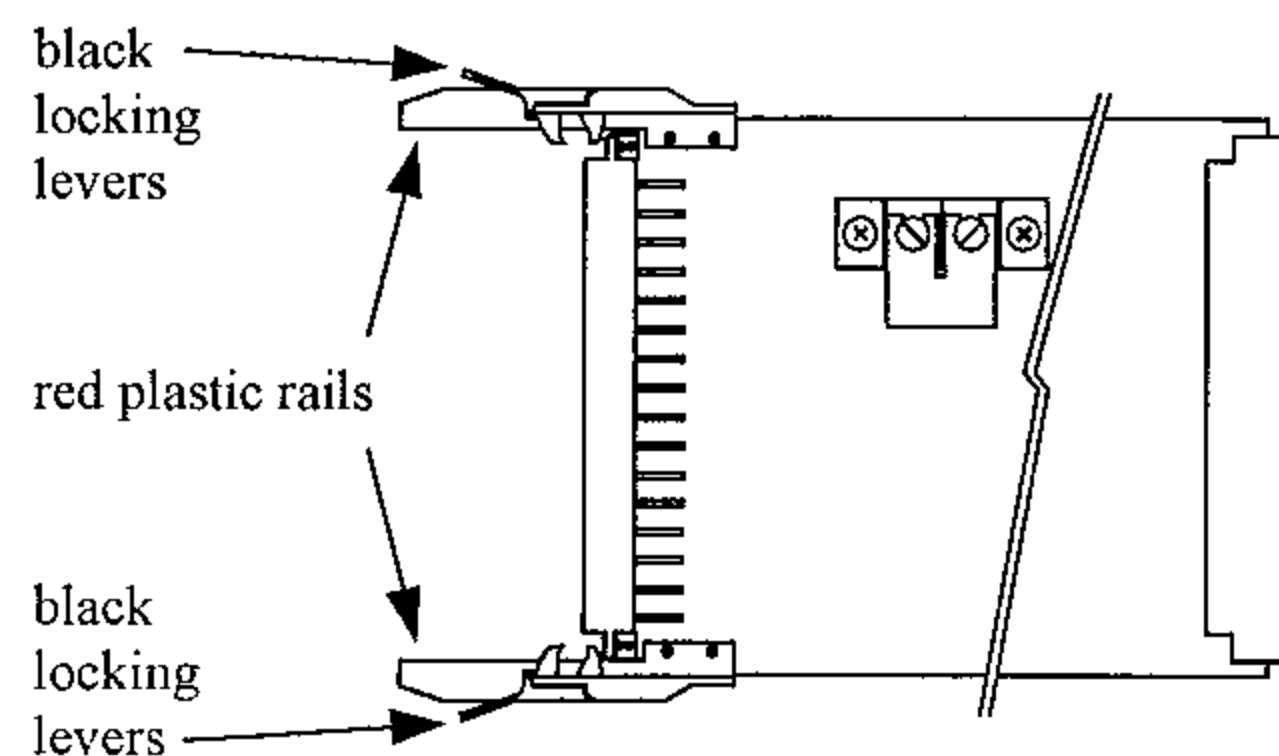


FIGURE 3