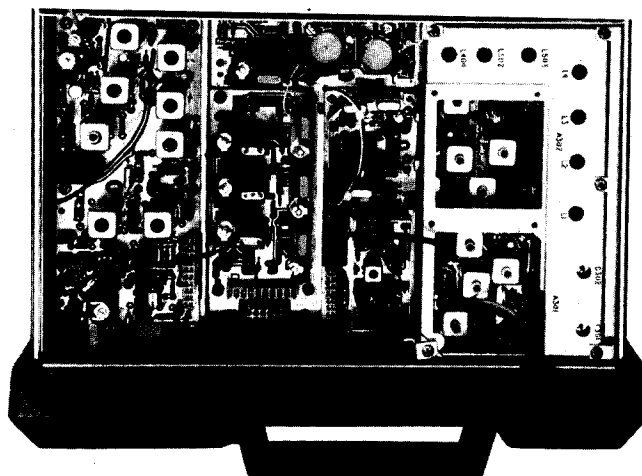


# **MASTR<sup>®</sup> Executive II** **MAINTENANCE MANUAL**

**30-50 MHz RECEIVER (WITH NOISE BLANKER)**

(Non-Noise Blanker version is LBI-30047)



## **TABLE OF CONTENTS**

SPECIFICATIONS .....	ii
DESCRIPTION AND MAINTENANCE .....	LBI30137 (DF1112)
RF ASSEMBLY & MIXER IF ASSEMBLY/NB BOARD .....	LBI4991 (DF1107)
OSCILLATOR/MULTIPLIER .....	LBI30048 (DF1106)
IF-DETECTOR .....	LBI30049 (DF1105)

**SPECIFICATIONS\***

Audio Output (to 3.2 ohm speaker)	5 Watts at less than 5% distortion	
Sensitivity		
12-dB SINAD (EIA Method)	0.25 $\mu$ V	
20-dB Quieting Method	0.35 $\mu$ V	
Selectivity		
EIA Two-Signal Method	-95 @ $\pm$ 20 kHz	
Spurious Response	-100 dB	
Intermodulation (EIA)	-80 dB	
Frequency Stability	$\pm$ 0.0005%	
Modulation Acceptance	$\pm$ 6.5 kHz	
Squelch Sensitivity (Fixed)	4dB SINAD	
Maximum Frequency Separation	<u>Full Specifications</u>	<u>3 dB Degradation</u>
30-36 MHz	0.120 MHz	0.340 MHz
36-42 MHz	0.160 MHz	0.400 MHz
42-50 MHz	0.360 MHz	0.640 MHz
Frequency Response	Within +1 and -8 dB of a standard 6-dB per octave de-emphasis curve from 300 to 3000 Hz (1000 Hz reference)	
RF Input Impedance	50 ohms	

\* These specifications are intended primarily for use of the serviceman. Refer to the appropriate Specification Sheet for the complete specifications.

**WARNING**

Although the highest DC voltage in MASTR® Executive II Mobile Equipment is +12 VDC, high currents may be drawn under short circuit conditions. These currents can possibly heat metal objects such as tools, rings, watchbands, etc., enough to cause burns. Be careful when working near energized circuits!

High-level RF energy in the transmitter Power Amplifier assembly can cause RF burns upon contact. Keep away from these circuits when the transmitter is energized!