

DF-3110

PRODUCTION CHANGE SHEET
FOR
TRANSMITTER MODEL 4ET48A10, 12; REV. C
TRANSMITTER MODEL 4ET48A11, 13; REV. B

Changes listed below are identified by the letter appearing in the REV. pad on the unit nameplate.

REV. A (Models 4ET48A10 & 12 only)

To improve modulation operation at low audio frequencies.

| <u>Part Changed</u> | <u>Was</u> | <u>Changed To</u> |
|-------------------------|-------------------------|---|
| C114 | Added in place of C112. | Capacitor, Mylar®, dielectric: 2 mf $\pm 20\%$, 100 VDCW; Sim to G-E 61F. |
| C106 | Added in place of C104. | Capacitor, variable, ceramic trimmer: 4.5 to 25 pf, 500 VDCW, temp coef 0. |
| L108 | Added in place of L107. | Choke, RF: 39 μ h $\pm 10\%$, 0.5 amps, 2 ohms; Sim to Jeffers 10203-40. |

Elementary Diagram Changes

Changed connection of C110 to go from XV102-1 to XV101-5 instead of from XV102-1 to TB1-3.

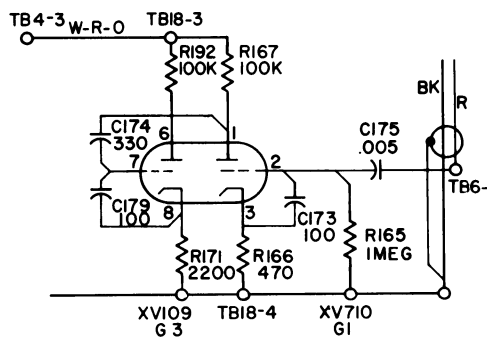
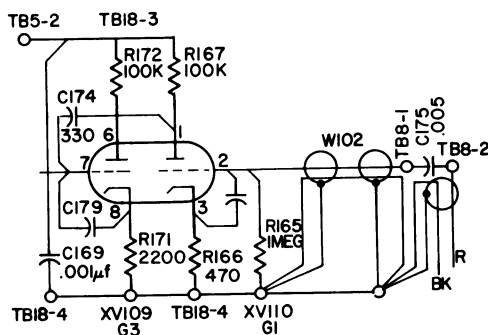
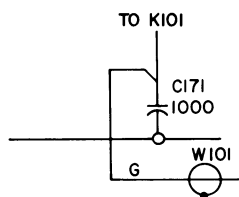
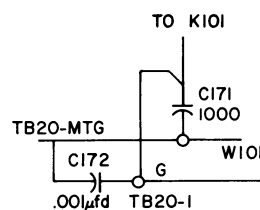
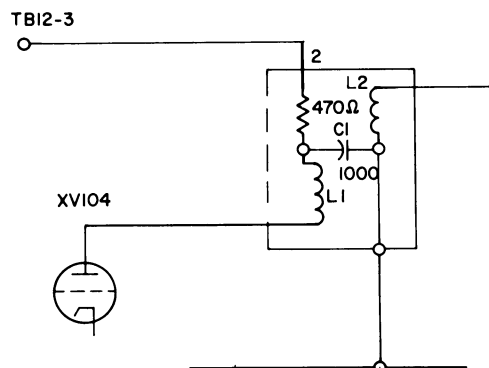
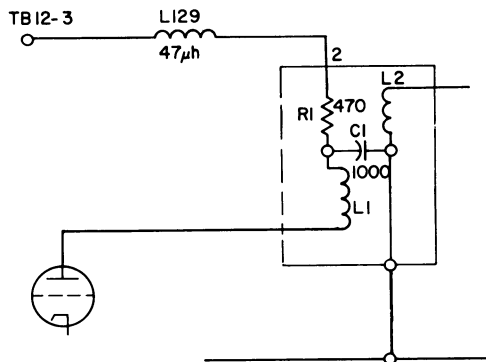
REV. A (Models 4ET48A11, 13 only)
REV. B (Models 4ET48A10, 12 only)

To reduce FM noise.

| <u>Part Changed</u> | <u>Was</u> | <u>Changed To</u> |
|-------------------------|------------|--|
| C169 | Added. | Capacitor, ceramic disc: 1000 pf $\pm 20\%$, 500 VDCW; sim to RCM JF. G-E Part No. 5494481-P11. |
| C172 | Added. | Capacitor, ceramic disc: 1000 pf $\pm 20\%$, 500 VDCW; sim to RCM JF. G-E Part No. 5494481-P11. |

REV. A & REV. B (Cont'd)

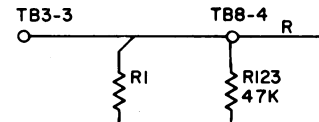
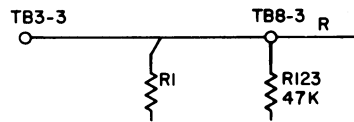
| <u>Part</u> <u>Changed</u> | <u>Was</u> | <u>Changed To</u> |
|-------------------------------|------------|---|
| L129 | Added. | Choke, RF: $4.7 \mu\text{h} \pm 20\%$, 0.53 amps, 1.8 ohms. G-E Part No. 7488079-P39. |
| W102 | Added. | Cable, 2 conductor: #22 AWG solid, shielded, jack- eted, 2.5" long. G-E Part No. 7163877-P1. |

Elementary Diagram ChangesWasChanged ToWasChanged ToWasChanged To

REV. A & REV. B (Cont'd)

Was

Changed To



The following changes in wiring have been incorporated. The blue wire of the W101 cable has been rerouted to run along TB8 and TB18, pass between TB6 and TB18 and run directly to TB14-4. The green wire from the W101 cable has been rerouted so it runs around Z301 by Z105 and XV104 to TB20. A green wire has been added from TB20 to C171. The DB buss between XV107 and TB13 has been removed from TB13 and soldered to the tube socket.

Outline Diagram Changes

TB8 changed from 3 terminals to 4 terminals.

TB20 added (mounts with Z107).

REV. B (Models 4ET48A11, 13 only)
REV. C (Models 4ET48A10, 12 only)

To improve low frequency response.

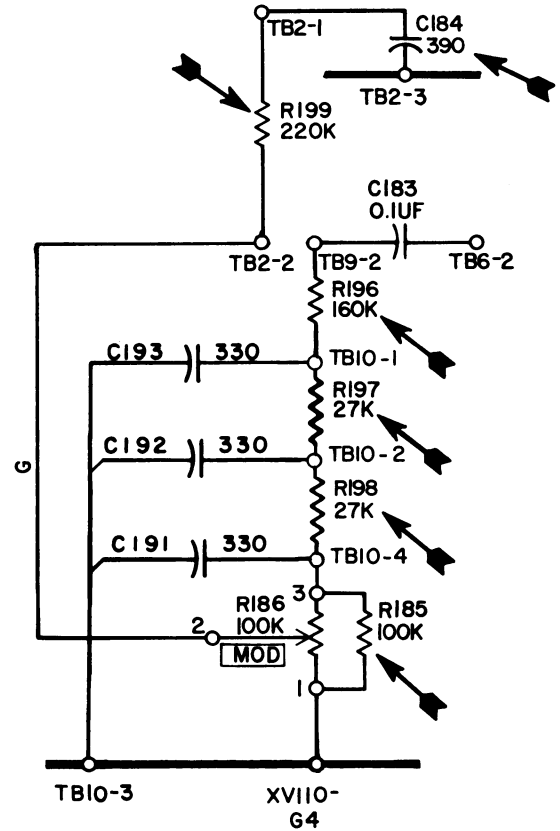
| <u>Part</u> <u>Changed</u> | <u>Was</u> | <u>Changed To</u> |
|-------------------------------|--|--|
| C174 | Capacitor, fixed mica: 330 pf $\pm 10\%$, 500 VDCW. Type RCM JF. G-E Part No. 3R141-P50. | Capacitor, fixed ceramic disc: 10,000 pf $\pm 20\%$, 500 VDCW. G-E Part No. 5494481-P22. |
| C175 | Capacitor, fixed ceramic disc: .005 μf +100% -0%, 500 VDCW. G-E Part No. 7774750-P11. | Capacitor, fixed ceramic disc: .0033 μf +100% -0%, 500 VDCW. G-E Part No. 7774750-P8. |
| C176 | Added. | Capacitor, Mylar® dielectric: .033 μf $\pm 10\%$, 200 VDCW. G-E Part No. 19A115028-P210. |
| C177 | Added. | Capacitor, fixed ceramic disc: 0.1 μf +80% -25%, 500 VDCW; sim to Sprague 36C190A. G-E Part No. 7488160-P3. |

REV. B and REV. C (Cont'd)

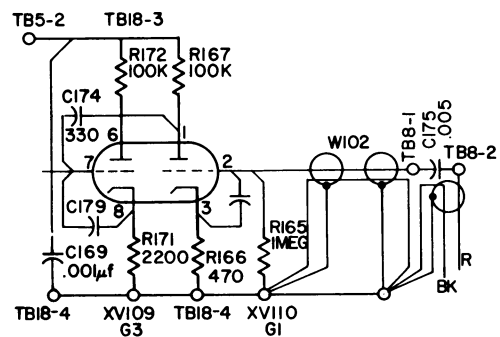
| <u>Part Changed</u> | <u>Was</u> | <u>Changed To</u> |
|-------------------------|---|---|
| C178 | Capacitor, fixed paper: .01 μ f $\pm 20\%$, 400 VDCW. G-E Part No. 7491096-P33 | Capacitor, fixed paper: .01 μ f $\pm 20\%$, 500 VDCW. G-E Part No. 7491096-P3. |
| C184 | Capacitor, stabilized high K ceramic disc: 4700 pf $\pm 10\%$, 500 VDCW. G-E Part 3R81-P472K. | Capacitor, fixed mica: 390 pf $\pm 10\%$, 500 VDCW. G-E Part No. 7489162-P141. |
| R165 | Resistor, composition: 1.0 megohm $\pm 10\%$, 1/2 watt. G-E Part No. 3R77-P472K. | Resistor, composition: .47 megohm $\pm 10\%$, 1/2 watt. G-E Part No. 3R77-P474K. |
| R166 | Resistor, composition: 470 ohms $\pm 10\%$, 1/2 watt. G-E Part No. 3R77-P471K. | Resistor, composition: 33,000 ohms $\pm 10\%$, 1/2 watt. G-E Part No. 3R77-P332K. |
| R185 | Added. | Resistor, composition: .10 megohm $\pm 10\%$, 1/2 watt. G-E Part No. 3R77-P104K. |
| R196 | Resistor, composition: 15,000 ohms $\pm 5\%$, 1/2 watt. G-E Part No. 3R77-P184K. | Resistor, composition: .16 megohm $\pm 10\%$, 1/2 watt. G-E Part No. 3R77-P164J. |
| R197 | Resistor, composition: 15,000 ohms $\pm 10\%$, 1/2 watt. G-E Part No. 3R77-P153K. | Resistor, composition: 27,000 ohms $\pm 10\%$, 1/2 watt. G-E Part No. 3R77-P273K. |
| R198 | Resistor, composition: 15,000 ohms $\pm 10\%$, 1/2 watt. G-E Part No. 3R77-P153K. | Resistor, composition: 27,000 ohms $\pm 10\%$, 1/2 watt. G-E Part No. 3R77-P273K. |
| R199 | Resistor, composition: 15,000 ohms $\pm 10\%$, 1/2 watt. G-E Part No. 3R77-P153K. | Resistor, composition: 22,000 ohms $\pm 10\%$, 1/2 watt. G-E Part No. 3R77-P224K. |

Elementary Diagram Changes

Changed To



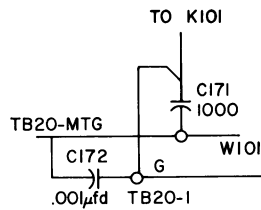
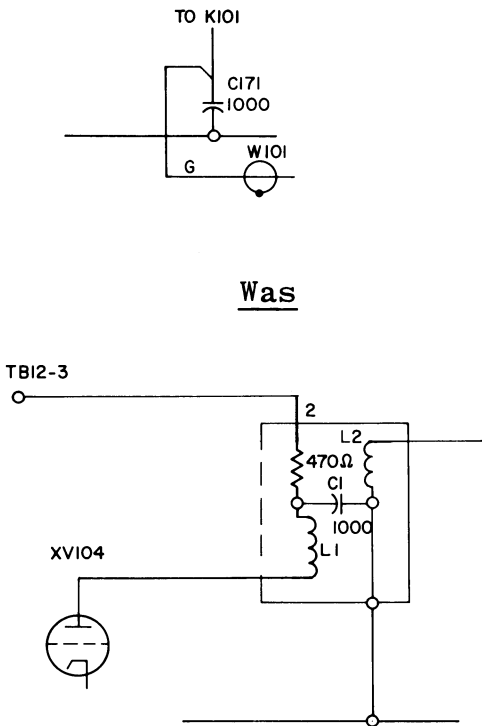
Changed To



REV. B and REV. C (Cont'd)

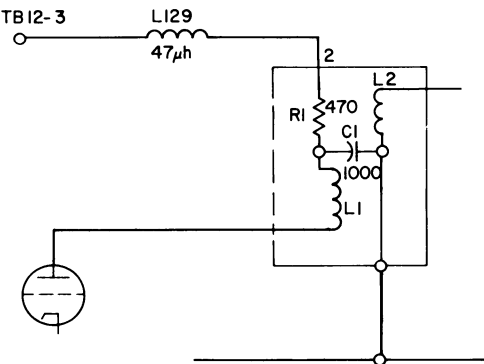
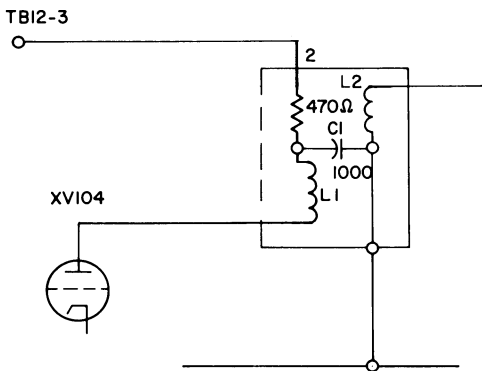
Was

Changed To



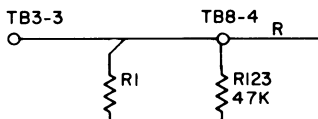
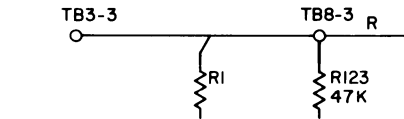
Was

Changed To



Was

Changed To



COMMUNICATION PRODUCTS DEPARTMENT
GENERAL ELECTRIC COMPANY
LYNCHBURG, VIRGINIA