



LBI-38496B

**MAINTENANCE MANUAL
ALARM SHELF
19D902821P1**

TABLE OF CONTENTS

| | <u>Page</u> |
|-----------------------------------|-------------|
| SPECIFICATIONS | Front Cover |
| DESCRIPTION | 1 |
| TRANSMIT SITE | 1 |
| CONTROL POINT | 1 |
| WIRING LIST | 1 |
| FUNCTION LIST | 10 |
| OUTLINE DIAGRAM | 12 |
| ASSEMBLY DIAGRAM: | |
| ALARM SHELF 19D902821P1 | 13 |
| ALARM SHELF 19D902821P2 | 14 |
| CABLE 19C337513G1 | 15 |
| PARTS LIST | Back Cover |

SPECIFICATIONS

| | |
|------------------------|---------------------------|
| DIMENSIONS (H X W X D) | 6.970" X 19.00" X 11.938" |
| INPUT VOLTAGE | + 5Vdc, +12Vdc, -12Vdc |
| NUMBER OF SLOTS | 21 |

PARTS LIST

**CROSS CONNECT BACKPLANE
19D902792G2**

CROSS CONNECT BACKPLANE
19D902792G2
ISSUE 1

| SYMBOL | GE PART NO. | DESCRIPTION |
|--------------------|--------------|---|
| | | ----- FUSES ----- |
| F1 | 19A701881P18 | Fuse: .5A, 250 V. |
| | | ----- CONNECTORS ----- |
| J1 thru J7 | | 50 pin; sim to Amp 1-499582-0. |
| J8 | | 9 pin; sim to Amp 747090-2. |
| J9 thru J11 | | 50 pin; sim to Amp 1-499582-0. |
| J12 and J13 | | NOT USED. |
| J14 and J15 | | 60 pin; sim to Amp 1-499582-1. |
| J16 thru J19 | | 26 pin; sim to Amp 499582-6. |
| J20 | | 60 pin; sim to Amp 1-499582-1. |
| J21 and J22 | | 10 pin; sim to Amp 499582-1. |
| J23 thru J42 | | Modular telephone connector; sim to Steward SS-6546-WF. |
| J43 | | 10 pin; sim to Amp 499582-1. |
| J44 | | 56 pin printed wire board edge connector; sim to EDAC 737-056-525-206. |
| J45 | 19A116659P57 | 4 pin. |
| | | ----- RESISTORS ----- |
| R1 | 19A700113P53 | 390 ohms, 1/2 w. |
| | | ----- SWITCHES ----- |
| S1 | 19B800010P2 | 8 position, DIP. |
| | | ----- MISCELLANEOUS ----- |
| | | Fuse clip; sim to Bussman 1A1119-05. |
| | | Latch; sim to Amp 102320-1. |

*COMPONENTS ADDED, DELETED OR CHANGED BY PRODUCTION CHANGES



Ericsson GE Mobile Communications Inc.
Mountain View Road • Lynchburg, Virginia 24502

DESCRIPTION

Ericsson GE's Alarm Shelf (19D902821) is a four rack unit shelf used in the Simulcast Alarm System, alarm station. Alarm Shelf 19D902821P1 is used at the Transmit Site (Collocated or Remote) and Alarm Shelf 19D902821P2 is used at the Control Point (Master and Slave). Both Alarm Shelves (Parts 1 and 2) provide a standard bus backplane (MB12 (WinSystem)) mounted to a standard bus card cage (CCK15F (Vector)) and slots for plug-in modules. Cross Connect Backplane 19D902792G2 is also provided as part of the Alarm Shelf (refer to the Assembly Diagram and Outline Diagram listed in the Table of Contents).

TRANSMIT SITE

Alarm Shelf 19D902821P1 is used at the Transmit Site and provides a standard bus backplane (MB12) and slots for modules as follows:

Collocated

- 1 - Digital Input Card (339C-1 (Endlode))
- 1 - Central Processing Unit (CPU) card (LPM-S/BC5-6 (WinSystem))
- 4 - Analog/Digital (A/D) Cards (LPM-A/D-1 2M (WinSystem))
- 1 - Digital Output Card (338C-1 (Endlode))

Remote

- 1 - Digital Input Card (339C-1 (Endlode))
- 1 - Central Processing Unit (CPU) card (LPM-S/BC5-6 (WinSystem))
- 4 - Analog/Digital (A/D) Cards (LPM-A/D-12M (WinSystem))
- 1 - Modem Card (ST8843 (Zistech))
- 1 - Digital Output Card (338C-1 (Endlode))
- 1 - Hybrid Card (4201 (Tellabs))

CONTROL POINT

Alarm Shelf 19D902821P2 is used at the Control Point and provides a standard bus backplane (MB12) and slots for modules as follows:

1 to 10 Sites

- 1 - Digital Input Card (339C-1 (Endlode))
- 1 - Central Processing Unit (CPU) card (LPM-S/BC5-6 (WinSystem))
- 4 - Analog/Digital (A/D) Cards (LPM-A/D-1 2M (WinSystem))
- 1 to 10 - Modem Card (ST8843 (Zistech))
- 2 - Digital Output Card (338C-1 (Endlode))

1 to 20 Sites

With 1 to 20 sites, a master and a slave Alarm Shelf is used.

Master:

- 1 - Central Processing Unit (CPU) card (LPM-S/BC5-6 (WinSystem))
- 1 to 20 - Modem Card (ST8843 (Zistech))

Slave:

- 1 - Digital Output Card (338C-1 (Endlode))
- 1 - Central Processing Unit (CPU) card (LPM-S/BC5-6 (WinSystem))
- 4 - Analog/Digital (A/D) Cards (LPM-A/D-12M (WinSystem))
- 2 - Digital Output Card (338C-1 (Endlode))

**WIRING LIST
ALARM HYBRID SHELF**

| FROM | TO | FUNCTION | PUNCH BLOCK |
|----------|----------|------------|-------------|
| GND - 01 | J05 - 17 | GND01 | |
| | J05 - 27 | | |
| GND - 02 | J06 - 17 | GND02 | |
| | J06 - 27 | | |
| GND - 03 | J07 - 17 | GND03 | |
| | J07 - 27 | | |
| GND - 04 | J08 - 17 | GND04 | |
| | J08 - 27 | | |
| GND - 05 | J09 - 17 | GND05 | |
| | J09 - 27 | | |
| GND - 06 | J10 - 17 | GND06 | |
| | J10 - 27 | | |
| GND - 07 | J11 - 17 | GND07 | |
| | J11 - 27 | | |
| GND - 08 | J12 - 17 | GND08 | |
| | J12 - 27 | | |
| GND - 09 | J13 - 17 | GND09 | |
| | J13 - 27 | | |
| GND - 10 | J14 - 17 | GND10 | |
| | J14 - 27 | | |
| GND - 11 | J15 - 17 | GND11 | |
| | J15 - 27 | | |
| GND - 12 | J16 - 17 | GND12 | |
| | J16 - 27 | | |
| J01 - 01 | J05 - 41 | M TIP S01 | |
| J01 - 02 | J06 - 41 | M TIP S02 | |
| J01 - 03 | J07 - 41 | M TIP S03 | |
| J01 - 04 | J08 - 41 | M TIP S04 | |
| J01 - 05 | J09 - 41 | M TIP S05 | |
| J01 - 06 | J10 - 41 | M TIP S06 | |
| J01 - 07 | J11 - 41 | M TIP S07 | |
| J01 - 08 | J12 - 41 | M TIP S08 | |
| J01 - 09 | J13 - 41 | M TIP S09 | |
| J01 - 10 | J14 - 41 | M TIP S10 | |
| J01 - 11 | J15 - 41 | M TIP S11 | |
| J01 - 12 | J16 - 41 | M TIP S12 | |
| J01 - 13 | | n/c | |
| J01 - 14 | | n/c | |
| J01 - 15 | | n/c | |
| J01 - 16 | | n/c | |
| J01 - 17 | | n/c | |
| J01 - 18 | | n/c | |
| J01 - 19 | | n/c | |
| J01 - 20 | | n/c | |
| J01 - 21 | | n/c | |
| J01 - 22 | | n/c | |
| J01 - 23 | | n/c | |
| J01 - 24 | | n/c | |
| J01 - 25 | | n/c | |
| J01 - 26 | J05 - 47 | M RING S01 | |

Continued

Continued

| FROM | TO | FUNCTION | PUNCH BLOCK |
|----------|----------|------------|-------------|
| J01 - 27 | J06 - 47 | M RING S02 | |
| J01 - 28 | J07 - 47 | M RING S03 | |
| J01 - 29 | J08 - 47 | M RING S04 | |
| J01 - 30 | J09 - 47 | M RING S05 | |
| J01 - 31 | J10 - 47 | M RING S06 | |
| J01 - 32 | J11 - 47 | M RING S07 | |
| J01 - 33 | J12 - 47 | M RING S08 | |
| J01 - 34 | J13 - 47 | M RING S09 | |
| J01 - 35 | J14 - 47 | M RING S10 | |
| J01 - 36 | J15 - 47 | M RING S11 | |
| J01 - 37 | J16 - 47 | M RING S12 | |
| J01 - 38 | | n/c | |
| J01 - 39 | | n/c | |
| J01 - 40 | | n/c | |
| J01 - 41 | | n/c | |
| J01 - 42 | | n/c | |
| J01 - 43 | | n/c | |
| J01 - 44 | | n/c | |
| J01 - 45 | | n/c | |
| J01 - 46 | | n/c | |
| J01 - 47 | | n/c | |
| J01 - 48 | | n/c | |
| J01 - 49 | | n/c | |
| J01 - 50 | | n/c | |
| J03 - 01 | J05 - 55 | XMT T S01 | |
| J03 - 02 | J05 - 05 | RCV T S01 | |
| J03 - 03 | J06 - 55 | XMT T S02 | |
| J03 - 04 | J06 - 05 | RCV T S02 | |
| J03 - 05 | J07 - 55 | XMT T S03 | |
| J03 - 06 | J07 - 05 | RCV T S03 | |
| J03 - 07 | J08 - 55 | XMT T S04 | |
| J03 - 08 | J08 - 05 | RCV T S04 | |
| J03 - 09 | J09 - 55 | XMT T S05 | |
| J03 - 10 | J09 - 05 | RCV T S05 | |
| J03 - 11 | J10 - 55 | XMT T S06 | |
| J03 - 12 | J10 - 05 | RCV T S06 | |
| J03 - 13 | J11 - 55 | XMT T S07 | |
| J03 - 14 | J11 - 05 | RCV T S07 | |
| J03 - 15 | J12 - 55 | XMT T S08 | |
| J03 - 16 | J12 - 05 | RCV T S08 | |
| J03 - 17 | J13 - 55 | XMT T S09 | |
| J03 - 18 | J13 - 05 | RCV T S09 | |
| J03 - 19 | J14 - 55 | XMT T S10 | |
| J03 - 20 | J14 - 05 | RCV T S10 | |
| J03 - 21 | J15 - 55 | XMT T S11 | |
| J03 - 22 | J15 - 05 | RCV T S11 | |
| J03 - 23 | J16 - 55 | XMT T S12 | |
| J03 - 24 | J16 - 05 | RCV T S12 | |
| J03 - 25 | | n/c | |
| J03 - 26 | J05 - 49 | XMT R S01 | |
| J03 - 27 | J05 - 15 | RCV R S01 | |

Continued

Continued

| FROM | TO | FUNCTION | PUNCH BLOCK |
|----------|----------------------|-----------|-------------|
| J03 - 28 | J06 - 49 | XMT R S02 | |
| J03 - 29 | J06 - 15 | RCV R S02 | |
| J03 - 30 | J07 - 49 | XMT R S03 | |
| J03 - 31 | J07 - 15 | RCV R S03 | |
| J03 - 32 | J08 - 49 | XMT R S04 | |
| J03 - 33 | J08 - 15 | RCV R S04 | |
| J03 - 34 | J09 - 49 | XMT R S05 | |
| J03 - 35 | J09 - 15 | RCV R S05 | |
| J03 - 36 | J10 - 49 | XMT R S06 | |
| J03 - 37 | J10 - 15 | RCV R S06 | |
| J03 - 38 | J11 - 49 | XMT R S07 | |
| J03 - 39 | J11 - 15 | RCV R S07 | |
| J03 - 40 | J12 - 49 | XMT R S08 | |
| J03 - 41 | J12 - 15 | RCV R S08 | |
| J03 - 42 | J13 - 49 | XMT R S09 | |
| J03 - 43 | J13 - 15 | RCV R S09 | |
| J03 - 44 | J14 - 49 | XMT R S10 | |
| J03 - 45 | J14 - 15 | RCV R S10 | |
| J03 - 46 | J15 - 49 | XMT R S11 | |
| J03 - 47 | J15 - 15 | RCV R S11 | |
| J03 - 48 | J16 - 49 | XMT R S12 | |
| J03 - 49 | J16 - 15 | RCV R S12 | |
| J03 - 50 | | n/c | |
| J05 - 01 | | n/c | |
| J05 - 02 | | n/c | |
| J05 - 03 | | n/c | |
| J05 - 04 | | n/c | |
| J05 - 05 | J03 - 02 | RCV T S01 | |
| J05 - 06 | | n/c | |
| J05 - 07 | | n/c | |
| J05 - 08 | | n/c | |
| J05 - 09 | | n/c | |
| J05 - 10 | | n/c | |
| J05 - 11 | | n/c | |
| J05 - 12 | | n/c | |
| J05 - 13 | | n/c | |
| J05 - 14 | | n/c | |
| J05 - 15 | J03 - 27 | RCV R S01 | |
| J05 - 16 | | n/c | |
| J05 - 17 | J05 - 27 GND - 01 | GND01 | |
| J05 - 18 | | n/c | |
| J05 - 19 | | RS01-1 | |
| J05 - 20 | | n/c | |
| J05 - 21 | | n/c | |
| J05 - 22 | | n/c | |
| J05 - 23 | | n/c | |
| J05 - 24 | PWR - 01 | RS01-2 | |
| J05 - 25 | | n/c | |
| J05 - 26 | | n/c | |

Continued

Continued

| FROM | TO | FUNCTION | PUNCH BLOCK |
|----------|----------------------|------------|-------------|
| J05 - 27 | J05 - 17 GND - 01 | GND01 | |
| J05 - 28 | | n/c | |
| J05 - 29 | | n/c | |
| J05 - 30 | | n/c | |
| J05 - 31 | | n/c | |
| J05 - 32 | | n/c | |
| J05 - 33 | | n/c | |
| J05 - 34 | | n/c | |
| J05 - 35 | | n/c | |
| J05 - 36 | | n/c | |
| J05 - 37 | | n/c | |
| J05 - 38 | | n/c | |
| J05 - 39 | | n/c | |
| J05 - 40 | | n/c | |
| J05 - 41 | J01 - 01 | M TIP S01 | |
| J05 - 42 | | n/c | |
| J05 - 43 | | n/c | |
| J05 - 44 | | n/c | |
| J05 - 45 | | n/c | |
| J05 - 46 | | n/c | |
| J05 - 47 | J01 - 26 | M RING S01 | |
| J05 - 48 | | n/c | |
| J05 - 49 | J03 - 26 | XMT R S01 | |
| J05 - 50 | | n/c | |
| J05 - 51 | | n/c | |
| J05 - 52 | | n/c | |
| J05 - 53 | | n/c | |
| J05 - 54 | | n/c | |
| J05 - 55 | J03 - 01 | XMT T S01 | |
| J05 - 56 | | n/c | |
| J06 - 01 | | n/c | |
| J06 - 02 | | n/c | |
| J06 - 03 | | n/c | |
| J06 - 04 | | n/c | |
| J06 - 05 | J03 - 04 | RCV T S02 | |
| J06 - 06 | | n/c | |
| J06 - 07 | | n/c | |
| J06 - 08 | | n/c | |
| J06 - 09 | | n/c | |
| J06 - 10 | | n/c | |
| J06 - 11 | | n/c | |
| J06 - 12 | | n/c | |
| J06 - 13 | | n/c | |
| J06 - 14 | | n/c | |
| J06 - 15 | J03 - 29 | RCV R S02 | |
| J06 - 16 | | n/c | |
| J06 - 17 | J06 - 27 GND - 02 | GND02 | |
| J06 - 18 | | n/c | |
| J06 - 19 | | RS02-1 | |

Continued

Continued

| FROM | TO | FUNCTION | PUNCH BLOCK |
|----------|----------------------|------------|-------------|
| J06 - 20 | | n/c | |
| J06 - 21 | | n/c | |
| J06 - 22 | | n/c | |
| J06 - 23 | | n/c | |
| J06 - 24 | PWR - 02 | RS02-2 | |
| J06 - 25 | | n/c | |
| J06 - 26 | | n/c | |
| J06 - 27 | J06 - 17 GND - 02 | GND02 | |
| J06 - 28 | | n/c | |
| J06 - 29 | | n/c | |
| J06 - 30 | | n/c | |
| J06 - 31 | | n/c | |
| J06 - 32 | | n/c | |
| J06 - 33 | | n/c | |
| J06 - 34 | | n/c | |
| J06 - 35 | | n/c | |
| J06 - 36 | | n/c | |
| J06 - 37 | | n/c | |
| J06 - 38 | | n/c | |
| J06 - 39 | | n/c | |
| J06 - 40 | | n/c | |
| J06 - 41 | J01 - 02 | M TIP S02 | |
| J06 - 42 | | n/c | |
| J06 - 43 | | n/c | |
| J06 - 44 | | n/c | |
| J06 - 45 | | n/c | |
| J06 - 46 | | n/c | |
| J06 - 47 | J01 - 27 | M RING S02 | |
| J06 - 48 | | n/c | |
| J06 - 49 | J03 - 28 | XMT R S02 | |
| J06 - 50 | | n/c | |
| J06 - 51 | | n/c | |
| J06 - 52 | | n/c | |
| J06 - 53 | | n/c | |
| J06 - 54 | | n/c | |
| J06 - 55 | J03 - 03 | XMT T S02 | |
| J06 - 56 | | n/c | |
| J07 - 01 | | n/c | |
| J07 - 02 | | n/c | |
| J07 - 03 | | n/c | |
| J07 - 04 | | n/c | |
| J07 - 05 | J03 - 06 | RCV T S03 | |
| J07 - 06 | | n/c | |
| J07 - 07 | | n/c | |
| J07 - 08 | | n/c | |
| J07 - 09 | | n/c | |
| J07 - 10 | | n/c | |
| J07 - 11 | | n/c | |
| J07 - 12 | | n/c | |
| J07 - 13 | | n/c | |

Continued

Continued

| FROM | TO | FUNCTION | PUNCH BLOCK |
|----------|----------------------|------------|-------------|
| J07 - 14 | | n/c | |
| J07 - 15 | J03 - 31 | RCV R S03 | |
| J07 - 16 | | n/c | |
| J07 - 17 | J07 - 27 GND - 03 | GND03 | |
| J07 - 18 | | n/c | |
| J07 - 19 | | RS03-1 | |
| J07 - 20 | | n/c | |
| J07 - 21 | | n/c | |
| J07 - 22 | | n/c | |
| J07 - 23 | | n/c | |
| J07 - 24 | PWR - 03 | RS03-2 | |
| J07 - 25 | | n/c | |
| J07 - 26 | | n/c | |
| J07 - 27 | J07 - 17 GND - 03 | GND03 | |
| J07 - 28 | | n/c | |
| J07 - 29 | | n/c | |
| J07 - 30 | | n/c | |
| J07 - 31 | | n/c | |
| J07 - 32 | | n/c | |
| J07 - 33 | | n/c | |
| J07 - 34 | | n/c | |
| J07 - 35 | | n/c | |
| J07 - 36 | | n/c | |
| J07 - 37 | | n/c | |
| J07 - 38 | | n/c | |
| J07 - 39 | | n/c | |
| J07 - 40 | | n/c | |
| J07 - 41 | J01 - 03 | M TIP S03 | |
| J07 - 42 | | n/c | |
| J07 - 43 | | n/c | |
| J07 - 44 | | n/c | |
| J07 - 45 | | n/c | |
| J07 - 46 | | n/c | |
| J07 - 47 | J01 - 28 | M RING S03 | |
| J07 - 48 | | n/c | |
| J07 - 49 | J03 - 30 | XMT R S03 | |
| J07 - 50 | | n/c | |
| J07 - 51 | | n/c | |
| J07 - 52 | | n/c | |
| J07 - 53 | | n/c | |
| J07 - 54 | | n/c | |
| J07 - 55 | J03 - 05 | XMT T S03 | |
| J07 - 56 | | n/c | |
| J08 - 01 | | n/c | |
| J08 - 02 | | n/c | |
| J08 - 03 | | n/c | |
| J08 - 04 | | n/c | |
| J08 - 05 | J03 - 08 | RCV T S04 | |
| J08 - 06 | | n/c | |

Continued

Continued

| FROM | TO | FUNCTION | PUNCH BLOCK |
|----------|----------------------|------------|-------------|
| J08 - 07 | | n/c | |
| J08 - 08 | | n/c | |
| J08 - 09 | | n/c | |
| J08 - 10 | | n/c | |
| J08 - 11 | | n/c | |
| J08 - 12 | | n/c | |
| J08 - 13 | | n/c | |
| J08 - 14 | | n/c | |
| J08 - 15 | J03 - 33 | RCV R S04 | |
| J08 - 16 | | n/c | |
| J08 - 17 | J08 - 27 GND - 04 | GND04 | |
| J08 - 18 | | n/c | |
| J08 - 19 | | RS04-1 | |
| J08 - 20 | | n/c | |
| J08 - 21 | | n/c | |
| J08 - 22 | | n/c | |
| J08 - 23 | | n/c | |
| J08 - 24 | PWR - 04 | RS04-2 | |
| J08 - 25 | | n/c | |
| J08 - 26 | | n/c | |
| J08 - 27 | J08 - 17 GND - 04 | GND04 | |
| J08 - 28 | | n/c | |
| J08 - 29 | | n/c | |
| J08 - 30 | | n/c | |
| J08 - 31 | | n/c | |
| J08 - 32 | | n/c | |
| J08 - 33 | | n/c | |
| J08 - 34 | | n/c | |
| J08 - 35 | | n/c | |
| J08 - 36 | | n/c | |
| J08 - 37 | | n/c | |
| J08 - 38 | | n/c | |
| J08 - 39 | | n/c | |
| J08 - 40 | | n/c | |
| J08 - 41 | J01 - 04 | M TIP S04 | |
| J08 - 42 | | n/c | |
| J08 - 43 | | n/c | |
| J08 - 44 | | n/c | |
| J08 - 45 | | n/c | |
| J08 - 46 | | n/c | |
| J08 - 47 | J01 - 29 | M RING S04 | |
| J08 - 48 | | n/c | |
| J08 - 49 | J03 - 32 | XMT R S04 | |
| J08 - 50 | | n/c | |
| J08 - 51 | | n/c | |
| J08 - 52 | | n/c | |
| J08 - 53 | | n/c | |
| J08 - 54 | | n/c | |
| J08 - 55 | J03 - 07 | XMT T S04 | |
| J08 - 56 | | n/c | |

Continued

Continued

| FROM | TO | FUNCTION | PUNCH BLOCK |
|----------|----------------------|------------|-------------|
| J09 - 01 | | n/c | |
| J09 - 02 | | n/c | |
| J09 - 03 | | n/c | |
| J09 - 04 | | n/c | |
| J09 - 05 | J03 - 10 | RCV T S05 | |
| J09 - 06 | | n/c | |
| J09 - 07 | | n/c | |
| J09 - 08 | | n/c | |
| J09 - 09 | | n/c | |
| J09 - 10 | | n/c | |
| J09 - 11 | | n/c | |
| J09 - 12 | | n/c | |
| J09 - 13 | | n/c | |
| J09 - 14 | | n/c | |
| J09 - 15 | J03 - 35 | RCV R S05 | |
| J09 - 16 | | n/c | |
| J09 - 17 | J09 - 27 GND - 05 | GND05 | |
| J09 - 18 | | n/c | |
| J09 - 19 | | RS05-1 | |
| J09 - 20 | | n/c | |
| J09 - 21 | | n/c | |
| J09 - 22 | | n/c | |
| J09 - 23 | | n/c | |
| J09 - 24 | PWR - 05 | RS05-2 | |
| J09 - 25 | | n/c | |
| J09 - 26 | | n/c | |
| J09 - 27 | J09 - 17 GND - 05 | GND05 | |
| J09 - 28 | | n/c | |
| J09 - 29 | | n/c | |
| J09 - 30 | | n/c | |
| J09 - 31 | | n/c | |
| J09 - 32 | | n/c | |
| J09 - 33 | | n/c | |
| J09 - 34 | | n/c | |
| J09 - 35 | | n/c | |
| J09 - 36 | | n/c | |
| J09 - 37 | | n/c | |
| J09 - 38 | | n/c | |
| J09 - 39 | | n/c | |
| J09 - 40 | | n/c | |
| J09 - 41 | J01 - 05 | M TIP S05 | |
| J09 - 42 | | n/c | |
| J09 - 43 | | n/c | |
| J09 - 44 | | n/c | |
| J09 - 45 | | n/c | |
| J09 - 46 | | n/c | |
| J09 - 47 | J01 - 30 | M RING S05 | |
| J09 - 48 | | n/c | |

Continued

Continued

| FROM | TO | FUNCTION | PUNCH BLOCK |
|----------|----------------------|-----------|-------------|
| J09 - 49 | J03 - 34 | XMT R S05 | |
| J09 - 50 | | n/c | |
| J09 - 51 | | n/c | |
| J09 - 52 | | n/c | |
| J09 - 53 | | n/c | |
| J09 - 54 | | n/c | |
| J09 - 55 | J03 - 09 | XMT T S05 | |
| J09 - 56 | | n/c | |
| J10 - 01 | | n/c | |
| J10 - 02 | | n/c | |
| J10 - 03 | | n/c | |
| J10 - 04 | | n/c | |
| J10 - 05 | J03 - 12 | RCV T S06 | |
| J10 - 06 | | n/c | |
| J10 - 07 | | n/c | |
| J10 - 08 | | n/c | |
| J10 - 09 | | n/c | |
| J10 - 10 | | n/c | |
| J10 - 11 | | n/c | |
| J10 - 12 | | n/c | |
| J10 - 13 | | n/c | |
| J10 - 14 | | n/c | |
| J10 - 15 | J03 - 37 | RCV R S06 | |
| J10 - 16 | | n/c | |
| J10 - 17 | J10 - 27 GND - 06 | GND06 | |
| J10 - 18 | | n/c | |
| J10 - 19 | | RS06-1 | |
| J10 - 20 | | n/c | |
| J10 - 21 | | n/c | |
| J10 - 22 | | n/c | |
| J10 - 23 | | n/c | |
| J10 - 24 | PWR - 06 | RS06-2 | |
| J10 - 25 | | n/c | |
| J10 - 26 | | n/c | |
| J10 - 27 | J10 - 17 GND - 06 | GND06 | |
| J10 - 28 | | n/c | |
| J10 - 29 | | n/c | |
| J10 - 30 | | n/c | |
| J10 - 31 | | n/c | |
| J10 - 32 | | n/c | |
| J10 - 33 | | n/c | |
| J10 - 34 | | n/c | |
| J10 - 35 | | n/c | |
| J10 - 36 | | n/c | |
| J10 - 37 | | n/c | |
| J10 - 38 | | n/c | |
| J10 - 39 | | n/c | |
| J10 - 40 | | n/c | |
| J10 - 41 | J01 - 06 | M TIP S06 | |

Continued

Continued

| FROM | TO | FUNCTION | PUNCH BLOCK |
|----------|----------------------|------------|-------------|
| J10 - 42 | | n/c | |
| J10 - 43 | | n/c | |
| J10 - 44 | | n/c | |
| J10 - 45 | | n/c | |
| J10 - 46 | | n/c | |
| J10 - 47 | J01 - 31 | M RING S06 | |
| J10 - 48 | | n/c | |
| J10 - 49 | J03 - 36 | XMT R S06 | |
| J10 - 50 | | n/c | |
| J10 - 51 | | n/c | |
| J10 - 52 | | n/c | |
| J10 - 53 | | n/c | |
| J10 - 54 | | n/c | |
| J10 - 55 | J03 - 11 | XMT T S06 | |
| J10 - 56 | | n/c | |
| J11 - 01 | | n/c | |
| J11 - 02 | | n/c | |
| J11 - 03 | | n/c | |
| J11 - 04 | | n/c | |
| J11 - 05 | J03 - 14 | RCV T S07 | |
| J11 - 06 | | n/c | |
| J11 - 07 | | n/c | |
| J11 - 08 | | n/c | |
| J11 - 09 | | n/c | |
| J11 - 10 | | n/c | |
| J11 - 11 | | n/c | |
| J11 - 12 | | n/c | |
| J11 - 13 | | n/c | |
| J11 - 14 | | n/c | |
| J11 - 15 | J03 - 39 | RCV R S07 | |
| J11 - 16 | | n/c | |
| J11 - 17 | J11 - 27 GND - 07 | GND07 | |
| J11 - 18 | | n/c | |
| J11 - 19 | | RS07-1 | |
| J11 - 20 | | n/c | |
| J11 - 21 | | n/c | |
| J11 - 22 | | n/c | |
| J11 - 23 | | n/c | |
| J11 - 24 | PWR - 07 | RS07-2 | |
| J11 - 25 | | n/c | |
| J11 - 26 | | n/c | |
| J11 - 27 | J11 - 17 GND - 07 | GND07 | |
| J11 - 28 | | n/c | |
| J11 - 29 | | n/c | |
| J11 - 30 | | n/c | |
| J11 - 31 | | n/c | |
| J11 - 32 | | n/c | |
| J11 - 33 | | n/c | |
| J11 - 34 | | n/c | |

Continued

Continued

| FROM | TO | FUNCTION | PUNCH BLOCK |
|----------|----------------------|------------|-------------|
| J11 - 35 | | n/c | |
| J11 - 36 | | n/c | |
| J11 - 37 | | n/c | |
| J11 - 38 | | n/c | |
| J11 - 39 | | n/c | |
| J11 - 40 | | n/c | |
| J11 - 41 | J01 - 07 | M TIP S07 | |
| J11 - 42 | | n/c | |
| J11 - 43 | | n/c | |
| J11 - 44 | | n/c | |
| J11 - 45 | | n/c | |
| J11 - 46 | | n/c | |
| J11 - 47 | J01 - 32 | M RING S07 | |
| J11 - 48 | | n/c | |
| J11 - 49 | J03 - 38 | XMT R S07 | |
| J11 - 50 | | n/c | |
| J11 - 51 | | n/c | |
| J11 - 52 | | n/c | |
| J11 - 53 | | n/c | |
| J11 - 54 | | n/c | |
| J11 - 55 | J03 - 13 | XMT T S07 | |
| J11 - 56 | | n/c | |
| J12 - 01 | | n/c | |
| J12 - 02 | | n/c | |
| J12 - 03 | | n/c | |
| J12 - 04 | | n/c | |
| J12 - 05 | J03 - 16 | RCV T S08 | |
| J12 - 06 | | n/c | |
| J12 - 07 | | n/c | |
| J12 - 08 | | n/c | |
| J12 - 09 | | n/c | |
| J12 - 10 | | n/c | |
| J12 - 11 | | n/c | |
| J12 - 12 | | n/c | |
| J12 - 13 | | n/c | |
| J12 - 14 | | n/c | |
| J12 - 15 | J03 - 41 | RCV R S08 | |
| J12 - 16 | | n/c | |
| J12 - 17 | J12 - 27 GND - 08 | GND08 | |
| J12 - 18 | | n/c | |
| J12 - 19 | | RS08-1 | |
| J12 - 20 | | n/c | |
| J12 - 21 | | n/c | |
| J12 - 22 | | n/c | |
| J12 - 23 | | n/c | |
| J12 - 24 | PWR - 08 | RS08-2 | |
| J12 - 25 | | n/c | |
| J12 - 26 | | n/c | |
| J12 - 27 | J12 - 17 GND - 08 | GND08 | |

Continued

Continued

| FROM | TO | FUNCTION | PUNCH BLOCK |
|----------|----------------------|------------|-------------|
| J12 - 28 | | n/c | |
| J12 - 29 | | n/c | |
| J12 - 30 | | n/c | |
| J12 - 31 | | n/c | |
| J12 - 32 | | n/c | |
| J12 - 33 | | n/c | |
| J12 - 34 | | n/c | |
| J12 - 35 | | n/c | |
| J12 - 36 | | n/c | |
| J12 - 37 | | n/c | |
| J12 - 38 | | n/c | |
| J12 - 39 | | n/c | |
| J12 - 40 | | n/c | |
| J12 - 41 | J01 - 08 | M TIP S08 | |
| J12 - 42 | | n/c | |
| J12 - 43 | | n/c | |
| J12 - 44 | | n/c | |
| J12 - 45 | | n/c | |
| J12 - 46 | | n/c | |
| J12 - 47 | J01 - 33 | M RING S08 | |
| J12 - 48 | | n/c | |
| J12 - 49 | J03 - 40 | XMT R S08 | |
| J12 - 50 | | n/c | |
| J12 - 51 | | n/c | |
| J12 - 52 | | n/c | |
| J12 - 53 | | n/c | |
| J12 - 54 | | n/c | |
| J12 - 55 | J03 - 15 | XMT T S08 | |
| J12 - 56 | | n/c | |
| J13 - 01 | | n/c | |
| J13 - 02 | | n/c | |
| J13 - 03 | | n/c | |
| J13 - 04 | | n/c | |
| J13 - 05 | J03 - 18 | RCV T S09 | |
| J13 - 06 | | n/c | |
| J13 - 07 | | n/c | |
| J13 - 08 | | n/c | |
| J13 - 09 | | n/c | |
| J13 - 10 | | n/c | |
| J13 - 11 | | n/c | |
| J13 - 12 | | n/c | |
| J13 - 13 | | n/c | |
| J13 - 14 | | n/c | |
| J13 - 15 | J03 - 43 | RCV R S09 | |
| J13 - 16 | | n/c | |
| J13 - 17 | J13 - 27 GND - 09 | GND09 | |
| J13 - 18 | | n/c | |
| J13 - 19 | | RS09-1 | |
| J13 - 20 | | n/c | |
| J13 - 21 | | n/c | |

Continued

Continued

| FROM | TO | FUNCTION | PUNCH BLOCK |
|----------|----------------------|------------|-------------|
| J13 - 22 | | n/c | |
| J13 - 23 | | n/c | |
| J13 - 24 | PWR - 09 | RS09-2 | |
| J13 - 25 | | n/c | |
| J13 - 26 | | n/c | |
| J13 - 27 | J13 - 17 GND - 09 | GND09 | |
| J13 - 28 | | n/c | |
| J13 - 29 | | n/c | |
| J13 - 30 | | n/c | |
| J13 - 31 | | n/c | |
| J13 - 32 | | n/c | |
| J13 - 33 | | n/c | |
| J13 - 34 | | n/c | |
| J13 - 35 | | n/c | |
| J13 - 36 | | n/c | |
| J13 - 37 | | n/c | |
| J13 - 38 | | n/c | |
| J13 - 39 | | n/c | |
| J13 - 40 | | n/c | |
| J13 - 41 | J01 - 09 | M TIP S09 | |
| J13 - 42 | | n/c | |
| J13 - 43 | | n/c | |
| J13 - 44 | | n/c | |
| J13 - 45 | | n/c | |
| J13 - 46 | | n/c | |
| J13 - 47 | J01 - 34 | M RING S09 | |
| J13 - 48 | | n/c | |
| J13 - 49 | J03 - 42 | XMT R S09 | |
| J13 - 50 | | n/c | |
| J13 - 51 | | n/c | |
| J13 - 52 | | n/c | |
| J13 - 53 | | n/c | |
| J13 - 54 | | n/c | |
| J13 - 55 | J03 - 17 | XMT T S09 | |
| J13 - 56 | | n/c | |
| J14 - 01 | | n/c | |
| J14 - 02 | | n/c | |
| J14 - 03 | | n/c | |
| J14 - 04 | | n/c | |
| J14 - 05 | J03 - 20 | RCV T S10 | |
| J14 - 06 | | n/c | |
| J14 - 07 | | n/c | |
| J14 - 08 | | n/c | |
| J14 - 09 | | n/c | |
| J14 - 10 | | n/c | |
| J14 - 11 | | n/c | |
| J14 - 12 | | n/c | |
| J14 - 13 | | n/c | |
| J14 - 14 | | n/c | |
| J14 - 15 | J03 - 45 | RCV R S10 | |

Continued

Continued

| FROM | TO | FUNCTION | PUNCH BLOCK |
|----------|----------------------|------------|-------------|
| J14 - 16 | | n/c | |
| J14 - 17 | J14 - 27 GND - 10 | GND10 | |
| J14 - 18 | | n/c | |
| J14 - 19 | | RS10-1 | |
| J14 - 20 | | n/c | |
| J14 - 21 | | n/c | |
| J14 - 22 | | n/c | |
| J14 - 23 | | n/c | |
| J14 - 24 | PWR - 10 | RS10-2 | |
| J14 - 25 | | n/c | |
| J14 - 26 | | n/c | |
| J14 - 27 | J14 - 17 GND - 10 | GND10 | |
| J14 - 28 | | n/c | |
| J14 - 29 | | n/c | |
| J14 - 30 | | n/c | |
| J14 - 31 | | n/c | |
| J14 - 32 | | n/c | |
| J14 - 33 | | n/c | |
| J14 - 34 | | n/c | |
| J14 - 35 | | n/c | |
| J14 - 36 | | n/c | |
| J14 - 37 | | n/c | |
| J14 - 38 | | n/c | |
| J14 - 39 | | n/c | |
| J14 - 40 | | n/c | |
| J14 - 41 | J01 - 10 | M TIP S10 | |
| J14 - 42 | | n/c | |
| J14 - 43 | | n/c | |
| J14 - 44 | | n/c | |
| J14 - 45 | | n/c | |
| J14 - 46 | | n/c | |
| J14 - 47 | J01 - 35 | M RING S10 | |
| J14 - 48 | | n/c | |
| J14 - 49 | J03 - 44 | XMT R S10 | |
| J14 - 50 | | n/c | |
| J14 - 51 | | n/c | |
| J14 - 52 | | n/c | |
| J14 - 53 | | n/c | |
| J14 - 54 | | n/c | |
| J14 - 55 | J03 - 19 | XMT T S10 | |
| J14 - 56 | | n/c | |
| J15 - 01 | | n/c | |
| J15 - 02 | | n/c | |
| J15 - 03 | | n/c | |
| J15 - 04 | | n/c | |
| J15 - 05 | J03 - 22 | RCV T S11 | |
| J15 - 06 | | n/c | |
| J15 - 07 | | n/c | |
| J15 - 08 | | n/c | |

Continued

Continued

| FROM | TO | FUNCTION | PUNCH BLOCK |
|----------|----------------------|------------|-------------|
| J15 - 09 | | n/c | |
| J15 - 10 | | n/c | |
| J15 - 11 | | n/c | |
| J15 - 12 | | n/c | |
| J15 - 13 | | n/c | |
| J15 - 14 | | n/c | |
| J15 - 15 | J03 - 47 | RCV R S11 | |
| J15 - 16 | | n/c | |
| J15 - 17 | J15 - 27 GND - 11 | GND11 | |
| J15 - 18 | | n/c | |
| J15 - 19 | | RS11-1 | |
| J15 - 20 | | n/c | |
| J15 - 21 | | n/c | |
| J15 - 22 | | n/c | |
| J15 - 23 | | n/c | |
| J15 - 24 | PWR - 11 | RS11-2 | |
| J15 - 25 | | n/c | |
| J15 - 26 | | n/c | |
| J15 - 27 | J15 - 17 GND - 11 | GND11 | |
| J15 - 28 | | n/c | |
| J15 - 29 | | n/c | |
| J15 - 30 | | n/c | |
| J15 - 31 | | n/c | |
| J15 - 32 | | n/c | |
| J15 - 33 | | n/c | |
| J15 - 34 | | n/c | |
| J15 - 35 | | n/c | |
| J15 - 36 | | n/c | |
| J15 - 37 | | n/c | |
| J15 - 38 | | n/c | |
| J15 - 39 | | n/c | |
| J15 - 40 | | n/c | |
| J15 - 41 | J01 - 11 | M TIP S11 | |
| J15 - 42 | | n/c | |
| J15 - 43 | | n/c | |
| J15 - 44 | | n/c | |
| J15 - 45 | | n/c | |
| J15 - 46 | | n/c | |
| J15 - 47 | J01 - 36 | M RING S11 | |
| J15 - 48 | | n/c | |
| J15 - 49 | J03 - 46 | XMT R S11 | |
| J15 - 50 | | n/c | |
| J15 - 51 | | n/c | |
| J15 - 52 | | n/c | |
| J15 - 53 | | n/c | |
| J15 - 54 | | n/c | |
| J15 - 55 | J03 - 21 | XMT T S11 | |
| J15 - 56 | | n/c | |

Continued

Continued

| FROM | TO | FUNCTION | PUNCH BLOCK |
|----------|----------------------|------------|-------------|
| J16 - 01 | | n/c | |
| J16 - 02 | | n/c | |
| J16 - 03 | | n/c | |
| J16 - 04 | | n/c | |
| J16 - 05 | J03 - 24 | RCV T S12 | |
| J16 - 06 | | n/c | |
| J16 - 07 | | n/c | |
| J16 - 08 | | n/c | |
| J16 - 09 | | n/c | |
| J16 - 10 | | n/c | |
| J16 - 11 | | n/c | |
| J16 - 12 | | n/c | |
| J16 - 13 | | n/c | |
| J16 - 14 | | n/c | |
| J16 - 15 | J03 - 49 | RCV R S12 | |
| J16 - 16 | | n/c | |
| J16 - 17 | J16 - 27 GND - 12 | GND12 | |
| J16 - 18 | | n/c | |
| J16 - 19 | | RS12-1 | |
| J16 - 20 | | n/c | |
| J16 - 21 | | n/c | |
| J16 - 22 | | n/c | |
| J16 - 23 | | n/c | |
| J16 - 24 | PWR - 12 | RS12-2 | |
| J16 - 25 | | n/c | |
| J16 - 26 | | n/c | |
| J16 - 27 | J16 - 17 GND - 12 | GND12 | |
| J16 - 28 | | n/c | |
| J16 - 29 | | n/c | |
| J16 - 30 | | n/c | |
| J16 - 31 | | n/c | |
| J16 - 32 | | n/c | |
| J16 - 33 | | n/c | |
| J16 - 34 | | n/c | |
| J16 - 35 | | n/c | |
| J16 - 36 | | n/c | |
| J16 - 37 | | n/c | |
| J16 - 38 | | n/c | |
| J16 - 39 | | n/c | |
| J16 - 40 | | n/c | |
| J16 - 41 | J01 - 12 | M TIP S12 | |
| J16 - 42 | | n/c | |
| J16 - 43 | | n/c | |
| J16 - 44 | | n/c | |
| J16 - 45 | | n/c | |
| J16 - 46 | | n/c | |
| J16 - 47 | J01 - 37 | M RING S12 | |
| J16 - 48 | | n/c | |
| J16 - 49 | J03 - 48 | XMT R S12 | |

Continued

Continued

| FROM | TO | FUNCTION | PUNCH BLOCK |
|----------|----------|-----------|-------------|
| J16 - 50 | | n/c | |
| J16 - 51 | | n/c | |
| J16 - 52 | | n/c | |
| J16 - 53 | | n/c | |
| J16 - 54 | | n/c | |
| J16 - 55 | J03 - 23 | XMT T S12 | |
| J16 - 56 | | n/c | |
| PWR - 01 | J05 - 24 | RS01-2 | |
| PWR - 02 | J06 - 24 | RS02-2 | |
| PWR - 03 | J07 - 24 | RS03-2 | |
| PWR - 04 | J08 - 24 | RS04-2 | |
| PWR - 05 | J09 - 24 | RS05-2 | |
| PWR - 06 | J10 - 24 | RS06-2 | |
| PWR - 07 | J11 - 24 | RS07-2 | |
| PWR - 08 | J12 - 24 | RS08-2 | |
| PWR - 09 | J13 - 24 | RS09-2 | |
| PWR - 10 | J14 - 24 | RS10-2 | |
| PWR - 11 | J15 - 24 | RS11-2 | |
| PWR - 12 | J16 - 24 | RS12-2 | |

NOTE

A 390 ohm resistor must be installed between Pins 19 & 24 of J05 thru J16.

The FUNCTION "n/c" means that signal is not used in this application, but it does NOT mean that no signal is present.

FUNCTION LIST
ALARMS HYBRID SHELF / FUNCTION LIST REV. ___

| | |
|------------|--------------------------|
| GND01 | J05(17),J05(27),GND(01); |
| GND02 | J06(17),J06(27),GND(02); |
| GND03 | J07(17),J07(27),GND(03); |
| GND04 | J08(17),J08(27),GND(04); |
| GND05 | J09(17),J09(27),GND(05); |
| GND06 | J10(17),J10(27),GND(06); |
| GND07 | J11(17),J11(27),GND(07); |
| GND08 | J12(17),J12(27),GND(08); |
| GND09 | J13(17),J13(27),GND(09); |
| GND10 | J14(17),J14(27),GND(10); |
| GND11 | J15(17),J15(27),GND(11); |
| GND12 | J16(17),J16(27),GND(12); |
| M RING S01 | J01(26),J05(47); |
| M RING S02 | J01(27),J06(47); |
| M RING S03 | J01(28),J07(47); |
| M RING S04 | J01(29),J08(47); |
| M RING S05 | J01(30),J09(47); |
| M RING S06 | J01(31),J10(47); |
| M RING S07 | J01(32),J11(47); |
| M RING S08 | J01(33),J12(47); |
| M RING S09 | J01(34),J13(47); |
| M RING S10 | J01(35),J14(47); |
| M RING S11 | J01(36),J15(47); |
| M RING S12 | J01(37),J16(47); |
| M TIP S01 | J01(01),J05(41); |
| M TIP S02 | J01(02),J06(41); |

Continued

Continued

| | |
|-----------|------------------|
| M TIP S03 | J01(03),J07(41); |
| M TIP S04 | J01(04),J08(41); |
| M TIP S05 | J01(05),J09(41); |
| M TIP S06 | J01(06),J10(41); |
| M TIP S07 | J01(07),J11(41); |
| M TIP S08 | J01(08),J12(41); |
| M TIP S09 | J01(09),J13(41); |
| M TIP S10 | J01(10),J14(41); |
| M TIP S11 | J01(11),J15(41); |
| M TIP S12 | J01(12),J16(41); |
| RCV R S01 | J03(27),J05(15); |
| RCV R S02 | J03(29),J06(15); |
| RCV R S03 | J03(31),J07(15); |
| RCV R S04 | J03(33),J08(15); |
| RCV R S05 | J03(35),J09(15); |
| RCV R S06 | J03(37),J10(15); |
| RCV R S07 | J03(39),J11(15); |
| RCV R S08 | J03(41),J12(15); |
| RCV R S09 | J03(43),J13(15); |
| RCV R S10 | J03(45),J14(15); |
| RCV R S11 | J03(47),J15(15); |
| RCV R S12 | J03(49),J16(15); |
| RCV T S01 | J03(02),J05(05); |
| RCV T S02 | J03(04),J06(05); |
| RCV T S03 | J03(06),J07(05); |
| RCV T S04 | J03(08),J08(05); |
| RCV T S05 | J03(10),J09(05); |

Continued

Continued

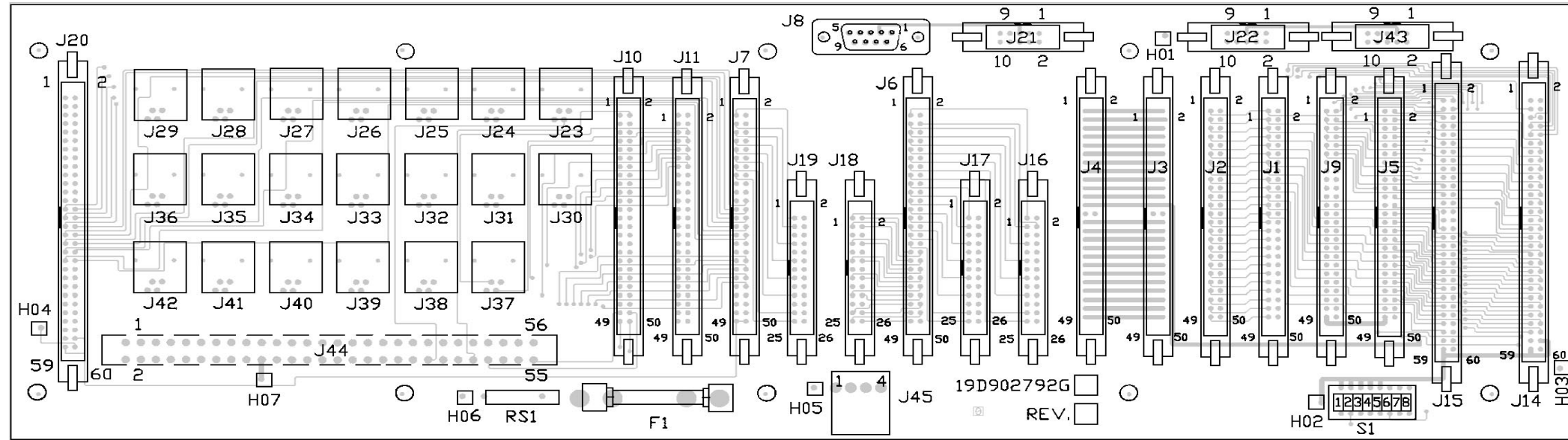
| | |
|-----------|------------------|
| RCV T S06 | J03(12),J10(05); |
| RCV T S07 | J03(14),J11(05); |
| RCV T S08 | J03(16),J12(05); |
| RCV T S09 | J03(18),J13(05); |
| RCV T S10 | J03(20),J14(05); |
| RCV T S11 | J03(22),J15(05); |
| RCV T S12 | J03(24),J16(05); |
| RS01-2 | J05(24),PWR(01); |
| RS02-2 | J06(24),PWR(02); |
| RS03-2 | J07(24),PWR(03); |
| RS04-2 | J08(24),PWR(04); |
| RS05-2 | J09(24),PWR(05); |
| RS06-2 | J10(24),PWR(06); |
| RS07-2 | J11(24),PWR(07); |
| RS08-2 | J12(24),PWR(08); |
| RS09-2 | J13(24),PWR(09); |
| RS10-2 | J14(24),PWR(10); |
| RS11-2 | J15(24),PWR(11); |
| RS12-2 | J16(24),PWR(12); |
| XMT R S01 | J03(26),J05(49); |
| XMT R S02 | J03(28),J06(49); |
| XMT R S03 | J03(30),J07(49); |
| XMT R S04 | J03(32),J08(49); |
| XMT R S05 | J03(34),J09(49); |
| XMT R S06 | J03(36),J10(49); |
| XMT R S07 | J03(38),J11(49); |
| XMT R S08 | J03(40),J12(49); |

Continued

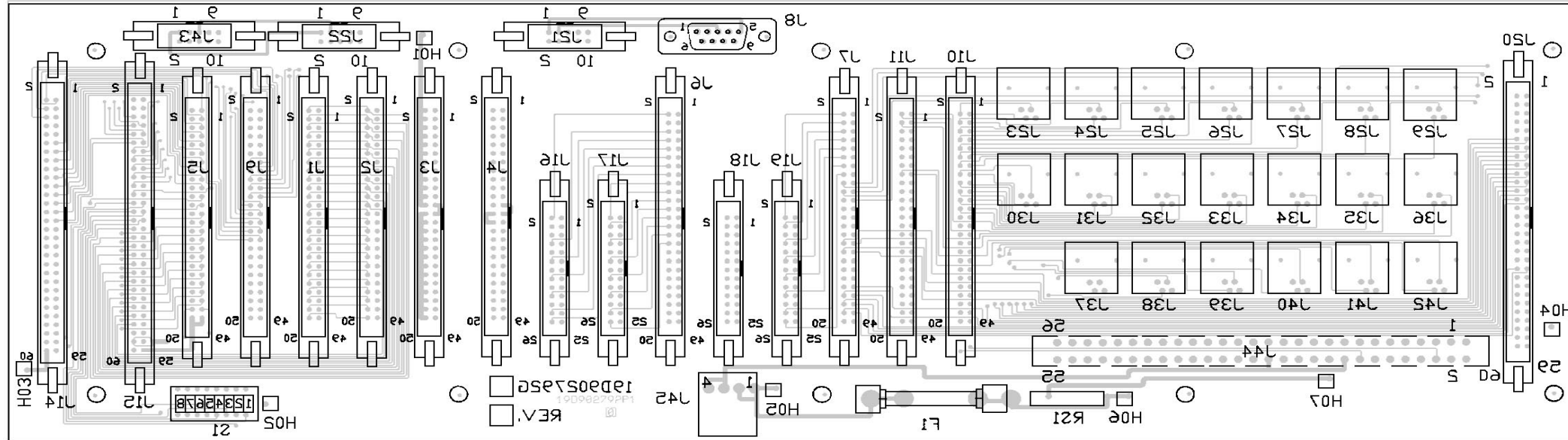
Continued

| | |
|-----------|------------------|
| XMT R S09 | J03(42),J13(49); |
| XMT R S10 | J03(44),J14(49); |
| XMT R S11 | J03(46),J15(49); |
| XMT R S12 | J03(48),J16(49); |
| XMT T S01 | J03(01),J05(55); |
| XMT T S02 | J03(03),J06(55); |
| XMT T S03 | J03(05),J07(55); |
| XMT T S04 | J03(07),J08(55); |
| XMT T S05 | J03(09),J09(55); |
| XMT T S06 | J03(11),J10(55); |
| XMT T S07 | J03(13),J11(55); |
| XMT T S08 | J03(15),J12(55); |
| XMT T S09 | J03(17),J13(55); |
| XMT T S10 | J03(19),J14(55); |
| XMT T S11 | J03(21),J15(55); |
| XMT T S12 | J03(23),J16(55); |

COMPONENT SIDE



SOLDER SIDE



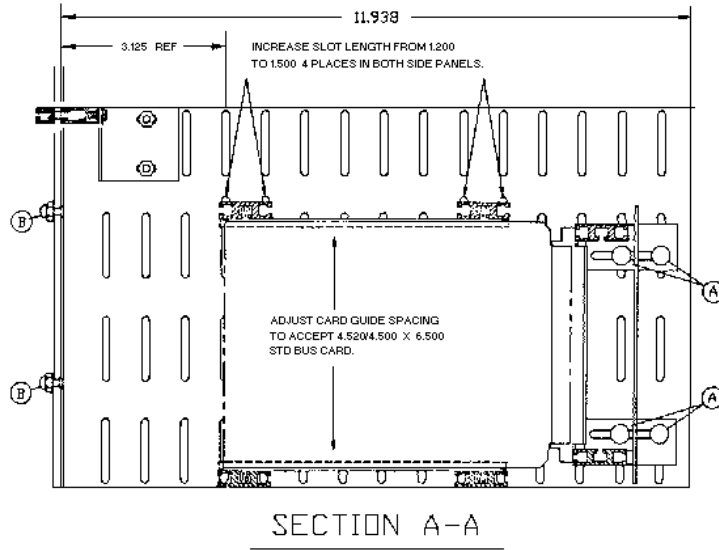
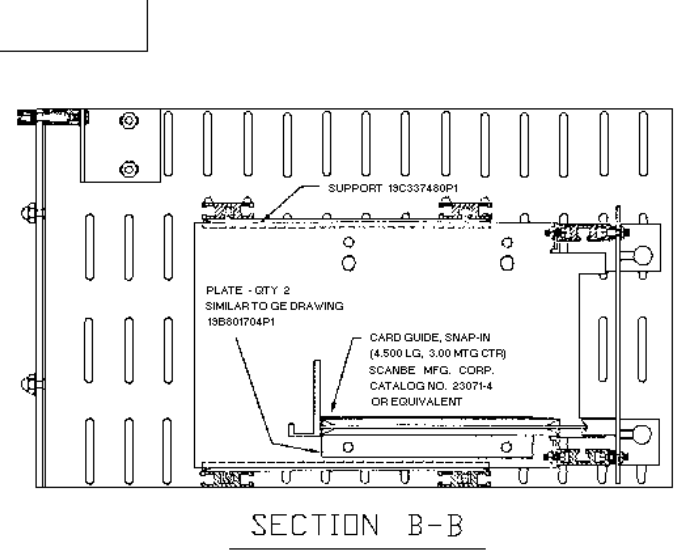
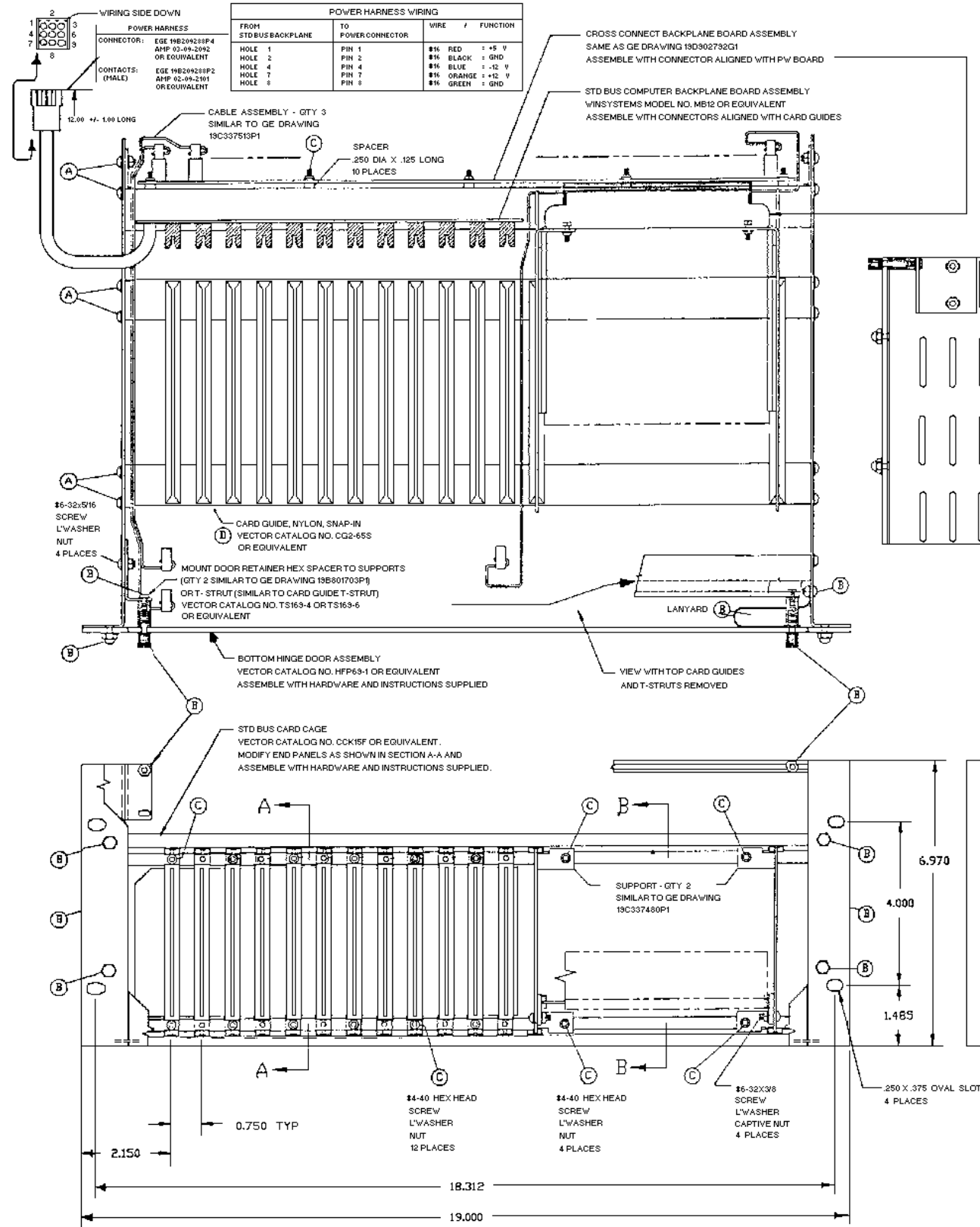
CROSS CONNECT BACKPLANE

19D902792G2

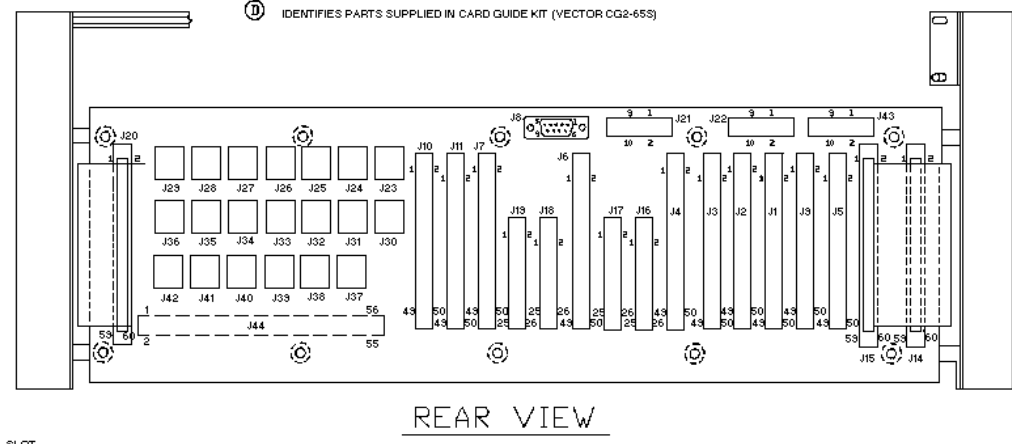
(19D902791, Mark Component Side, Rev. 1A)

(19D902791, Component Side, Rev. 0)

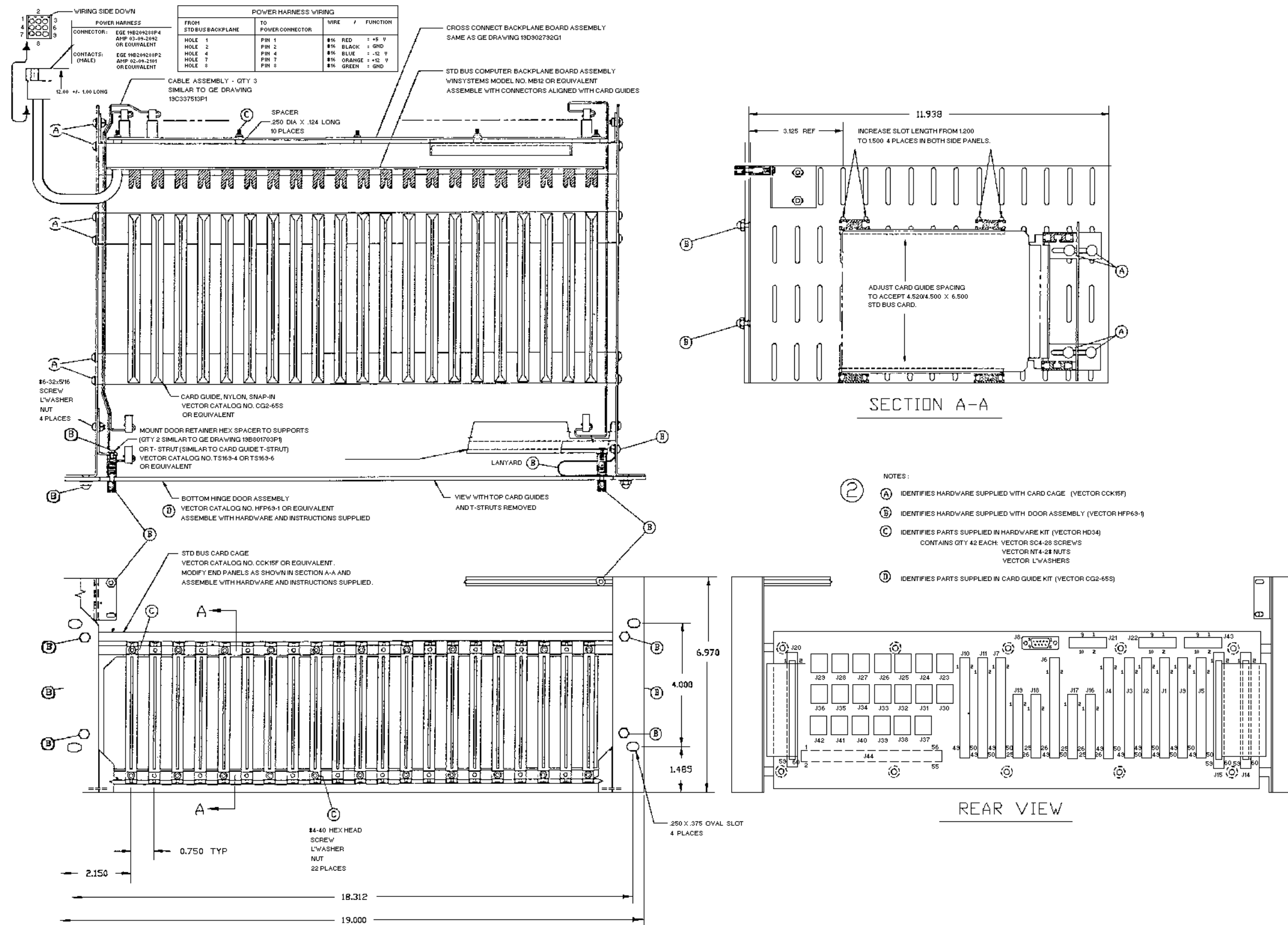
(19D902791, Solder Side, Rev. 0)



- NOTES:
- ① (A) IDENTIFIES HARDWARE SUPPLIED WITH CARD CAGE (VECTOR CCK15F)
 - (B) IDENTIFIES HARDWARE SUPPLIED WITH DOOR ASSEMBLY (VECTOR HFP63-1)
 - (C) IDENTIFIES PARTS SUPPLIED IN HARDWARE KIT (VECTOR HD34)
CONTAINS QTY 42 EACH: VECTOR SC4-28 SCREWS
VECTOR MT4-28 NUTS
VECTOR L'WASHERS
 - (D) IDENTIFIES PARTS SUPPLIED IN CARD GUIDE KIT (VECTOR CG2-65S)

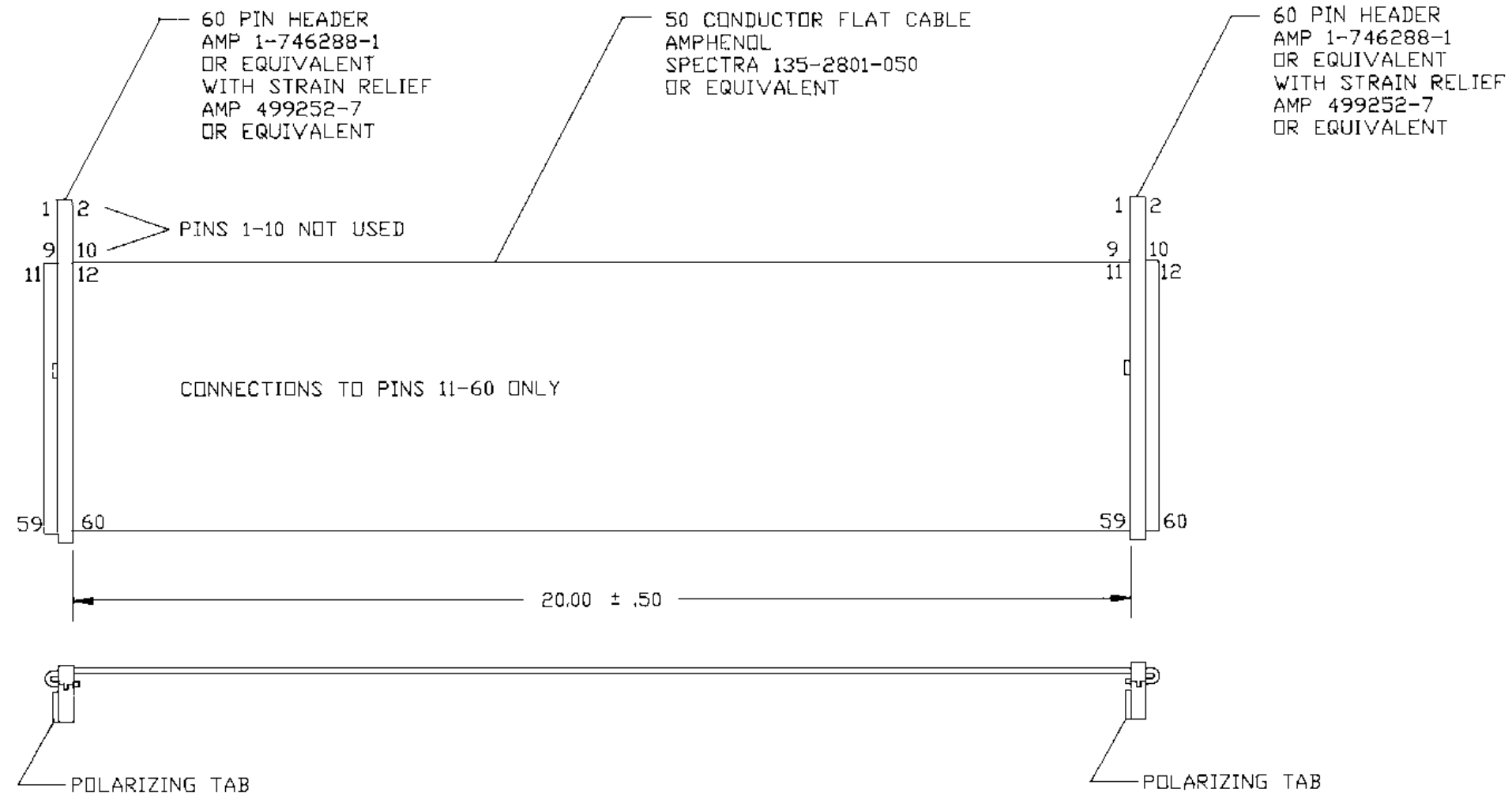


ALARM SHELF
19D902821P1
(19D902821, Sh. 1, Rev. 2)



**ALARM SHELF
19D902821P1**

(19D902821, Sh. 2, Rev. 2)



PART ①

THE HIGHEST REVISION NO. ON ANY SHEET IS THE REVISION FOR ALL SHEETS OF THIS DRAWING

PURCHASE FROM AN APPROVED VENDOR
THIS DRAWING SUBJECT TO THE PROVISIONS OF 19A700070
PURCHASING TO SUPPLY VENDOR MATERIAL MUST MEET G.E.
WITH COPIES OF THIS DRAWING INCOMING INSPECTION & TEST
AND 19A700070 SAMPLE PER 19A700070P3

CABLE 19C337513P1
(19C3373513, Sh. 1, Rev. 3)