

**MAINTENANCE MANUAL  
SIMULCAST SYSTEM  
COMPUTER SHELF  
19D438294G2**

**TABLE OF CONTENTS**

	<u>Page</u>
SPECIFICATIONS.....	1
DESCRIPTIONS.....	2
ASSEMBLY DIAGRAM.....	3

**SPECIFICATIONS**

COLOR	Medium Gray
DIMENSIONS (H x W)	3.5" x 19.00"

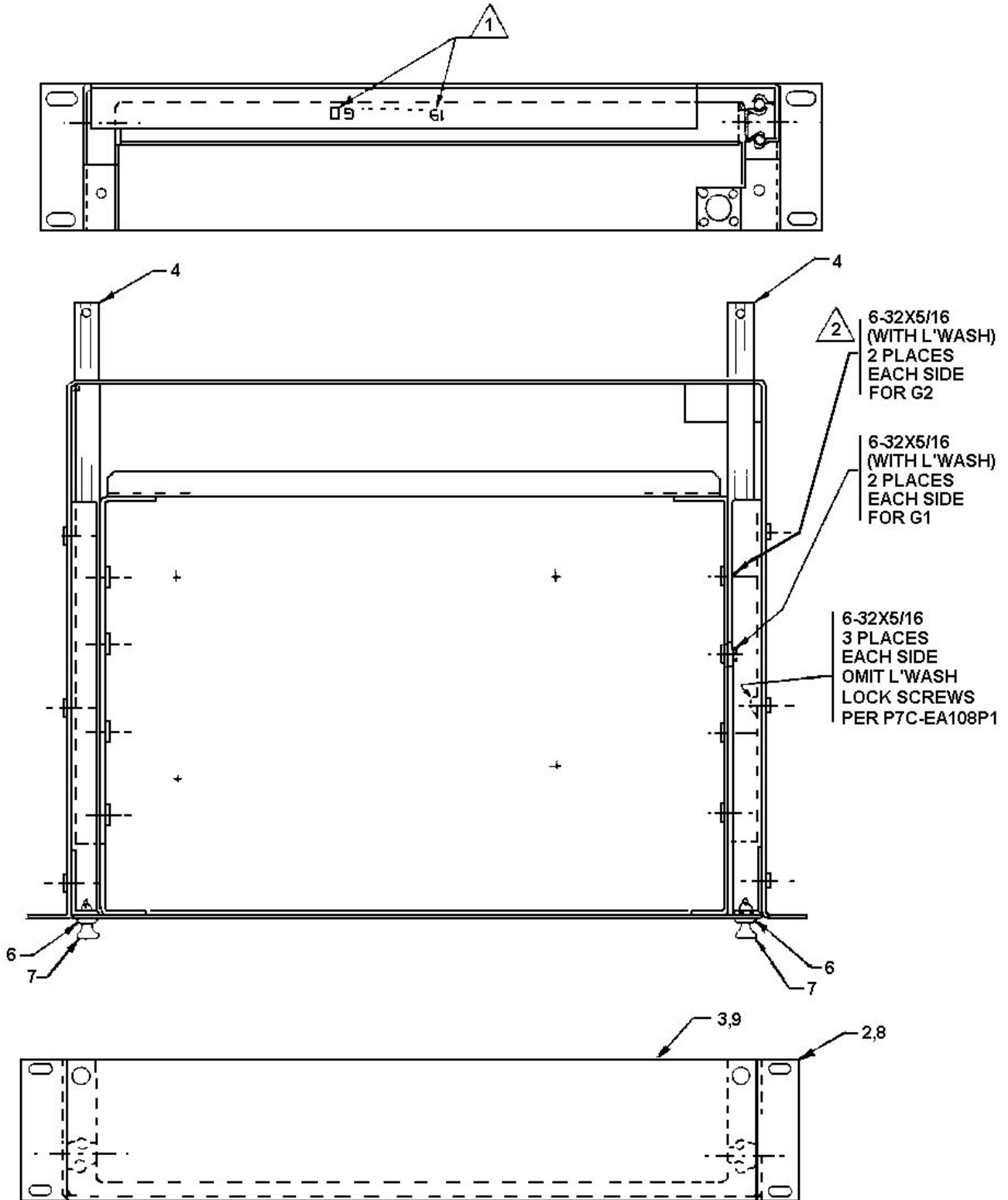
**DESCRIPTION**

The Computer Shelf (19D438294G2), used with the EDACS Simulcast Communications System, slides out using pull latch releases located on the front of the shelf. The shelf is equipped with computer support

19D903067G1, providing a location for mounting a lap-top computer, Option DE1K (19C337515P10). This computer is similar to a Compaq 286 and provides programming capability for the Simulcast Alarm System.

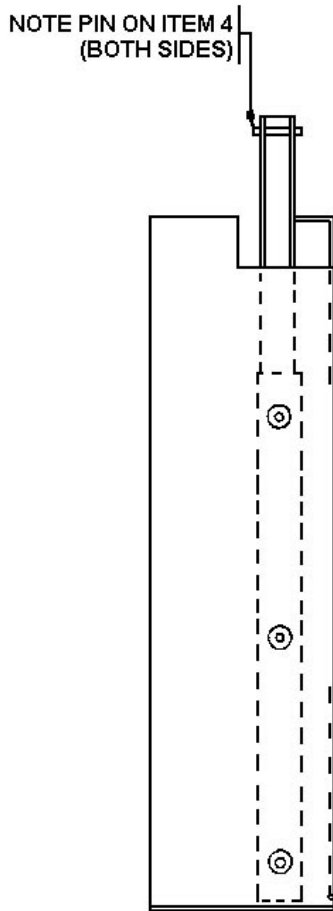


**Ericsson GE Mobile Communications Inc.**  
Mountain View Road • Lynchburg, Virginia 24502



**COMPUTER SHELF**

(19D438294, Sh. 1, Rev. 3)

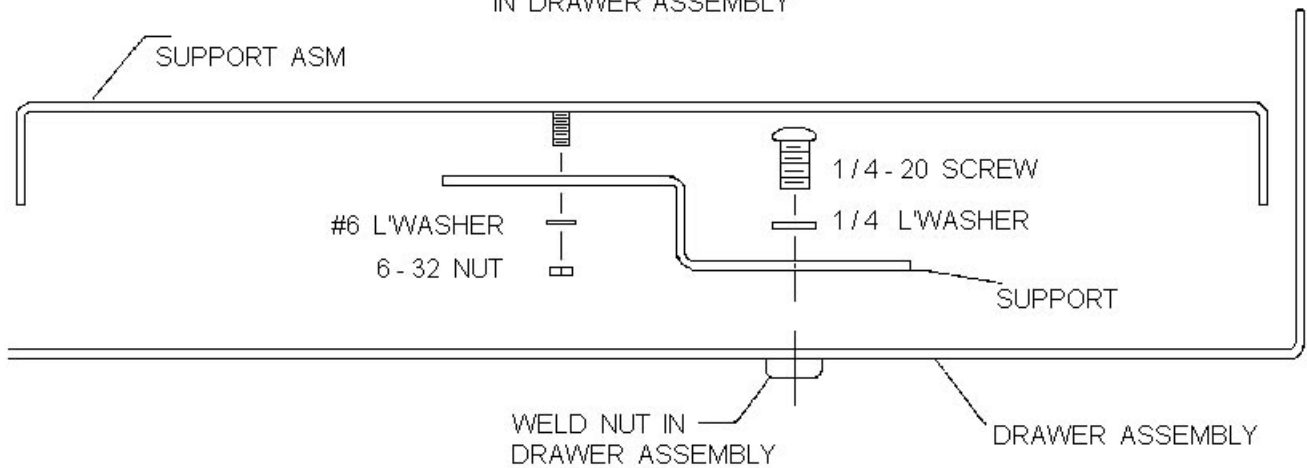


GROUP **2** ASSEMBLY

19D438294G2 MATERIAL LIST

ITEM	IDENTIFICATION	DESCRIPTION	QTY
1	FIGURE 1	ASM	X
4	19B209480P1	DWR SL	1
6	19B801061P1	LTH RELS	2
7	19B801061P3	LTH RELS	2
8	19C336839G2	SHELF	1
9	19C336838G2	TRAY	1

INSTALLATION OF COMPUTER SUPPORT  
IN DRAWER ASSEMBLY



**COMPUTER SHELF**

(19D438294, Sh. 1, 2, Rev. 3)