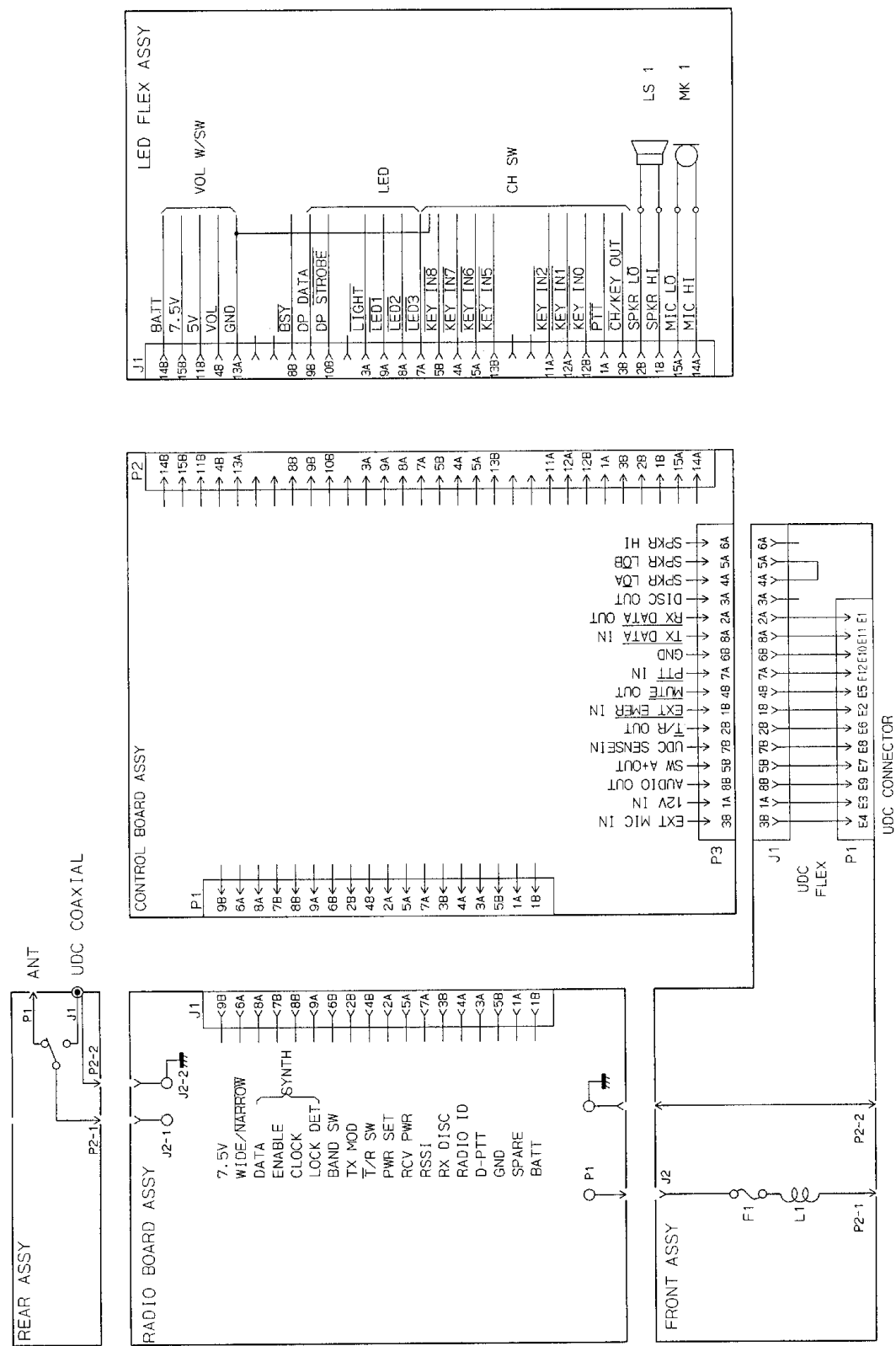


SERVICE ASSEMBLIES FOR M-RK RADIOS

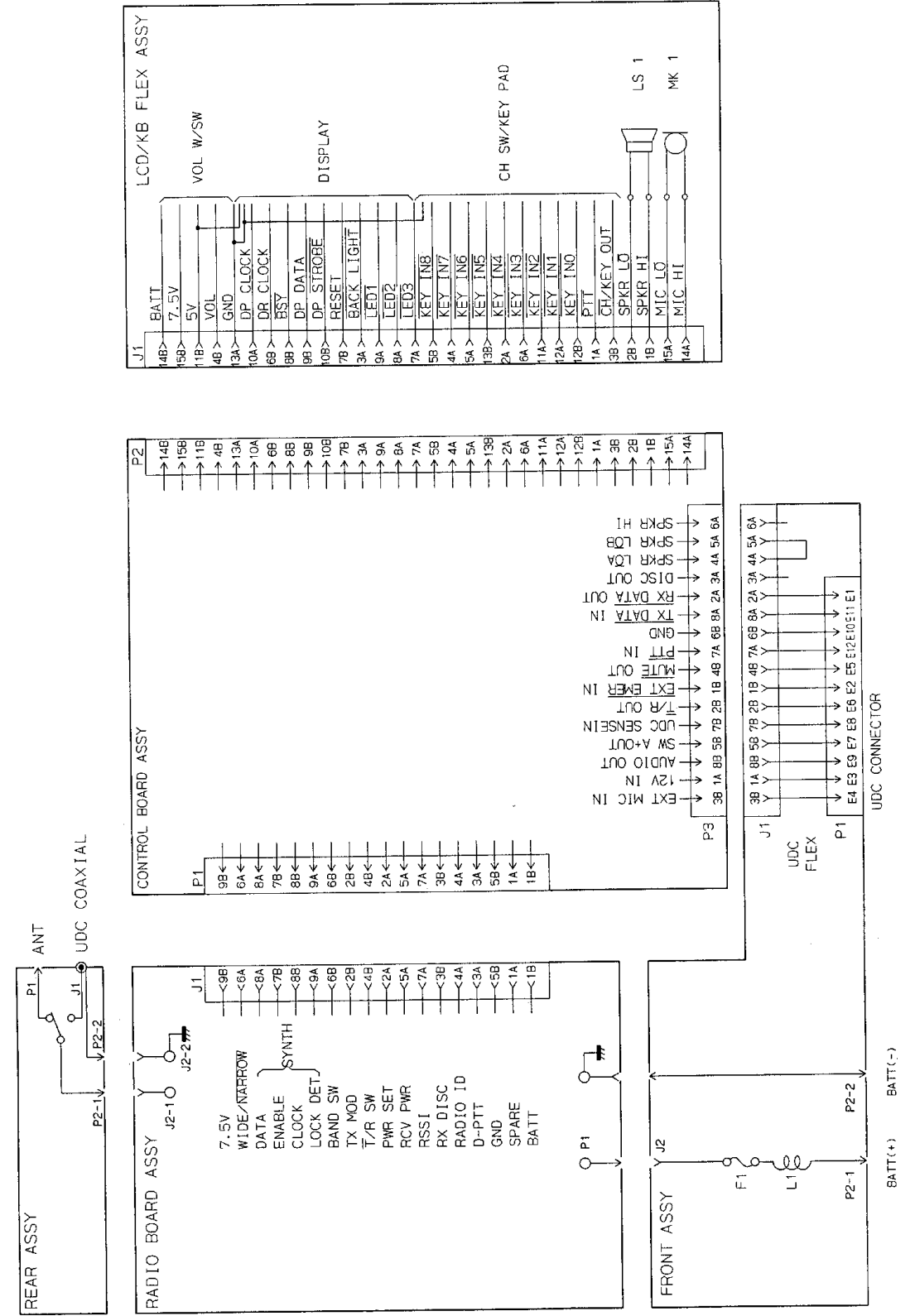
TABLE OF CONTENTS

	<u>Page</u>
INTERCONNECTION DIAGRAM	
M-RK I	1
M-RK II	1
ASSEMBLIES	
M-RK I	2
M-RK I Front Assembly	2
M-RK I LED Flex Assembly	3
M-RK I/II Rear Assembly	3
M-RK I/II Radio PA Assembly	4
M-RK II	4
M-RK II Front Assembly	5
M-RK II LCD/KB Flex Assembly	5
OUTLINE DIAGRAM	
Control Board	6
M-RK I LED Flex Assembly	7
M-RK II LCD/KB Flex Assembly	8
Radio Board (VHF/UHF)	9
Radio Board (800/900 MHz)	10
SCHEMATIC DIAGRAM	
M-RK I LED Flex Assembly	11
Control Board	12
M-RK II LCD/KB Flex Assembly	14
Radio Board (VHF)	15
Radio Board (UHF)	16
Radio Board (800 MHz)	17
Radio Board (900 MHz)	18



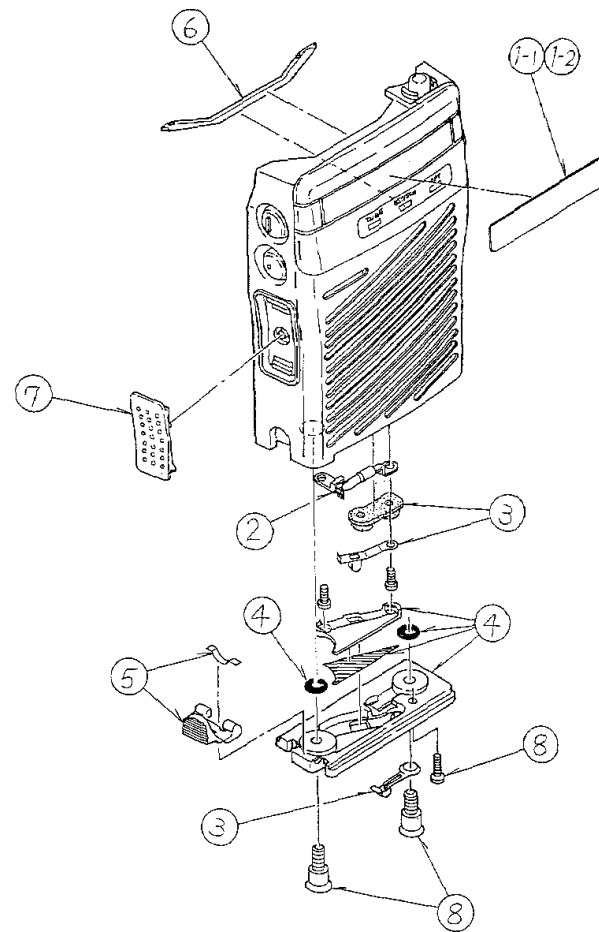
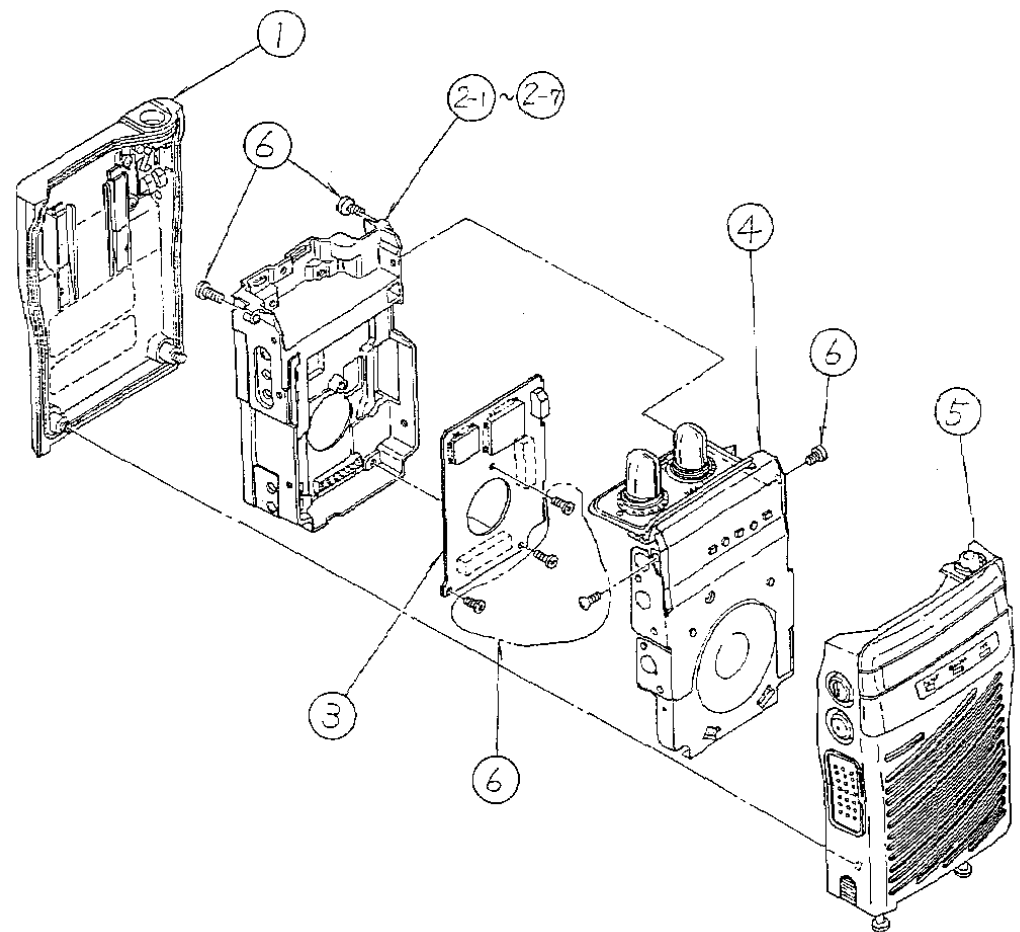
M-RK I

(A3WE05452, Rev. 2)



M-RK II

(A3WE05453, Rev. 2)



Symbol	Parts Number*	Description
1	AS0000032	REAR ASSY
2-1	AS0000115	RADIO BOARD ASSY 135 - 160 MHz
2-2	AS0000123	RADIO BOARD ASSY 150 - 174 MHz
2-3	AS0000131	RADIO BOARD ASSY 403 - 430 MHz
2-4	AS0000149	RADIO BOARD ASSY 440 - 470 MHz
2-5	AS0000156	RADIO BOARD ASSY 470 - 500 MHz
2-6	AS0000154	RADIO BOARD ASSY 806 - 869 MHz
2-7	AS0000172	RADIO BOARD ASSY 896 - 941 MHz
3	AS0000065	CONTROL BOARD ASSY
4	AS0000040	LED FLEX ASSY (M-RK 1)
5	AS0000016	FRONT ASSY (M-RK 1)
6	AS0000037	PART OF SCREW REPLACEMENT KIT

*Prefix with "K19/" when ordering replacement parts

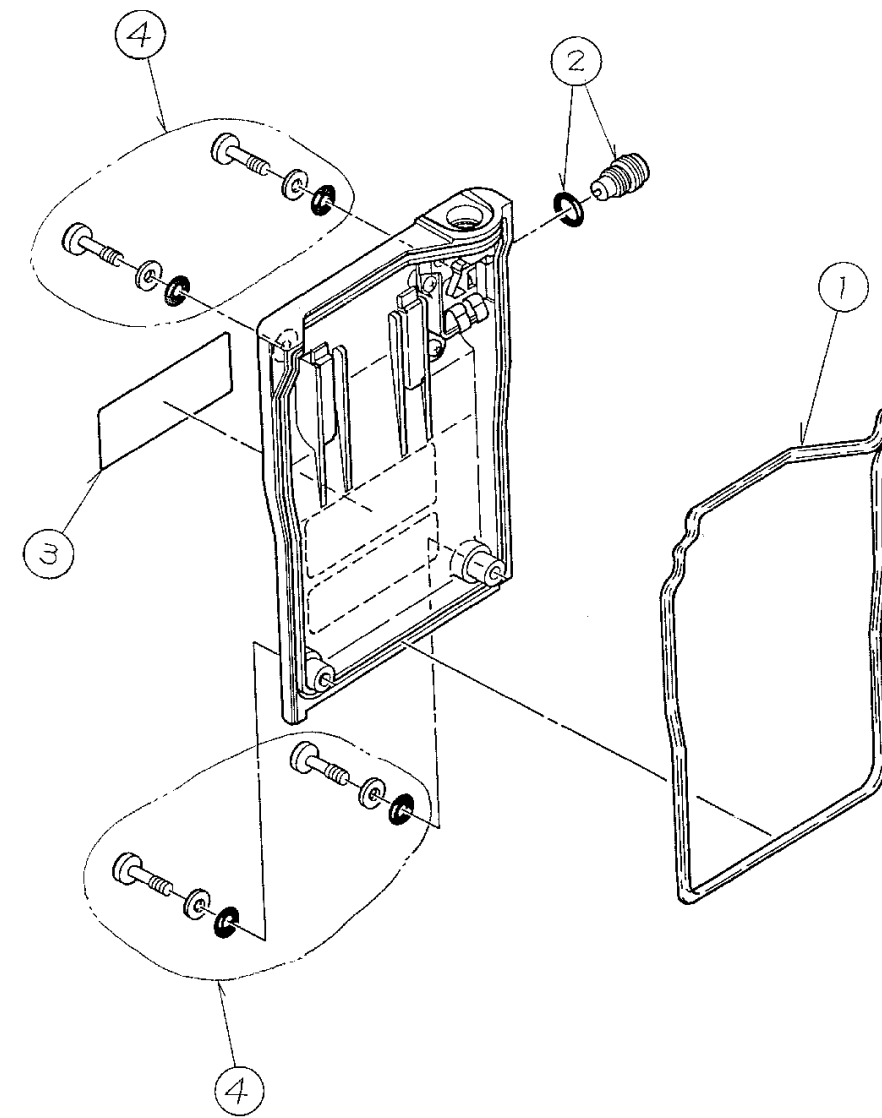
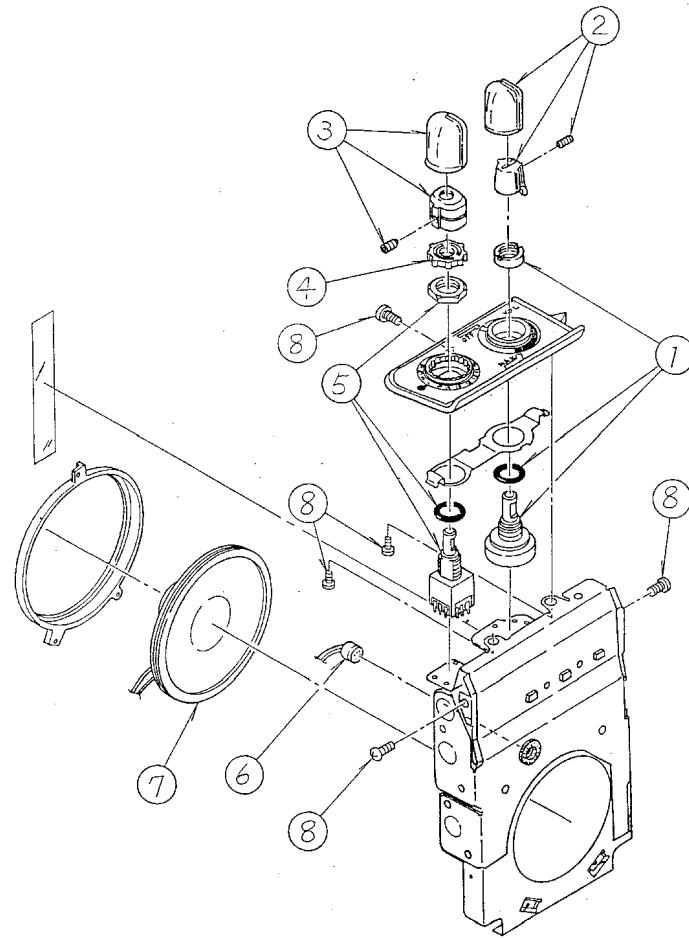
Symbol	Parts Number*	Description
1-1	3F08004709	NAMEPLATE LABEL A (M-RK 1) (GE)
1-2	3F08004717	NAMEPLATE LABEL B (M-RK 1) (ERICSON)
2	2DDB010183	FUSE BEAD W/LUG A, B
3	AS00000339	BATTERY CONTACTS W/SUPPORT
4	AS00000321	BATTERY BASEPLATE W/INSULATOR/GASKET/TAPE
5	AS00000305	LATCH W/SPRING
6	3FED001838	FRONT GASKET
7	3FZA024554	PTT LEVER
8	AS00000347	PART OF SCREW REPLACEMENT KIT

M-RK I FRONT ASSEMBLY
K19/AS0000016

(A3WL16621, Rev. 1)

M-RK I

(A3WL16623, Rev. 1)



Symbol	Parts Number *	Description
1	2RFA001258	VOL W/NUT/O-RING
2	AS00000297	VOL KNOB W/STOPPER/SCREW
3	AS00000289	CH KNOB W/STOPPER/SCREW
4	3FZA025502	CH SWITCH STOPPER
5	2KHA022166	CH SWITCH W/NUT/O-RING
6	2SAA006133	MICROPHONE
7	2SDA001294	SPEAKER
8	AS00000347	PART OF SCREW REPLACEMENT KIT

*Prefix with "K19/" when ordering replacement parts

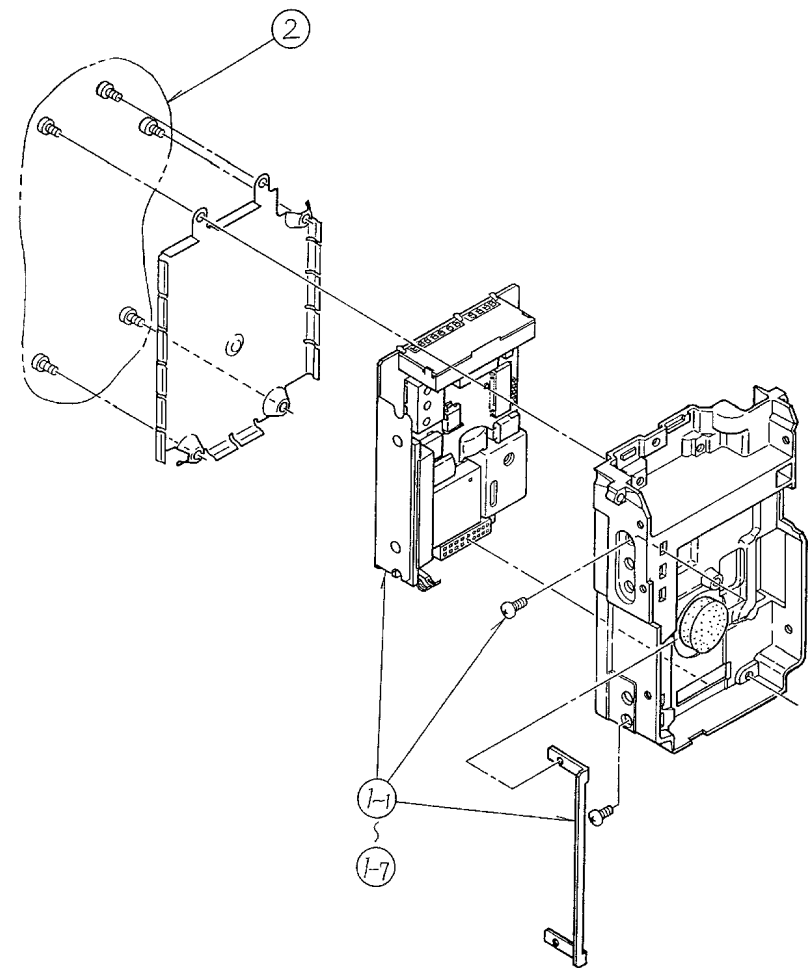
Symbol	Parts Number *	Description
1	3FED001846	REAR O-RING GASKET
2	AS00000206	UDC RF CONNECTOR W/O-RING
3	3FHA033555	BLANK FCC LABEL
4	AS00000347	PART OF SCREW REPLACEMENT KIT

M-RK I LED FLEX ASSEMBLY

(A3WL16622, Rev. 1)

**M-RK I/II
REAR ASSEMBLY**

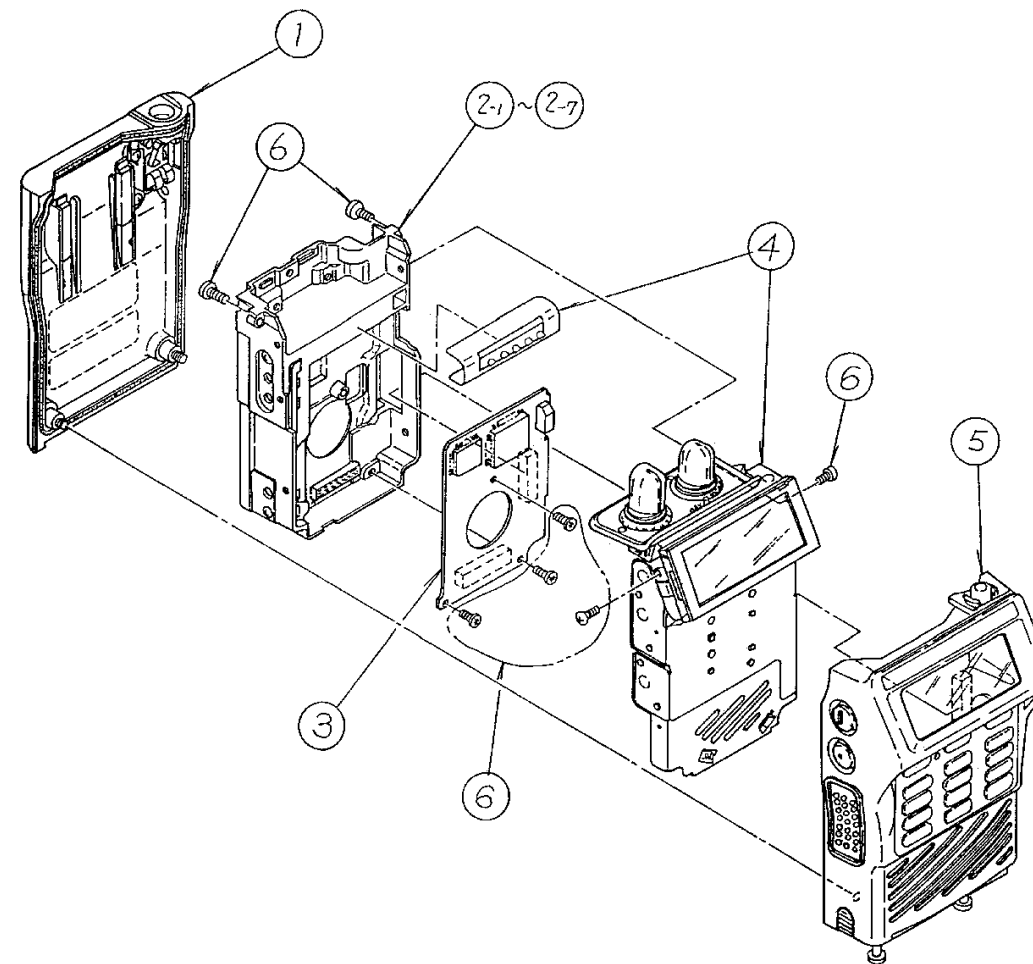
(A3WL16520, Rev. 1)



Symbol	Parts Number*	Description
1-1	AS00000214	PA MODULE (VL) W/RETAINER/SCREWS
1-2	AS00000222	PA MODULE (VH) W/RETAINER/SCREWS
1-3	AS00000230	PA MODULE (UL) W/RETAINER/SCREWS
1-4	AS00000248	PA MODULE (UM) W/RETAINER/SCREWS
1-5	AS00000255	PA MODULE (UH) W/RETAINER/SCREWS
1-6	AS00000263	PA MODULE (800) W/RETAINER/SCREWS
1-7	AS00000271	PA MODULE (900) W/RETAINER/SCREWS
2	AS00000347	PART OF SCREW REPLACEMENT KIT

**M-RK I/II
PA ASSEMBLY**

(A3WL16521, Rev. 1)

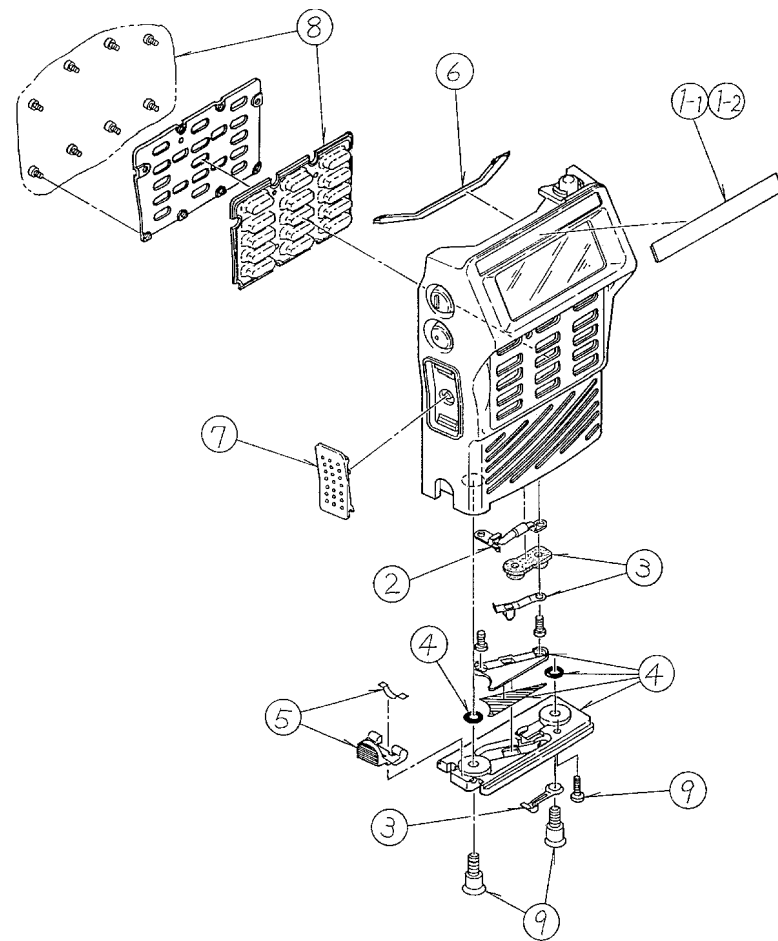


Symbol	Parts Number*	Description
1	AS00000032	REAR ASSY
2-1	AS00000115	RADIO BOARD ASSY 136 - 160 MHz
2-2	AS00000123	RADIO BOARD ASSY 150 - 174 MHz
2-3	AS00000131	RADIO BOARD ASSY 403 - 430 MHz
2-4	AS00000149	RADIO BOARD ASSY 440 - 470 MHz
2-5	AS00000156	RADIO BOARD ASSY 470 - 500 MHz
2-6	AS00000164	RADIO BOARD ASSY 806 - 869 MHz
2-7	AS00000172	RADIO BOARD ASSY 896 - 941 MHz
3	AS00000065	CONTROL BOARD ASSY
4	AS00000057	LCD/KB FLEX ASSY (M-RK II)
5	AS00000024	FRONT ASSY (M-RK II)
6	AS00000347	PART OF SCREW REPLACEMENT KIT

M-RK II

(A3WL16550, Rev. 1)

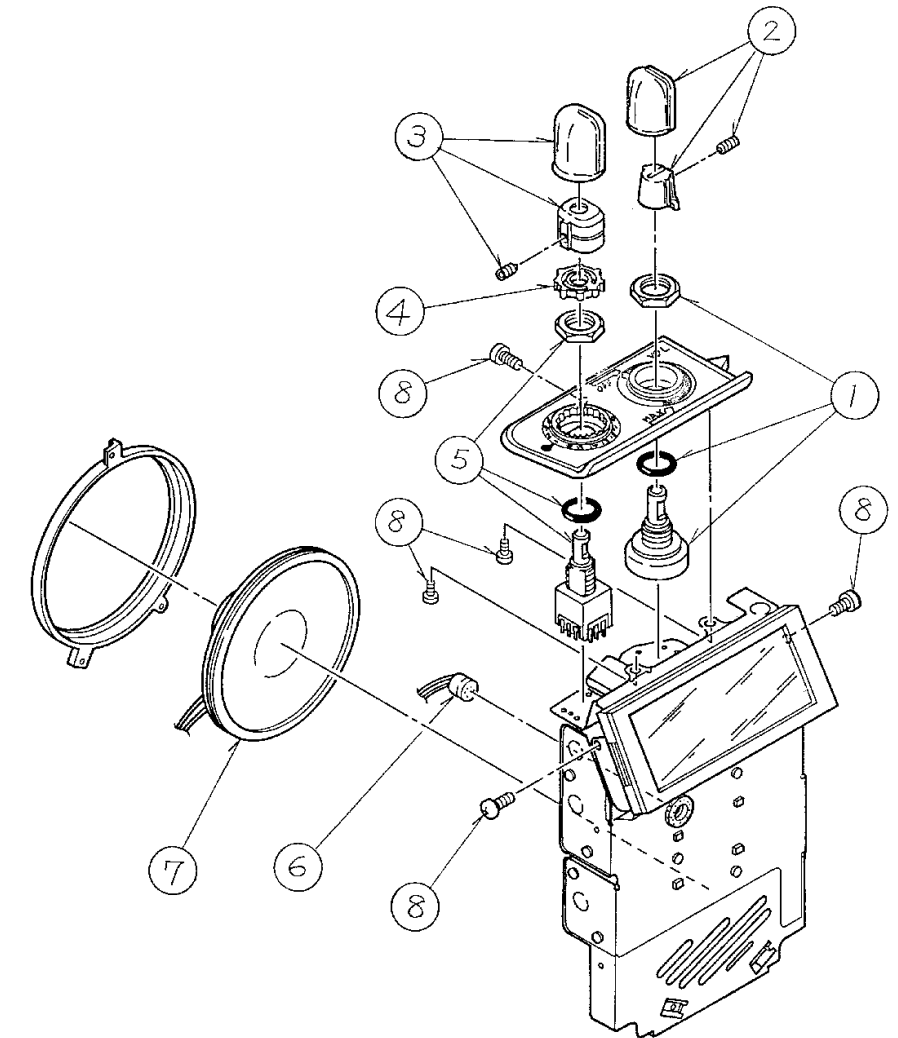
*Prefix with "K19/" when ordering replacement parts



Symbol	Parts Number*	Description
1-1	3FHA030510	NAMEPLATE LABEL A (M-RK II)(GE)
1-2	3FHA033563	NAMEPLATE LABEL B (M-RK II)(ERICSON)
2	200B010183	FUSE, BEAD W/LUG A, B
3	AS00000339	BATTERY CONTACTS W/SUPPORT
4	AS00000321	BATTERY BASEPLATE W/INSULATOR/GASKET/TAPE
5	AS00000305	LATCH W/SPRING
6	3FED001838	FRONT GASKET
7	3FZA024554	PTT LEVER
8	AS00000313	KEYPAD W/SCREWS
9	AS00000347	PART OF SCREW REPLACEMENT KIT

M-RK II FRONT ASSEMBLY
K19/AS00000024

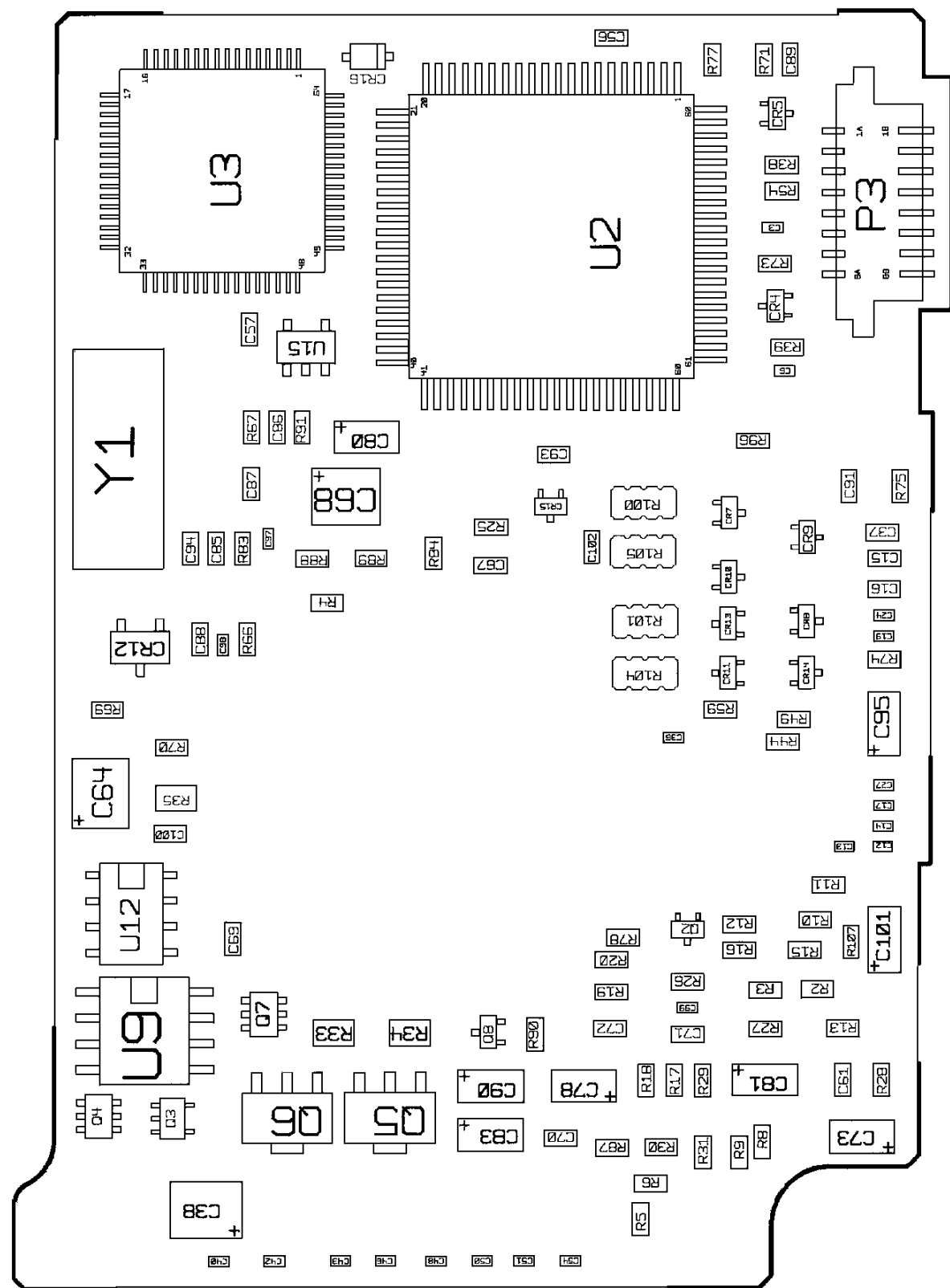
(A3WL16523, Rev. 1)



Symbol	Parts Number*	Description
1	2RFA001258	VOL W/NUT/O-RING
2	AS00000297	VOL KNOB W/STOPPER/SCREW
3	AS00000289	CH KNOB W/STOPPER/SCREW
4	3FZA025502	CH SWITCH STOPPER
5	2KHA022166	CH SWITCH W/NUT/O-RING
6	2SAA006133	MICROPHONE
7	2SDA001294	SPEAKER
8	AS00000347	PART OF SCREW REPLACEMENT KIT

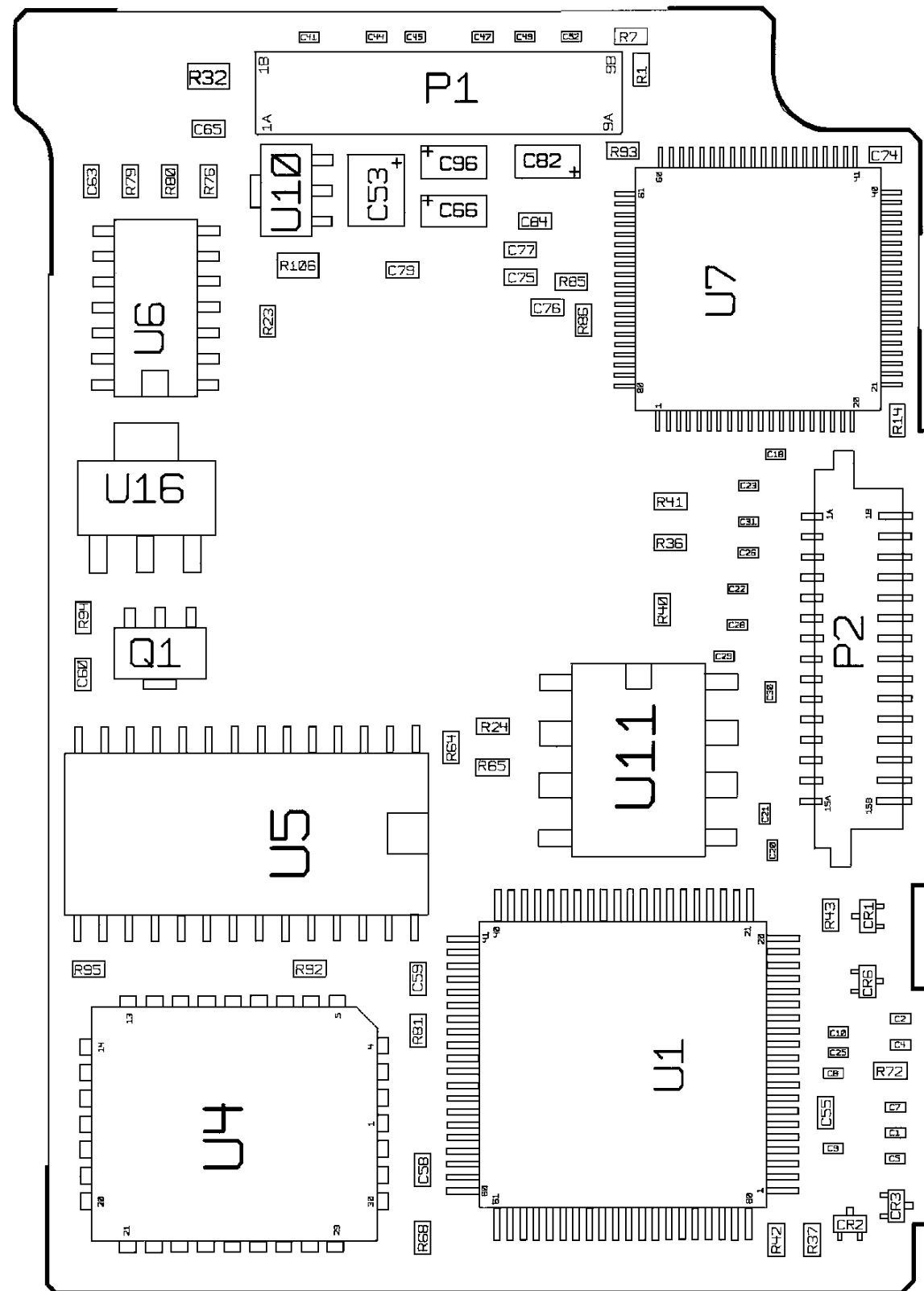
**M-RK II
LCD/KB FLEX ASSEMBLY**
K19/AS00000057

(A3WL16522, Rev. 0)



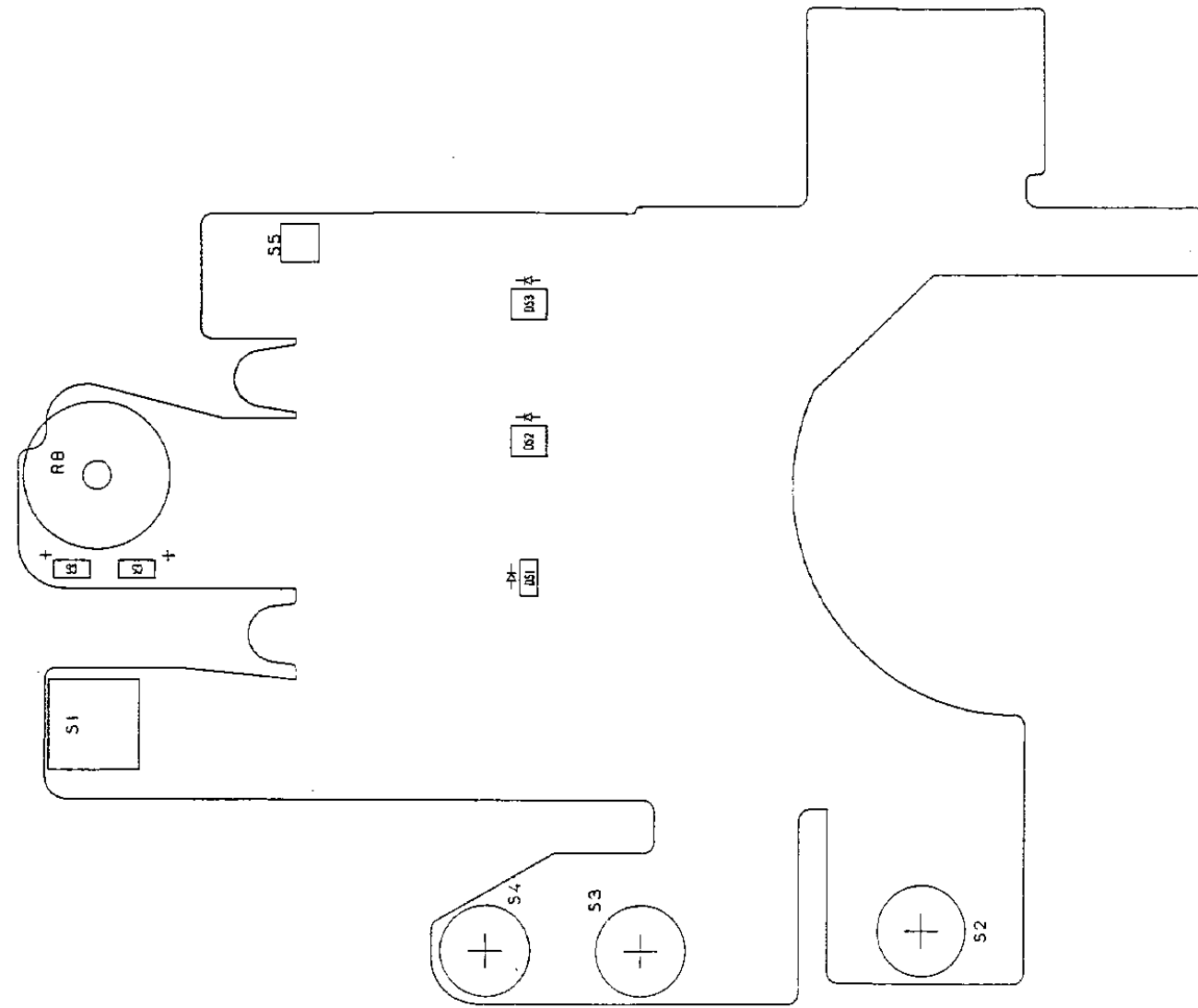
CONTROL BOARD
K19/AS00000065

(A3WE05329, Sh. 1, Rev. 9)



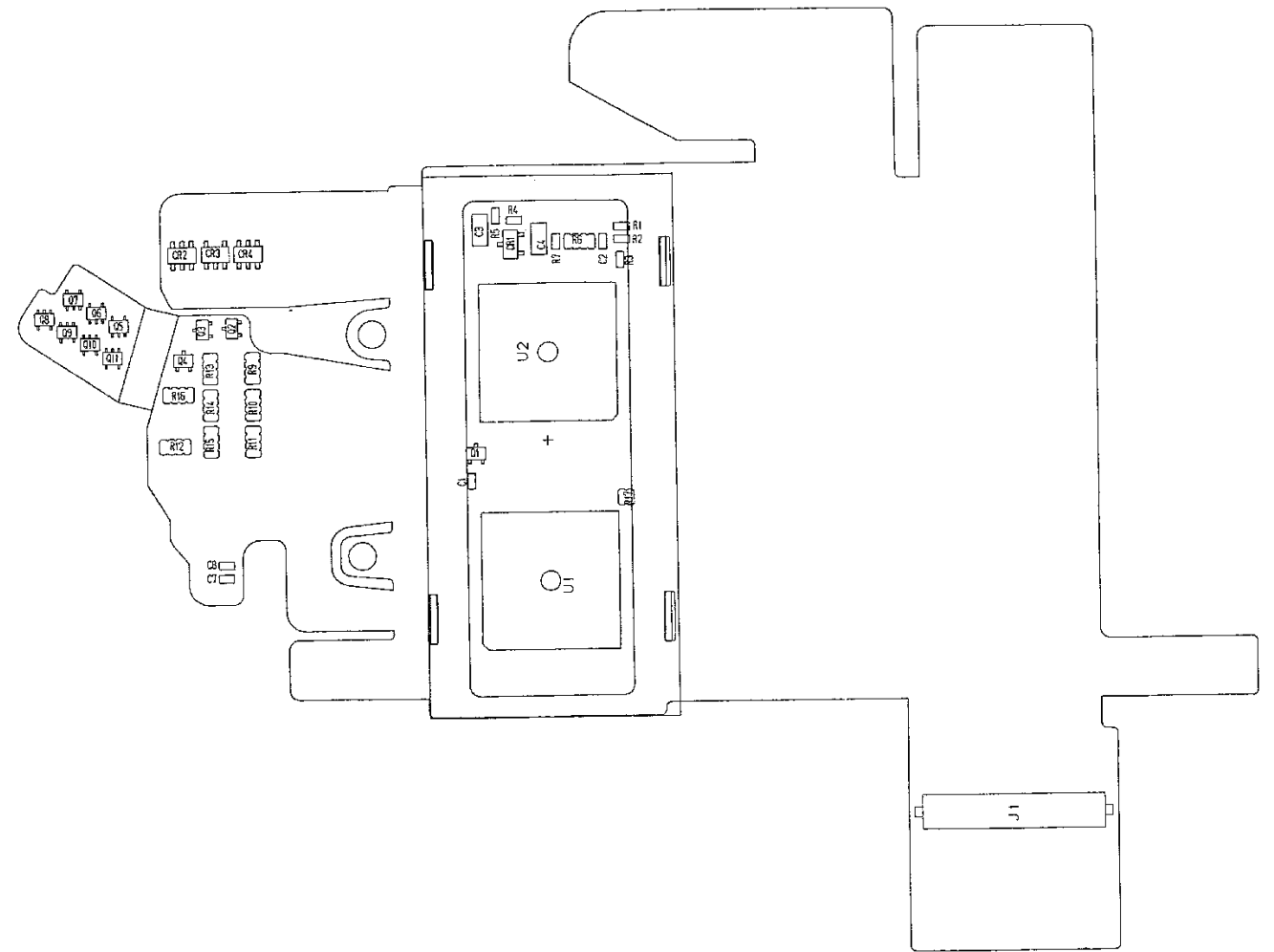
CONTROL BOARD
K19/AS00000065

(A3WE05329, Sh. 3, Rev. 9)



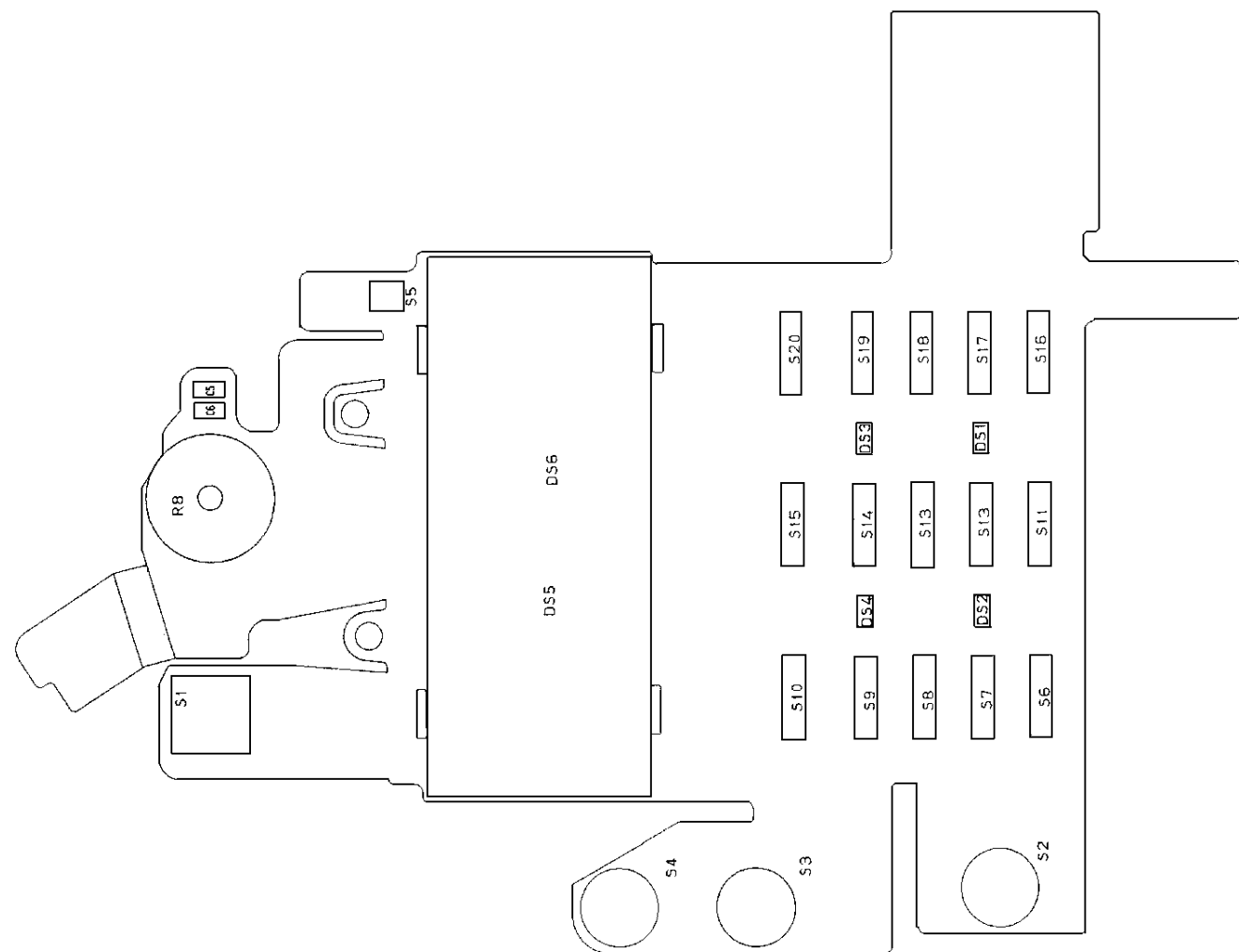
M-RK I LED FLEX ASSEMBLY (SIDE A)
K19/AS00000040

(A2WE05332, Sh. 1, Rev. 2)



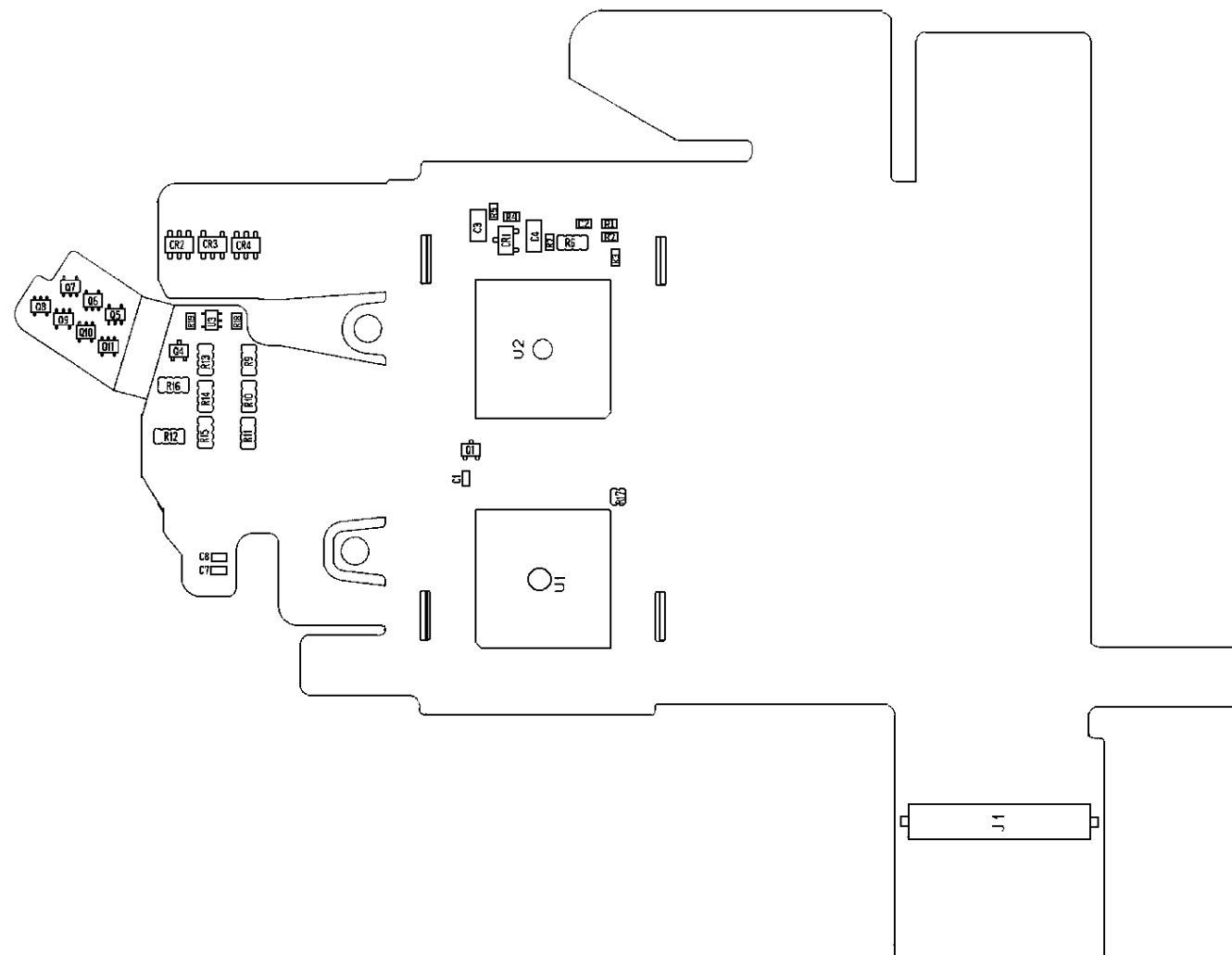
M-RK I LED FLEX ASSEMBLY (SIDE B)
K19/AS00000040

(A2WE05332, Sh. 2, Rev. 2)



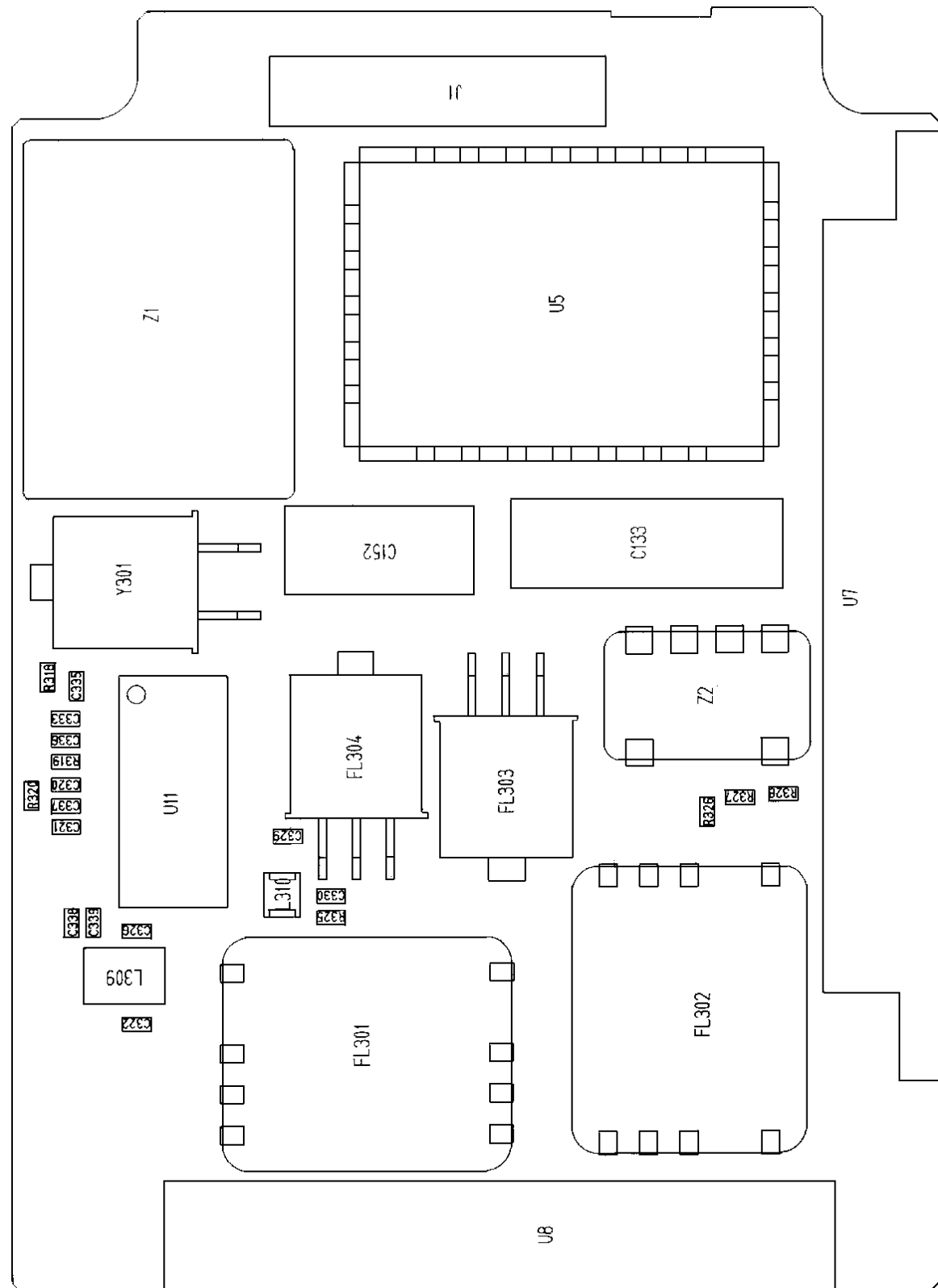
MRK II
LCD/KB FLEX ASSEMBLY
K19/AS00000057

(A2WE05233, Sh. 1, Rev. 7)



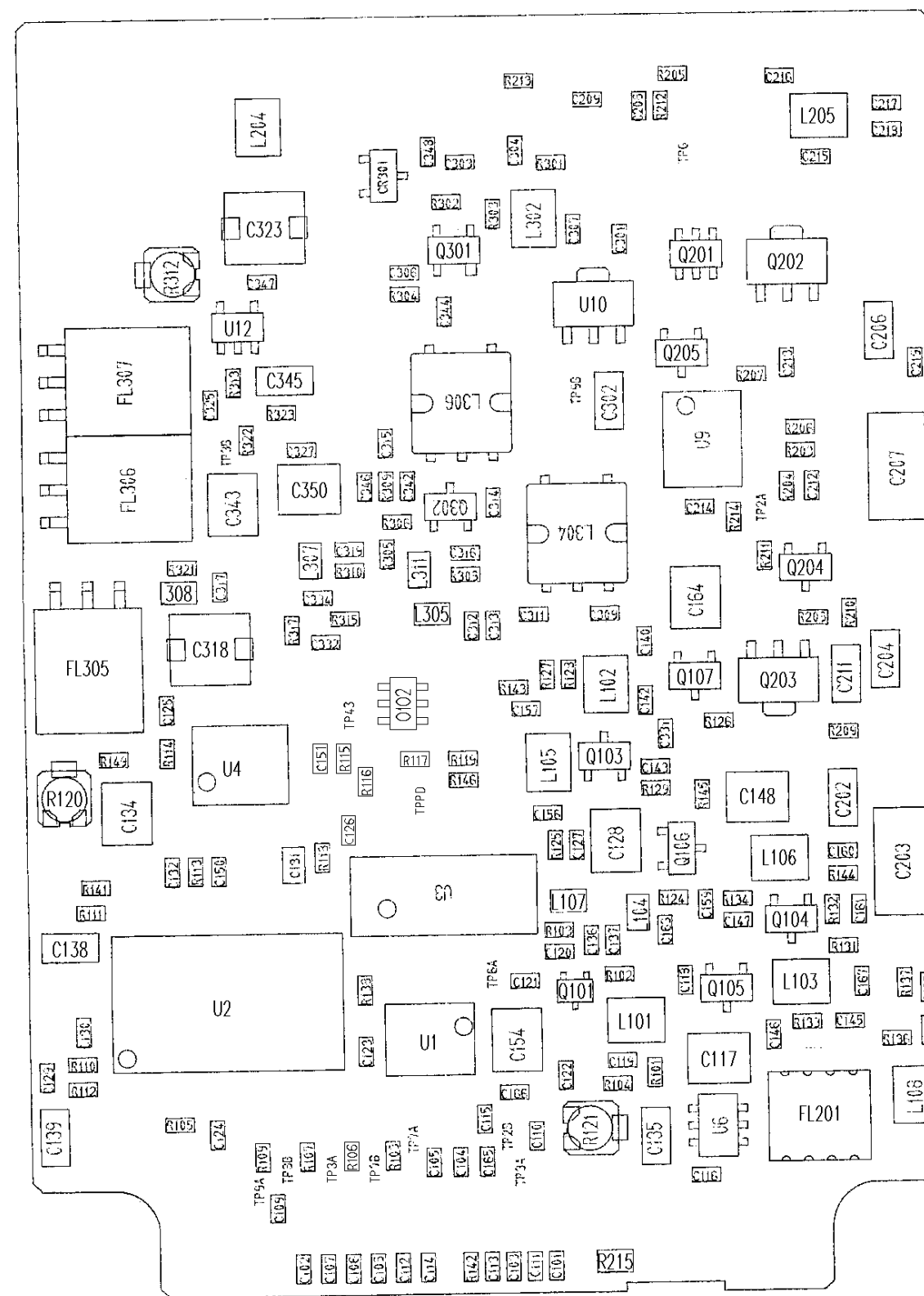
MRK II
LCD/KB FLEX ASSEMBLY
K19/AS00000057

(A2WE05233, Sh. 2, Rev. 7)



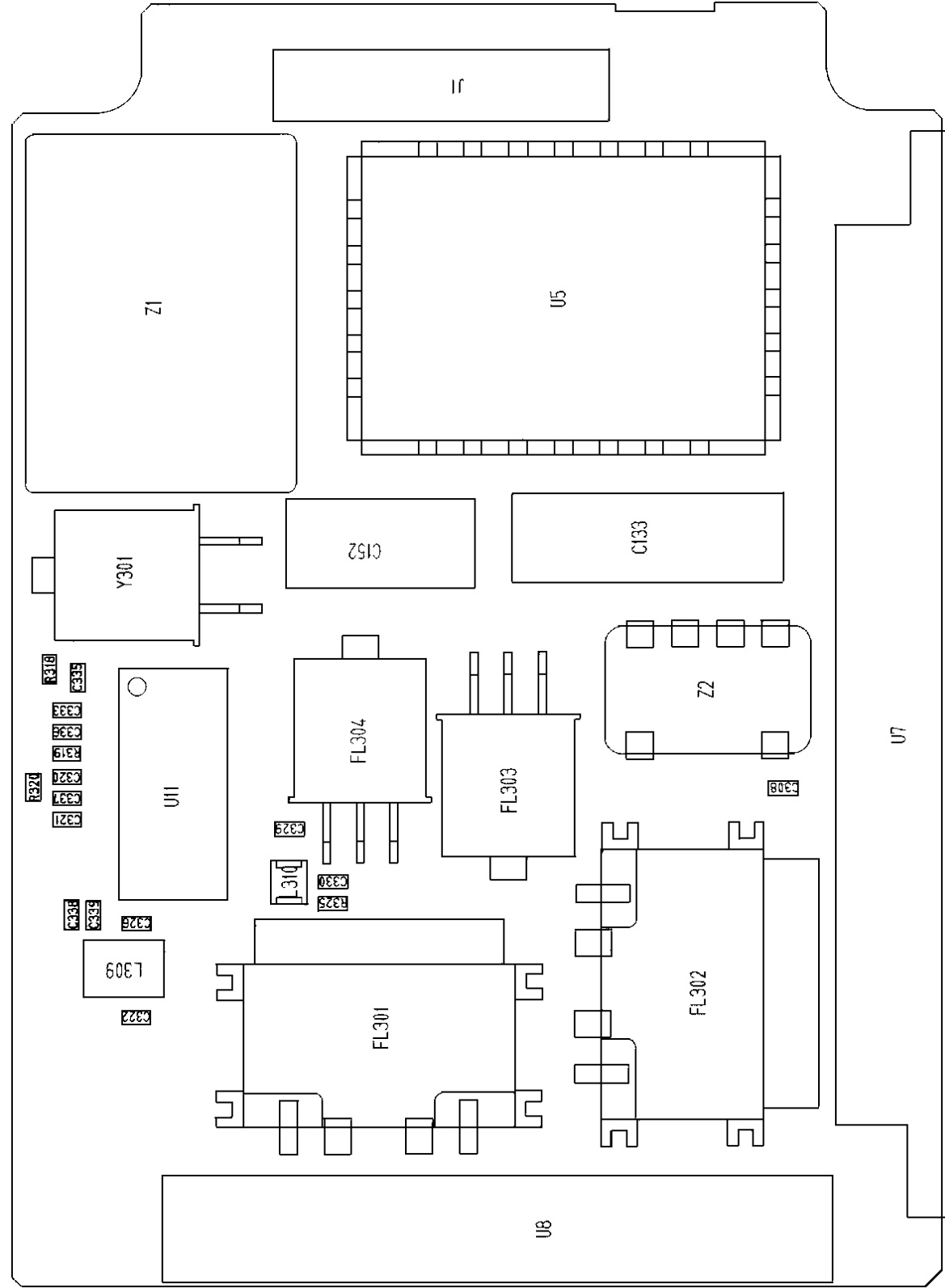
RADIO BOARD
VHF/UHF

(A3WE05419, Sh. 1, Rev. 8)



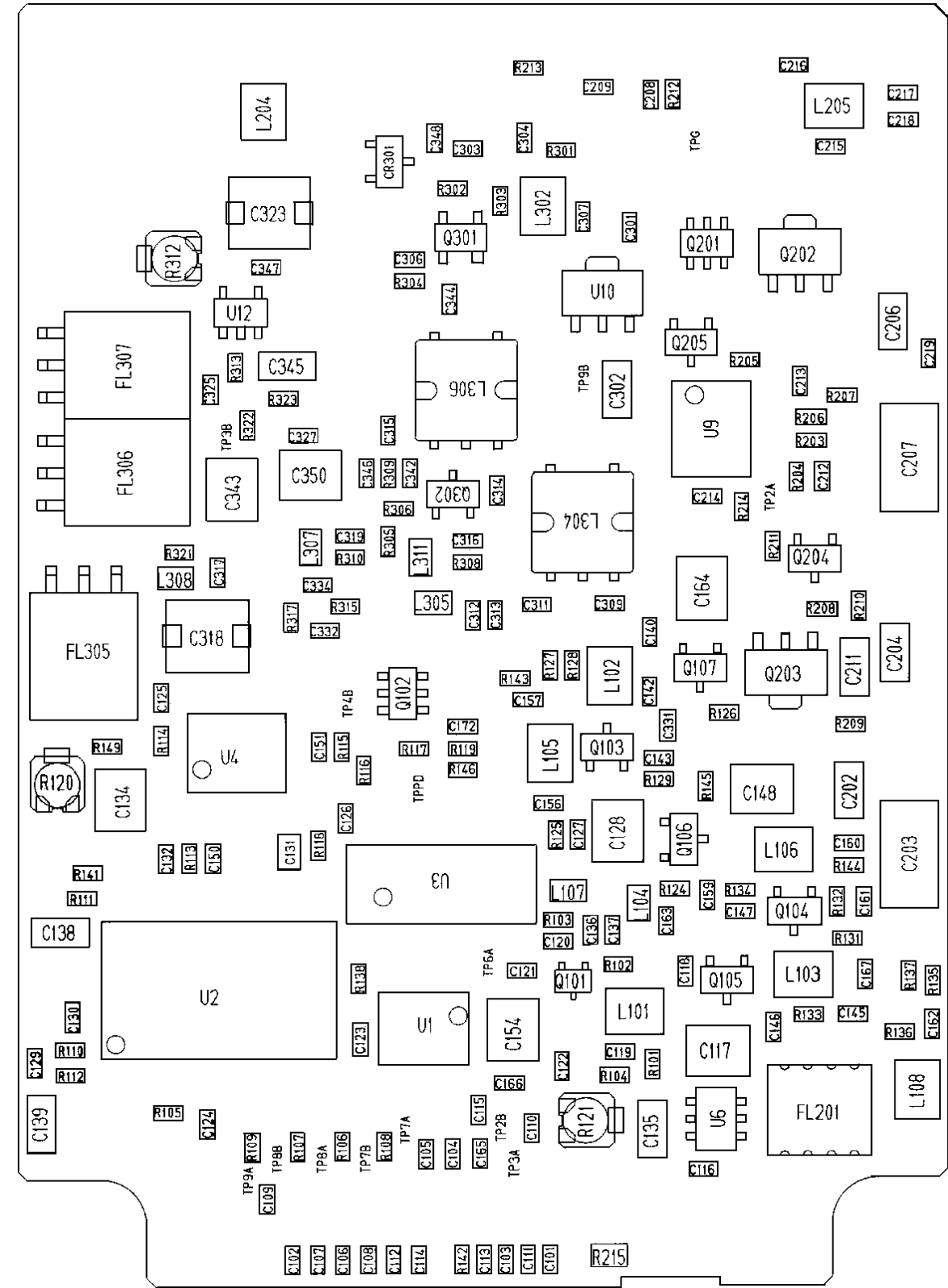
RADIO BOARD
VHF/UHF

(A3WE05419, Sh. 2, Rev. 8)



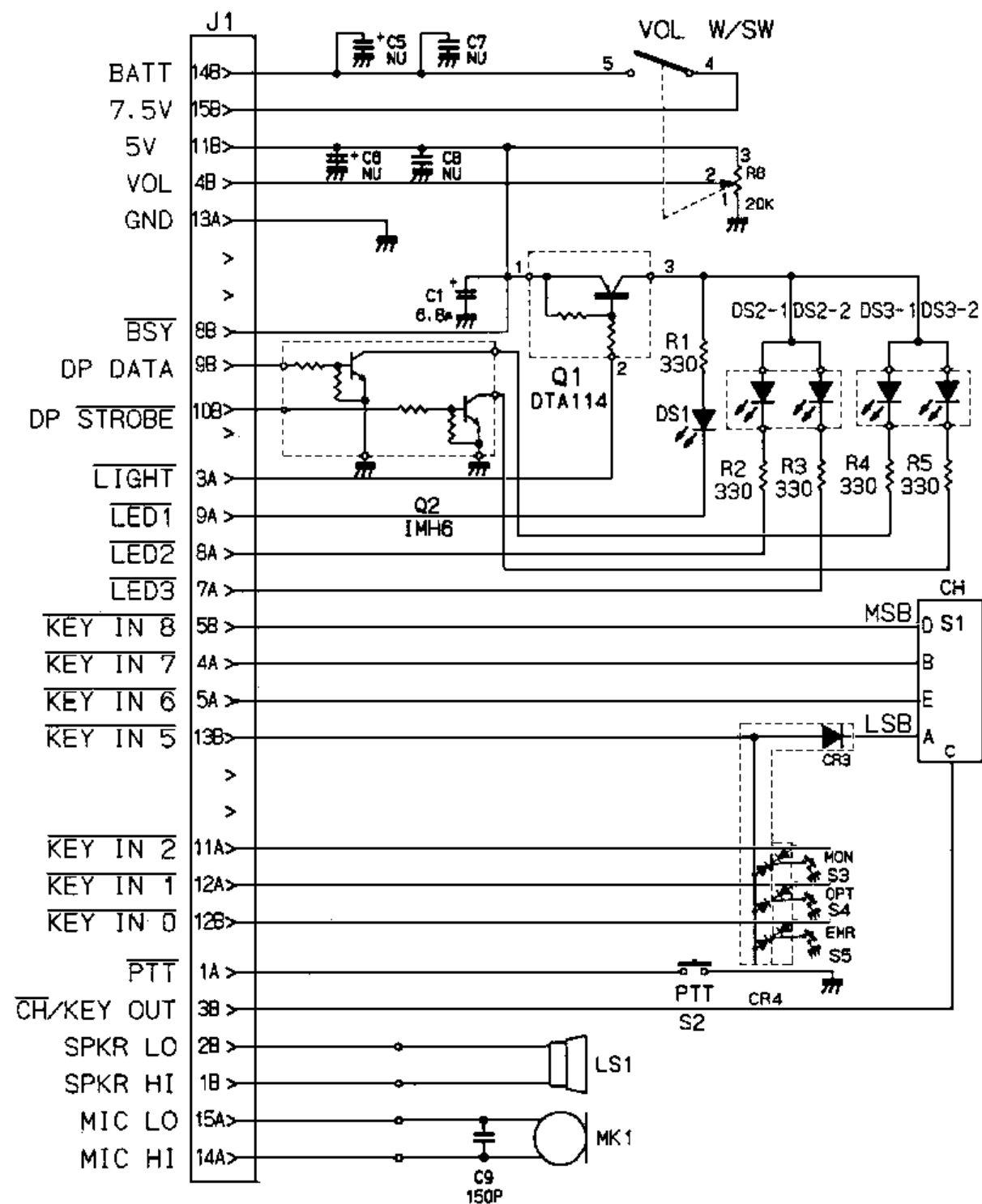
RADIO BOARD (800/900 MHz)
K19/AS00000164

(A3WE05418, Sh. 1, Rev. 10)



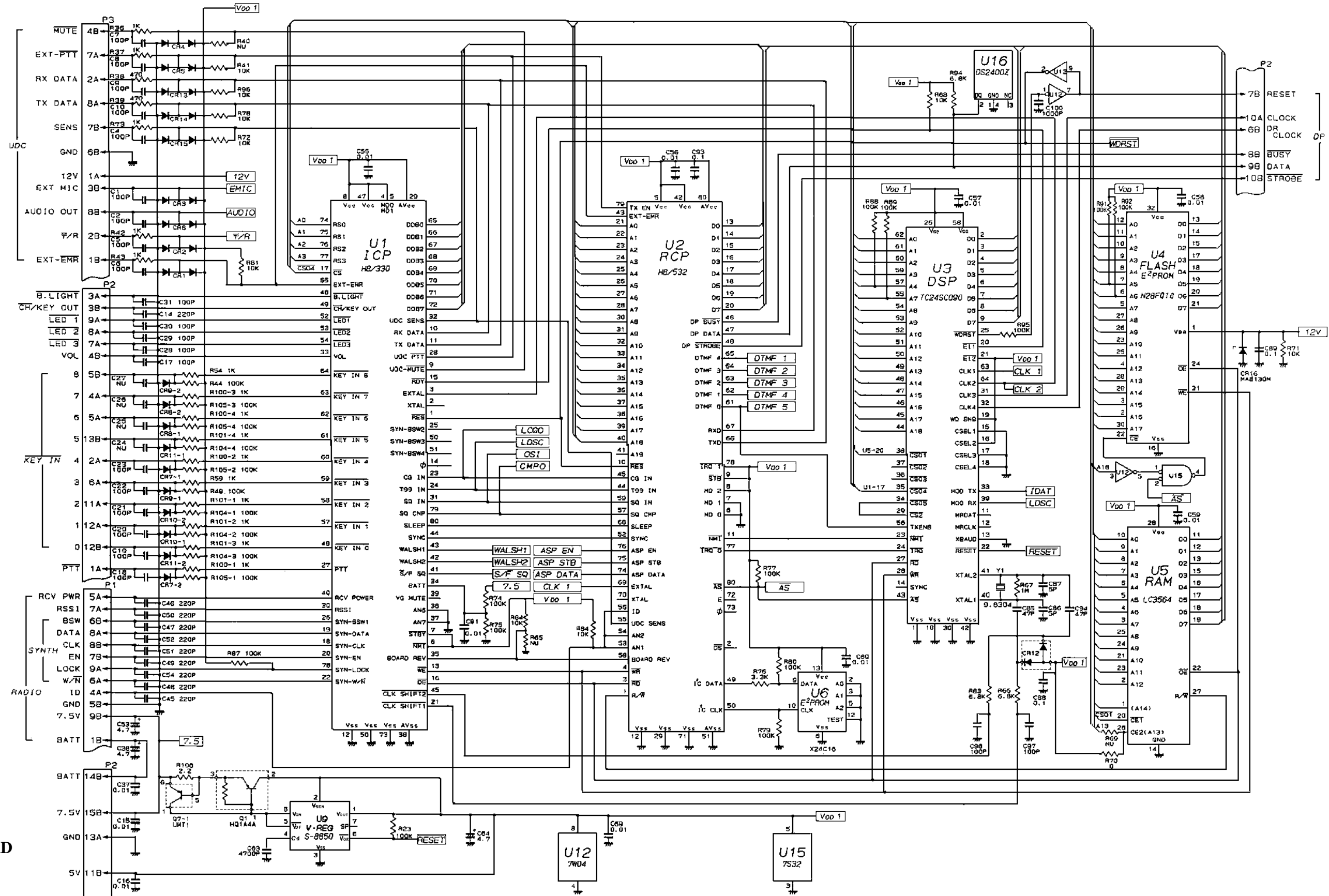
RADIO BOARD (800/900 MHz)
K19/AS00000164

(A3WE05418, Sh. 2, Rev. 10)



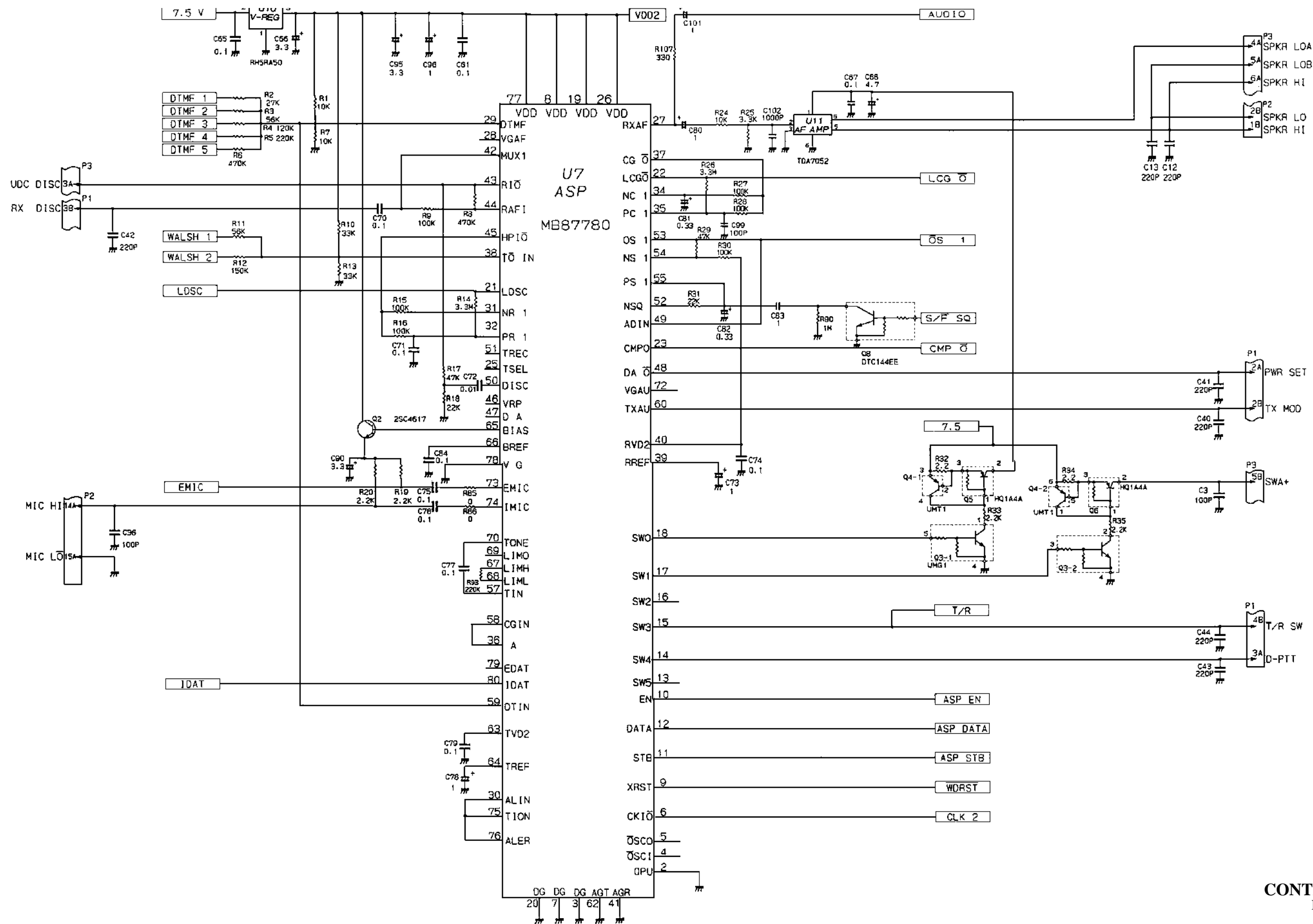
M-RK I LED FLEX ASSEMBLY

(A3WE05285, Rev. 3)



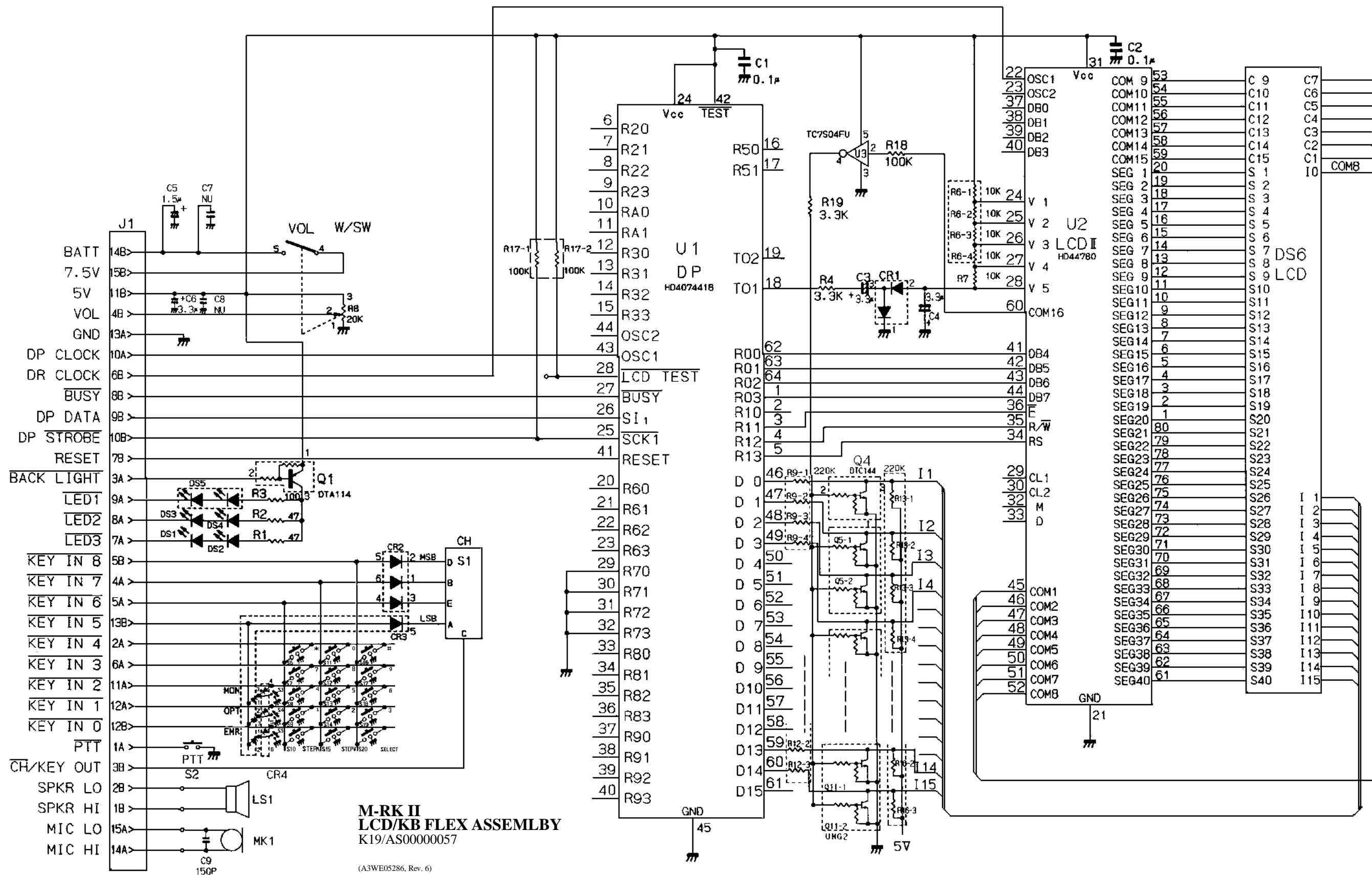
CONTROL BOARD K19/AS00000065

(A2WE05284, Sh. 1, Rev. 6)

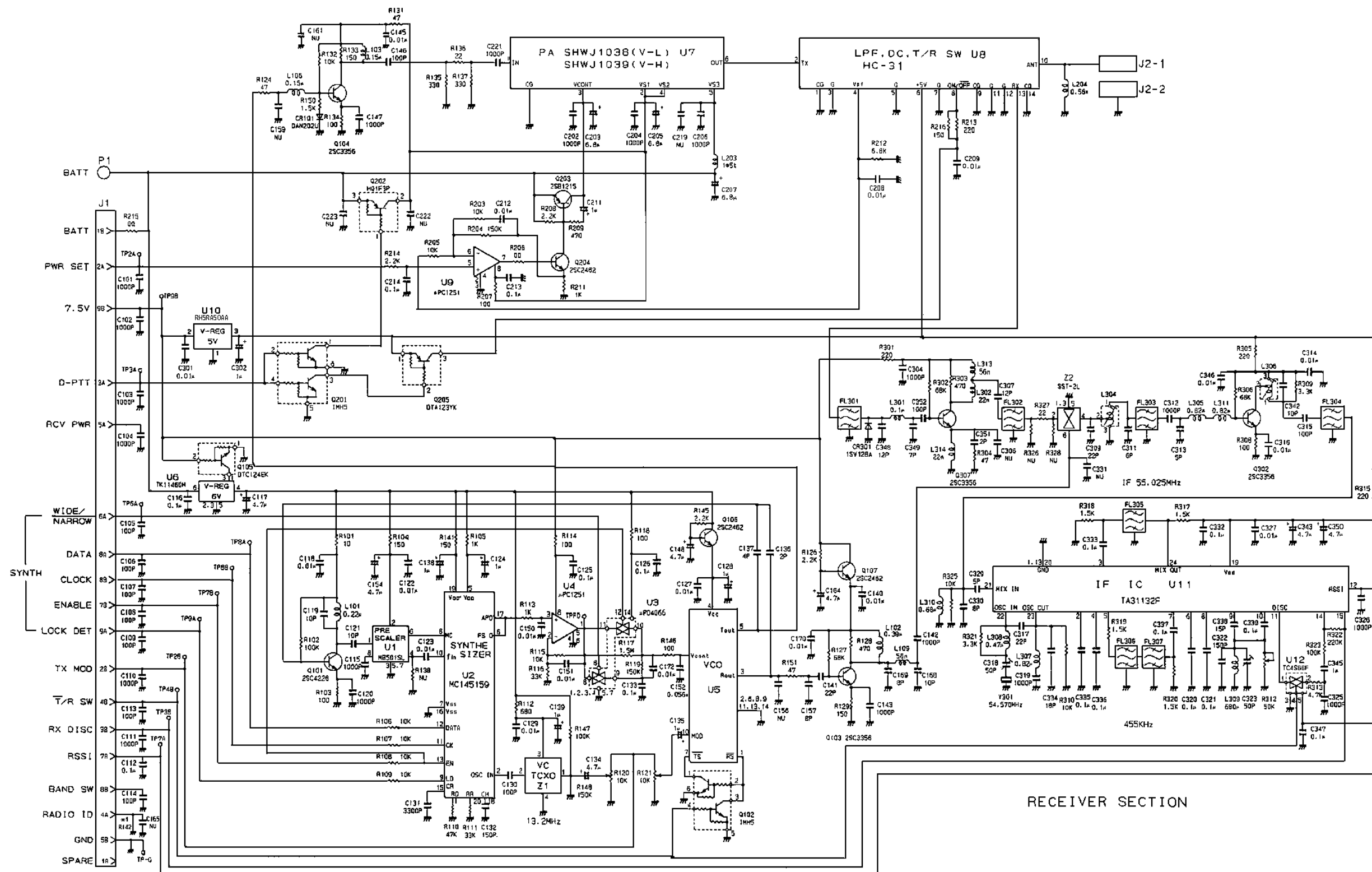


CONTROL BOARD
K19/AS00000065

(A2WE05284, Sh. 2, Rev. 10)



TRANSMITTER SECTION



RECEIVER SECTION

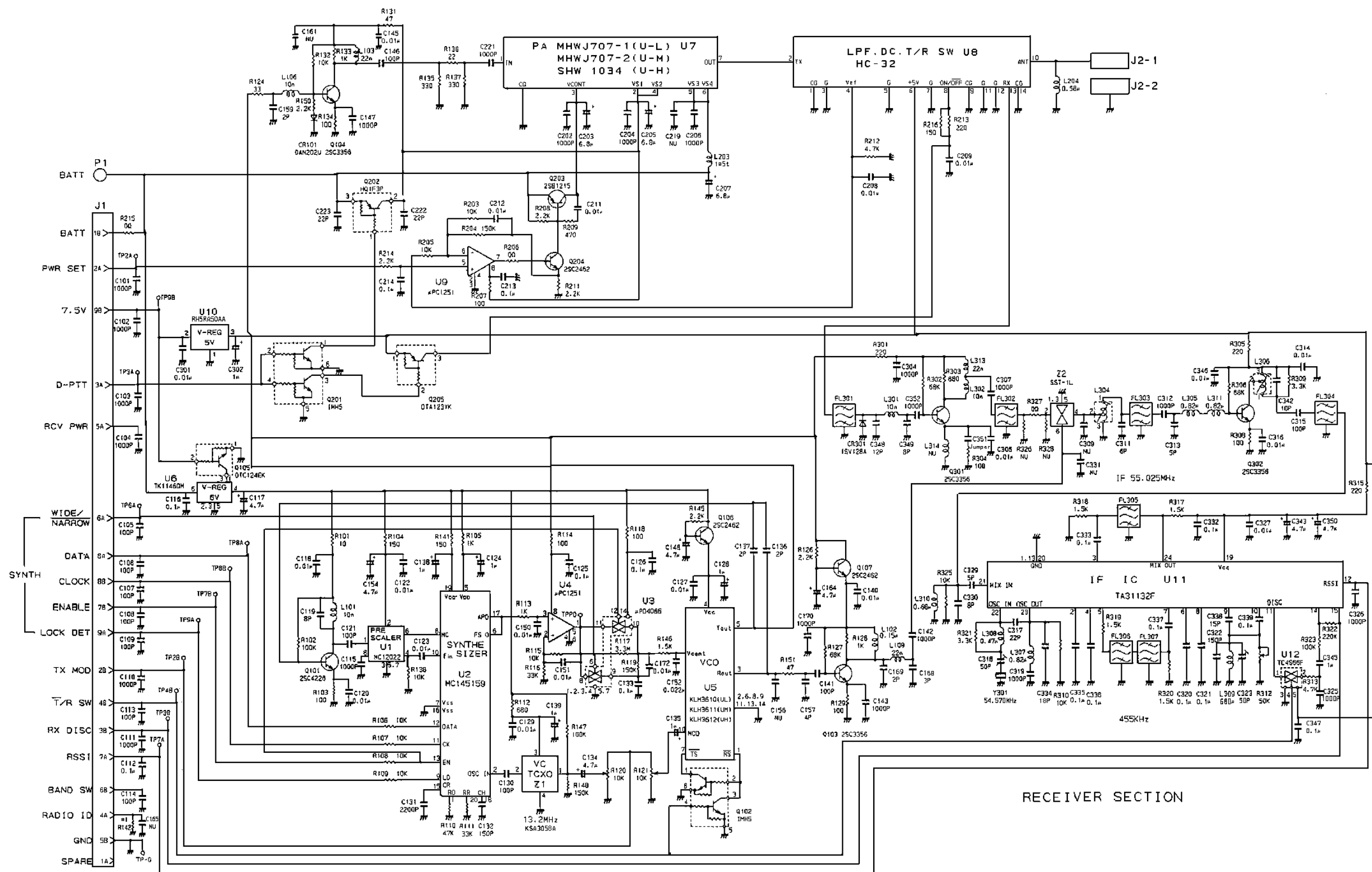
SYNTHESIZER SECTION

	V-L	V-H
#1	2.2K	4.7K
R142	2.2K	4.7K

RADIO BOARD VHF

(A2WE05280, Rev. 7)

TRANSMITTER SECTION

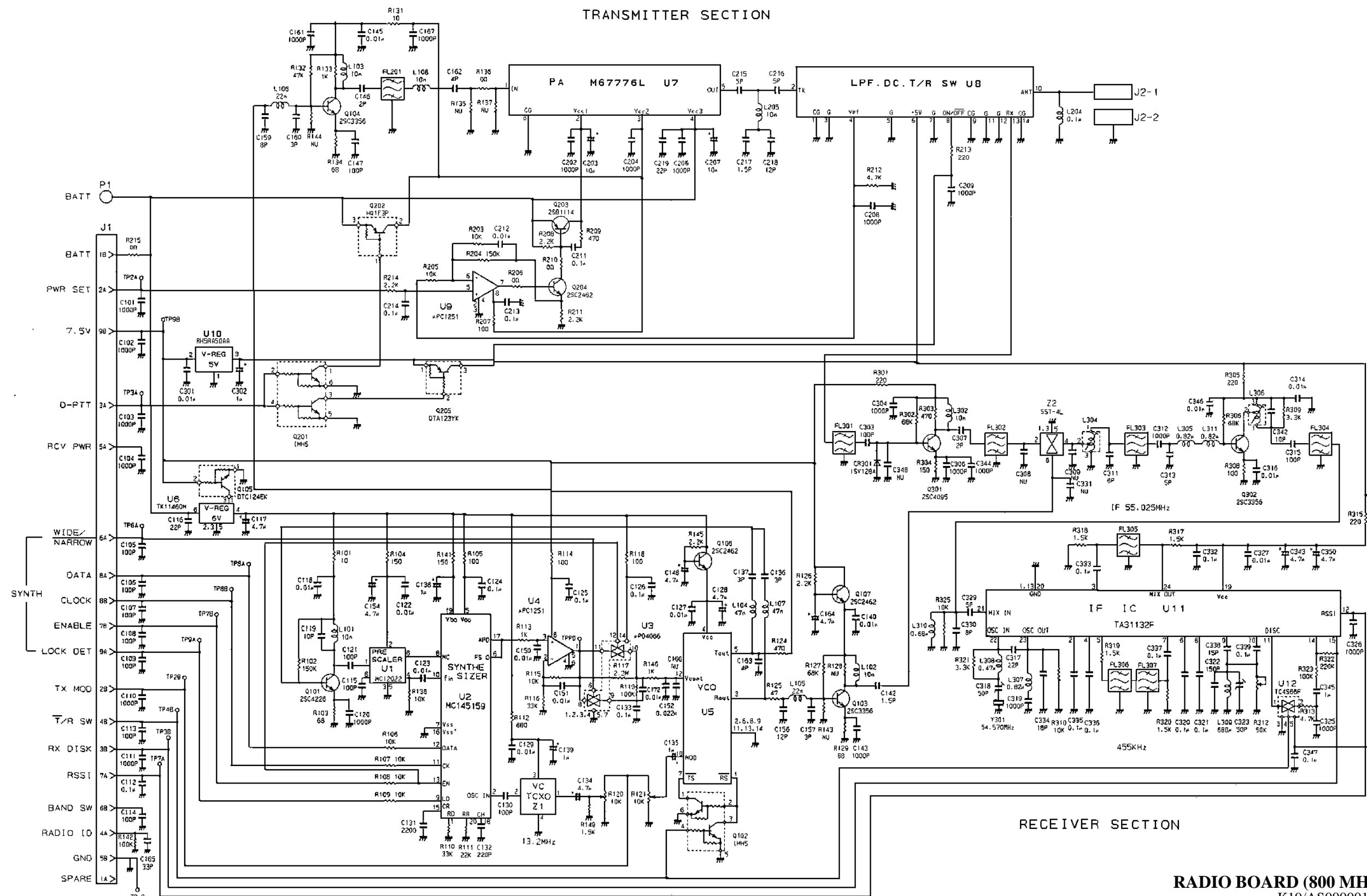


RADIO BOARD UHF

(A2WE05281, Rev. 3)

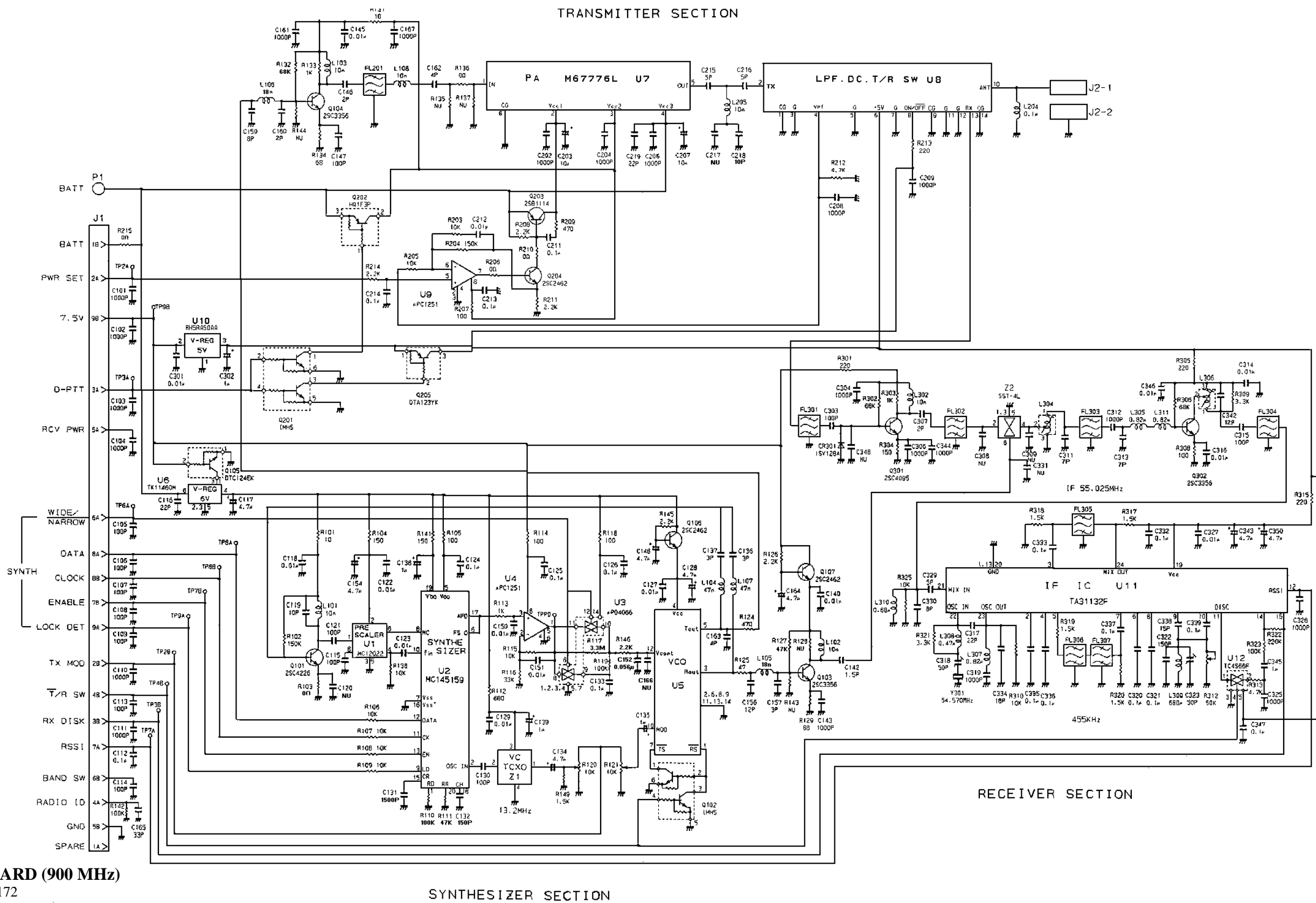
	U-L	U-M	U-H
#1	22K	47K	68K

SYNTHESIZER SECTION



RADIO BOARD (800 MHz)
K19/AS00000164

(A2WE05282, Rev. 10)



RADIO BOARD (900 MHz)

K19/AS00000172

This page intentionally left blank