

**MAINTENANCE MANUAL  
FOR  
INTERCONNECT INTERFACE BOARD  
19C903504G3**

**TABLE OF CONTENTS**

DESCRIPTION.....	1
CIRCUIT ANALYSIS .....	1
PARTS LIST.....	2
OUTLINE DIAGRAM.....	3
CIRCUIT DIAGRAM.....	4

**DESCRIPTION**

The Interconnect Interface Board provides a power connection from the System board to the RF board.

**CIRCUIT DESCRIPTION**

The following signals are transferred between the System board and the RF Board.

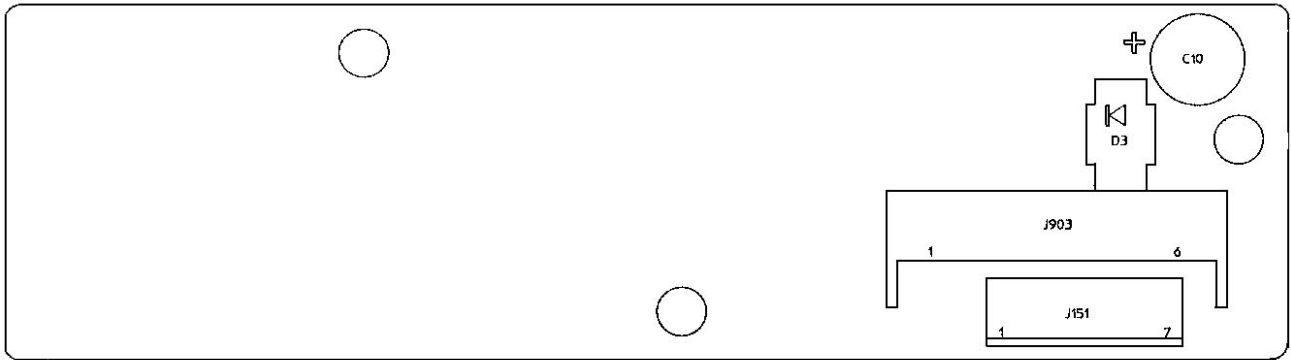
A-, A+

These signals are available at the pins designated in the table below:

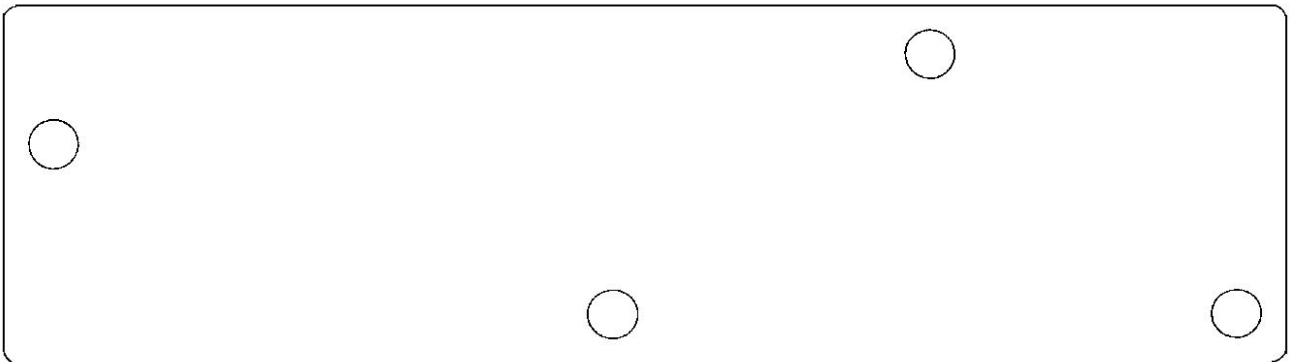
SIGNAL	PLUG	PINS
A-	J903	6
	J151	1,7
A+	J903	1,2,3
	J151	2,3,4

**INTERCONNECT INTERFACE BOARD  
19D903504G3**

<b>SYMBOL</b>	<b>PART NO.</b>	<b>DESCRIPTION</b>
		---- CAPACITORS ----
C10	19A703314P10	Electrolytic: 10 $\mu$ F-10+50%, 50 VDCW; sim to Panasonic LS Series
		----- DIODES -----
D3	19A700082P1	Rectifier, Silicon; sim to MR751
		----- JACKS -----
J51	19A700072P33	Printed Wire: 7 contacts rated @ 2.5 amps; sim to Molex 22-27-2071.
J903	19A705245P1	Printed Wire: 6 contacts, sim to Molex 10-02-1026.

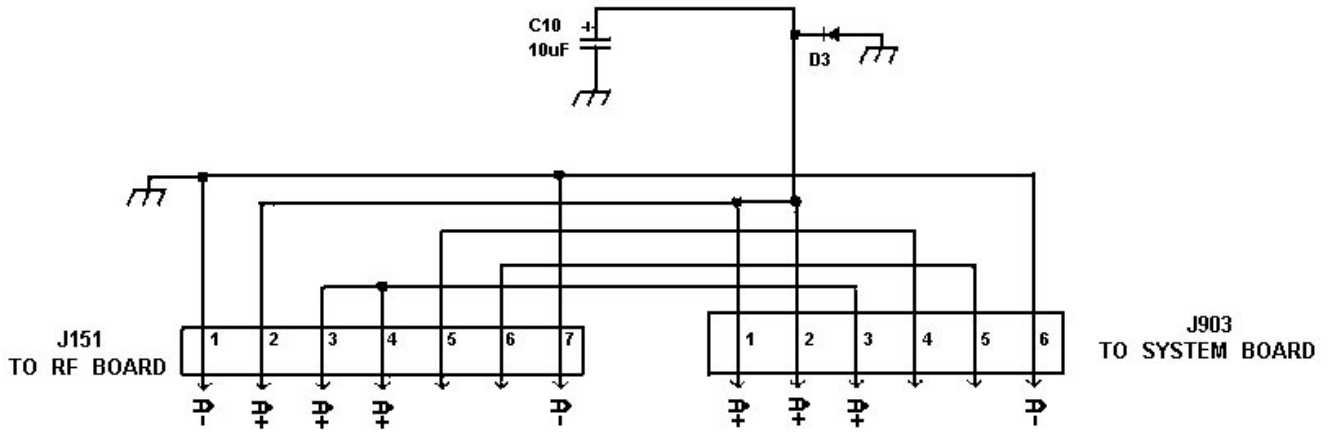


COMPONENT SIDE VIEW



SOLDER SIDE VIEW

**DATA INTERCONNECT INTERFACE  
(19D903504G3- Modified)**



**DATA INTERCONNECT INTERFACE  
(19D903504G3- Modified)**