

INSTALLATION INSTRUCTIONS
FOR
CABINET BLOWER ASSEMBLY 4029917G3
(Option 7718)

Cabinet Blower Assembly 4029917G3 is designed for use in MASTR Progress Line Floor Mount station cabinets. The assembly mounts at the bottom of the cabinet with the fan blades toward the rear of the cabinet. A filter mounts in the rear door, and when the door is closed the filter fits against the blower assembly. Automatic operation of the blower is provided by a thermostat which mounts on the vertical rack support at the top of the station cabinet. The control circuit is wired so that the blower operates when station power is ON and the cabinet temperature reaches approximately 110° Fahrenheit. When the cabinet temperature drops below the threshold of the thermostat (approximately 95° Fahrenheit) the blower turns off.

INSTALLATION

The Cabinet Blower Assembly should be installed according to the instructions provided on Sheets 1 and 2 of Installation Diagrams 19D402882 (attached).

MAINTENANCE

Under average operating conditions, the Air-Maze Corp. Type P-61 filter should be cleaned after every 250 hours of blower operation. Use the following procedure:

1. Slide the filter out of its brackets inside the rear door of the base station.
2. Wash the filter in a warm, mild detergent solution.
3. Rinse and dry the filter.
4. The efficiency of the filter can be increased by coating the filter with water-soluble oil (such as Air-Maze Filterkote K) diluted with equal parts of water.
5. Reinstall the filter.

(DF-9014)

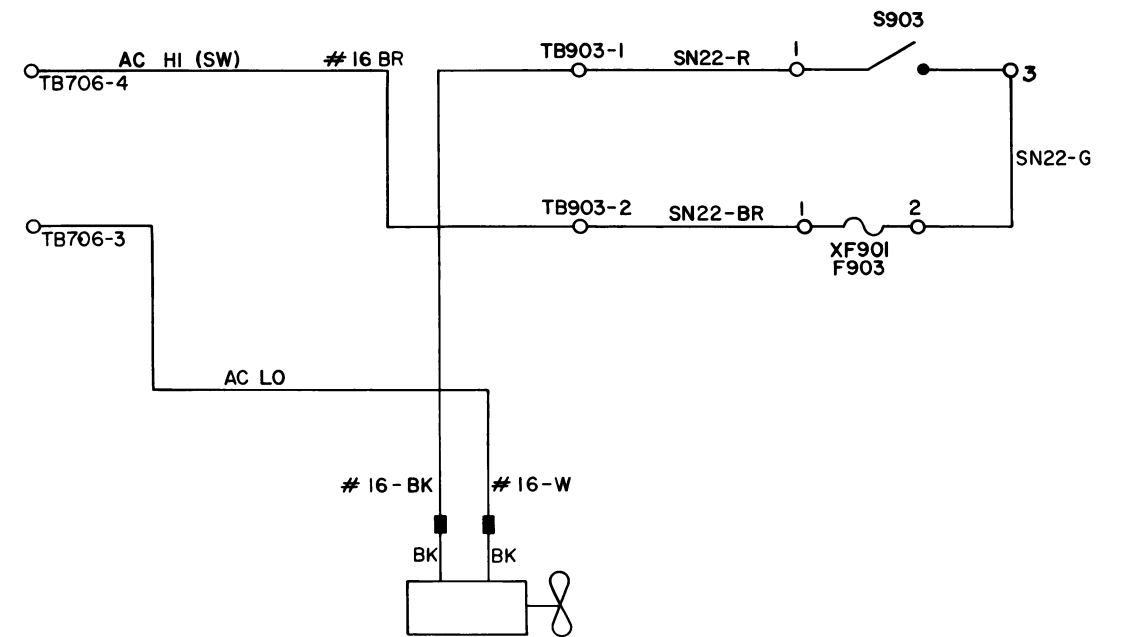
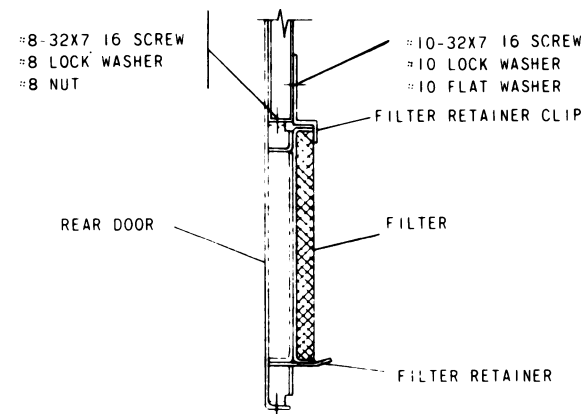
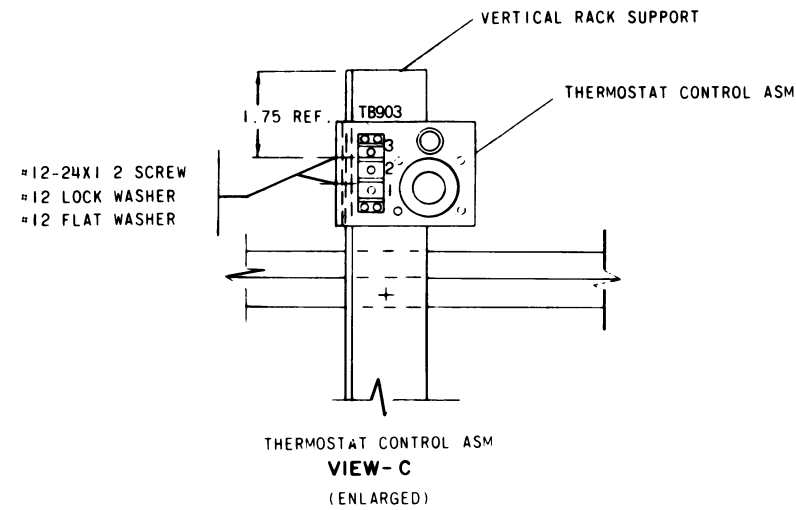
PARTS LIST

BLOWER ASSEMBLY
4029917-G3

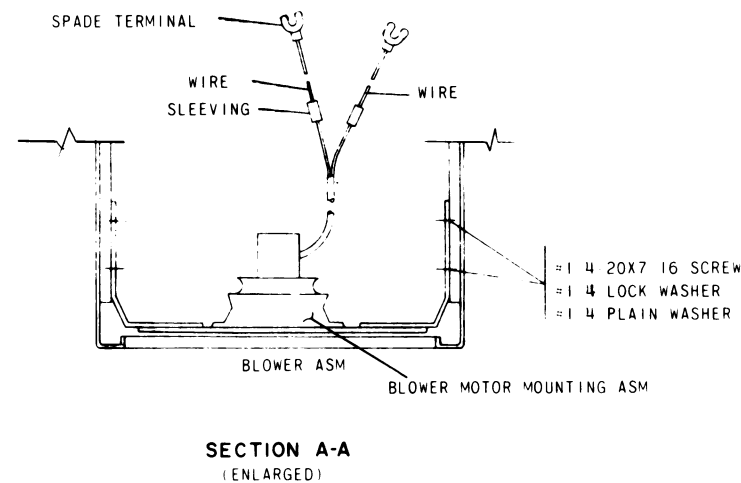
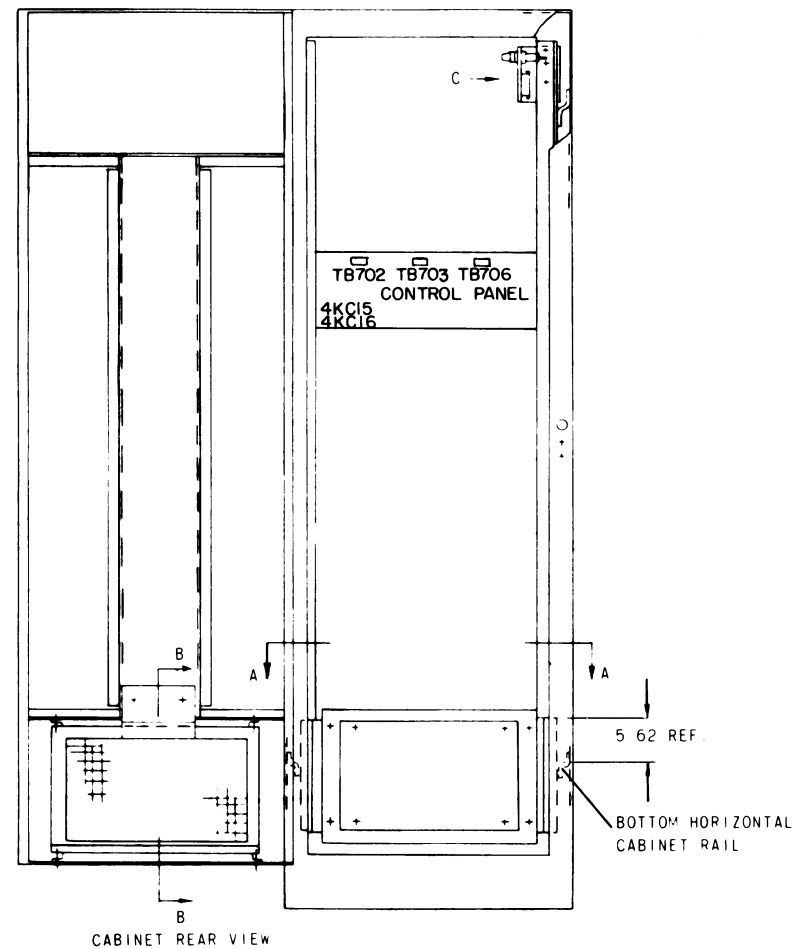
SYMBOL	G-E PART NO.	DESCRIPTION
		----- MISCELLANEOUS -----
	7774536-G2	Filter retainer.
	19B200425-P3	Filter; sim to Air-Maze P-61.
	7139500-P1	Clip, Filter retainer.
		BLOWER MOTOR MOUNTING ASSEMBLY 5491241-G2
		----- MISCELLANEOUS -----
	5491246-P1	Support.
	5491249-P1	Angle Support. (Quantity 2)
	5491247-P1	Felt pad.
	5495252-P1	Fan, axial: 1700 RPM nominal, 115 v, 62 ohms at 1.0 amp; sim to Rotron Type CFG-2R.
		THERMOSTAT CONTROL 19B204730-G2
		----- FUSES -----
F903	7487942-P26	Slow blowing: 1.6 amps at 125 v; sim to Bussman MDL-1.6.
		----- SWITCHES -----
S903	5496655-P1	Thermostat, snap-action: SPST, close on temp rise, auto reset, close at 110°F ±5°F, open at 95°F ±5°F, 25 amp at 120/240 VAC; sim to Metals and Controls 20400-F17-64-F110-1.5.
		----- TERMINAL BOARDS -----
TB903	19C301086-P1	Feed-thru, phen: 3 terminals; sim to GE CR151D75403AB.
		----- SOCKETS -----
XF901	19B209005-P1	Fuseholder, post type, phen: 15 amps at 250 v; sim to Littelfuse 342012.
		----- MISCELLANEOUS -----
	7160508-P2	Spring nut. (Used to mount TB903).

*COMPONENTS ADDED, DELETED OR CHANGED BY PRODUCTION CHANGES.

MOBILE RADIO DEPARTMENT
GENERAL ELECTRIC COMPANY
LYNCHBURG, VIRGINIA 24502



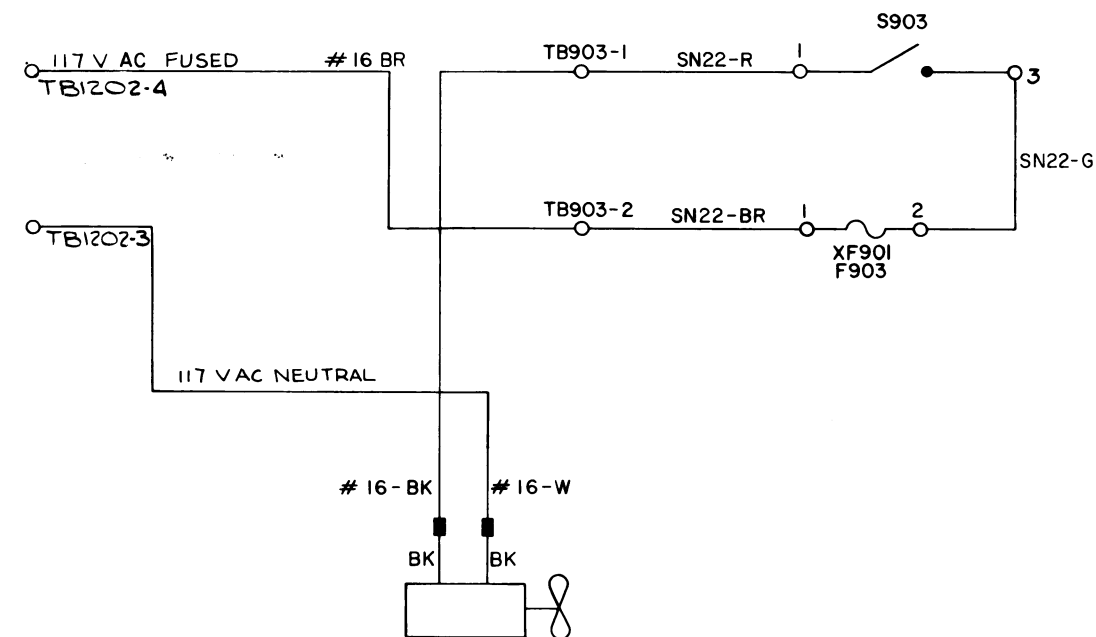
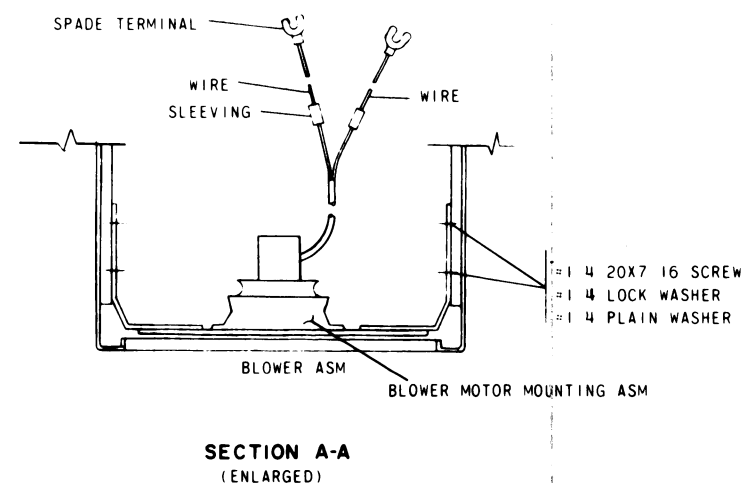
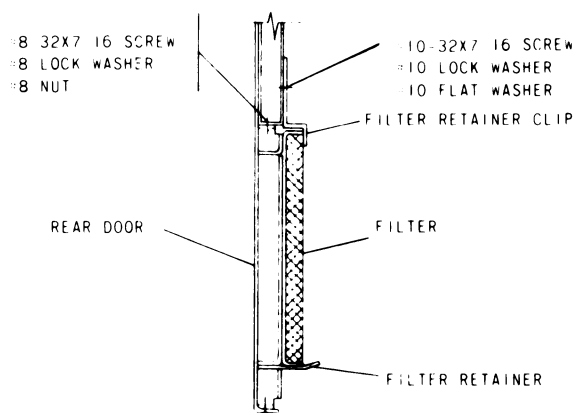
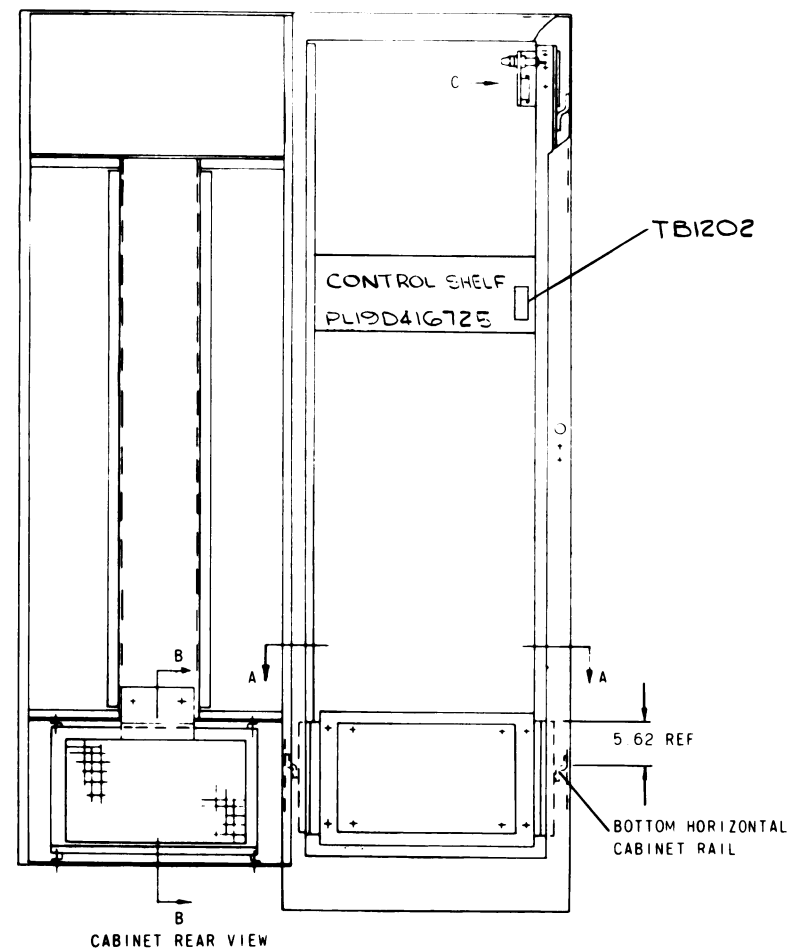
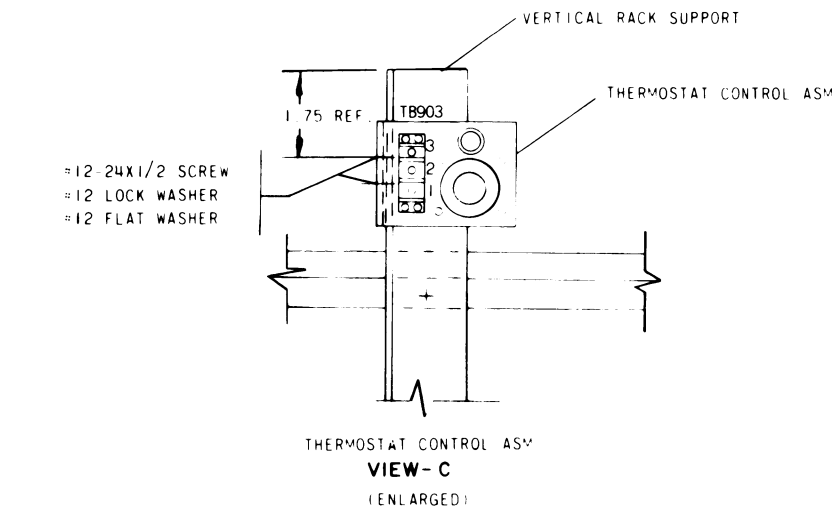
- NOTES:
1. MOUNT BLOWER ASSEMBLY TO BOTTOM HORIZONTAL CABINET RAIL AS SHOWN IN CABINET REAR VIEW AND SECTION A-A. ADJUST THE BLOWER ASM SUCH AS TO PROVIDE A SMALL AMOUNT OF COMPRESSION IN THE FELT AFTER FILTER IS MOUNTED AND REAR DOOR IS CLOSED.
 2. MOUNT FILTER RETAINER TO DOOR IN POSITION SHOWN IN SECTION B-B. INSERT FILTER AND CLAMP IN PLACE WITH RETAINER CLIP.
 3. MOUNT THERMOSTAT CONTROL ASM TO VERTICAL RACK SUPPORT AS SHOWN IN VIEW C.
 4. WIRING
 - A. STRIP ENDS OF WHITE AND BLACK WIRES. SOLDER ONE END OF WHITE WIRE TO BLACK WIRE OF BLOWER MOTOR AND ONE END OF BLACK WIRE TO OTHER BLACK WIRE OF BLOWER MOTOR. COVER SPLICE WITH SLEEVING AND CRIMP TERMINALS TO OTHER ENDS OF THESE WIRES.
 - B. WIRING SEQUENCE
 1. WHITE WIRE FROM FAN GOES TO TB706-3 ON THE CONTROL PANEL.
 2. BLACK WIRE FROM THE FAN GOES TO TB903-1 ON THE THERMOSTAT CONTROL.
 3. CRIMP OR SOLDER TERMINALS TO BROWN WIRE AND RUN FROM TB903-2 ON THERMOSTAT CONTROL TO TB706-4 ON CONTROL PANEL. SECURE WIRE TO HARNESS AT SUITABLE INTERVALS.
 - C. SPOT TIE WIRES TO EXISTING HARNESS



INSTALLATION DIAGRAM

BLOWER ASSEMBLY 4029917G3
FOR VM STATION COMBINATIONS

19D402882, Sheet 1 (Rev. 1)



INSTRUCTIONS:

THESE INSTRUCTIONS COVER THE INSTALLATION OF FAN/FILTER KIT PL4029917G3 INTO A VERTICAL CABINET WITH A 19D416725 CONTROL SHELF.

1. MOUNT BLOWER ASSEMBLY TO BOTTOM HORIZONTAL CABINET RAIL AS SHOWN IN CABINET REAR VIEW AND SECTION A-A. ADJUST THE BLOWER ASM SUCH AS TO PROVIDE A SMALL AMOUNT OF COMPRESSION IN THE FELT AFTER FILTER IS MOUNTED AND REAR DOOR IS CLOSED.
2. MOUNT FILTER RETAINER TO DOOR IN POSITION SHOWN IN SECTION B-B. INSERT FILTER AND CLAMP IN PLACE WITH RETAINER CLIP.
3. MOUNT THERMOSTAT CONTROL ASM. TO VERTICAL RACK SUPPORT AS SHOWN IN VIEW C.
4. WIRING
 - A. STRIP ENDS OF WHITE AND BLACK WIRES. SOLDER ONE END OF WHITE WIRE TO BLACK WIRE OF BLOWER MOTOR AND ONE END OF BLACK WIRE TO OTHER BLACK WIRE OF BLOWER MOTOR. COVER SPLICE WITH SLEEVING AND CRIMP TERMINALS TO OTHER ENDS OF THESE WIRES.
 - B. WIRING SEQUENCE
 1. WHITE WIRE FROM FAN GOES TO TB1202-3 ON THE CONTROL SHELF.
 2. BLACK WIRE FROM THE FAN GOES TO TB903-1 ON THE THERMOSTAT CONTROL.
 3. CRIMP OR SOLDER TERMINALS TO BROWN WIRE AND RUN FROM TB903-2 ON THERMOSTAT CONTROL TO TB1202-4 ON CONTROL SHELF. SECURE WIRE TO HARNESS AT SUITABLE INTERVALS.
 4. SPOT TIE WIRES TO EXISTING HARNESS.

INSTALLATION DIAGRAM

BLOWER ASSEMBLY 4029917G3
FOR VT STATION COMBINATIONS

19D402882, Sheet 2 (Rev. 1)