

 **MOBILE RADIO**

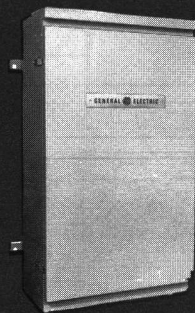
MASTR

PROGRESS LINE

MAINTENANCE MANUAL



**DESK MATE
STATION**



**POLE MOUNT
STATION**

**REPEATER CONTROL
DC REMOTE/REPEATER
AND
TONE REMOTE/REPEATER
CONTROL**

LBI-4521B

DF-9032



**FLOOR MOUNT
STATION**

GENERAL  ELECTRIC

TABLE OF CONTENTS

	Page
EQUIPMENT INDEX	iii
SPECIFICATIONS	iv
COMBINATION NOMENCLATURE	iv
DESCRIPTION	1
Transmitter	1
Receiver	2
Power Supply	2
Antenna Circuits	2
Heater	2
Control Shelf Assembly	2
AC Input	2
Microphone	2
Speaker Assembly	2
METERING CIRCUITS	2
Meter Panel	2
Meter Switching Panel Assembly	3
CIRCUIT ANALYSIS	3
INITIAL ADJUSTMENT	4
Test Equipment Required	4
Transmitter Adjustment	4
Receiver Adjustment	4
Power Supply Adjustment	4
Control Shelf Adjustment	4
MAINTENANCE	4
Preventive Maintenance	4
Test and Troubleshooting Procedures	4
OUTLINE DIAGRAM (Meter Switching Panel)	6
SCHEMATIC DIAGRAM (Meter Switching Panel)	7
INTERCONNECTION DIAGRAMS	
Desk-Mate & Pole-Mount Stations	9
Floor-Mount Station	11
PARTS LIST	
Meter Switching Panel Assembly 19A121460G1	8
Desk-Mate Cabinet 7354211G4	10
Pole-Mount Cabinet 7132483G6	10
Floor-Mount Cabinet 7668242G14	12
Heater Model 4KZ3A1 (Optional)	10
Metering Panel 19C303519G4	12
Line Voltmeter 19A120042G5 (Optional)	12
Microphone 4EM25A10	13
Speaker Assembly 19B219618G1	14

WARNING

No one should be permitted to handle any portion of the equipment that is supplied with high voltage; or to connect any external apparatus to the units while the units are supplied with power. KEEP AWAY FROM LIVE CIRCUITS.

EQUIPMENT INDEX

LBI-4521

EQUIPMENT	TYPE OR MODEL NUMBER
Transmitter	ET-55-A through ET-60-H
Receiver	ER-39-A through ER-42-L
Desk-Mate (DT) Cabinet Pole-Mount (PT) Cabinet	7354211G4 7132483G6
Floor-Mount (VT) Cabinet	7668242G14
Station Power Supply	EP-38-A
Control Shelf	19D416725G1
Control Shelf System Board (Back Plane)	19D416721G1
Repeater Control Repeater Board Audio Board	19D416675G2, G4 19D416667G1
Remote/Repeater - Tone Control Secur-it Tone Board Transmitter Control Board Audio Board Repeater Board	19D416728G1 19D416660G1, G4 19D416667G2 19D416675G2, G6
Remote/Repeater - DC Control DC Remote Control Board Repeater Board Audio Board	19D416661G1 19D416675G2, G6 19D416667G2
Extender Board	19D416760G1
Meter Switching Circuit (VT Station)	19A121460G1
Meter Panel (VT Station)	19C303519G1
Microphone	4EM25A10
Microphone Mounting Kit	7141414G2
Speaker Assembly	19B219618G1
117-VAC Power Cable (DT & VT Stations)	7491206P1
Alignment Tools (hex slug type) (slotted screw type)	4038831P2 4033530G2
Handle (PT Station)	7145676P2

SPECIFICATIONS ***GENERAL****DIMENSIONS (H x W x D)**

Desk-Mate Station
 Pole-Mount Station
 Floor-Mount Station

30-3/8" x 14" x 25-1/2"
 42" x 23" x 12-1/2"
 69" x 22" x 23"

WEIGHT

Desk-Mate
 Pole-Mount
 Floor-Mount

Approximately 150 pounds
 Approximately 200 pounds
 Approximately 300 pounds

DUTY CYCLE (Transmit & Receive)

Continuous

INPUT VOLTAGE117 VAC, $\pm 20\%$, 50/60 Hz**INPUT POWER**

Transmit: 1.66 Amps max. 195 Watts
 Receive: 0.8 Amps max. 95 Watts

TEMPERATURE RANGE

-30°C (-22°F) to +60°C (+140°F)

* These specifications are intended primarily for use by the serviceman. Refer to the appropriate Specification Sheet for the complete specifications.

COMBINATION NOMENCLATURE

1st Digit	2nd Digit	3rd Digit	4th Digit	5th Digit	6th Digit	7th Digit	8th & 9th Digits
Mechanical Package	Operating Voltage	RF Power Output Range	Channel Spacing	Control	Number of Freq.	Options	Frequency Range
D Desk Mate Station	T 117 VAC	5 16-38 Watts	4 20 kHz	Y Repeater Station	A 1-Freq. T 1-Freq. R	S Standard	11 25-33 MHz
P Pole Mount Station		6 38-64 Watts	5 25 kHz	U DC Remote/ Repeater Station		U Channel Guard	22 33-44 MHz
V Floor Mount Station		7 64-128 Watts	6 30 kHz	V Tone Remote/ Repeater Station			33 42-50 MHz
			7 40 kHz				44 66-77 MHz
			8 50 kHz				45 77-88 MHz
			9 60 kHz				55 132-150.8 MHz
							66 150.8-174 MHz
							77 406-420 MHz
							88 450-470 MHz
							89 470-494 MHz
							91 494-512 MHz

DESCRIPTION

General Electric MASTR Progress Line Repeater, Tone Remote/Repeater, and DC Remote Repeater Control Stations are ruggedly built two-way Radio Stations. Both the transmitter exciter and the receiver are fully transistorized. Silicon transistors are used throughout for added reliability.

Three Cabinet styles (Desk-Mate, Pole-Mount & Floor-Mount) are available to meet different system requirements. Individual characteristics of the cabinets are listed in the following paragraphs.

- Desk-Mate - The Desk-Mate station can be conveniently located adjacent to a desk to provide additional working area, or in some other suitable area as required. Both side panels on the station can be easily removed to gain access to the unit modules for servicing.
- Pole-Mount - The Pole-Mount station is ruggedly built and can be mounted outdoors in remote locations regardless of weather conditions. An optional heater kit is available for installa-

tion where the climate is such that the cabinet temperature drops below 5°F. The unit modules are mounted to a "swing out" rack to facilitate servicing either side of the equipment.

- Floor-Mount - The Floor-Mount station can be placed in the control building adjacent to the antenna installation or it may be located in another area as required. Front and back doors on the station cabinet can be opened to gain access to the unit modules. The rear door is interlocked to protect personnel from contact with voltages. When the rear door is opened, the interlock switch opens the power supply output to the transmitter. A 117-VAC receptacle is mounted inside the rear of the cabinet for plug-in of service equipment.

TRANSMITTER

The transmitter assembly consists of the transistorized exciter board and the power amplifier section. The standard transmitter may be equipped with:

- One through four frequencies
- Channel Guard (tone squelch)

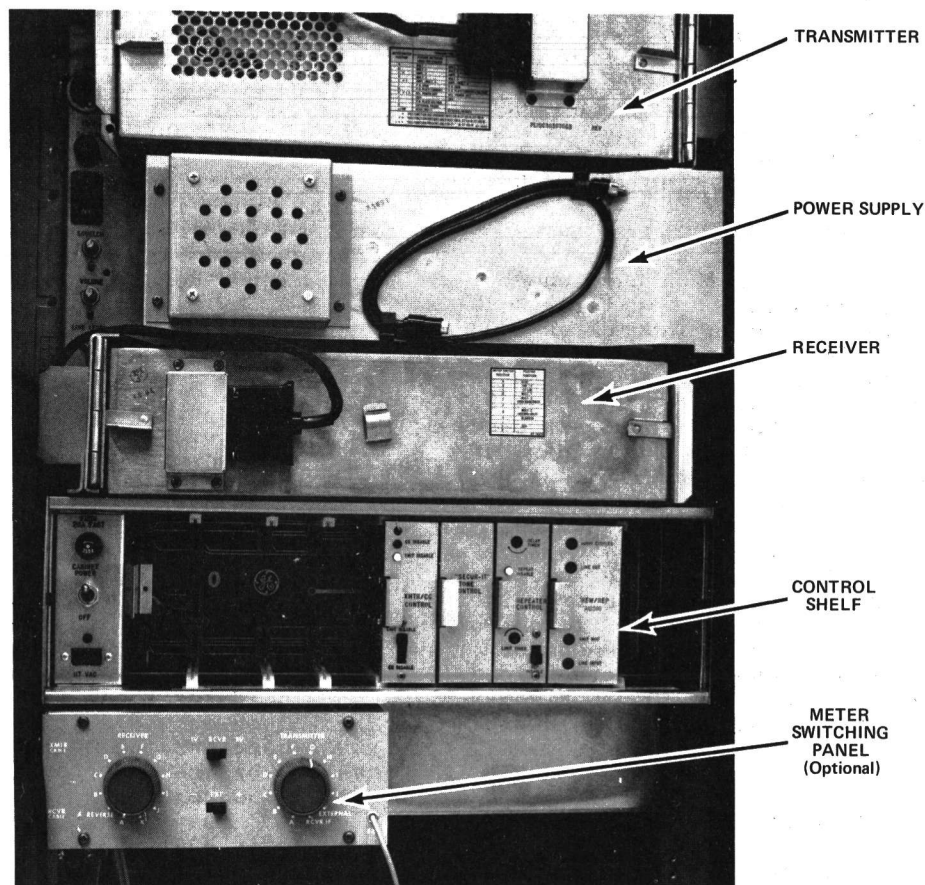


Figure 1 - Typical Station Equipment Arrangement

RECEIVER

The fully transistorized receiver is completely contained in an aluminum casting, which provides excellent electrical shielding and reduces the effects of vibration. The standard receiver may be equipped with:

- One through four frequencies
- Channel Guard (tone squelch)

POWER SUPPLY

Station Power Supply Type EP-38-A provides operating voltages for the transmitter, receiver and control shelf. In addition to plate, screen and bias voltages for the transmitter, the power supply provides:

- Regulated -20 Volts for the transistorized transmitter exciter-board
- Regulated +10 Volts for the receiver, transmitter Channel Guard, and Control Shelf.
- Regulated +12.6 Volts for transmitter filaments, receiver audio, relays and pilot lights.

Antenna Circuits

The receiver antenna is connected to the left socket and the transmitter antenna to the right socket on the antenna mounting bracket. From the antenna mounting bracket, the receiver antenna is connected to receiver jack J441 and the transmitter antenna to transmitter jack J103.

Heater (Optional) (4KZ3A1)

The Heater is an option used where the climate is such that an auxiliary cabinet heater is required. The heater consists of a 250-Watt heater strip and a temperature-operated switch. When the temperature of the cabinet drops below 5°F, the switch closes, thereby applying power to the heater strip. When the temperature rises above 5°F, the heater will be turned off by the opening of the switch. The heater strip is usually mounted on the bottom of the cabinet on the inside in a convenient location. Splice one lead from the temperature switch to a lead from the heater strip. Connect the other lead from the temperature switch to EP-38-A power supply, TB502-14. Connect the other lead from heater strip to TB502-15. For complete Installation Instructions of Heater Kit refer to EBI-4353.

CONTROL SHELF ASSEMBLY

Control Shelf 19D416725G1 contains the System Board, the AC Input Circuit and plug-in printed wire modules for Repeater,

DC Remote/Repeater or Tone Remote/Repeater functions.

The shelf mounts on the chassis mounting frame below the Transmitter-Receiver Power Supply.

AC Input

The 117 VAC input is connected directly to TB1202-1 and -2. All power to the station is controlled by switch S1201 on the control shelf. When S1201 is turned ON, the green Power-On light on the meter panel will become illuminated.

An optional 220/110 VAC Stepdown Transformer Kit is available for use when the input line voltage is 220 VAC.

WARNING

117-Volts AC is always present at TB1202-1 and -2, even when S1201 is in the OFF position. Always use care when servicing the cabinet power module on the control shelf.

MICROPHONE

Microphone Model 4EM25A10 is mounted inside the station for use during service and maintenance work by the serviceman. The microphone is connected to jack J902 located on the front side of the power supply.

SPEAKER ASSEMBLY

Speaker Assembly 19B219618G1 is designed for an audio input of 1.5 Watts when used in MASTR Progress Line Remote Stations. The Speaker Assembly mounts on the chassis of Transmitter-Receiver power supply Type EP-38-A, as an aid to the serviceman.

NOTE

When a speaker is not used, a 3.5 ohm, 10-Watt resistor must be connected from TB501-11 to TB502-5 as a substitute for the speaker load impedance.

METERING CIRCUITS

Meter Panel (19C303519G4)

The Meter Panel is located above the front door on the station cabinet. The panel contains the following meters for making voltage test readings in the transmitter and receiver:

- Meter M901--Measures test voltages in transmitter circuits.

The Meter voltage check points are:

Tx (S1001) & Rx (S1002) Switch Posi- tion No.	Transmitter Function	Meter Range Full Scale	Receiver Function	Meter Range Full Scale
A	MULT 1	1 V	DISC	1 V*
B	MULT 2	1 V	2nd IF	1 V*
C	AMPL 3	1 V	1st LIM	1 V*
D	MULT 3	1 V	MULT 1	1 V*
E**	AMPL/MULT 4	1 V	MULT 2	1 V*
F	PA GRID	1 V	-----	
G	PA PLATE CURRENT	1 V	AUDIO PA	1 V*
H***	POWER OUTPUT	1 V	BLANKER	1 V*
I	20 VOLTS	30 V	-----	
J	PA PLATE VOLTAGE	1,000 V	10-VOLTS	15 V
K	EXTERNAL PROBE	3 V	-----	
L/VM	RECEIVER 2nd IF	1 V	-----	

* can be increased to 3-V by switch S1003.

** used only in ET-58-B, ET-59-D & ET-60-D

*** used only in ET-59-D, & ET-60-D

- Meter M902--Measures voltages in receiver circuits.
- Line Voltmeter-19A120042G5 (option)--continuously monitors line voltage. The meter is a 0-150 VAC voltmeter connected across the 117 VAC line.

Meter Switching Panel Assembly (19A121460G1)

The Meter Switching Panel Assembly is mounted on the front of the accessory panel and contains the switches and circuitry for switching from stage to stage in the receiver and transmitter. The voltage readings for each stage indicated on the meters located in the Meter Panel. The Meter Switching Panel Assembly includes:

- Plug P1001--plugs into transmitter centralized metering jack J102. (or J1001 if optional transmitter top cover is used).
- Plug P1002--plugs into receiver centralized metering jack J442. (or J1002 if optional receiver top cover is used).
- Test Probe P1003--to measure high power amplifier grid voltage.
- Switch S1001--to switch transmitter voltage test points into the test meter circuit.
- Switch S1002--to switch receiver voltage test points into the test meter circuit.
- Switch S1004--test probe polarity reversing switch.

Test probe P1003 is used to measure the high voltage power amplifier grid current/voltage and plugs into the PA grid jack on the high power supply.

Refer to the transmitter and/or receiver maintenance manual for the proper voltage readings for each stage tested.

Transmitter voltages readings will be indicated on transmitter "tune up" meter (M901) and receiver readings will be indicated on the receiver "tune up" meter (M902). Both meters are located on the Meter Panel.

CIRCUIT ANALYSIS

The voltage test points in the receiver and transmitter are connected through the connecting cables to lug terminals on the receiver and transmitter voltage wafer switches. With the receiver switch in the "A" meter switch position for example, the discriminator output voltage is connected by the switch to TB901-11-12 through wire numbers 22 and 23 to receive meter (M902) in the Meter Panel. If the transmitter switch is in the "F" position, for example, the PA grid voltage is connected by the switch to TB901-9-10, through wire numbers 20 and 22 to meter (M901) in the Meter Panel.

Switch S1003 is used to connect the 3-Volt multiplying resistor into the receiver circuit. Test probe P1003 is used to measure the high power amplifier grid drive. When using the test probe, turn the transmitter switch S1001 to the "External" position. R1002 is a multiplier resistor in series with the test probe to make the meter 3-Volts full scale when using the external probe.

Resistor R1007 is a multiplier resistor in series with the receiver meter then switch S1003 is in the 3-Volt position. Silicon rectifiers CR1001, CR1002, resistors

R1003 and R1004 in the transmitter meter circuit and CR1003, CR1004, R1005 and R1006 in the receiver meter circuit protect the meters from overload and voltage spikes.

NOTE

For continuous monitoring of test voltages, optional transmitter and receiver top covers, (19C303676G3 and G2, respectively) are available. The covers contain external sockets to attach the transmitter and receiver cables from the Meter Switching Panel Assembly.

INITIAL ADJUSTMENT

After the Station has been installed as described in the Installation Manual, the transmitter, receiver, power supply, and control shelf must be adjusted by an electronics technician who holds a 1st or 2nd Class FCC Radiotelephone or Radiotelegraph license before the station can be placed in operation. Built-in metering circuits are provided with the station.

TEST EQUIPMENT REQUIRED

The following test equipment is required for the adjustment of both transmitter and receiver:

1. A tuning tool and a screwdriver.
2. A signal source operating at the system frequency (preferably the transmitter which will normally be monitored by the receiver).

TRANSMITTER ADJUSTMENT

The initial adjustment for the transmitter includes:

- Loading the power amplifier into the antenna.
- Checking the frequency and modulation.

For the Initial Adjustment procedure, refer to the ALIGNMENT PROCEDURE in the MAINTENANCE MANUAL for the transmitter.

RECEIVER ADJUSTMENT

The initial adjustment for the receiver includes:

- Zeroing the receiver to the system operating frequency.
- Matching the antenna coupling transformer to the antenna.

For the Receiver Initial Adjustment Procedure, refer to the FRONT END ALIGNMENT PROCEDURE in the MAINTENANCE MANUAL for the receiver.

POWER SUPPLY ADJUSTMENT

The initial adjustment for the power supply includes:

- Turning switch S501 ON.
- Adjusting VOLUME (R511) and SQUELCH (R512) as follows:

Set the SQUELCH to the point at which the noise disappears; then set VOLUME to optimum listening level.

CONTROL SHELF ADJUSTMENT

The initial adjustment for the repeater control panel includes:

- Turning switch S1201 ON.
- Adjusting the required Tone or DC Controls.

For Tone or DC Controls adjustment procedure, refer to CONTROL SHELF MAINTENANCE MANUAL LBI-4490.

CHANNEL GUARD RECEIVER MODIFICATION

To interchange receivers in a Remote/Repeat Station with Channel Guard, the following receiver modification is required.

1. Remove the wire between J2 of the Channel Guard Board and J11 of the Audio/Squelch Board.
2. If wires are already connected to J443-6 and J443-7, clip them off close to the harness.
3. Connect a Green #22 wire between J22 of the Audio/Squelch Board and J443-6.
4. Connect a Blue #22 wire between J2 of the Channel Guard Board and J443-7.

Modification Kit 19A129451G1 contains the accessory parts for field conversions.

MAINTENANCE**PREVENTIVE MAINTENANCE**

To insure high operating efficiency and to prevent mechanical and electrical failures from interrupting system operations, routine checks should be made of

all mechanical and electrical parts. This preventive maintenance should include the maintenance checks listed on the following page.

In addition, specific troubleshooting procedures are available to assist the serviceman in troubleshooting the transmitter, receiver and power supply.

TEST AND TROUBLESHOOTING PROCEDURES

Individual Maintenance Manuals for transmitter and receiver describe standard test procedures the serviceman can use to compare the actual performance of the transmitter or receiver against the specifications of the unit when shipped from the factory.

For best results in servicing the station, the TEST PROCEDURES should be used in conjunction with the TROUBLESHOOTING PROCEDURES. Both sheets are listed in the Table of Contents of the applicable Maintenance Manual.

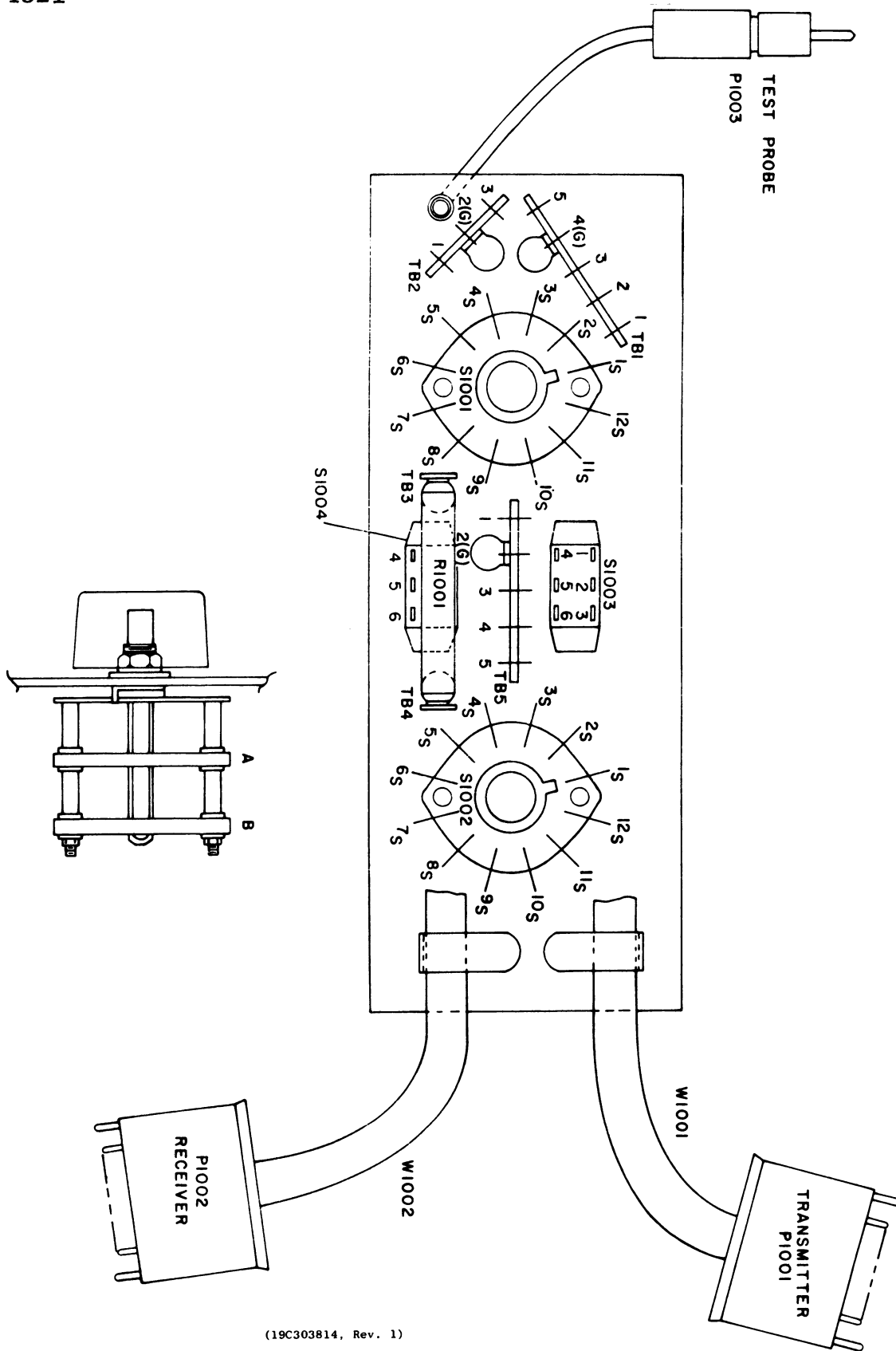
PREVENTIVE MAINTENANCE PROGRAM

CHECK THE FOLLOWING ONCE A YEAR:

1. Transmitter frequency and deviation (FCC requires this check up ONCE a year) ☐
2. Measure and record the antenna system V.S.W.R. ☐
3. Check input voltage at TB1202-1 and -2 on control shelf. Reading should be within 20% of 117 VAC. (Also check during routine service calls) ☐
4. Compare and record transmitter meter readings with voltages taken during initial tune-up. Retune, if necessary ☐
5. Compare and record receiver meter readings with voltages taken during initial tune-up. Retune, if necessary ☐
6. Check for positive indication of pressure on transmission line pressure gauge (if pressurized line is used) ☐
7. Clean dust from fan blades and lubricate bearings ☐
8. Burnish pitted or coated relay contacts to smooth out metallic deposits or remove the coating ☐

MAKE THE FOLLOWING MAINTENANCE CHECKS DURING ROUTINE SERVICE CALLS:

1. Check antenna lines and mast for mechanical stability ☐
2. Visually check:
 - External cables ☐
 - Internal cables ☐
 - Plugs ☐
 - Sockets ☐
 - Terminal boards ☐
3. Check for tightness of nuts, bolts, and screws to make sure nothing is working loose from its mounting ☐
4. Replace tubes as necessary. (It may be convenient to replace all station tubes during the yearly check-up) ☐

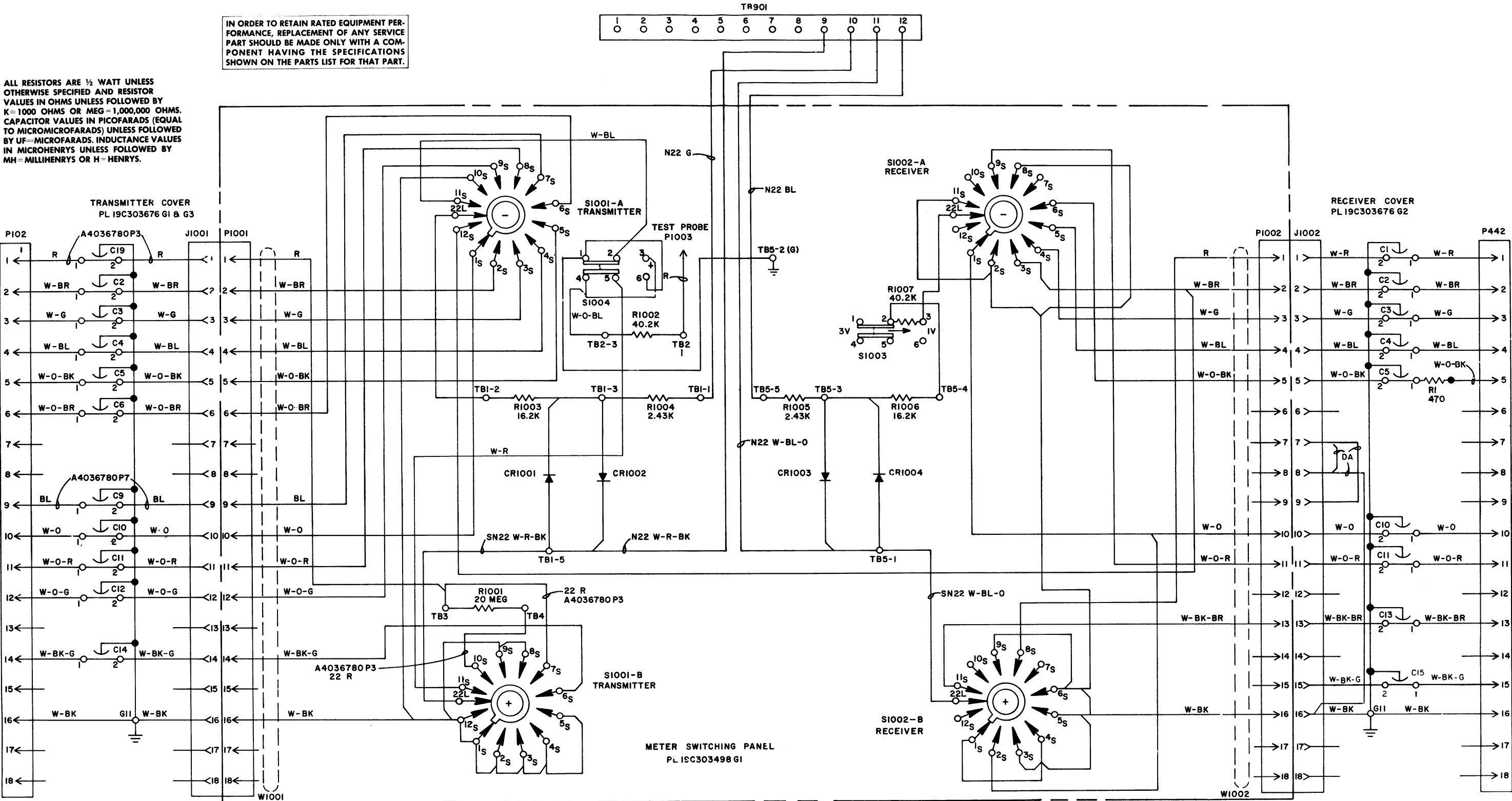


OUTLINE DIAGRAM

MASTR FLOOR-MOUNT STATION COMBINATION
METER SWITCHING PANEL ASSEMBLY 19A121460G1

IN ORDER TO RETAIN RATED EQUIPMENT PERFORMANCE, REPLACEMENT OF ANY SERVICE PART SHOULD BE MADE ONLY WITH A COMPONENT HAVING THE SPECIFICATIONS SHOWN ON THE PARTS LIST FOR THAT PART.

ALL RESISTORS ARE 1/2 WATT UNLESS OTHERWISE SPECIFIED AND RESISTOR VALUES IN OHMS UNLESS FOLLOWED BY K=1000 OHMS OR MEG=1,000,000 OHMS. CAPACITOR VALUES IN PICO FARADS (EQUAL TO MICROMICROFARADS) UNLESS FOLLOWED BY UF= MICROFARADS. INDUCTANCE VALUES IN MICROHENRYS UNLESS FOLLOWED BY MH= MILLIHENRYS OR H= HENRYS.



PARTS LIST			SYMBOL	G-E PART NO	DESCRIPTION
LBI-3565C					
METER SWITCHING PANEL ASSEMBLY 19A121460-G1					
SYMBOL	G-E PART NO.	DESCRIPTION			
		METER SWITCHING PANEL 19C303498-G1			COVER ASSEMBLY 19C303676-G1 (TRANSMITTER STATION METERING) 19C303676-G2 (RECEIVER STATION METERING) 19C303676-G3 (TRANSMITTER STATION METERING, VENTILATED)
		----- DIODES AND RECTIFIERS -----			----- CAPACITORS -----
CR1001 thru CR1004	5494922-P1	Silicon; sim to Type 1N456.	C1 thru C6	5493392-P7	Ceramic, feed-thru: .001 μ f +100% -0%, 500 VDCW; sim to Allen-Bradley Type FA5C.
		----- PLUGS -----	C9	19B209282-P1	Ceramic, feed-thru: 680 pf \pm 20%, 1000 VDCW; sim to Sprague Type 544C.
P1001		(Part of W1001).	C10 thru C14	5493392-P7	Ceramic, feed-thru: .001 μ f +100% -0% 500 VDCW; sim to Allen-Bradley Type FA5C.
P1002		(Part of W1002).	C15*	5493392-P7	Ceramic, feed-thru: .001 μ f +100% -0%, 500 VDCW; sim to Allen-Bradley Type FA5C. Added by Rev B.
P1003	4032797-P1	Probe, test; sim to Birnbach Type 415 (red).	C19	19B209282-P1	Ceramic, feed-thru: 680 pf \pm 20%, 1000 VDCW; sim to Sprague Type 544C.
		----- RESISTORS -----			----- JACKS AND RECEPTACLES -----
R1001	5496955-P576	Deposited carbon: 20 megohms \pm 2%, 2 w; sim to Texas Instruments Type CD2R.	J1001 and J1002	19B205689-G2	Connector: 18 contacts.
R1002	5495948-P359	Deposited carbon: 40,200 ohms \pm 1%, 1/2 w; sim to Texas Instruments Type CD1/2MR.			----- PLUGS -----
R1003	5495948-P321	Deposited carbon: 16,200 ohms \pm 1%, 1/2 w; sim to Texas Instruments Type CD1/2MR.	P102	19B204727-P1	Connector: 18 contacts rated at 1000 VDC max.
R1004 and R1005	5495948-P238	Deposited carbon: 2430 ohms \pm 1%, 1/2 w; sim to Texas Instruments Type CD1/2MR.	P442	19B204727-P1	Connector: 18 contacts rated at 1000 VDC max.
R1006	5495948-P321	Deposited carbon: 16,200 ohms \pm 1%, 1/2 w; sim to Texas Instruments Type CD1/2MR.			----- RESISTORS -----
R1007	5495948-P359	Deposited carbon: 40,200 ohms \pm 1%, 1/2 w; sim to Texas Instruments Type CD1/2MR.	RI*	3R77-P471K	Composition: 470 ohms \pm 10%, 1/2 w. Added by Rev A.
		----- SWITCHES -----			
S1001 and S1002	19C307113-P2	Rotary: 2 sections, 2 poles, 12 positions, non-shorting contacts, 2 amps at 28 VDC or 1 amp at 110 VDC; sim to Oak 235585-K2.			
S1003 and S1004	7145098-P1	Slide: DPDT, 3/4 amp at 125 VAC or 1/2 amp at 125 VDC; sim to Stackpole SS-150.			
		----- TERMINAL BOARDS -----			
TB1	7775500-P9	Phen: 5 terminals.			
TB2	7775500-P7	Phen: 3 terminals.			
TB3 and TB4	7775500-P46	Phen: 1 terminal.			
TB5	7775500-P9	Phen: 5 terminals.			
		----- CABLES -----			
W1001	19C303568-P2	Metering: includes 18 pin plug (P1001) rated at 1000 VDC max, approx 38 inches long.			
W1002	19C303568-P2	Metering: includes 18 pin plug (P1002) rated at 1000 VDC max, approx 38 inches long.			
		----- MISCELLANEOUS -----			
	19B204861-G1	Chassis. (Used in 19C303498-G1).			
	7763541-P5	Cable, clamp. (Used with W1001 and W1002 in 19C303498-G1).			
	7487773-P6	Knob: red; sim to Eastman Chemical 28739. (Used with S1001 and S1002 in 19C303498-G1).			
	19B204590-G1	Box. (Used in 19A121460-G1).			
	4029030-P11	Rubber channel seal: approx 2-1/2 inches long. (Used in 19A121460-G1).			

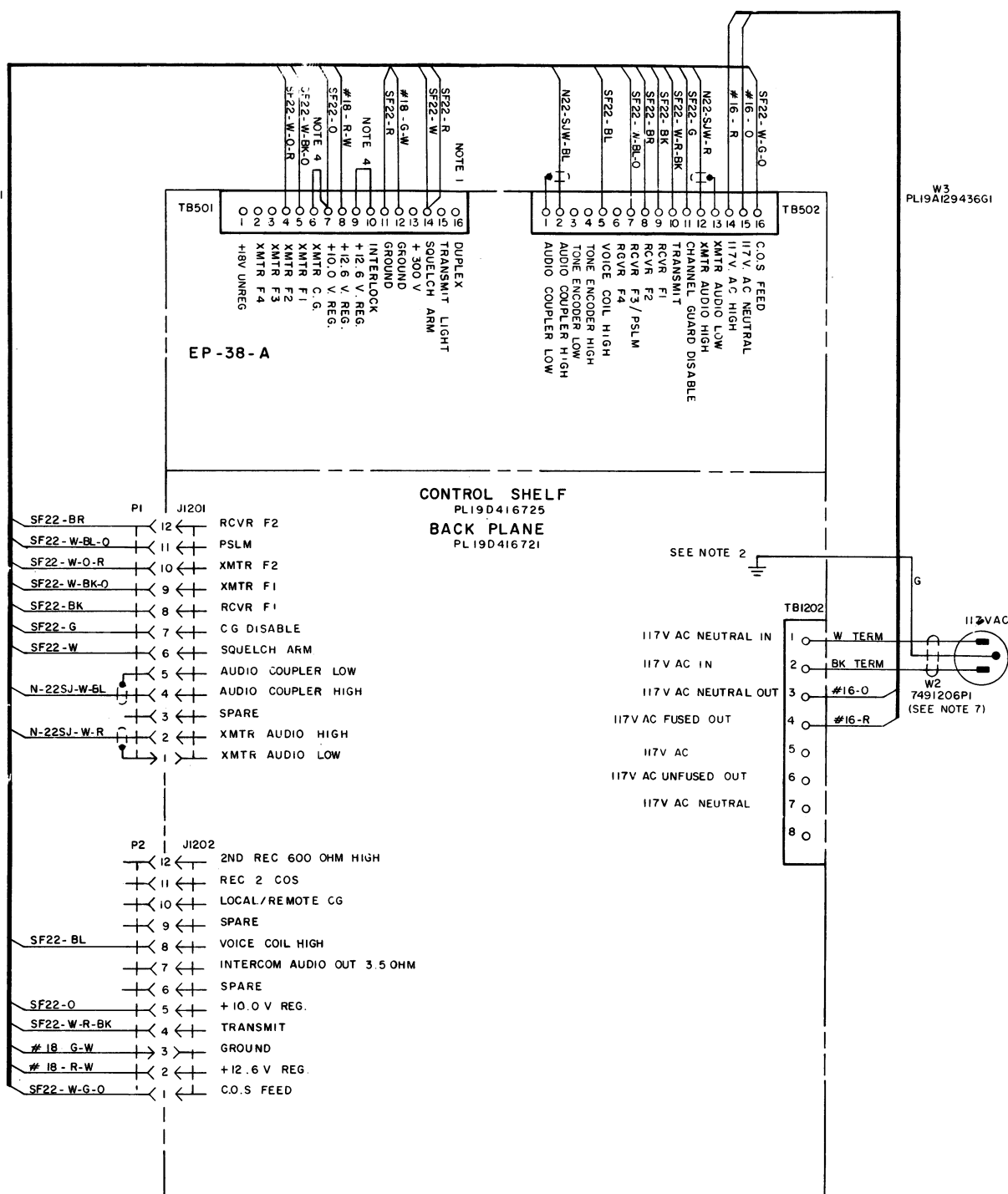
*COMPONENTS ADDED, DELETED OR CHANGED BY PRODUCTION CHANGES.

PRODUCTION CHANGES

Changes in the equipment to improve performance or to simplify circuits are identified by a "Revision Letter", which is stamped after the model number of the unit. The revision stamped on the unit includes all previous revisions. Refer to the Parts List for descriptions of parts affected by these revisions.

REV. A — To eliminate 3 db loss in receiver sensitivity with cover on.
Added R1 to receiver metering cover.

REV. B — To allow audio metering with cover. Added C15.

W1
PL19C320316G1W3
PL19A129436G1

(19D416787, Rev. 0)

MASTR DESK-MATE AND POLE MOUNT STATION COMBINATIONS

PARTS LIST

LBI-3562

POLE MOUNT STATION CABINET
7132483-G6

SYMBOL	G-E PART NO.	DESCRIPTION
	7353495-P5, 18, 19, 20	Door Assembly: weather seal: rubber, Manhattan Div. of Raybestos Manhattan Inc.; Passaic, N.J. 1/2" OD x 1/4" ID x 9'7", A12A2A
	7769652-G1	Hinge Assembly: (for swing out mounting bracket) Hinge, door: Stanley, cat #195 with leaves assembled reversed, no swage, without mounting holes. (give all above information when re-ordering) Pull-Latch: Corbin Cab Lock Co. #015642SD.
	7769631-G1	Mounting bracket: (mounts on swing away hinge assembly.)

*COMPONENTS ADDED, DELETED OR CHANGED BY PRODUCTION CHANGES

PARTS LIST

HEATER

MODEL 4KZ3A1

SYMBOL	G-E PART NO.	DESCRIPTION
HR901		Heater Strip: sim to General Electric 51-344.
S901		Thermo-switch: adjusted to +5°F, sim to Fenwall Inc. A-7300.

*COMPONENTS ADDED, DELETED OR CHANGED BY PRODUCTION CHANGES.

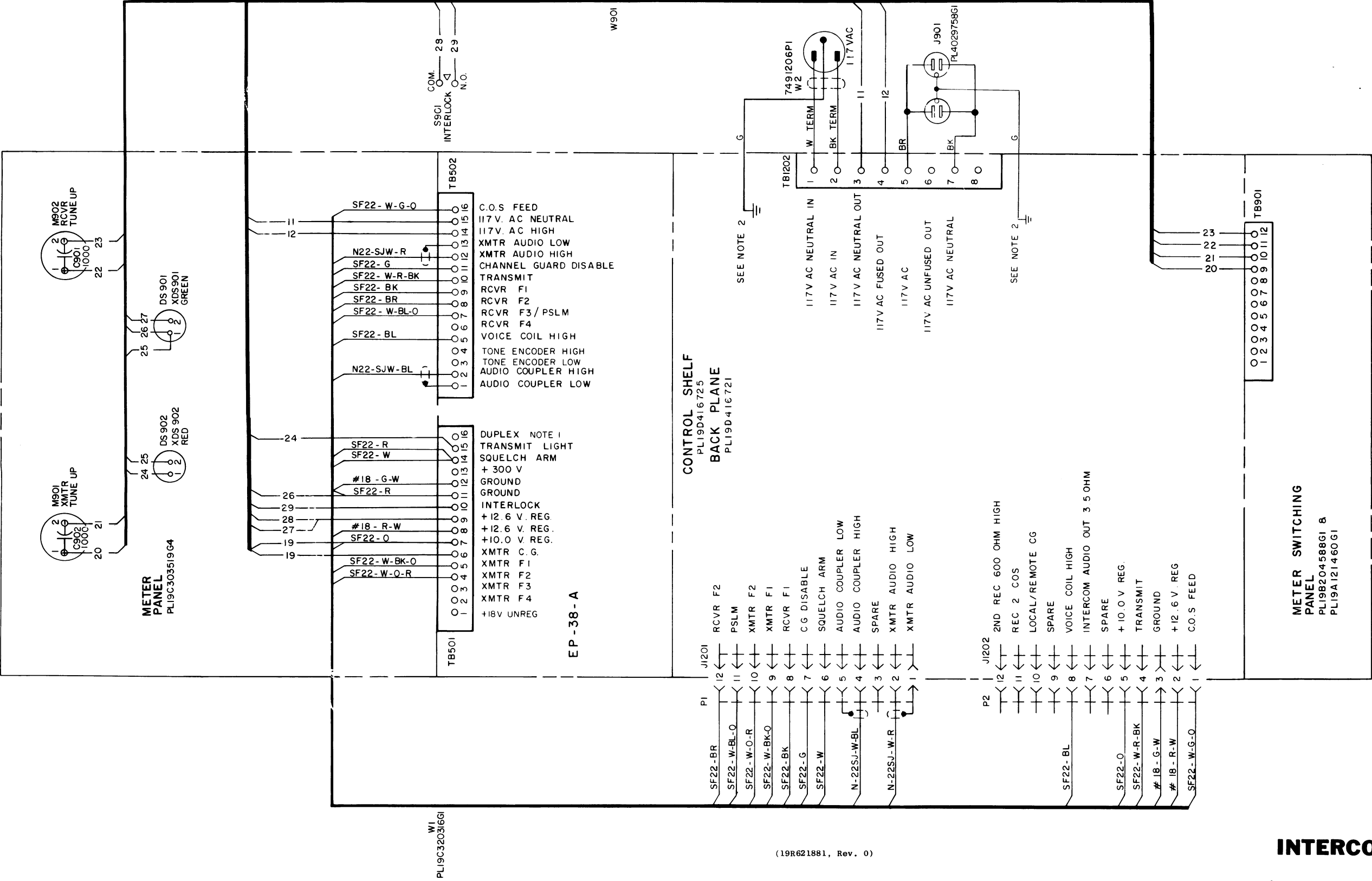
PARTS LIST

LBI-3561

DESK MATE STATION CABINET
7354211-G4

SYMBOL	G-E PART NO.	DESCRIPTION
	7354211-P4	Cabinet Assembly
	7354211-P8	Door (fits either side)
	4035449-P5	Bumper, door: rubber, sim to Atlantic India Rubber Co. 1165.
	4033979-P1	Lock and Key: sim to Yale & Towne 6678DX1. Key: Yale & Towne LL201.
	N529P38C	Plug (for cable knockouts at bottom of assembly)
	7354211-P7	Mounting rack (2 drilled angles)

*COMPONENTS ADDED, DELETED OR CHANGED BY PRODUCTION CHANGES.



ALL RESISTORS ARE 1/2 WATT UNLESS OTHERWISE SPECIFIED AND RESISTOR VALUES IN OHMS UNLESS FOLLOWED BY K=1000 OHMS OR MEG=1,000,000 OHMS CAPACITOR VALUES IN PICOFARADS (EQUAL TO MICROFARADS) UNLESS FOLLOWED BY UF=MICROFARADS INDUCTANCE VALUES IN MILLIHENRYS UNLESS FOLLOWED BY MH=MILLIHENRYS OR H=HENRYS.

NOTES:

1. MOVE THE W-R WIRE INSIDE 4EP38A FROM TB501-16 TO TB501-7 FOR REPEAT COMBINATIONS OR IF RECEIVER MUTE IS NOT DESIRED.
2. CONNECT GREEN LEAD TO CONVENIENT CHASSIS MOUNTING SCREW.
3. TO DISABLE RECEIVER CHANNEL GUARD REMOVE WIRE FROM TB502-11 ON 4EP38A.
4. IN REMOTE/REPEAT COMBINATIONS WITH CHANNEL GUARD, LIFT SF22-G WIRE ON TB502-11 AND ADD JUMPER BETWEEN TB502-11 AND TB501-11. (JUMPER IS PART OF 19A12945G1 KIT).
5. WHEN TONE REMOTE SQUELCH OPTION IS PRESENT, REMOVE SF22-R WIRE BETWEEN TB501-11 AND TB501-14.

INTERCONNECTION DIAGRAM

MASTR FLOOR-MOUNT REPEATER CONTROL
DC REMOTE/REPEATER & TONE REMOTE/
REPEATER CONTROL STATION COMBINATION

PARTS LIST

LBI-4520A
MEDIUM POWER FLOOR MODEL STATION CABINET
7668242G14

SYMBOL	GE PART NO.	DESCRIPTION
	7488490P4	Door handle: includes key LL-802; sim to Yale and Towne S1410S.
	5491682P19	Rim lock. (Used with door handle).
	19A115141P2	Ground lug.
	5493646G1	Instruction book holder.
		CABINET ASSEMBLY 19D402873G1
	5498454G1	Cabinet shell: approx 69 x 22 x 5/8 inches.
	5495572G1	Rear door.
	7774537P1	Angle, mounting.
	5495571G6	Front door.
	4031566P1	Rear door grille.
		ASSOCIATED ASSEMBLIES
		----- JACKS AND RECEPTACLES -----
J901	4029758G1	Duplex outlet, phen: polarized, 15 amps at 125 v.
		METER PANEL ASSEMBLY 19C303519G4
		----- CAPACITORS -----
C901 and C902	5494481P11	Ceramic disc: 1000 pf ±20%, 1000 VDCW; sim to RMC Type JF Discap.
		----- INDICATING DEVICES -----
DS901 and DS902	19C307037P19	Lamp, incandescent: 14 v; sim to GE 756.
		----- METERS -----
M901 and M902	5491869P11	Microammeter: -10/0/+50 µa, 3-1/2 inch; sim to GE Type DO-91.
		----- CABLES -----
W901		CABLE ASSEMBLY 19A129447G1
		----- SWITCHES -----
S901	19A115887P1	Push: 10 amps at 125/250 VAC; sim to Microswitch 2AC1.
	19B209260P102	Terminal, solderless: sim to AMP 40763. (Quantity 11).
	19B209268P110	Terminal, solderless: sim to AMP 41549. (Quantity 2).
	19B209268P101	Terminal, solderless: sim to AMP 42035-1. (Quantity 4).
		----- SOCKETS -----
XDS901	7141855P13	Lamp: green plastic lens; sim to Dialight 135.
XDS902	7141855P12	Lamp: red plastic lens; sim to Dialight 135.
		----- MISCELLANEOUS -----
	NP243463	Meter Panel, nameplate: etched aluminum.
	NP243528	Nameplate (GE).

SYMBOL	GE PART NO.	DESCRIPTION
W1		INTERCONNECTION CABLE 19C320316G1
	19B209288P20	Shell.
	5496809P17	Contact, pin: female, brass; sim to Molex Products 1381-T. (Quantity 15).
	5496809P18	Contact, pin: male, brass; sim to Molex Products 1380-T. (Quantity 2).
	19B209260P102	Terminal, solderless: sim to AMP 40763. (Quantity 5).
	19B209260P103	Terminal, solderless: sim to AMP 60495-1. (Quantity 13).
		LINE VOLTMETER 19A120042G5
		----- CAPACITORS -----
C1	3R81P102M	Ceramic disc: 1000 µf ±20%, 500 VDCW.
		----- METERS -----
M1	5491869P7	Voltmeter, AC: 0-150 VAC, 15,000 ohms ±10%, 100 ohms per volt movement, 3-1/2 inch; sim to GE Type DO-91.

*COMPONENTS ADDED, DELETED OR CHANGED BY PRODUCTION CHANGES

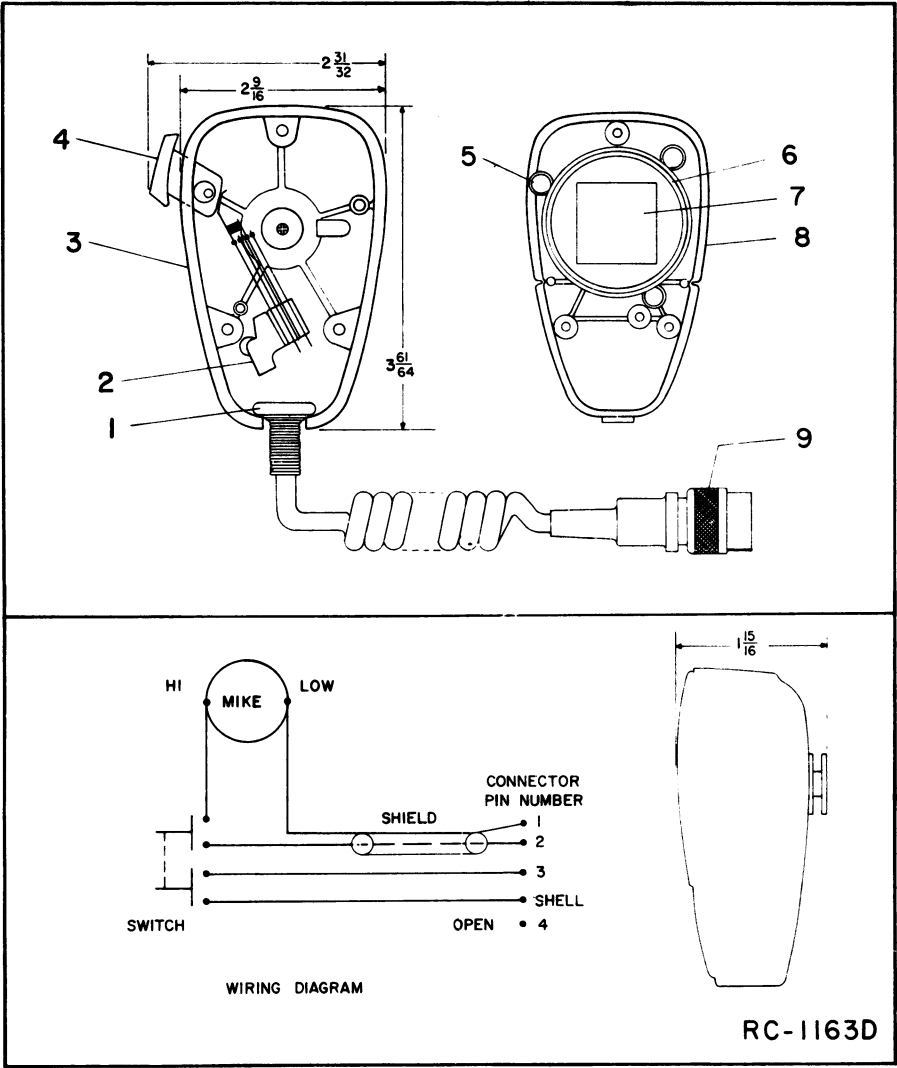
PARTS LIST

LBI-35586

MILITARY MICROPHONE
 MODEL 4EM25A10
 (PL-19B209102-P1)
 (SEE RC-1163)

SYMBOL	G-E PART NO.	DESCRIPTION
		MECHANICAL PARTS
		MODEL 4EM25A10
1		Cable clamp. Shure Brothers RP-16.
2		Switch. Shure Brothers RP26.
3		Case (back) and mounting button: plastic. Shure Brothers RP-67.
4		Switch button: red plastic. Shure Brothers RP-25.
5		Spring. Shure Brothers RP-1.
6		Shield. Shure Brothers RP-23.
7		Magnetic controlled cartridge. Shure Brothers RP-13.
8		Case (front) plastic. (Part of item 3).
9		Cable and plug: approx 6 feet long. Shure Brothers RP-14.

*COMPONENTS ADDED, DELETED OR CHANGED BY PRODUCTION CHANGES.



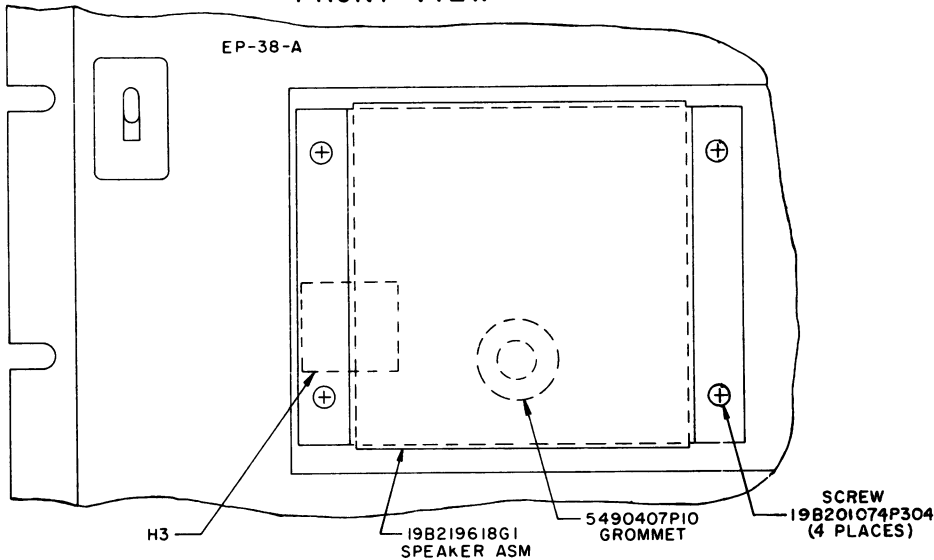
PARTS LIST

LBI-4427
STATION SPEAKER
19B219618G1

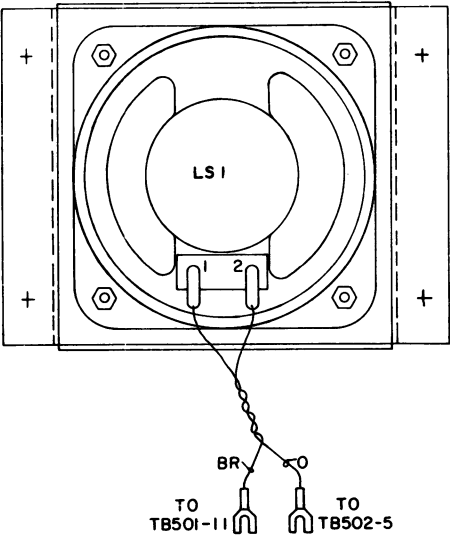
SYMBOL	GE PART NO.	DESCRIPTION
LS1	19A115964P1	----- LOUDSPEAKERS ----- Weatherproof, Permanent Magnet: 3-1/2 inch, 18 ohm $\pm 10\%$ imp at 1000 Hz, 15-19 ohms DC; sim to Oaktron S-9847.
	19B219615P1	----- MISCELLANEOUS ----- Cover.
	19B209260P103	Terminal, solderless: sim to AMP 60495-1.
	5490407P10	Grommet.
	19B201074P304	Tap screw: No. 6-32 x 1/4.

*COMPONENTS ADDED, DELETED OR CHANGED BY PRODUCTION CHANGES

FRONT VIEW



REAR VIEW



(19C320601, Rev. 1)

ORDERING SERVICE PARTS

Each component appearing on the schematic diagram is identified by a symbol number, to simplify locating it in the parts list. Each component is listed by symbol number, followed by its description and GE Part Number.

Service parts may be obtained from Authorized GE Communication Equipment Service Stations or through any GE Radio Communication Equipment Sales Office. When ordering a part, be sure to give:

1. GE Part Number for component
2. Description of part
3. Model number of equipment
4. Revision letter stamped on unit

These instructions do not purport to cover all details or variations in equipment nor to provide for every possible contingency to be met in connection with installation, operation or maintenance.

Should further information be desired, or should particular problems arise which are not covered sufficiently for the purchaser's purposes, contact the nearest Radio Communication Equipment Sales Office of the General Electric Company.

MOBILE RADIO DEPARTMENT
GENERAL ELECTRIC COMPANY • LYNCHBURG, VIRGINIA 24502

GENERAL  ELECTRIC

DF-9032