



INSTRUCTIONS
FOR
PHONE LINE PROTECTOR KIT 19A129427G2
OPTION 9509
DUPLEX PHONE LINE PROTECTOR KIT 19A129427G2
OPTION 9609

(FOR MASTR® II STATIONS)

TABLE OF CONTENTS

Table with 2 columns: Description and Page. Rows include DESCRIPTION (1), INSTALLATION DIAGRAM (2), and PARTS LIST (2).

DESCRIPTION

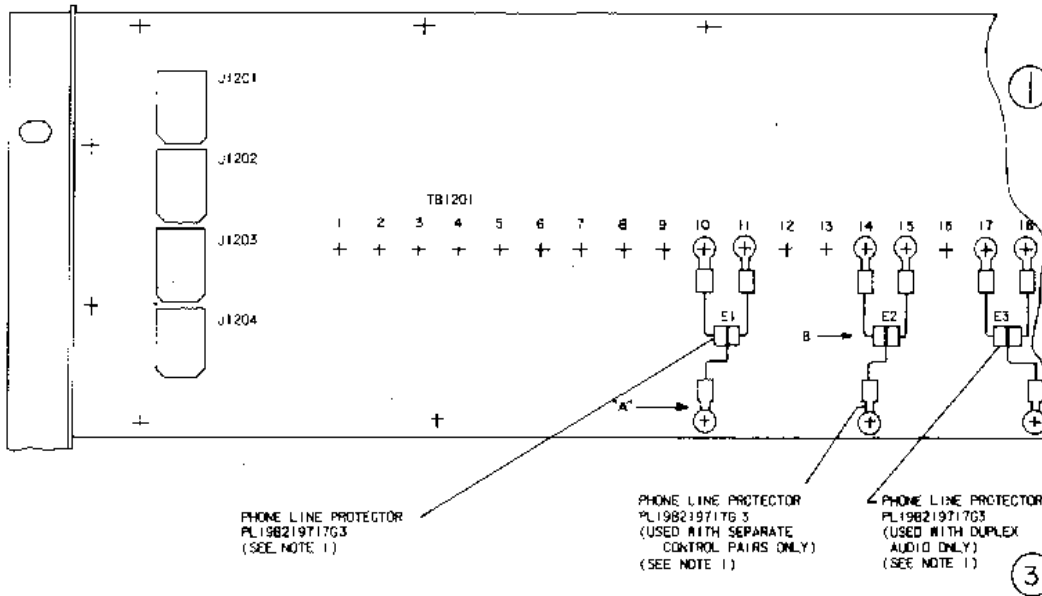
The Phone Line Protector Kit contains a protector that is connected from each side of the telephone line to ground. This protector shunts high voltage or current surges on the telephone line to protect the more costly circuit components inside the station. Two kits are needed if separate Audio and Control Pairs are used.

NOTE

When Phone Line Protectors are used it is imperative that a good earth ground be used such as a single #14 AWG or larger copper conductor connected from the station to a metallic cold water pipe or other suitable ground. Do not use the telephone company's ground strap, use a separate strap for the ground connection. The conductor should be short, straight and a continuous piece of wire. Attention should be given to providing the lowest possible resistance at the connection at each end of the ground wire.



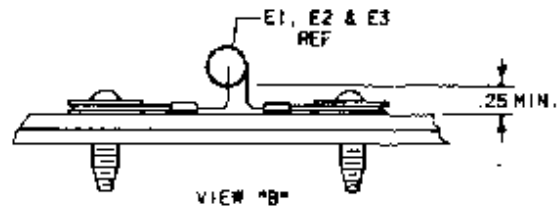
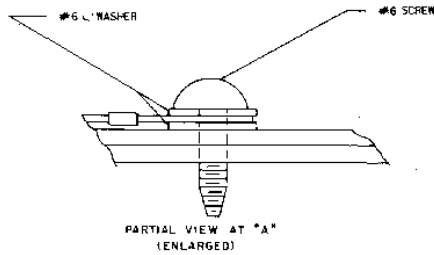
Ericsson GE Mobile Communications Inc.
Mountain View Road • Lynchburg, Virginia 24502



PHONE LINE PROTECTOR
PL19B219717G3
(SEE NOTE 1)

PHONE LINE PROTECTOR
PL19B219717G3
(USED WITH SEPARATE
CONTROL PAIRS ONLY)
(SEE NOTE 1)

PHONE LINE PROTECTOR
PL19B219717G3
(USED WITH DUPLEX
AUDIO ONLY)
(SEE NOTE 1)



THESE INSTRUCTIONS COVER THE INSTALLATION OF THE PHONE LINE SURGE PROTECTION KIT PL19A129427G2 ON THE CONTROL SHELF.

INSTRUCTIONS FOR INSTALLING ONE (PL19A129427G2) PHONE LINE SURGE PROTECTION KIT WHEN USING COMMON AUDIO AND CONTROL PAIR.

1. REMOVE #6 SCREW (THIRD FROM LEFT ON LOWER EDGE OF CONTROL SHELF) AND DISCARD.
2. LOOSEN SCREWS AT TB1201-10&11.
3. INSTALL E1 PHONE LINE PROTECTOR AS SHOWN AND RETIGHTEN SCREWS AT TB1201-10&11.
4. ATTACH CENTER LEAD OF E1 TO SHELF USING #6 X 3/8 SCREW AND LOCK WASHERS ON EACH SIDE OF TERMINAL AS SHOWN IN "VIEW A".

INSTRUCTIONS FOR INSTALLING TWO (PL19A129427G2) PHONE LINE SURGE PROTECTION KITS WHEN USING SEPARATE AUDIO AND CONTROL PAIRS. (2)

1. REMOVE 2 #6 SCREWS (THIRD AND FOURTH FROM LEFT ON LOWER EDGE OF CONTROL SHELF) AND DISCARD.
2. LOOSEN SCREWS AT TB1201-10, 11, 14, 15.
3. INSTALL E1 AND E2 PHONE LINE PROTECTORS AS SHOWN AND RETIGHTEN SCREWS AT TB1201-10, 11, 14, 15.
4. ATTACH CENTER LEAD OF E1 AND E2 TO SHELF USING #6 X 3/8 SCREWS AND LOCK WASHERS AS SHOWN IN "VIEW A".
5. DISCARD EXTRA #6 SCREWS AND LOCK WASHERS.

INSTRUCTIONS FOR INSTALLING TWO (PL19A129427G2) PHONE LINE SURGE PROTECTION KITS WHEN USING SEPARATE (DUPLEX) AUDIO PAIRS.

1. REMOVE 2 #6 SCREWS (THIRD AND FIFTH FROM LEFT ON LOWER EDGE OF CONTROL SHELF) AND DISCARD.
2. LOOSEN SCREWS AT TB1201-10, 11, 17, 18.
3. INSTALL E1 AND E3 PHONE LINE PROTECTORS AS SHOWN AND RETIGHTEN SCREWS AT TB1201-10, 11, 17, 18.
4. ATTACH CENTER LEAD OF E1 AND E3 TO SHELF USING #6 X 3/8 SCREWS AND LOCK WASHERS AS SHOWN IN "VIEW A".
5. DISCARD EXTRA #6 SCREWS AND WASHERS.

NOTES:

1. TERMINALS, LEADS AND BODY OF PHONE LINE PROTECTORS MUST NOT SHORT TO PRINT WIRE BOARD.

PARTS LIST

LBI-4713A
TELEPHONE LINE SURGE PROTECTION KIT
19A129427G2

SYMBOL	GE PART NO.	DESCRIPTION
E1 thru E4	19A134356W1	PROTECTORS Telephone protector: gas filled, 250 350 Vdc breakdown to ground, 700 VDC breakdown line to line; sim to Jozlyn 2022-24.
	19B209268P101	MISCELLANEOUS Terminal, solderless: sim to AMP 42035 1.
	19B201074P306	Tap screw, Phillips PozIDRV: No. 6-32 x 3/8.
	W404P1386	Lockwasher, internal tooth: No. 6.

*COMPONENTS ADDED, DELETED OR CHANGED BY PRODUCTION CHANGES

INSTALLATION DIAGRAM
PHONE LINE SURGE PROTECTION KIT

19A129427G2