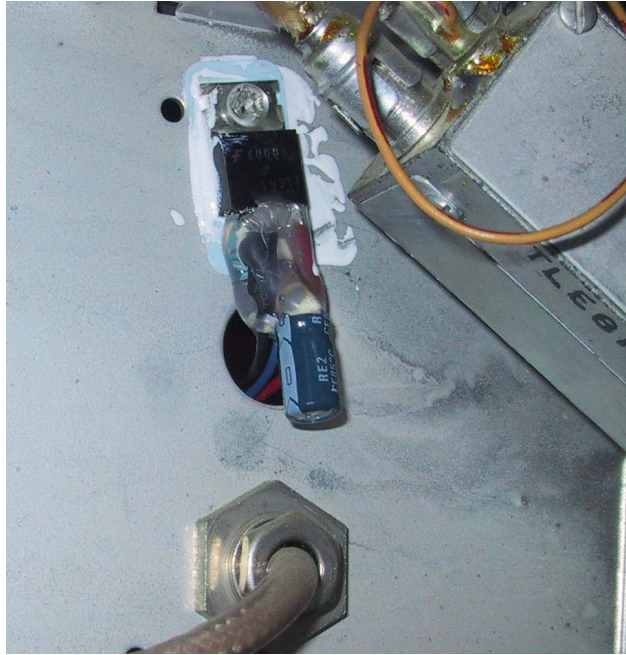


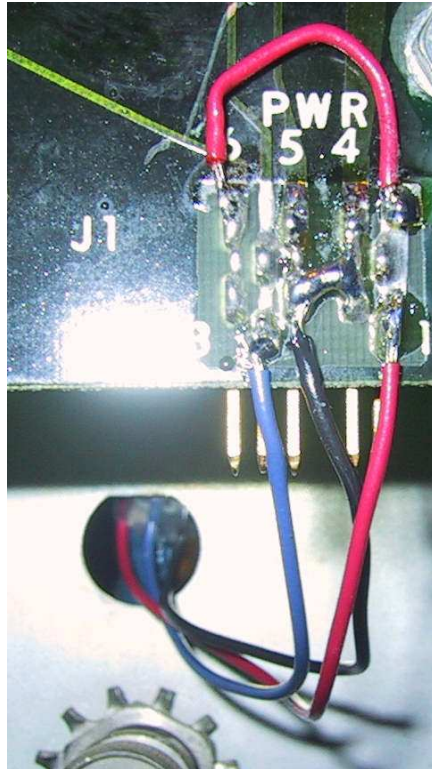
## Micor Power Mods

- Convert a Micor Unified Chassis from 12/9.6V operation to 12V only operation
- Add a LM317 regulator to the chassis to provide the required 9.6V (max 1A)
- Regulator is mounted inside the chassis, behind the Audio and Squelch Board, to the left of the receiver pre-amplifier (if equipped).



- Insulating hardware and thermal washer MUST be used!
- Adjust to Vout resistor is 255ohm; Adjust to GND resistor is 1k69ohm
- 0.1uF bypass cap between Vin and GND; 100uF cap between Vout and GND

-Connect to power connector on rear of chassis



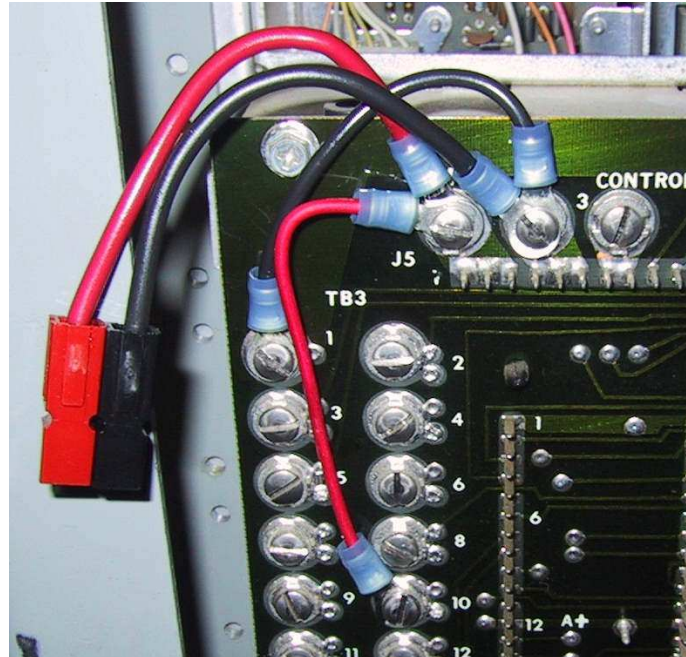
-Jumper Audio A+ (J1-1) to A+ (J1-6) and connect to regulator Vin

-Jumper Audio GND (J1-5) to GND (J1-4) and connect to regulator GND

-Connect regulator Vout to 9.6V (J1-3)

-Jumper TB3-10 to TB2-1 (A+ connections); ensure trace between TB3-10 and A+ pin on rear of chassis exists

-Jumper TB3-1 to TB2-2 (A- connections)



-Supply power to the chassis via the TB2-1 (A+) and TB2-2 (A-) connections