

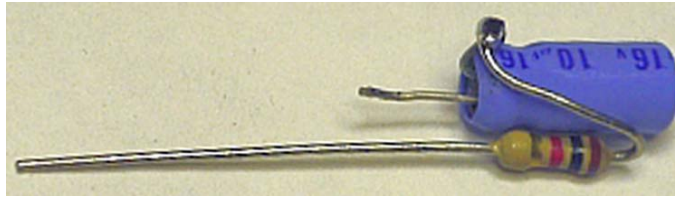
ID-O-Matic II as a Repeater Interface Control Kit for the Motorola Maxtrac, GM300, and CDM series of radios.

The ID-O-Matic II kit is available at www.Hamgadgets.com.

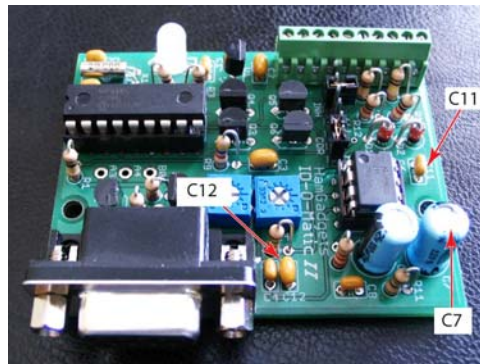
- Parts required:
- 2 10 μ F 16 volt electrolytic capacitor
 - 1 1 k Ω ¼ watt resistor
 - 2 104422-1 AMP AMPMODU MOD IV 16 pin connector housing
 - 9 87523-6 AMP AMPMODU MOD IV pins, fe, standard pressure

ID-O-Matic II circuit board modification instructions.

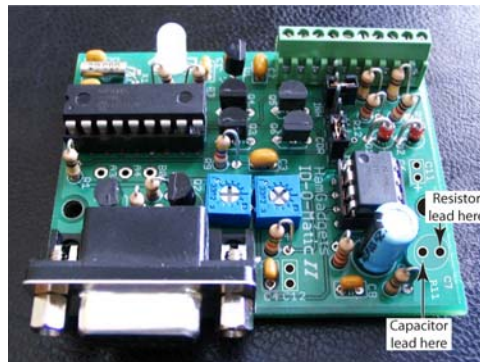
1. Prepare one 10 μ F 16 volt radial lead capacitor with the 1 k Ω resistor in series with the negative lead.



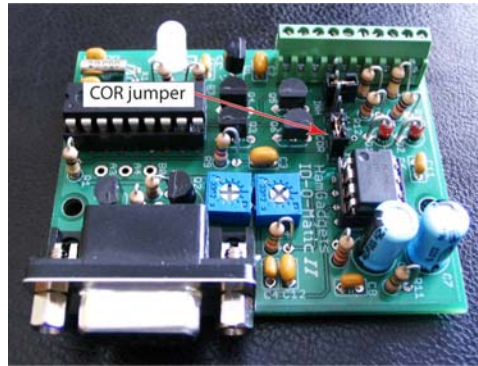
2. Remove C7, C11, and C12 from the ID-O-Matic II board.



3. Install the prepared capacitor/resistor in the C7 location:
 - a. resistor lead in the hole nearest the right edge of the circuit board
 - b. positive capacitor lead in the other hole. (This places a 1K Ω resistor in series with the audio output going to J1 pin 10.)



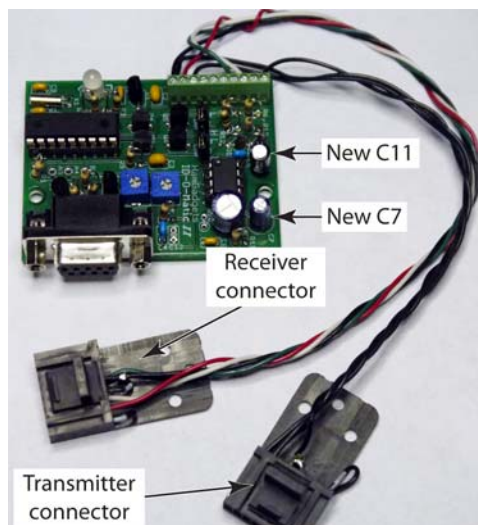
4. Install the second capacitor in the C11 location.
5. Set the COR Jumper to HI.



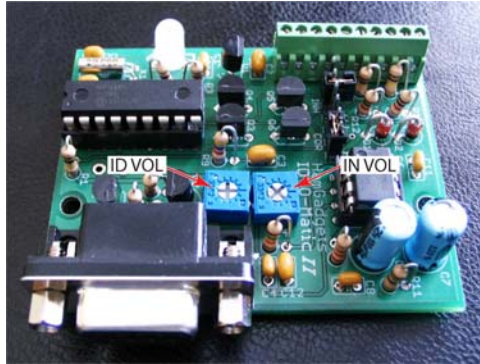
6. Wire up two 16 pin Maxtrac connectors for the RX and TX radios as follows.

Receive radio	Wire color	Function	ID-O-Matic II terminal strip
Pins 7 and 9	BLACK	Ground	1
Pin 8	GREEN	RUS	7
Pin 11	WHITE	RX filtered audio	9
Pin 13	RED	RX switched 12 volts	2

Transmit radio	Wire color	Function	ID-O-Matic II terminal strip
Pin 7 and 9	BLACK	Ground	1
Pin 2	BROWN	Mic Hi	10
Pin 3	GREEN	PTT	3



IN VOL trimmer adjusts the transmit audio level
ID VOL trimmer adjusts the ID audio level



© Echo Communications
Engineering Dept
May 2011