



MOTOROLA INC.
 Communications
 Sector

MSR 2000 BASE STATION SERVICE ACCESSORIES

TRN5080A DC METERING CHASSIS
 TRN5079A SERVICE INTERCOM
 WITH SPEAKER CHASSIS

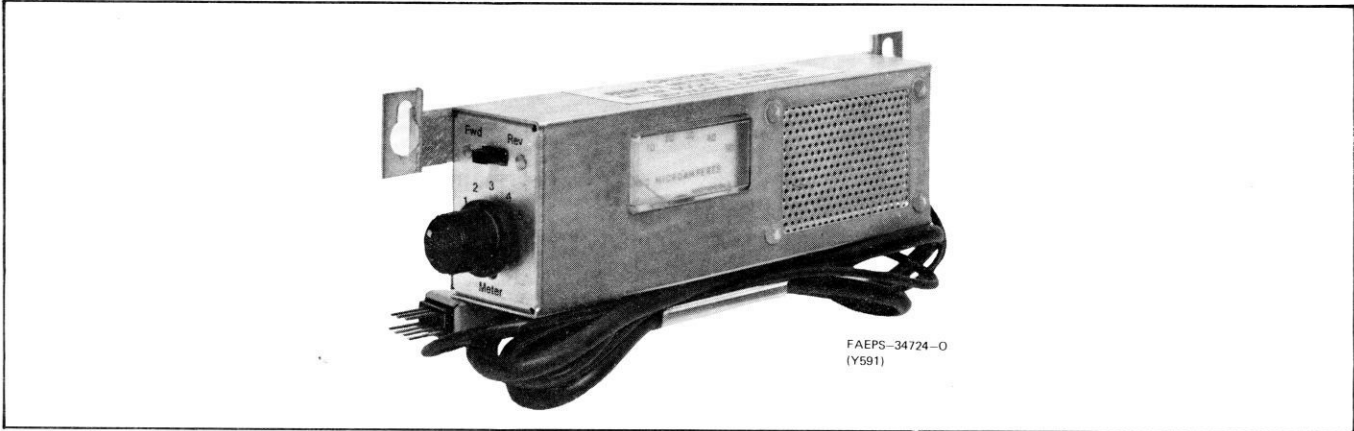


Figure 1. TRN5080A DC Metering Chassis

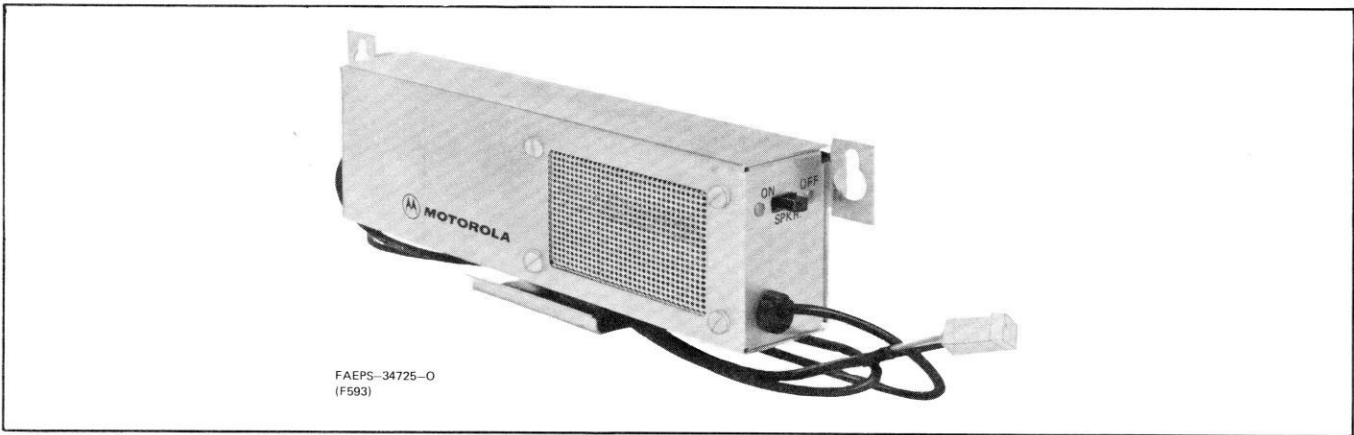


Figure 2. TRN5079A Service Intercom with Speaker Chassis

1. DESCRIPTION

1.1 The TRN5079A Service Intercom with Speaker Chassis provides a local audio speaker for use in troubleshooting the station, and for intercom use when the station is provided with the intercom option. The TRN5080A DC Metering Chassis provides the same local speaker, and in addition, provides most station metering required for normal servicing and maintenance.

1.2 The meter is a 0-50 uA instrument mounted on the dc metering chassis. A selector switch chooses the specific function to be metered. Every function available at the metering receptacle of the exciter, power amplifier/power control board, and receiver board(s) can be selected for metering. The dc metering chassis is equipped with a connection cable terminated with the standard Motorola 7-pin metering connector, which may be connected to the metering connectors provided in the station.

MSR 2000 BASE STATION SERVICE ACCESSORIES

technical writing services

1301 E. Algonquin Road, Schaumburg, Il. 60196

CAUTION

The TRN5080A DC Metering Chassis must not be connected to control metering connector J2 on the backplane interconnect board. (This connector may be labeled either TEST SET MTR or CONTROL MTR, depending on station model.) Damage to the metering circuit will result. The control metering connector is intended for connection to the Motorola TEK-5 Metering Panel or the S1056-59 Portable Test Set only.

2. OPERATING INSTRUCTIONS

2.1 LOCAL SPEAKER

Press the two-conductor speaker connector onto pins 22 and 23 of the receiver 1 audio board position on the back of the station backplane interconnect board. This connection may be left permanently if desired. The speaker is switched on or off as desired, by changing the position of the SPKR-switch.

2.2 METERING

Step 1. Connect the metering connector from the dc metering chassis to the desired metering connector in the station. In the Motorola *MSR 2000* station, exciter and receiver metering connectors are both located on the backplane interconnect board. The power amplifier/power control metering connector is located on the power control board. See Caution.

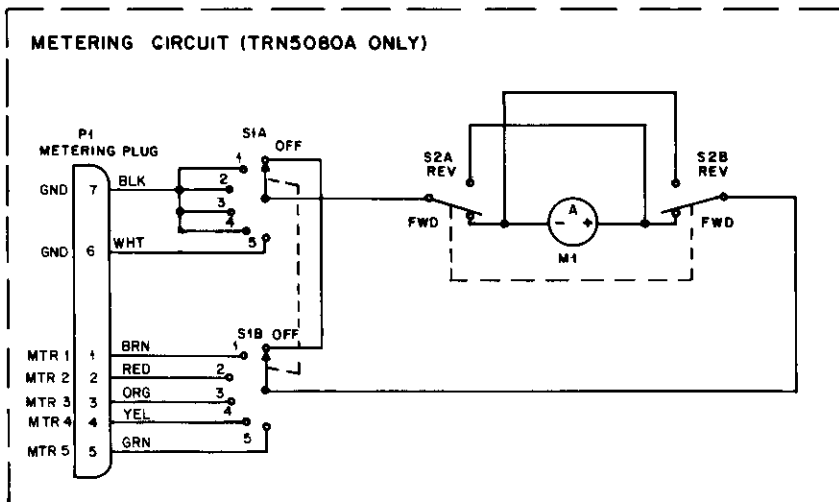
Step 2. Select the meter position required. If the meter deflects in the wrong direction, change the position of the FWD-REV switch.

NOTE

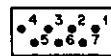
Refer to the Transmitter and Receiver sections of the station manual for typical meter readings. Also, keep a log of all meter readings each time the station is serviced. Use the last set of readings as a reference, note any degradation of performance.

Meter Polarity Switch Position

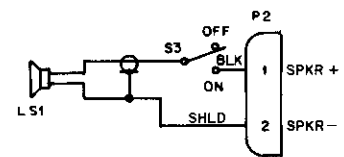
Board Metered	Position
Receiver	FWD
Exciter	REV
PA/Power Control	FWD



P1 DETAIL



SHOWN FROM PIN END



BEPS-34726-0

P2 DETAIL



SHOWN FROM PIN END

parts list

TRN5079A Service Intercom With Speaker Chassis
 TRN5080A DC Metering Chassis

PL-8037-O

REFERENCE SYMBOL	MOTOROLA PART NO.	DESCRIPTION
LS1	50-82913N01	speaker: 8 ohms; 1-3/4 x 3"
M1	72-83319G01	meter: 50 uA (TRN5080A)
P1	28-84208B01	connector, plug: male, 7-contact (TRN5080A) housing; 2-position
P2	15-83498F38	
S1	40-82924N01	switch: rotary (TRN5080A) slide, dpdt
S2, 3	40-83204B01	
mechanical parts		
	3-124616	SCREW, tapping; 6-32 x 1/4"; 2 used
	3-136934	SCREW, tapping; 6-32 x 3/8"; 2 used (TRN5080A)
	15-82927N01	COVER
	35-82928N01	GRILLE
	36-82929N01	KNOB (TRN5080A)
	42-850861	RETAINER, cable (TRN5080A)
	42-82018H07	RETAINER, cable
	29-83499F01	TERMINAL; 2 used
	30-824275	CABLE, shielded; 42" used
	15-82926N01	HOUSING (TRN5080A)
	3-129674	SCREW, machine; 4-40 x 3/16"; 2 used (TRN5080A)
	3-132341	SCREW, machine; 4-36 x 1/4"; 2 used (TRN5080A)
	15-83947K01	COVER; 2 used (TRN5080A)
	30-83678K01	CABLE, 7-conductor; 42" used (TRN5080A)
	42-83948K01	CLIP; 2 used (TRN5080A)
	15-82926N02	HOUSING (TRN5079A)
	5-10281A05	RIVET; 4 used