

Connection Notes

STM32-DVM to ICOM FR-4000 Repeater

Cable Information:

STM32-DVM	Signal	FR4000
1	N/A	
2	→→ TX Audio (Flat / 9600 Baud) →→	9
3	←← DVM Inhibit ←←	N/A
4	←← RSSI ←←	20
5	→→ PTT →→	19
6	←← RX Audio (Discriminator) ←←	12
7	N/A	
8	←← GND →→	21
9	←← 12V →→	13*

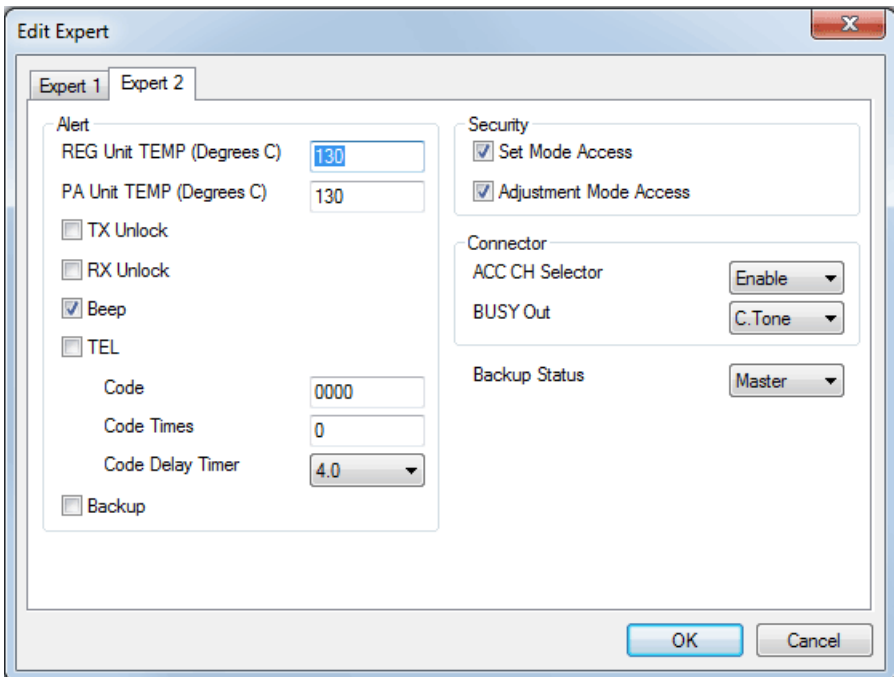
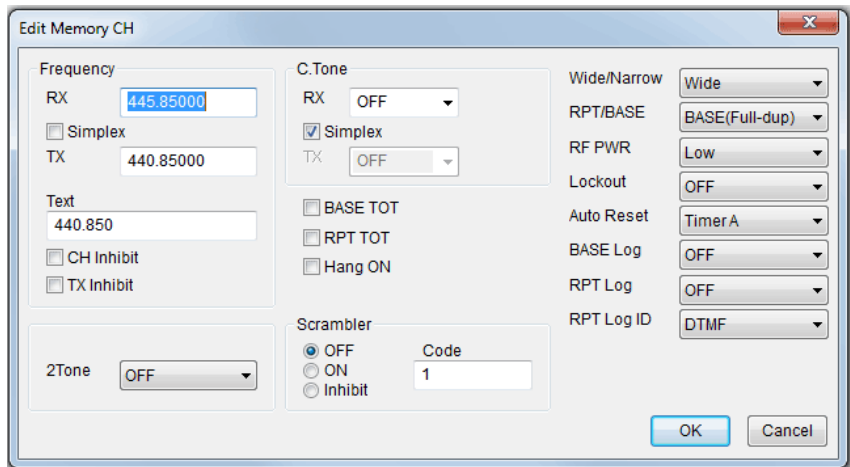
NOTES:

*Pin 13 can used to feed power to the STM32-DVM V3 ONLY if the optional 12v buck converter has been installed.

DO NOT use on pre-version 3 boards!

TXInvert = 0 RXInvert=1

FR4000 Radio Programming:



NOTES:

The **Remote Button** on the IC4000 front panel **must** be 'ON' to allow External PTT

Currently analog revert (in-box repeat) is not available.