

# BASE STATION POWER SUPPLY

## MODEL TPN1136A

### POWER CABLES

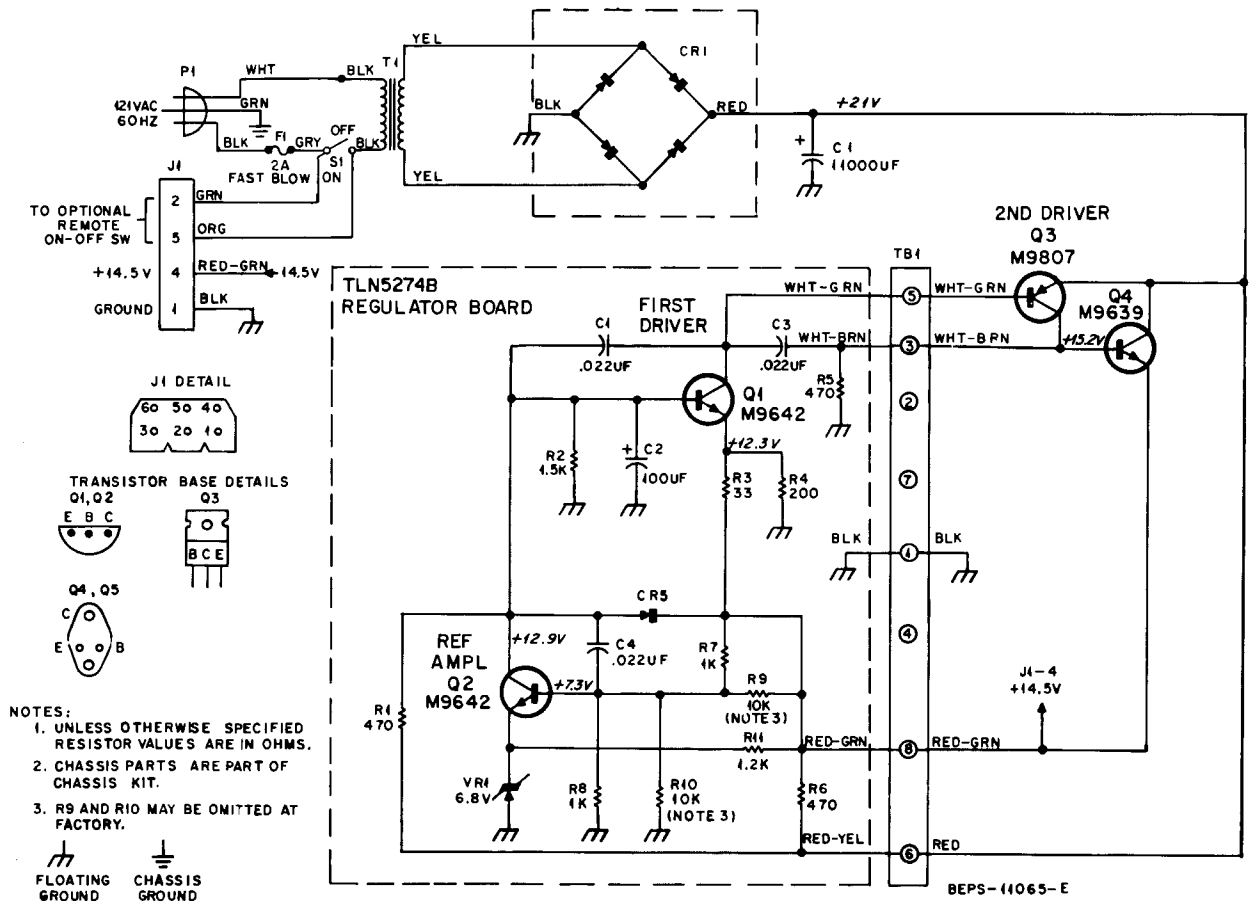
MODELS TKN6948A, TKN6949A, AND TKN8199A

MODEL TABLE

Model	Sub-Model	Description
TPN1136A	TLN5274B	Regulator Board
	TRN6282A	Power Supply Chassis
TKN6948A		Power Cable (Maxar)
TKN6949A		Power Cable (Maxar-80)
TKN8199A		Power Cable (MCX100)

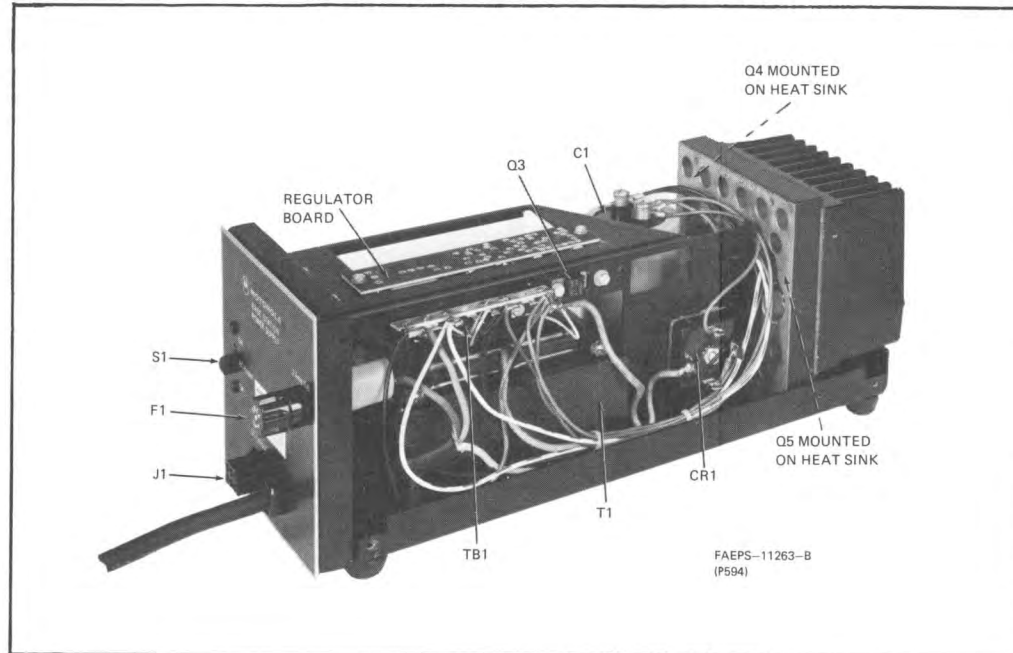
#### FUNCTION

Provides the entire radio with regulated +14.5 V dc when used in a 120 V ac primary power fixed installation.



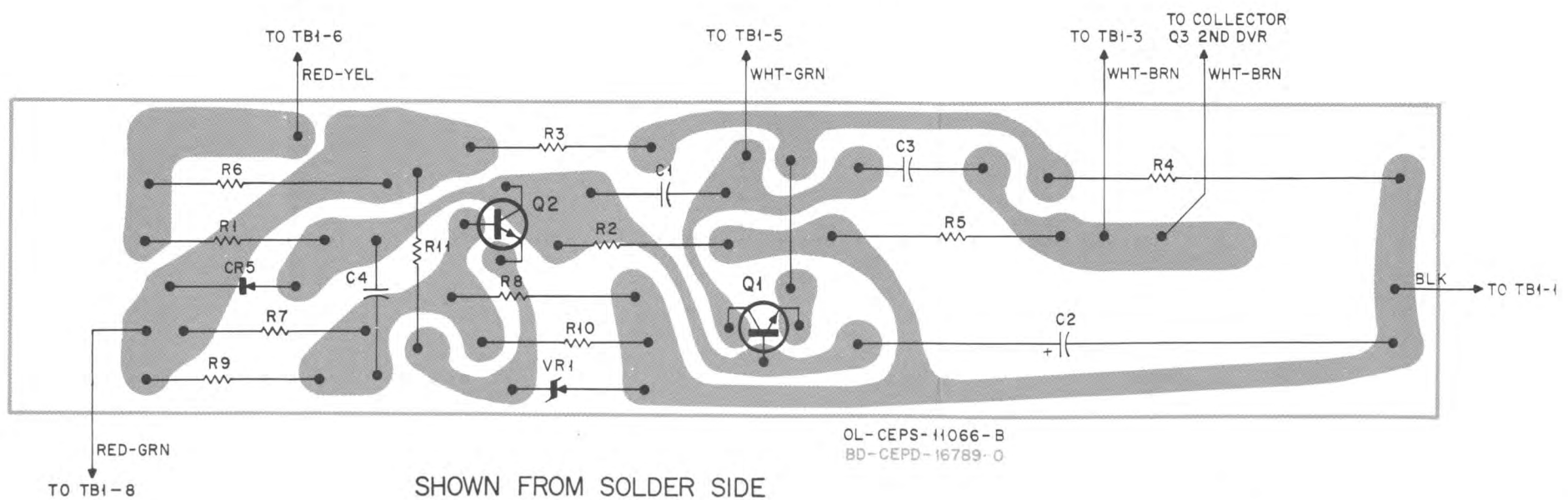
BASE STATION POWER SUPPLY AND POWER CABLES/UNIFIED CHASSIS

## PARTS LOCATION



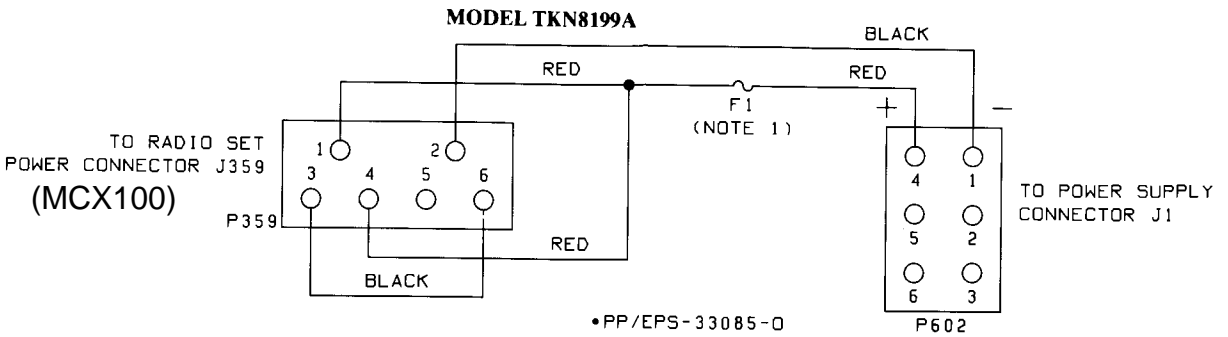
## TPN1136A POWER SUPPLY (MAXAR)

## REGULATOR BOARD DETAIL



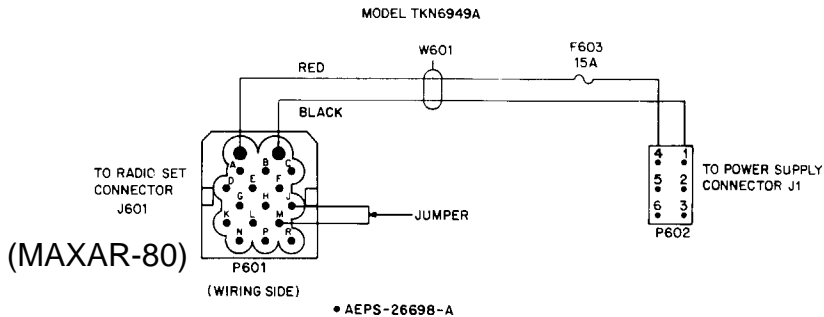
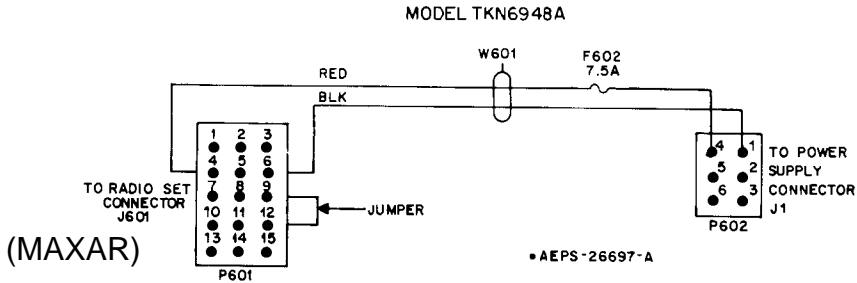
SHOWN FROM SOLDER SIDE

# CABLE DETAILS



**NOTES**

1. F1 IS 6A IN 6/10W MODELS,  
10A IN 25/30W MODELS.
2. CONNECTORS SHOWN FROM WIRE SIDE.



## parts list

TKN6948A Power Cable Kit PL-6084-O

REFERENCE SYMBOL	MOTOROLA PART NO.	DESCRIPTION
F602	65-86099	<b>fuse, cartridge:</b> 7.5 amp; 32 V; type 3AG; fast-blow
P601	15-83293K01 29-84706E05 30-10286A21	<b>connector, plug:</b> includes: INSULATOR, connector; 15-circuit TERMINAL, pin; male; 4 used WIRE, jumper; BLK
P602	15-10183A52 29-82335A01	includes: INSULATOR, connector; 6-circuit TERMINAL, pin; male; 4 used
W601	30-84396L01	<b>cable, power:</b> 2-conductor; (18 ga.); 120" used
XF602	14-82882A01 14-82883A01 41-82885A01 42-82884A01	<b>fuseholder, in-line:</b> includes: BODY, fuseholder CAP, fuseholder SPRING, compression CLIP, fuseholder; 2 used
<b>non-referenced part</b>		
	37-134371	TUBING, heatsink (BLK) 1" length; 2 used

TKN6949A Power Cable Kit PL-6085-A

REFERENCE SYMBOL	MOTOROLA PART NO.	DESCRIPTION
F603	65-4165	<b>fuse, cartridge:</b> 15 amp; 35 V; fast-blow type
P601	15-83958L01 29-82335A01 29-84706E05 30-10286A21	<b>connector, plug:</b> includes: INSULATOR, connector; 17-circuit TERMINAL, pin; male; (large) 2 used TERMINAL, pin; male; (small) 6 used WIRE, jumper; BLK
P602	15-10183A52 29-82335A01	includes: INSULATOR, connector; 6-circuit TERMINAL, pin; male; 4 used
W601	30-84396L02	<b>cable, power:</b> 2-conductor; (14 ga.); 120" used
XF603	14-82882A01 14-82883A01 41-82885A01 42-82884A01	<b>fuseholder, in-line:</b> includes: BODY, fuseholder CAP, fuseholder SPRING, compression CLIP, fuseholder; 2 used
<b>non-referenced part</b>		
	37-134371	TUBING, heatsink (BLK) 1" length; 2 used

TLN5274B Regulator Board PL-5361-C

REFERENCE SYMBOL	MOTOROLA PART NO.	DESCRIPTION
C1	8-82905G02	<b>capacitor, fixed; uF:</b> $\pm 10\%$ ; 50 V; unless otherwise stated
C2	23-83908L01	100 + 75-10%; 25 V
C3, 4	8-82905G02	.022
CR5	48-82392B03	<b>semiconductor device, diode: (see note)</b> silicon
Q1, 2	48-869642	<b>transistor: (see note)</b> NPN; type M9642
R1	6-125A41	<b>resistor, fixed: <math>\pm 5\%</math>; 1/2 W:</b> unless otherwise stated
R2	6-125A53	470
R3	6-125A13	1.5k
R4	17-82177B40	33
R5, 6	6-126C41	200; 5 W
R7, 8	6-125A49	470 $\pm 10\%$ ; 1 W
R9, 10	6-125C73	1k
R11	6-125C51	10k $\pm 10\%$ (note: Use is optional, determined at factory)
VR1	48-83696E01	<b>semiconductor device, diode: (see note)</b> silicon; Zener type: 6.8 V $\pm 5\%$

**note:** Replacement diodes and transistors must be ordered by listed part number only for optimum performance.

## parts list

TRN6282A Power Supply Chassis PL-3349-I

REFERENCE SYMBOL	MOTOROLA PART NO.	DESCRIPTION
C1	23-82464C08	<b>capacitor, fixed:</b> 11,000 uF + 75-10%; 35 V
CR1	48-84571H02	<b>semiconductor device, diode: (see note)</b> Bridge Rectifier Assembly; silicon
J1	15-10183A53 29-82336A01	<b>connector, receptacle:</b> includes: INSULATOR, 6-contact CONTACT, female; 4-req'd. (p/o Model TLN5219A)
F1	65-42092	<b>fuse, cartridge:</b> fast-blow type; 2A
P1	30-83212F01	<b>line cord:</b> includes: ac plug
Q3	48-869807	<b>transistor: (see note)</b> PNP; type M9807
Q4	46-869639	NPN; type M9639
S1	40-84241G04	<b>switch, slide:</b> dpst
T1	25-83594E02	<b>transformer, power:</b> pri: res. 2.75 ohms sec: res 0.11 ohm
TB1	31-121700	<b>terminal strip:</b> 8-terminals: no. 2 & 7 mtg.
XF1	9-82083C01	<b>fuseholder:</b> extractor post type
<b>non-referenced items</b>		

1-80745B56	WIRE & LUG ASSEMBLY, includes:
29-824456	LUG, ring tongue
3-2977	SCREW, machine: 6-32 x 1-1/8"; 4 req'd.
4-7569	WASHER, flat: .145 x .312 x .027"; 4 req'd.
4-7650	WASHER, lock: #6 (split); 2 req'd.
4-84496C01	WASHER, shoulder; 4 req'd.
26-84923B06	HEATSINK
29-5248	LUG, soldering: #6; 2 req'd.
1-80745B57	DIODE BRACKET ASSEMBLY includes:
1-80745B56	WIRE & LUG ASSEMBLY includes:
29-824456	LUG, ring tongue
1-80745B58	WIRE & LUG ASSEMBLY, includes:
29-824456	LUG, ring tongue
1-80745B60	WIRE & LUG ASSEMBLY, includes:
29-824456	LUG, ring tongue
1-80745B61	WIRE & LUG ASSEMBLY, includes:
29-824456	LUG, ring tongue
3-134168	SCREW, tapping: 4-40 x 1/4"; 2 req'd.
3-134268	SCREW, tapping: 4-40 x 7/16"; 2 req'd.
4-114057	WASHER, flat: .125 x .312 x .032"
7-83095F02	BRACKET, circuit board
14-84268A01	INSULATOR, transistor: 520 x .660"
14-84525G01	INSULATOR, transistor (T066 base)
29-5261	LUG, soldering: #6; 2 req'd.
29-5369	LUG, soldering: #4
1-80745B68	HOUSING ASSEMBLY, includes:
13-868710	DECAL, patent
15-83096F02	HOUSING
1-80778B37	CHASSIS ASSEMBLY, includes:
1-80747B60	WIRE & LUG ASSEMBLY, includes:
29-82336A01	CONTACT, female
1-80747B61	WIRE & LUG ASSEMBLY, includes:
29-82336A01	CONTACT, female
1-80747B62	WIRE & LUG ASSEMBLY, includes:
29-82336A01	CONTACT, female
1-80747B63	WIRE & LUG ASSEMBLY, includes:
29-82336A01	CONTACT, female
2-1355	NUT, hex: 8-32 x 5/16 x 1/8"; 4 req'd.
2-7005	NUT, hex: 6-32 x 1/4 x 3/32"; 14 req'd.
2-9627	NUT, hex: 4-40 x 3/16 x 3/32"; 2 req'd.
2-119913	NUT, 8-32 x 11/32"
3-2979	SCREW, machine: 6-32 x 3/8"; 7 req'd.
3-7312	SCREW, machine: 8-32 x 3/4"
3-7348	SCREW, machine: 6-32 x 3/4"
3-139085	SCREW, machine: 4-40 x 5/16"; 2 req'd.

REFERENCE SYMBOL	MOTOROLA PART NO.	DESCRIPTION
	3-490773	SCREW, machine: 6-32 x 9/16"; 4 req'd.
	4-2645	WASHER, lock: #6 (split); 12 req'd.
	4-9746	WASHER, lock: #8 (split); 4 req'd.
	4-114583	WASHER, lock: #4 (split); 2 req'd.
	4-82418B88	WASHER, insulator: .125 x .250 x .010"; 2 req'd.
	13-84639D04	ESCAPCHION
	27-83252N01	CHASSIS
	42-82018H01	RETAINER, cable
	42-83415C01	CLIP, capacitor mounting
	43-82599M01	SPACER, 4 req'd.
	75-84215A02	BUMPER, recessed: 4 req'd.
	3-139854	SCREW, tapping: 6-32 x 3/8"; 6 req'd.
	3-134168	SCREW, tapping: 4-40 x 1/4"; 2 req'd.
	3-139138	SCREW, tapping: 10-32 x 3/8"; 3 req'd.
	33-84035E05	NAMEPLATE, model number
	42-10217A02	STRAP, cable harness; 3 req'd.
	54-84347M01	LABEL, warning
	9-10454A04	CONN. (YELLOW)

**note:** Replacement diodes and transistors must be ordered by listed part number only for optimum performance.

TKN8199A Power Cable Kit PL-7636-O

REFERENCE SYMBOL	MOTOROLA PART NO.	DESCRIPTION
F1	65-10266 or 65-15270	<b>fuse:</b> 10 amp 6 amp
P359	15-84192M01	<b>connector, plug:</b> HOUSING, 6-contact
P602	15-10183A52	HOUSING, 6-contact
<b>mechanical parts</b>		
	1-80737D31	assembly power cable; includes:
	14-82883A01	CAP, fuse holder
	42-82884A01	CLIP, fuse
	29-82335A01	TERMINAL, male
	30-84396L02	CABLE, 2-conductor
	37-134370	TUBING, heatshrink; 3/4" (BLK)
	37-134371	TUBING, heatshrink; 3/8" (BLK)
	9-82845L01	CRIMP, connector
	1-80737D32	ASSEMBLY, red wire and lug; includes:
	9-84151B03	RECEPTACLE, single contact
	1-80737D33	ASSEMBLY, red wire and lug; includes:
	14-82882A01	BODY, fuseholder
	29-82335A01	TERMINAL, male
	41-82885A01	TERMINAL, fuseholder
	42-82884A01	CLIP, fuseholder