

MAINTENANCE MANUAL

DISTRIBUTION PANEL B402

TABLE OF CONTENTS	
	Page
SPECIFICATIONS	Front Page
DESCRIPTION	1
PARTS LIST	1
FRAME ASSEMBLY DIAGRAM	2
OUTLINE DIAGRAM	2
SCHEMATIC DIAGRAM	3
INTERCONNECTION DIAGRAMS	4
Audio Distribution/MUX Rack VF & PTT	4
Audio Distribution/MUX Rack Data, Clock & A/D	5

SPECIFICATIONS

Connectors

J1-J6	50 Pin Header
J7&J8	50 Pin Telco, Fork Connector



Ericsson Inc.
Private Radio Systems
Mountain View Road
Lynchburg, Virginia 24502
1-800-592-7711 (Outside USA, 804-592-7711)

DESCRIPTION

Distribution Panel B402 mounts in the rear of the Control Point Audio Distribution/MUX Rack (*See Figure*). This distribution panel consists of frame assembly 19D903881P2 and four (4) Distribution Modules M1 - M4 (*ROA 117 2264*). These Distribution Modules (M1-M4) consist of eight (8) connectors J1-J8. Connectors J1 - J6 are 50 pin headers and are used to distribute signals. Connectors J7 & J8 are 50 pin Telco connectors and are used to collect signals and “daisy chain” signals to the next rack. All pins with the same number for all connectors are connected together.

Distribution Module M1 collects A/D IN (*Analog/Digital*) on connector J7 and distributes this signal from connectors J1-J6 to connector P2 on MUX shelves TRI1 - TRI6 respectively. Refer to the Interconnection Diagram for Audio Distribution/MUX Rack Data, Clock & A/D. *19C852726, Sheet 2*).

Distribution Module M2 collects TXD IN (*data*) on connector J7 and distributes this signal from connectors J1-J6 through jackfields D601 - D606 to connector P6 on MUX shelves TRI1 - TRI6 respectively. TXD IN is “daisy chained” to other racks through M2, J8.

Distribution Module M3 collects TXC IN (*clock*) on connector J7 and distributes this signal from J1-J6 through jackfields D601 - D606 to connector P7 on MUX shelves TRI1 - TRI6 respectively. TXC IN is “daisy chained” to other racks through M3, J8.

Distribution Module M4 collects TXV IN (*audio*) on connector J7 and forwards this signal from connector J1 to connector J7 on Audio distribution Shelf A401. TXVIN is “daisy chained” to other racks through M4, J8. Refer to the Interconnection Diagram for the Audio Distribution/MUX Rack VF & PTT (*19C852726, Sheet 1*).

NOTE

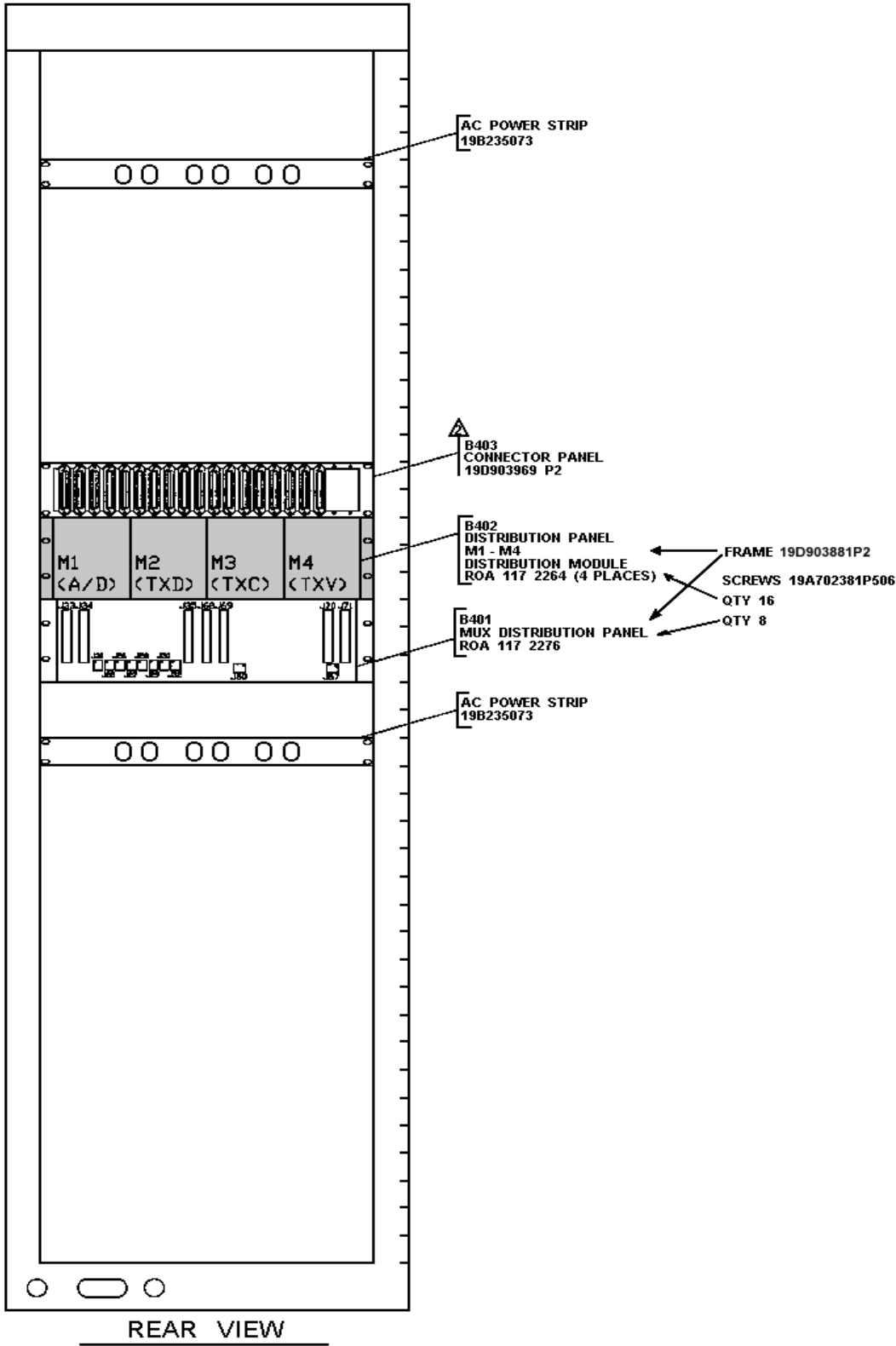
Repairs to this equipment should be made only by an authorized service technician or facility designated by the supplier. Any repairs, alterations or substitution of recommended parts made by the user to this equipment not approved by the manufacturer could void the user’s authority to operate the equipment in addition to the manufacturer’s warranty.

NOTICE!

The software contained in this device is copyrighted by Ericsson Inc. Unpublished rights are reserved under the copyright laws of the United States.

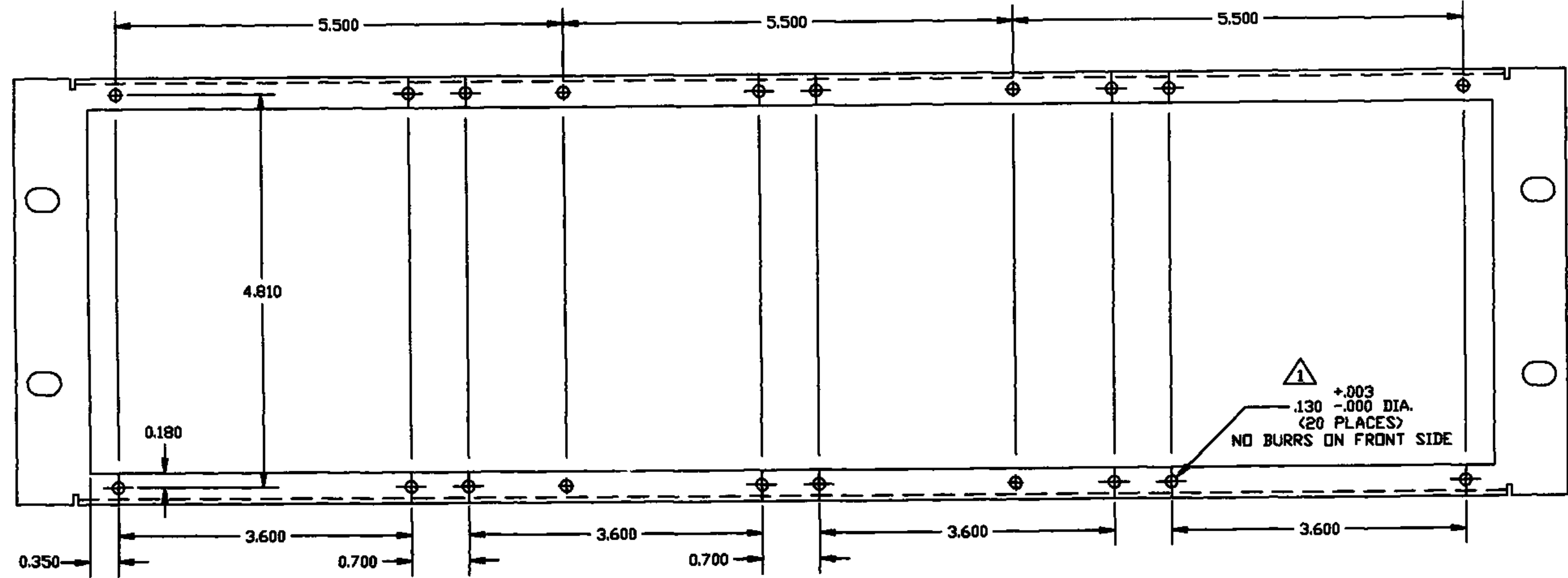
PARTS LIST
DISTRIBUTION PANEL B402

SYMBOL	PART NO.	DESCRIPTION
		DISTRIBUTION MODULE ROA 117 2264 ----CONNECTORS----
J1 thru J6	RPV 403 148/050	50 Pin Header
J7 and J8	RNV 403 845/050	50 Pin Telco, Fork Contact Unit
		--- MISCELLANEOUS ---
2	RPV 403 143/901	Locking Spring (Used with J1 thru J6)
	19D903881P2	Frame Assembly
	19A702381P506	Mounting screws



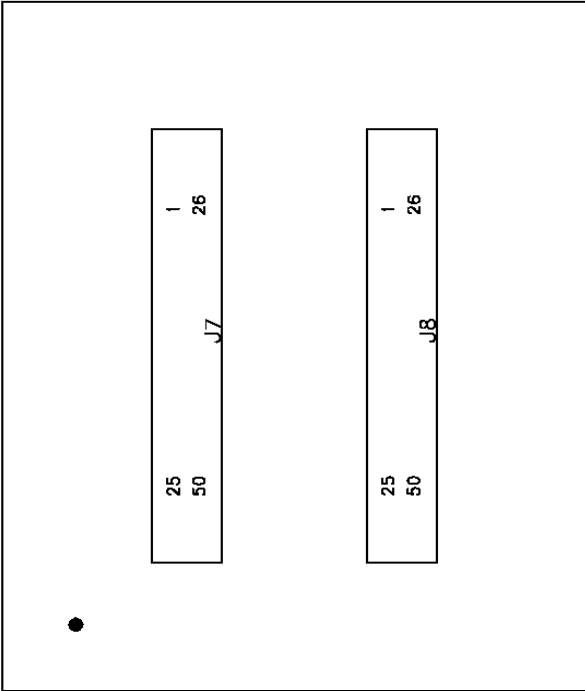
Control Point Audio Distribution/MUX Rack

This manual is published by **Ericsson Inc.**, without any warranty. Improvements and changes to this manual necessitated by typographical errors, inaccuracies of current information, or improvements to programs and/or equipment, may be made by **Ericsson Inc.**, at any time and without notice. Such changes will be incorporated into new editions of this manual. No part of this manual may be reproduced or transmitted in any form or by any means, electronic or mechanical, including photocopying and recording, for any purpose, without the express written permission of **Ericsson Inc.**

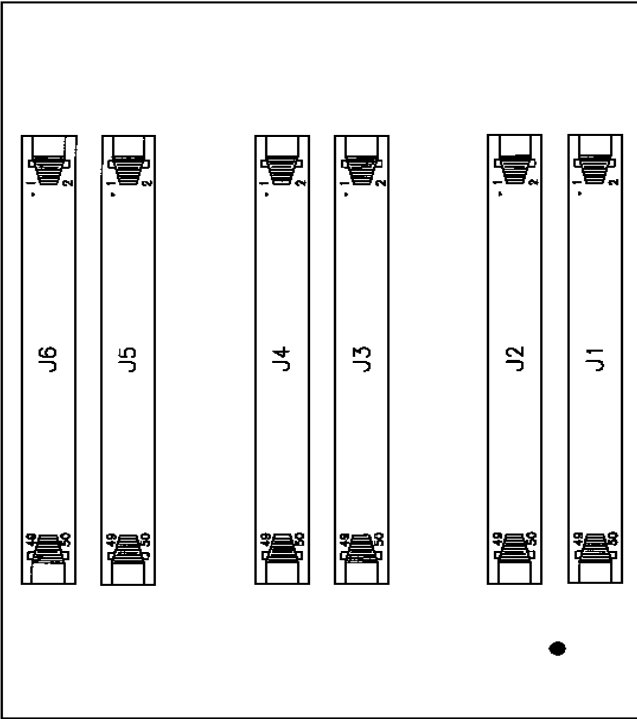


Frame Assembly

(19D903881, Rev. 1)



PRIMARY SIDE



SECONDARY SIDE

Distribution Module

(1078-ROA 117 2264, Sheet 1, Rev. A)

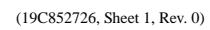
Distribution Module

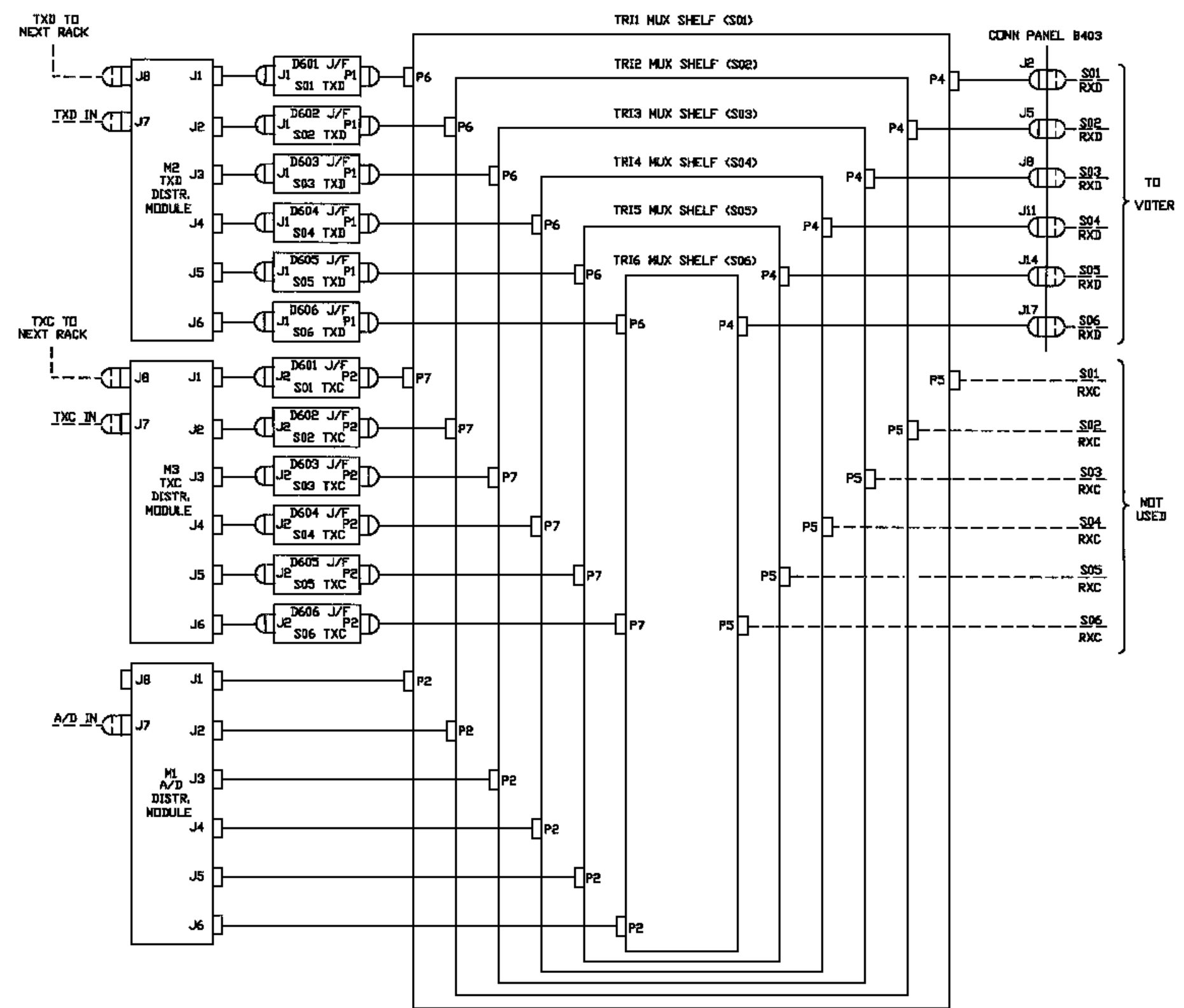
(1078-ROA 117 2264, Sheet 2, Rev. A)

J1 1	1	J2 1	1	J3 1	1	J4 1	1	J5 1	1	J6 1	1	J7 1	1	J8 1	1
J1 2	2	J2 2	2	J3 2	2	J4 2	2	J5 2	2	J6 2	2	J7 2	2	J8 2	2
J1 3	3	J2 3	3	J3 3	3	J4 3	3	J5 3	3	J6 3	3	J7 3	3	J8 3	3
J1 4	4	J2 4	4	J3 4	4	J4 4	4	J5 4	4	J6 4	4	J7 4	4	J8 4	4
J1 5	5	J2 5	5	J3 5	5	J4 5	5	J5 5	5	J6 5	5	J7 5	5	J8 5	5
J1 6	6	J2 6	6	J3 6	6	J4 6	6	J5 6	6	J6 6	6	J7 6	6	J8 6	6
J1 7	7	J2 7	7	J3 7	7	J4 7	7	J5 7	7	J6 7	7	J7 7	7	J8 7	7
J1 8	8	J2 8	8	J3 8	8	J4 8	8	J5 8	8	J6 8	8	J7 8	8	J8 8	8
J1 9	9	J2 9	9	J3 9	9	J4 9	9	J5 9	9	J6 9	9	J7 9	9	J8 9	9
J1 10	10	J2 10	10	J3 10	10	J4 10	10	J5 10	10	J6 10	10	J7 10	10	J8 10	10
J1 11	11	J2 11	11	J3 11	11	J4 11	11	J5 11	11	J6 11	11	J7 11	11	J8 11	11
J1 12	12	J2 12	12	J3 12	12	J4 12	12	J5 12	12	J6 12	12	J7 12	12	J8 12	12
J1 13	13	J2 13	13	J3 13	13	J4 13	13	J5 13	13	J6 13	13	J7 13	13	J8 13	13
J1 14	14	J2 14	14	J3 14	14	J4 14	14	J5 14	14	J6 14	14	J7 14	14	J8 14	14
J1 15	15	J2 15	15	J3 15	15	J4 15	15	J5 15	15	J6 15	15	J7 15	15	J8 15	15
J1 16	16	J2 16	16	J3 16	16	J4 16	16	J5 16	16	J6 16	16	J7 16	16	J8 16	16
J1 17	17	J2 17	17	J3 17	17	J4 17	17	J5 17	17	J6 17	17	J7 17	17	J8 17	17
J1 18	18	J2 18	18	J3 18	18	J4 18	18	J5 18	18	J6 18	18	J7 18	18	J8 18	18
J1 19	19	J2 19	19	J3 19	19	J4 19	19	J5 19	19	J6 19	19	J7 19	19	J8 19	19
J1 20	20	J2 20	20	J3 20	20	J4 20	20	J5 20	20	J6 20	20	J7 20	20	J8 20	20
J1 21	21	J2 21	21	J3 21	21	J4 21	21	J5 21	21	J6 21	21	J7 21	21	J8 21	21
J1 22	22	J2 22	22	J3 22	22	J4 22	22	J5 22	22	J6 22	22	J7 22	22	J8 22	22
J1 23	23	J2 23	23	J3 23	23	J4 23	23	J5 23	23	J6 23	23	J7 23	23	J8 23	23
J1 24	24	J2 24	24	J3 24	24	J4 24	24	J5 24	24	J6 24	24	J7 24	24	J8 24	24
J1 25	25	J2 25	25	J3 25	25	J4 25	25	J5 25	25	J6 25	25	J7 25	25	J8 25	25
J1 26	26	J2 26	26	J3 26	26	J4 26	26	J5 26	26	J6 26	26	J7 26	26	J8 26	26
J1 27	27	J2 27	27	J3 27	27	J4 27	27	J5 27	27	J6 27	27	J7 27	27	J8 27	27
J1 28	28	J2 28	28	J3 28	28	J4 28	28	J5 28	28	J6 28	28	J7 28	28	J8 28	28
J1 29	29	J2 29	29	J3 29	29	J4 29	29	J5 29	29	J6 29	29	J7 29	29	J8 29	29
J1 30	30	J2 30	30	J3 30	30	J4 30	30	J5 30	30	J6 30	30	J7 30	30	J8 30	30
J1 31	31	J2 31	31	J3 31	31	J4 31	31	J5 31	31	J6 31	31	J7 31	31	J8 31	31
J1 32	32	J2 32	32	J3 32	32	J4 32	32	J5 32	32	J6 32	32	J7 32	32	J8 32	32
J1 33	33	J2 33	33	J3 33	33	J4 33	33	J5 33	33	J6 33	33	J7 33	33	J8 33	33
J1 34	34	J2 34	34	J3 34	34	J4 34	34	J5 34	34	J6 34	34	J7 34	34	J8 34	34
J1 35	35	J2 35	35	J3 35	35	J4 35	35	J5 35	35	J6 35	35	J7 35	35	J8 35	35
J1 36	36	J2 36	36	J3 36	36	J4 36	36	J5 36	36	J6 36	36	J7 36	36	J8 36	36
J1 37	37	J2 37	37	J3 37	37	J4 37	37	J5 37	37	J6 37	37	J7 37	37	J8 37	37
J1 38	38	J2 38	38	J3 38	38	J4 38	38	J5 38	38	J6 38	38	J7 38	38	J8 38	38
J1 39	39	J2 39	39	J3 39	39	J4 39	39	J5 39	39	J6 39	39	J7 39	39	J8 39	39
J1 40	40	J2 40	40	J3 40	40	J4 40	40	J5 40	40	J6 40	40	J7 40	40	J8 40	40
J1 41	41	J2 41	41	J3 41	41	J4 41	41	J5 41	41	J6 41	41	J7 41	41	J8 41	41
J1 42	42	J2 42	42	J3 42	42	J4 42	42	J5 42	42	J6 42	42	J7 42	42	J8 42	42
J1 43	43	J2 43	43	J3 43	43	J4 43	43	J5 43	43	J6 43	43	J7 43	43	J8 43	43
J1 44	44	J2 44	44	J3 44	44	J4 44	44	J5 44	44	J6 44	44	J7 44	44	J8 44	44
J1 45	45	J2 45	45	J3 45	45	J4 45	45	J5 45	45	J6 45	45	J7 45	45	J8 45	45
J1 46	46	J2 46	46	J3 46	46	J4 46	46	J5 46	46	J6 46	46	J7 46	46	J8 46	46
J1 47	47	J2 47	47	J3 47	47	J4 47	47	J5 47	47	J6 47	47	J7 47	47	J8 47	47
J1 48	48	J2 48	48	J3 48	48	J4 48	48	J5 48	48	J6 48	48	J7 48	48	J8 48	48
J1 49	49	J2 49	49	J3 49	49	J4 49	49	J5 49	49	J6 49	49	J7 49	49	J8 49	49
J1 50	50	J2 50	50	J3 50	50	J4 50	50	J5 50	50	J6 50	50	J7 50	50	J8 50	50

Distribution Module

(1911-ROA 117 2264, Rev. A)





Audio Distribution/MUX Rack Data, Clock & A/D

(19C852726, Sheet 2, Rev. 0)