

MAINTENANCE MANUAL  
406-512 MHz OSCILLATOR/MULTIPLIER BOARD  
19D423266G1-G10

TABLE OF CONTENTS

	Page
DESCRIPTION . . . . .	Front Cover
CIRCUIT ANALYSIS . . . . .	Front Cover
OUTLINE DIAGRAM . . . . .	2
SCHEMATIC DIAGRAM . . . . .	3
PARTS LIST AND PRODUCTION CHANGES . . . . .	4

DESCRIPTION

The MASTR® II oscillator-multiplier (Osc/Mult) can be equipped with up to eight Integrated Circuit Oscillator Modules (ICOMs). The ICOM crystal frequencies range from approximately 14.5 to 18.5 megahertz, and the crystal frequency is multiplied 27 times and then amplified to provide a low side injection frequency to the mixer. Optional ICOMs are available for high side injection.

In receivers equipped with a Dual Front End (DFE), a second Osc/Mult board is used. A total of eight ICOMs can be used between the two Osc/Mult boards.

CIRCUIT ANALYSIS

ICOMs

Three different types of ICOMs are available for use in the Osc/Mult module. Each contains a crystal-controlled Colpitts oscillator, and two of the ICOMs contain compensator ICs. The different ICOMs are:

- 5C-ICOM - contains an oscillator and a 5 part-per-million ( $\pm 0.0005\%$ ) compensator IC. Provides compensation for EC-ICOMs.
- EC-ICOM - contains an oscillator only. Requires external compensation from a 5C-ICOM.
- 2C ICOM - contains an oscillator and a 2 PPM ( $\pm 0.0002\%$ ) compensator IC. Will not provide compensation for an EC-ICOM.

The ICOMs are enclosed in an RF shielded can with the type ICOM (5C-ICOM, EC-ICOM or 2C-ICOM) printed on the top of the can. Access to the oscillator trimmer is obtained through a hole on top of the can.

Frequency selection is accomplished by switching the ICOM keying lead (terminal 6) to A- by using the frequency selector switch on the control unit. In single frequency radios, a jumper from H9 to H10 in the control unit connects terminal 6 of the ICOM to A-.

In DFE applications, keying leads of the receiver and the DFE Osc/Mult ICOMs are operated in parallel. Therefore, ICOMs in the receiver can not be placed in the same position as those in the DFE.

In the receive mode, +10 Volts is applied to the external ICOM load resistor (R401) by the RX Osc control line, keeping the selected ICOM turned on. Keying the transmitter removes the 10 Volts at R401, turning the ICOM off.

In standard 5 PPM radios using EC-ICOMs, at least one 5C-ICOM must be used. The 5C-ICOM is normally used in the receiver F1 position, but can be used in any transmit or receive position. One 5C-ICOM can provide compensation for up to 15 EC-ICOMs in the transmitter and receiver. Should the 5C-ICOM compensator fail in the open mode, the EC-ICOMs will still maintain 2 PPM frequency stability from 0°C to 55°C (+32°F to 131°F) due to the regulated compensation voltage (+5 Volts) from the 10-Volt regulator IC. If desired, up to 16 5C-ICOMs may be used in the radio.

CAUTION

All ICOMs are individually compensated at the factory and cannot be repaired in the field. Any attempt to repair or change an ICOM frequency will void the warranty.

The 2C-ICOMs are self-compensated to 2 PPM and can not provide compensation for EC-ICOMs.

When a DFE is used with a wide spaced transmitter option, compensation voltage for the 5C-ICOMs is supplied from the EC-ICOM. Should the 5C-ICOM fail, the EC-ICOMs will still maintain 2 ppm frequency stability from 0°C to 55°C (32°F to 131°F) due to the regulated compensation voltage.

## Oscillator Circuit

The quartz crystals used in ICOMs exhibit the traditional "S" curve characteristics of output frequency versus operating temperature.

At both the coldest and the hottest temperatures, the frequency increases with increasing temperature. In the middle temperature range (approximately 0°C to +55°C), frequency decreases with increasing temperature.

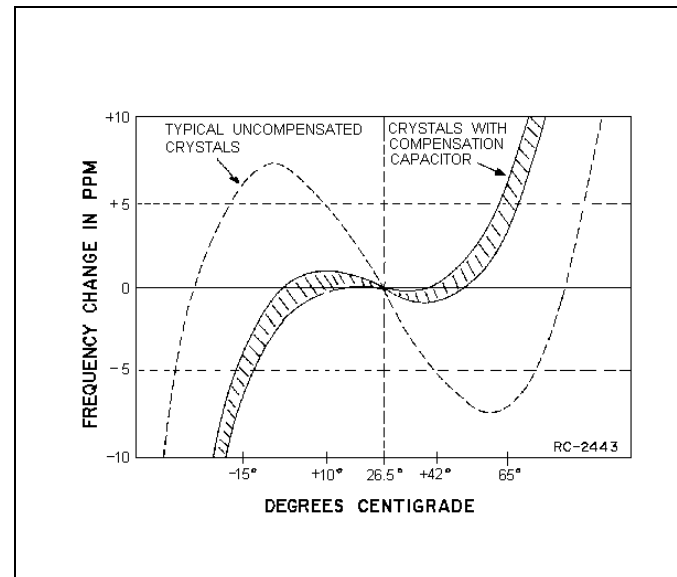


Figure 1 - Typical Crystal Characteristics

Since the rate of change is nearly linear over the mid-temperature range the output frequency change can be compensated by choosing a parallel compensation capacitor with a temperature coefficient approximately equal and opposite that of the crystal.

Figure 1 shows the typical performance of an uncompensated crystal as well as the typical performance of a crystal which has been matched with a properly chosen compensation capacitor.

At temperatures above and below the mid-range, additional compensation must be introduced. An externally generated compensation voltage is applied to a varactor (voltage-variable capacitor) which is parallel with the crystal.

A constant bias of 5 Volts (provided from Regulator IC U901 in parallel with the compensator) establishes the varactor capacity at a constant value over the entire mid-temperature range. With no additional compensation, all of the oscillators will provide 2 PPM frequency stability from 0°C to 55°C (+30°F to 131°F).

## Compensator Circuits

Both the 5C-ICOMs and 2C-ICOMs are temperature compensated at both ends of the temperature range to provide instant frequency compensation. An equivalent ICOM circuit is shown in Figure 2.

The cold end compensation circuit does not operate at temperatures above 0°C. When the temperature drops below 0°C, the circuit is activated. As the temperature decreases, the equivalent resistance decreases and the compensation voltage increases.

The increase in compensation voltage decreases the capacity of the varactor in the oscillator, increasing the output frequency of the ICOM.

The hot end compensation circuit does not operate at temperatures below +55°C. When the temperature rises above +55°C, the circuit is activated. As the temperature increases, the equivalent resistance decreases and the compensation voltage decreases. The decrease in compensation voltage increases the capacity of the varactor, decreasing the output frequency of the ICOM.

**Service Note:** Proper ICOM operation is dependent on the closely-controlled input voltages from the 10-Volt regulator. Should all of the ICOMs shift off frequency, check the 10-Volt regulator module.

## MULTIPLIERS & AMPLIFIER

The output of the selected ICOM is coupled through a tuned circuit (L401 and C406) that is tuned to three times the crystal frequency. The output of the tuned circuit is applied to the base of Class C multiplier Q401. The collector tank circuit of the multiplier (L402, C411 and C412) is tuned to nine times the crystal frequency. The output of the multiplier stage is metered through a metering network consisting of C427 and L405, and applied to receiver metering jack J601 through P903-14.

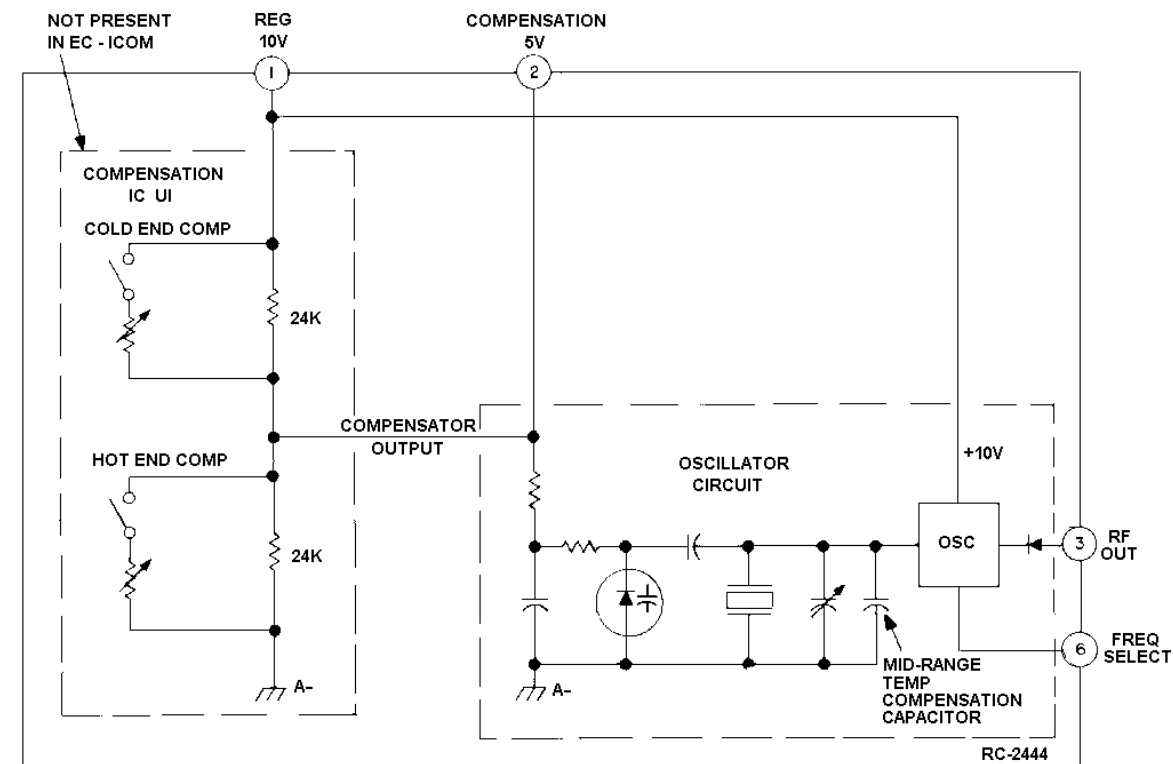


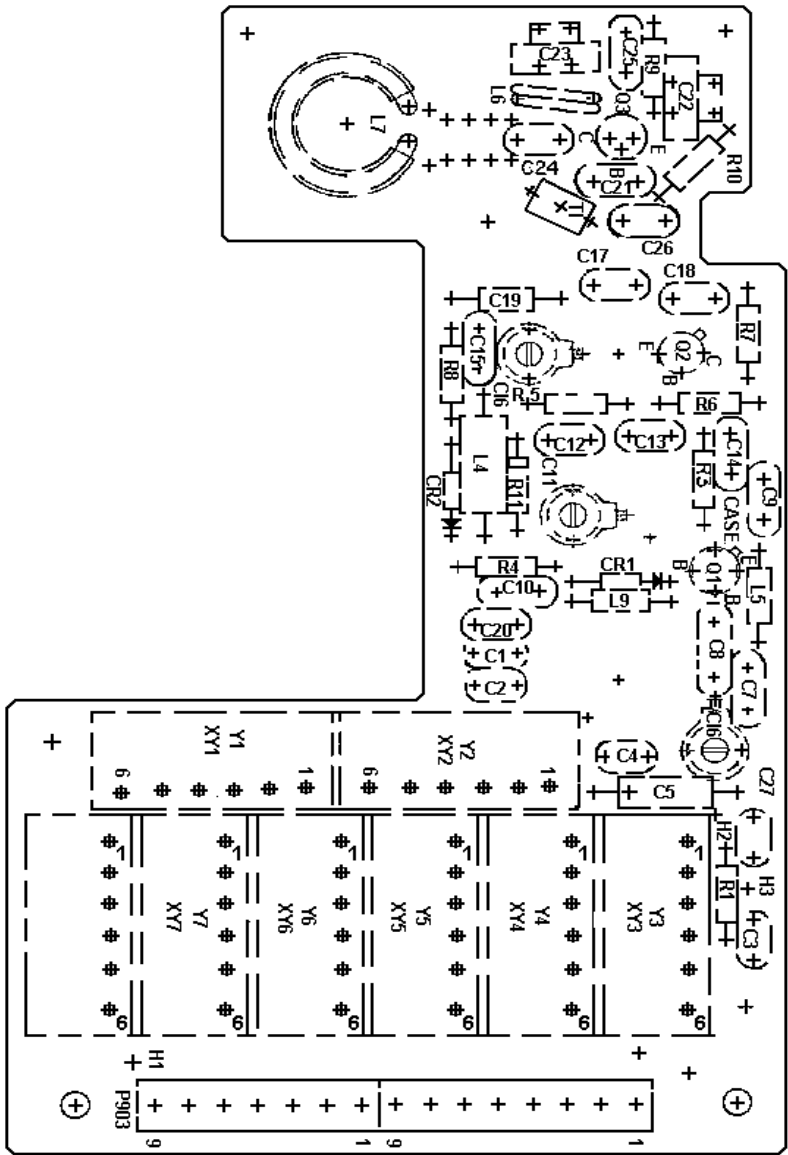
Figure 2 - Equivalent ICOM Circuit

Following the multiplier is a Class A Amplifier stage, Q402. The output of Q402 is metered through a metering network consisting of C419, C420, CR402 and R408 and applied to receiver metering jack J601 through P903-15. The amplified output of Q402 is applied to a tuned circuit (L403, C416 and C417) that is tuned to nine times the crystal frequency. The tuned circuit provides some selectivity in the oscillator-multiplier chain.

The amplifier output is applied to the base of Class C multiplier Q403 through a matching network (T401 and C426). The output of Q403 is inductively coupled to the first of three helical resonators on the RF Assembly through L407. The helicals are tuned to 27 times the crystal frequency.

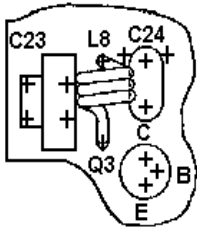
Most of the selectivity for the oscillator-multiplier chain is provided by the three high-Q helicals. The output of the helicals is applied to the input of the mixer stage on the RF Amplifier assembly.

The multiplier output is metered at J605-7 through a metering network on the IF-Filter board. The metering network consists of L505, L506, C512, C513, C514, CR501 and R506.

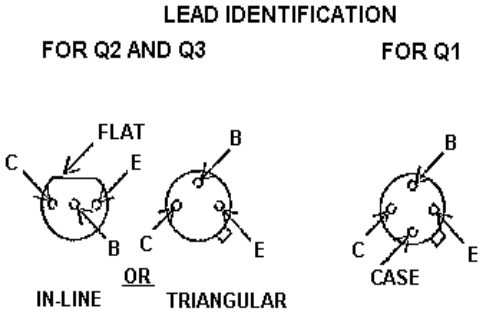


(19D90423790, Rev. 7)

NOTE:  
PARTIAL REFERENCE DESIGNATIONS ARE SHOWN, FOR COMPLETE DESIGNATIONS, PREFIX WITH 400 SERIES.  
EXAMPLE: C1-C401, R1-R401, ETC...

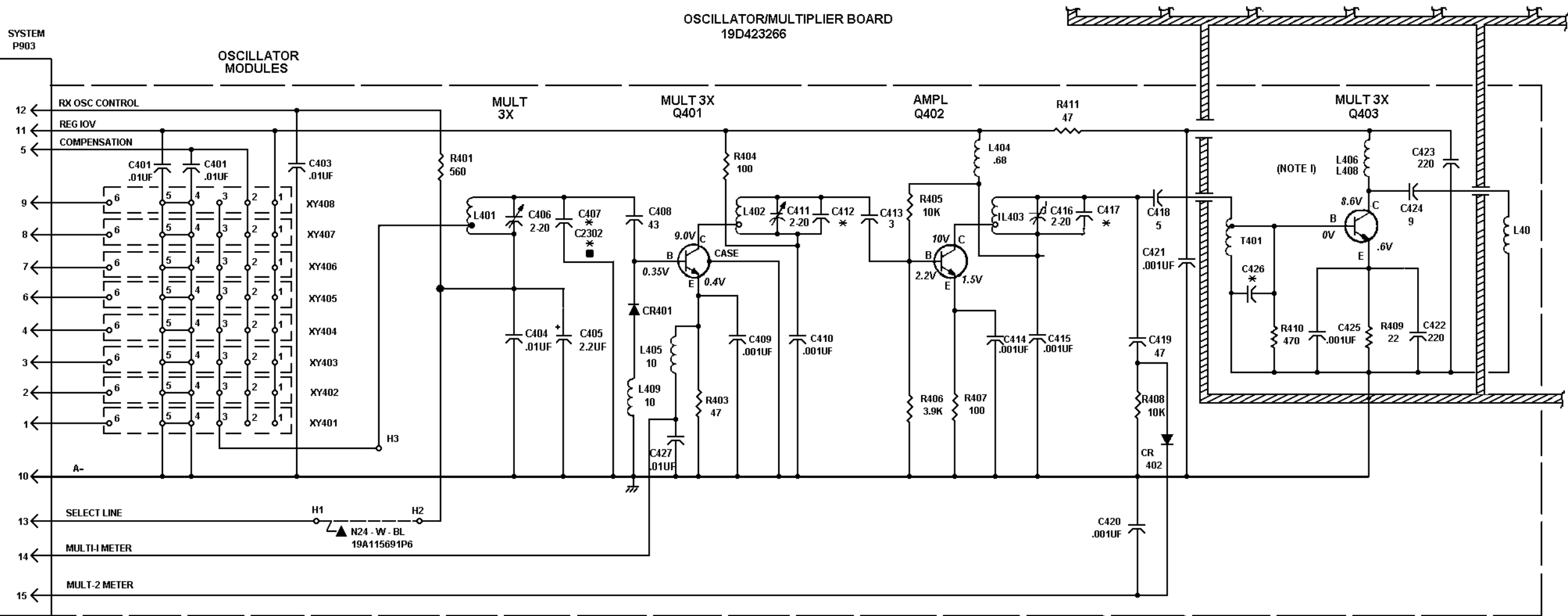


PARTIAL VIEW  
GROUPS 1, 5, 9 AND 10 ONLY



TOP VIEW

NOTE: LEAD ARRANGEMENT, AND NOT CASE SHAPE, IS DETERMINING FACTOR FOR LEAD IDENTIFICATION.



NOTE: 1. L406-G2, G3, G4, G6, G7 & G8  
L408 - G1, G5, G9 & G10

* COMPONENT VALUE TABLE					
COMP. DESIGN	LL	L	M	H	IM
RF FREQ (MHz)	406 - 420	450 - 470	470 - 494	494 - 512	420 - 450
C407	24	18	12	13	18
C412	12	6	5	4	8
C417	6	3	-	-	3
C426	12	8	6	6	10
C2302	18	3	-	-	10

ALL RESISTORS ARE 1/4WATT UNLESS OTHERWISE SPECIFIED AND RESISTOR VALUES IN OHMS UNLESS FOLLOWED BY K=1000 OHMS OR MEG \* 1,000,000 OHMS. CAPACITOR VALUES IN PICO FARADS (EQUAL TO MICROMICROFARADS) UNLESS FOLLOWED BY UF=MICROFARADS. INDUCTANCE VALUES IN MICROHENRYS UNLESS FOLLOWED BY MH=MILLIHENRYS OR H=HENRYS.

CPD 310A

IN ORDER TO RETAIN RATED EQUIPMENT PERFORMANCE, REPLACEMENT OF ANY SERVICE PART SHOULD BE MADE ONLY WITH A COMPONENT HAVING THE SPECIFICATIONS SHOWN ON THE PARTS LIST FOR THAT PART.

▲ THESE COMPONENTS ARE USED TO ADAPT A STANDARD MASTR II RECEIVER TO OPERATION AS AND WITH A DUAL FRONT END. THESE COMPONENTS SHOULD BE IGNORED IN THE STANDARD RECEIVER. BOARDS IDENTIFIED BY A RED DOT HAVE BEEN MODIFIED FOR DFE OPERATION PER MOD KIT 19A129750G1 OR G2.	
RECEIVER CHANNEL	D.F.E. CHANNEL
SEE IF FILTER BD FOR OTHER DFE CHANGES	NO MODIFICATION REQUIRED ON THE IF FILTER BD
ON PL19D417072 (OSC/MULT BD) NO MODIFICATION REQUIRED	ON PL19D417072 (OSC/MULT BD) 1. N24-W-BL JUMPER ADDED BETWEEN HI & H2 ON OSC/MULT BD.
THESE ITEMS ARE SUPPLIED IN MOD. KIT PL19A129750G1.	THESE ITEMS ARE SUPPLIED IN MOD. KIT PL19A129750G2.
■ THESE COMPONENTS USED TO ADAPT A STANDARD RECEIVER TO 9 - 12 FREQ. OPERATION.	
OSC/MULT BD> 19D423266 1. C2302LL IS USED INSTEAD OF C407LL 2. C2302L IS USED INSTEAD OF C407L 3. C2302LM IS USED INSTEAD OF C407LM	
THESE ITEMS ARE SUPPLIED IN KIT PL19A129737G2. (MOD DRAWING 19D417218)	

	REV LETTER	FREQ RANGE (MHz)	NO. OF FREQ
OSC/MULT BD			
19D423266G1	K	406 - 420	2
19D423266G2	J	450 - 470	2
19D423266G3	K	470 - 494	2
19D423266G4	H	494 - 512	2
19D423266G5	K	406 - 420	8
19D423266G6	J	450 - 470	8
19D423266G7	K	470 - 494	8
19D423266G8	H	494 - 512	8
19D423266G9	G	420 - 450	2
19D423266G10	G	420 - 450	8

406-512 MHz OSCILLATOR/MULTIPLIER BOARD  
19D423266G1-G10

(19D423463, Rev. 15)

406-512 MHz OSCILLATOR/MULTIPLIER 19D423266G1-10		
19D423266G1 2 FREQ 406-420 MHz (LL) REV K 19D423266G2 2 FREQ 450-470 MHz (LL) REV J 19D423266G3 2 FREQ 470-494 MHz (LL) REV K 19D423266G4 2 FREQ 494-512 MHz (LL) REV H 19D423266G5 8 FREQ 406-420 MHz (LL) REV K 19D423266G6 8 FREQ 450-470 MHz (LL) REV J 19D423266G7 8 FREQ 470-494 MHz (LL) REV K 19D423266G8 8 FREQ 494-512 MHz (LL) REV H 19D423266G9 2 FREQ 420-450 MHz (LL) REV G 19D423266G10 8 FREQ 420-450 MHz (LL) REV G		
SYMBOL	PART NUMBER	DESCRIPTION
		— — — — CAPACITORS — — — —
C401 thru C404	T644ACP310K	Polyester: .010 µF ±10%, 50 VDCW.
C405	5496267P13	Tantalum: 2.2 µF ± 20%, 20 VDCW; sim to Sprague Type 150D.
C406	19A700012P2	Variable, ceramic: 2.5 to 20 pF 200 VDCW, temp coef -250 -700 PPM; sim to Panasonic ECX1ZW20X32.
C407LL	19A143491P24J8	Ceramic: 24 pF ±5%, temp coef -80 PPM. (Used in G1 and G5).
C407L	19A143491P18J8	Ceramic: 18 pF ±5%, temp coef -80 PPM. (Used in G2, G6, G9 and G10).
C407M	19A143491P12J0	Ceramic: 12 pF ±5%, temp coef 0 PPM. (Used in G3 and G7).
C407H	19A143491P13J8	Ceramic disc: 13 pF ± 5%, 500 VDCW, temp coef -80 PPM. (Used in G4 and G8).
C408	19A116656P43J0	Ceramic disc: 43 pF ± 5%. 500 VDCW, temp coef 0 PPM.
C409 and C410	19A701602P19	Ceramic: 1000 pF ± 20%, 1000 VDCW; sim to RMC Type JF Discap.
C411	19A700012P1	Variable, ceramic: 2 to 10 pF, 200 VDCW, temp coef -350 to +500 PPM; sim to Panasonic ECV-1ZW10X32.
C412LL	19A143491P12J0	Ceramic: 12 pF ±5%, temp coef 0 PPM. (Used in G1 and G5).
C412L	19A143491P6G0	Ceramic disc: 6 pF ± 0.25 pF, 500 vdcw temp coef 0 PPM. (Used in G2 and G6).
C412LM	19A143491P8J0	Ceramic: 8 pF ±0.5 pF, 500 VDCW, temp coef 0 PPM. (Used in G9 and G10).
C412M	19A143491P5G0	Ceramic disc: 5 pF ± 0.25 pF, 500 VDCW, temp coef 0 PPM. (Used in G3 and G7).
C412H	19A143491P4G0	Ceramic disc: 4 pF ± 0.25 pF, 500 VDCW, temp coef 0 PPM. (Used in G4 and G8).
C413	19A143491P3J0	Ceramic: 3 pF ±5%, temp coef 0 PPM.
C414 and C415	19A701602P19	Ceramic: 1000 pF ± 20%, 1000 VDCW; sim to RMC Type JF Discap.
C416	19A700012P1	Variable, ceramic: 2 to 10 pF, 200 VDCW, temp coef -350 to +500 PPM; sim to Panasonic ECV-1ZW10X32.
C417LL	19A143491P6G0	Ceramic disc: 6 pF ± 0.25 pF, 500 vdcw temp coef 0 PPM. (Used in G1 and G5).
C417L	19A143491P3G0	Ceramic disc: 3 pF ± 0.25 pF, 500 VDCW, temp coef 0 PPM. (Used in G2, G6, G9 and G10).

SYMBOL	PART NUMBER	DESCRIPTION
C418	19A143491P5J0	Ceramic: 5 pF ±0.5 pF, 500 VDCW, temp coef 0 PPM.
C419	5491601P13	Phenolic: 0.47 pF ± 10%, 500 VDCW.
C420 and C421	19A701602P19	Ceramic: 1000 pF ± 20%, 1000 VDCW; sim to RMC Type JF Discap.
C422 and C423	19A700015P37	Teflon/Mica: 220 pF ±5%, 250 VDCW.
C424	19A143491P9J0	Ceramic disc: 9 pF + 0r - 0.5 pF, 500 VDCW, temp coef 0 PPM.
C425	19A701602P19	Ceramic: 1000 pF ± 20%, 1000 VDCW; sim to RMC Type JF Discap.
C426LL	19A143491P12J0	Ceramic: 12 pF ±5%, temp coef 0 PPM. (Used in G1 and G5).
C426LM	19A143491P10J0	Ceramic: 10 pF ±5%, temp coef 0 PPM. (Used in G9 and G10).
C426L	19A143491P8J0	Ceramic: 8 pF ±0.5 pF, 500 VDCW, temp coef 0 PPM. (Used in G2 and G6).
C426M	19A143491P6J0	Ceramic: 6 pF ±5%, temp coef 0 PPM. (Used in G3 and G7).
C426H	19A143491P6J0	Ceramic: 6 pF ±5%, temp coef 0 PPM. (Used in G4 and G8).
C427	T644ACP310K	Polyester: .010 µF ±10%, 50 VDCW.
		— — — — DIODES — — — —
CR401	19A115250P1	Silicon, fast recovery, 225 mA, 50 PIV.
CR402	19A116052P5	Silicon, fast recovery, 100 mA, 100 PIV; sim to H-P 082-2835.
		— — — INDUCTORS — — — —
L401 thru L403		Part of printed wiring board.
L404	19A700000P10	Coil, RF: 680 nH ±10%; sim to Jeffers 4411-6K.
L405	19A700024P25	Coil, RF: 10.0 µH ± 10%, 3.70 ohms DC res max.
L406	19A129711P1	Coil. (Used in G2, G3, G4, G6, G7 and G8).
L407	19A129710P1	Coil.
L408	19A129352P8	Coil. (Used in G1, G5, G9 and G10).
L409	19A700024P25	Coil, RF: 10.0 µH ± 10%, 3.70 ohms DC res max.
		— — — — PLUGS — — — —
P903		Includes:
	19B219594P1	Contact, electrical: 7 pins.
	19B219594P2	Contact, electrical: 8 pins.
		— — — TRANSISTORS — — —
Q401	19A134447P1	Silicon, NPN; sim to Type 2N5179.
Q402	19A116899P1	Silicon, NPN; sim to Type 2N2368.
Q403	19A116201P1	Silicon, NPN.
		— — — — RESISTORS — — — —
R401	19A700106P57	Composition: 560 ohms ± 5%, 1/4 w.
R403	19A700106P31	Composition: 47 ohms ± 5%, 1/4 w.
R404	19A700106P39	Composition: 100 ohms ± 5%, 1/4 w.
R405	19A700106P87	Composition: 10K ohms ± 5%, 1/4 w.

SYMBOL	PART NUMBER	DESCRIPTION
R406	19A700106P77	Composition: 3.9K ohms ± 5%, 1/4 w.
R407	19A700106P39	Composition: 100 ohms ± 5%, 1/4 w.
R408	19A700106P87	Composition: 10K ohms ± 5%, 1/4 w.
R409	19A700106P23	Composition: 22 ohms ± 5%, 1/4 w.
R410	19A700106P55	Composition: 470 ohms ± 5%, 1/4 w.
R411	19A700106P31	Composition: 47 ohms ±5%, 1/4 w.
		— — — TRANSFORMERS — — —
T401	19A127108G3	Coil.
	19A700122P1	Torroidal core. (Used in G3).
		— — — — SOCKETS — — — —
XY401-8 thru XY408	19A701785P1	Contact, electrical; sim to Molex 08-50-0404.
		<b>ASSOCIATED ASSEMBLIES</b>
		— — OSCILLATOR MODULES — —
		NOTE: WHEN REORDERING, SPECIFY ICOM FREQUENCY.FOR STANDARD LOW SIDE INJECTION FREQUENCY
		ICOM Freq.= <u>Operating frequency - 11.2</u> 27
		Compensated: +5 PPM, 450-512 MHz.
		Externally Compensated: +5 PPM, 406-420 MHz, 450-512 MHz.
		Compensated: +2 PPM, 406-420 MHz.
		NOTE: FOR HIGH SIDE INJECTION FREQUENCY
		ICOM Freq.= <u>Operating frequency + 11.2</u> 27
		— — — MISCELLANEOUS — — —
	4031594P1	Insulator. (Located under C406, C411, C416).
	19A701332P1	Insulator disk: sim to Thermalloy 7717-46. (Used with Q403).
		<b>DUPLEX HIGH SIDE INJECTION 19A130045G5</b>
		— — — — CAPACITORS — — — —
C2315	19A116656P13J8	Ceramic: 13 pF ±5%, -80 PPM.
C2316	19A116656P5J0	Ceramic disc: 5 pF ±0.5 pF, 500 VDCW, temp coef 0 PPM.
C2317	19A116656P8J8	Ceramic disc: 8 pF ± 5%, 500 VDCW; temp. coef -80 PPM.
C2318	19A116656P10J8	Ceramic disc: 10 pF ± 5%, 500 VDCW; temp. coef -80 PPM.
C2319	19A116656P4J0	Ceramic disc: 4 pF ±0.5 pF, 500 VDCW, temp coef 0 PPM.
C2320	19A116656P6J8	Ceramic disc: 6 pF ± 5%, 500 VDCW; temp. coef -80 PPM.
C2321	19A116656P3J0	Ceramic disc: 3 pF ±0.5 pF, 500 VDCW, temp coef 0 PPM.

PRODUCTION CHANGES

Changes in the equipment to improve performance or to simplify circuits are identified by a "Revision Letter," which is stamped after the model number of the unit. The revision stamped on the unit includes all previous revisions. Refer to the Parts List for descriptions of parts affected by these revisions.

REV. A - 19D423266G1 & G5  
To improve operation of oscillator/multiplier in 406-420 MHz band. Deleted coil L406 and added coil L408.

SYMBOL	PART NUMBER	DESCRIPTION
		<b>9-12 FREQ. MOD KIT 19A129737G2</b>
		— — — — CAPACITORS — — — —
C2301H	19A116656P7K1	Ceramic disc: 7 pF,+1 pF, 500 VDCW, temp coef -150 PPM.
C2301L	19A116656P10K1	Ceramic disc: 10 pF +1 pF, 500 VDCW, temp coef -150 PPM.
C2302LL	19A116656P18J8	Ceramic disc: 18 pF ±5%, 500 VDCW, temp coef -80 PPM.
C2302L	19A116656P3J8	Ceramic disc: 3 pF ± 5%, 500 VDCW, temp. coef -80 PPM.
C2302LM	19A116656P10J8	Ceramic disc: 10 pF ±5%, 500 VDCW; temp. coef -80 PPM.
		— — — MISCELLANEOUS — — —
	19A116552P1	Cable clip.
	19A701863P5	Cable clamp; sim to WEC Kesser 3/16-4.
	19A116773P108	Tap screw, Phillips POZIDRIV: No. 7-19 x 1/2.
	7763541P4	Clip, spring tension.
	5491689P93	RF Cable.
	7878455P2	Solderless terminal.

REV. B - 19D423266G1 & G5  
REV. A - 19D423266G2-G4 & G6-G8  
To provide uniform output over multi-frequency range. Changed Q401.

REV. B - 19D423266G2-G4 & G6-G8  
REV. C - 19D423266G1 & G5  
To increase output of OSC/MULT board with multiple ICOMs. Added L409

REV. D - 19D423266G1 & G5  
REV. C - 19D423266G2-G4 & G6-G8  
To improve drive to first Multiplier. Changed C408.

REV. E - 19D423266G1, G5  
REV. D - 19D423266G2, 3, 4, 6, 7, 8  
REV. A - 19D423266G9, G10  
To allow operation in 420-450 MHz range. Deleted L406. Added L408.

REV. B - 19D423266G9, G10  
To improve tuning. Changed C412, C417 and C425 in Groups 1 and 5. Changed C425 in Groups 2, 3, 6, 7, 9 and 10.

REV. F - 19D423266G1 & G5  
REV. E - 19D423266G2, G3, G6, G7  
REV. C - 19D423266G9 & G10  
To improve operation. Deleted C424LL, C424L, C424LM, C424M and C424H. Added C424 (19A116656PJ0) for Groups 1 thru 10.

REV. G - 19D423266G1 & G5  
REV. F - 19D423266G2, G3, G6 & G7  
REV. E - 19D423266G4 & G8  
REV. D - 19D423266G9 & G10  
To improve operation of multiplier operation. Changed C424, C425 and R410.

REV. H - 19D423266G1 & G5  
REV. G - 19D423266G2, G3, G6 & G7  
REV. F - 19D423266G4 & G8  
REV. E - 19D423266G9 & G10  
To incorporate new transistor. Changed Q402.

REV. J - 19D423266G1 & G5  
REV. H - 19D423266G2, G3, G6 & G7  
REV. G - 19D423266G4 & G8  
REV. F - 19D423266G9 & G10  
To increase the injection level to provide better sensitivity. Deleted C426 and added C426LL, C426LM, C426L, C426M ad C426H. Changed R410 and T401. Components were: C426 - 19A116656P3K0, Ceramic disc; 3 pf ±1 pf,500 VDCW, temp coef 0 PPM. R410 - 19A700706P39, composition, 100 ohms ±5%, 1.4 w. T401 - 19A129921G1; coil.

REV. K - 19D423266G1, G3 & G7  
REV. J - 19D423266G2 & G6  
REV. H - 19D423266G4, G5 & G8  
REV. G - 19D423266G9 & G10  
To prevent the receiver from self-quieting, caused by IF getting into the oscillator-multiplier on the 10 Volt line. Changed C401. C401 was: 19A116655P19 - Ceramic disc: 1000 pf ±20%, 1000 VDCW; sim to RMC type JF Discap.

\*COMPONENTS, ADDED, DELETED OR CHANGED BY PRODUCTION CHANGES

*This page intentionally left blank*