

INSTRUCTIONS
FOR
REMOTE KEYING PANEL INTERFACE
OPTION 960I

(FOR MASTR II REMOTE/REPEATER STATION)

Option 960I modifies the MASTR II Remote/Repeater Station when used with the Remote Keying Panel in voting systems. The option adds a 19C320880G1 Receiver Voting Tone Board which allows using the station receiver as one of the voting system satellite receivers. Instructions for the 19C320880G1 Receiver Voting Tone Board are provided in Maintenance Manual LBI-4913.

The Repeater Board with Modification Kit 19A129953G3 prevents the station from keying for approximately 200 milliseconds when the receiver squelch is opened. This

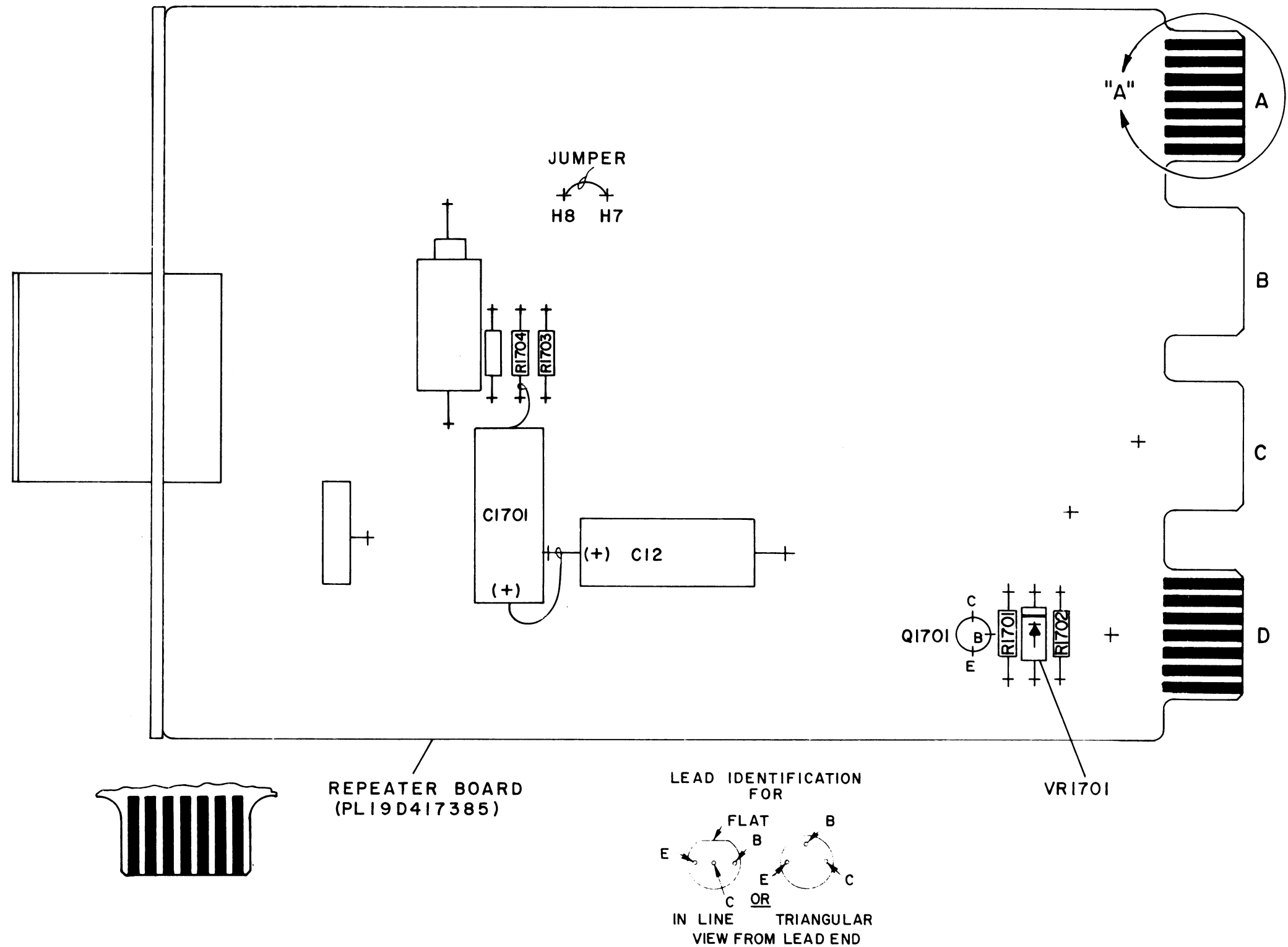
allows the Remote Keying System to key the station as though it were a remote control station. Remote priority thus overrides the repeat keying. If the remote Keying should fail, the repeater will then automatically key (after the 200 millisecond delay), providing emergency backup for the Remote Keying System.

The station must also be modified for 4-Wire Audio. Installation of the 4-Wire Audio Kit 19A129508G1 is provided in the Remote Control Shelf MAINTENANCE MANUAL LBI-4793.

DF-9033

MOBILE RADIO DEPARTMENT
GENERAL ELECTRIC COMPANY
LYNCHBURG, VIRGINIA 24502

Printed in U.S.A.



THESE INSTRUCTIONS COVER THE INSTALLATION OF THE SHARED REPEATER KIT (PL19A129953G1) TO THE (PL19D417385) REPEATER BOARD.

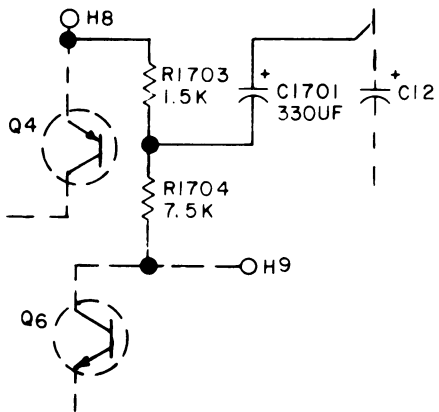
INSTRUCTIONS FOR THE SHARED REPEATER KIT (PL19A129953G1)

1. SOLDER ALL ELECTRICAL CONNECTIONS.
2. ASSEMBLE Q1701, R1701, R1702 AND VR1701 AS SHOWN.
3. TRIM LEADS AND TABS PROJECTING FROM SOLDER SIDE TO .06 MAX.
4. REMOVE JUMPER FROM H7 AND H8.

THESE INSTRUCTIONS COVER THE INSTALLATION OF THE REPEAT WITH REMOTE KEYING PANEL KIT (PL19A129953G2) TO THE REPEATER BOARD (PL19D417385).

INSTRUCTIONS FOR REPEAT WITH REMOTE KEYING PANEL KIT (PL19A129953G2)

1. REMOVE R11 (5.1K) AND REPLACE WITH R1704 (7.5K).
2. REMOVE R12 (1K) AND REPLACE WITH R1703 (1.5K).
3. ASSEMBLE C1701 (330 uF) AS SHOWN.
4. TEST BY APPLYING +10V TO D1 AND GROUND TO D8. CONNECT A 10K RESISTOR FROM D3 TO +10V. BE SURE REPEATER DISABLE SWITCH IS IN THE ENABLE POSITION. GROUND A12 AND OBSERVE THAT THE OUTPUT AT D3 DROPS TO < 1V IN 180-250 MS.



(19C320820, Rev. 2)

INSTALLATION INSTRUCTIONS

REPEAT WITH REMOTE KEYING
PANEL KIT 19A129953G2