



INSTALLATION OF

MASTR *Executive II*

RADIO COMMON CARRIER (RCC)
MOBILE COMBINATIONS

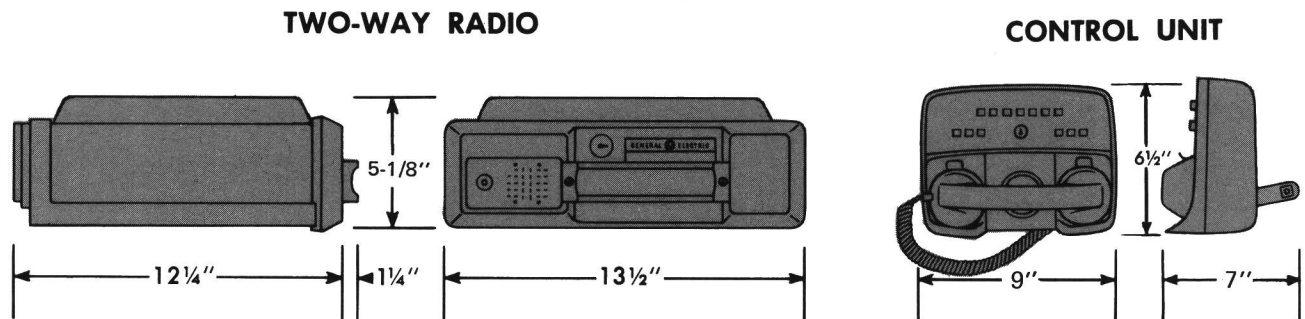


Figure 1 — Mounting Dimensions

INSTALLATION EQUIPMENT

The equipment required for installing the Two-Way Radio includes:

- An electric drill for drilling mounting holes
- Drills and circle cutters (see sizes in box below)
- A soldering iron for the antenna cable
- Phillips and flat-blade screwdrivers and a 5/16-inch hex head driver for mounting screws

DRILL SIZES

No. 31 (1/8-inch) Drill for No. 8 Self-Tapping Screws
No. 27 (9/64-inch) Drill for No. 10 Self-Tapping Screws
3/4-inch Punch or Holesaw for Antenna

UNPACKING AND CHECKING EQUIPMENT

Carefully unpack the Two-Way Radio. It is recommended that you identify the items in the packing case and check them off in the appropriate column below before discarding the packing material. If any damage has occurred to the equipment during shipment, file a claim with the carrier immediately.

EQUIPMENT

Two-Way Radio	<input type="checkbox"/>
Control Unit	<input type="checkbox"/>
Antenna Cable and RF Connector	<input type="checkbox"/>
Top Cover 19B227570G1	<input type="checkbox"/>
Bottom Cover 19C303911G4	<input type="checkbox"/>
Mounting Hardware 19A122244G6	<input type="checkbox"/>
Fuse Assembly 19B216021G6	<input type="checkbox"/>
Key 5491682P8	<input type="checkbox"/>

PLANNING THE INSTALLATION

Before starting, plan your installation carefully—so that it will be:

- Convenient for the operator to use
- Neat
- Protected from damage from water
- Easy for the serviceman to service

- Out of the way of auto mechanics
- Out of the way of passengers

It is suggested that you take advantage of the experience of one of the many authorized General Electric Service Stations located throughout the United States by having them install your Two-Way Radio and make the final adjustments.

WARNING

Interference with Vehicular Electronics — *Electronic fuel injection systems, electronic anti-skid braking systems, electronic cruise control systems, etc., are typical of the types of electronic devices which may be prone to malfunction due to the lack of protection from radio frequency energy present when transmitting. If the vehicle contains such equipment, consult the dealer for the make of vehicle and enlist his aid in determining if such electronic circuits will perform normally when the radio is transmitting.*

RUNNING CABLES

To assure the feasibility of the cable routings you plan to use, the cables should be run prior to installing the unit. Try to route the cables away from locations where they may be damaged or where they may be in the way of automobile mechanics, the driver or passengers. Whenever possible, utilize existing holes in the firewall and trunk and the channels above or beneath the doors. Be sure to leave enough slack in the cables to allow the radio to be pulled out, with power applied, for servicing. Refer to the Cable Routing diagram (Fig. 2) and the Cabling Diagram (Fig. 3) for additional information.

Starting with the plug end of the Power/Control cable at the location of the trunk mount unit, run the black control cable to the Control Unit location. Tape the numbered leads before running the cable.

Run the red battery lead to the vicinity of the battery. Cut the red lead and connect the fuse assembly in the red lead with ring terminals provided. Then mount the fuse assembly near the battery, and connect the red lead to the positive (+) battery terminal. Next, connect the brown lead to a good vehicle ground in the trunk compartment.

Figure 2 – Cable Routing

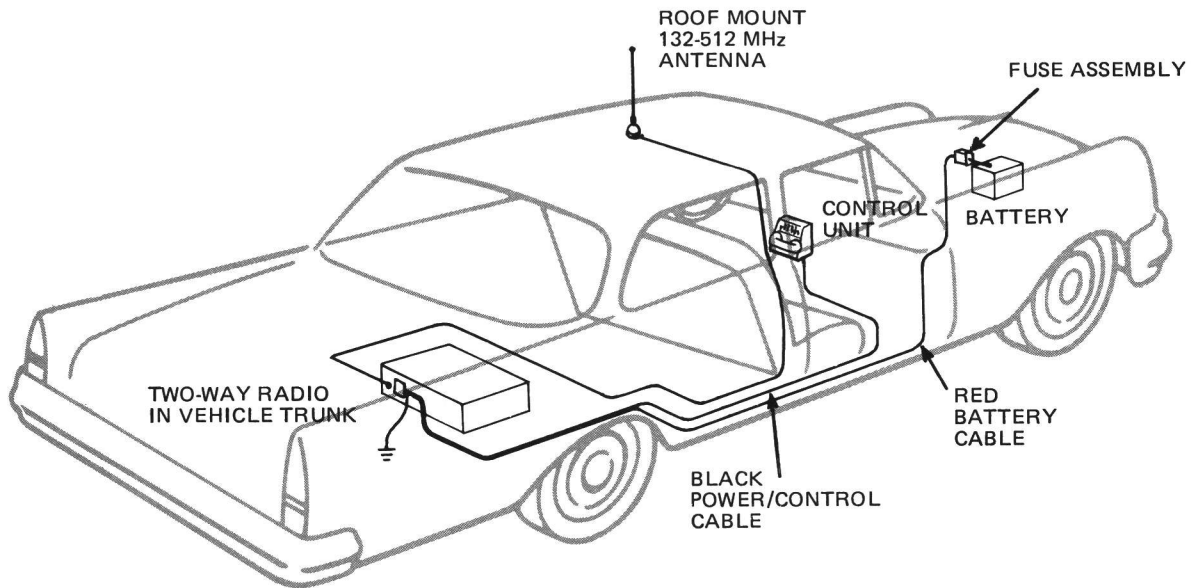
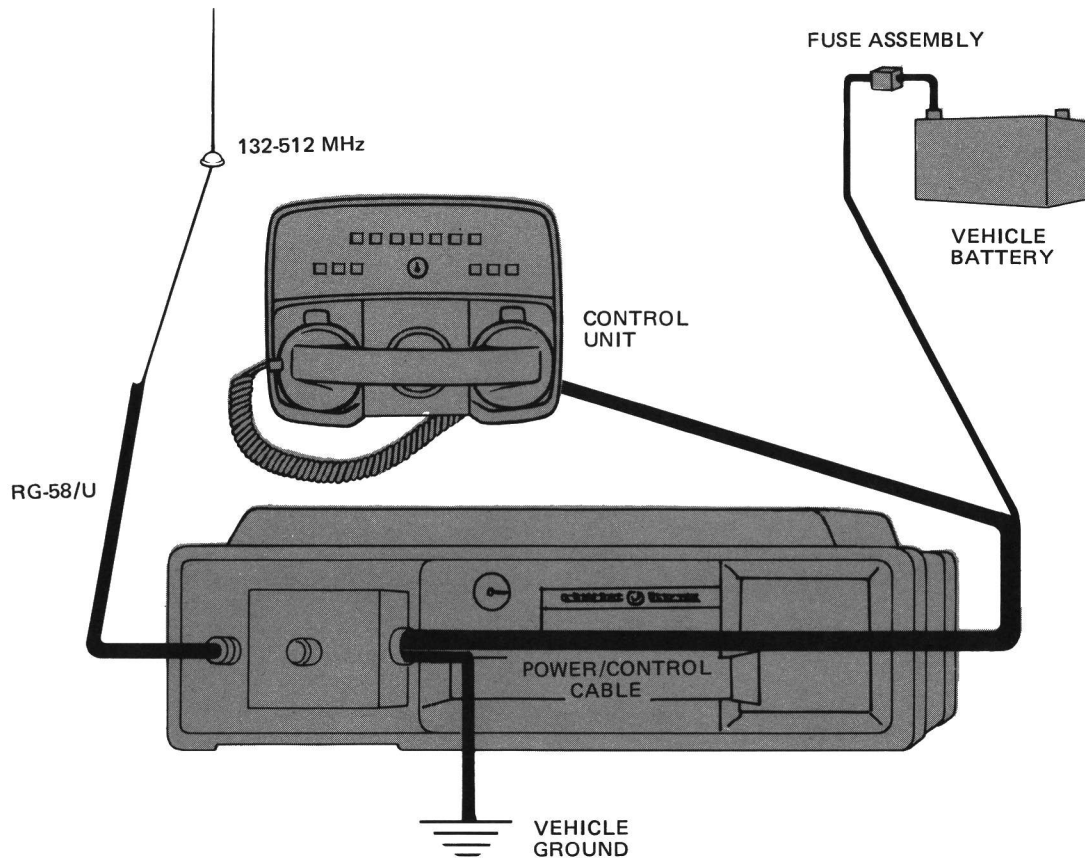


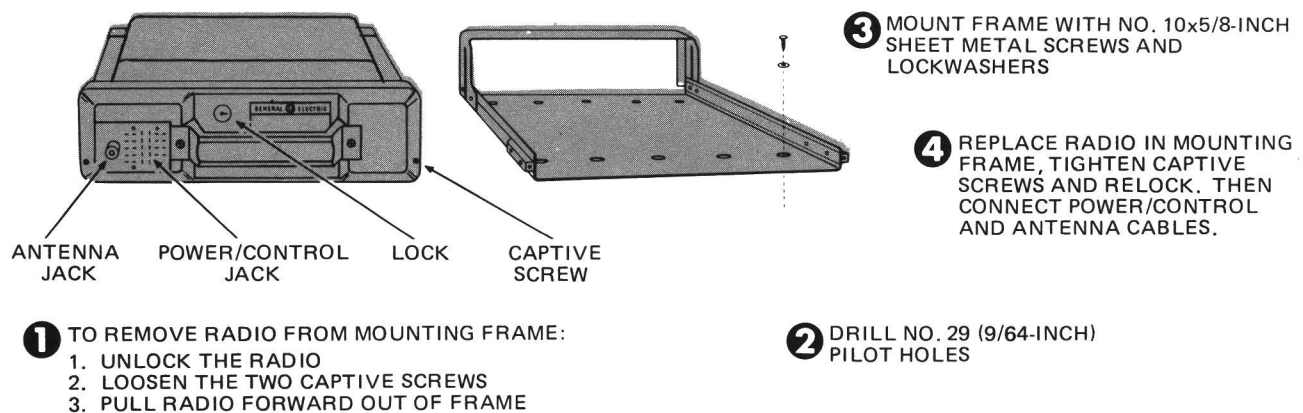
Figure 3 – Cabling Diagram



INSTALLING THE TWO-WAY RADIO

The Two-Way Radio may be mounted horizontally, vertically or on its side. Select a mounting location with sufficient room for the radio to be pulled out of the mounting frame for servicing. Mount the radio as shown in Figure 4.

Figure 4 — Installing the Two-Way Radio



CAUTION

Be careful to avoid damaging some vital part of the vehicle when drilling mounting holes. Always check to see how far the mounting screws will extend below the mounting surface before installing.

WARNING

For passenger safety, mount the radio securely so that the unit will not break loose in the event of a collision. This is especially important in station wagons, vans and similar type installations where a loose radio could be extremely dangerous to the vehicle occupants.

CONTROL UNIT

Mount the Control Unit within convenient reach of the operator, and where it will not interfere with safe operation of the vehicle. The Control Unit normally mounts on the transmission hump, below the instrument panel.

Use the hinged mounting bracket and spacer bar assembly to locate the four mounting holes. Mount the hinged brackets as shown in Figure 5. After mounting the brackets, remove and discard the spacer bar while retaining the 1/4-inch machine screws and nuts. The two extension brackets may be used where additional height or a different mounting angle is required.

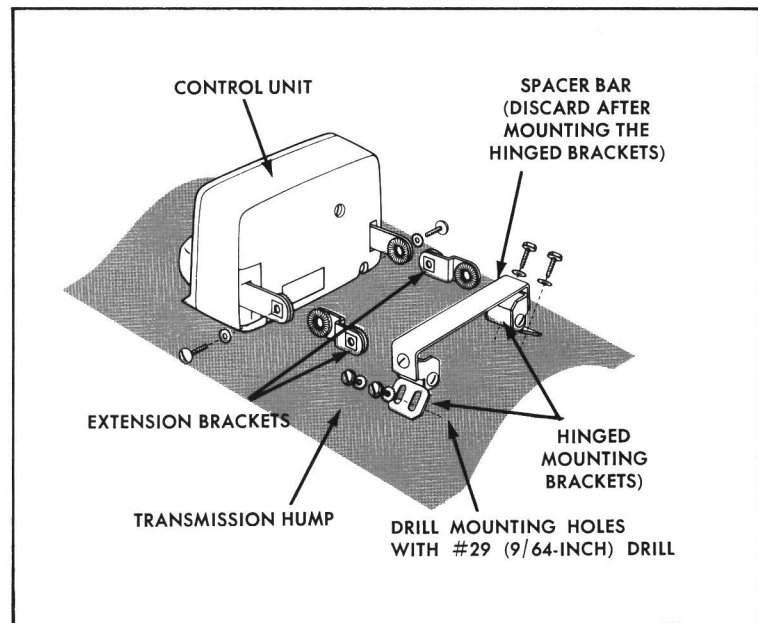


Figure 5 — Installing the Control Unit

Alternate mounting positions are shown in Figure 6.

Before attaching the Control Unit to the mounting brackets, it is necessary to strap in the subscriber's code and set the Channel Selector pushbuttons.

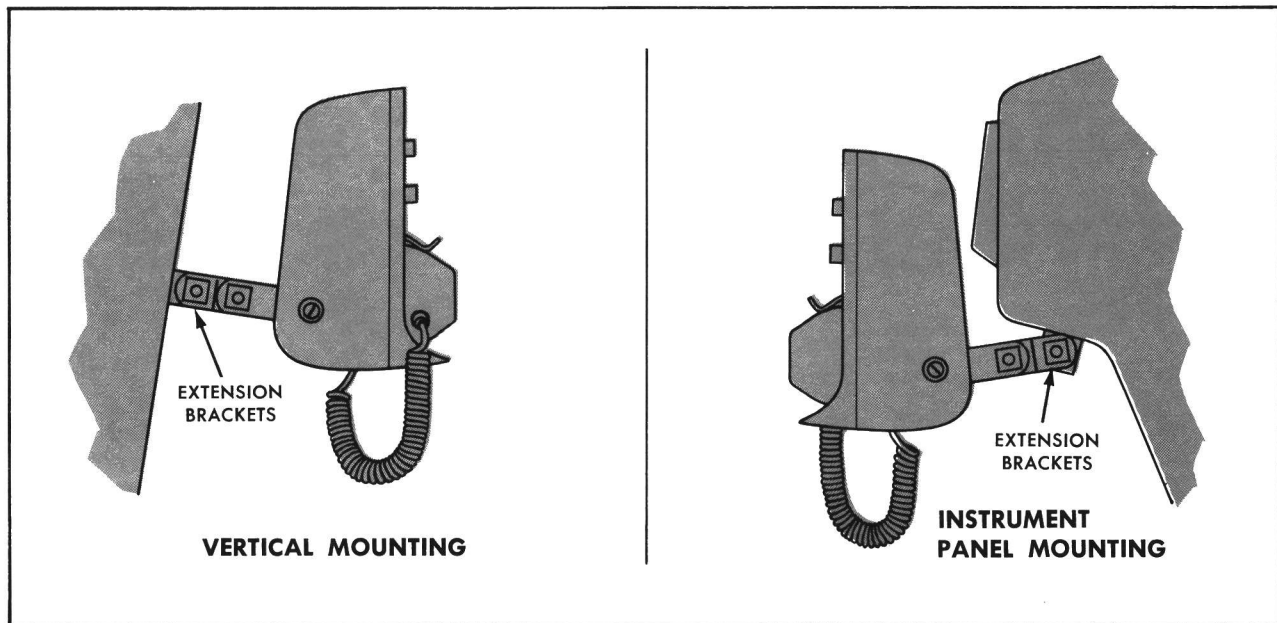


Figure 6 — Alternate Mounting Positions

CODE STRAPPING

For test purposes, the Control Unit is shipped from the factory strapped to operate on the seven digit radio-telephone number (code) 205-9551. It will be necessary to change this code number to the code assigned to the RCC Executive II Two-Way Radio.

To gain access to the code strapping board, loosen the three captive screws in the back of the Control Unit and remove the back cover. The code strapping board is located on the top of the chassis. Carefully study Figures 7 and 8 before attempting to strap in the code.

NOTES

1. Do not use the number "1" in the first or fourth digit of the seven digit code.
2. Do not use the same number in the first and fourth digit of the code. These numbers must be different.
3. Always strap in all seven digits even though the mobile is intended only for local four digit service.

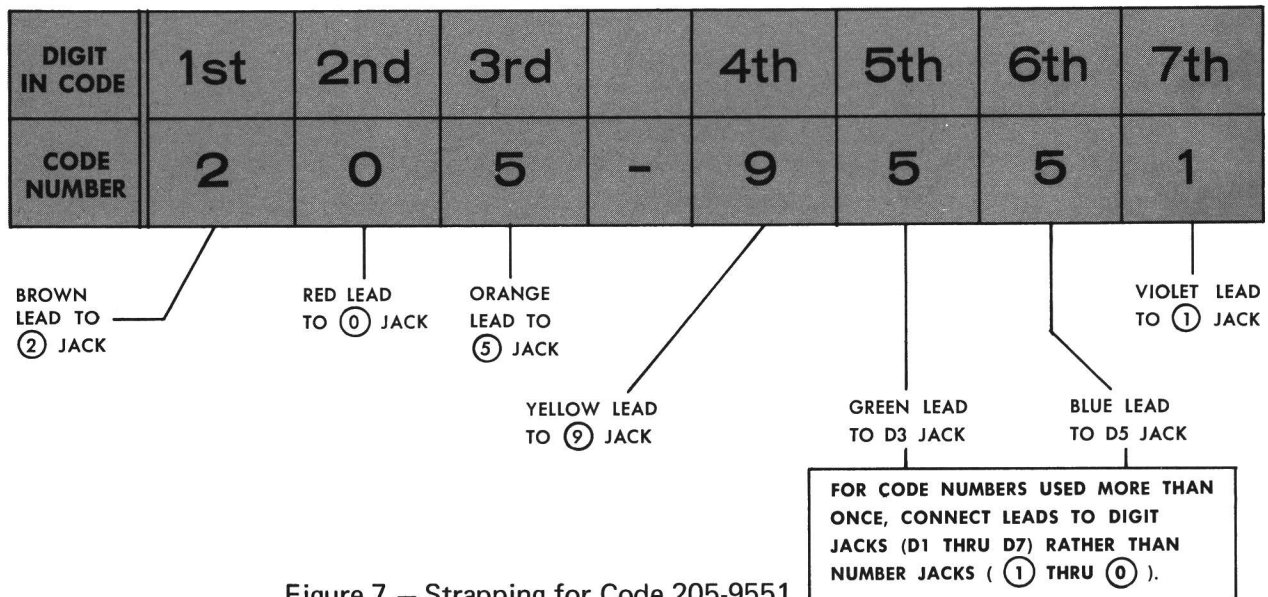


Figure 7 – Strapping for Code 205-9551

CODE STRAPPING BOARD

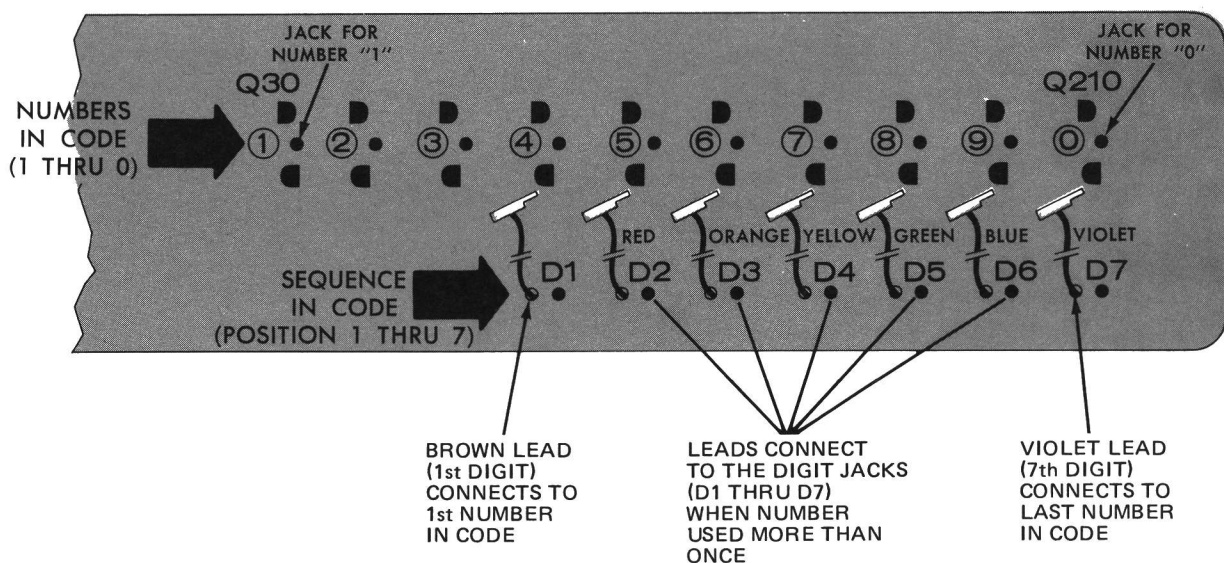


Figure 8 – Simplified Drawing of Code Strapping Board

ANTENNA

Installation instructions for the antenna are packaged with the antenna. The antenna must be installed in accordance with good engineering practice for optimum results. The most effective mounting position is usually in the center of the roof of the vehicle. The antenna cable will normally run from the front of the Two-Way Radio, behind sections of the interior trim to a door or window post, and then up between the roof and headliner in the passenger compartment to the antenna base.

Try to route the cable away from locations where it will be exposed to heat, sharp edges or mechanical damage, and where it will be out of the way of the driver, passengers or vehicle mechanics. Wherever possible, existing holes in the trunk wall, and the channels above or beneath doors and window columns should be utilized.

PLACING THE TWO-WAY RADIO IN OPERATION

After completing the installation of the Two-Way Radio, the following final operations should be performed:

Have an electronics technician who holds a 1st or 2nd Class FCC Radiotelephone license make the final adjustments.

These include:

Transmitter (final tuning and loading; frequency and modulation check).

Receiver (matching to antenna).

Control Unit:

Checking the code strapping by having the operator dial both the complete seven-digit code and the local four-digit code.

Checking for proper operation of the Busy-Circuit option (if present).

Checking to see if the Automatic Channel Reverting is strapped to the call or "home" channel.

Be sure that a RADIO TRANSMITTER IDENTIFICATION for (FCC Form 450-C or General Electric Form NP270303) is filled out and attached to the transmitter.

Fill out and mail the "ON ARRIVAL" Information Card.

Give the Operator's Manual for the Two-Way Radio to the person who is going to operate it, or place the Manual in the vehicle where he will find it.

MOBILE RADIO DEPARTMENT
GENERAL ELECTRIC COMPANY • LYNCHBURG, VIRGINIA 24502

GENERAL  ELECTRIC