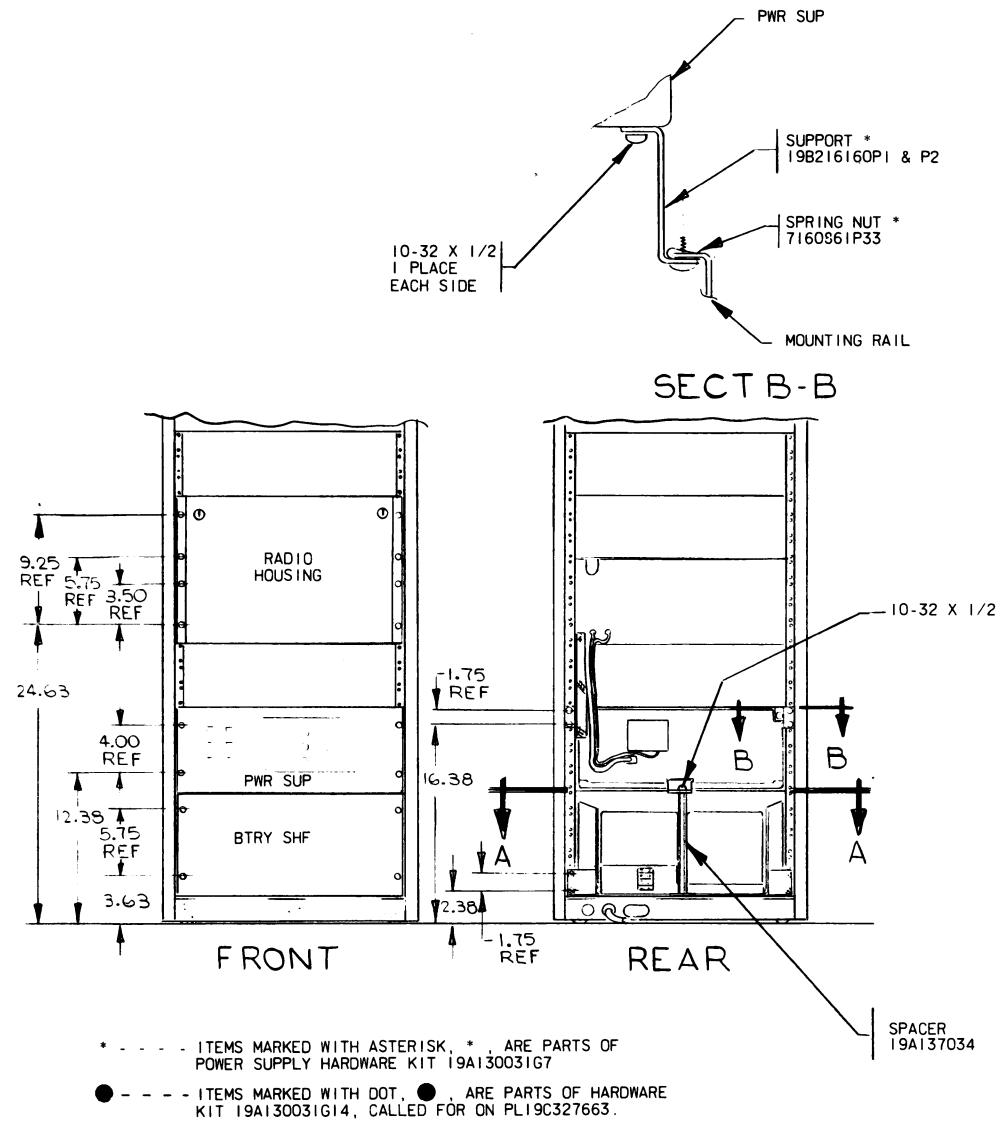


INSTRUCTIONS
FOR
BATTERY STANDBY SHELF
OPTIONS 9624 & 9625
(FOR MASTR[®] II STATIONS)

Option 9624 adds a battery support shelf and harness for rack mounting in a Deskmate or Outdoor cabinet. Option 9625 adds the same in a vertical mount cabinet. The Shelf is used to support four 20 Ampere hour Gel Cell batteries (Option 6990). The batteries and the charger (Option 9502) are not part of this Kit.

MOBILE RADIO DEPARTMENT
GENERAL ELECTRIC COMPANY • LYNCHBURG, VIRGINIA 24502

GENERAL  **ELECTRIC**



① 44 IN. DESKMATE OR OUTDOOR CABINET

THESE INSTRUCTIONS COVER THE INSTALLATION OF THE BATTERY STANDBY SHELF, PL19C327663 INTO THE DESKMATE OR OUTDOOR CABINET.

STEPS:

1. ASSEMBLE THE SPACER, 19A137034 TO THE FLOOR SUPPORT IN THE CABINET & UNDER THE REAR SUPPORT OF THE PWR SUP. SECURE THE PWR SUP TO THE SPACER USING 10-32 X 1/2 SCREW AND ASSOCIATED HARDWARE.
2. RACK THE EQUIPMENT IN THE CABINET AS SHOWN.
3. ADD THE PWR SUP REAR SUPPORTS AS SHOWN IN SECT B-B.
4. INSTALL SPRING NUTS, 7160861P33 TO DIMENSIONS SHOWN ON FRONT & REAR MOUNTING RAILS.
5. MOUNT BATTERY STANDBY SHELF TO FRONT MOUNTING RAIL USING SCREWS, 19A134011P1, FURNISHED IN HDW KIT. SEE TOP VIEW IN SECT A-A.
6. MOUNT SUPPORTS TO EACH SIDE OF BTRY STBY SHF USING 10-32 X 1/2 SCREWS & REG 10 FL. WASHER (2 PLACES EACH SIDE) SEE TOP VIEW IN SECT A-A.
7. MOUNT SHELF TO BACK RAIL USING SCREWS, 19A134011P1, FURNISHED IN HDW KIT.
8. MOUNT HARNESS, 19C327801 TO SHELF AS SHOWN.
9. CUT CHARGER LEADS 4 FT ±6 IN.
10. INSTALL TERMINALS 19B209268P6. (FURNISHED WITH HARNESS, 19C327801) ONTO CHARGER LEADS.
11. ROUTE LEADS TO BTRY STBY SHF TERMINAL BOARD. CONNECT RED LEAD TO +12V. CONNECT BLACK LEAD TO -12V.

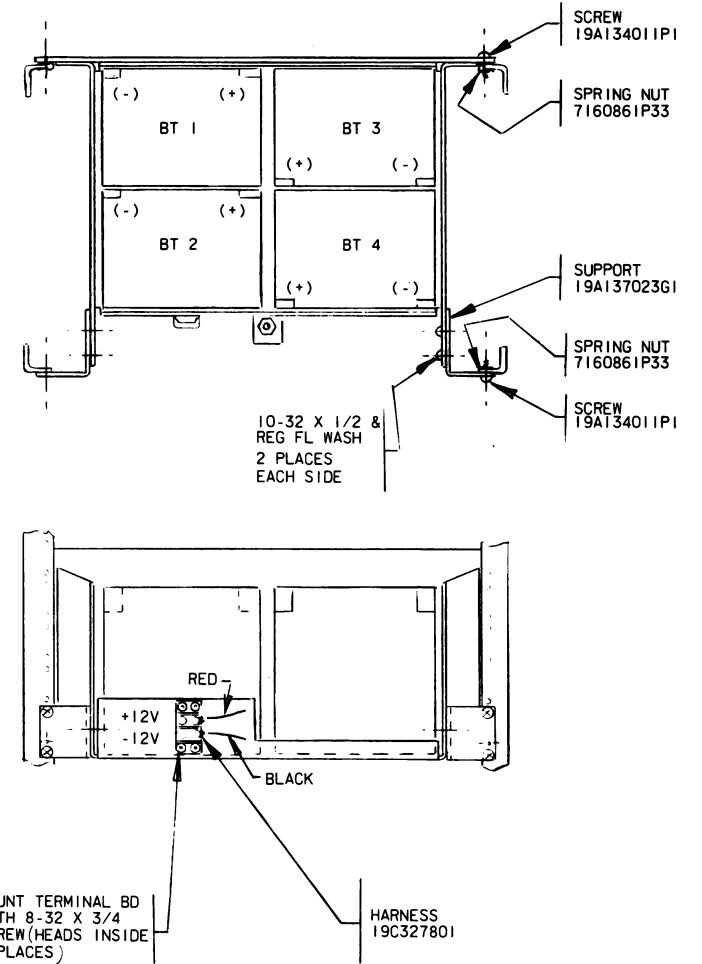
② VERTICAL MOUNT CABINET

THESE INSTRUCTIONS COVER THE INSTALLATION OF THE BATTERY STANDBY SHELF 19C327663 INTO THE VERTICAL MOUNT CABINET.

STEPS:

1. INSTALL SPRING NUTS, 7160861P33 TO DIMENSIONS SHOWN ON FRONT & REAR MOUNTING RAILS.
2. MOUNT BTRY STBY SHF TO FRONT MOUNTING RAIL USING SCREWS, 19A134011P1 FURNISHED IN HDW KIT. SEE TOP VIEW IN SECT A-A.
3. MOUNT SUPPORTS TO EACH SIDE OF BTRY STBY SHF USING 10-32 X 1/2 SCREWS & REG 10 FL. WASHER (2 PLACES EACH SIDE). SEE TOP VIEW IN SECT A-A.
4. MOUNT SHELF TO BACK MOUNTING RAIL USING SCREWS, 19A134011P1 FURNISHED IN HDW KIT.
5. MOUNT HARNESS 19C327801 TO SHELF AS SHOWN.
6. CUT CHARGER LEADS 4 FT ±6 IN.
7. INSTALL TERMINALS 19B209268P6 (FURNISHED WITH HARNESS 19C327801) ONTO CHARGER LEADS.
8. ROUTE LEADS TO BTRY STBY SHF TERMINAL BOARD. CONNECT RED LEAD TO +12V. CONNECT BLACK LEAD TO -12V.

(19D424751, Rev. 0)



③ INSTALLATION OF BATTERIES

STEPS:

1. INSTALL BT 1 THRU BT 4, 19B209590P1 INTO SHELF AS SHOWN IN TOP VIEW OF SECT A-A.
2. CONNECT 4 RED WIRES OF HARNESS TO "(+)" TERMINALS.
3. CONNECT 4 BLACK WIRES OF HARNESS TO "(-)" TERMINALS.

INSTALLATION INSTRUCTIONS

BATTERY STANDBY SHELF

PARTS LIST

LBI-30460
BATTERY STANDBY SHELF
AND
ASSOCIATED ASSEMBLIES

SYMBOL	GE PART NO.	DESCRIPTION
TBI		BATTERY STANDBY SHELF 19C327663G1
	7160861P33	Nut, sheet spring. (Secures Battery Standby Shelf to cabinet).
	19A134011P1	Tap screw: No. 10-16 x 3/4. (Secures Battery Stanby Shelf to cabinet).
	19A137023G1	Bracket, front mounting. (Battery Shelf- Quantity 2).
		ASSOCIATED ASSEMBLIES
		HARNESSE ASSEMBLY 19C327801G1
	19C301087P46	Terminal board, phen: 2 terminals; sim to GE CR151D.
	19A116849P1	Conductor splice.
	19A134465P2	Solderless terminal: sim to AMP 60455-2.
	19A134464P2	Cover. (Used with 19A134465P2 solderless terminal).
	19B209268P105	Solderless terminal: wire size No. 16-14; sim to AMP 41107. (Located on TBI- Quantity 4).
	19B209268P6	Solderless terminal: wire size No. 12-10; sim to AMP 325197 LOOSE PC. (Located on TBI- Quantity 2).
	N84P5007C6	Machine screw: No. 8-32 x 7/16. (Secures 19B209268P105 solderless terminal to TBI).
	N84P5005C6	Machine screw: No. 8-32 x 5/16. (Secures 19B209268P6 solderless terminal to TBI).
		- - - - - MISCELLANEOUS - - - - -
	19A137034G1	Spacer. 8-3/4 inches long with 10-32 thread. (Located in rear of Battery Shelf).
	7160861P33	Nut, sheet spring. (Secures Power Supply support to mounting rail).
	19A134011P1	Tap screw: No. 10-16 x 3/4. (Secures Power Supply support to mounting rail).
	19B226160P1	Support. (Located between Power Supply and mounting rail- left side).
	19B226160P2	Support. (Located between Power Supply and mounting rail- right side).

*COMPONENTS ADDED, DELETED OR CHANGED BY PRODUCTION CHANGES.

ORDERING SERVICE PARTS

Each component appearing on the schematic diagram is identified by a symbol number to simplify locating it in the parts list. Each component is listed by symbol number, followed by its description and GE Part Number.

Service parts may be obtained from Authorized GE Communication Equipment Service Stations or through any GE Radio Communication Equipment Sales Office. When ordering a part, be sure to give:

1. GE Part Number for component
2. Description of part
3. Model number of equipment
4. Revision letter stamped on unit

These instructions do not purport to cover all details or variations in equipment nor to provide for every possible contingency to be met in connection with installation, operation or maintenance.

Should further information be desired, or should particular problems arise which are not covered sufficiently for the purchaser's purposes, contact the nearest Radio Communication Equipment Sales Office of the General Electric Company.

MOBILE RADIO DEPARTMENT
GENERAL ELECTRIC COMPANY • LYNCHBURG, VIRGINIA 24502

