

INSTRUCTIONS
FOR
Porta●Mobile II™
INTERNAL/EXTERNAL SPEAKER KIT 19A130965G1
(OPTION 2113)

CONTENTS	
DESCRIPTION	Page
DESCRIPTION	1
INSTALLATION	2
SCHEMATIC AND INTERCONNECTION DIAGRAM	3
PARTS LIST AND PRODUCTION CHANGES	4

DESCRIPTION

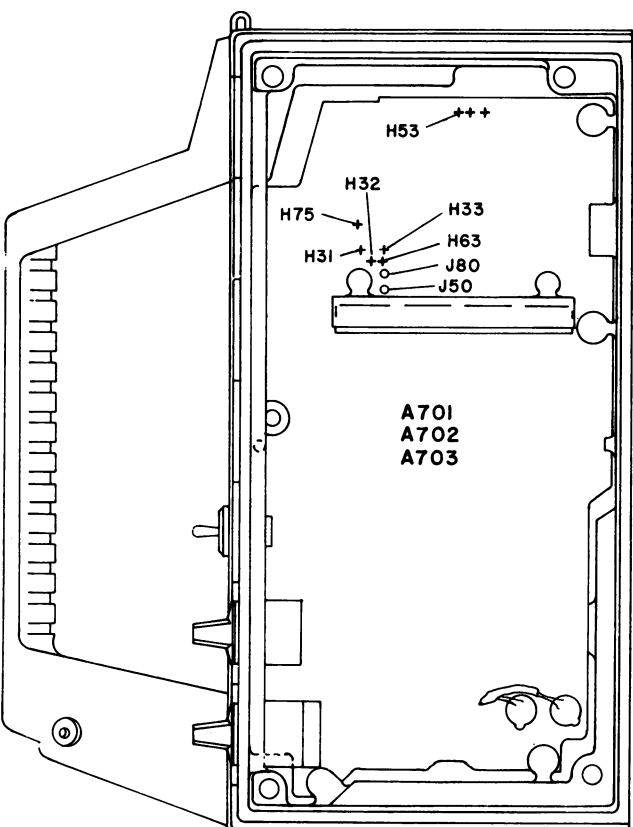
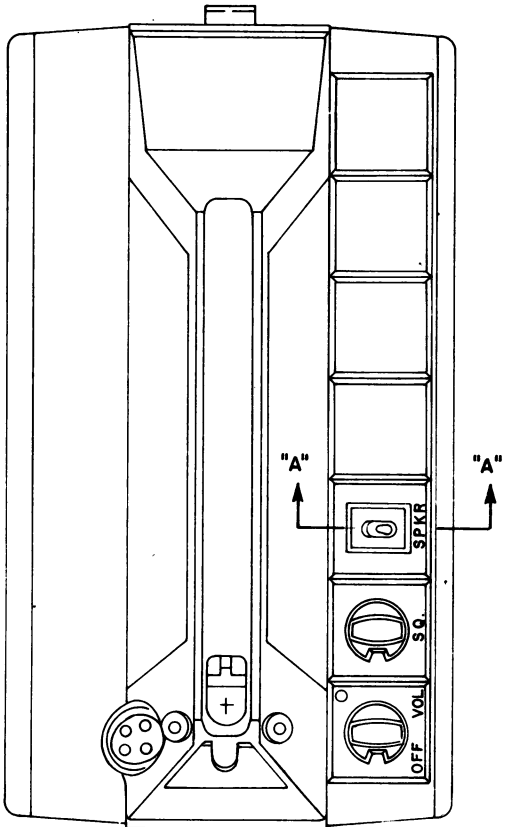
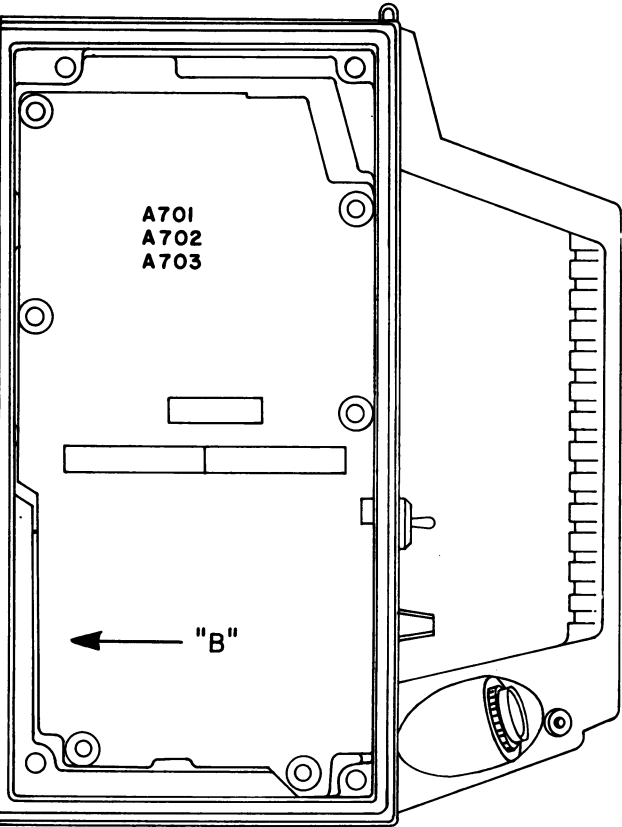
Internal/External Speaker Kit 19A130965G1
used with Porta●Mobile II provides toggle
switch S3301 mounted on the control panel

to transfer audio from an internal speaker
to an external speaker.

Installation and Interconnection
Diagrams provide the necessary information
to install an Internal/External Speaker
Kit (See Table of Contents).

GENERAL ELECTRIC COMPANY • MOBILE COMMUNICATIONS DIVISION
WORLD HEADQUARTERS • LYNCHBURG, VIRGINIA 24502 U.S.A.

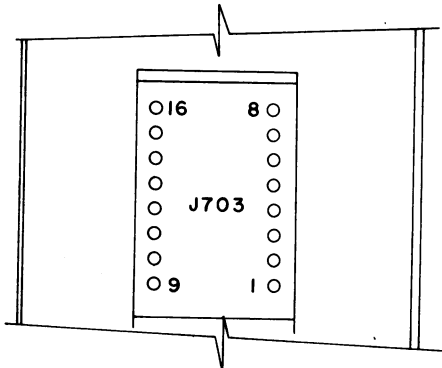




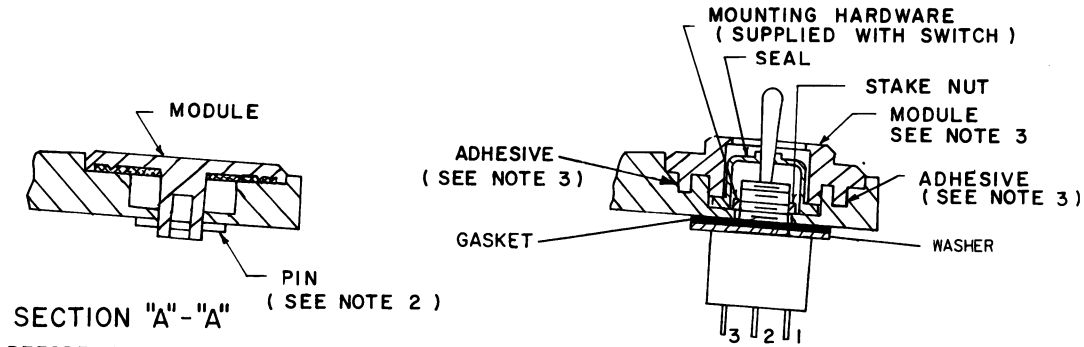
THESE INSTRUCTIONS COVER THE INSTALLATION
OF OPTION PL19A130965G1 INT/EXT SPKR

CONNECTIONS CHART		
FROM	TO	WIRE COLOR
S3301-1	A701, A702, A703-H31	SF22-O
S3301-2	A701, A702, A703-H33	SF22-G
S3301-3	A701, A702, A703-H32	SF22-BL
* J703-13	A703-H53	Y22-O
* J703-14	A703-H75	Y22-Bk

* USED ON MOTORCYCLE AND MOBILE UNITS ONLY.
(SEE NOTE 9)



VIEW AT "B"



SECTION "A"-"A"
BEFORE SWITCH ASSY
(PARTIAL)

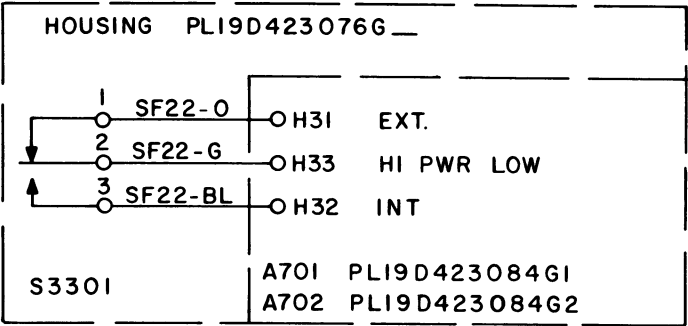
SECTION "A"-"A"
AFTER ASSY OF S3301
(PARTIAL)

- INSTRUCTIONS:
1. REMOVE FRONT AND BACK COVERS IF PRESENT.
 2. REMOVE PIN, GASKET AND DUMMY MODULE AT POSITION SHOWN AND DISCARD..
 3. ASSEMBLE WASHER AND GASKET TO S3301, SEAL AND MODULE. PART OF KIT PL19A130965G1 IN POSITION SHOWN.▲FILL KEYING SLOT IN THREADED SWITCH BUSHING WITH RTV PER P15F-EA106P1 OR P2. DISCARD LOCKING RING THAT IS PART OF SWITCH. APPLY ADHESIVE TO MATING SURFACES OF MODULE AND CASE (SEE SECT "A-A") PER CPD PROCESS P15F-EA106P4 PARTS TO BE CLAMPED TOGETHER DURING CURING CYCLE.
 4. CUT RIM ON SOLDER SIDE OF SYSTEMS BOARD A701/A702/A703 BETWEEN H31-H32 & H32-H33.
 5. MAKE CONNECTIONS PER CHART ABOVE.
 6. SOLDER ALL ELECTRICAL CONNECTIONS.
 7. ASSEMBLE FRONT AND REAR COVERS IF REQUIRED.
 8. FOR CONTROL WIRE CLAMPING INFORMATION REFER TO- DRAWING 19D423115 NOTE 7.
 9. SUPPORT WIRES SOLDERED TO J703 BY STAKING IN PLACE WITH A COATING OF ADHESIVE PER PROCESS P15F-EA106P2.
- 2 SAME AS PART 1, PLUS WIRES MARKED THUS *.

▲ IF POSITION SHOWN IS TO BE OCCUPIED BY ANOTHER
OPTION, MOVE SWITCH TO THE RIGHT TO THE NEAREST
UNOCCUPIED POSITION.

INSTALLATION INSTRUCTIONS

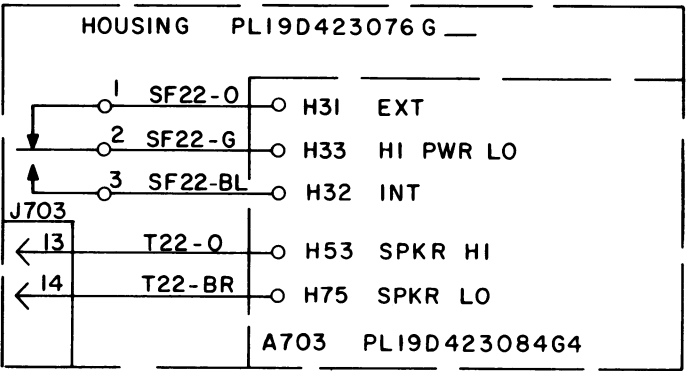
INTERNAL/EXTERNAL SPEAKER
19A130965G1



NOTE :
CUT RUN BETWEEN H31 - H32 & H32 - H33.

IN ORDER TO RETAIN RATED EQUIPMENT PERFORMANCE, REPLACEMENT OF ANY SERVICE PART SHOULD BE MADE ONLY WITH A COMPONENT HAVING THE SPECIFICATIONS SHOWN ON THE PARTS LIST FOR THAT PART.

(19A130542, Rev. 1)



NOTE :
CUT RUN BETWEEN H31 - H32 & H32 - H33.

IN ORDER TO RETAIN RATED EQUIPMENT PERFORMANCE, REPLACEMENT OF ANY SERVICE PART SHOULD BE MADE ONLY WITH A COMPONENT HAVING THE SPECIFICATIONS SHOWN ON THE PARTS LIST FOR THAT PART.

(19A136515, Rev. 1)

LBI30534

PARTS LIST

LBI-30535

INTERNAL/EXTERNAL SPEAKER KIT
19A130965G1

SYMBOL	GE PART NO.	DESCRIPTION
S3301	19B226809G3	----- SWITCHES ----- Toggle: SPDT; sim to C and K Components 7101SDG.
	19B226358G16	----- MISCELLANEOUS ----- Faceplate. (Used with S3301).
	19C320975P1	Seal.