

INSTALLATION INSTRUCTIONS  
FOR  
DUPLEXER COVER KIT I9A136770G1  
(OPTION 9215)

Duplexer Cover Option 9215 is used with a MASTR® II when equipped with an external duplexer. The Option Kit includes a cover mounted on the rear of a MASTR II, an RF cable with a UHF connector for the receiver RF input, and an RF cable with a UHF connector for the transmitter RF output.

Option 9215 is not compatible with a DC Converter or an internal duplexer.

---

MOBILE RADIO DEPARTMENT  
GENERAL ELECTRIC COMPANY • LYNCHBURG, VIRGINIA 24502

**GENERAL**  **ELECTRIC**



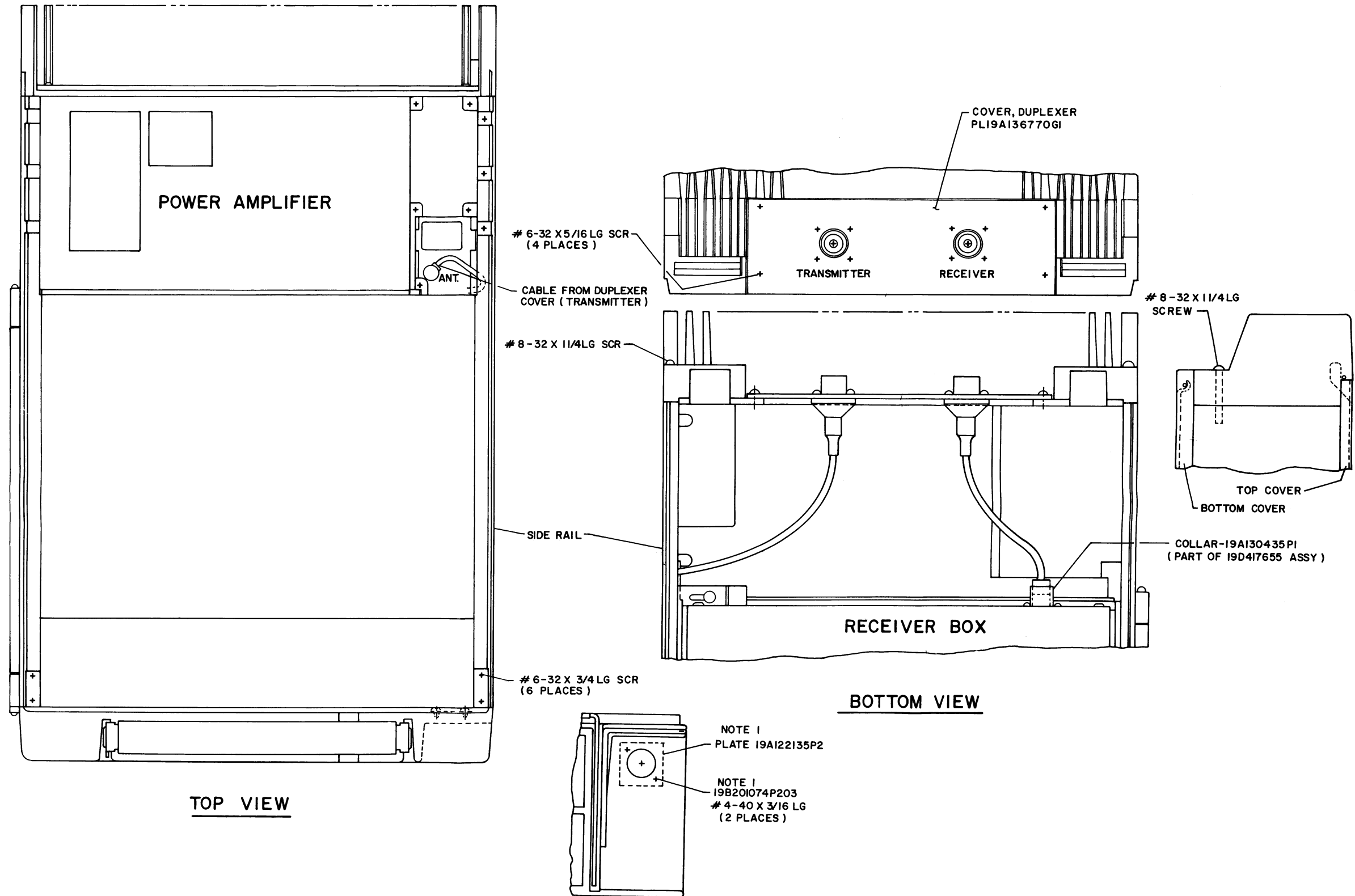
INSTRUCTIONS:

THESE INSTRUCTIONS COVER THE INSTALLATION OF PARTS ADDED TO A DUPLEX PACKAGE, (MINUS INTERNAL DUPLEXER) FOR USE WITH AN EXTERNAL DUPLEXER.

1. REMOVE & DISCARD PLATE ON PA CASTING & REPLACE WITH COVER PL19A136770G1 AS SHOWN.
2. REMOVE SIDE RAIL & CONNECT TRANSMITTER CABLE FROM COVER 19A136770G1 TO ANT PHONO CONNECTOR ON POWER AMPLIFIER BOARD, AS SHOWN.
3. ADD PLATE 19A122135P2 TO INSIDE OF FRONT CAP AS SHOWN.
4. REPLACE SIDE RAIL.
5. CONNECT RECEIVER CABLE TO RECEIVER PHONO CONNECTOR AS SHOWN.

NOTES:

1. ITEMS ARE A PART OF COVER, DUPLEXER PL19A136770G1.



INSTALLATION INSTRUCTIONS

DUPLEXER COVER KIT 19A136770G1

Issue 1

DUPLEXER COVER  
19A136770G1

SYMBOL	GE PART NO.	DESCRIPTION
	19A129312G9	Receiver antenna cable; approx. 13 1/2 inches long. Includes connector 4029493P1 and cover 4029082P2.
	19A129312G8	Transmitter antenna cable: approx. 10 1/2 inches long. Includes connector 4029493P1 and cover 4029082P2.
	19A136769P1	Duplexer cover.
	19A122135P2	Plate. (Located on front cap).
	19B201074P203	Tap screw, Phillips POZIDRIV®: No. 6-32 x 3/16.
	N84P13005C6	Machine screw, Phillips: No. 6-32 x 5/16.