

INSTRUCTIONS  
FOR  
AUXILIARY ANTENNA RELAY  
OPTION 964I

LB130742  
(DF8388)

TABLE OF CONTENTS

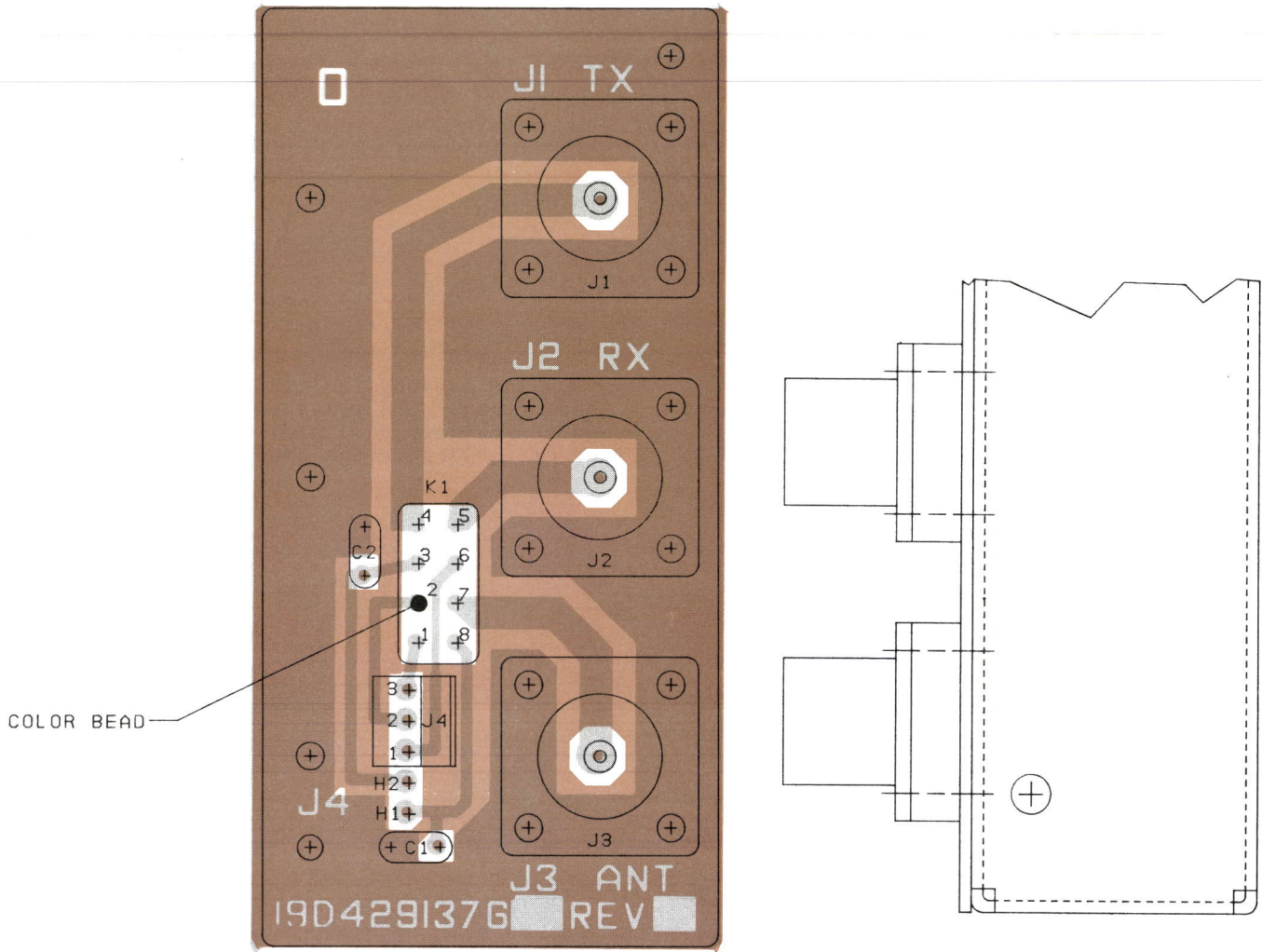
	Page
DESCRIPTION .....	1
OUTLINE DIAGRAM .....	2
SCHEMATIC DIAGRAM .....	3
PARTS LIST AND PRODUCTION CHANGES .....	4
INSTALLATION INSTRUCTIONS .....	5

The Auxiliary Antenna Relay (Option 964I) is used in MASTR<sup>®</sup> II simplex stations when an isolator, cavity or other device is

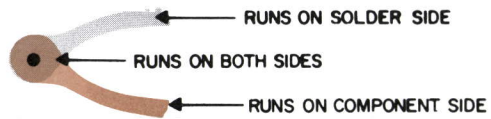
installed between the transmitter and antenna relay. The relay mounts on the rear station cabinet rail and is supplied ready for connecting to the station antenna.

MOBILE RADIO DEPARTMENT  
GENERAL ELECTRIC COMPANY • LYNCHBURG, VIRGINIA 24502

**GENERAL**  **ELECTRIC**

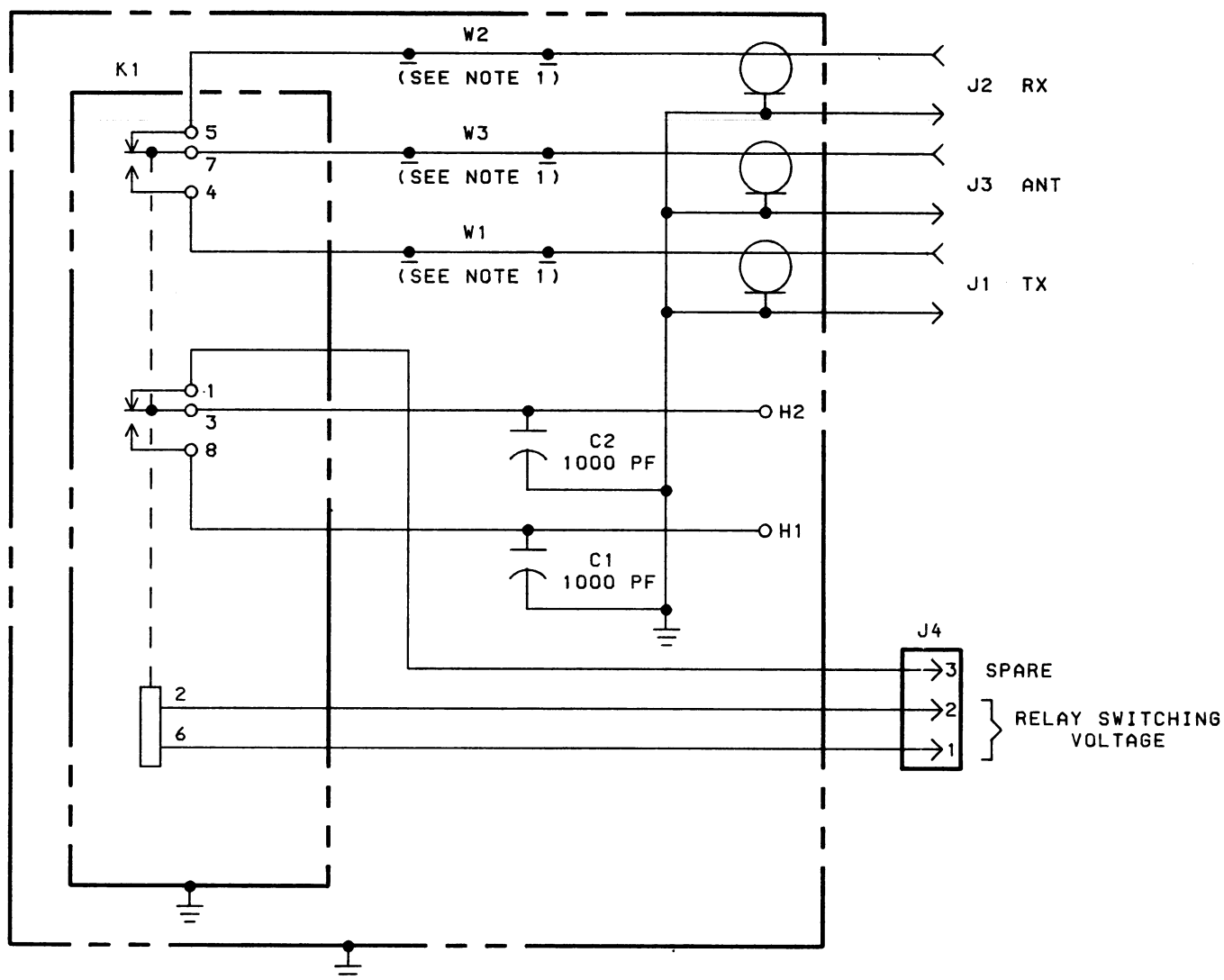


(19C328060, Rev. 0)  
 (19A137289, Sh. 1, Rev. 0)  
 (19A137289, Sh. 2, Rev. 0)



## OUTLINE DIAGRAM

AUXILIARY ANTENNA RELAY  
 19D429137G1



MODEL NO	REV LETTER
PL19D429137G1	

NOTE  
 1. W1, W2 & W3, 50 OHM MICROSTRIPS,  
 ARE PART OF PRINTED WIRING BD.

## SCHEMATIC DIAGRAM

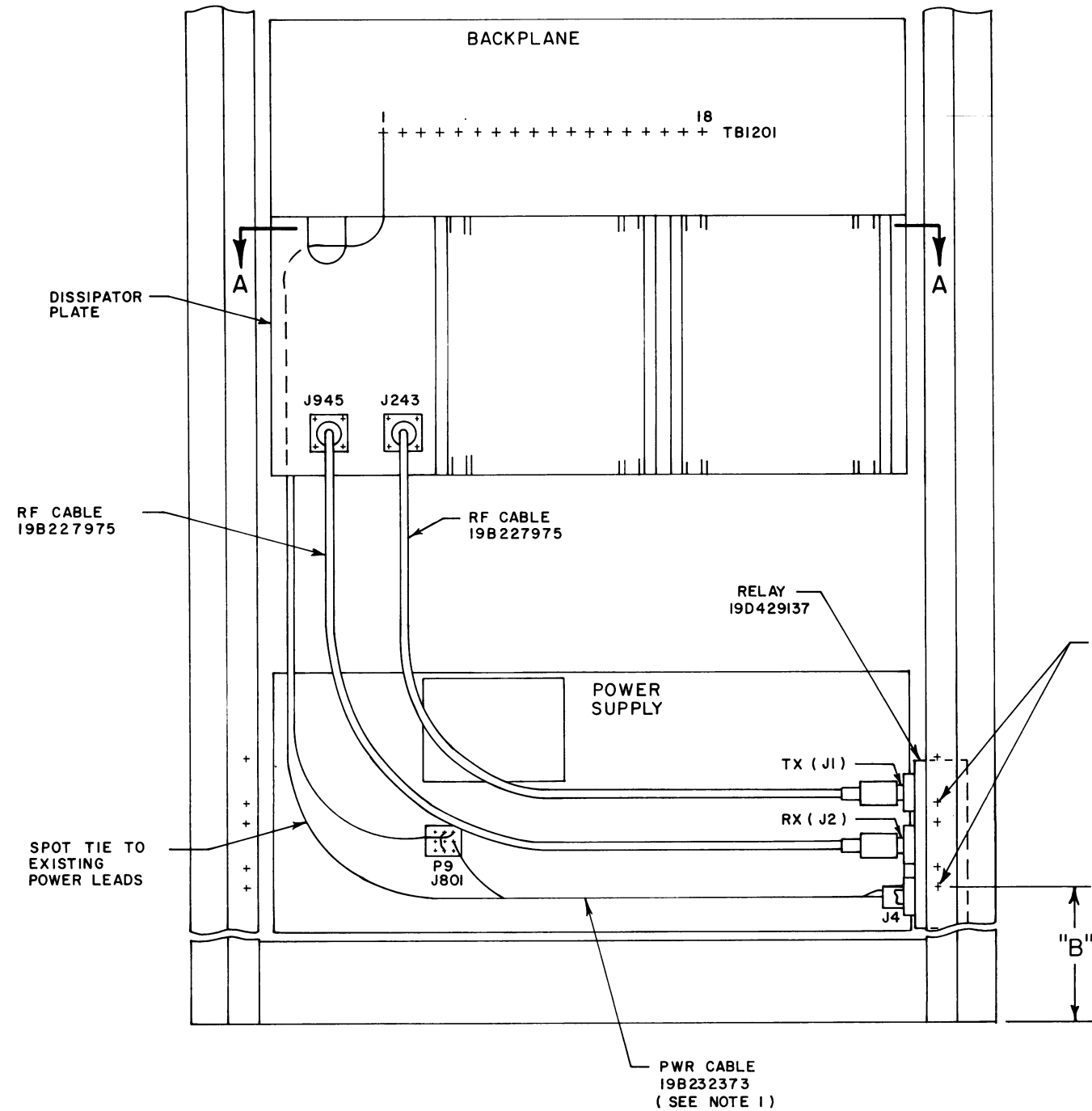
AUXILIARY ANTENNA RELAY  
 19D429137G1

(19C328164, Rev. 1)

## PARTS LIST

AUXILIARY ANTENNA RELAY  
19D429137G1

SYMBOL	GE PART NO.	DESCRIPTION
C1 and C2	19A116655P20	----- CAPACITORS ----- Ceramic disc: 1000 pf $\pm 10\%$ , 1000 VDCW; sim to RMC Type F Discap.
		----- JACKS AND RECEPTACLES -----
J1 thru J3	4029493P1	Connector, receptacle: coaxial; sim to Amphenol 83-798.
J4	19A116659P55	Connector, printed wiring: 3 contacts; sim to Molex 09-65-1031.
K1	19B209558P1	----- RELAYS ----- Hermetic sealed: 180 to 341 ohms coil res, 2 form C contacts, 8.0 to 16.3 VDC; sim to GE 3SAV1760A2.
		----- CABLES ----- (Part of printed board 19C328058P1).
W1 thru W3	19A137187P1	----- MISCELLANEOUS ----- Spacer. (Used with J1-J3).
		19B232203G2 Chassis. N80P21007C6 Machine screw, phillips head: No. 1/4-20 x 7/16. (Secures antenna relay 19D429137G1). N403P25C6 Lockwasher, external tooth: 1/4 inch. (Secures antenna relay 19D429137G1).
		CABLE ASSEMBLY 19B232373G1
	19A116659P14	Connector shell.
	19A116781P5	Contact, electrical: wire range No. 18-24 AWG; sim to Molex 08-50-0106. (Used with 19A116659P14 shell).
	19B209260P102	Spade terminal, solderless: sim to AMP 40763. (Connects to TB1201-1).
	19B209288P2	Connector: 14-20 AWG; sim to Molex 1190T. (Terminates at J801-2).

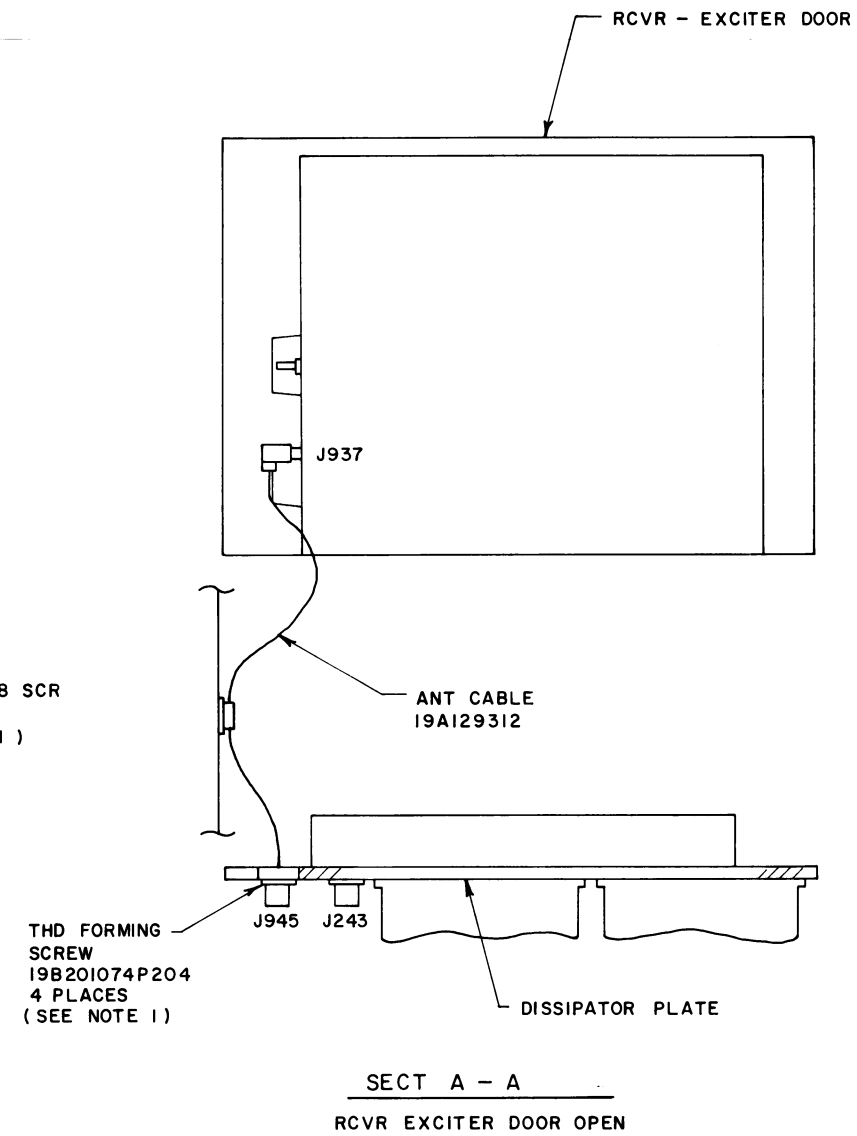


REAR VIEW OF CABINETS

	"B" DIM
DESK MATE OR OUTDOOR CABINET	3.63
VERTICAL CABINET	23.50



WIRING SIDE OF P9



① THESE INSTRUCTIONS COVER THE INSTALLATION OF THE 19D429137 RELAY IN THE DESK MATE, OUTDOOR AND VERTICAL MASTR II CABINET.

INSTRUCTIONS:

1. MOUNT THE RELAY AS SHOWN USING HARDWARE SUPPLIED.
2. PLUG 19B232373 PWR CABLE ONTO J4 ON RELAY AND ROUTE TO J801 ON POWER SUPPLY AS SHOWN. REMOVE P9 AND INSTALL RED PWR CABLE WIRE IN P9-2. REINSTALL P9 ONTO J801.
3. ROUTE BLACK PWR CABLE WIRE BEHIND DISSIPATOR PLATE, OUT SLOT AT TOP AND CONNECT TO TB1201-1 ON BACKPLANE. SPOT TIE BLACK WIRE AS SHOWN.
4. IF PRESENT, REMOVE RF CABLE BETWEEN J937 ON RCVR EXCITER DOOR AND J244 ON PA.
5. IF NOT ALREADY PRESENT, INSTALL 19A129312 CABLE BETWEEN J937 ON RCVR EXCITER DOOR AND DISSIPATOR PLATE (J945).
6. INSTALL 19B227975 CABLE BETWEEN J945 ON DISSIPATOR PLATE AND J2 (RX) JACK ON RELAY.
7. INSTALL 19B227975 CABLE BETWEEN J243 ON DISSIPATOR PLATE AND J1 (TX) JACK ON RELAY.

NOTE:

1. THESE ITEMS SUPPLIED WITH 19D429137 RELAY.

(19D429216, Rev. 1)

INSTALLATION INSTRUCTIONS

AUXILIARY ANTENNA RELAY