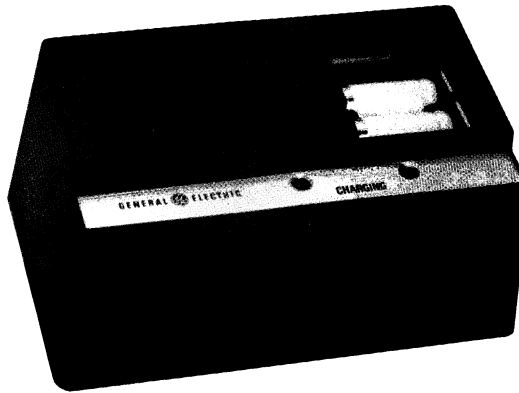


MAINTENANCE MANUAL
FOR
EXECUTIVE PAGER
DESK CHARGER



SPECIFICATIONS

Supply Voltage

19A148214P1
19A148214P2

121 Volts AC $\pm 10\%$, 50/60 Hz
242 Volts AC $\pm 10\%$, 50/60 Hz

Charging Current

Pager Only
Pager and Battery Set

15 milliamperes
25 milliamperes

Charging Time

Pager Only
Pager and Battery Set

15 hours
17 hours

TABLE OF CONTENTS

SPECIFICATIONS Cover

DESCRIPTION 1

OPERATION 1

CIRCUIT ANALYSIS 1

CHARGER DIMENSIONS 2

SCHEMATIC DIAGRAM & PARTS LIST 3

BATTERY DIMENSIONS 4

Figure 1 Desk Charger 1

GENERAL ELECTRIC COMPANY • MOBILE COMMUNICATIONS DIVISION
WORLD HEADQUARTERS • LYNCHBURG, VIRGINIA 24502 U.S.A.



DESCRIPTION

General Electric Desk Charger 19A148214 is required for recharging the Executive II Pager nickel-cadmium batteries. The charger provides a continuous C/10 charge rate, and will fully recharge discharged batteries in 15 hours. Power for the charger is provided by a 121-Volt or a 242-Volt source (depending on Part Number).

The desk charger is capable of recharging a radio with batteries and separate batteries at the same time in 17 hours.

OPERATION

Two red indicator lights on the charger indicates proper charging of the pager and/or spare set of batteries. (See Figure 1.)

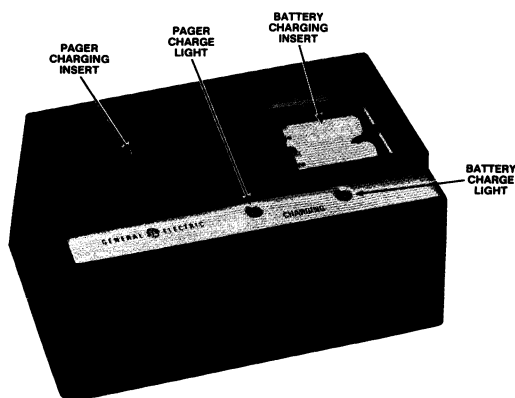


Figure 1 - Desk Charger

NOTE

Temperature characteristics of nickel-cadmium batteries, prevent a full charge at temperature extremes. For a maximum charge, recharge the battery at room temperatures of between 65° to 85° Fahrenheit whenever possible.

To use the desk charger, connect it to a 121- or 242-Volt AC 50/60 Hz source (depending upon the charger Part Number). Next, place the radio into the charging insert with the speaker facing the front of the charger, or place the batteries

into the battery insert. The red LED indicators will light, indicating the batteries are being charged. To charge the batteries to 100% capacity, let it stay in the chargin insert for at least 15 hours.

CIRCUIT ANALYSIS

The desk charger consists of rectifier circuit and two charging circuits. References to symbol numbers mentioned in the following text can be found on the Schematic and Outline Diagram or Parts List (See Table of Contents).

Connecting plug P1 to the correct power source applies power to step-down transformer T1. The output of T1 is rectified by D1 and D2 and applied to the charging circuits.

Resistors R1 and R2 determine the C/10 constant current charge rate (15 milliamps). The charging current is applied to the battery when the battery is in the charging insert, and to the spare battery charging inserts. R1 and R2 are also current-limiting resistors for the LED indicators.

Disassembly

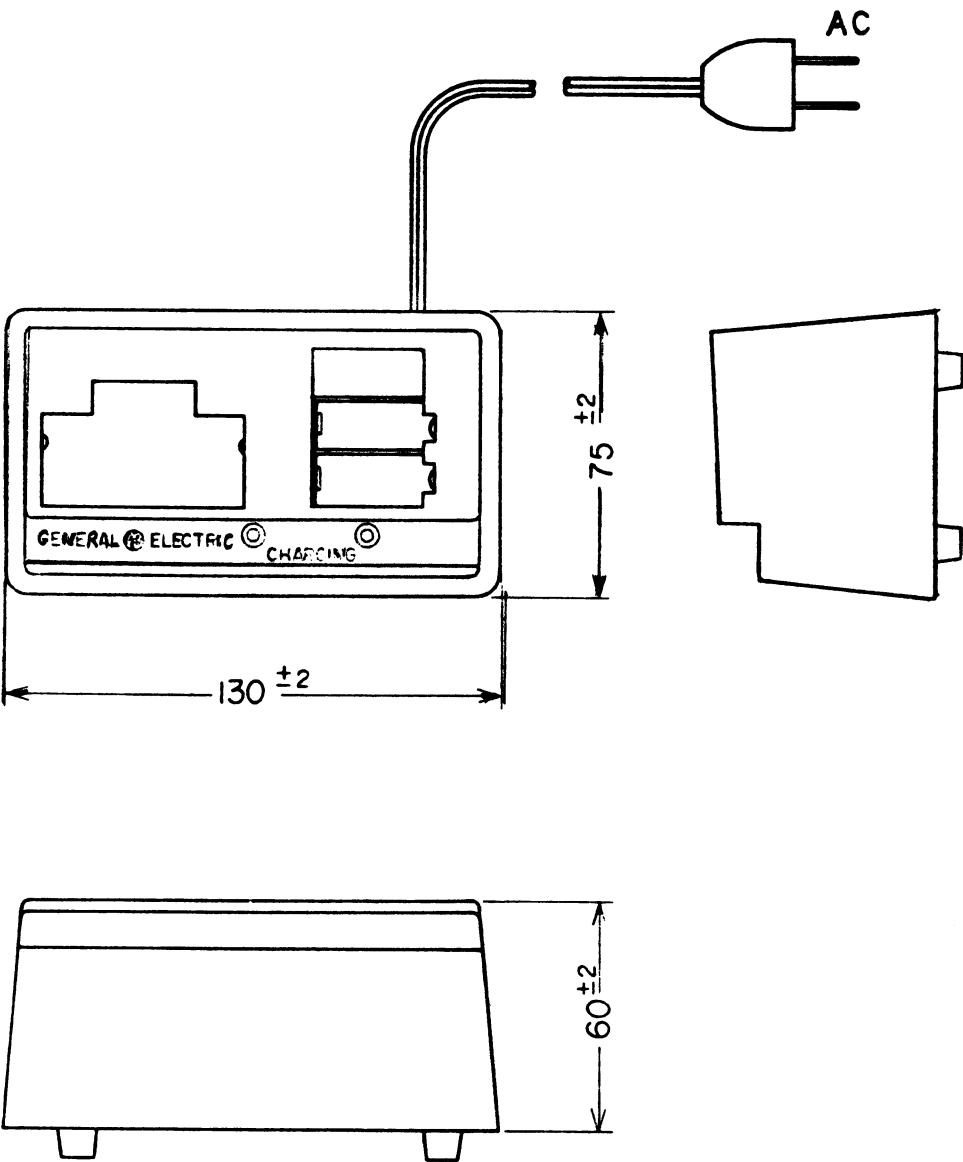
To gain access to the desk charger circuitry for servicing, remove the three Phillips-head screws in the bottom of the charger and lift off the bottom cover.

To remove the printed circuit board, remove the three screws holding the board to the housing. Lift the charging assembly out of the housing.

Quick Checks

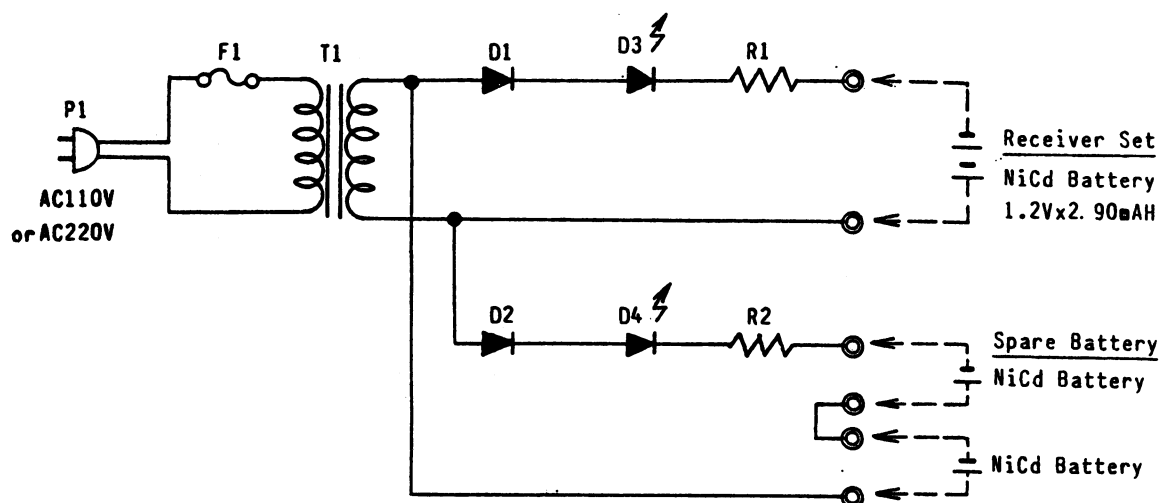
Should a service problem arise, the following checks should aid the service technician in locating the difficulty.

Symptom	Procedure
Batteries will not charge	<ol style="list-style-type: none"> 1. Check to see if LED indicator is on (UNIT OR BATTERY). 2. If an LED indicator is on, try known good batteries.



4 MG-2369E

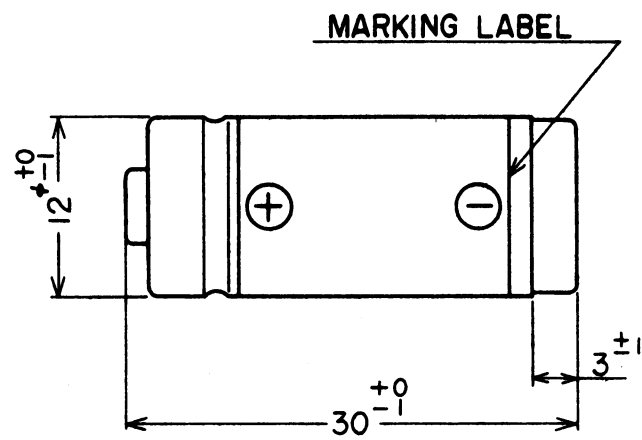
CHARGER DIMENSIONS



SYMBOL No.	NAME OF PARTS	DESCRIPTION	Q'TY
D1,D2	DIODE	10D1	2
D3,D4	LIGHT EMIT DIODE	SLP131B	2
P1	AC PLUG	TYPE	1
R1,R2	RESISTOR	(121 VAC 1/4W 390Ω) (242 VAC 1/4W 360Ω)	2
F1	FUSE	0.1A	1
T1	TRANSFORMER	(121 VAC R9163C) (242 VAC R9438)	1

4DC-2975E

SCHEMATIC DIAGRAM
& PARTS LISTS



4MG-237IE

BATTERY DIMENSIONS