



MAINTENANCE MANUAL

FOR

PROGRESS LINE PORTABLE EXTENDED BATTERY POWER SUPPLY

LBI-3192

Model

4EP19A10

SPECIFICATIONS

Power Supply Model 4EP19A10

Series HB-11-W (25-54MC) and HB-31-W (144-174MC)

Series HB-11-N (25-54MC) and HB-31-N (144-174MC)

Extended Battery Pack

(2) battery: 67.5 volts, G.E. Dwg. No. A-4031299-P1

(13) battery: 1.5 volts, G.E. Dwg. No. A-4031577-P1

Power Input	HB-11-N & HB-11-W	HB-31-N & HB-31-W
Standby	38 ma at 13.5 volts	46 ma at 13.5 volts
Receive	95 ma at 13.5 volts	103 ma at 13.5 volts
Transmit	850 ma at 1.25 volts 6 ma at 60 volts 51 ma at 120 volts	850 ma at 1.25 volts 6 ma at 60 volts 51 ma at 120 volts

CONTENTS

SPECIFICATIONS page i

GENERAL DESCRIPTION. page 1

BATTERY REPLACEMENT. page 1

MAINTENANCE. page 2

PARTS LIST page 2

ILLUSTRATIONS

Fig. 1 Outline Diagram(C-5496530). page 3

Fig. 2 Elementary Diagrams(B-5493182). page 5

These instructions do not purport to cover all details or variations in equipment nor to provide for every possible contingency to be met in connection with installation, operation, or maintenance.

Should further information be desired, or should particular problems arise which are not covered sufficiently for the purchaser's purposes, the matter should be referred to the nearest General Electric Company District Sales Office.

GENERAL ELECTRIC PROGRESS LINE
PORTABLE EXTENDED BATTERY PACK MODEL 4EP19A10

GENERAL DESCRIPTION

The General Electric Extended Battery Pack Model 4EP19A10 is designed for use with Series HB-11-W (25-54 mc), HB-31-W (144-174 mc), HB-11-N (25-54 mc) and HB-31-N (144-174 mc) Progress Line Portable radios. The Extended Battery Pack is interchangeable with the rechargeable nickel-cadmium battery pack.

The power supply case is attached to the main portable chassis with two catches. Electrical connections between the power supply and the portable is by plug and jack.

BATTERY REPLACEMENT

The Extended Battery Pack will operate for at least seven days before battery replacement is necessary. The pack consists of 13 "D" type 1.5 volt cells and two "B" type 67.5 volt cells.

To remove the batteries from the Extended Battery Pack follow the procedure outlined below:

1. Put the ON-OFF switch on the Control Unit in the OFF position.
2. Release the two catches which hold the battery pack on the portable case.
3. Unplug the extended battery pack from the main portable chassis.
4. Lay the extended battery pack down with the printed circuit boards facing upward.
5. The "B" batteries are now accessible for removal.
6. Use a screwdriver to release the "quarter-turn" fasteners holding the circuit boards down against the "D" cells.
7. Lift up the circuit boards, exposing the batteries, and remove the batteries from the case.
8. Reverse the procedure above when putting in new batteries.

MAINTENANCE

The battery-operated portable should be placed in operation as soon as possible after being received. If the portable is to be stored, the batteries should be removed and kept separately in a cool, dry place. The batteries have a normal shelf life of approximately six to eight months. If stored for too long they may leak electrolyte when placed into the equipment.

The portable, when stored, should be checked every three months. Operate the switches and mike button, and rotate the controls to keep the contacts clean of dust and corrosion.

PARTS LISTS EXTENDED BATTERY PACK MODEL 4EP19A10

SYMBOL	DESCRIPTION	G.E. DRAWING & PART NO.
--------	-------------	----------------------------

BATTERIES

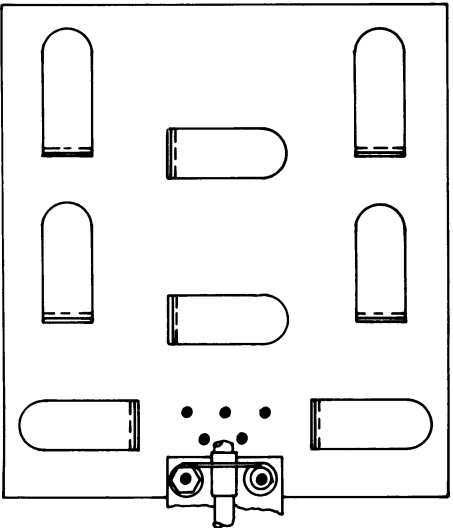
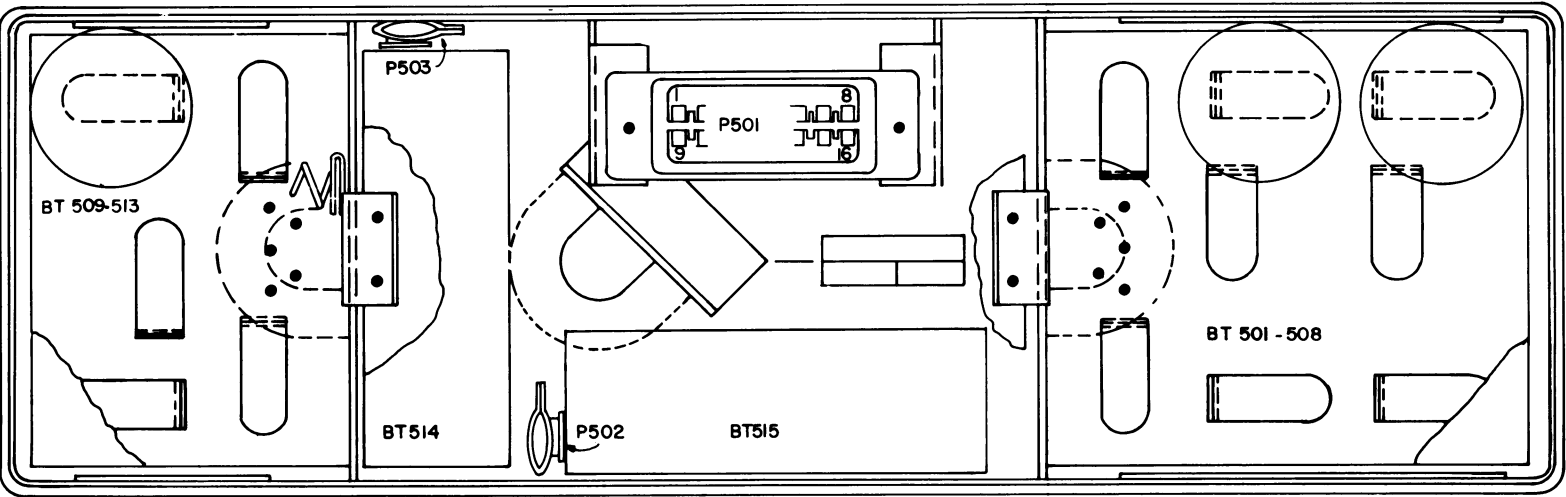
BT501 thru BT513	Dry battery, "D" size flashlight cell, 1.5 v. NEDA #13, leakproof design.	A-4031577-P1
------------------------	--	--------------

BT514 and BT515	45 #135 "Mini-Max" cells connected in series. 67.5 v, type "B", NEDA #200.	A-4031299-P1
-----------------------	---	--------------

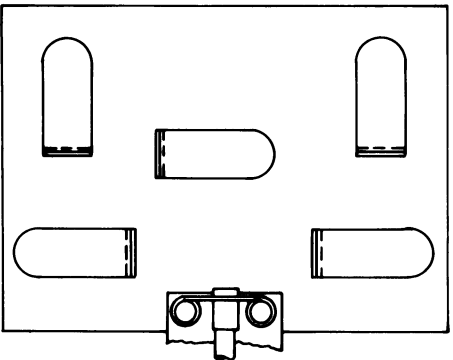
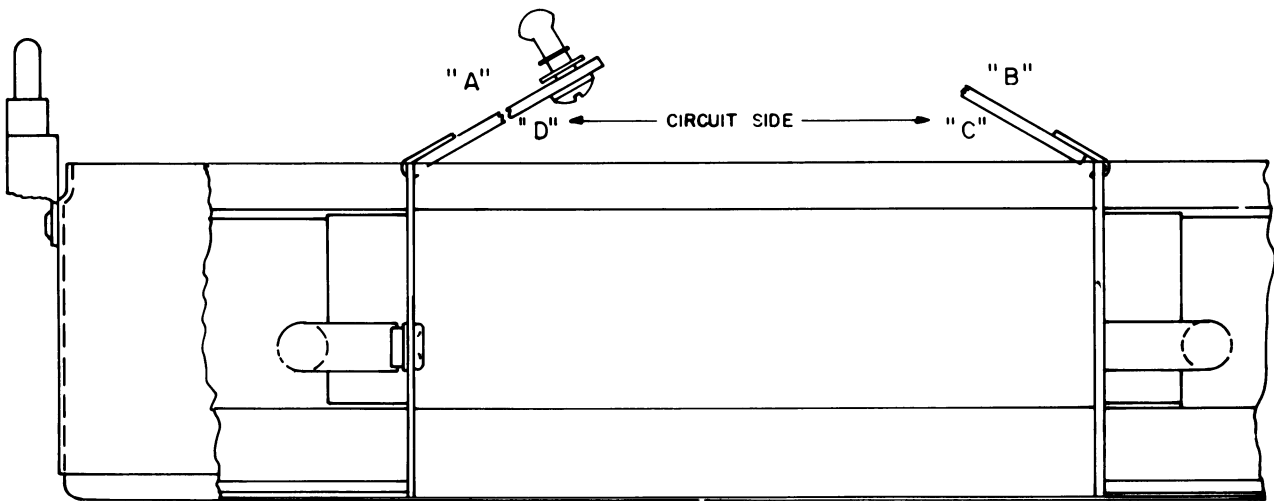
CONNECTORS

P501	Plug, 16 contacts, similar to Amphenol type Cat. #26-4100-16P	B-5491961-P2
------	---	--------------

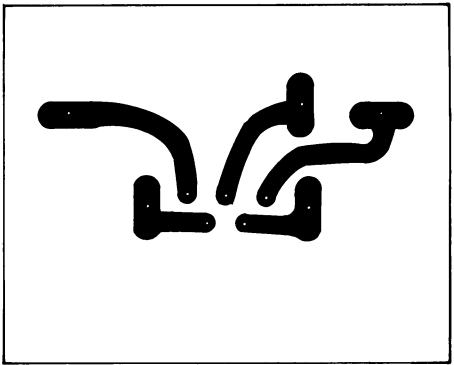
P502 and P503	Battery connector, with 2 black leads 5 inches long.	A-4034675-P1
---------------------	--	--------------



VIEW AT 'B'

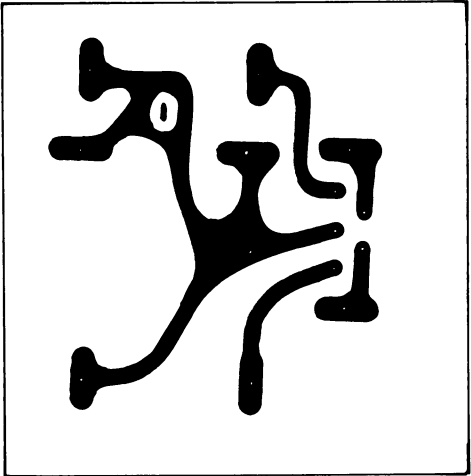


VIEW AT 'A'



VIEW AT 'D'

(B-5493002)



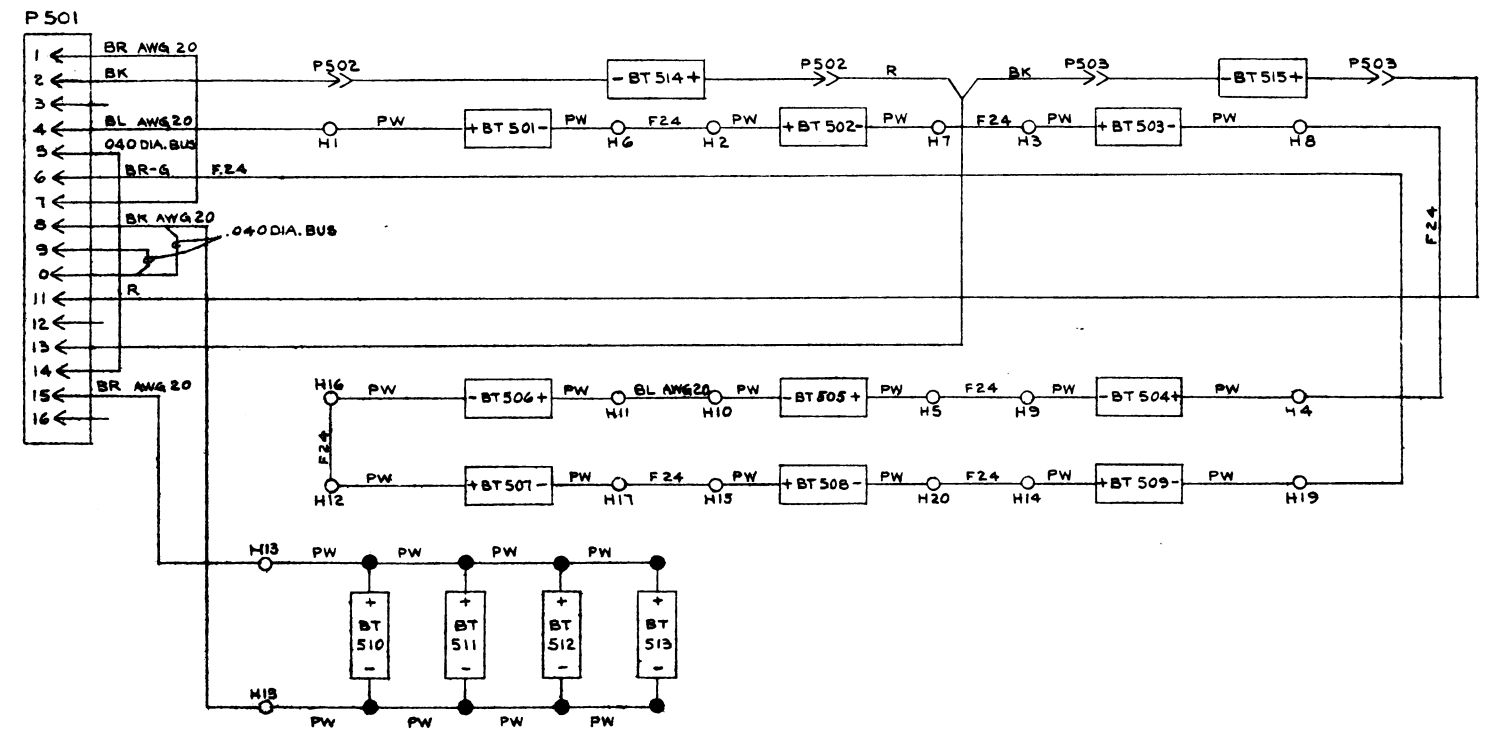
VIEW AT 'C'

(B-5493004)

Outline Diagram

PROGRESS LINE PORTABLE EXTENDED
BATTERY PACK POWER SUPPLY
MODEL 4EP19A10

(C-5496530, Rev. 0)



Elementary Diagram
 PROGRESS LINE PORTABLE EXTENDED
 BATTERY PACK POWER SUPPLY
 MODEL 4EP19A10