

INSTRUCTIONS
FOR
FAN KIT
PL-4038584-G1, G2, G3

Description	Page 1
Installation	Page 1
Parts List	Page 2
Installation Diagrams	
PL-4038584-G1	19B201897, Sheet 1
PL-4038584-G2, G3	11B201897, Sheet 2

DESCRIPTION

The PA tube(s) in transmitter types ET-21-A, ET-23-A, ET-24-A, and ET-48-A require cooling when the transmitters are rated for continuous duty. Fan Kits PL-4038584-G1, G2, G3 provide forced air cooling whenever the transmitter is keyed. The fan kit is mounted on the power supply chassis (type EP-4-A) of the transmitter types listed below. Maintenance instructions for the fan are included in the instructions for the power supply.

Fan Kit	Fan Kit	Fan Kit
PL-4038584-G1	PL-4038584-G2	PL-4038584-G3
ET-24-A(450-470 MC)	ET-21-A(144-174 MC) ET-23-A(25-54 MC)	ET-48-A(130-174 MC)

INSTALLATION

ET-24-A(PL-4038584-G1)

1. Install the fan as shown on Installation Diagram 19B201897, Sheet 1.
2. Pass the fan AC wires through hole H1 in the power supply chassis. Connect one wire TB503-1 and the other wire to TB503-3.
3. To operate the fan continuously when the transmitter is not being keyed, connect a jumper lead between terminals 2 and 3 on terminal board TB503.

ET-21-A, ET-23-A (PL-4038584-G2)
ET-48-A (PL-4038584-G3)

1. Install fan as shown on Installation Diagram 19B201897,
Sheet 2.

NOTE

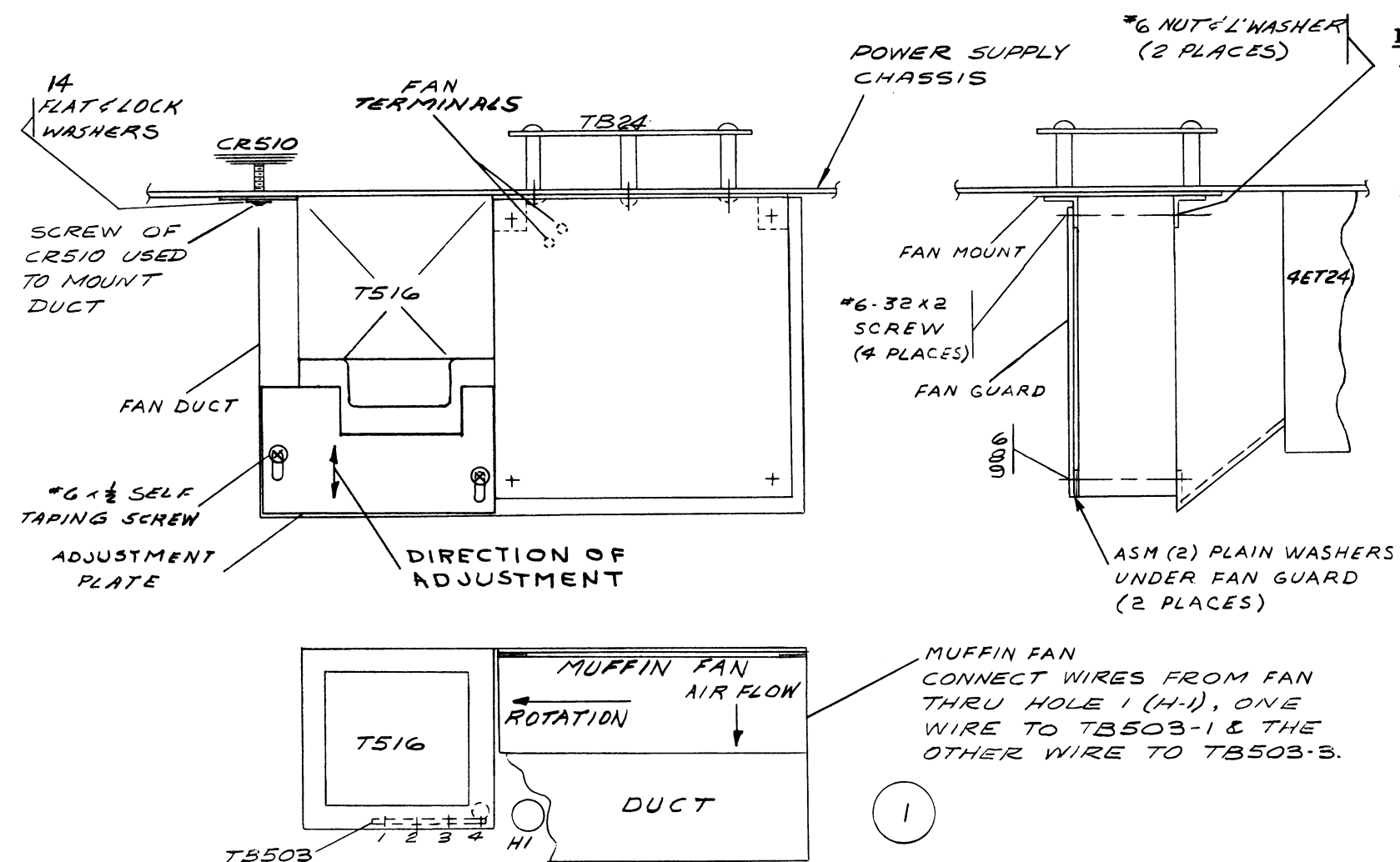
Shield (4029205) is used only on ET-23-A to
cool the 2E26 driver tube.

2 & 3. Same as steps 2 & 3 under ET-24-A above.

PARTS LIST

<u>SYMBOL</u>	<u>G-E PART NO.</u>	<u>DESCRIPTION</u>
BM502	5493477-P1	Fan Assembly: 115 VAC, 60 cps at 14 watts, single phase; sim to Rotron Gold Seal Venturi Muffin Fan.
	4038581-G1	Fan Guard (wire grill)
	4038582-G1	Fan Duct (4038584-G1 only)
	4038583-G1	Fan Mount
	19B204455-G1	Cover Assembly (4038584-G2, -G3)
	4029205-G2	Shield (4038584-G2 only)

COMMUNICATION PRODUCTS DEPARTMENT
GENERAL ELECTRIC COMPANY
LYNCHBURG, VIRGINIA



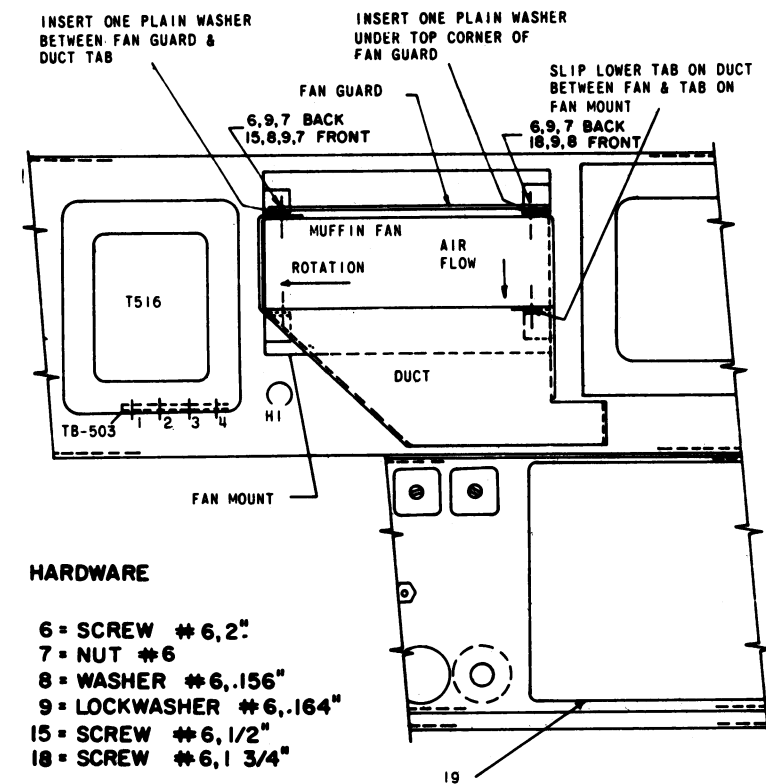
INSTRUCTIONS

1. **FOR FIELD INSTALLATION ONLY:**
 - A. REMOVE EXISTING BLOWER 5491493P1
 - B. REMOVE THE THREE EXISTING RUBBER GROMMETS, USED TO MOUNT (A) ABOVE, FROM THE POWER SUPPLY CHASSIS.
2. **FOR FIELD AND FACTORY INSTALLATION:**
 - A. REMOVE THE THREE SCREWS FROM THE FRONT SIDE OF THE CHASSIS USED TO SECURE COMPONENT BOARD TB24.
 - B. SOLDER WIRES TO TERMINALS ON FAN.
 - C. ATTACH MUFFIN FAN AND WIRE-MESH FAN GUARD TO THE FAN MOUNTING PLATE USING HARDWARE PROVIDED (NOTE DIRECTION OF AIR FLOW).
 - D. SECURE ASSEMBLY FROM STEP 2C TO THE POWER SUPPLY CHASSIS USING THE THREE SCREWS REMOVED IN STEP 2A. CONNECT LEADS AS SHOWN.
 - E. LOOSEN SCREW HOLDING CR510 TO POWER SUPPLY CHASSIS.
 - F. REMOVE SCREW HOLDING NAMEPLATE OF POWER SUPPLY NEXT TO THE SCREW HOLDING CR510 TO THE POWER SUPPLY CHASSIS.
 - G. CHECK DUCT TO INSURE SPEED NUTS ARE LOCATED PROPERLY OVER FAN MOUNTING HOLES. PLACE DUCT IN POSITION, SLIDING BRACKET UNDER SCREW LOOSENED IN STEP 2E. SECURE FAN TO DUCT USING HARDWARE PROVIDED.
 - H. TIGHTEN SCREW SECURING BRACKET OF DUCT TO POWER SUPPLY CHASSIS.
 - I. MOUNT ADJUSTMENT PLATE USING #6 x 1/2 SELF TAPPING SCREWS PROVIDED. ADJUST SO THAT PLATE FITS SNUGLY AGAINST T516.

Installation Diagram

FAN KIT
PL-4038584-G1

(19B201897, Sh. 1, Rev. 4)



INSTRUCTIONS

For Field Installation:

- Remove the three screws from the front side of the chassis used to secure component board TB24.
- Solder wires to terminals on fan.
- Remove the transmitter from the chassis by removing two of the four mtg. screws.
- Secure fan mount (4038583-G1) by using screws removed in Step A.
- Attach the muffin fan, fan guard and fan duct to the fan mount in accordance with drawing. Narrow edge of fan guard (4038581-G1) should be placed at bottom of fan. All screws should be assembled loosely prior to tightening any one nut.
- Connect wires from fan thru hole I (H-I), one wire to TB503-1 and the other wire to TB503-3.
- Replace standard shield (4029205-G1) on transmitter with shield (4029205-G2).
- Secure transmitter to frame with the four retaining screws.

Installation Diagram

FAN KIT
PL-4038584-G2, -G3

(19B201897, Sh. 2, Rev. 2)