



# INSTALLATION of PORTA • MOBIL TWO-WAY RADIO

with  
Extended Local Control Unit

The General Electric Porta-Mobil 2-Way FM Radio with Extended Local Control is designed for use on a wide variety of vehicles. The 10- or optional 20-foot control cable allows the extended local control unit to be mounted in a convenient position for the operator.

LB1-3672A  
DF-9018

## 1 TRANSMITTER-RECEIVER INSTALLATION

The transmitter-receiver portion of the two-way radio can be mounted horizontally, or vertically. (Figure 1).

Use the mounting frame as a template to locate holes, and drill mounting holes with a #25 (5/32-inch) drill. Attach the frame to the mounting surface with #10 x 5/8-inch screws and lockwashers. Slide radio into frame and latch. An optional bracket with lock is available to lock the radio into the mounting frame to prevent unauthorized removal of the radio.

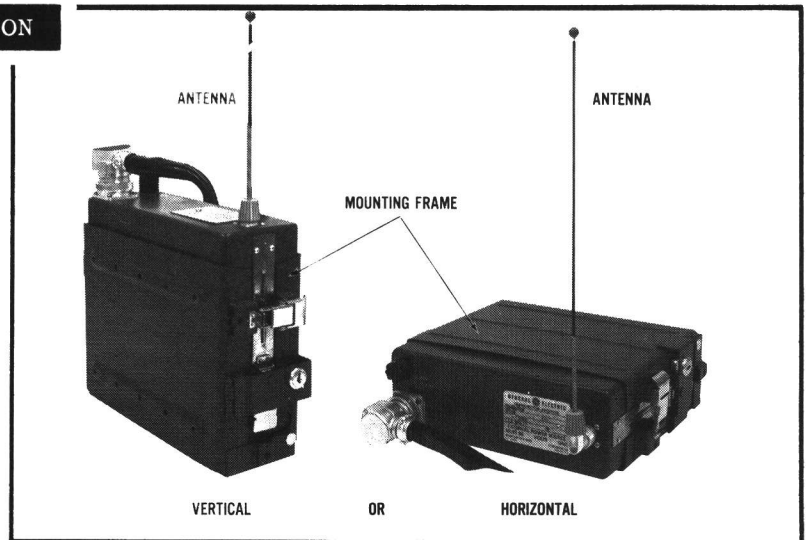


Figure 1- Transmitter-Receiver Installation

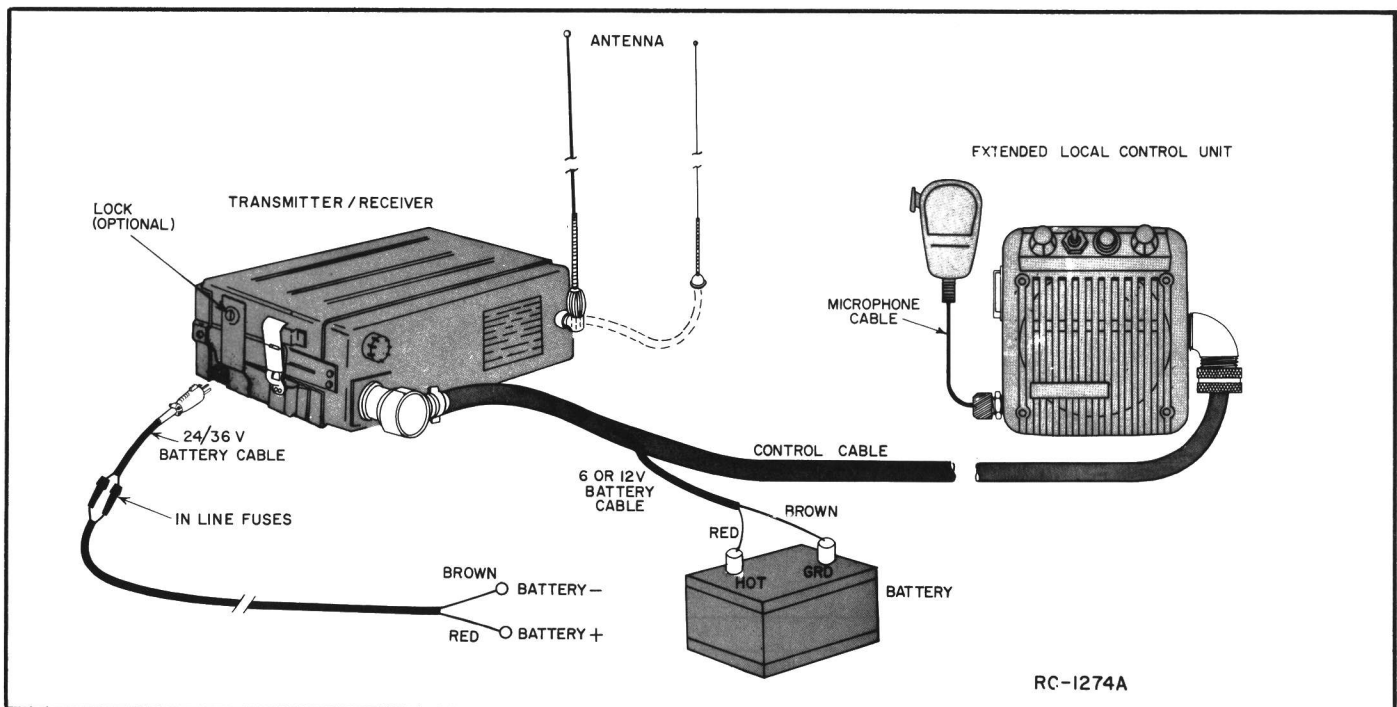


Figure 2- Cabling Diagram

## 2 CONTROL CABLE ROUTING

After mounting the transmitter-receiver, connect cable plug to matching socket on the transmitter-receiver. Route the cable to the control unit location, keeping cable away from sharp edges, exhaust pipes, and any moving parts on the vehicle. Use existing holes in the vehicle for channeling cable. If a hole must be made for passage of the cable, drill a 7/8-inch hole and insert a rubber grommet.

### 3 MICROPHONE AND CONTROL CABLE CONNECTIONS

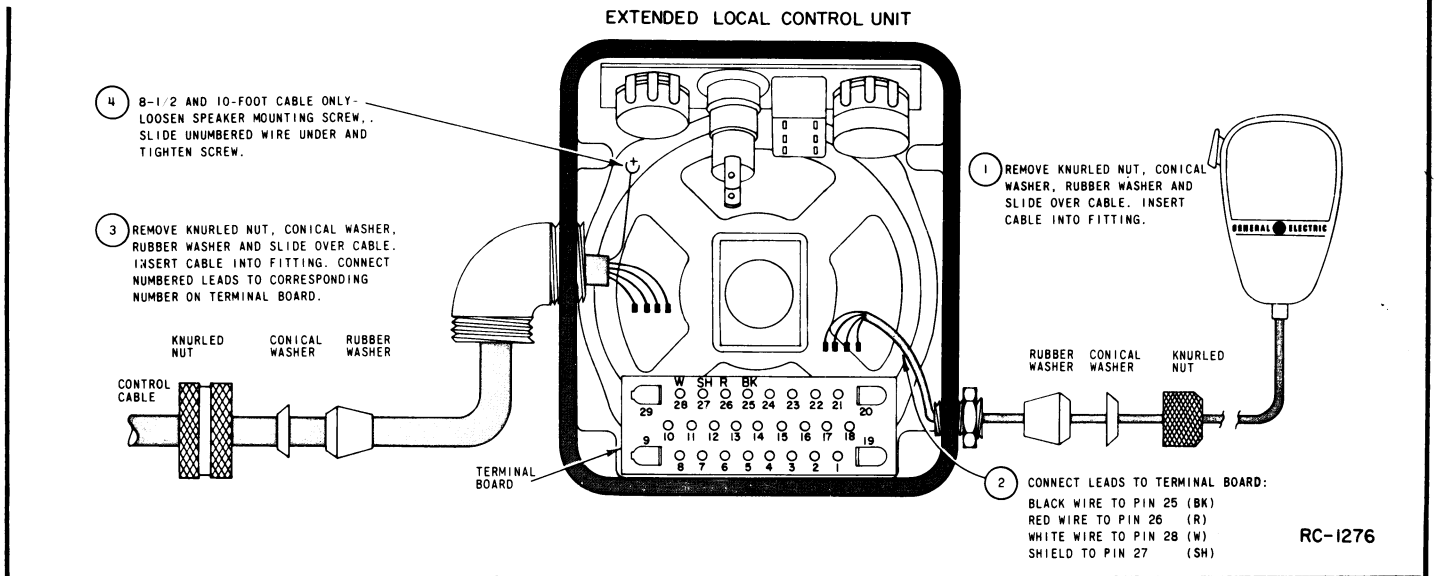


Figure 3- Cable Connections

### 4 EXTENDED LOCAL CONTROL UNIT INSTALLATION

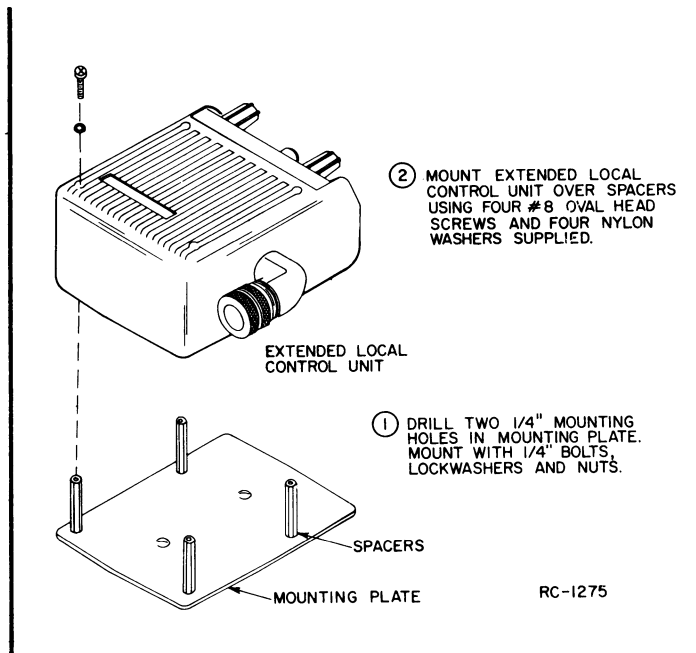


Figure 4- Extended Local Control Unit Installation

### 6 ANTENNA INSTALLATION

If the screw-on type antenna is supplied with the radio, screw antenna directly into antenna jack on the transmitter-receiver. If radio is mounted horizontally, attach right angle fitting to jack, then screw antenna into socket. For mobile antennas, install antenna following instruction packaged with the antenna. Antenna must be installed in accordance with good engineering practice for optimum results.

#### PLACING THE TWO-WAY RADIO IN OPERATION

After installation is completed, an electronics technician with a 1st or 2nd Class FCC Radiotelephone license must make the final transmitter and receiver adjustments as described in the MAINTENANCE MANUAL. Be sure a RADIO TRANSMITTER IDENTIFICATION form (FCC Form 452-C or General Electric Form ECP-82) is filled out and attached to the transmitter.

**GENERAL ELECTRIC**