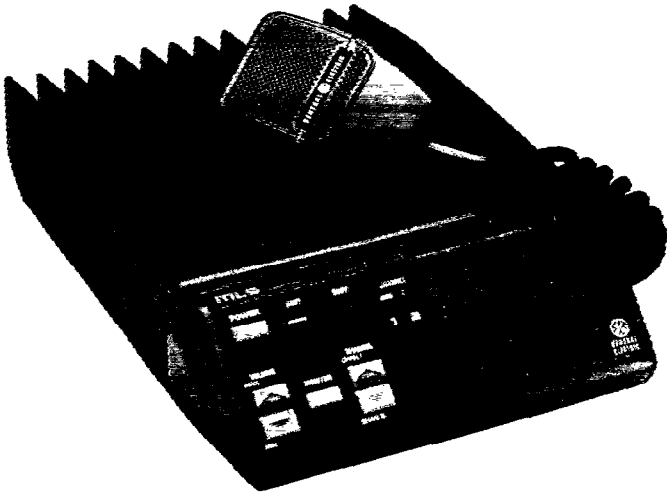


Mobile Communications

MLS
403-420 MHz, 450-470 MHz
40 WATTS
TWO-WAY FM MOBILE RADIO
COMBINATION



INCLUDES

TRANSMITTER/RECEIVER	LBI-38427
SYSTEM CONTROL/SYNTHESIZER	LBI-38428
FRONT PANEL/CONTROL UNIT	LBI-38424
SERVICE SECTION	LBI-38429

TABLE OF CONTENTS

	<u>Page</u>
SPECIFICATIONS.....	iii
DESCRIPTION.....	1
OPERATION	
Controls	3
Indicators	4
Using the Radio	6
Scan Operation	6
To Program Scan Channels and Select Priority	7
Using the Optional Eight (8) or Sixteen (16) Channel Radio (With Scan)	8
MAINTENANCE.....	9
DTMF Microphone Modification	9
INTERCONNECTION DIAGRAM.....	11
ILLUSTRATED MECHANICAL PARTS BREAKDOWN	12
INTERCONNECTION KIT (JHM-456S40A/B)	14

ILLUSTRATIONS

Figure 1 - Mobile Layout Diagram.....	2
Figure 2 - Two (2) Channel Radio	4
Figure 3 - Eight (8) Channel Radio (Without Scan/With Scan).....	5
Figure 4 - Sixteen (16) Channel Radio (Without Scan/With Scan).....	5

CAUTION

Although the highest DC voltage in this mobile equipment is applied by the vehicle battery, high currents may be drawn under short circuit conditions. These currents can possibly heat objects such as tools, rings, watchbands...etc., enough to cause burns. Be careful when working near energized circuits!

High-level RF energy in the transmitter Power Amplifier assembly can cause RF burns upon contact. Keep away from these circuits when the transmitter is energized!

NOTE

This equipment has been tested and found to comply with the technical specifications in Part 15, subpart J of the FCC rules for a Class A and Class B computing device.

SPECIFICATIONS

SYSTEM

<u>Radio Type FCC#</u>	MLSU141 (403-420 MHz) MLSU241 (450-470 MHz)
<u>Frequency Range:</u>	
Transmitter	403 to 420 MHz, 450 to 470 MHz
Receiver	403 to 420 MHz, 450 to 470 MHz
Transmitter	Two Frequency Spread 10 MHz
Receiver	Two Frequency Spread 5.0 MHz
<u>Battery Drain:</u>	
Receiver (13.8 VDC)	
Off	0.03 Amperes
Squelched	0.70 Amperes nominal
Unsquelched	1.15 Amperes (4 Watts audio)
Transmitter (13.6 VDC)	14.0 Amperes (40 Watts RF)
<u>Frequency Stability</u>	± 5 ppm / ± 2.5 ppm
<u>Channel Spacing</u>	25 KHz
<u>Frequency Capacity</u>	16 Channels maximum
<u>Temperature Range</u>	-30°C (-22°F) to +60°C (+140°F)
<u>Duty Cycle</u>	80% Receive, 20% Transmit
<u>Dimensions (H X W X D)</u> (Less Accessories)	5.5 cm X 18.5 cm X 24 cm
<u>Weight</u> (Less Accessories)	2.3 kg
TRANSMITTER	
<u>Power Output</u>	40 Watts
<u>Conducted Spurious</u>	-62 dB
<u>Modulation</u>	± 5.0 KHz
<u>Audio Sensitivity</u>	85 millivolts ± 3 dB
<u>Audio Frequency Characteristics (Per RS-152B)</u>	within +1 dB to -3 dB of 6 dB /Octave pre-emphasis from 300 Hz to 2500 Hz per EIA standard and +1 dB to -4.5 dB at 3000 Hz

SPECIFICATIONS*
(Continued)

<u>Distortion</u>	Less than 3% (1000 Hz) Less than 5% (300 Hz to 3000 Hz)
<u>Deviation Symmetry</u>	±0.5 KHz (maximum)
<u>RF Output Impedance</u>	50 ohms
<u>Carrier Attack Time</u>	30 milliseconds (maximum)
<u>Audio Attack Time</u>	50 milliseconds (maximum)
RECEIVER	
<u>Audio Ampl Output</u> (4-ohm speaker)	4 Watts (less than 5% distortion) EIA
<u>Sensitivity:</u> 12 dB SINAD (EIA method) 20 dB (Quieting method)	0.35 microvolts 0.40 microvolts
<u>Selectivity</u> (EIA two-signal method)	-70 dB ± 25 KHz
<u>Spurious Response</u>	-70 dB
<u>Intermodulation</u>	-70 dB
<u>Modulation Acceptance</u>	±7 KHz
<u>Frequency Response</u>	Within +2.0 dB and -8 dB of a standard 6 dB/octave de-emphasis curve from 300 Hz to 3000 Hz EIA
<u>RF Input Impedance</u>	50 ohms
<u>Receiver Attack Time</u>	90 milliseconds, typical 150 Milliseconds, maximum
<u>Receiver Recovery Time</u>	100 Milliseconds, typical 250 milliseconds, maximum

* These specifications are intended primarily of service personnel. Refer to the appropriate Specification Sheet for the complete specifications.

DESCRIPTION

The General Electric MLS series mobile radio is a synthesized, radio, utilizing microcomputer technology to provide high reliability, high quality and high performance in two-way, FM, mobile communications. The MLSU141 and MLSU241 radios operate in the 403 to 420 MHz and the 450 to 470 MHz frequency ranges respectively and provide an RF power output of 40 watts with an allowable channel separation of 10 MHz transmit and 5 MHz receive. The channel separation does not apply in repeater talk-around applications because the transmit and receiver frequencies are the same.

The small size of the MLS makes it ideal for front mounting in conventional vehicles, with all operating controls and indicators located on the Control panel. The standard radio with Control panel is equipped with the following:

- Microcomputer control
- RF channel synthesizer
- Up to 16 RF channels
- LED channel display
- Channel Guard (CTCSS or DCG)
- Carrier Control Timer (CCT)
- $\pm 0.0005\%$ (5 PPM) frequency stability

The radio circuitry consists of a System Control/Frequency Synthesizer board (A801), a Transmitter/Receiver Board (A802) and a Front Panel/Control Unit (A803 and A804).

The Circuitry also consists of Control Indicator Panel (A804), an internal speaker, an antenna jack, a connector for the microphone and a power supply cable (refer to Figure 1 - Mobile Layout Diagram).

No power supply is used since the highest supply voltage required for the operation of the radio is provided by the vehicle battery. The radio is designed for operation in a 12-volt, negative ground vehicular system or as an AC power mobile.

Access to each circuit board is easily achieved by removing four (4) screws in the rear of the top and bottom covers then removing each cover. All tuning controls are also accessible with the covers removed.

Access to the Control and Indicator circuitry can be achieved by removing the four (4) screws securing the front panel to the chassis.

Transmitter

The transmitter circuit consists of a broadband, fixed-tuned driver module and a power amplifier.

The RF power output level is internally adjustable for related power output. Once the level is set, a sensing control circuit holds the power constant over the temperature and/or voltage variations within specified limits.

Receiver

The dual conversion receive circuit consists of a 403-420 / 450-470 MHz front end section and two mixer/IF sections operating at 82.2 MHz and 455 KHz. The receive circuit also contains a squelch and an audio section. The audio section provides a 4-Watt audio output into a 4-ohm load (internal speaker).

Frequency Synthesizer

The synthesizer drives the transmit circuit exciter and the receive circuit first mixer and consists of a synthesizer chip, a prescaler, a reference oscillator and the voltage controlled oscillators (VCO's). The synthesized frequency is controlled by the personality EEPROM and applied to the Transmitter/Receiver board.

An Electrically Erasable PROM (EEPROM), on the System Control and Frequency Synthesizer Board (A801) stores the binary data for the transmit and receive frequencies, Channel Guard tones, Digital codes and CCT timing periods. The EEPROM is field programmable and each channel can be individually programmed or reprogrammed for the desired transmit and receive frequencies, CG tones, digital codes or CCT timing.

Control Panel

The Control Panel consists of the front panel housing, an internal speaker and a plug-in module (A804) which determines the number of channels (2 to 16) and mode of operation (with or without scan). Refer to Maintenance Manual LBI-38424, listed in the Table of Contents of this publication. The panel is made of highly durable plastic with rounded corners and recessed controls and indicators for passenger safety requirements (refer to the OPERATION section for a description of the Control and Indicator functions).

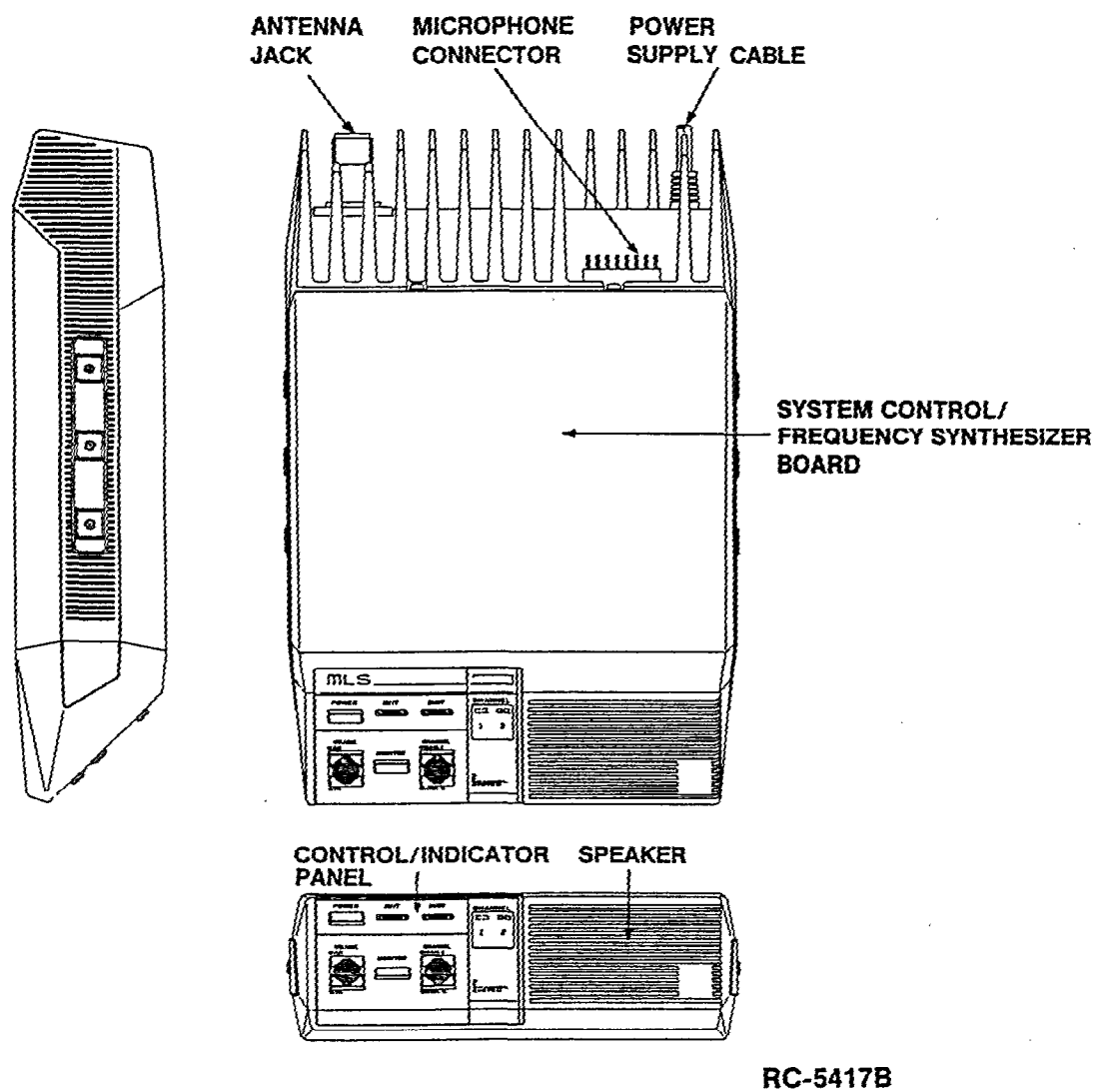


Figure 1 - MLS UHF Mobile Two-Way FM Radio

There are five (5) different optional interchangeable control panels available for selecting a two channel radio, an eight (8) or sixteen (16) Channel radio. The five control panel are as follows:

- Option MK1J: Two (2) Channel Without Scan (19A705800P100)
- Option MK1L: Eight (8) Channel Without Scan (19A705800P101)
- Option MK1N Eight (8) Channel With Scan (19A705800P102)
- Option MK1P: Sixteen (16) Channel Without Scan (19A705800P103)
- Option MK1R: Sixteen (16) Channel with Scan (19A705800P104)

CAUTION

Optional Control Panels 19A705800P100 thru P104 are for use in MLS radios 19A705800P1 thru P7 **ONLY**. They are NOT compatible with the 19A704991() series MLS radios. MLS radios 19A704991P1 thru P7 use Control Panels 19A704991P101 thru 19A704991P104 **ONLY**.

Microphone

The mobile radio uses a dynamic microphone with a built-in transistorized pre-amplifier. The microphone is housed in a sturdy case and the extendable coiled cord plugs into a jack provided at the back of the radio. The microphone is secured to the radio by means of a strain relief hook on the microphone cable.

Hookswitch

A hookswitch is provided with the radio to hold the microphone. Removing the microphone from the hookswitch disables the Channel guard, enabling the operator to monitor the channel before sending a message. Removing the microphone while in the SCAN mode, will also disable SCAN until the microphone is placed back into the hookswitch.

Channel Guard

Channel Guard provides a means of restricting calls to specific radios through the use of a continuous tone or digitally coded squelch system (CTCSS or DCG). Tone Frequencies range from 67.0 Hz to 210.7 Hz. 33 standard tones and 104 unique digital codes are available.

Programming

The EEPROM allows the radio to be programmed or reprogrammed as needed to adapt to changing system requirements. RF frequencies, Channel Guard tones, digital codes, and CCT can be reprogrammed.

The EEPROM is programmed through the radio MIC connector (J701) using an IBM compatible PC and special cable. Programming instructions are provided in the respective programming manual.

OPERATION

This section provides a description of the Control and Indicator functions as well as the basic procedures for transmitting and receiving messages. Complete operating instructions for the radio are provided in the respective Operator's Manual.

Controls

The radio control panel contains the VOLUME control, the POWER on/off switch, the MONITOR switch and the CHANNEL select switch. The switch functions are as follows:

POWER

A momentary type switch to turn the radio on or off. Press once to turn the radio on; press again to turn the radio off. Power ON is indicated by an illuminated channel number on the system module.

VOLUME

Two momentary type switches to adjust the volume. Press and hold the MAX (up arrow) to increase the volume. Press and hold the MIN (down arrow) to decrease the volume.

MONITOR

A momentary type switch to allow you to monitor the selected channel before transmitting a message. It disables Channel Guard and squelch and will allow you to hear noise if the channel is not busy. This may be convenient when setting the volume to the desired listening level.

CHANNEL

Two momentary push type switches. Press CHAN 1 (up arrow) to select channel 1; press CHAN 2 (down arrow) to select channel 2. The selected channel number will be illuminated on the control module.

With an eight or sixteen channel radio two momentary type switches select channels electronically. Press and hold

the ADD switch to increase the Channel number; press and hold the DELETE switch to decrease the channel number. The selected channel is displayed by a 7-segment display.

ADD When used in conjunction with the SCAN switch, adds channels to the scan list.

DELETE When used in conjunction with the SCAN switch, deletes channels from the scan list.

SCAN A momentary type switch to turn the scan function on or off. When used in conjunction with the CHANNEL switch it enables the ADD/DELETE function to allow the scan list to be modified. When turned on, the scan indicator is illuminated.

INDICATORS

XMIT (Transmit) Lights when your message to being transmitted.

BUSY Lights when the channel is in use.

CHANNEL

1 2

Lights to indicate which channel has been selected.

P1

When lit, indicates that the channel displayed is a Priority 1 scan channel.

P2

When lit, indicates that the channel displayed is a Priority 2 scan channel.

S

When lit, indicates that the channel displayed is a non-priority scan channel.

SCAN

When lit, indicates that the radio is operating in the scan mode.

3

The channel indicator displays the following conditions:

- When scan is off, the selected channel is shown.
- When scan is on, the last pre-scan selected channel is shown when no signal is being received. When a scan channel is being received and audio is present in the speaker, the received channel is shown.

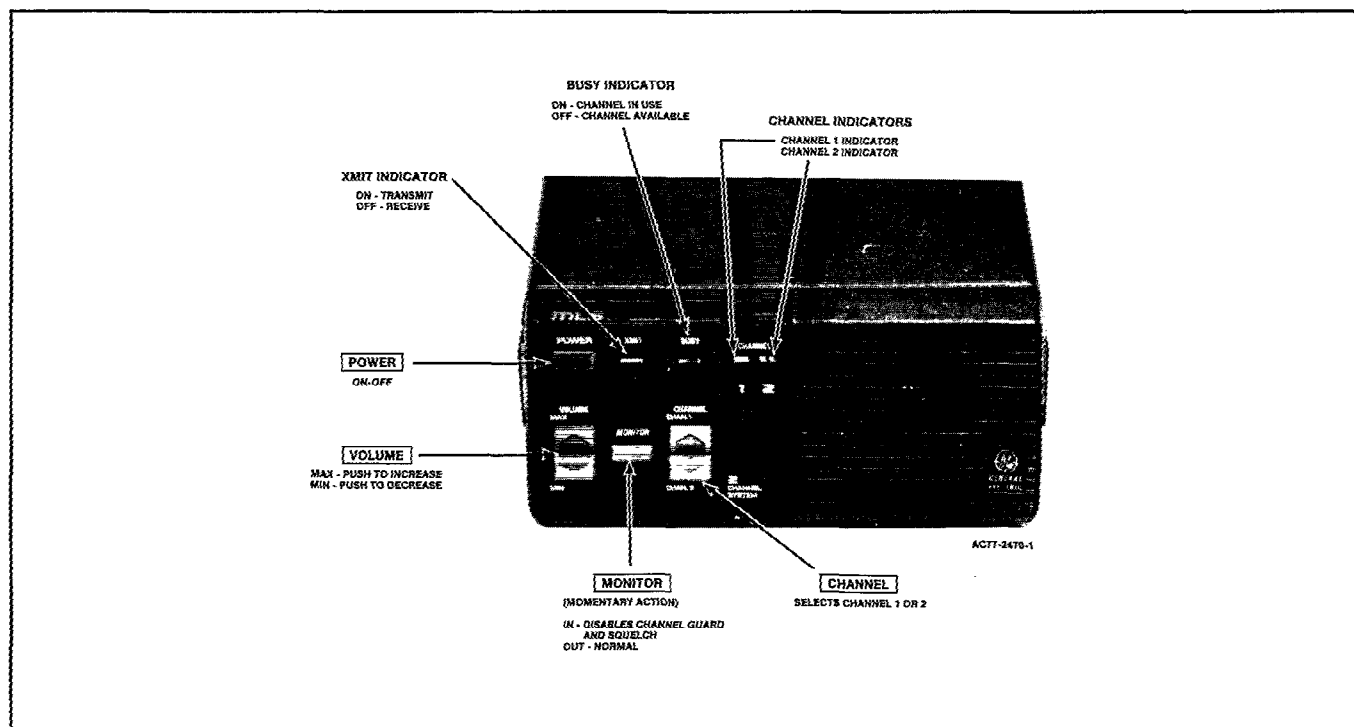


Figure 2 - Two Channel Radio

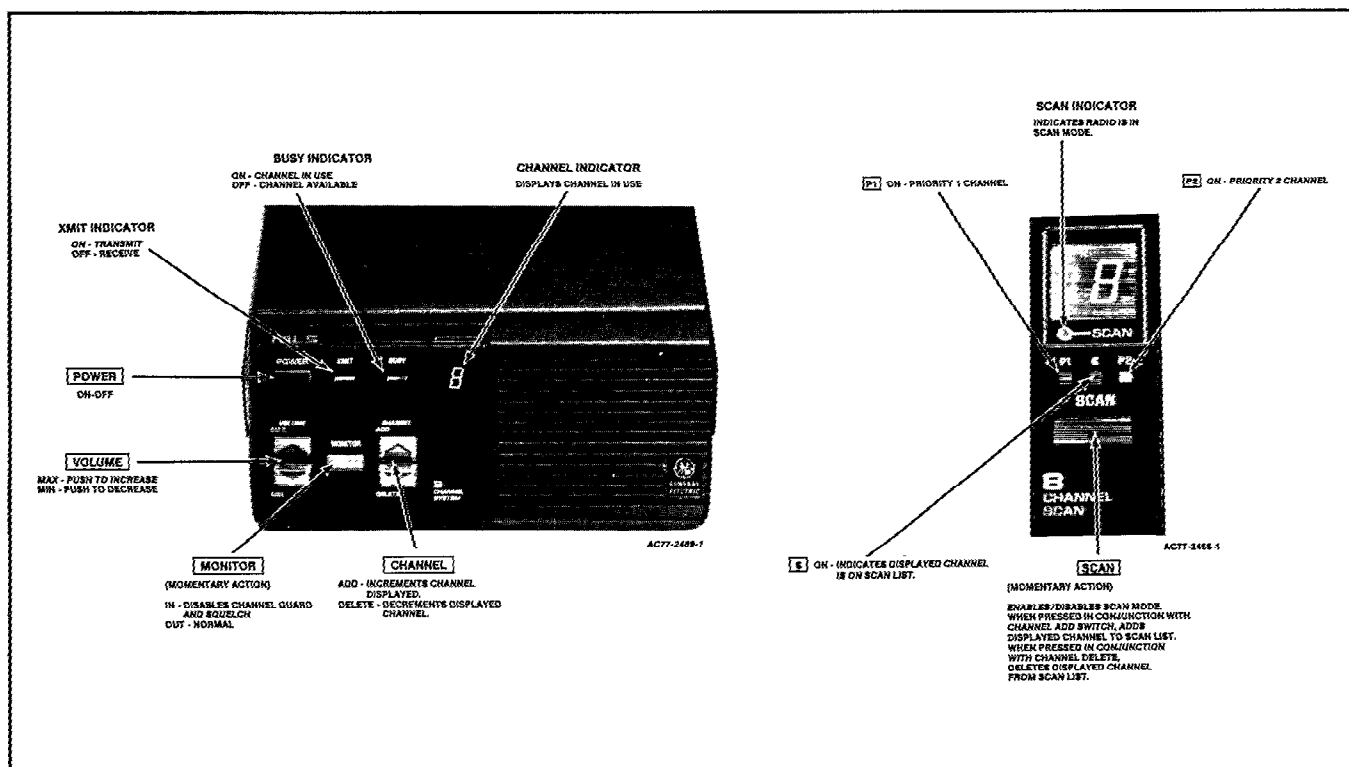


Figure 3 - Eight Channel Radio Without Scan/With Scan

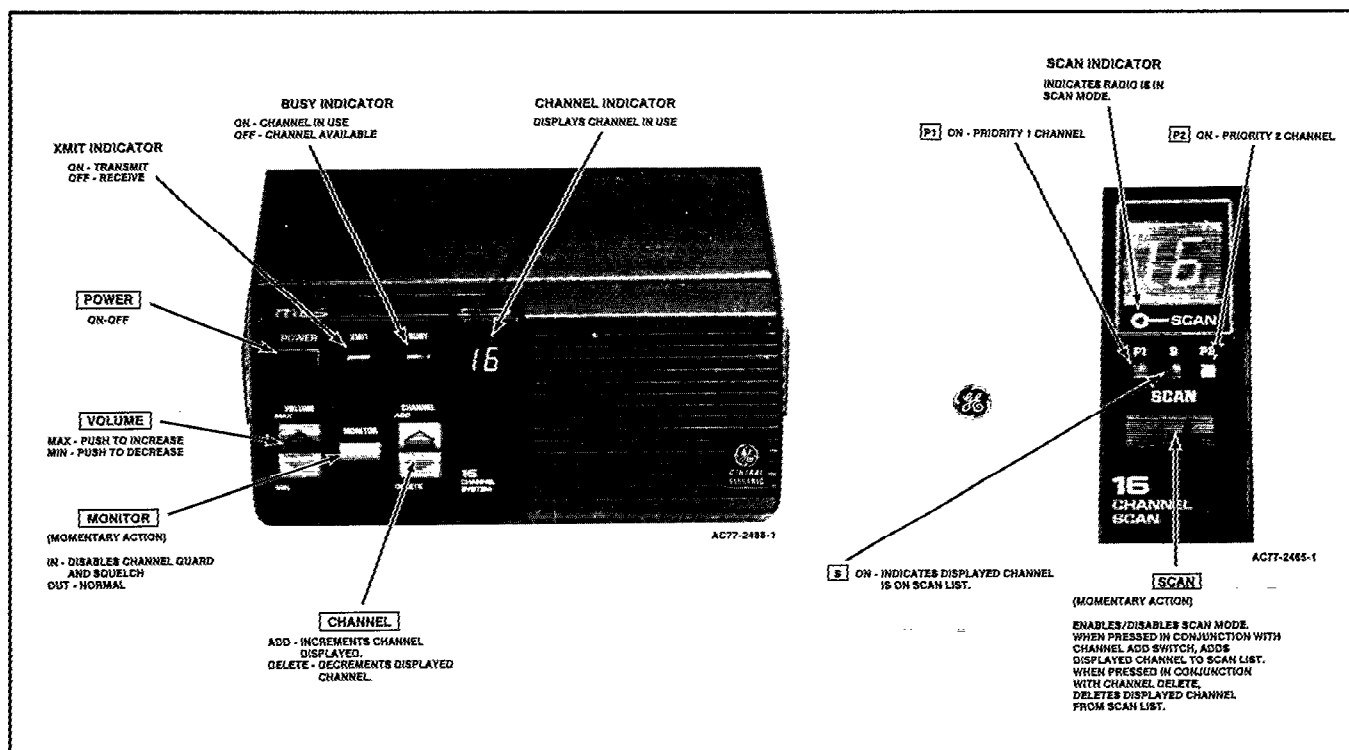


Figure 4 - Sixteen Channel Radio Without Scan/With Scan

Using the Radio (Two (2) Channel)**To Receive a Message:**

1. Turn the radio on (channel indicator lit). If not, press Power switch.
2. Select the desired channel by pressing either the 1 or 2 switch.
3. Press and hold MONITOR switch and then adjust VOLUME controls for the desired listening level. Release MONITOR switch.
4. Radio is now ready to receive a message.

To Transmit A Message:

1. Confirm that the radio is turned on (channel indicator lit). If not, press POWER switch.
2. Select the desired channel by pressing either the 1 or 2 switch.
3. Press and hold MONITOR switch and then adjust VOLUME controls for the desired listening level. Release MONITOR switch.
4. Decide what you want to say. If you intend a lengthy message (or several messages) the vehicle engine should be running to maintain the battery charge.
5. Observe the BUSY indicator and press the MONITOR switch to assure that the channel is not in use.
6. Remove microphone from hookswitch, press the PTT switch and identify yourself. The XMIT indicator will light each time the PTT switch is pressed.
7. Release the PTT switch and wait for an answer to your call. Then, complete your message.

NOTE

Always speak in a normal voice. Hold the microphone cupped in your hand and touching your cheek lightly. Speak across the face of your microphone, not directly into it. Shouting will actually reduce your radio range, so do not speak any louder than normal.

USING THE EIGHT (8) OR SIXTEEN (16) CHANNEL RADIO (WITHOUT SCAN)**To Receive a Message:**

1. Turn the radio on (channel indicator lit). If not, press POWER switch.
2. Select the desired channel by pressing either the ADD or DELETE switch.
3. Press and hold MONITOR switch and then adjust the VOLUME controls for the desired listening level. Release MONITOR switch.
4. Radio is now ready to receive a message.

To Transmit A Message:

1. Confirm that the radio is turned on (channel indicator lit). If not, press POWER switch.
2. Select the desired channel by pressing either the ADD or DELETE switch.
3. Press and hold MONITOR switch and then adjust the VOLUME controls for the desired listening level. Release MONITOR switch.
4. Decide what you want to say. If you intend a lengthy message (or several messages) the vehicle engine should be running to maintain the battery charge.
5. Observe the BUSY indicator and press the MONITOR switch to assure that the channel is not in use.
6. Remove the microphone from the hookswitch, press the PTT switch and identify yourself. The XMIT indicator will light each time the PTT switch is pressed.
7. Release the PTT switch and wait for an answer to your call. Then, complete your message.

SCAN OPERATION

The SCAN function allows monitoring of up to eight or sixteen receive channels (depending upon which control module is being used). The scanned channels may be any frequency within the frequency band limits of the radio and may be Channel Guard protected. The radio message will then be received only if the correct channel Guard signal is present.

Any channel may be scanned with or without priority level. One channel may be programmed for Priority 1 (P1) and another for Priority 2 (P2) with any or all remaining programmed channels being scanned as non-priority (S)

Receive Scan Rate

The scan rate for the radio will vary depending upon the number of channels programmed into the scan memory and whether or not Channel Guard is programmed. For a sixteen channel radio the scan rate will vary from 1.1 to 4.4 seconds for non-priority channels and 0.3 to 1.2 seconds for Priority 1 and 2 channels. The scan rate will be faster when fewer channels are programmed into scan memory.

Scan operation will be determined by the following conditions:

- Priority 1, and Priority 2 and Non-Priority Programmed*

The Priority 1, Priority 2 and up to six (6) remaining channels in an eight (8) channel radio or fourteen (14) channels in a sixteen (16) channel radio will be scanned. Once a carrier is detected (or correct Channel Guard tone is decoded) the digital display will indicate the channel. Sampling of the Priority 1 and Priority 2 channels continues while receiving a message on a non-priority channel. Should a Priority 1 or Priority 2 channel carrier (and correct Channel Guard) be detected while a non-priority channel is being received, the applicable indicator (P1 or P2) lights and the channel is switched to the Priority 1 or 2 channel, regardless of what is being received on the non-priority channel.

If a Priority 2 channel is detected, sampling of the Priority 1 channel continues. Once a carrier (and correct Channel Guard is detected on the Priority 1 channel, the channel is switched to the Priority 1 channel regardless of what is being received on another channel (Non-priority or Priority 2). No sampling occurs during transmit or if a Priority 1 channel is receiving.

- Non-Priority Programmed:

Up to eight/sixteen (8/16) non-priority channels may be scanned. Once a carrier is detected (or correct Channel Guard tone is decoded) the digital display will indicate the channel. Scan will stop and remain on the channel until the carrier disappears; after a few seconds scanning resumes. The channels will be scanned in descending order.

NOTE

* The rate the P1 and P2 channels are sampled while listening to a non-priority channel depends whether RF carrier is present or not. If no carrier is present on P1 or P2, the scan rate is fast. If carrier is detected but incorrect Channel Guard is present, the rate slows considerably. This prevents the non-priority signal from being badly distorted by the larger mute times needed to detect Channel Guard. If Channel Guard is not programmed for P1 or P2 the scan sampling rate remains fast.

Transmit In Scan Mode:

Several Characteristics in the transmit mode occur if the radio has been placed in the scan mode of operation.

- Radio is in scan mode but there is no carrier activity to stop the scan on any channel. Removing the microphone from its hookswitch will stop the scanning activity and the radio will revert to the pre-scan selected channel. Replacing the microphone will enable the scan mode after a few seconds delay.
- Radio is in scan mode and carrier activity on a channel has caused scan to stop. Removing the microphone from its hookswitch will keep that channel selected. When push-to-talk (PTT) is pressed on the microphone, the transmit channel will be the displayed channel. The channel can be changed during this time as needed but, will be forgotten when scanning resumes. Placing the microphone back on the hookswitch will cause scan to resume, after a few seconds delay.
- The Channel Guard decode is disabled whenever the microphone is removed from its hookswitch.
- During the scan mode the MONITOR and CHANNEL selection functions are disabled if scan is not stopped on a channel.

TO PROGRAM SCAN CHANNELS AND SELECT PRIORITY

The selection of scan channels and priority is front panel programmable using the SCAN switch in conjunction with the ADD and DELETE switch.

Non-Priority:

1. Confirm that radio is turned on (Channel number is lit). If not, press the POWER switch.
2. If SCAN indicator is lit, press and release the SCAN switch to disable scan function.
3. Select desired channel using the ADD or DELETE switch.
4. Press and hold SCAN switch, then press the ADD switch once to add the channel to the scan list. The "S" indicator will light to indicate that the channel is now in the scan program.
5. Release SCAN switch.
6. Repeat steps 2 thru 5 for each channel (up to 8/16) to be added to the scan list.

Priority 2 (P2)**:

1. Perform steps 1 thru 3 of the Non-Priority procedure.
2. Press and hold SCAN switch; then press the ADD switch twice. The selected channel will now become the Priority 2 channel and the "P2" indicator will light to indicate that the channel is now in the scan program as Priority 2.
3. Release SCAN switch.

Priority 1 (P1)**:

1. Perform steps 1 thru 3 of the Non-Priority procedure.
2. Press and hold SCAN switch; then press the ADD switch three times. The selected channel will now become the Priority 1 channel and the "P1" indicator lights to indicate that the channel is now in the scan program as Priority 1.
3. Release SCAN switch.

NOTE

** If a Priority 1 or 2 scan channel already exists when programming a new Priority 1 or 2 scan channel, the old Priority 1 or 2 channel becomes a Non-Priority scan channel.

Delete Scan Channels (S, P1, P2)

1. Confirm that radio is turned on (digital display lit). If not, press POWER switch.
2. If SCAN indicator is lit, press and release SCAN switch to disable scan function.
3. Select the desired channel to be removed from the scan list using the ADD or DELETE switch.
4. Press and hold SCAN switch; then press the DELETE switch once. This removes the selected channel from the scan list. All scan indicators (S, P1, P2 and SCAN) will be off.
5. Release SCAN switch.
6. Repeat preceding steps 2 thru 5 for each channel to be removed from the scan list.

Review

1. Confirm that radio is turned on (Channel indicator lit). If not, press POWER switch.
2. If SCAN indicator is lit, press and release SCAN switch to disable scan function.
3. Select each channel (one at a time) using the ADD or DELETE switch and confirm channels included on the scan list. The scan indicator (S, P1, P2) will light for each channel programmed.

USING THE EIGHT (8) OR SIXTEEN (16) CHANNEL RADIO (WITH SCAN)

Perform the procedure listed in the paragraph "Using the Eight (8) or sixteen (16) Channel Radio (Without Scan)."

Scan Mode

Press and release SCAN switch to enable the scan function. The scan indicator should light and the following condition apply:

- Only programmed scan channels will be received.
- As long as no signal is being received, the digital display will indicate the pre-scan selected channel. If S, P1, or P2 indicator is not lit, no signal will be received on this channel, since it has not been programmed for scan.

- When a signal is received the display indicates the channel received and the priority level.
- Removing microphone from hookswitch locks the radio onto the received scan channel. Pressing the PTT switch on the microphone allows transmission on the received scan channel.
- Scan resumes, after a few seconds delay, when the microphone is returned to the hookswitch. Pre-scan channel will again be displayed and will be the transmit channel if user removes microphone from hookswitch before another channel is detected.
- Channel changes and other normal operations are allowed while off-hook, but will be immediately forgotten when the microphone is placed on-hook.

MAINTENANCE

Maintenance Information for the UHF MLS mobile radio is provided in Service Section Manual LBI-38429, listed in the Table of Contents of this publication. The Service Section Manual includes information as follows:

- Disassembly Procedures
- Transmit Alignment Procedures
- Receiver Alignment Procedures
- Receiver Test Procedures
- Troubleshooting Procedures
- Test Point Voltage Readings
- Receiver Voltage Reading
- IC and Chip Component Replacement Procedures

Also, provided in the Maintenance Manuals for each circuit board are IC DATA SHEETS with information about each IC package used on that particular circuit board.

DTMF MICROPHONE MODIFICATION

1. Remove the top radio cover and locate the System Control/Synthesizer board (A801).
2. To isolate J701-1 from the printed board, carefully cut the zigzag run on the component side of the board near capacitors C613 and C615 (see Figure 5).
3. Solder a wire (#24 AWG) to J701-1 on the component side of the board.
4. Solder the other end of this wire to the output of the 9-Volt Regulator IC207, pin 3. Pin 3 of IC207 is the pin nearest the rear wall of the radio.
5. Locate the connector plug on the DTMF microphone and insert the blue wire in P701-1.
6. If an external speaker is desired with the DTMF microphone, perform the following modifications:
 - a. On the Transmitter/Receiver board (802), connect jumper plug P502/551 across pins 1 and 2 of J502/J551 (IN).
 - b. Verify that the internal speaker plug P503/552 is connected to speaker jack J503/552.
 - c. Locate the internal speaker plug in the front cap assembly and cut the two wires from the speaker terminals.
 - d. Solder two extension wires to these cut wires and run the wires along the side wall near the System Control/Synthesizer board (A801) and through the opening around J701 at the rear of the radio.
 - e. Add a connector to these wires and a mating connector to the leads of the external speaker.
 - f. Strain relieve the wires inside the radio with a tie wrap at J701-8.



Ericsson GE Mobile Communications Inc.
Mountain View Road • Lynchburg, Virginia 24502

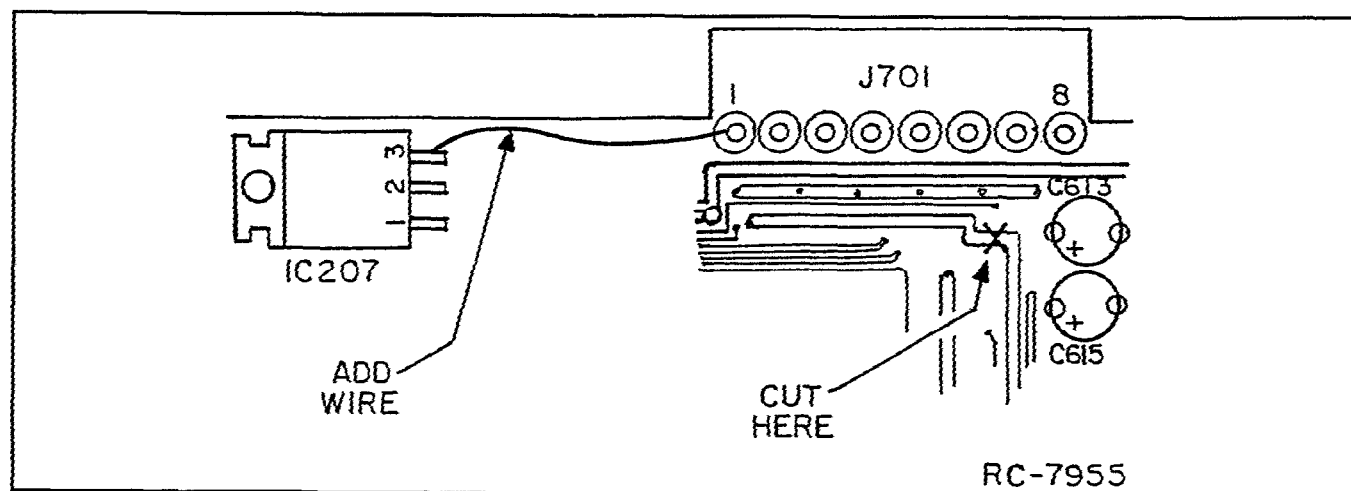
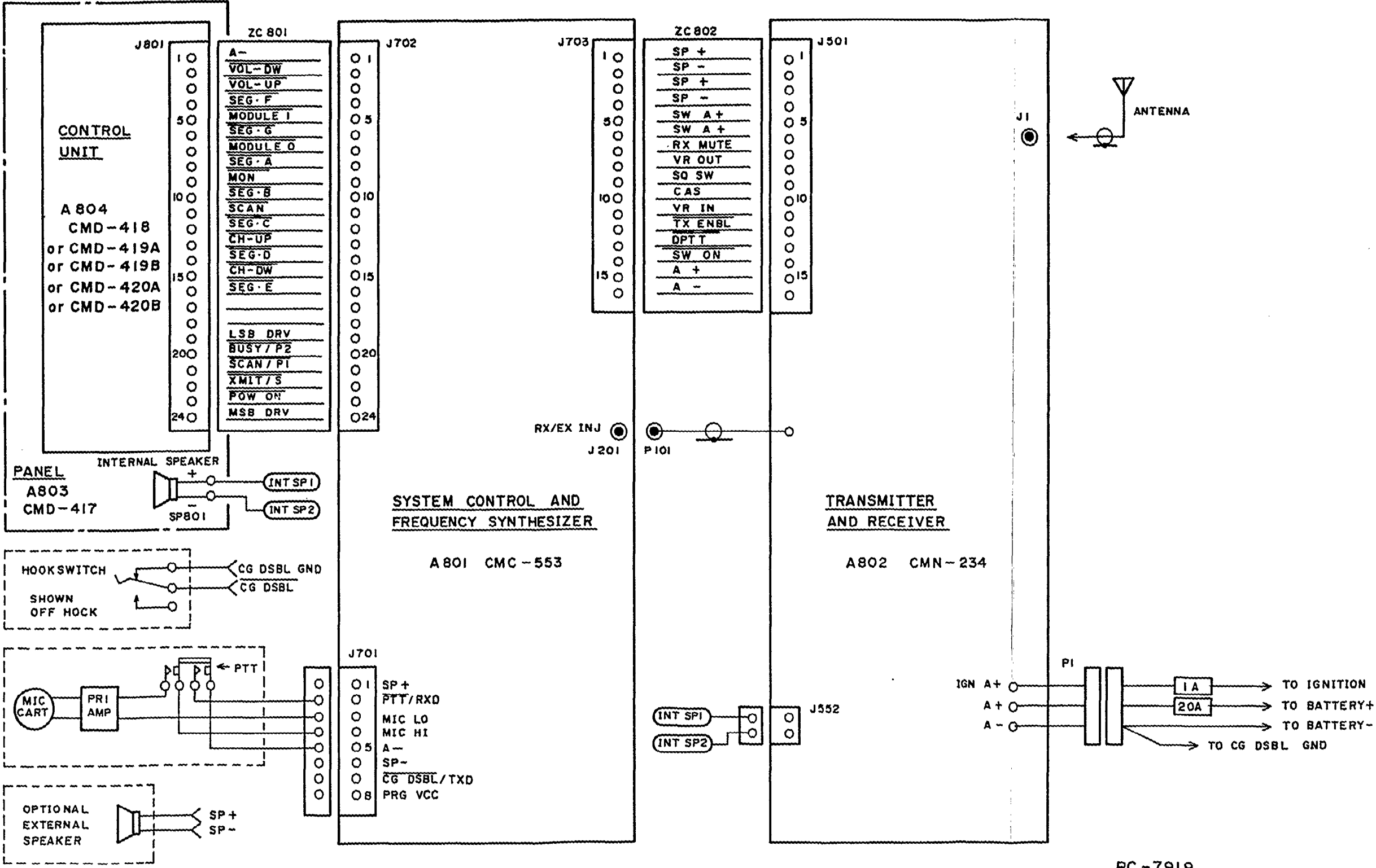
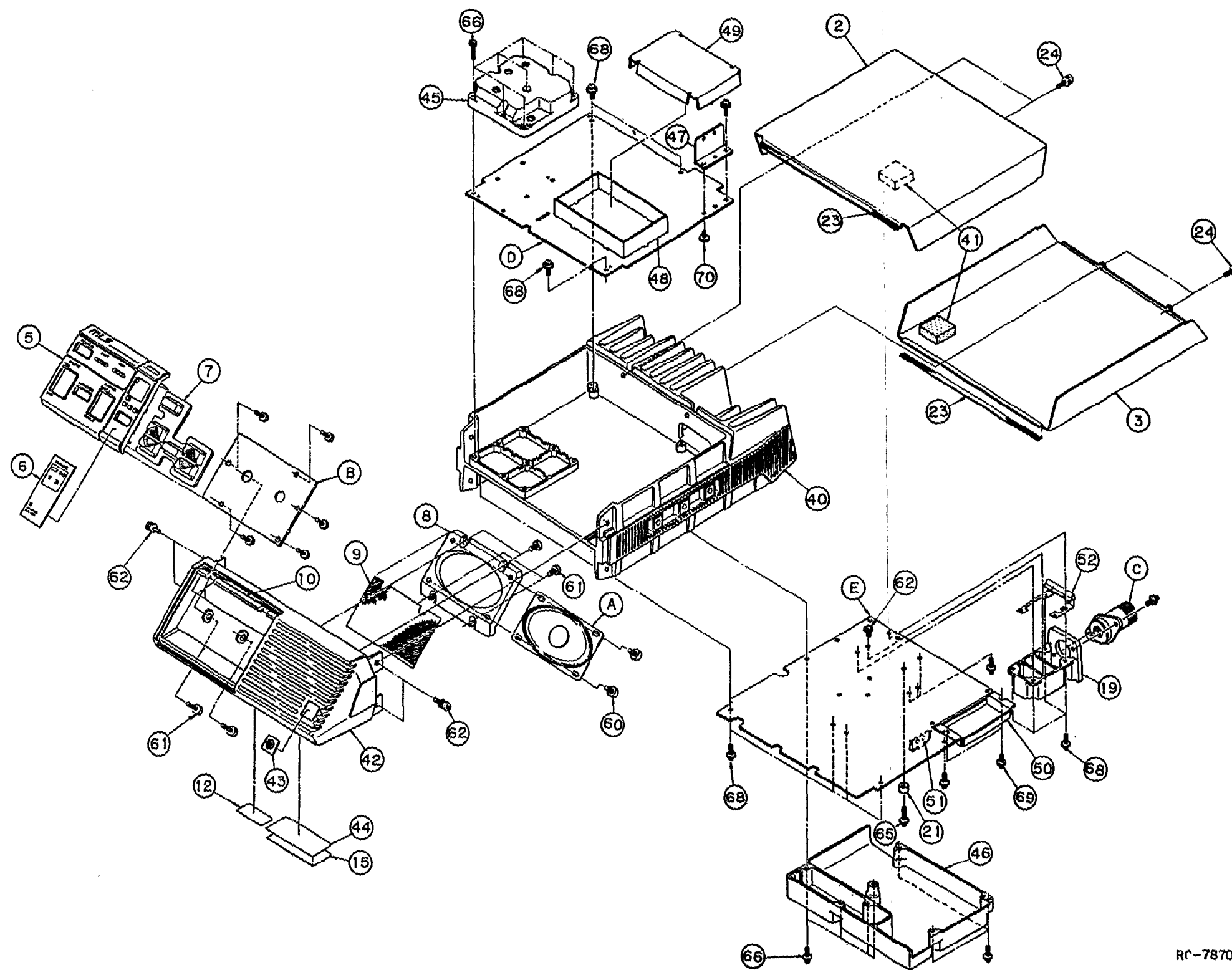


Figure 5



RC-7919



RC-7870

PARTS LIST

LBI-38426

PARTS LIST

MECHANICAL PARTS BREAKDOWN
ML8 (JHF)
ISSUE 1

SYMBOL	GE PART NO.	DESCRIPTION
2	B19/MTB147733	Cabinet, top cover.
3	B19/MTB147734	Cabinet, bottom cover.
5	B19/MTV002878A	Control insert (2 inch type).
6	B19/MTV002880A	Display insert.
7	B19/MTV002876	Control knob I.
8	B19/MTV002875	Mounting base for speaker.
9	B19/MTZ002808	Baffle cloth.
10	B19/MTZ002816	Cloth.
12	B19/MPNN19260A	Shipping label.
15	B19/MPNN19263	Overlay.
19	B19/MTCO02457	Shield case.
21	B19/MTZ035255	Spacer.
23	B19/MTZ002818A	Damper cloth.
24	B19/BRTG03652	Screw.
40	B19/MTCO02966	Cabinet center section.
41	B19/MTG021158	Cushion.
42	B19/MTV003860	Cabinet, front.
43	B19/MPNL19811	Company signature medallion.
44	B19/MPNN22989	Nameplate, (MLSH141).
	B19/MPNN22990	Nameplate, (MLSU241).
	B19/MPNN22992	Nameplate, (MLSU341).
45	B19/MTCO03022	Shield case.
46	B19/MTCO02967	Shield case.
47	B19/MTB182094A	Bracket.
48	B19/MTB182093	Shield case.
49	B19/MTB182092	Shield cover.
50	B19/MTB155695	Shield cover.
51	B19/MTB182107	Install plate.
52	B19/MTB182132	Earth plate.
60	B19/BRTG03429	Screw.
61	B19/BRTG03093	Screw.
62	B19/BRTG01452	Screw.
65	B19/BRTG01620	Screw.
66	B19/BSNA030168	Screw.
68	B19/BRTG03334	Screw.
70	B19/BSSK030058	Screw.
A.		NOTE: REFER TO ELECTRICAL PARTS LIST FOR THE FOLLOWING PARTS NUMBERS.
B.		SPEAKER.
C.		PWB.
D.		CONNECTOR.
E.		SYSTEM CONTROL/SYNTHESIZER BOARD
		TRANSMITTER/RECEIVER BOARD

*COMPONENTS ADDED, DELETED OR CHANGED BY PRODUCTION CHANGES

PARTS LIST

INTERCONNECTION KIT
 MLS (UHF)
 JHM-456840A (403-420 MHz/ 5 PPM)
 JHM-456840B5 (450-470 MHz/ 5 PPM)
 JHM-456840B2 (450-470 MHz/ 2.5 PPM)
 ISSUE 1

SYMBOL	GE PART NO.	DESCRIPTION
A801	B19/CMC-553A	SYSTEM CONTROL/SYNTHESIZER BOARD(403-420 MHz/ 5 PPM).
	B19/CMC-553B5	SYSTEM CONTROL/SYNTHESIZER BOARD(450-470 MHz/ 5 PPM).
	B19/CMC-553B2	SYSTEM CONTROL/SYNTHESIZER BOARD(450-470 MHz/2.5 PPM).
A802	B19/CMN-234A	TRANSMITTER/RECEIVER BOARD (403-420 MHz).
	B19/CMN-234B	TRANSMITTER/RECEIVER BOARD (450-470 MHz).
A803	B19/CND-417	FRONT PANEL.
EC801	B19/5E2NF00009	FLEXIBLE RIBBON CABLE.
EC802	B19/5E2NF00010	FLEXIBLE RIBBON CABLE.
EC805	B19/6ZCFD00166A	POWER CABLE.
		----- ASSOCIATED PARTS -----
	19B801398P1	MICROPHONE.
	19B801398P2	MICROPHONE.

*COMPONENTS ADDED, DELETED OR CHANGED BY PRODUCTION CHANGES

This addendum covers connection changes when using External Speaker Option LS1D with MLS Mobile Radios. It also covers a part number change for the radio Front Cabinet.

EXTERNAL SPEAKER OPTION LS1D

The MLS radio is normally configured for internal speaker operation. When an external speaker is used, J551 jumper connections on the Transmitter/Receiver Board must be changed.

SPEAKER J551 CONNECTION

Internal J551-1 to J551-2

External J551-2 to J551-3

MECHANICAL PARTS LIST

Change from:

42 B19/MTV003860 Cabinet, front.

Change to:

42 B19/MPBC09868 Cabinet, front.