



MAINTENANCE MANUAL
FOR
INTERCONNECT BOARD
19C851617G4

TABLE OF CONTENTS

	<u>Page</u>
DESCRIPTION.....	1
OUTLINE AND SCHEMATIC DIAGRAM	2
PARTS LIST.....	2

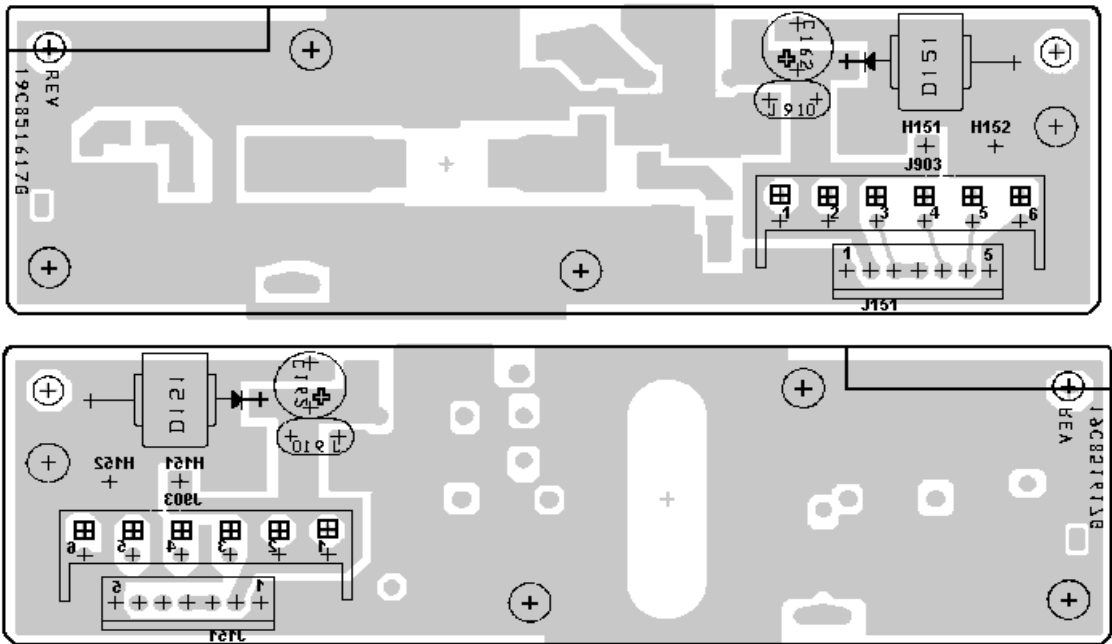
DESCRIPTION

The Interconnect Board (A4) used in the MTD 900 MHz, 15 watt and TMX-8810 mobile radio is located under the top cover of the radio. The MTD, not requiring additional power output gain from the RF Board, uses the Interconnect Board in place of a PA Board.

The Interconnect Board routes radio system power from the System Board to the RF Board. Both switched A + and unswitched A + power are routed from the System Board to the RF Board through connectors J151

and J903. VOL-SQ HI and RELAY are also routed to the System Board for external options. A + power is supplied to the six pin connector J903 through feedthrough capacitor assembly Z903. Diode D151 provides reverse polarity protection. If A + is accidentally reversed, D151 conducts, causing the A + fuse in the power cable to blow. This removes power from the radio, preventing serious damage.

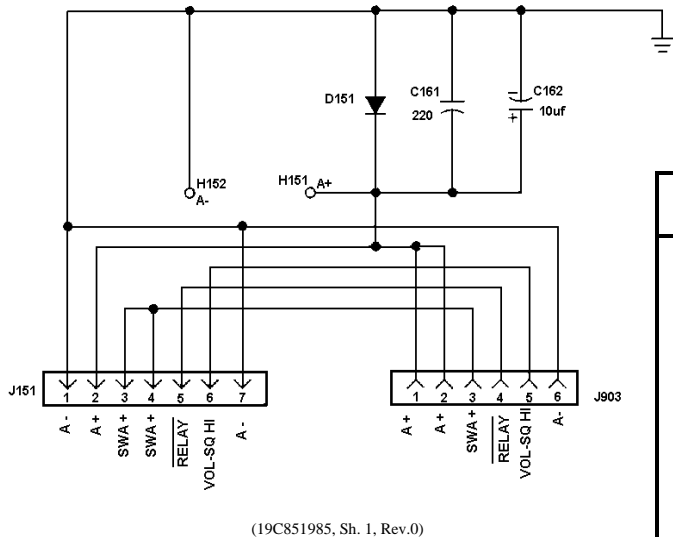
Capacitors C159 and C160 provide power supply filtering on the A + line.



(19C851617, Sh. 1, Rev. 1)
(19A705304, Component Side, Rev. 1)
(19A705304, Solder Side, Rev. 1)

PARTS LIST

INTERCONNECT BOARD
19C851617G4
ISSUE 1



(19C851985, Sh. 1, Rev.0)

SYMBOL	PART NO.	DESCRIPTION
-----CAPACITORS-----		
C161	19A701602P10	Ceramic: 220 pF ±10%, 1000 VDCW
C162	19A703314P10	Electrolytic: 10uF -10+50%, 50 VDCW; sim to Panasonic LS Series.
-----DIODES-----		
D151	19A700082P1	Rectifier, silicon; sim to MR751.
-----JACKS-----		
J151	19A700072P33	Printed wire: 7 contacts rated @ 2.5 amps; sim to Molex 22-27-2071.
J903	19A705245P1	Printed wire: 6 contacts, sim to Molex 10-02-1062.

*COMPONENTS ADDED, DELETED OR CHANGED BY PRODUCTION CHANGES

INTERCONNECT BOARD
19C851617G4