

MAINTENANCE MANUAL

EDACS®

CABLE DUCT SYSTEM

PSMN5A THROUGH PSMN5J

TABLE OF CONTENTS

	<u>Page</u>
SINGLE CABINET (69/83") BASIC UNIT	1
END CAPS	2
69" CABINET BRIDGE (First cabinet in a row)	2
69" CABINET BRIDGE (Last row)	2
69" CABINET BRIDGE (Center rows)	2
83" CABINET BRIDGE (First cabinet in a row)	2
83" CABINET BRIDGE (Last cabinet in a row)	2
83" CABINET BRIDGE - CENTER CABINET (Center Rows)	3
69" TO 83" CABINET	3
MECHANICAL BREAKDOWNS:	
Base Cover	4
Base Cover With Tower	5
APPLICATION DIAGRAM (83" Cabinet To A 69" Cabinet)	6

INTRODUCTION

The information conveyed in this publication will assist when constructing a cable duct system for an Enhanced Digital Access Communication System (**EDACS**). Provided is information concerning the application, the package number for material required in each application and the materials provided with each package number.

Mechanical breakdowns are provided, one for the Base Cover and one for the Base Cover with a Tower, to show the relation of the various parts to each other when assembled.

An Application Diagram is provided to show what is required to go from an 83" cabinet to a 69" cabinet.

The material required to build a complete cable duct system can easily be determined by using the electronic catalog "**CAT**". This program will build any configuration in a 10 X 10 matrix.

SINGLE CABINET (69/83") BASIC UNIT (One set required for each cabinet except for the first cabinet in row)

PACKAGE NUMBER PSMN5A

			<u>Qty</u>
Item 1	Base Part	19B802404P1	1
Item 2	Cover	19D903920P21	1
Item 3	Coupler	19D903920P10	1

(The following parts are part of Hardware Kit 344A4281G1)

Item 25	Screws	N80P1600B6	24
Item 26	Spacers	7142162P142	1
Item 27	Washers	N402P9B6	2

END CAPS (One set required per row)**PACKAGE NUMBER PSMN5B**

			<u>Qty.</u>
Item 4	End Caps	19D903920P12	2
(The following part is part of Hardware Kit 344A4281G1)			
Item 25	Screws	N80P1600B6	2

69" CABINET BRIDGE (First cabinet in a row)**PACKAGE NUMBER PSMN5C**

			<u>Qty.</u>
Item 1	Base Part	19B802404P1	1
Item 3	Coupler	19D903920P10	2
Item 5	Vertical Left	19D903920P37	1
Item 6	Cover Left	19D903920P38	1
Item 7	Bridge (50")	19D903920P51	1
Item 8	Bridge Cover	19D903920P23	1
Item 9	Cabinet Cover	19D903920P22	2

(The following parts are part of Hardware Kit 344A4281G1)

Item 25	Screws	N80P1600B6	24
Item 26	Spacers	7142162P142	1
Item 27	Washers	N402P9B6	2

69" CABINET BRIDGE (Last Row)**PACKAGE NUMBER PSMN5D**

			<u>Qty.</u>
Item 1	Base Part	19B802404P1	1
Item 3	Coupler	19D903920P10	2
Item 9	Cabinet Cover	19D903920P22	2
Item 10	Vertical Right	19D903920P39	1
Item 11	Cover Right	19D903920P40	1

(The following parts are part of Hardware Kit 344A4281G1)

Item 25	Screws	N80P1600B6	24
Item 26	Spacers	7142162P142	1
Item 27	Washers	N402P9B6	2

69" CABINET BRIDGE (Center rows - Must also order PSMN5C and PSMN5D for first and last row)**PACKAGE NUMBER PSMN5E**

			<u>Qty.</u>
Item 1	Base Part	19B802404P1	1
Item 3	Coupler	19D903920P10	2
Item 7	Bridge (50")	19D903920P51	1
Item 9	Cabinet Cover	19D903920P22	2
Item 12	Vertical Center	19D903920P41	1
Item 13	Vertical Cover Center	19D903920P42	2
Item 14	Bridge Cover	19D903920P26	1

(The following parts are part of Hardware Kit 344A4281G1)

Item 25	Screws	N80P1600B6	24
Item 26	Spacers	7142162P142	1
Item 27	Washers	N402P9B6	2

83" CABINET BRIDGE (First cabinet in a row)**PACKAGE NUMBER PSMN5F**

			<u>Qty.</u>
Item 1	Base Part	19B802404P1	1
Item 3	Coupler	19D903920P10	2
Item 15	Vertical Left	19D903920P31	1
Item 16	Cover Left	19D903920P32	1
Item 17	Bridge	19D903920P71	1

Item 18 Bridge Cover 19D903290P241

(The following parts are part of Hardware Kit 344A4281G1)

Item 25	Screws	N80P1600B62	4
Item 26	Spacers	7142162P142	1
Item 27	Washers	N402P9B6	2

83" CABINET BRIDGE (Last cabinet in a row)**PACKAGE NUMBER PSMN5G**

			<u>Qty.</u>
Item 1	Base Part	19B802404P1	1
Item 3	Coupler	19D903920P10	2
Item 19	Vertical Right	19D903920P33	1
Item 20	Cover Right	19D903920P34	1

(The following parts are part of Hardware Kit 344A4281G1)

Item 25	Screws	N80P1600B6	24
Item 26	Spacers	7142162P142	1
Item 27	Washers	N402P9B6	2

83" CABINET BRIDGE - CENTER CABINET (Center Rows - Must also order PSMN5F and PSMN5G for first and last row)

PACKAGE NUMBER PSMN5H

			<u>Qty.</u>
Item 1	Base Part	19B802404P1	1
Item 3	Coupler	19D903920P10	2
Item 14	Bridge Cover	19D903920P26	1
Item 17	Bridge	19D903920P71	1
Item 21	Vertical Center	19D903920P35	1
Item 22	Cover Center	19D903920P36	1

(The following parts are part of Hardware Kit 344A4281G1)

Item 25	Screws	N80P1600B6	24
Item 26	Spacers	7142162P142	1
Item 27	Washers	N402P9B6	2

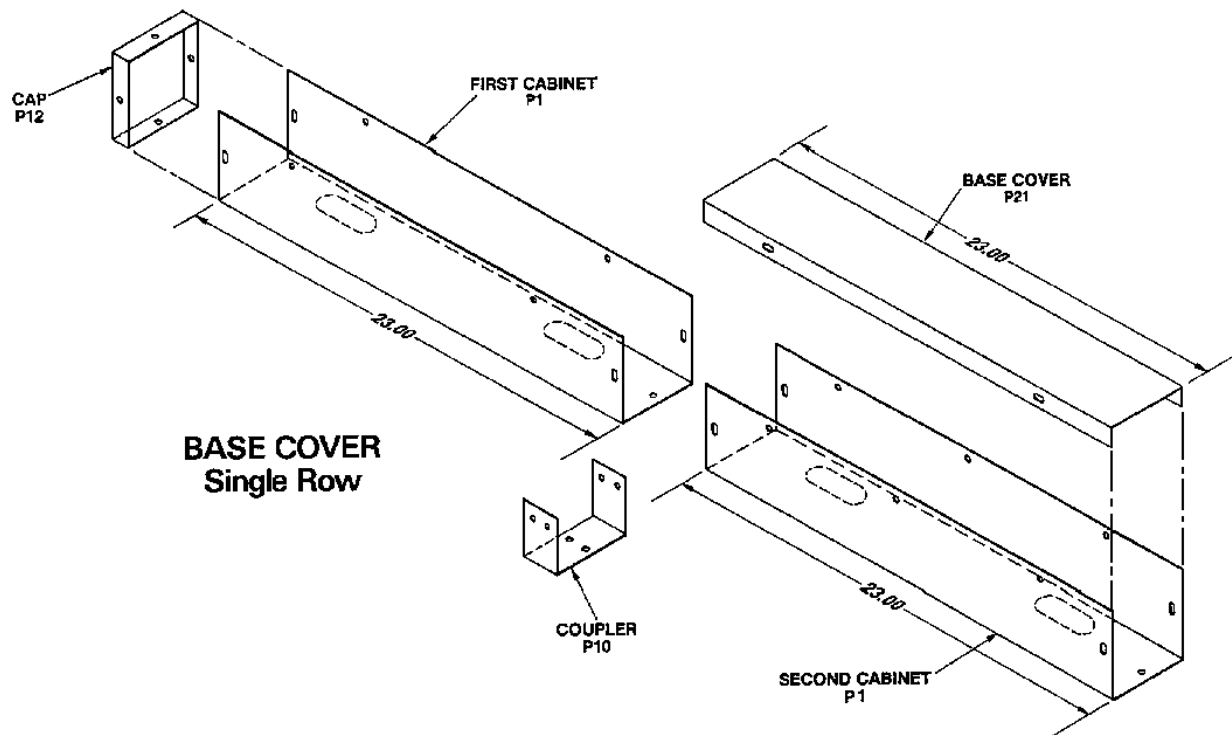
69" TO 83" CABINET

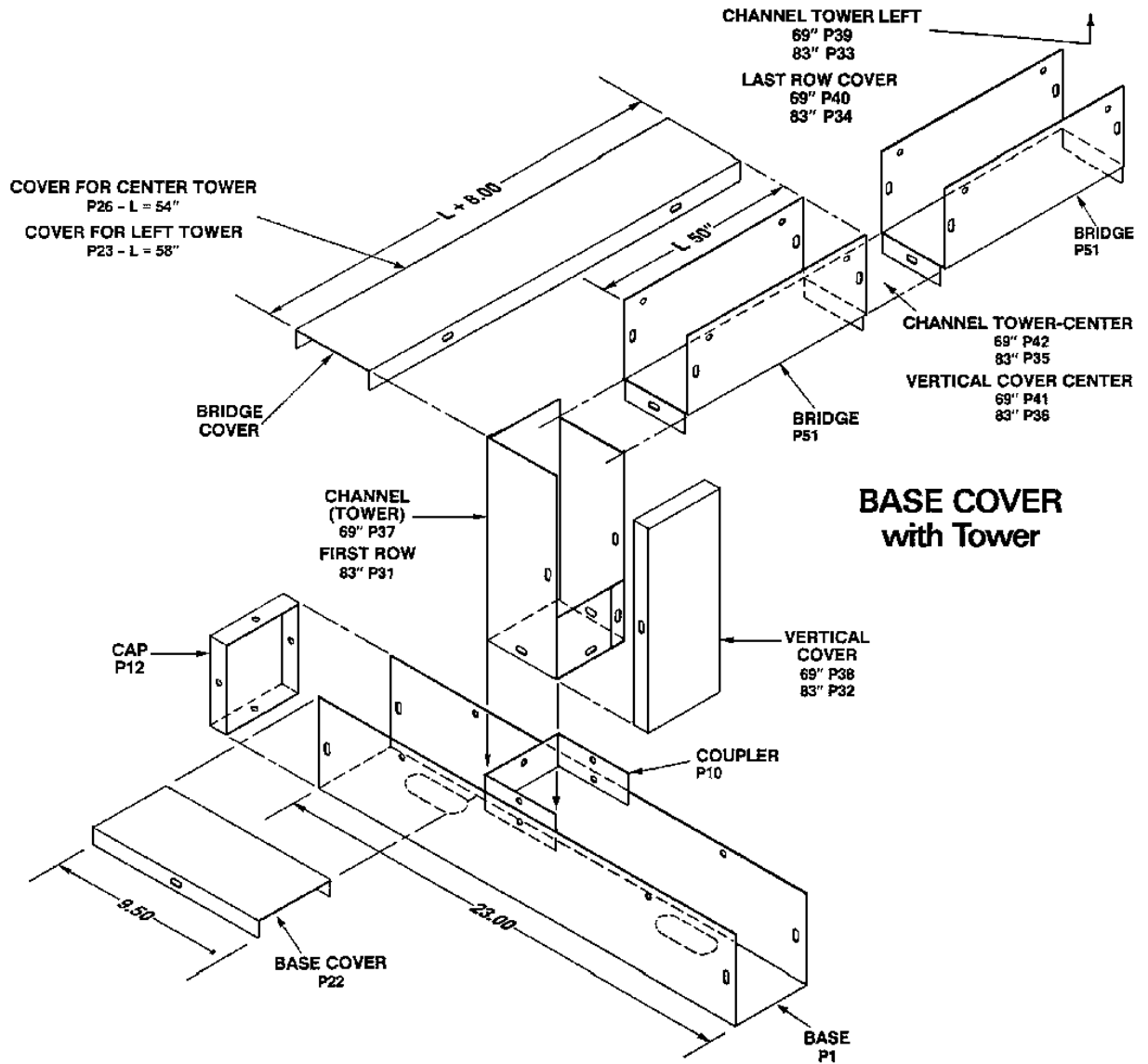
PACKAGE NUMBER PSMN5J

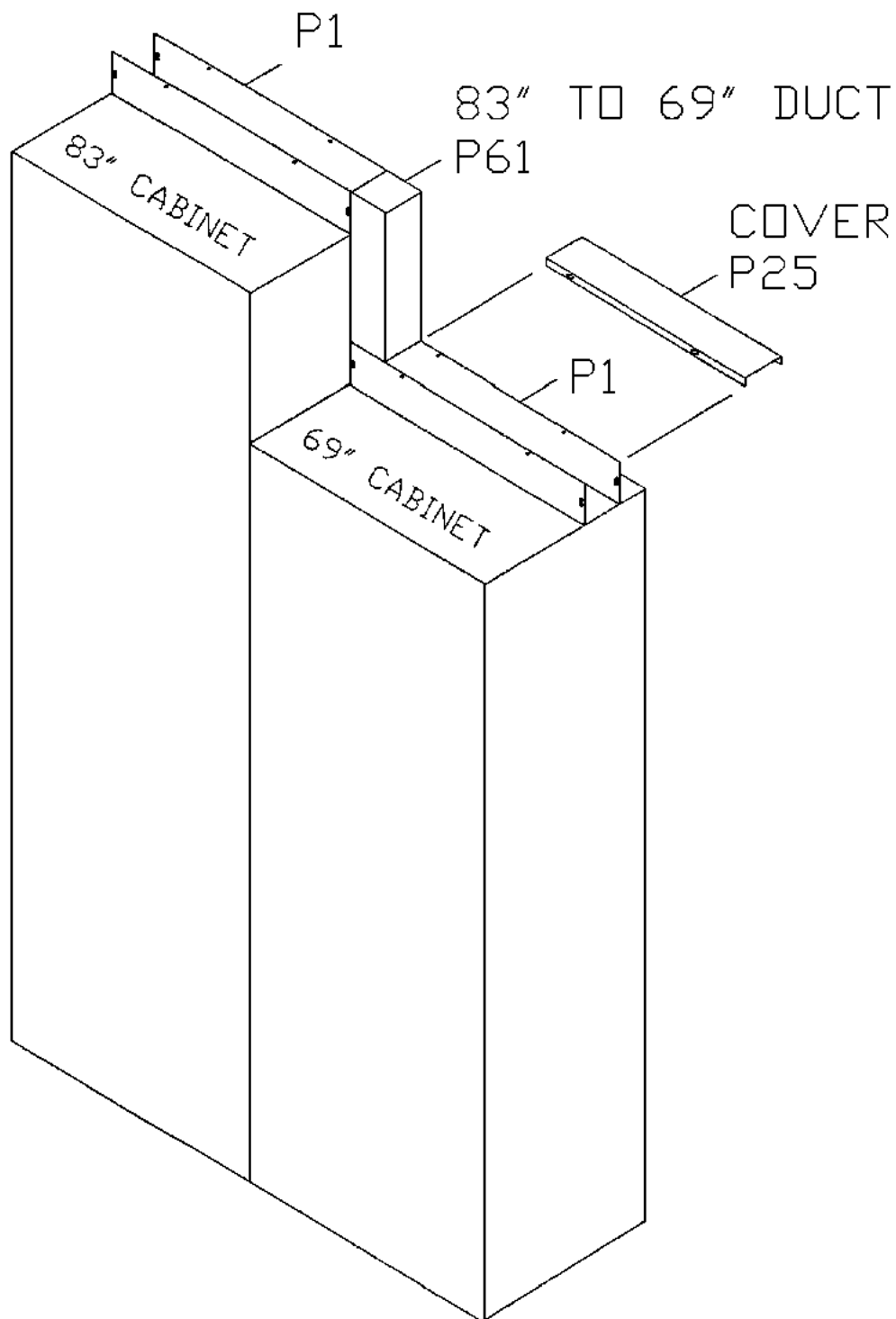
			<u>Qty.</u>
Item 23	Adapter/Cover	19D903920P61	1
Item 24	Base Cover For Adapter	19D903920P2	5

(The following part is part of Hardware Kit 344A4281G1)

Item 25	Screws	N80P1600B6	24
---------	--------	------------	----







GOING FROM AN 83" CABINET TO A 69" CABINET