

Installation Manual

MDX/ORION
Desk Top Station



TABLE OF CONTENTS

	Page
INTRODUCTION	1
UNPACKING AND CHECKING EQUIPMENT	1
INSTALLATION	1
PREPARATION OF DESK TOP STATION	1
PREPARATION OF MOBILE RADIO	1
INSTALLING THE MOBILE RADIO	2
INSTALLING THE DESK TOP STATION	2
INSTALLING THE STANDBY POWER TRANSFER OPTION	2
INSTALLING THE REMOTE OPTION	2
ADJUSTING THE REMOTE OPTION	2
INSTALLING THE KEYPAD BOARD OPTION	3
INSTALLING THE CLOCK/VU MODULE OPTION	3
PROGRAMMING NOTES	3

DIAGRAMS

INSTALLATION INSTRUCTIONS (MDX RADIO APPLICATION)	4
INSTALLATION INSTRUCTIONS (ORION RADIO APPLICATION)	16
INTERCONNECTION DIAGRAM (MDX RADIO APPLICATION)	17
INTERCONNECTION DIAGRAM (ORION RADIO APPLICATION)	20

NOTICE!

This manual covers Ericsson and General Electric products manufactured and sold by Ericsson Inc.

NOTICE!

Repairs to this equipment should be made only by an authorized service technician or facility designated by the supplier. Any repairs, alterations or substitution of recommended parts made by the user to this equipment not approved by the manufacturer could void the user’s authority to operate the equipment in addition to the manufacturer’s warranty.

NOTICE!

The software contained in this device is copyrighted by the Ericsson Inc. Unpublished rights are reserved under the copyright laws of the United States.

This manual is published by **Ericsson Inc.**, without any warranty. Improvements and changes to this manual necessitated by typographical errors, inaccuracies of current information, or improvements to programs and/or equipment, may be made by **Ericsson Inc.**, at any time and without notice. Such changes will be incorporated into new editions of this manual. No part of this manual may be reproduced or transmitted in any form or by any means, electronic or mechanical, including photocopying and recording, for any purpose, without the express written permission of **Ericsson Inc.**

INTRODUCTION

This manual contains instructions for the assembly of a Desk Top Station. This is done by installing an MDX mobile or ORION mobile radio into the Desk Top Station Assembly, using the hardware kit supplied.

Mobile radios which can be accommodated by the Desk Top Station are all MDX radios and ORION up to the mid transmitter power levels. Only the local control version station is available for the ORION mobile.

Included are mounting instructions for the radio, as well as instructions for making the few required cable connections. Installation is made easy with the help of an Installation Diagram and an Interconnection Diagram, included as part of this manual.

UNPACKING AND CHECKING EQUIPMENT

Hardware Kit 349A9561 was used to assemble your station. The unused material was shipped with the station. Remove the kit and store for possible use.

Installation of the Desk Top Station includes three parts:

1. Installation of the Mobile Radio in the Desk Top Station Assembly using Hardware Kit 349A9561 (supplied).
2. Installation of Option Boards in the Desk Top Station Assembly, in accordance with options selected. Remote Interface Board Option, with one of the following remote boards:
 - a. DC Remote Board
 - b. 4-Channel Tone Remote Board
 - c. 5-Channel EDACS Tone Remote Board
 - d. Standby Power Transfer Option
 - e. Clock/VU Meter Option
3. Installation of the Desk Top Station in the place of operation with the necessary power, antenna, microphone, and line connections.

INSTALLATION

PREPARATION OF DESK TOP STATION

1. Loosen the two (2) captive screws which hold the top cover on the Desk Top Assembly. Remove the cover.
2. Disconnect cable W2 from J202 on the Interconnect board and also from J215 (ORION Application).
3. Loosen, **Do Not Remove**, the two (2) M3.5 screws that hold the radio mounting bracket on the Desk Top Station Assembly.
4. When external wires for options are to be connected, remove and discard the round knockout button in the rear of the station housing. Insert the rubber grommet 5490407P10 in the hole. Place the cable clamp (344A3480P1) around the wires. Snap the cable clamp retainer into the hole adjacent to the grommet.

PREPARATION OF MOBILE RADIO

MDX Radio

1. Remove the bottom cover of the radio by removing the four (4) retaining TORX® screws.
2. Unplug the radio internal speaker cable from J904 on the radio and let it hang.
3. Discard the rubber plug and in its place slip the rubber sleeve on cable W2. P905 of W2 plugs into J905.
4. Replace the bottom cover of the radio with the four (4) retaining TORX® screws removed in Step 1.
5. Using a permanent marker, copy the FCC identification number of the radio onto the Desk Top Station FCC label.
6. Attach the side mounting brackets with four (4) hex mounting screws and four (4) washers (2 per side) in the sides of the radio.

ORION Radio

- 1) No special modifications required.
- 2) Attach the side mounting brackets with four (4) hex mounting screws (2 per side) in the sides of the radio.

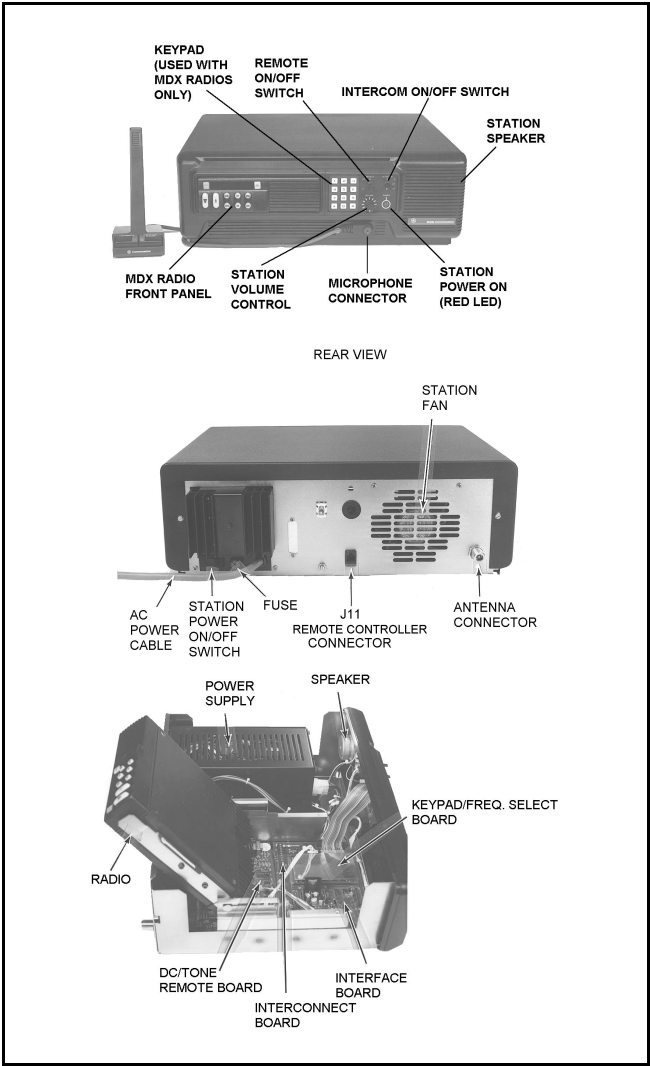


Figure 1 - Desk Top Station Assembly (MDX Radio Shown)

INSTALLING THE MOBILE RADIO

1. Connect P202 of cable W2 from the radio to J202 on the Interconnect Board. Also connect P215 to J215 when ORION radio is used.
2. Connect P101 of the Desk Top Station antenna cable W1 into the RF TNC connector on the radio.
3. Power Cable Connections:
 - a. MDX - Connect P1 of the Desk Top Assembly power cable W3 to J1 of the radio power cable W901.
 - b. ORION USA Version - Connect P1 of Desk Top Assembly power cable W3 to J1002 on the rear of the radio unit.

- c. ORION European Version - There is no cable W3. The power connections are included in cable W2 which connects to the DB37 connector on the radio unit.
4. Place the radio in the mounting bracket and position it for the proper Desk Top Station front appearance and tighten the two (2) M3.5 screws that hold the radio mounting bracket in place.
 5. Replace the Desk Top Assembly cover using the two (2) screws loosened in Step 1 of "**PREPARATION OF DESK TOP STATION.**"

This completes the installation of the mobile radio in the Desk Top Station Assembly.

INSTALLING THE DESK TOP STATION

AC Power

The Desk Top Station power supply must be connected to AC power with the fused and ON/OFF-switched AC power cable found at the back of the Desk Top Assembly. The transformer straps are shipped set for a 120 volt power source:

120 volts $\pm 10\%$, Single-Phase, 50/60 Hz, 4 amps, 500 watts

Refer to Power Supply Maintenance Manual LBI-38751 for procedures to change the transformer straps to accommodate a 240 volt power source:

240 volts $\pm 10\%$, Single-Phase, 50/60 Hz, 2 amps, 500 watts

Different Desk Top Station power supplies may have different current capabilities. Refer to the applicable power supply maintenance manual for current usage.

Microphone

A desk microphone, a DTMF microphone, or a standard mobile microphone can be used. The microphone connects to the Desk Top Station at J101 on the Front Cap under the Control Panel.

Antenna

A 50-ohm antenna is required. It should be connected through coax cable to the Type N connector mounted in the rear wall of the Desk Top Assembly.

CAUTION

The Desk Top Station may not operate properly with the antenna mounted near the radio. Always mount the antenna at least five (5) feet from the station.

INSTALLING THE STANDBY POWER TRANSFER OPTION

1. Loosen the two (2) captive screws holding the top cover on the Desk Top Station Assembly. Remove the cover.
2. Disconnect cable W3 from the station power supply at J1/P101.
3. Mount Power Transfer Relay K1 inside to the side wall between the power supply and speaker using the single mounting screw supplied.
4. Remove and discard the rectangular knockout button in the rear wall of the Desk Top Assembly. Snap P2 of BATT STBY/PWR cable into the hole.
5. Connect the relay harness as follows:
 - a. Connect P1 to J1 of the station power supply.
 - b. Connect J1 to P1 of W3.
6. Replace the Desk Top Assembly cover using the two screws loosened in Step 1 of these instructions.

INSTALLING THE REMOTE OPTION (MDX ONLY)

1. Remove the two (2) captive screws holding the top cover on the Desk Top Station Assembly. Remove the cover.
2. If the Desk Top Assembly already includes the factory installed "Intercom Remote" Control Panel and the Remote Interface Board, proceed to Step 6 below. Otherwise, replace the standard Control Panel with the "Intercom Remote" control panel.
3. Remove jumper P104 from J204 on the Interconnect Board. Install the Remote Interface Board.
4. Mount the Remote Interface Board onto the Interconnect Board, plugging it in so P204 and P205 seat directly on the horizontally oriented pins of J204 and J205 on the Remote Interface Board.
5. Remove and discard cables included with the Remote Board. Install the Remote Board on the base of the station behind the Interconnect board on standoffs with M3.5 screws. Connect the Remote Board J2 to the Remote Interface Board J302 using cable W7.
6. Connect the Remote Interface Board J301 to the Control Panel J1 using cable W6.

7. Remove the knockout on the rear of the station for J11. Insert J11 of cable W10. Connect the other end of W10 to J1 or TB1 of the Remote Board per the Interconnect Diagram 19D904375 sheet 2.
8. Adjust operating audio levels on the Remote Board

DC Remote Board	19A704686P3 LBI-31594
Tone Remote Board	19A704686P6 LBI-31552
EDACS Remote Board	19A704686P8 LBI-38119

The Remote Control Board should be checked and adjusted when the system is installed. The tonedecoder and filter adjustments are set at the factory and should not require adjustment unless the tone filters, decoders, generators or associated circuitry are replaced.

Make sure all connections to the base station and Remote Controller are complete, and that the tone panel and base station have been properly aligned before adjusting the Tone Remote Control Board.

ADJUSTING THE REMOTE OPTION

Equipment Required

1. Ac voltmeter with dBm scale
2. Audio Generator
3. Deviation Monitor

Receive Audio (R2) (R35) (R66)

1. Apply a 1000 Hz tone with a ± 3 kHz deviation to the station receiver that is strong enough to fully quiet the receiver.
2.
 - A. On the DC Remote Board 686P3 set R2 for 0dBm at J1-1 & J1-4.
 - B. On the Tone Remote Board 686P6 set R35 for 0dBm at J1-3 & J1-4.
 - C. On the EDACS Remote Board 686P8 set R66 for 0dBm at TB1-2 & TB1-5.

Intercom Audio

1. Apply 1000hz at 30mvRMS to Mic Jack J101.
2. Turn Intercom Sw on.
3. On (931) Interface Bd Set R323 for 0dBm at:
 - a. J1-1 & J1-4 on the 686P3 DC Remote Bd.
 - b. J1-3 & J1-4 on the 686P6 Tone Remote Bd.
 - c. TB1-2 & TB1-5 on the 686P8 EDACS Remote Bd.

Tx Mic Audio (R1) (R60) (R82)

1.

Apply a 1000 Hz tone at 120mV into the microphone jack of the Remote Controller with the largest line loss (usually farthest from the station).
2.

If the mobile will not key from the remote and/or the Remote SF functions do not work.

a.

On the Tone Remote 686P6 Bd. adjust R59 until it does.

b.

On the EDACS Remote 686P8 Bd. adjust R17 until it does. (R16 may also require adjustment. Use R16 only if needed.)
3.

A.

On the 686P3 DC Remote Board set R1 for the proper deviation.

B.

On the 686P6 Tone Remote Board set R60 for the proper deviation.

C.

On the 686P8 EDACS Remote Board set R82 for the proper deviation.

For detailed instructions, refer to the applicable maintenance manual for the board being adjusted. The audio levels on the Remote Board must be adjusted first, before the two intercom level adjustments can be made on the Remote Interface Board.

Speaker Level

1.

After the Remote Board is set up so that the remote consoles are transmitting and receiving properly with the Desk Top Station radio, adjust the intercom levels on the Remote Interface Board:

a.

Adjust R325 for the proper station speaker level from the remote console microphone.
2.

Replace the Desk Top Assembly cover with the two (2) screws loosened previously.

INSTALLING THE KEYPAD BOARD
OPTION (MDX ONLY)

1.

Loosen the two (2) captive screws holding the top cover on the Desk Top Station Assembly. Remove the cover.
2.

Mount the Keypad Board onto the Interconnect Board, plugging it in so that P207 and P208 seat directly on the horizontally oriented pins of J207 and J208 on the Interconnect Board.
3.

Connect the end of W9 marked "keypad" onto the keypad pins. Plug the other end onto J401 of the Keypad Board. Observe keyed pins of W9.

4.

When remote options are used, connect cable W8 to P2 of the Remote Board. Connect the other end to J402 of the Keypad Board. Orient plug at J402 so the pin with no wire is toward J208.
5.

On Remote Interface Board connect jumpers as follows:

P303 on J303 pins 2 and 3

P304 on J304 pins 2 and 3

P305 on J305 pins 2 and 3

P306 on J306 pins 2 and 3

P307 on J307 pins 2 and 3
6.

Replace Desk Top Assembly cover with the two (2) screws loosened in Step 1.

INSTALLING THE CLOCK/VU MODULE
OPTION

1.

Loosen the two (2) captive screws holding the top cover on the DeskTop Station Assembly. Remove the cover.
2.

Remove the four (4) screws securing the Front Cap.
3.

Remove the four (4) screws securing the Control Panel.
4.

Remove P106 from the Power LED, note polarity. On Control Panel remove P1 of W6 from J1.
5.

Install new 904861G5 or G6 by reversing the order of steps 1-4.

CLOCK SETTING INSTRUCTIONS

The following separate items may be set: 12/24 hr display mode, hours, minutes, and display intensity. The time keeping stops when in any of the set modes. The clock seconds (not displayed) are set to zero any time a display is altered. Thus, if setting to the nearest second is desired, the operator must set the time one minute ahead of the presetrn time then wait for the reference clock to advance to the displayed time before exiting the set mode. To set the clock:

NOTE

The VU meter bar graphic display is inactive during the time setting mode.

- Press SW1 approximately 1 sec.
A "12__" or "24__" will display indicating the display mode. Press SW2 to alternate between modes. When the correct mode is displayed.

- Press SW1 approximately 1 sec.
The time will display (no flashing colon) with hours intensified. Press SW2 to advance the hours. Holding SW2 down will auto increment at about 3 counts per second. Note the dot in the upper left indicates PM. When the correct hour is displayed.
- Press SW1 approximately 1 sec.
The time will display with minutes intensified. Press SW2 to advance the minutes. When the correct minutes are displayed.
- Press SW1 approximately 1 sec.
The time will display at the set intensity (no flashing colon). SW2 changes the intensity. Four intensities are available. When the correct intensity is displayed and the reference clock advances to the next minute.
- Press SW1
The colon will now flash and the time keeping continues.

VU METER TEST/CALIBRATION

TEST

Apply a 1 kHz tone at OVRMS to J101-1 DESK MIC HI and J101-2 DESK MIC LO. Ground J101-3 DESK MIC PTT. No LEDs should be lit. Increase 1 kHz tone level. The LEDs should turn on one at a time. All green/yellow LEDs

should be lit at a level of 100 mV. All red LEDs should be lit at a level of 175 Mv.

CALIBRATION

The VU meter should have been calibrated at the factory. If the dot at the lower right hand corner of the display is lit, then calibration must be performed.

If the calibration must be changed, a calibration mode is entered by removing power from the unit, then while holding down SW1, powering the unit. The unit will display a 3 digit number. Supply a 107 mV 1 kHz signwave to the Desk Mic Hi input (J101-1 & 2) and ground the Desk Mic PTT input (J101-3). The bar graph will operate. SW1 will increase the gain (decrease the displayed number) while SW2 will decrease the gain. These switches must be tapped, not held to set the gain. The range of the displayed number is 80 to 205 with 128 being the default (typical calibration value). Increase the gain until one red bar lights, then decrease the gain until this red light goes out. This is the ideal calibration point. To exit the calibrate mode and store this calibration constant and the key, press and hold down SW1 for about 5 seconds. The module will resume normal operation.

PROGRAMMING NOTES

MDX

PC Programming is accomplished through jack J101 on the desktop station. The MDX mobile can only be flashed programmed via the microphone connector on the radio unit.

1.

The volume control must be set to level seven (7) and the enable activated.
2.

When the remote interface board is installed, the volume control must be set for fixed volume.
3.

When the station is local control only, the volume control must **not** be set for fixed volume.

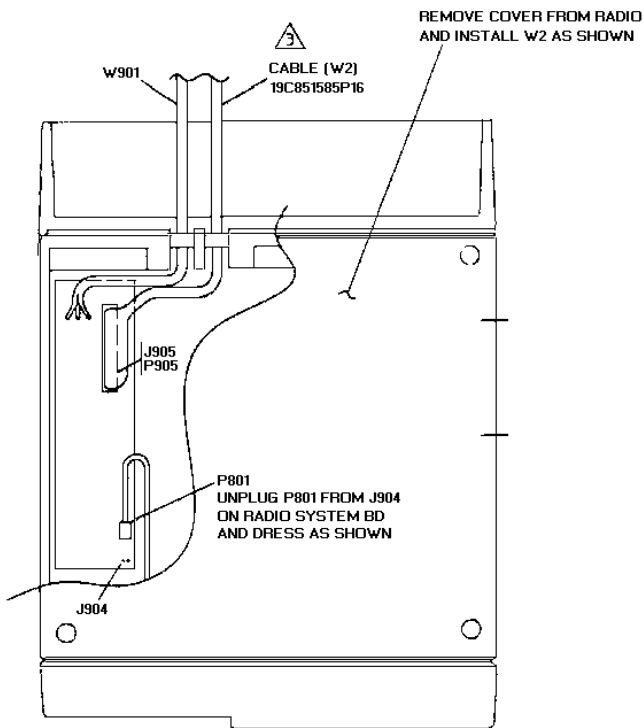
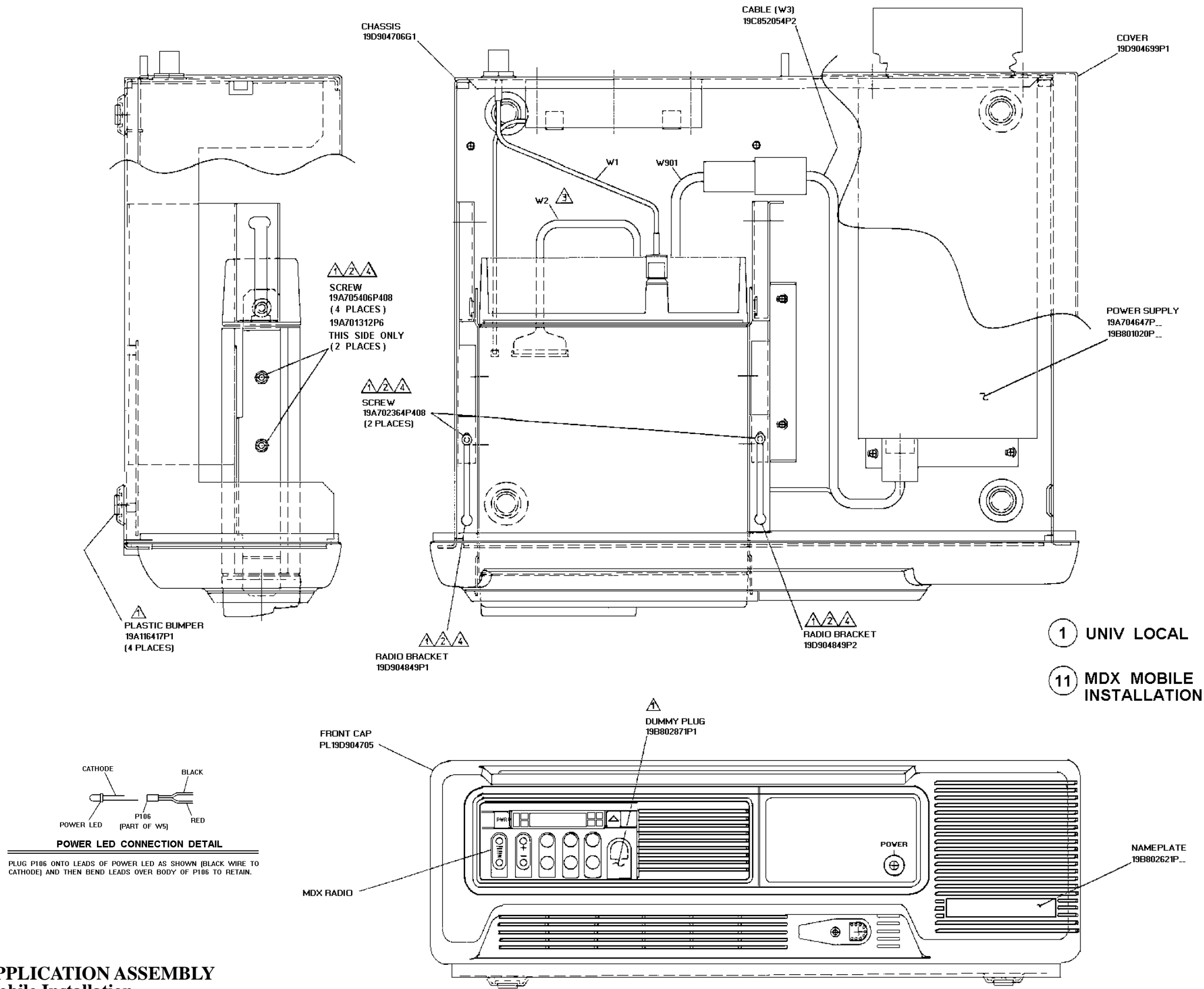
ORION

PC Programming is accomplished through jack J101 on the desktop station.

1.

Auxiliary input #2 must be set to PTT.
2.

The volume control is **not** fixed for the local control station.

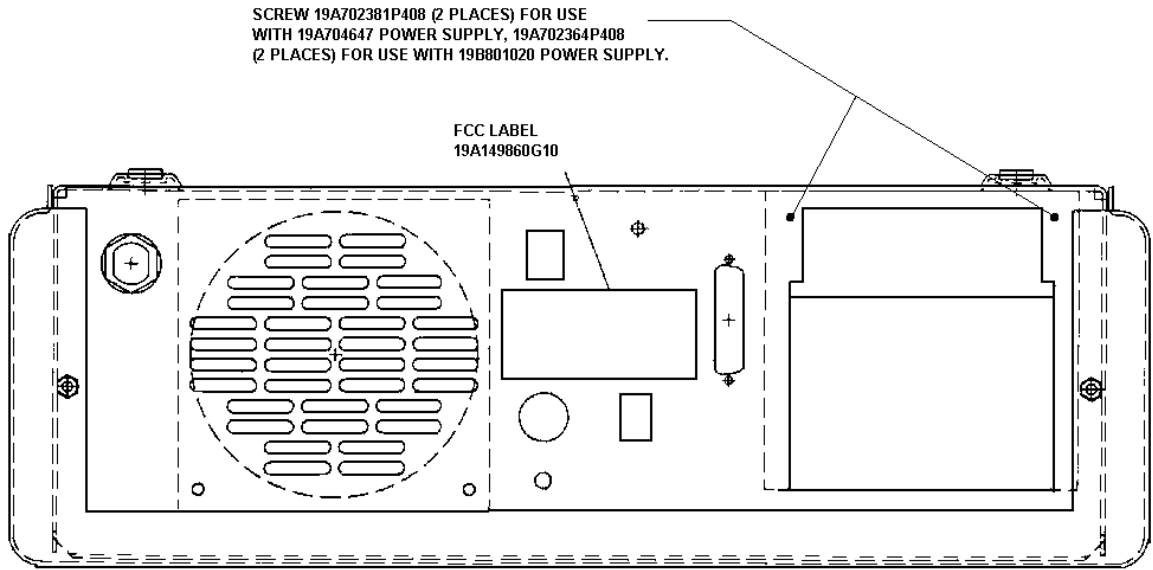
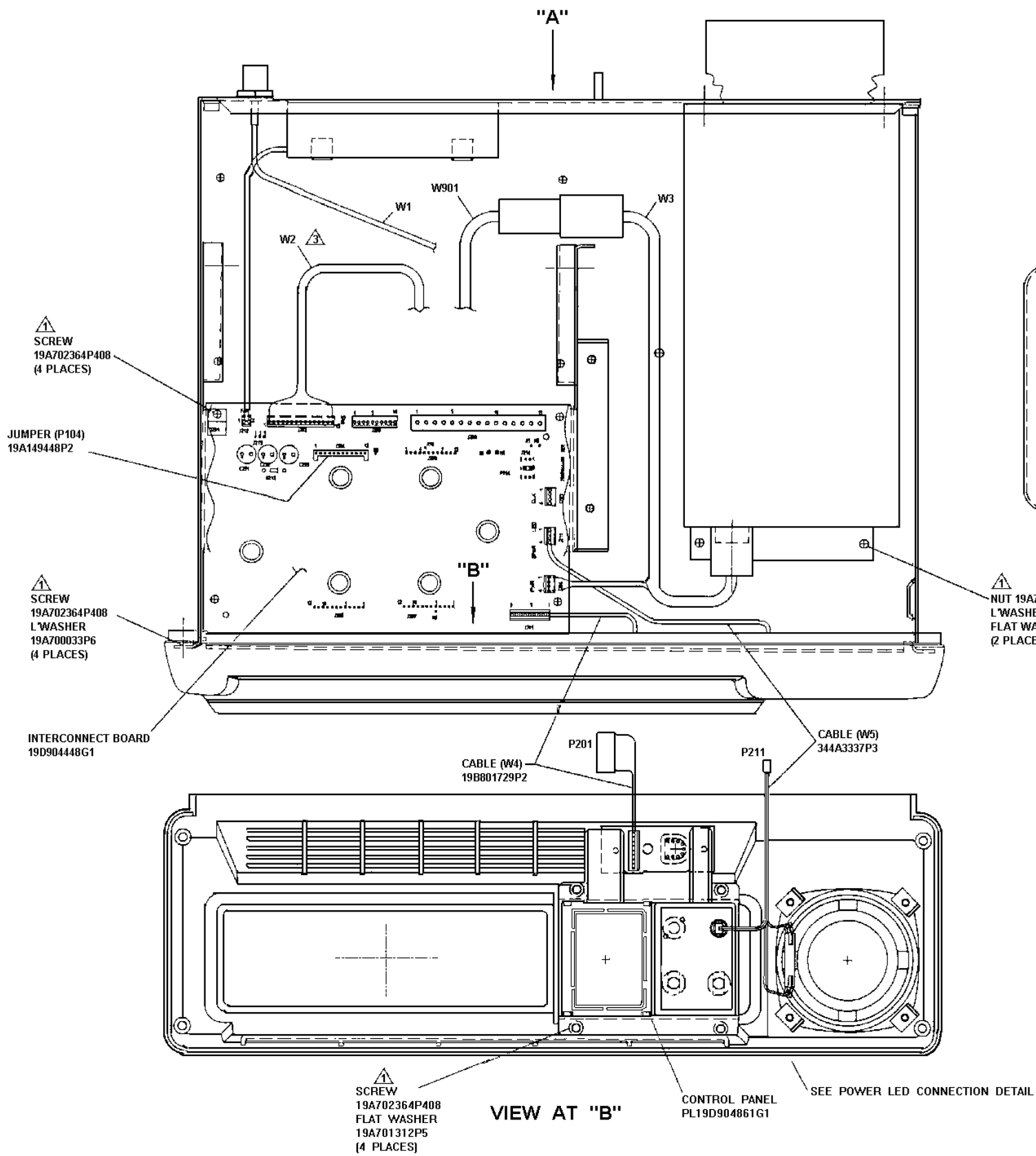


BOTTOM VIEW OF RADIO

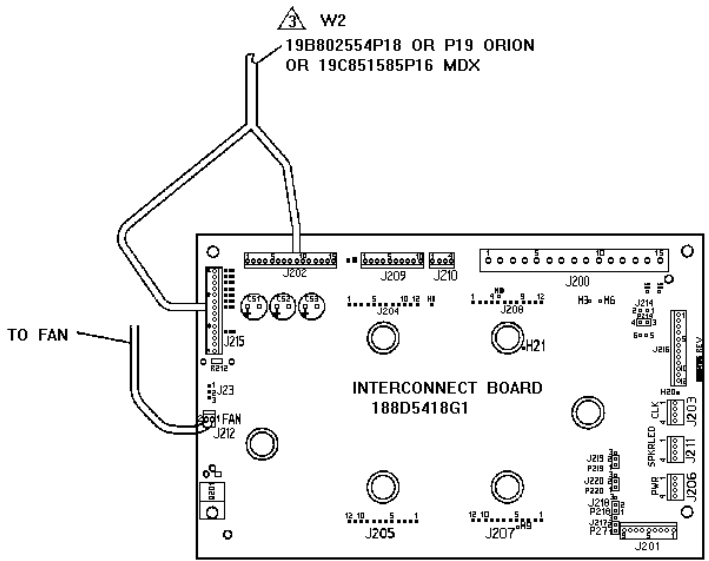
- NOTES:
- 1 PART OF MDX HARDWARE KIT 349A9561G1 OR PART OF ORION HARDWARE KIT 349A9561G2
 - 2 THESE ITEMS ARE USED WHEN MOBILE IS FACTORY INSTALLED. IF MOBILE IS NOT FACTORY INSTALLED THESE ITEMS ARE TO REMAIN PACKAGED AND SHIPPED WITH STATION.
 - 3 IF STATION IS SHIPPED LESS MOBILE, INSTALL P202 OF W2 (19C851585P16), (19B802554P18 AND P19) ONTO J202 OF THE INTERCONNECT BOARD AND P215 OF THE 554P18 AND P19 CABLE TO J215 ON INTERCONNECT BOARD AND LET P905 OR P1 HANG LOOSE.
 - 4 RADIO INSTALLATION
 - a. ASSEMBLE RADIO BRACKETS TO RADIO WITH SCREWS FINGER TIGHT.
 - b. ASSEMBLE RADIO WITH BRACKETS ATTACHED ONTO RADIO SUPPORT BRACKETS AND SLIDE FORWARD UNTIL FRONT EDGE OF BRACKETS CONTACTS INSIDE OF FLANGE ON THE FRONT CAP. ASSEMBLE 2 SCREWS ON SUPPORT BRACKETS TO SECURE RADIO BRACKETS.
 - c. ALIGN RADIO WITHIN OPENING OF THE FRONT CAP AND TIGHTEN 4 SCREWS IN RADIO BRACKETS TO MAINTAIN RADIO ALIGNMENT.

APPLICATION ASSEMBLY
Mobile Installation

(19D904704, Sh. 1, Rev. 3B)



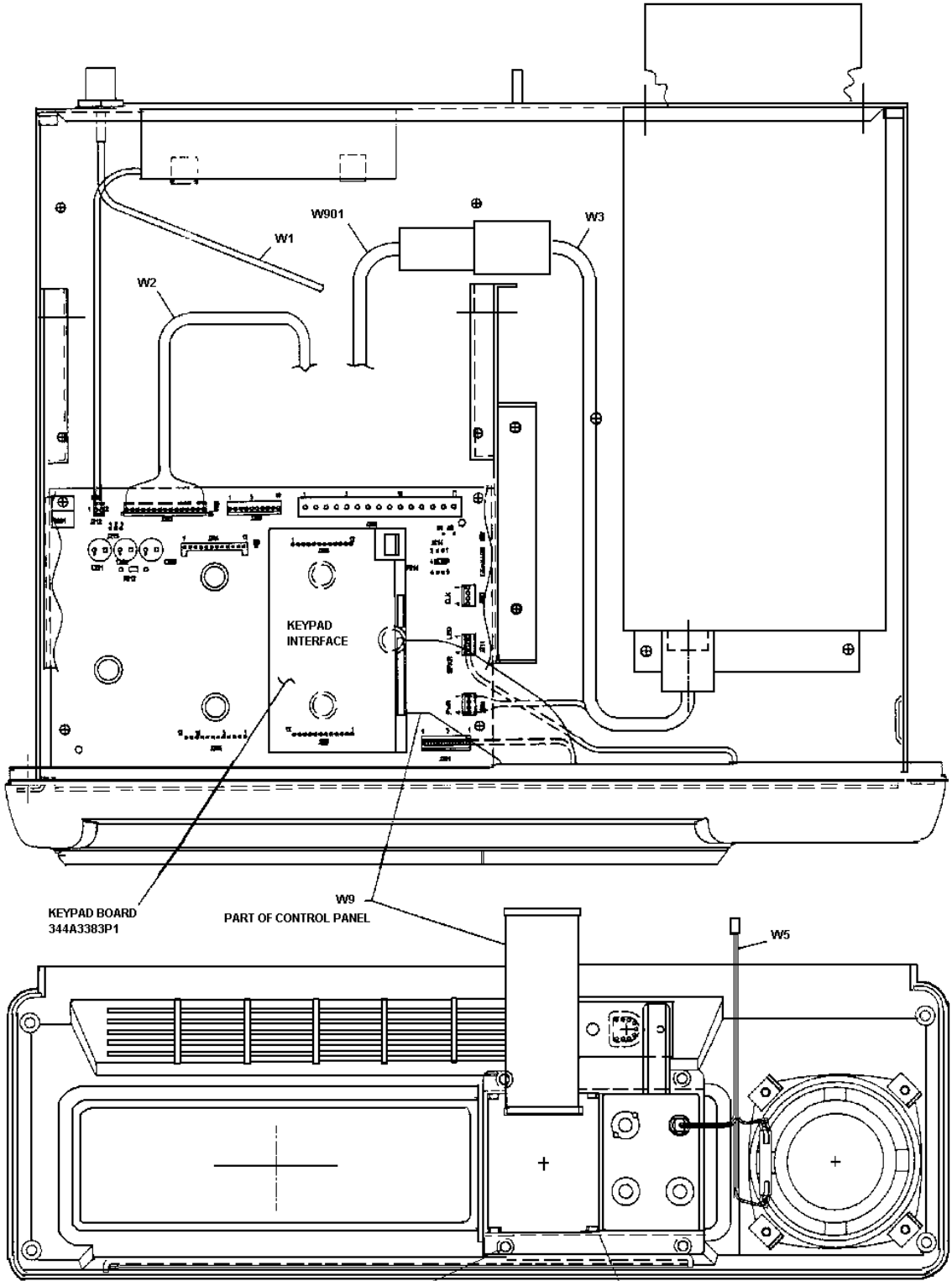
VIEW AT "A"



VIEW "C"

APPLICATION ASSEMBLY
Mobile Installation (Cont'd from Sh.1)

(19D904704, Sh. 2, Rev. 5)



2 MDX LOCAL W/KEYPAD
SAME AS PART 1 EXCEPT AS SHOWN

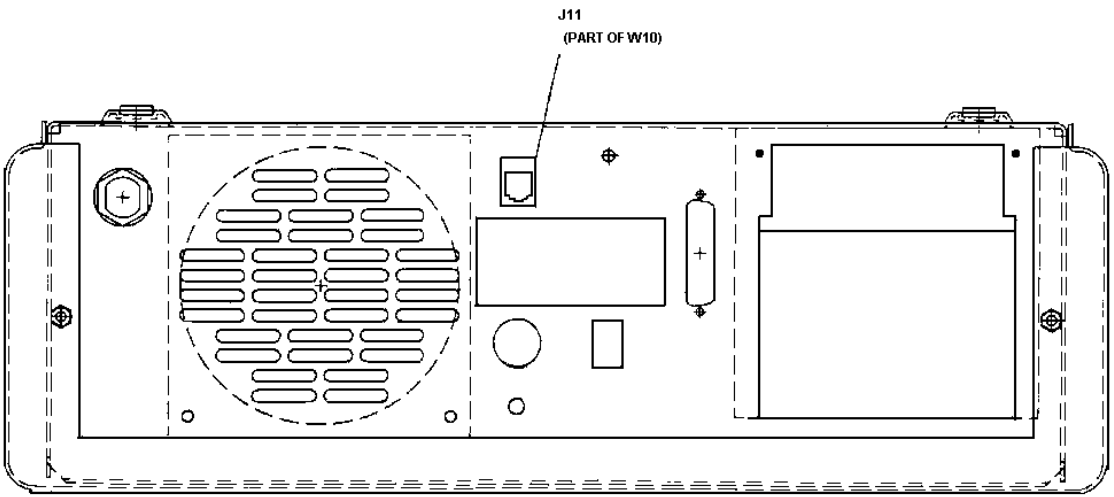
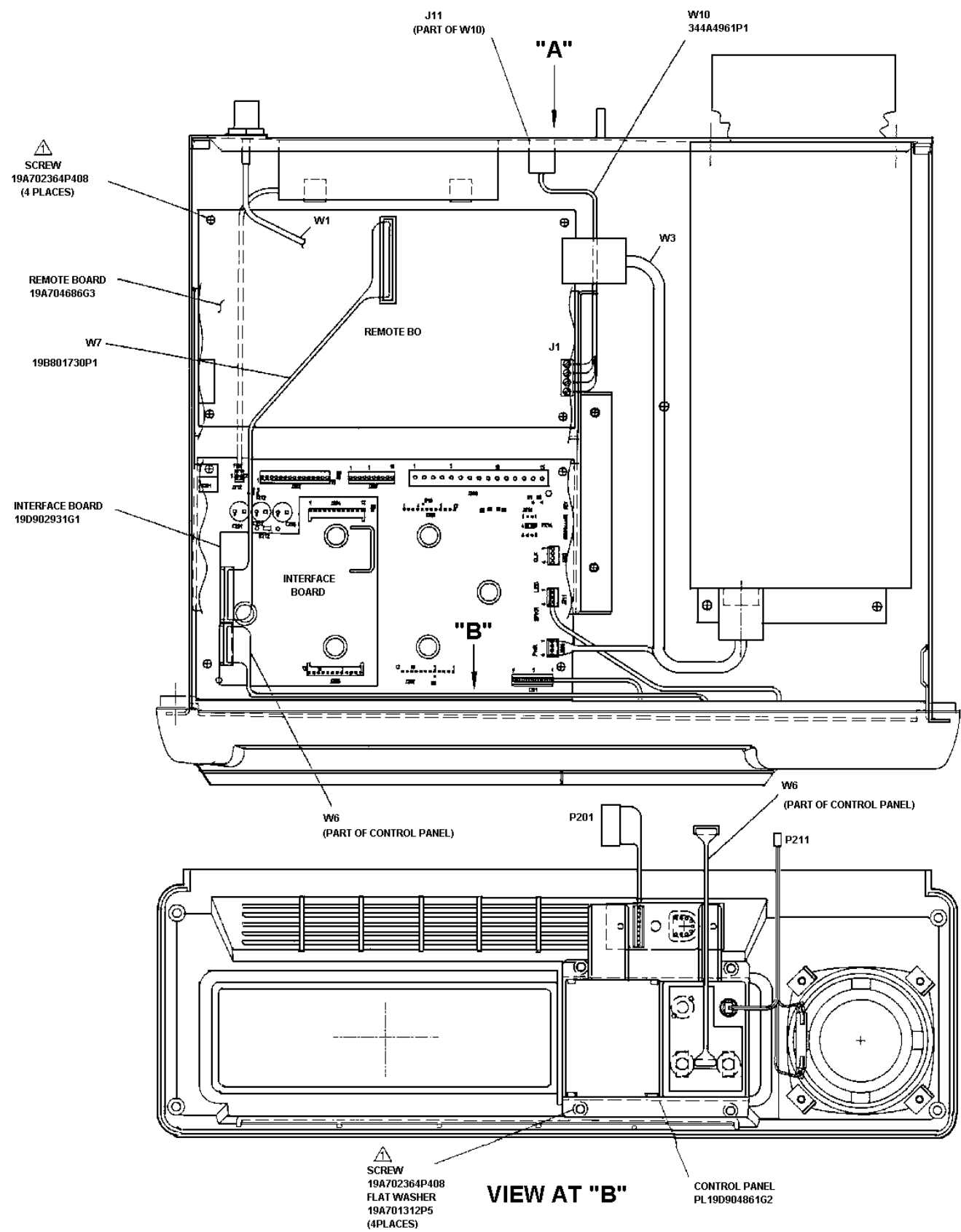
APPLICATION ASSEMBLY
MDX Local with Keypad

(19D904704, Sh. 3, Rev. 3)

SCREW
19A702364P408
FLAT WASHER
19A701312P5
(4 PLACES)

VIEW AT "B"

CONTROL PANEL
PL19D904861G3



VIEW AT "A"

3 UNIV LOCAL / DC REMOTE

SAME AS PART 1 EXCEPT AS SHOWN

NOTES:

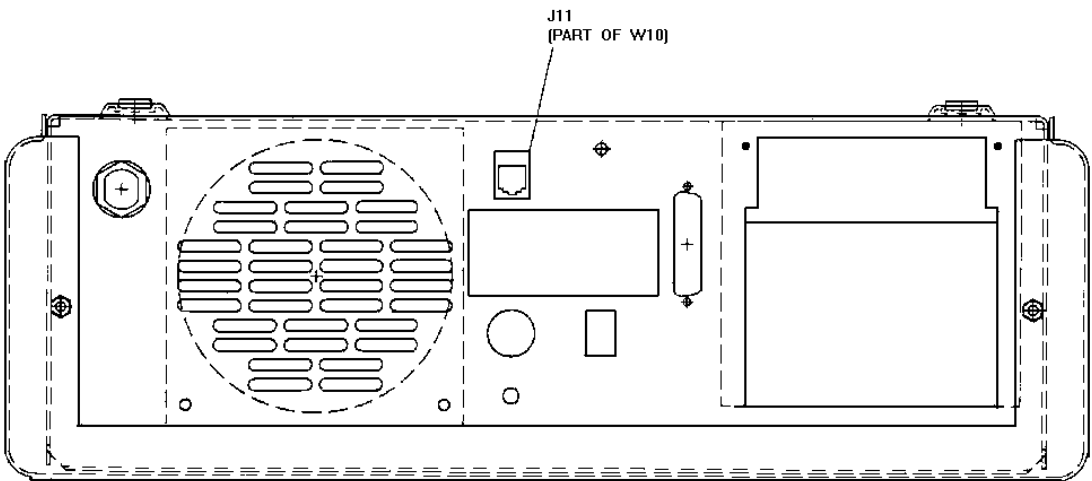
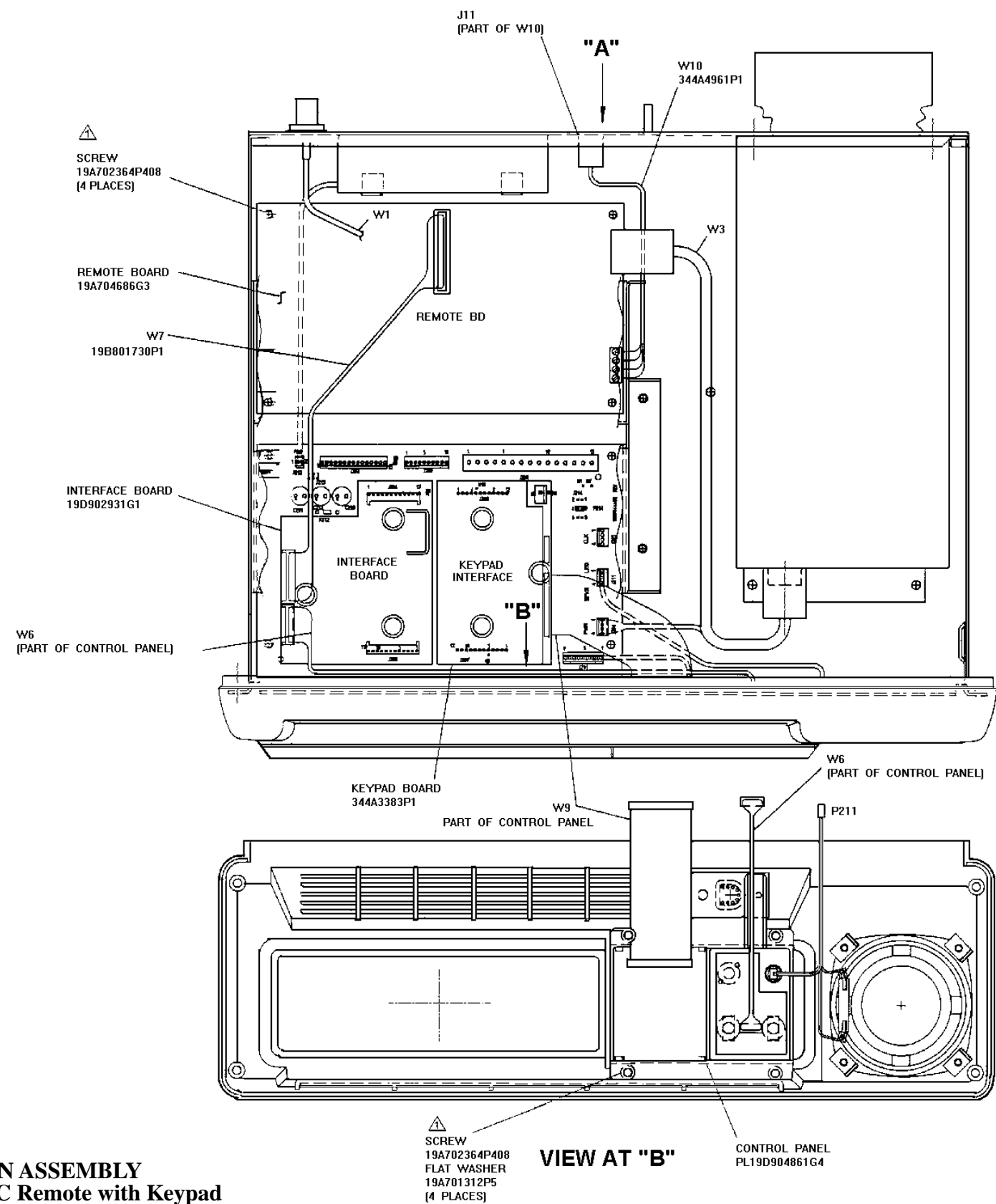
1. REMOVE P104 FROM INTERCONNECT BOARD (J204) BEFORE INSTALLING INTERFACE BOARD.
2. CONNECT WIRES OF W10 TO REMOTE BOARD J1 PER CHART .

FROM	TO
	DC REMOTE BD
W10 (YELLOW)	J1-3
W10 (GREEN)	J1-1
W10 (RED)	J1-4
W10 (BLACK)	J1-2

3. DISCARD CABLES SUPPLIED WITH REMOTE BOARD.

APPLICATION ASSEMBLY
Local/ DC Remote

(19D904704, Sh. 4, Rev. 2A)



VIEW AT "A"

MDX LOCAL / DC REMOTE W/KEYPAD

4 SAME AS PART 1 EXCEPT AS SHOWN

NOTES:

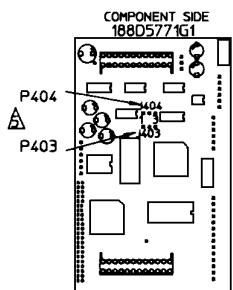
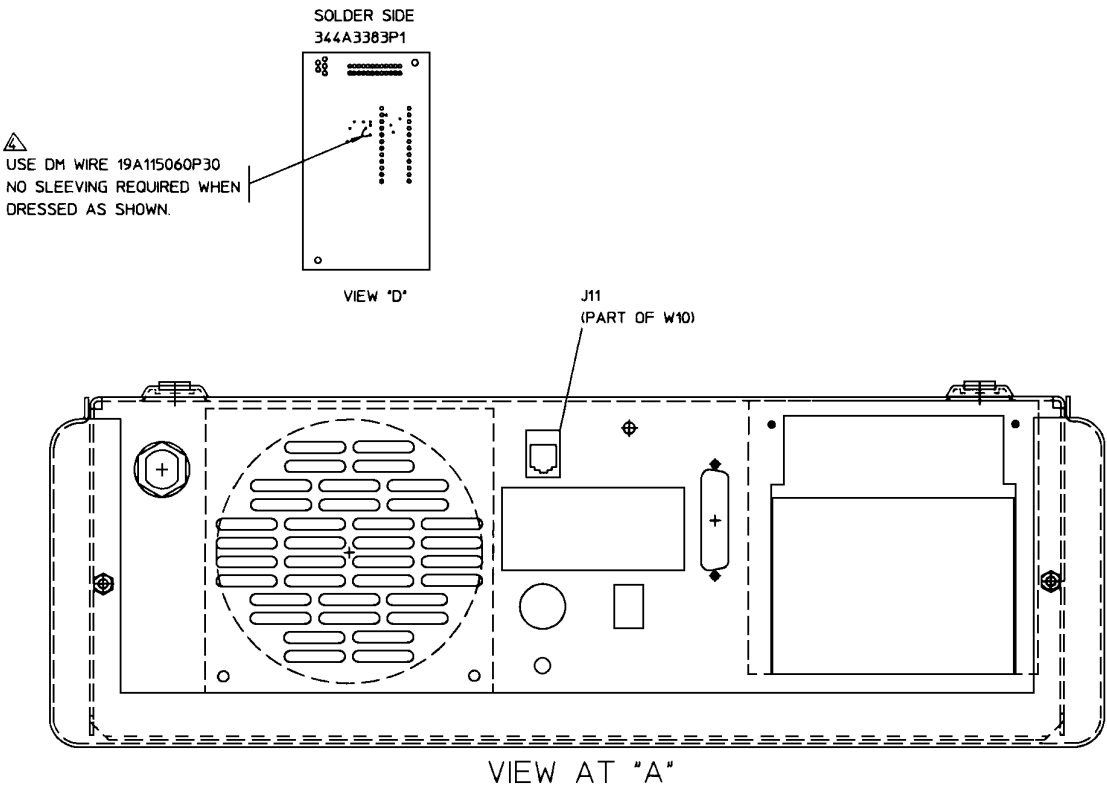
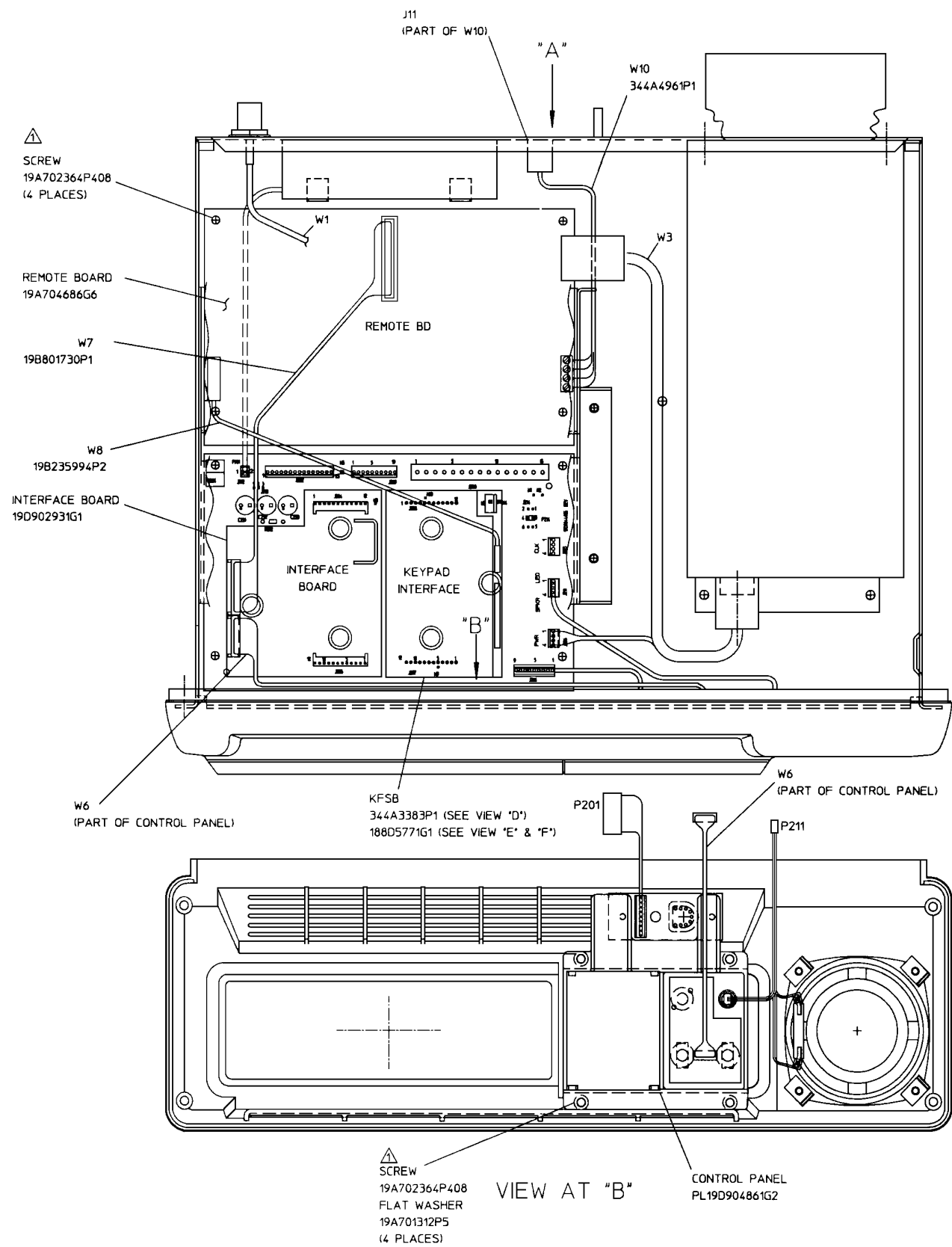
1. REMOVE P104 FROM INTERCONNECT BOARD (J204) BEFORE INSTALLING INTERFACE BOARD.
2. CONNECT WIRES OF W10 TO REMOVE BOARD J1 PER CHART

FROM	TO
	DC REMOTE BD
W10 (YELLOW)	J1-3
W10 (GREEN)	J1-1
W10 (RED)	J1-4
W10 (BLACK)	J1-2

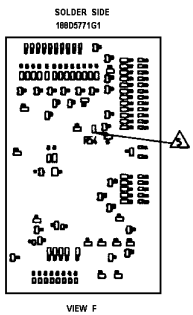
3. DISCARD CABLES SUPPLIED WITH REMOTE BOARD.

APPLICATION ASSEMBLY
MDX Local/DC Remote with Keypad

(19D904704, Sh. 5, Rev. 3)



VIEW "E"



5 UNIV LOCAL / TONE REMOTE SAME AS PART 1 EXCEPT AS SHOWN

NOTES:

1. REMOVE P104 FROM INTERCONNECT BOARD (J204) BEFORE INSTALLING INTERFACE BOARD.
2. CONNECT WIRES OF W10 TO REMOTE BOARD J1 PER CHART

FROM	TO
	TONE REMOTE BD
W10 (YELLOW)	J1-2
W10 (GREEN)	J1-4
W10 (RED)	J1-3
W10 (BLACK)	J1-1

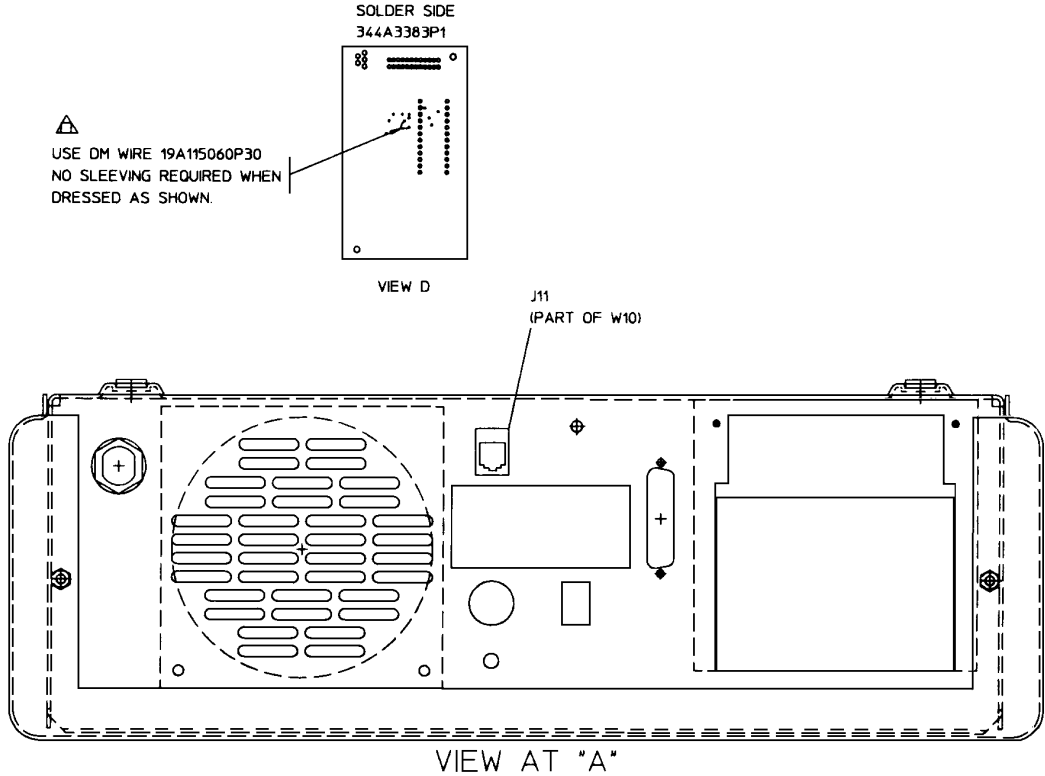
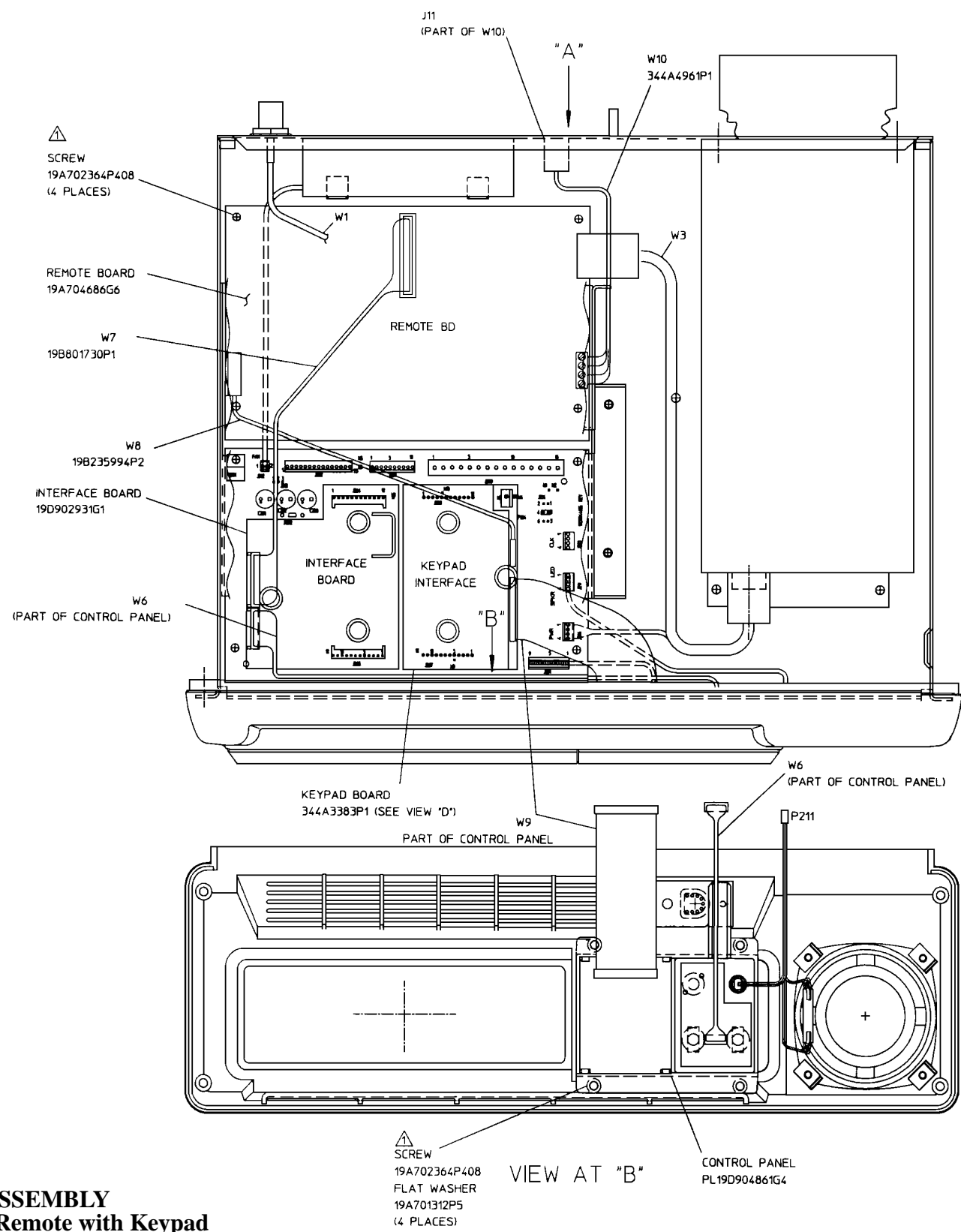
3. DISCARD CABLES SUPPLIED WITH REMOTE BOARD.

ADD JUMPER TO SOLDER SIDE OF 344A3383P1 ASSEMBLY
AS SHOWN AT VIEW "D" TO SHORT H2 TO GROUND.

FOR ORION SET P403 & P404 ON J403-2 & 3 AND J404-2 & 3.(VIEW E)
REMOVE R54 FOR ORION CONVENTIONAL TONE REMOTE OPERATION.(VIEW F)

APPLICATION ASSEMBLY MDX Local/Tone Remote

(19D904704, Sh. 6, Rev. 3)



UNIV LOCAL / TONE REMOTE W/KEYPAD

⑥

SAME AS PART 1 EXCEPT AS SHOWN

NOTES:

1. REMOVE P104 FROM INTERCONNECT BOARD (J204) BEFORE INSTALLING INTERFACE BOARD.
2. CONNECT WIRES OF W10 TO REMOTE BOARD J1 PER CHART

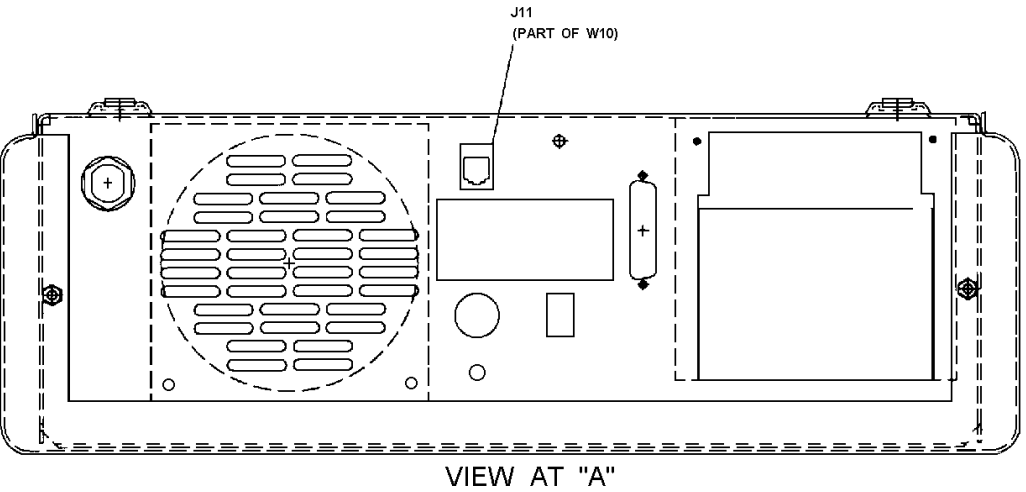
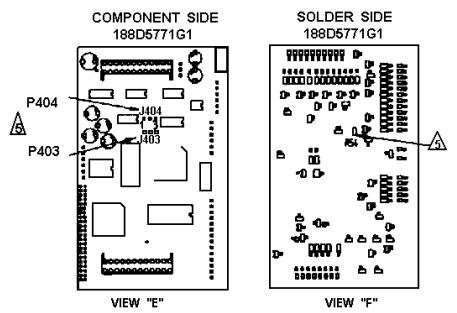
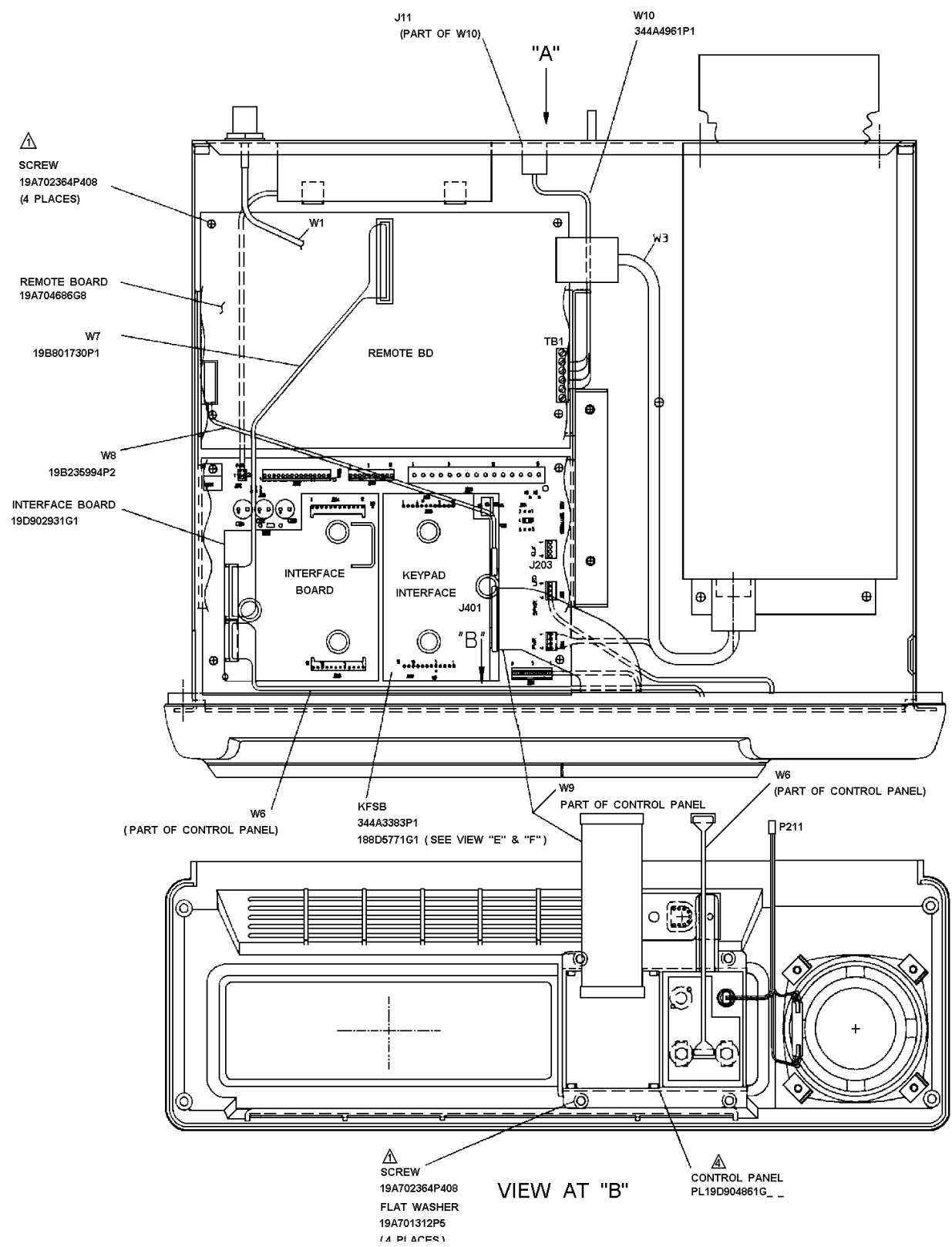
FROM	TO
W10 (YELLOW)	J1-2
W10 (GREEN)	J1-4
W10 (RED)	J1-3
W10 (BLACK)	J1-1

⚠ DISCARD CABLES SUPPLIED WITH REMOTE BOARD.
AS SHOWN AT VIEW 'D' TO SHORT H2 TO GROUND.

⚠ ADD JUMPER TO SOLDER SIDE OF 344A3383P1 ASSEMBLY
AS SHOWN ATR VIEW 'D' TO SHORT H2 TO GROUND.

APPLICATION ASSEMBLY
MDX Local/Tone Remote with Keypad

(19D904704, Sh. 7, Rev. 3)



UNIV EDACS LOCAL / REMOTE
SAME AS PART 1 EXCEPT AS SHOWN

- NOTES:
1. REMOVE P104 FROM INTERCONNECT BOARD (J204) BEFORE INSTALLING INTERFACE BOARD.
 2. CONNECT WIRES OF W10 TO REMOTE BOARD J1 PER CHART

FROM	TO
	EDACS REMOTE BD
W10 (YELLOW)	J1-5
W10 (GREEN)	J1-4
W10 (RED)	J1-3
W10 (BLACK)	J1-2

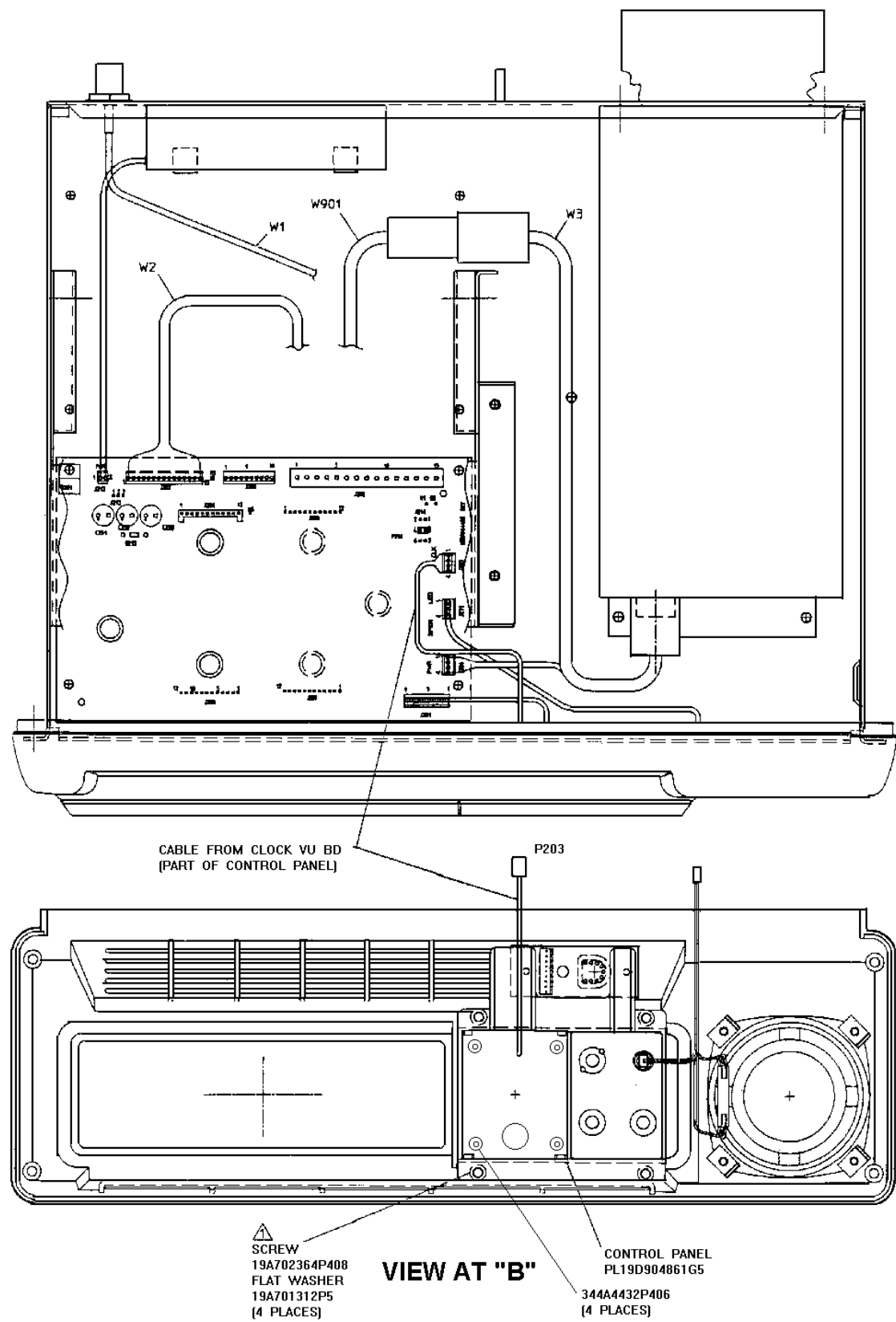
3. DISCARD CABLES SUPPLIED WITH REMOTE BOARD.

⚠ P401 OF W9 ON KEYPAD PLUGS ON J401 OF KEYPAD INTERFACE BD. P203 OF CABLE ON CLOCK/UV PLUGS ON J203 OF INTERCONNECT BD.

⚠ FOR ORION SET P403 & P404 ON J403-2 & 3 AND J404-2 & 3 (VIEW E)
FOR ORION REMOTE OPERATION R54 IS A 10 K OHM. (VIEW F)

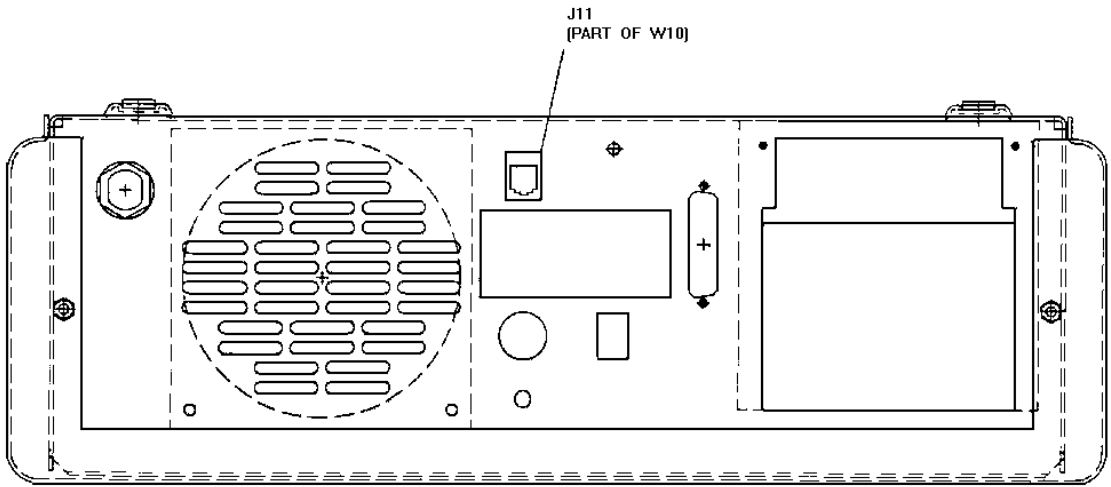
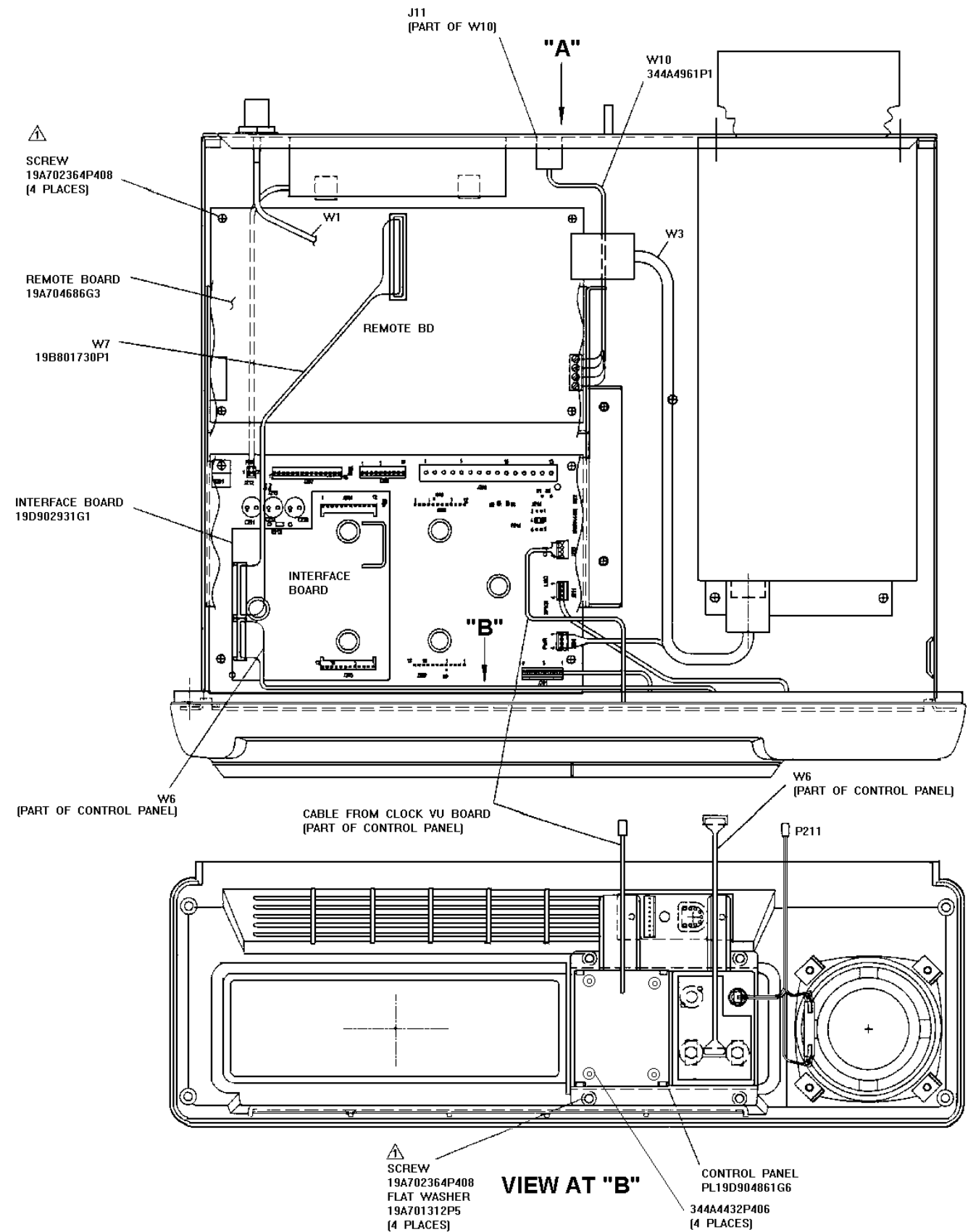
APPLICATION ASSEMBLY
EDACS MDX Local/Remote with Keypad

(19D904704, Sh. 8, Rev. 3)



8 UNIV LOCAL W/CLOCK
SAME AS PART 1 EXCEPT AS SHOWN

APPLICATION ASSEMBLY
Local with Clock
(19D904704, Sh. 9, Rev. 3A)



VIEW AT "A"

UNIV LOCAL / DC REMOTE W/CLOCK

9 SAME AS PART 1 EXCEPT AS SHOWN

NOTES:

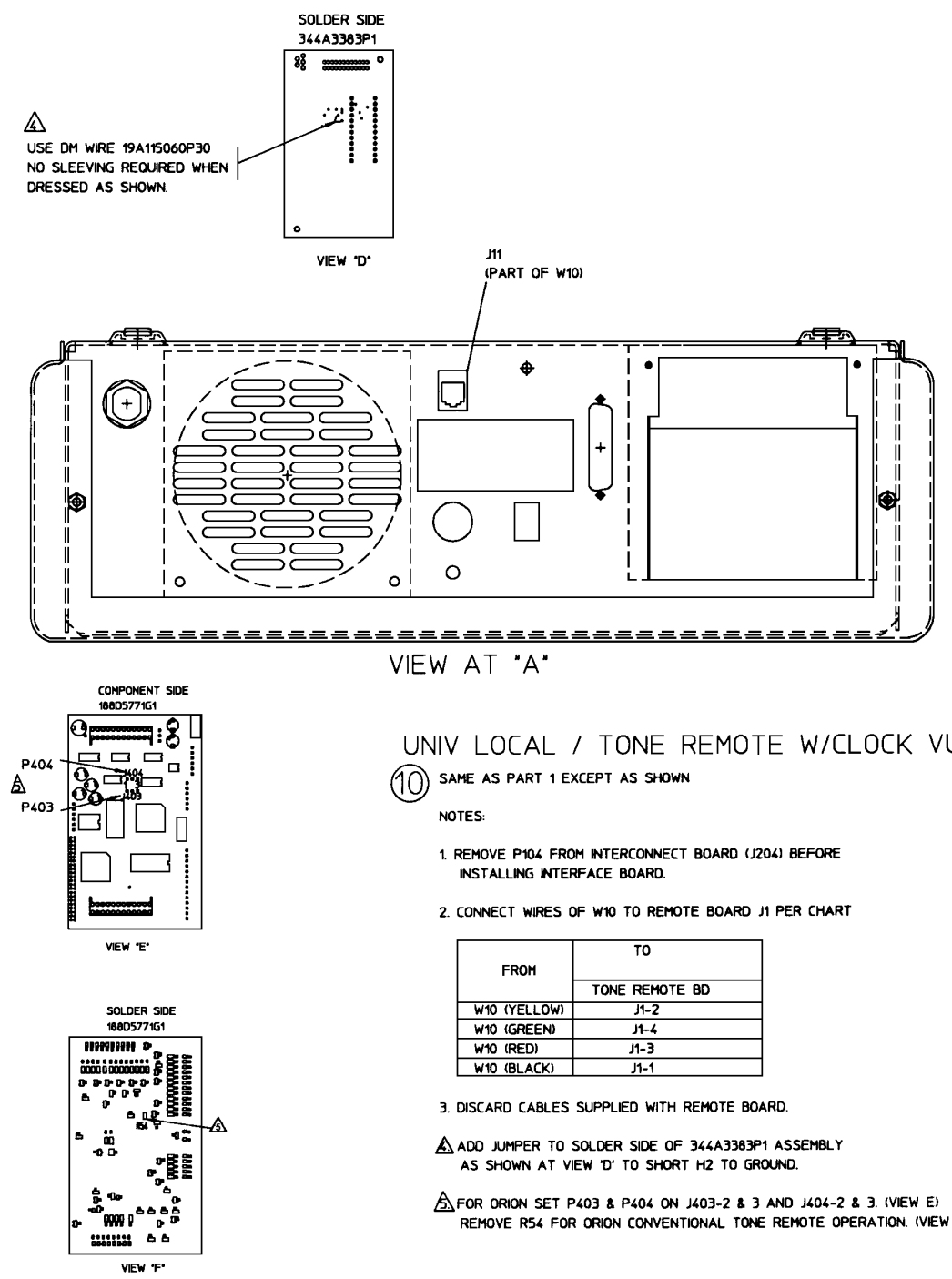
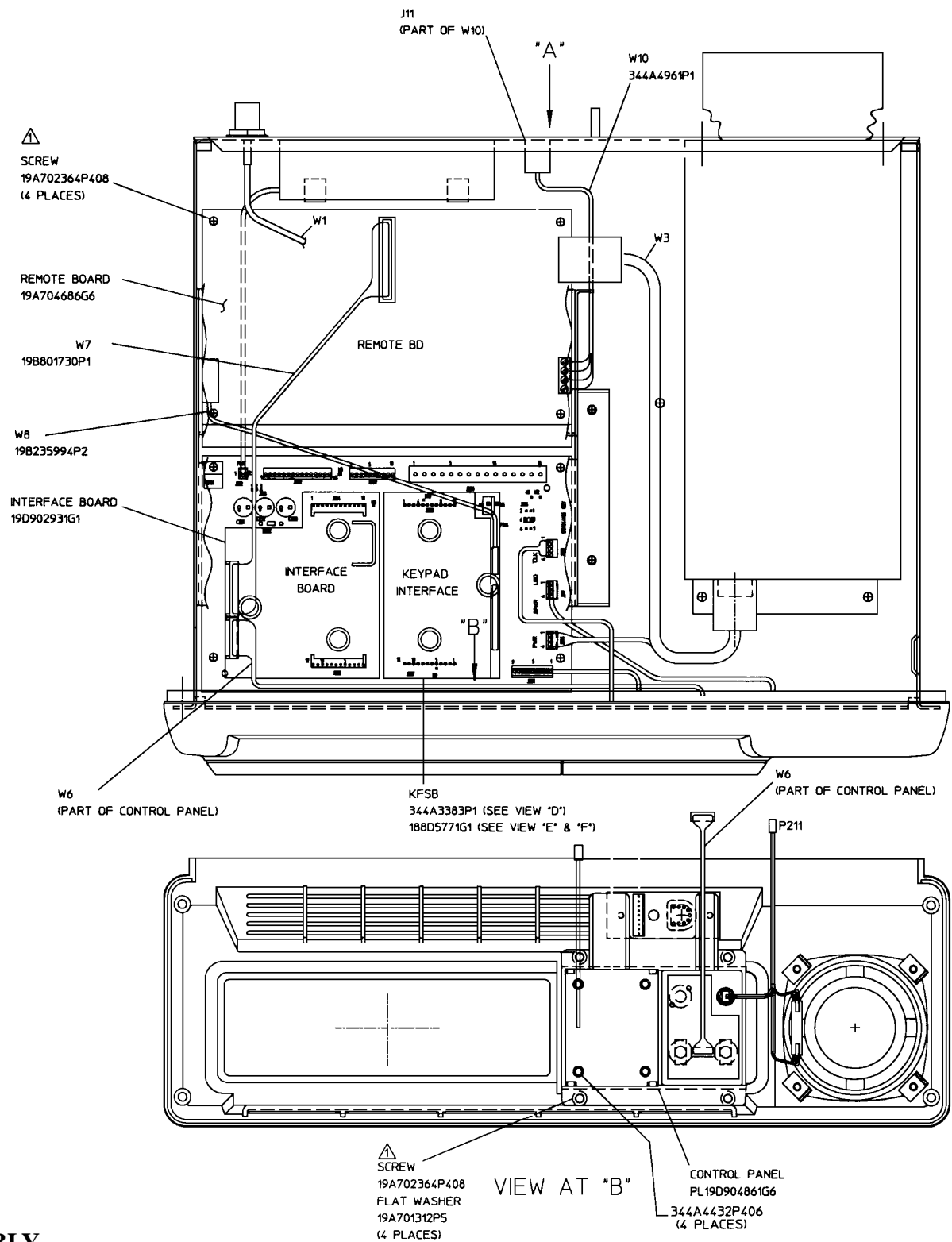
- 1. REMOVE P104 FROM INTERCONNECT BOARD (J204) BEFORE INSTALLING INTERFACE BOARD.
- 2. CONNECT WIRES OF W10 TO REMOTE BOARD J1 PER CHART

FROM	TO
	DC REMOTE BD
W10 (YELLOW)	J1-3
W10 (GREEN)	J1-1
W10 (RED)	J1-4
W10 (BLACK)	J1-2

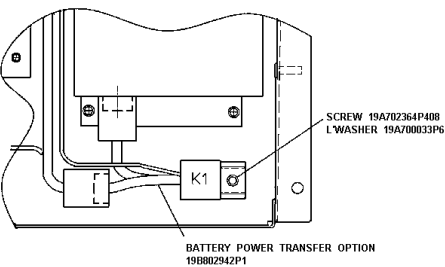
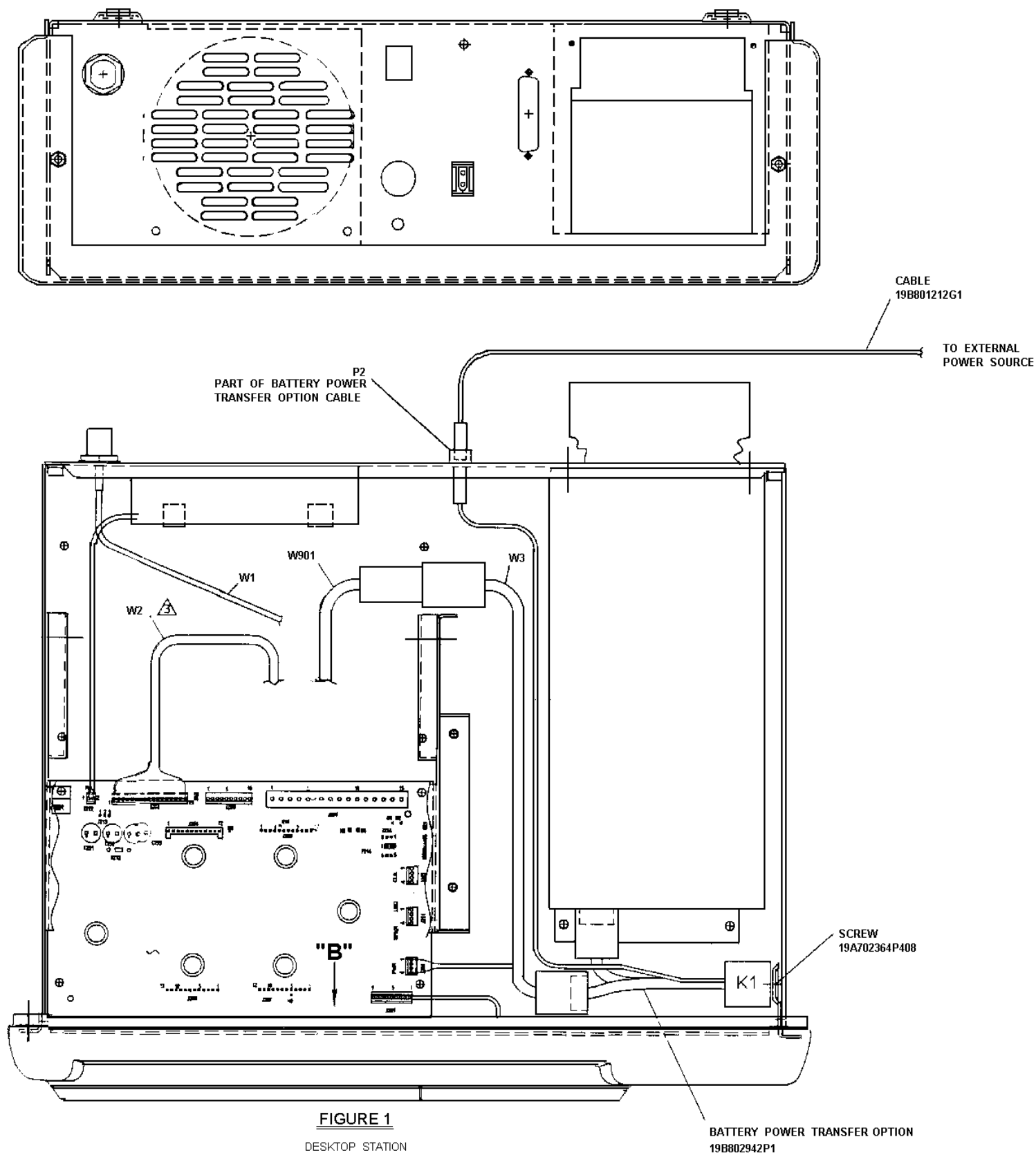
- 3. DISCARD CABLES SUPPLIED WITH REMOTE BOARD.

APPLICATION ASSEMBLY
Local/DC Remote with Clock

(19D904704, Sh. 10, Rev. 3A)



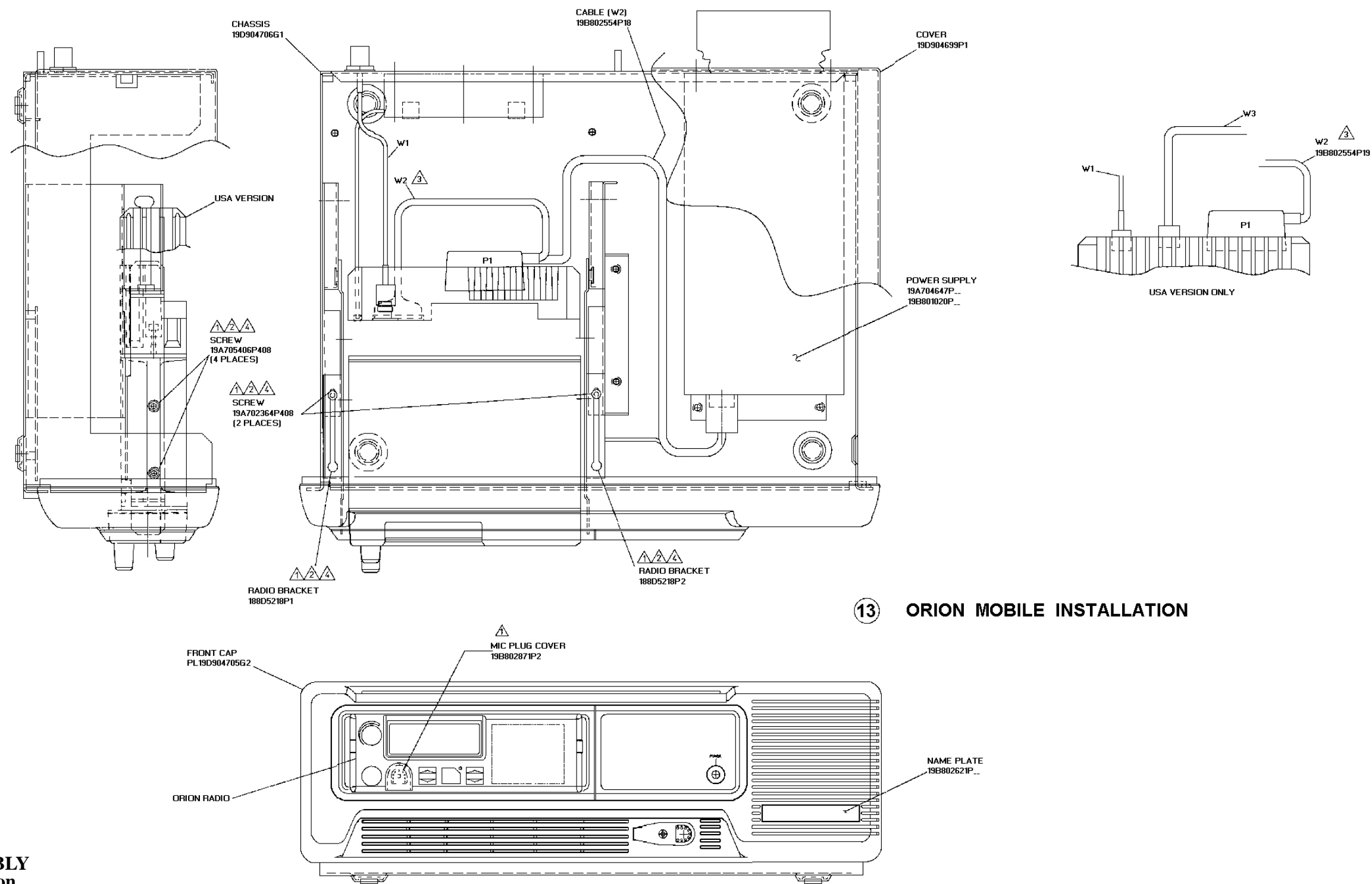
APPLICATION ASSEMBLY
Local/Tone Remote with Clock VU
(19D904704, Sh. 11, Rev. 4)



12 BATTERY POWER TRANSFER OPTION

APPLICATION ASSEMBLY
Battery Power Transfer Option

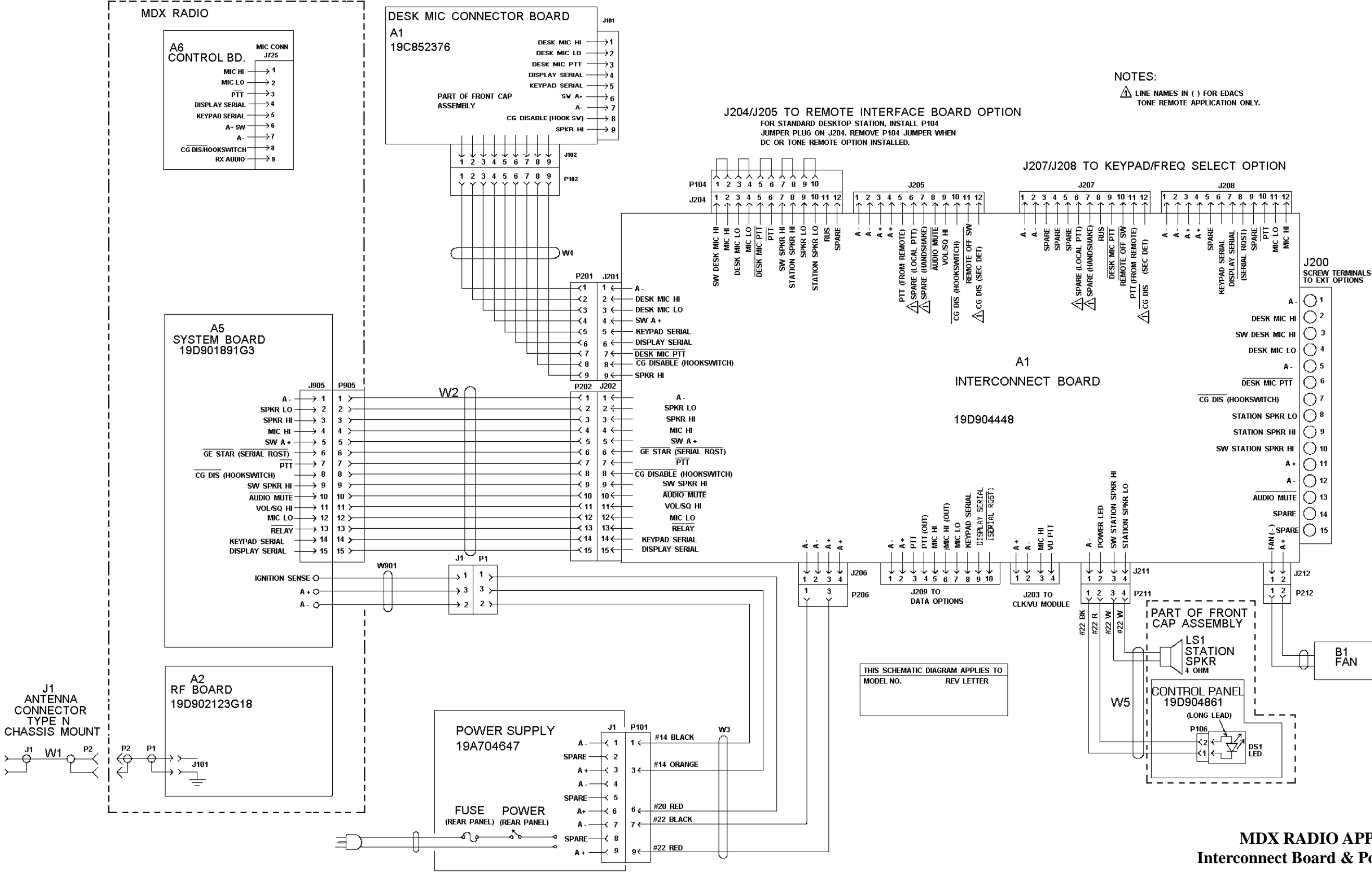
(19D904704, Sh. 12, Rev. 3A)



13 ORION MOBILE INSTALLATION

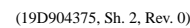
APPLICATION ASSEMBLY
ORION Mobile Installation

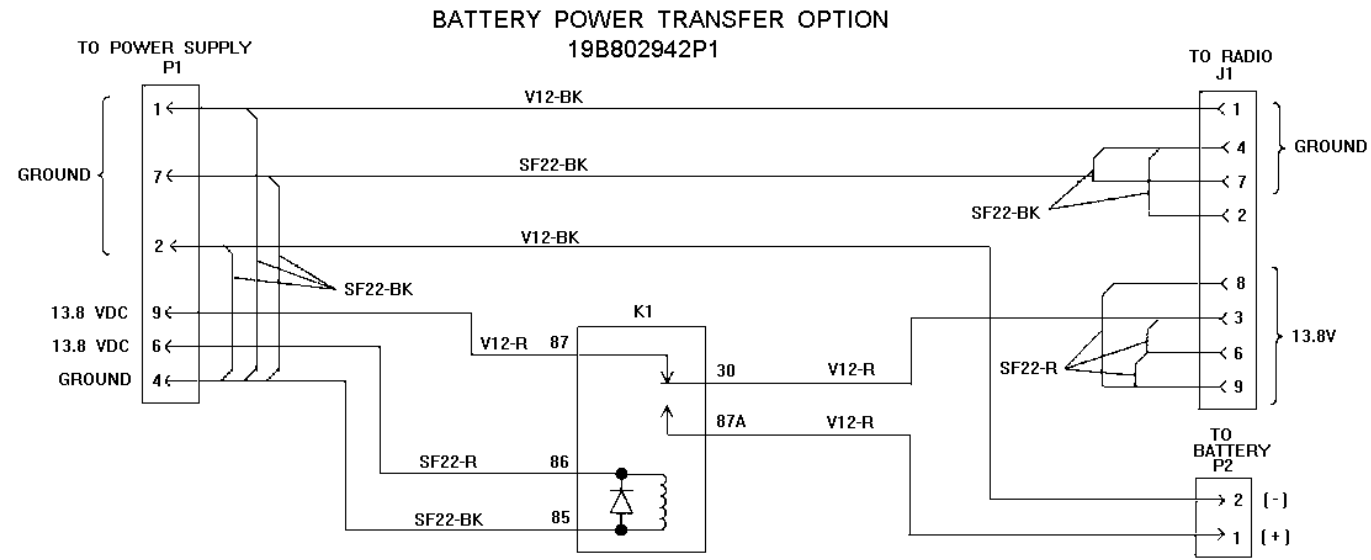
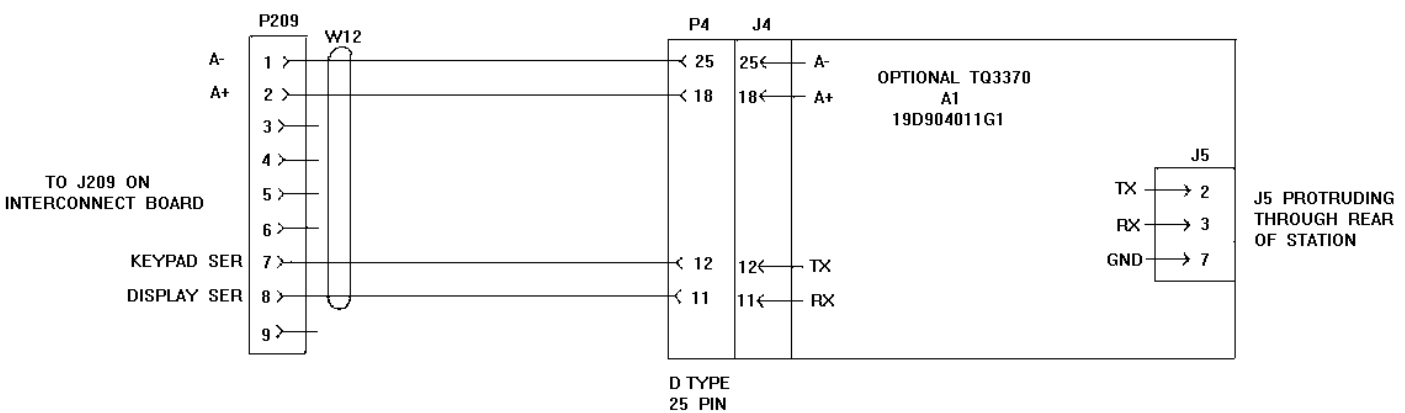
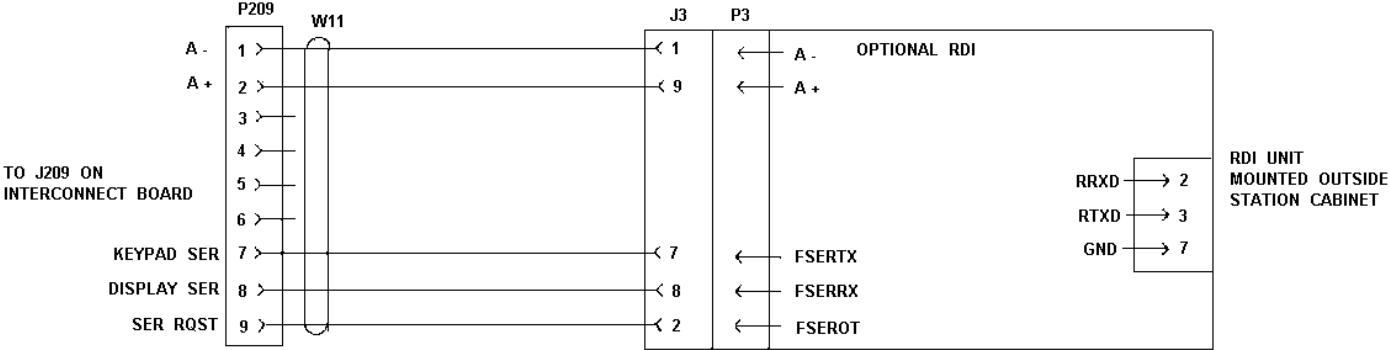
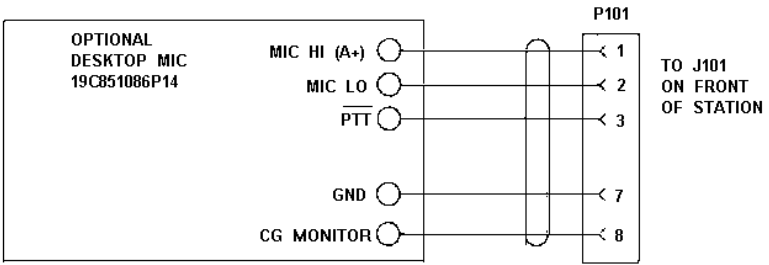
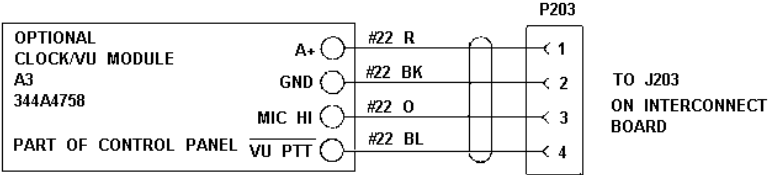
(19D904704, Sh. 13, Rev. 4)



MDX RADIO APPLICATION
Interconnect Board & Power Supply

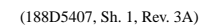
(19D904375, Sh. 1, Rev. 1)

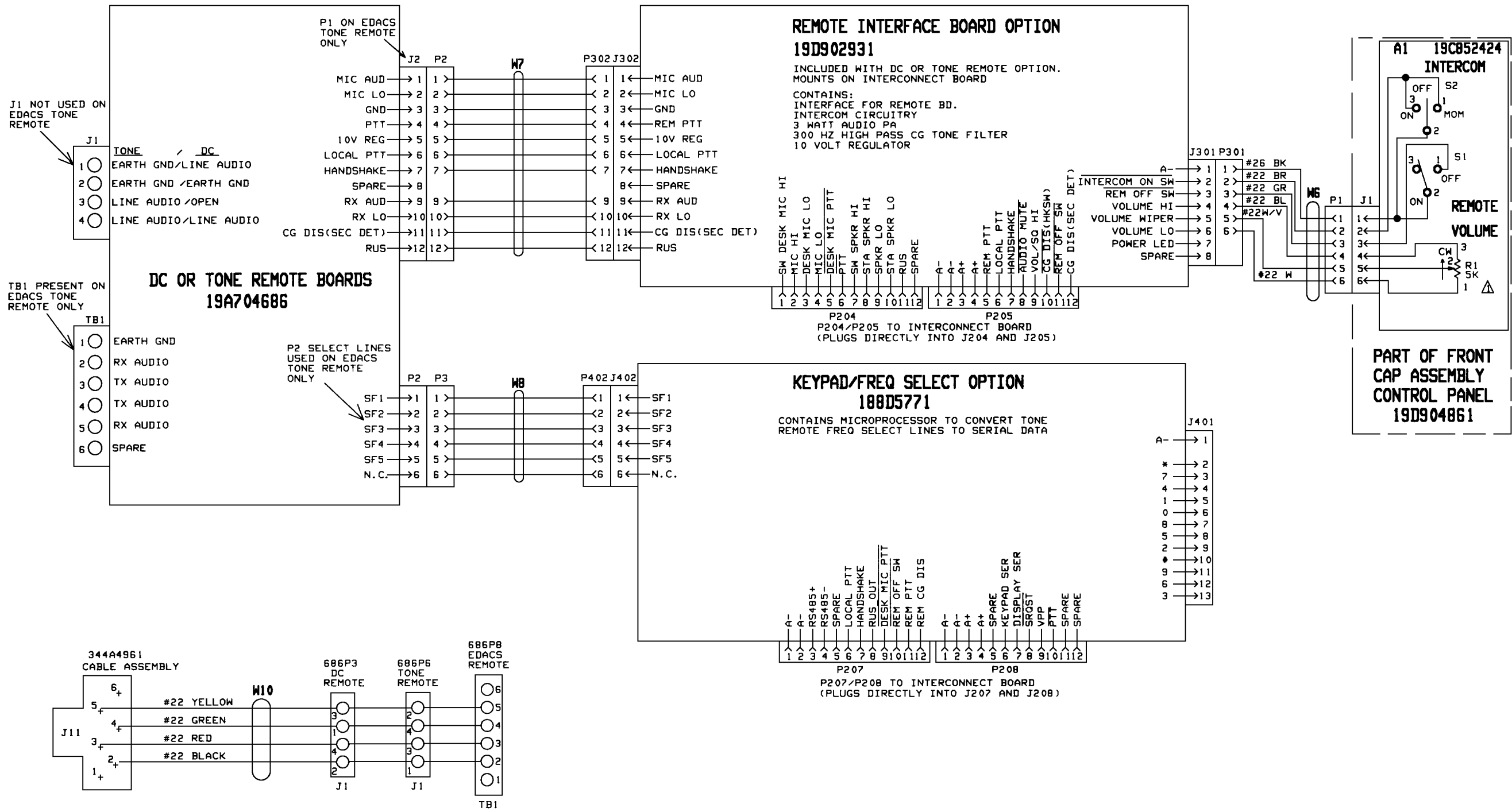


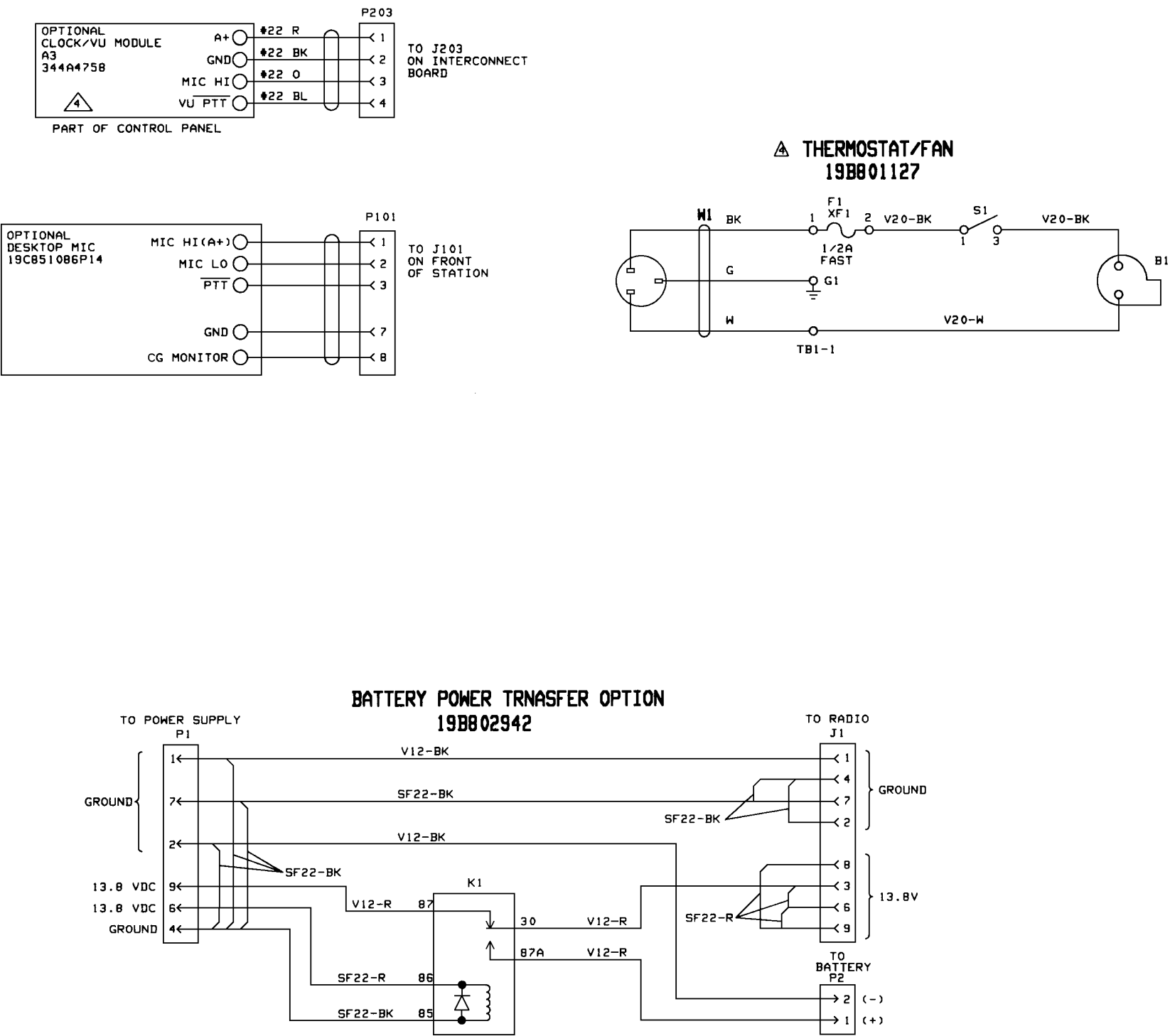


MDX RADIO APPLICATION
Battery Power Transfer Option

(19D904375, Sh. 3, Rev. 1)







ORION RADIO APPLICATION
Battery Power Transfer, Clock/VU Meter
Option and Desktop Microphone, Thermostat/Fan
(188D5407, Sh. 3, Rev. 3A)

This page intentionally left blank