

**INSTRUCTIONS
FOR
CABINET BLOWER ASSEMBLY 19A121432-G1
(Option 7719)**

Cabinet Blower Assembly 19A121432-G1 is designed for use in MASTR Progress Line Pole Mount Stations and mounts at the bottom of the station cabinet. The fan blades pull air in through the screen in the bottom of the cabinet and the air is expelled through the screened opening at the top (front) of the cabinet. Automatic operation of the blower is provided by a thermostat which mounts at the top of the swing-out rack. The control circuit is wired so that the blower operates when station power is ON and the cabinet temperature reaches approximately 110° Fahrenheit. When the cabinet temperature drops below the threshold of the thermostat (approximately 95° Fahrenheit) the blower turns off.

MAINTENANCE

MUFFIN FAN LUBRICATION

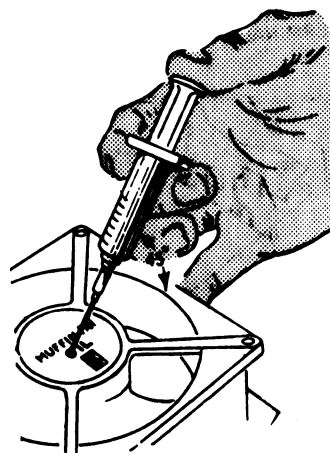
The muffin fan should be lubricated at least once a year. At high ambient temperatures, lubrication will be required more frequently. A good grade of light instrument oil, such as Aeroshell Fluid No. 12 or Esso Unavis® P-38 should be used.

Oiler Kit No. 19263 (list price \$2.50, subject to change) is recommended for oiling the muffin pan. This kit permits oiling without removing the fan from its mounting. A syringe and a supply of oil are provided in the kit.

OILING INSTRUCTIONS

To inject oil in the bearing:

1. Position the needle at an angle of 45° to the seal on the label
- * 2. Pierce gold seal label and the concealed self-sealing rubber cap under the label.
3. Depress plunger firmly until oil has gone down one calibration line.
4. Withdraw the needle and wipe off excess oil. Oil may be left in the syringe for future use.



(DF-9014)

FILTER SERVICING

The filter element should be replaced or washed in warm water with a mild detergent solution at intervals determined by the dust content of the ambient air.

PARTS LIST

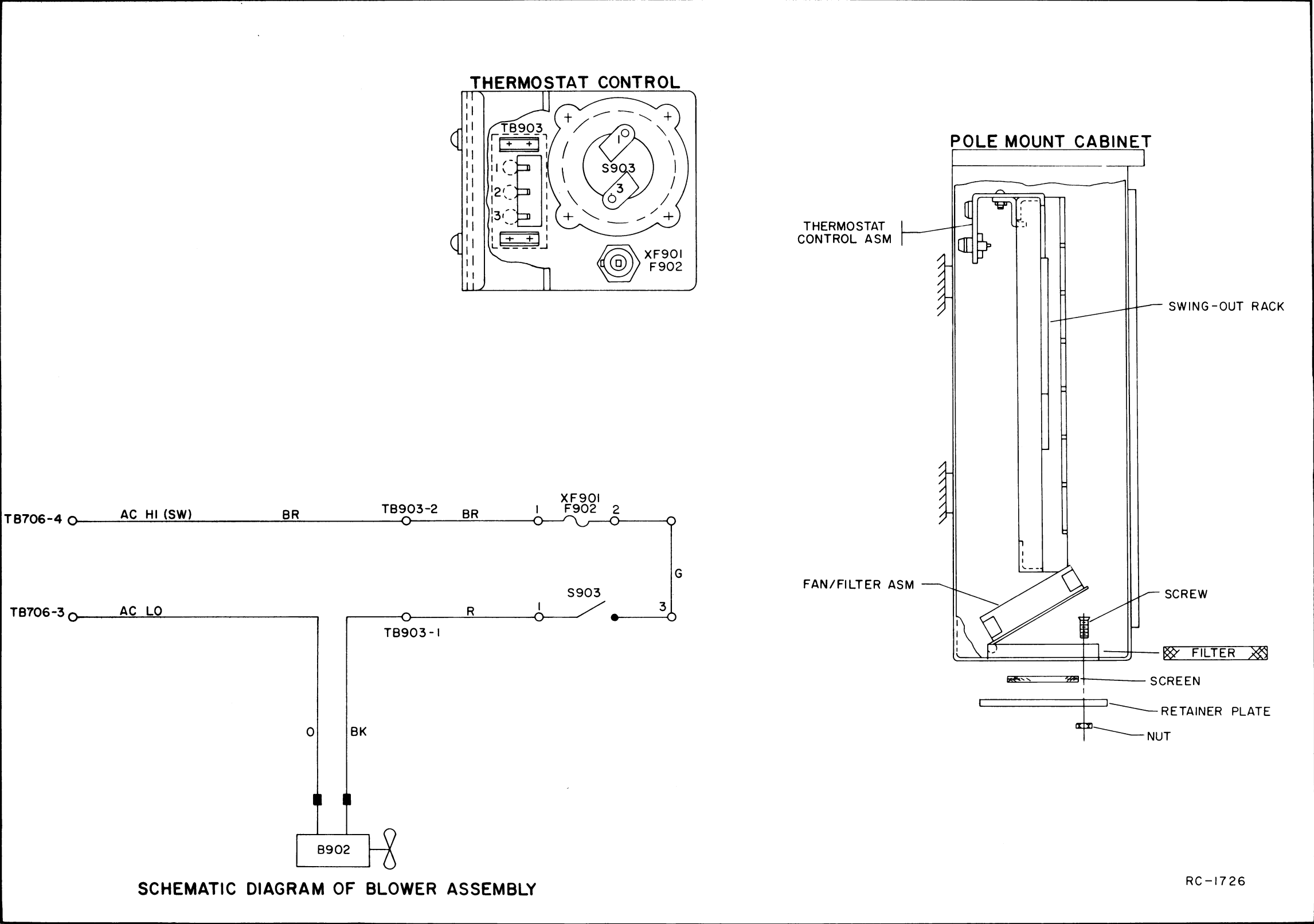
BLOWER ASSEMBLY
19A121432-G1

| SYMBOL | G-E PART NO. | DESCRIPTION |
|--------|--------------|---|
| | | ----- MISCELLANEOUS ----- |
| | 19A115366-P1 | Air filter. |
| | | FAN/FILTER ASSEMBLY 19B204736-G1 |
| B902 | 5493477-P1 | Fan assembly, single phase: 115 VAC, 60 Hz, 14 w, ccw rotation; sim to Rotron "Gold Seal Venturi Muffin Fan". |
| | | THERMOSTAT CONTROL 19B204730-G1 |
| | | ----- FUSES ----- |
| F902 | 7487942-P3 | Slow blowing: 1/2 amp at 250 v; sim to Bussman MDL-1/2. |
| | | ----- SWITCHES ----- |
| S903 | 5496655-P1 | Thermostat, snap-action: SPST, close on temp rise, auto reset, close at 110°F ±5°F, open at 95°F ±5°F, 25 amp at 120/240 VAC; sim to Metals and Controls 20400-F17-64-F110-1.5. |
| | | ----- TERMINAL BOARDS ----- |
| TB903 | 19C301086-P1 | Feed-thru: phen, 3 terminals; sim to GE CR151D75403AB. |
| | | ----- SOCKETS ----- |
| XF901 | 19B209005-P1 | Fuseholder, post type, phen: 15 amps at 250 v; sim to Littelfuse 342012. |
| | | ----- MISCELLANEOUS ----- |
| | 7160508-P2 | Spring nut. (Used to mount TB903). |

*COMPONENTS ADDED, DELETED OR CHANGED BY PRODUCTION CHANGES.

MOBILE RADIO DEPARTMENT
GENERAL ELECTRIC COMPANY
LYNCHBURG, VIRGINIA 24502

Printed in U.S.A.



SCHEMATIC & OUTLINE DIAGRAMS
 CABINET BLOWER ASSEMBLY
 19A121432-G1
 RC-1726

