

F-1058

FIELD INSTALLATION INSTRUCTIONS
FOR
MODIFICATION KIT 19A122614-G1
(OPTION 5587)

Modification Kit 19A122614-G1 is used in Porta-Mobil Rechargeable Power Supplies Models 4EP44A10 (Rev. C), 4EP44A11 (Rev. B & earlier), and 4EP44B10 (Rev. A & earlier) to make these power supplies compatible with Porta-Mobil Vehicular Charger Models 4EP53A10-12. Check the power supply model & revision letter and select the appropriate modification procedure for that model and revision.

IMPORTANT

Disconnect battery lead at J502 before performing the following steps.

Models 4EP44A10 (Rev. C) and 4EP44A11 (no revision)

1. Unsolder W-G and BK wires from TB10-1. Remove #4-40 x 5/16" mounting hardware from TB10. Keep the mounting hardware and discard TB10.
2. Mount new terminal board (TB50) in place of TB10, using mounting hardware removed in step 1. Solder W-G and BK wires removed in step 1 to TB50-4.
3. Install a diode (CR1) between J503-2 & J503-4. Sleeve leads using sleeving in kit.
4. Install a diode (CR2) between TB50-1 & TB50-3.
5. Solder #22 W-BK-0 lead supplied with kit to J503-5. Route other end of the wire through H1 and solder to TB50-3. Spot tie wire to W501.
6. Solder #22 W-G-0 lead supplied with kit between H6 (at J502) and TB50-1.
7. Mark nameplate with option number 5587.

Model 4EP44B10 (no revision)

1. Remove #4-40 x 1/4" screw (see Modification Diagram) and use to mount terminal board (TB50) supplied with kit.
2. Install a diode (CR1) between J503-2 & J503-4. Sleeve leads with sleeving supplied in kit.
3. Install a diode (CR2) between TB50-1 and TB50-3.

4. Install resistor R1 between TB50-1 & TB50-4.
5. Solder #22 W-BK-0 lead supplied with kit to J503-5. Route other end of the wire through H1 and solder to TB50-4. Spot tie wire to W501.
6. Solder #22 W-G-0 lead supplied with kit between H6 (at J502) and TB50-3.
7. Mark nameplate with option number 5587.

Model 4EP44A11 (Rev. A & B)

1. Install a diode (CR1) between J503-2 & J503-4. Sleeve leads using sleeving in kit.
2. Install a diode (CR2) between TB10-1 & TB10-3.
3. Mark nameplate with option number 5587.

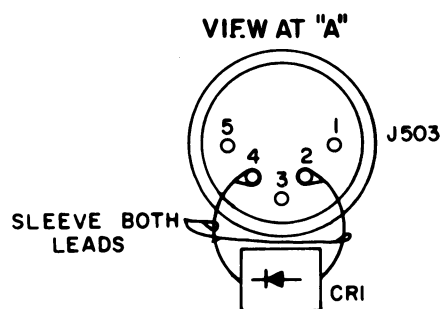
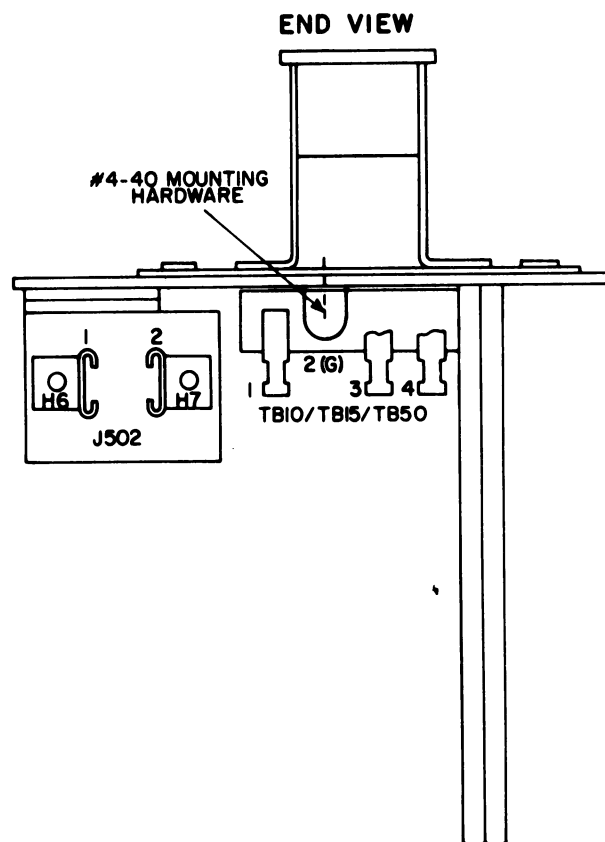
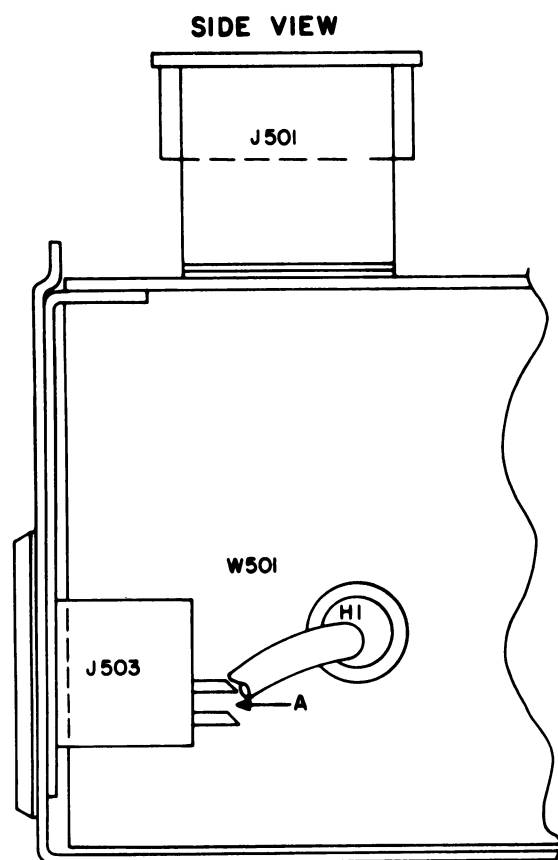
Model 4EP44B10 (Rev. A)

1. Install a diode (CR1) between J503-2 & J503-4. Sleeve both leads with sleeving supplied in kit.
2. Install a diode (CR2) between TB15-1 & TB15-3.
3. Install resistor R1 between TB15-1 & TB15-4.
4. Mark nameplate with option number 5587.

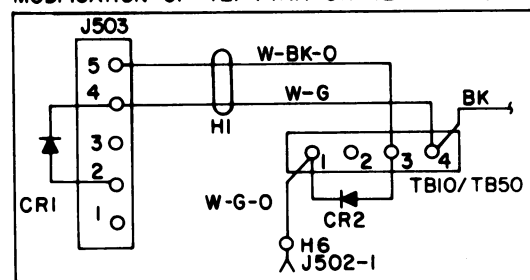
PARTS LIST
MODIFICATION KIT 19A122614-G1

SYMBOL	G-E PART NO.	DESCRIPTION
CR1 & CR2	19A115823-P1	Diode: Silicon
R1	19B209022-P15	Resistor: Wirewound, 1 ohm $\pm 5\%$, 2 W.
TB50	7487424-P5	Terminal Board: Miniature, phenolic, 3-term.

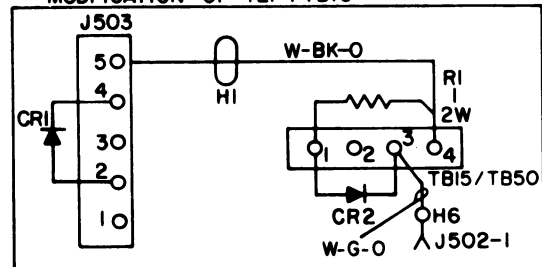
COMMUNICATION PRODUCTS DEPARTMENT
GENERAL ELECTRIC COMPANY
LYNCHBURG, VIRGINIA



MODIFICATION OF 4EP44A11 OR 4EP44A10 (REV.C)



MODIFICATION OF 4EP44B10



RC-1467

Installation Diagram

MODIFICATION KIT 19A122614-G1
(OPTION 5587)

RC-1467

