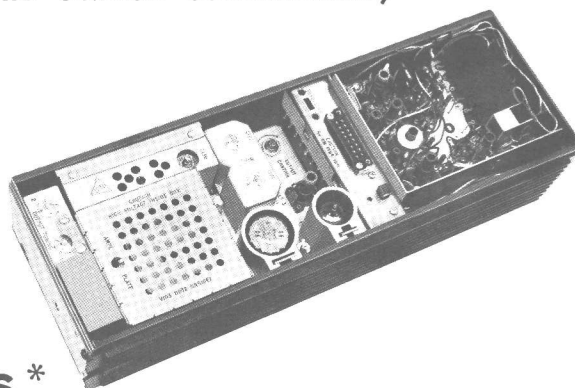


MASTR

Progress Line

TRANSMITTER/DRIVER MODELS 4ET59C42 & 43
(For use in 960-MHz Station Combinations)



SPECIFICATIONS *

Frequency Range:	476-480 MHz
Power Output (To Converter Panel):	25 watts minimum
Crystal Multiplication Factor:	36
Frequency Stability:	$\pm 0.0002\%$ (-35°C to $+60^{\circ}\text{C}$)
Modulation:	Adjustable from 0 to ± 15 kHz swing with instantaneous modulation limiting.
Audio Frequency Characteristics:	Within ± 1 dB to -3 dB of a 6 dB/octave pre-emphasis from 300 to 3000 Hertz per EIA standards. Post limiter filter per FCC and EIA.
Distortion:	Less than 5%
Tubes & Transistors:	Transmitter with no Options: 3 tubes 6 silicon transistors 4 diodes & 2 varactors 1 ICOM module

*These specifications are intended primarily for the use of the serviceman. Refer to the appropriate Specification Sheet for the complete specifications.

TABLE OF CONTENTS

SPECIFICATIONS.....	Cover
DESCRIPTION.....	1
CIRCUIT ANALYSIS.....	1
Power Inputs.....	1
Integrated Circuit Oscillator Module (ICOM).....	2
Audio Amplifiers and Limiter.....	2
Phase Modulator.....	2
Amplifiers and 1st and 2nd Multipliers.....	2
3rd Multiplier.....	2
IPA and Tripler.....	3
Power Amplifier.....	3
Channel Guard Low-Pass Filter.....	3
MAINTENANCE.....	4
Tube Replacement.....	4
Alignment Procedure.....	5
Test Procedure.....	6
Power Output.....	6
Tone Replacement.....	6
Voice Deviation.....	6
Troubleshooting.....	7
OUTLINE DIAGRAM.....	8
SCHEMATIC DIAGRAM.....	9
PARTS LIST.....	10
Transmitter.....	10
Channel Guard Encoder.....	12
PRODUCTION CHANGES.....	11

ILLUSTRATIONS

Figure 1 Transmitter Block Diagram.....	1
Figure 2 Power Amplifier Plate Box With Cover Removed.....	4
Figure 3 ICOM Frequency Connection Curves.....	5

WARNING

No one should be permitted to handle any portion of the equipment that is supplied with high voltage; or to connect any external apparatus to the units while the units are supplied with power. KEEP AWAY FROM LIVE CIRCUITS.

DESCRIPTION

The MASTR Progress Line FM Transmitter/Driver Models 4ET59C42 & 4ET59C43 are crystal controlled, phase-modulated transmitters that operate within the 476-480 megahertz range. The transmitters are designed for use with a varactor-doubler converter panel to provide operation in the 952-960 megahertz range.

- Transistorized Exciter Board, with audio, modulator, amplifier, and multiplier stages.
- Integrated Circuit Oscillator Module (ICOM).
- Multipliers, IPA and power amplifier stages.
- Optional transistorized Channel Guard Low-Pass Filter.

All input leads to the transmitters are individually filtered by the 20-pin feed-through by-pass connector J101. The output passes through a two-section, band-pass filter, followed by a low-pass filter.

CIRCUIT ANALYSIS

Six silicon transistors and only three tubes are used in the transmitters. The frequency of the plug-in ICOM modules ranges from 13.22 to 13.33 megahertz. The oscillator frequency is multiplied 36 times.

A centralized metering jack (J102) is provided for use with General Electric Test Sets 4EX3A10 or 4EX8K10. The Test Set meters the multiplier, amplifier and PA stages as well as filament and regulated supply voltages. The metering jack also provides access to audio microphone and push-to-talk leads.

POWER INPUTS

The following supply voltages are connected from the power supply to the transmitter through the 20-pin by-pass connector J101:

- Pin 3: Filament
- Pin 4: +300 volts MULT & IPA B+
- Pin 5: PA B+
- Pin 8: -45 volts bias

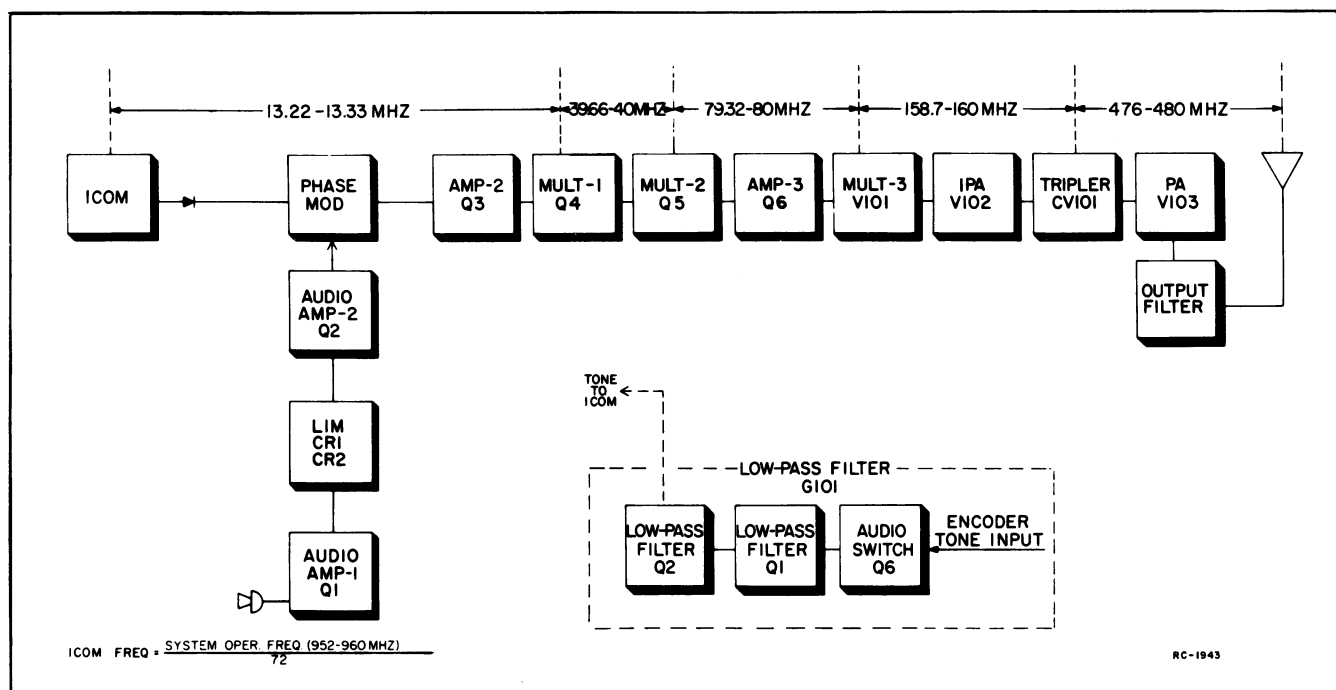


Figure 1 - Transmitter Block Diagram

- Pin 14: +10 volts for Channel Guard option
- Pin 15: -20 volts for Exciter Board and ICOM module

ICOM MODULE

ICOM module Model 4EG25A12 consists of a crystal-controlled Colpitts oscillator, a voltage regulator, a Channel Guard tone modulator and a buffer output stage. The entire module (including crystal) is enclosed in a dust-proof aluminum can, with the ICOM frequency and the transmitter operating frequency printed on the top. Access to the oscillator trimmer is obtained by prying off the plastic GE decal on the top of the can.

The oscillator frequency is temperature-compensated at both ends of the temperature range to provide instant frequency compensation, with a frequency stability of $\pm 0.0002\%$.

A keying jumper from H1 to H2 (on the exciter board) connects the ICOM to ground. This drops the -20 volts exciter supply through voltage dividers R19 and R20 to provide -10 volts to operate the ICOM. With the ICOM operating, diode CR3 is forward biased and the oscillator output is applied to the modulator stage.

In Channel Guard applications, tone from the low-pass filter board is applied to the ICOM through Channel Guard Mod adjust R1002. The oscillator output is frequency modulated by the Channel Guard tone.

CAUTION

All ICOM modules are individually compensated at the factory, and cannot be repaired in the field. Any attempt to remove the ICOM cover will void the warranty.

AUDIO AMPLIFIERS AND LIMITER

An audio signal from the microphone is coupled through C1 to the base of Class A audio amplifier Q1. The design of the microphone, in conjunction with C2 and R3, produces a 6-dB audio pre-emphasis. RF decoupling is provided by C45.

The amplified audio signal is RC coupled to the diode limiters, CR1 and CR2. These diodes operate in series and are normally in a forward conducting state. An audio signal of sufficient amplitude to cause limiting takes the diodes out of conduction, so that one diode conducts only on positive cycles and the other conducts only on negative cycles.

Following the limiter stage is a second Class A amplifier, Q2. The output of Q2 is coupled through MOD ADJUST potentiometer R12 to a combined post-limiter filter and de-emphasis network. This network consists of C4, C7, C8, C9, R13, R14, R15 and R18. The output of the filter and de-emphasis network is applied directly to the phase modulator.

PHASE MODULATOR

The phase modulator uses varactor CV1 (voltage variable capacitor) in series with tunable coil L1. This network appears as a series-resonant circuit to the RF output of the oscillator. An audio signal applied to the modulator varies the bias of CV1, resulting in a phase-modulated output. The output of the modulator is coupled through blocking capacitor C14 to the base of the second amplifier.

AMPLIFIERS AND 1ST AND 2ND MULTIPLIERS

The second amplifier (Q3) isolates the modulator from the loading effects of the first multiplier and provides amplification. The output is coupled through T6 to the first multiplier.

Following Q3 are two inductively-coupled Class C, common-emitter multiplier stages (Q4 and Q5). Q4 is a tripler, with collector tank T1 tuned to three times the crystal frequency. Metering resistors R31 and R42 are for metering the MULT-1 stage at centralized metering jack J102.

Q5 operates as a doubler stage, with collector tank T3 tuned to six times the crystal frequency. Resistors R33 and R40 are for metering the MULT-2 stage at J102. The output of Q5 is inductively coupled through T3 and T4 to amplifier Q6.

Third amplifier Q6 is a neutralized straight-through amplifier. Feedback through C35 from the output link on T5 provides neutralization. This stage is metered at J102-3 across R37. The output is coupled to the grid tank of multiplier V101.

3RD MULTIPLIER

The output of the transistorized Exciter is coupled by a short length of RF cable to the grid tank (Z102) of beam pentode V101. This stage operates as a doubler with the plate tank tuned to twelve times the crystal frequency.

Bias voltage (approximately -18 volts) is supplied to the grid of V101 through R108 to protect the tube against loss of drive. Grid voltage is metered by metering network R105 and R106 with a residual reading of approximately 0.18 volts without any drive,

caused by fixed bias voltage to the grid of V101. The plate tank is tuned by C104 with plate voltage supplied through L101.

IPA AND TRIPLER

The output of the MULT-3 stage is coupled by a pi-network consisting of C104, L103 and C107 to the grid of the IPA, a compactron beam power amplifier.

Approximately 45 volts of bias voltage is supplied to the grid of V102 through R112 and a tap on L103 to protect the stage against loww of drive. A residual reading of 0.28 volt without any drive to the stage indicates the presence of fixed bias. Grid voltage and the tripler varactor bias voltage are metered simultaneously at J201-5.

The IPA plate tank is tuned by C115, and plate voltage is supplied through L105. The stage is neutralized by C110.

RF from the IPA is coupled through C119 to a passive tripler stage. The tripler consists of three tuned stages (C115 & L108, C121 & L111, and C122 & L113) which are coupled together through the common impedance of varactor CV101.

The IPA output is fed to the tripler, where the first tuned stage resonates at the fundamental frequency. The second tuned circuit (an "idler" circuit) is tuned to twice the input signal, and mixes with the input signal to produce the desired third harmonic (or operating frequency). The third tuned circuit is tuned to the operating frequency.

POWER AMPLIFIER

Drive from the tripler stage is link-coupled to the grid circuit of V103 through L115 and L116. V103 is a coaxial element, conduction-cooled beam power tetrode operating as a neutralized Class C amplifier.

The grid line L128 of V103 is series-tuned by C130 with 20 volts of protective bias supplied through L117 and grid bias resistors R103 and R129. PA grid current is metered across resistor R103 at J102-6 and J102-4.

Neutralization is provided by a fixed series screen inductance (the fingers on the screen by-pass ring) and the screen by-pass capacitors C135, C136, C138 and C140.

The PA Plate tank circuit is comprised of C145 (the plate tank tuning flap), L120 (the copper-plated heat sink on the plate of V103), range extending plate, and mechanically constructed capacitor (with mica dielectric) C143. The plate voltage is supplied through choke L122, which is connected to feed-through capacitor C142.

The PA screen voltage is controlled by OUTPUT CONTROL potentiometer R124 which is in series with R126 in the screen supply circuit. With the OUTPUT CONTROL fully counterclockwise, the plate dissipation of V103 is reduced below the rated tube limit for tuning the power amplifier stage.

Plate current is metered from J102-1 to J102-9 across metering resistors R101 and R102.

WARNING

The meter leads are at plate potential (high B-plus when metering the PA Plate.

The output of V103 is link-coupled to band-pass filter FL102 consisting of two inductively coupled helical resonators. C2 and C4 are the output tuning capacitors. L5, C5 and C6 form an additional low-pass filter section. The RF output is fed through J103 to the Transmitter Converter Panel.

An RF sniffer circuit (CR1, C7, and R1) provides for measuring the relative power output at J102-11. When troubleshooting the transmitter, components of the low-pass filter and RF sniffer circuit can be checked by removing the plate on the bottom of the filter casing.

CHANNEL GUARD

Low Pass Filter (G101)

In encode-decode combinations, low-pass filter G101 is assembled on a printed wiring board that mounts on the underside of the MASTR transmitters. The filter is supplied by a regulated +10 volts and a regulated -20 volts. The +10 volts is applied continuously (even in the STANDBY position), and the -20 volts is applied only when the transmitter is keyed.

Keying the transmitter applies the encoder tone (from the receiver) to low-pass filter G101. Transistors Q1 and Q2 form a two-section, active low-pass filter that reduces tone distortion and power supply ripple. Q6 operates as a tone switch, applying the tone input to the filter whenever +10 volts is applied to J1 (Q6 base). Thermistor RT1 keeps the output constant over wide variations in temperature. The filter output is coupled to the tone modulator on the transmitter exciter board through Channel Guard MOD ADJUST R34. Instructions for setting R34 are contained in the Transmitter Alignment Procedure.

The channel can be monitored before transmitting a message by moving the CG-OFF switch on the Control Unit to the OFF position, or by removing the microphone or handset from the operational hang-up bracket.

Encoder Model 4EH17A10 (Optional)

In encode only combinations, or when different encode and decode frequencies are required, optional encoder Model 4EH17A10 mounts on the underside of the MASTR transmitter. The encoder is supplied by a regulated +10 volts and a regulated -20 volts. The +10 volts is applied to Q3, Q4 and Q5 continuously (even in the STAND-BY position). The -20 volts is applied to Q1 and Q2 only when the transmitter is keyed.

The encoder tone is provided by selective oscillators Q3 and Q4, which oscillate continuously at a frequency determined by the tone network (FL1). Negative feedback, applied through the tone network to the base of Q3, prevents any gain in the stage except at the desired encode frequency.

Thermistor-resistor combination R14 and RT2 provides temperature compensation for the oscillator output. Limiter diodes CR1 and CR2 keep the tone amplitude constant.

Keying the transmitter applied -20 volts to the two-stage, active low-pass filter (Q1 and Q2) turning them on. The oscillator output is then coupled through emitter-follower Q5 to the low-pass filter. Thermistor RT1 keeps the filter output constant over wide variations in temperatures.

The output of the filter is applied to the tone modulator on the transmitter exciter board through Channel Guard MOD ADJUST R34. Instructions for setting R34 are contained in the Modulation Adjustment section of the Transmitter Alignment Procedure.

The channel can be monitored before transmitting a message by moving the CG-OFF switch on the Control Unit to the OFF position, or by removing the microphone or handset from the operational hang-up bracket.

MAINTENANCE

TUBE REPLACEMENT

WARNING

Before replacing tubes, remove all power from the unit so that the transmitter cannot be keyed. Turn off the main line switch and discharge filter capacitors.

To replace 3rd Multiplier and IPA Tubes (V101 & V102)

Loosen the two screws holding tube shield to heatsink, and pull off tube shield. Then carefully work the tube out of its socket.

To replace Power Amplifier V103:

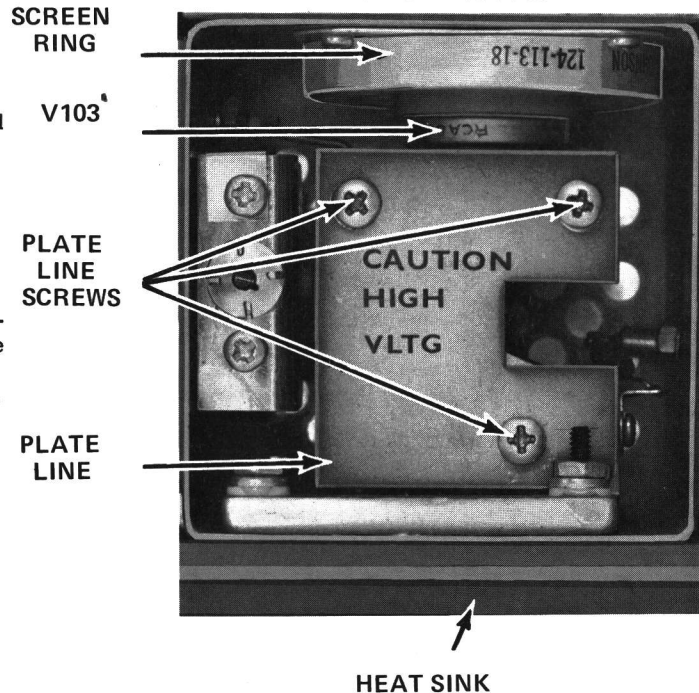


Figure 2 - PA Plate Box With Cover Removed

1. Make sure that all power is removed from the unit.
2. Remove the top cover on the AMPL PLATE box (fig. 2). Allow the transmitter to cool if necessary.
3. Remove the three Phillips-head screws in the plate line, starting with the two screws nearest tube socket. Lift off the top and center sections of the plate line. Next, slide the bottom section toward the AMPL PLATE tuning adjustment and lift it out of the AMPL PLATE box.
4. Carefully work the tube out of its socket.
5. Use a screwdriver to bend the screen ring contacts out toward the center of the tube socket so that all contacts will touch the base of the tube.

CAUTION

Extreme care should be taken during PA tube replacement to avoid damaging the screen ring contacts.

6. Replace the tube by hand, making sure that it is fully seated in the socket and that all screen ring contacts are touching the tube.
7. Replace the plate lines, tightening the screw nearest the heat-sink first. Then replace the top cover of AMPL PLATE box.
8. Realign the transmitter.

TRANSMITTER ALIGNMENT

EQUIPMENT REQUIRED

- 1. General Electric Test Set Models 4EX3A10 (TM11 or TM12), 4EX8K10, Station Test Meter Panel, or a 20,000 ohms-per-volt Multimeter with a 1-volt scale.
- 2. Wattmeter (similar to Bird Thruline Model 43) connected to J103 and terminated in a 50-ohm, 30-watt load.

PRELIMINARY CHECKS AND ADJUSTMENTS

- 1. Place ICOM in socket KY1. Do not adjust ICOM trimmer.
- 2. Turn OUTPUT CONTROL (R124) fully counterclockwise. This limits PA dissipation during initial tune-up.
- 3. Connect Test Set to the Transmitter Centralized Metering Jack J102. If using Multimeter, connect the positive lead to J102-16 (Ground), except where indicated.
- 4. For a large change in frequency or a badly misaligned transmitter, set the slugs in the Exciter coils at the bottom of the coil form, and the slug of Z102 (MULT-3 GRID) at the top of the coil form. Tune AMPL PLATE counterclockwise until the stud is even with the top of the case. Then turn C121, C122 and OUTPUT TUNING -1 and -2 fully counterclockwise.
- 5. All adjustments are made with the transmitter keyed.

NOTE

This transmitter is designed for 60-watt PA plate power input applications. Be sure that the power transformer taps on the station power supply are set for limited 60-watt input as shown in the Maintenance Manual for Power Supply Model 4EP38A10.

METERING POSITION				TYPICAL	PROCEDURE
Step	4EX3A10	Multimeter - at J102	TUNING CONTROL	METER READING	
EXCITER BOARD					
1.	A	Pin 10	T6 and L1/L2	0.55 v (0.4 v Minimum)	Tuning the modulator is a critical adjustment. Carefully tune T6 and L1 alternately for maximum meter reading. If no peak is obtained when tuning T6, set the slug in L1 to a different position and re-tune T6.
2.	A (MULT-1)	Pin 10	T1	See Procedure	Tune T1 for a small dip in meter reading (not required unless changing frequency).
3.	B (MULT-2)	Pin 2	T2, T1 and T3	0.65 v (0.5 v Minimum)	Tune T2 and then T1 for a maximum meter reading. Then tune T3 for minimum meter reading (not required unless changing frequency).
4.	C (AMPL-3)	Pin 3	T4, T3 and T5	0.6 v (0.5 v Minimum)	Tune T4 and then T3 for a maximum meter reading. Then tune T5 for minimum meter reading (not required unless changing frequency).
MULT-3, IPA AND POWER AMPLIFIER					
5.	D (MULT-3)	Pin 4	MULT-3 GRID (Z102)	0.6 v (0.5 v Minimum)	Tune MULT-3 GRID for maximum meter reading.
6.	C (AMPL-3)	Pin 3	T4	Maximum	Retune T4 for maximum meter reading.
7.	D (MULT-3)	Pin 4	MULT-3 GRID (Z102)	Maximum	Retune MULT-3 GRID for maximum meter reading.
8.	E (MULT-4)	Pin 5	IPA GRID C104 & C115	Maximum	Tune IPA GRID for maximum meter reading. Then tune C115 for maximum meter reading (not required unless changing frequency.)
9.	E (MULT-4)	Pin 5	C121 & C122	See Procedure	Tune C121 clockwise until meter reading drops abruptly. Then turn C122 clockwise for a change in meter reading. This step is not required unless changing frequency.
10.	F PA GRID	Pin 14 (+) Pin 6 (-)	AMPL GRID (C130) & C115, C121 & C122	See Procedure	Tune AMPL GRID for maximum meter reading. Then retune C115, C121, C122, and AMPL GRID in that order until no further increase in meter reading is noted.
11.	G PA PLATE	WARNING High B+ on Pins 1 & 9 Pin 1 (+) Pin 9 (-) AMPL PLATE		Minimum	Tune AMPL PLATE for a dip in meter reading (not required unless changing frequency).
12.	H REL PWR OUT	Pin 11	OUTPUT TUNING -1 & -2 and AMPL PLATE	Maximum	Alternately tune OUTPUT TUNING -1 and -2 and AMPL PLATE in that order for maximum meter reading.
13.			OUTPUT CONTROL (R124)	See Procedure	Adjust OUTPUT CONTROL for a reading of 25 watts on the wattmeter.
14.					Repeat Steps 12, 13 and 10 in that order.

MODULATION LEVEL ADJUSTMENT

The MOD ADJUST (R12) was adjusted to the proper setting before shipment and should not normally require readjustment. This setting permits approximately 75% modulation for the average voice level. The audio peaks which would cause overmodulation are clipped by the modulation limiter. The limiter, in conjunction with the de-emphasis network, instantaneously limits the slope of the audio wave to the modulator, thereby preventing overmodulation while preserving intelligibility.

TEST EQUIPMENT

- 1. An audio oscillator
- 2. A frequency modulation monitor
- 3. An output meter or a VTVM
- 4. GE Test Set Models 4EX3A10 or 4EX8K10

PROCEDURE

- 1. Connect the audio oscillator and the meter across audio input terminals J5 (Green-Hi) and J6 (Black-Lo) on GE Test Set or across J1 (Mike High) and J2 (Mike Low) on the Exciter Board.
- 2. Apply a 0.75-volt signal at 1000 Hz to Test Set or across J1 and J2 on Exciter Board.
- 3. For transmitters without Channel Guard, set the MOD ADJUST (R12) for a 6.75 kilohertz swing (See Note) with the deviation polarity which gives the highest reading as indicated on the frequency modulation monitor.

NOTE

The deviation figure is applicable to the 476-480 MHz OUTPUT. Thus, the deviation will be doubled if measured in the 952-960 MHz Converter Panel Output.

- 4. For transmitters with Channel Guard, set the Channel Guard MOD ADJUST (R1002) for 0.75 kHz tone deviation. Remove the tone to the transmitter by unplugging leads to J7 and J8 on Exciter Board, or by switching to a non-Channel Guard frequency in multifrequency units. Next, apply a 0.75-volt signal at 1000 Hz and set MOD ADJUST (R12) for a 6 kHz deviation (6.75 kHz minus 0.75 kHz tone deviation).

PA POWER INPUT

For FCC Purposes, the PA power input can be determined by measuring the PA Plate voltage and the plate current indication, and using the following formula:

P_i = $\frac{\text{Plate Voltage} \times \text{Plate Current Indication}}{3.5}$

Where:

P_i is the power input in watts.

Plate voltage is measured with GE Test Set in position G, using the 1000-volt scale (or measured from J102-1 to -16 with multimeter).

Plate current indication is measured with GE Test Set in position G, using the TEST 1 scale (or measured from J102-1 to -9 with multimeter).

3.5 is the value of the plate current metering resistor in ohms.

FREQUENCY ADJUSTMENT

First, check the transmitter frequency to determine if any adjustment is required. The frequency should be checked with a frequency meter or counter having an accuracy of 0.4 part-per-million (PPM), and with the ICOM module at 80°F (±4°F) or 26.5°C (±2°C) when possible. The ICOM temperature can be determined by taping a mercury thermometer to the side of the ICOM.

CAUTION

The ICOM case is at -20 volts DC. Be careful not to short the case to ground.

If an adjustment is required, use one of the following procedures:

If the ICOM is stabilized at 80°F, pry off the GE emblem and adjust the ICOM trimmer for correct transmitter operating frequency.

If the ICOM is not stabilized at 80°F, pry off the GE emblem and check for a color dot on the top of the can. This color dot indicates which correction curve to use in setting the unit on frequency (see Figure 3). Next, tape a thermometer to the ICOM and check the temperature when the thermometer is stabilized. Then proceed as shown in the following example:

- 1. Assume that the ICOM is marked with a green color dot and the temperature reading is 50°F. At that temperature, the green curve shows a correction factor of approximately +1.5 PPM. (At 480 MHz, 1 PPM is 480 Hz.)
- 2. With a transmitter operating frequency of 480 MHz, adjust the ICOM trimmer for a reading of +720 Hz (+1.5 x 480) higher than the licensed operating frequency.
- 3. If a negative correction factor is obtained (at temperatures above 80°F), adjust the ICOM trimmer for the indicated PPM lower than the operating frequency

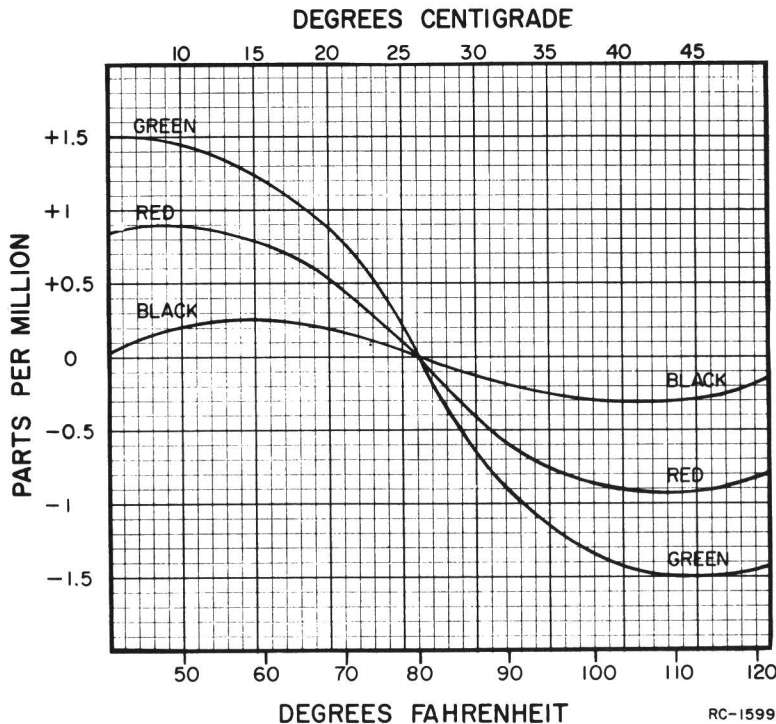
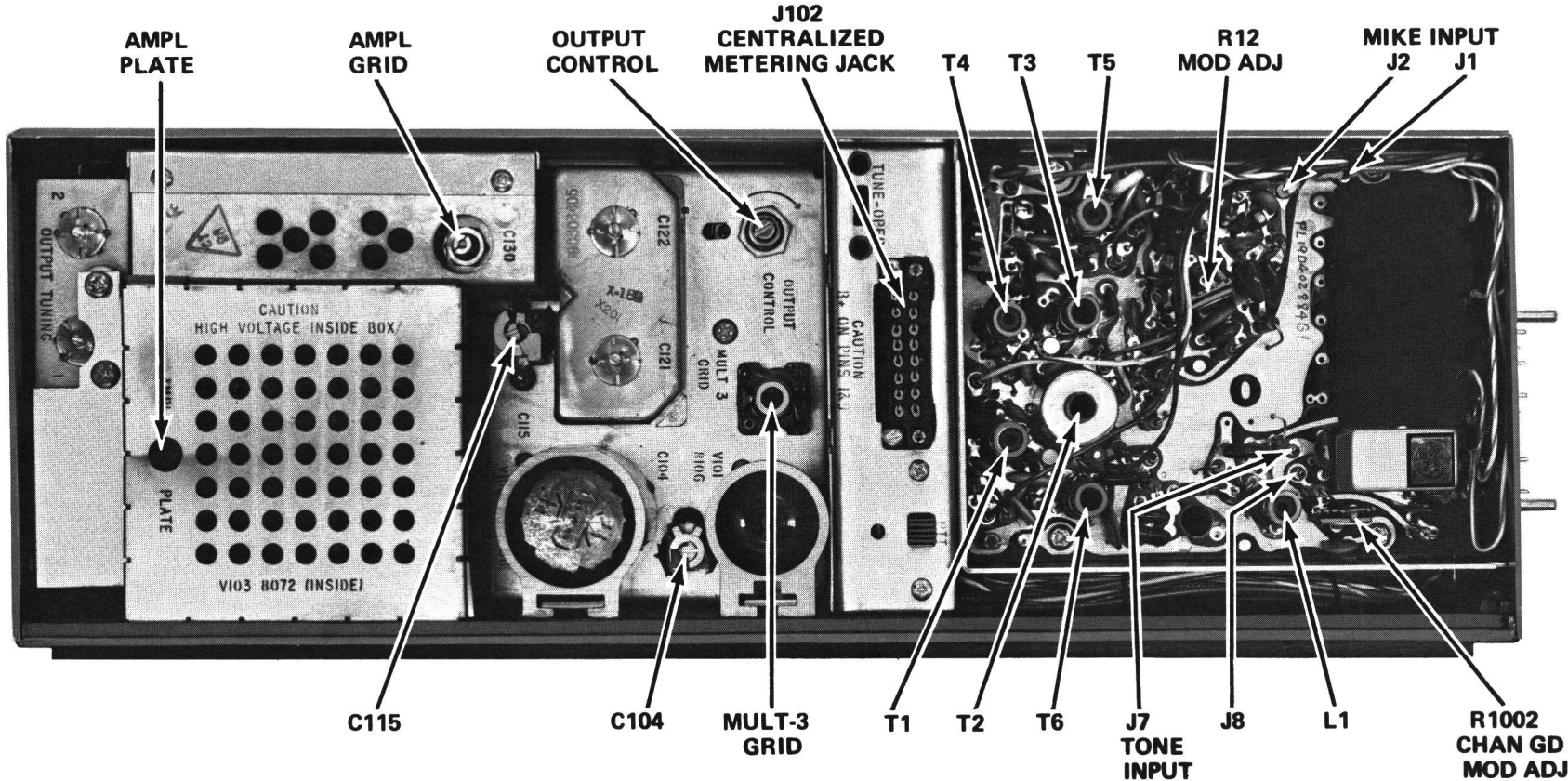


Figure 3 - ICOM Frequency Correction Curves

ALIGNMENT PROCEDURE

476—480 MHz TRANSMITTER/DRIVER
MODELS 4ET59C42 & 43

TEST PROCEDURES

These Test Procedures are designed to assist you in servicing a transmitter that is operating-- but not properly. Problems encountered could be low power output, low B plus, tone and voice deviation, defective audio sensitivity and modulator adjust control set too high. By following the sequence of test steps starting with Step 1, the

defect can be quickly localized. Once a defect is pin-pointed, refer to the "Service Check" and the additional corrective measures included in the Transmitter Troubleshooting Procedure. Before starting with the Transmitter Test Procedures, be sure the transmitter is tuned and aligned to the proper operating frequency.

TEST EQUIPMENT REQUIRED

for test hookup as shown:

1. Wattmeter similar to: 2. VTVM similar to: 3. Audio Generator similar to: 4. Deviation Meter similar to:

Bird #43
Jones #711N

Triplet #850
Heath #IM-21

GE Model 4EX6A10 or
Heath #1G-72

Measurements #140

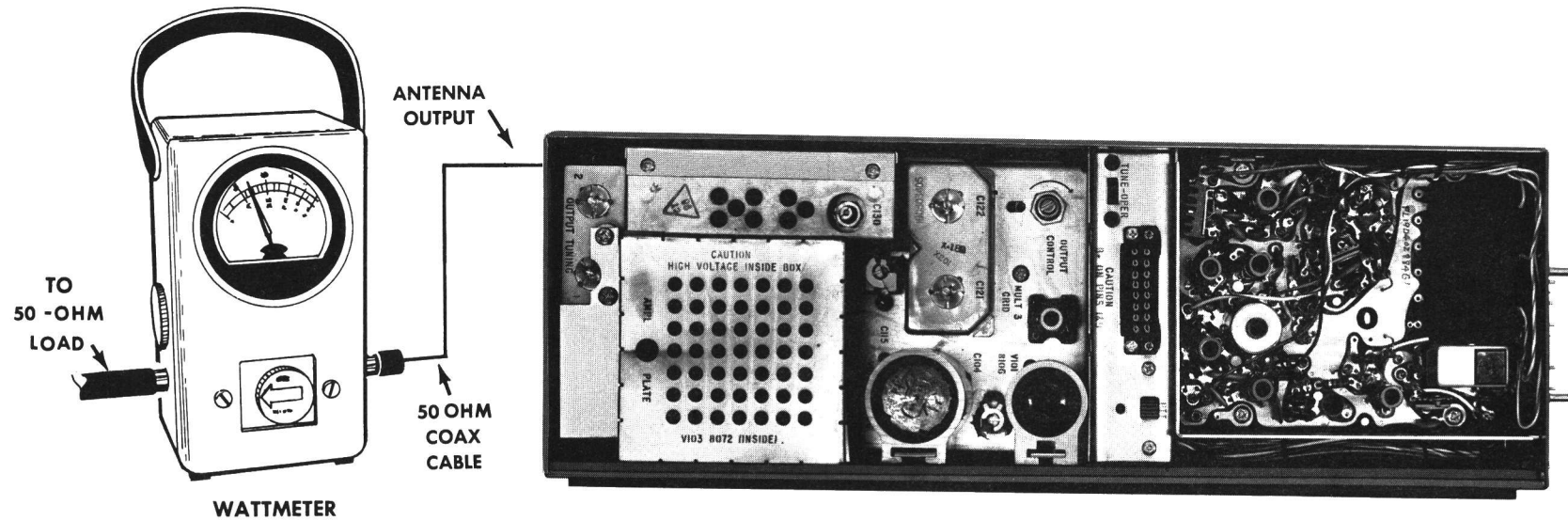
5. Multimeter similar to:

GE METERING TEST SET MODELS 4EX3A10, 4EX8K10 or
Triplet #631 or
20,000 ohms-per-volt voltmeter

STEP 1

POWER MEASUREMENT TEST PROCEDURE

1. Connect transmitter output to wattmeter as shown below, using a low-loss coaxial cable between the antenna jack and wattmeter. RG-303/U is recommended for accurate power output readings.



2. Key transmitter and check wattmeter for minimum reading of 25-Watts.

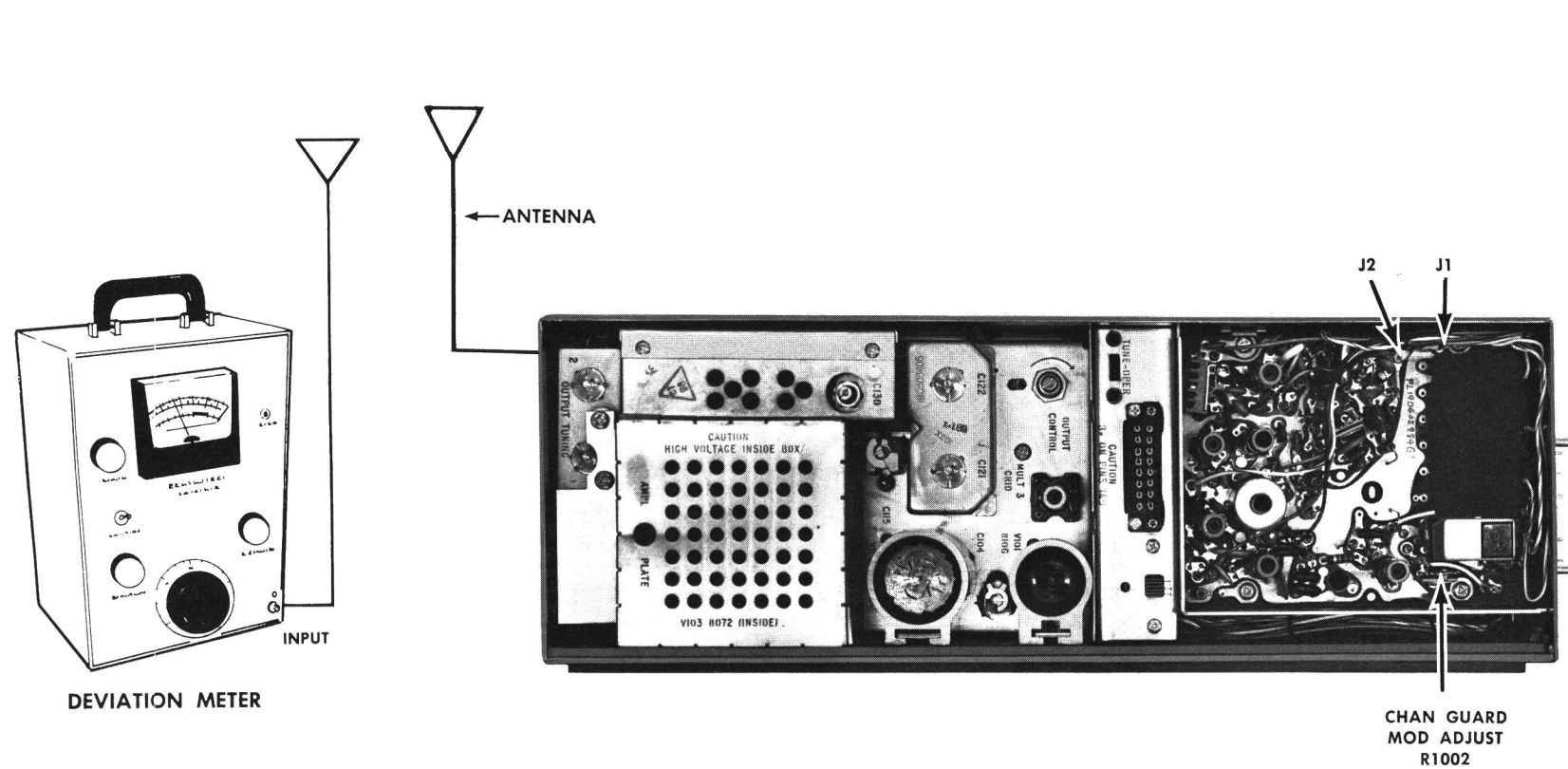
SERVICE CHECK

Refer to Service Hints on Transmitter Troubleshooting Procedure.

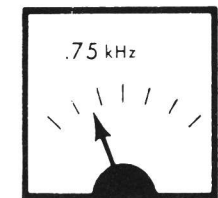
STEP 2

TONE DEVIATION WITH CHANNEL GUARD TEST PROCEDURE

1. Setup Deviation Meter and monitor output of transmitter as shown below:



2. Unplug the MIC HI terminal from J1 on Transmitter Exciter Board.
3. Key transmitter and check for 0.75 kHz deviation. If reading is low or high, adjust Channel Guard MOD ADJUST (R1002) for a reading of 0.75 kHz.



DEVIAION METER

NOTES:

1. The Channel Guard MOD ADJUST (R1002) may be adjusted for deviations up to 1 kHz.
2. The Tone Deviation Test Procedures should be repeated everytime the Tone Frequency is changed.
3. The deviation figure is applicable to the 476-480 MHz output. Thus the deviation will be doubled if measured in the 952-960 MHz Converter Panel output.

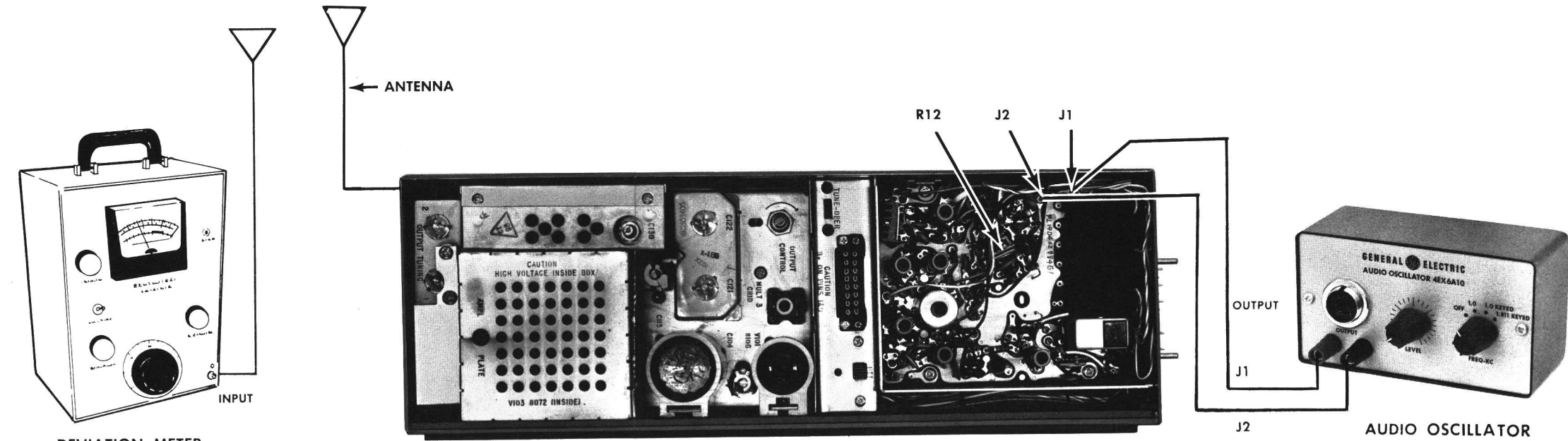
SERVICE CHECK

If the 0.75 kHz deviation is not obtainable when adjusting R1002, replace the encoder tone network.

STEP 3

VOICE DEVIATION AND SYMMETRY TEST PROCEDURE

1. Unplug the High and Low Mike leads from the Exciter Board Jacks J1 and J2.
2. Connect test equipment to transmitter as shown below:

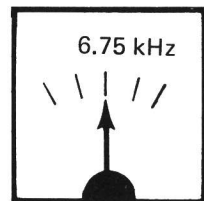


3. Set the generator output to 0.75 VOLTS RMS and frequency to 1 kHz.
4. Key the transmitter and adjust Deviation Meter to carrier frequency.
5. Deviation reading should be ± 6.75 kHz.
6. Adjust "Modulation Adjust Control" R12 until deviation reads ± 6.75 kHz on plus (+) or minus (-) made with the correct level of tone applied on Channel Guard transmitters.

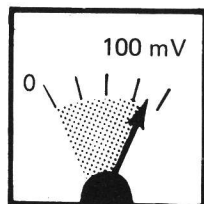
NOTES: MASTR transmitters are adjusted for ± 6.75 kHz deviation at the factory. The factory adjustment will prevent the transmitter from deviating more than 7.5 kHz under the worst conditions of frequency, voltage and temperature.

If the deviation reading plus (+) and minus(-) differs by more than 0.75 kHz check the following:

1. Recheck Step 1 as shown in the Transmitter Alignment Chart.
2. Check Audio Sensitivity by reducing generator output until deviation falls to 5 kHz.



DEVIAION METER



METER

STEP I - QUICK CHECKS

POWER OUTPUT	CHECK VOLTAGES AT CENTRALIZED METERING JACK J102 Multimeter - pin numbers GE Test Set - A-G positions							PROBABLE DEFECT
	Pins 10&16 A	Pins 2&16 B	Pins 3&16 C	Pins 4&16 D	Pins 5&16 E	Pins 6&14 F	Pins 1&9 G	
0	0	0	0	0.18 V	0.28 V	0	Low	Defective Q3, Q4 or Modulator (see Note A)
0	over 1.0 V	0	0	0.18 V	0.28 V	0	Low	Shorted Q4 or open Q3
0	Normal	0 or over 1.0 V	0	0.18 V	0.28 V	0	Low	Defective Q5
0	Normal	Normal	0 or over 1.0 V	0.18 V	0.28 V	0	Low	Defective Q6
0	Normal	Normal	Low	0.18 V	0.28 V	0	Low	Open filament on 8106, open coax, bad Q6
0	Normal	Normal	Normal	Normal	0.28 V	0	Low	Open filament on 8156
0	Normal	Normal	Normal	Normal	Normal	0	0	Open filament on 8072
0	Normal	Normal	Normal	Normal	0.5 V	0	0	If no peak at position "E" when tuning C115, bad multiplier diode or 8156
0	Normal	Normal	Normal	Normal	Normal	High	Very Low or 0	Bad R123/R126, bad R124, shorted 8072 screen
Low	Normal	Normal	Normal	Normal	Normal	Low	0.5 V	Weak 8156 or 8072
Erratic	Normal	Normal	Normal	Normal	Normal	Very High	0.5 V	Check contacts on screen by-pass ring

NOTE: Localize trouble by checking:

- 20 volt DC supply at metering jack J102 pins 12 and 16.
- Measure 5.5 volts DC across ICOM load resistor R28 (2.7K ohms), then:
 - If no voltage is measured, check keying leads by measuring the voltage drop across resistors R19, R23, R21, and R25. Voltage should read 10 volts when that channel is keyed and 0 volts when unkeyed.
 - If Step a indicates 10 volts and no voltage is measured across R28, suspect bad ICOM or socket.
 - With ICOMs removed, short Q3 base to emitter. A voltage reading above 1.0 volts at meter position A indicates Q3 and Q4 are good. If reading remains zero, check for shorted Q3 or open Q4.
 - If Step c is normal, defect is in modulator. Check voltage variable diode CV1.

STEP 2
CHECK TYPICAL DC VOLTAGES

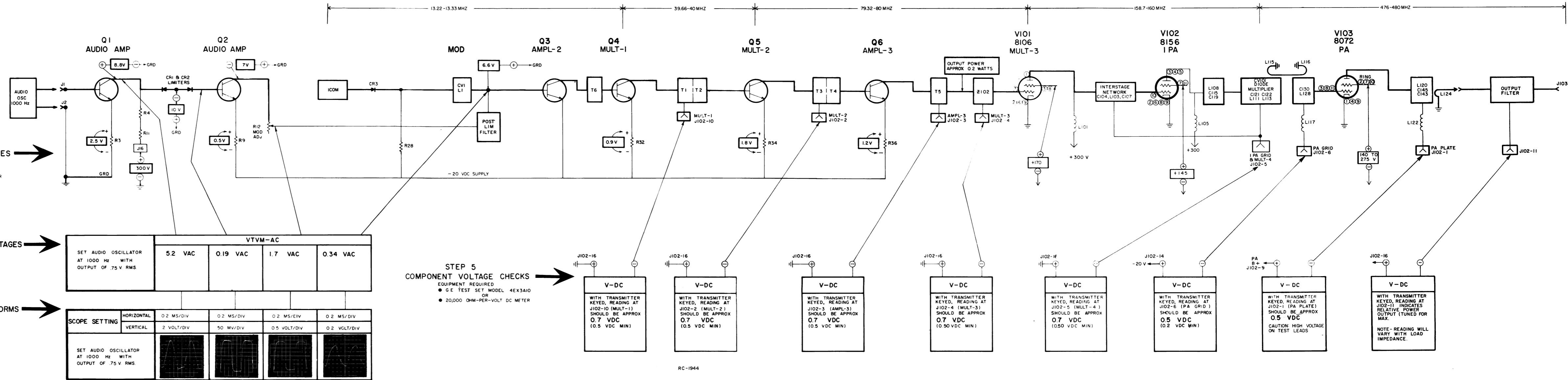
EQUIPMENT REQUIRED
● GE TEST MODEL 4EX3A10
OR
● 20,000 OHM-PER-VOLT METER

STEP 3
CHECK AUDIO AC VOLTAGES

EQUIPMENT REQUIRED
● AUDIO OSCILLATOR
● AC VTVM

STEP 4
AUDIO & OSC. WAVEFORMS

EQUIPMENT REQUIRED
● AUDIO OSCILLATOR
● OSCILLOSCOPE

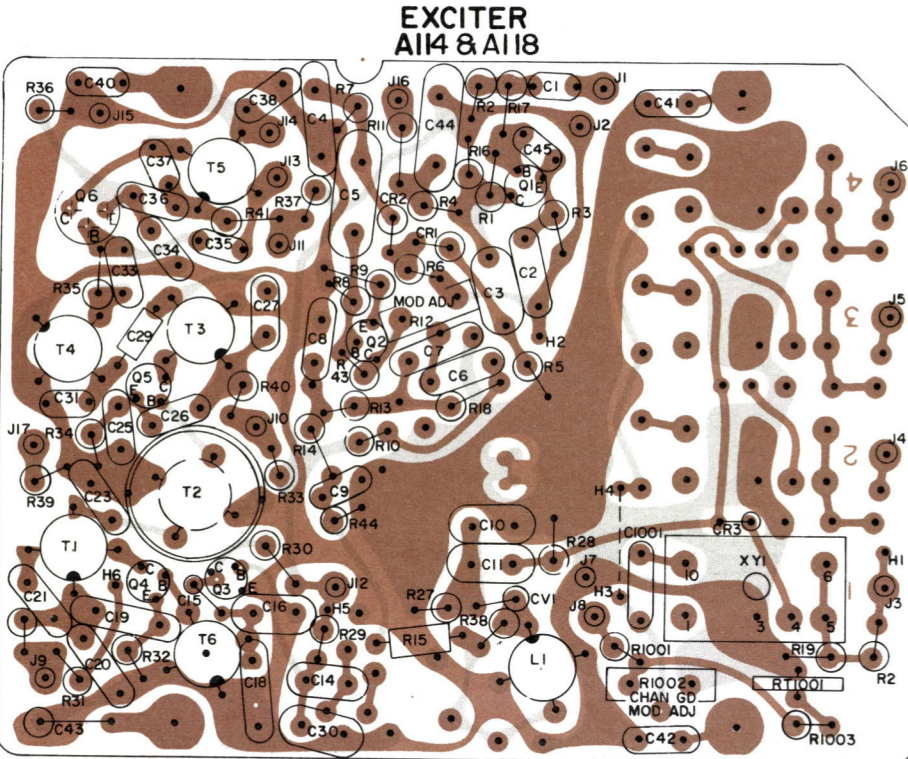


STEP 5
COMPONENT VOLTAGE CHECKS

EQUIPMENT REQUIRED
● GE TEST SET MODEL 4EX3A10
OR
● 20,000 OHM-PER-VOLT DC METER

TROUBLESHOOTING PROCEDURE

476-480 MHz TRANSMITTER/DRIVER
MODELS 4ET59C42 & 43



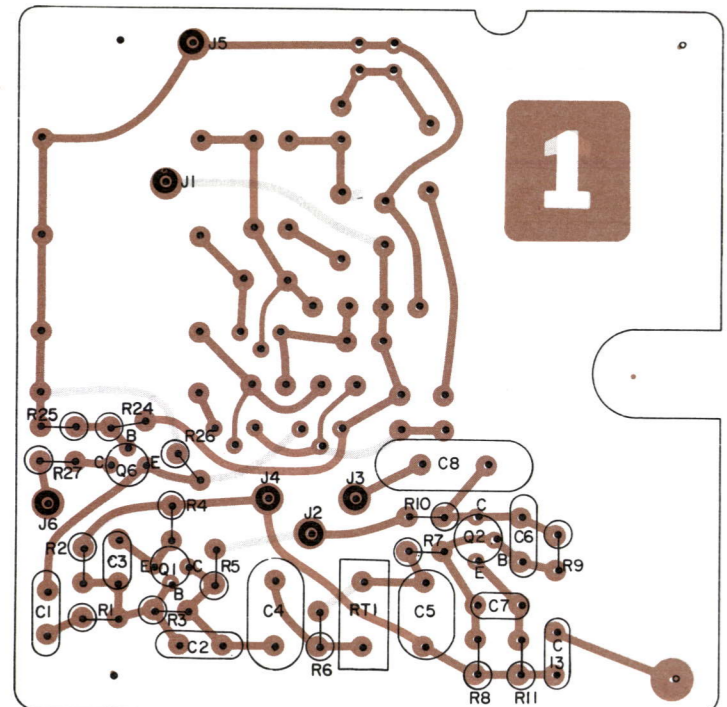
(19C311379, Sh. 1, Rev. 3)
(19C311379, Sh. 2, Rev. 3)

EXCITER READINGS TAKEN TO CHASSIS GROUND

TRANSISTOR	EMITTER		BASE		COLLECTOR	
	-	+	-	+	-	+
Q1	5.8K	5.9K	140K	11K	60K	30K
Q2	4.1K	2.8K	70K	7.5K	8.7K	9.5K
Q3	3.1K	115	62K	5.7K	3.7K	3.8K
Q4	3.5K	2.3K	3.4K	2.1K	105	105
Q5	3.5K	2.3K	3.4K	115	200	210
Q6	3.5K	2.1K	3.5K	2.2K	70	70

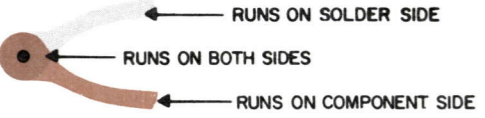
EXCITER READINGS TAKEN TO 20 VOLT LINE (J15 BLUE LEAD)

TRANSISTOR	EMITTER		BASE		COLLECTOR	
	-	+	-	+	-	+
Q1	9.5K	10K	145K	17.2K	63K	45K
Q2	450	450	68K	3.5K	11.5K	13.5K
Q3	0	0	68K	3.2K	7K	8K
Q4	13	120	0	0	2.2K	3.7K
Q5	5K	120	0	0	12	3.7K
Q6	22	25	47	45	2.2K	3.9K



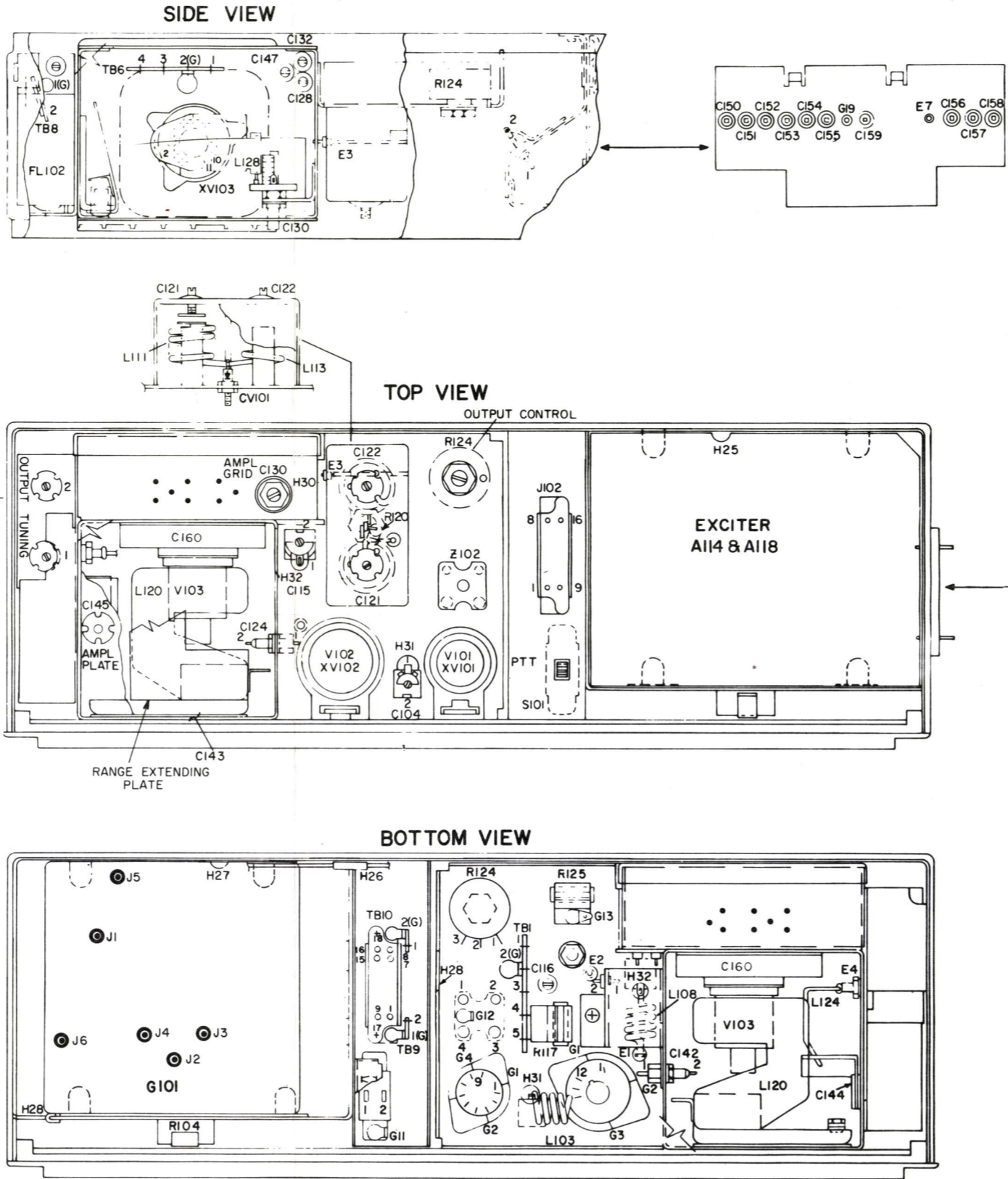
LOW-PASS FILTER
GIO1

(19C311800, Sh. 1, Rev. 1)
(19C311800, Sh. 2, Rev. 1)



OUTLINE DIAGRAM

476—480 MHz TRANSMITTER/DRIVER
MODELS 4ET59C42 & 43



(19R621353, Rev. 3)

READINGS AT J101 TAKEN TO CHASSIS GROUND

PIN	-	+
1	0	0
2	0	0
3	1K	1K
4	19K	19K
5	0	0
6	0	0
7	0	0
8	50K	50K
9	0	0
10	0	0
11	0	0
12	0	0
13	0	0
14	0	0
15	5.5K	2.5K
16	0	0
17	0	0
18	0	0
19	0	0
20	0	0

RESISTANCE READINGS

ALL READINGS ARE TYPICAL READINGS MEASURED WITH A 20,000 OHM-PER-VOLT METER AND J101 DISCONNECTED. + OR - SIGNS SHOW METER LEAD GROUNDED, OUTPUT CONTROL FULLY COUNTER-CLOCKWISE AND ALL TUBES IN THEIR SOCKETS.

FOR READINGS OF:	USE SCALE:
1-100Ω	X 1
100-1KΩ	X 10
1K-50KΩ	X 100
50K-∞Ω	X 1,000

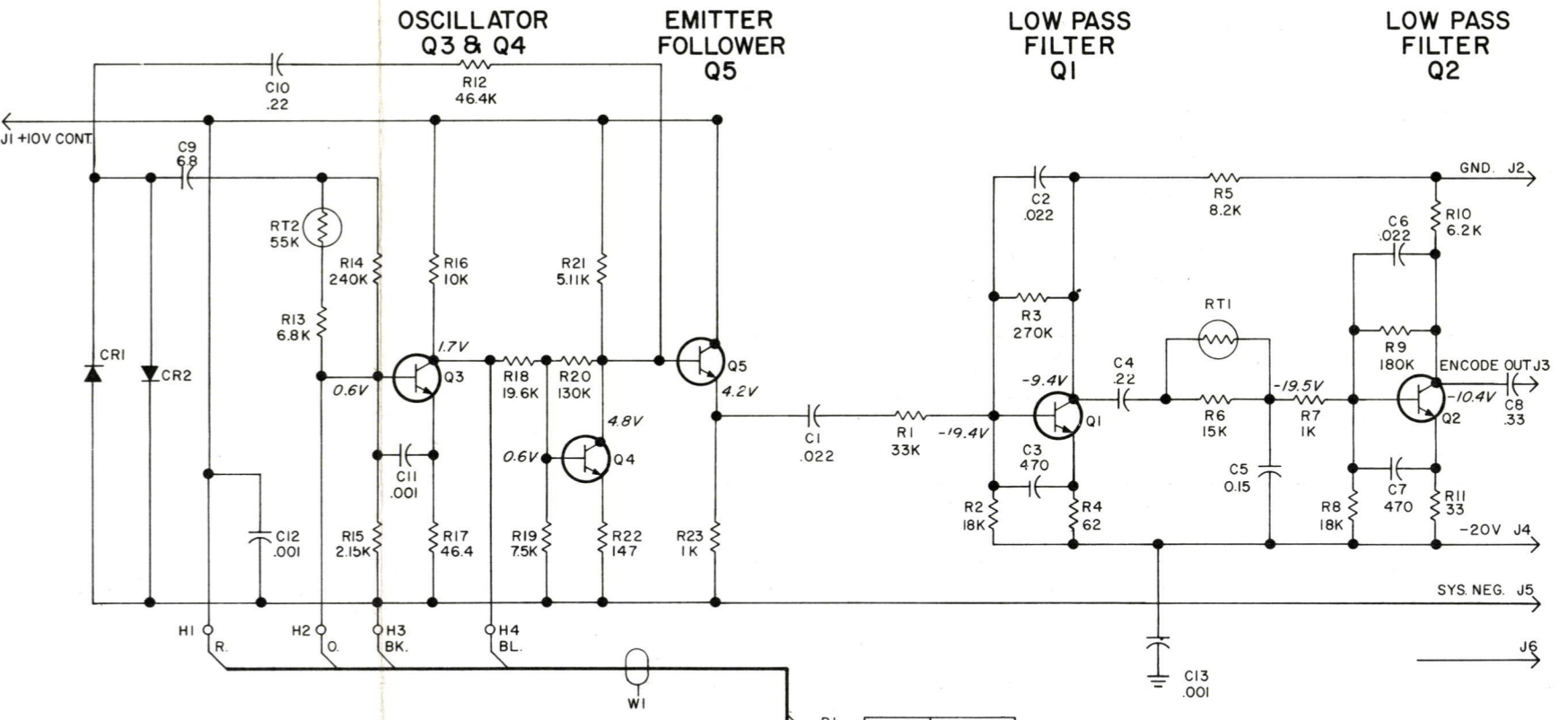
READINGS TAKEN FROM TUBE SOCKET PINS TO CHASSIS GROUND

PIN	1	2	3	4	5	6	7	8	9	10	11	12
XV101	20K	0	46K	1.2	0	0	32K	46K	0			
XV102	1	0	19K	19K	19K	0	24K	0	0	55K	24K	0
XV103	0	0	2K 6K *	0	0	1.2	12.5K	2K 6K *	0	0	2K 6K *	0

* READING DEPENDS ON METER POLARITY.

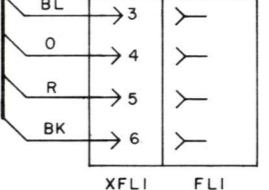
CHANNEL GUARD ENCODER MODEL 4EH17A10

SCHEMATIC DIAGRAM



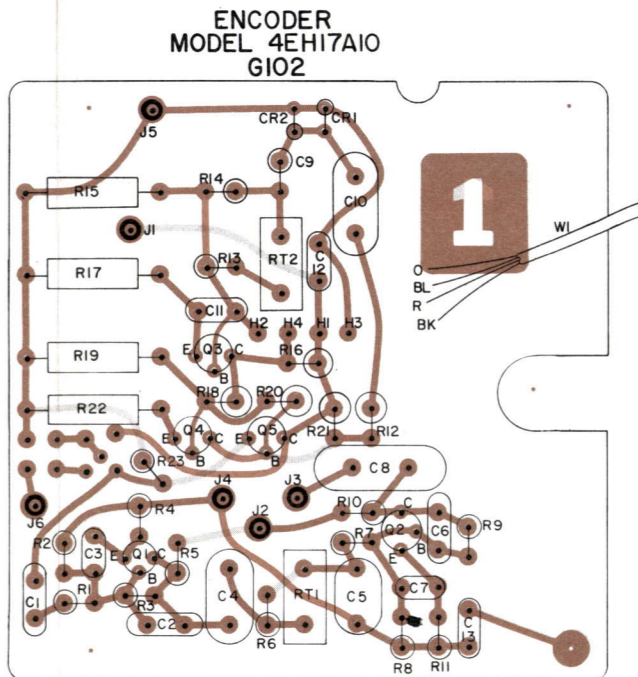
IN ORDER TO RETAIN RATED EQUIPMENT PERFORMANCE, REPLACEMENT OF ANY SERVICE PART SHOULD BE MADE ONLY WITH A COMPONENT HAVING THE SPECIFICATIONS SHOWN ON THE PARTS LIST FOR THAT PART.

(19D402941, Rev. 2)

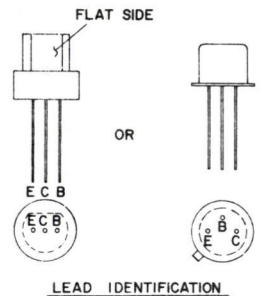


ALL RESISTORS ARE 1/2 WATT UNLESS OTHERWISE SPECIFIED AND RESISTOR VALUES IN OHMS UNLESS FOLLOWED BY K=1,000 OHMS OR M=1,000,000 OHMS. CAPACITOR VALUES IN PICOFARADS (EQUAL TO MICROMICROFARADS) UNLESS FOLLOWED BY UF= MICROFARADS. INDUCTANCE VALUES IN MICROHENRYS UNLESS FOLLOWED BY MH= MILLIHENRYS OR H=HENRYS.

OUTLINE DIAGRAM

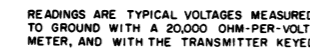


(19C311861, Rev. 3)
(19C311860, Sh. 1, Rev. 1)
(19C311800, Sh. 2, Rev. 1)



REVISION LTR BLOCK

REV	REV
Δ	Δ



■ USED WITH CHANNEL GUARD UNITS ONLY

MODEL NO	FREQ RANGE (IN MHZ)	NO OF FREQ	CHAN GD
4ET59C42	476-480MHZ	1	
4ET59C43	476-480MHZ	1	X

MC = MHz
KC = KHz
CPS = Hz

NOTES:

1. XMTR MODF KIT 19A127610GI ADDS A PLATE ON TOP OF L120 TO EXTEND THE TUNING RANGE TO 480 MHZ.
2. ALL 22R WIRES ARE A4036780P3.
3. BEND TERMINAL BACK DOWN AGAINST SOCKET SADDLE, AND PRESS IT TIGHTLY AGAINST SADDLE WHILE SOLDERING.
4. PART OF CABLE 19B205480G2.
5. ALL WIRES N22 EXCEPT AS OTHERWISE SHOWN.

476—480 MHz TRANSMITTER MODELS 4ET59C42 & 43

PARTS LIST		
LBI-4086B		
476-480 MHz TRANSMITTERS (WITH ICOM) MODELS 4BT58C12 AND C43		
SYMBOL	GE PART NO.	DESCRIPTION
A114 and A118		EXCITER BOARD A114 19D402884G2 A118 19D402884G6
----- CAPACITORS -----		
C1	19A116080P3	Polyester: .022 μ f \pm 20%, 50 VDCW.
C2	19A116080P4	Polyester: .033 μ f \pm 20%, 50 VDCW.
C3	19A116080P7	Polyester: 0.1 μ f \pm 20%, 50 VDCW.
C4	7491395P114	Ceramic disc: 2200 pf \pm 10%, 500 VDCW; sim to RMC Type J1.
C5	19A116080P7	Polyester: 0.1 μ f \pm 20%, 50 VDCW.
C6	19A116080P5	Polyester: .047 μ f \pm 20%, 50 VDCW.
C7	7491395P111	Ceramic disc: 1500 pf \pm 10%, 500 VDCW; sim to RMC Type J1.
C8 and C9	7491395P109	Ceramic disc: 1000 pf \pm 10%, 500 VDCW; sim to RMC Type J1.
C10	5496219P359	Ceramic disc: 68 pf \pm 5%, 500 VDCW, temp coef -150 PPM.
C11	5493366P100J	Mica: 100 pf \pm 5%, 100 VDCW; sim to Electro Motive Type DM-15.
C14	593366P180K	Mica: 180 pf \pm 10%, 100 VDCW; sim to Electro Motive Type DM-15.
C15	5491601P24	Phenolic: 1.8 pf \pm 10%, 500 VDCW.
C16	5493366P100J	Mica: 100 pf \pm 5%, 100 VDCW; sim to Electro Motive Type DM-15.
C18	5496219P561	Ceramic disc: 82 pf \pm 5%, 500 VDCW, temp coef -330 PPM.
C19	5494481P129	Ceramic disc: 3900 pf \pm 20%, 1000 VDCW; sim to RMC Type JF Discap.
C20	5494481P128	Ceramic disc: 2700 pf \pm 10%, 1000 VDCW; sim to RMC Type JF Discap.
C21	5496219P253	Ceramic disc: 39 pf \pm 5%, 500 VDCW, temp coef -80 PPM.
C23	5496219P253	Ceramic disc: 39 pf \pm 5%, 500 VDCW, temp coef -80 PPM.
C25 and C26	5494481P111	Ceramic disc: 1000 pf \pm 20%, 1000 VDCW; sim to RMC Type JF Discap.
C27	5496219P440	Ceramic disc: 9.0 pf \pm 5%, 500 VDCW, temp coef -220 PPM.
C29	5491601P35	Phenolic: 0.15 pf \pm 10%, 500 VDCW.
C30	5493366P30K	Mica: 330 pf \pm 10%, 100 VDCW; sim to Electro Motive Type DM-15.
C31	5496219P241	Ceramic disc: 10 pf \pm 5%, 500 VDCW, temp coef -80 PPM.
C33	5496219P51	Ceramic disc: 33 pf \pm 5%, 500 VDCW, temp coef 0 PPM.
C34	5494481P111	Ceramic disc: 1000 pf \pm 20%, 1000 VDCW; sim to RMC Type JF Discap.
C35	5496219P35	Ceramic disc: 4.0 pf \pm 5%, 500 VDCW, temp coef 0 PPM.
C36	5494481P111	Ceramic disc: 1000 pf \pm 20%, 1000 VDCW; sim to RMC Type JF Discap.
C37	5496219P247	Ceramic disc: 22 pf \pm 5%, 500 VDCW, temp coef -80 PPM.
C38	5494481P111	Ceramic disc: 1000 pf \pm 20%, 1000 VDCW; sim to RMC Type JF Discap.
C40 thru C42	5494481P111	Ceramic disc: 1000 pf \pm 20%, 1000 VDCW; sim to RMC Type JF Discap.

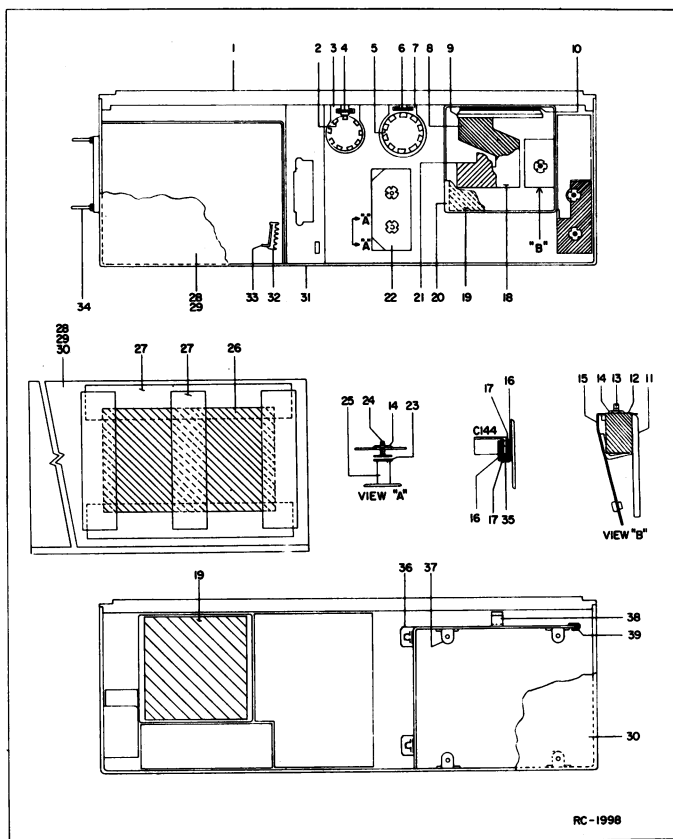
SYMBOL	GE PART NO.	DESCRIPTION
C43	5496267P18	Tantalum: 6.8 μ f \pm 20%, 35 VDCW; sim to Sprague Type 150D.
C44	19A118414P13	Polyester: 0.1 μ f \pm 20%, 200 VDCW.
C45	5494481P107	Ceramic disc: 470 pf \pm 20%, 1000 VDCW; sim to RMC Type JF Discap.
----- DIODES AND RECTIFIERS -----		
CR1 and CR2	19A115331P1	Silicon.
CR3	19A115250P1	Silicon.
CV1	5495799P8	Silicon, capacitive.
----- JACKS AND RECEPTACLES -----		
J1 thru J17	4033513P4	Contact, electrical; sim to Bead Chain L93-3.
----- INDUCTORS -----		
L1	19B204528G2	Coil. Includes tuning slug 5491798P2.
----- TRANSISTORS -----		
Q1 and Q2	19A115123P1	Silicon, NPN; sim to Type 2N2712.
Q3	19A115330P1	Silicon, NPN.
Q4 and Q5	19A115328P1	Silicon, NPN.
Q6	19A115328P1	Silicon, NPN.
----- RESISTORS -----		
R1	3R77P334K	Composition: 0.33 megohm \pm 10%, 1/2 w.
R2	3R77P105K	Composition: 1 megohm \pm 10%, 1/2 w.
R3	3R77P562K	Composition: 5600 ohms \pm 10%, 1/2 w.
R4	3R77P224K	Composition: 0.22 megohm \pm 10%, 1/2 w.
R5	3R77P334K	Composition: 0.33 megohm \pm 10%, 1/2 w.
R6	3R77P684K	Composition: 0.68 megohm \pm 10%, 1/2 w.
R7	3R77P334K	Composition: 0.33 megohm \pm 10%, 1/2 w.
R8	3R77P823K	Composition: 82,000 ohms \pm 10%, 1/2 w.
R9	3R77P511J	Composition: 510 ohms \pm 5%, 1/2 w.
R10	3R77P753J	Composition: 75,000 ohms \pm 5%, 1/2 w.
R11	3R77P274K	Composition: 0.27 megohm \pm 10%, 1/2 w.
R12	19B209358P106	Variable, carbon film: approx 75 to 10,000 ohms \pm 10%, 0.25 w; sim to CTS Type X-201.
R13	3R77P473K	Composition: 47,000 ohms \pm 10%, 1/2 w.
R14	3R77P563K	Composition: 56,000 ohms \pm 10%, 1/2 w.
R15 and R16	3R77P683K	Composition: 68,000 ohms \pm 10%, 1/2 w.
R17	3R77P222K	Composition: 2200 ohms \pm 10%, 1/2 w.
R18	3R77P433J	Composition: 43,000 ohms \pm 5%, 1/2 w.
R19	3R77P332J	Composition: 3300 ohms \pm 5%, 1/2 w.
R20	3R77P162J	Composition: 1600 ohms \pm 5%, 1/2 w.
R27	3R77P103K	Composition: 10,000 ohms \pm 10%, 1/2 w.
R28	3R77P272K	Composition: 2700 ohms \pm 10%, 1/2 w.
R29	3R77P683K	Composition: 68,000 ohms \pm 10%, 1/2 w.
R30	3R77P392K	Composition: 3900 ohms \pm 10%, 1/2 w.
R31	3R77P750J	Composition: 75 ohms \pm 5%, 1/2 w.
R32	3R77P121J	Composition: 120 ohms \pm 5%, 1/2 w.
R33	3R77P620J	Composition: 62 ohms \pm 5%, 1/2 w.
R34	3R77P121J	Composition: 120 ohms \pm 5%, 1/2 w.
R35	3R77P470K	Composition: 47 ohms \pm 10%, 1/2 w.

SYMBOL	GE PART NO.	DESCRIPTION
R36	3R77P270K	Composition: 27 ohms \pm 10%, 1/2 w.
R37	3R77P200J	Composition: 20 ohms \pm 5%, 1/2 w.
R38	3R77P363J	Composition: 36,000 ohms \pm 5%, 1/2 w.
R39	19A116278P474	Metal film: 0.576 megohm \pm 2%, 1/2 w.
R40	3R77P151K	Composition: 150 ohms \pm 10%, 1/2 w.
R41	3R77P470K	Composition: 47 ohms \pm 10%, 1/2 w.
R42	3R77P101K	Composition: 100 ohms \pm 10%, 1/2 w.
R43	3R77P364J	Composition: 0.36 megohm \pm 5%, 1/2 w.
R44	3R77P184K	Composition: 0.18 megohm \pm 10%, 1/2 w.
----- TRANSFORMERS -----		
T1	19B204534G1	Coil. Includes tuning slug 5491798P4.
T2	19B204531G2	Coil. Includes tuning slug 5491798P4.
T3	19B204535G1	Coil. Includes tuning slug 5491798P4.
T4	19B204535G2	Coil. Includes tuning slug 5491798P4.
T5	19B204537G1	Coil. Includes tuning slug 5491798P4.
T6	19B216035G1	Coil. Includes tuning slug 5491798P4.
----- SOCKETS -----		
XY1	19B216043G1	Socket: 6 contacts.
OSCILLATORS		
When reordering, specify ICOM Frequency. ICOM Frequency = operating frequency \div 72.		
Y1	4KG25A12 19D413070P1	Integrated Circuit Oscillator Module (ICOM). Cap, decorative.
CHANNEL GUARD MODIFICATION KIT 19A127078G1 (Used with A118)		
----- CAPACITORS -----		
C1001	19B209243P7	Polyester: 0.1 μ f \pm 20%, 50 VDCW.
----- RESISTORS -----		
R1001	3R77P242J	Composition: 2400 ohms \pm 5%, 1/2 w.
R1002	19B209358P107	Variable, carbon film: approx 75 to 25,000 ohms \pm 10%, 0.25 w; sim to CTS Type X-201.
R1003	3R77P512J	Composition: 5100 ohms \pm 5%, 1/2 w.
RT1001	19C300048P8	Disc: 2500 ohms \pm 10%; sim to GE 4D403.
CHASSIS AND PA ASSEMBLY 19E50085G2		
----- CAPACITORS -----		
C101	5494481P12	Ceramic disc: .001 pf \pm 10%, 1000 VDCW; sim to RMC Type JF Discap.
C104	5491271P6	Variable: approx 2.1-12.7 pf, 750 v peak; sim to EF Johnson 189.
C105	5494481P12	Ceramic disc: .001 pf \pm 10%, 1000 VDCW; sim to RMC Type JF Discap.
C106	19B209204P1	Composition: 220 pf \pm 10%, 500 VDCW, temp coef -4700 PPM.
C107	7489162P7	Silver mica: 12 pf \pm 5%, 500 VDCW; sim to Electro Motive Type DM-15.
C109	7489162P27	Silver mica: 100 pf \pm 5%, 500 VDCW; sim to Electro Motive Type DM-15.
C110	7489162P31	Silver mica: 150 pf \pm 5%, 500 VDCW; sim to Electro Motive Type DM-15.
C111	19B209204P1	Ceramic disc: 220 pf \pm 10%, 500 VDCW, temp coef -4700 PPM.

SYMBOL	GE PART NO.	DESCRIPTION
C113	5493392P7	Ceramic, feed-thru: 1000 pf \pm 100% -0%, 500 VDCW; sim to Allen-Bradley Type FASC.
C115	19B209372P1	Variable: approx 2.3 to 24.3 pf; sim to EF Johnson Type V 193-0008-010.
C116	5493392P7	Ceramic, feed-thru: 1000 pf \pm 100% -0%, 500 VDCW; sim to Allen-Bradley Type FASC.
C119*	7489162P7	Silver mica: 12 pf \pm 5%, 500 VDCW; sim to Electro Motive Type DM-15.
	7489162P6	In REV B and earlier: Silver mica: 10 pf \pm 0.5 pf, 500 VDCW; sim to Electro Motive Type DM-15.
C121 and C122		Refer to Mechanical Parts (RC-1998), items 14, 22-25.
C126	7489162P1	Silver mica: 5 pf \pm 0.5 pf, 500 VDCW; sim to Electro Motive Type DM-15.
C127	5494481P12	Ceramic disc: 1000 pf \pm 10%, 1000 VDCW; sim to RMC Type JF Discap.
C128	5493392P7	Ceramic, feed-thru: 1000 pf \pm 100% -0%, 500 VDCW; sim to Allen-Bradley Type FASC.
C130	5490272P17	Variable: 2 to 7.83 pf, 1250 v peak; sim to Johnson Type M.
C132	5493392P7	Ceramic, feed-thru: 1000 pf \pm 100% -0%, 500 VDCW; sim to Allen-Bradley Type FASC.
C135*	19B209369P1	Mica: 2500 pf \pm 20%, 400 VDCW; sim to EF Johnson 124-113-18. Deleted by REV B.
C136	7489162P27	Silver mica: 100 pf \pm 5%, 500 VDCW; sim to Electro Motive Type DM-15.
C138	7489162P27	Silver mica: 100 pf \pm 5%, 500 VDCW; sim to Electro Motive Type DM-15.
C140	7489162P27	Silver mica: 100 pf \pm 5%, 500 VDCW; sim to Electro Motive Type DM-15.
C142	7485975P17	Ceramic, feed-thru: 470 pf \pm 20%, 750 VDCW; sim to Erie Style 327.
C143	3R77P620J	Refer to Mechanical Parts (RC-1998), items 9, 10.
C144		Refer to Mechanical Parts (RC-1998), items 16, 17, and 35.
C145		Refer to Mechanical Parts (RC-1998), item 11 thru 15.
C147	5493392P7	Ceramic, feed-thru: 1000 pf \pm 100% -0%, 500 VDCW; sim to Allen-Bradley Type FASC.
C148 and C149	5494481P12	Ceramic disc: 1000 pf \pm 10%, 1000 VDCW; sim to RMC Type JF Discap.
C150 thru C156	5493392P7	Ceramic, feed-thru: 1000 pf \pm 100% -0%, 500 VDCW; sim to Allen-Bradley Type FASC.
C157	19B209282P1	Ceramic, feed-thru: 680 pf \pm 20%, 1000 VDCW; sim to Sprague Type 544C.
C158 and C159	5493392P7	Ceramic, feed-thru: 1000 pf \pm 100% -0%, 500 VDCW; sim to Allen-Bradley Type FASC.
C160*	19B209369P2	Mica: 2500 pf \pm 20%, 300 VDCW; sim to EF Johnson 124-113-18. Added by REV B.
----- DIODES AND RECTIFIERS -----		
C101	4037822P1	Silicon.
CV101	19A115809P1	Silicon, capacitive.
----- TERMINALS -----		
E1	19B200535P3	Feed-thru: sim to Sealectro ST-1500SL-C3.
E2	4029309P1	Feed-thru: sim to Sealectro FT-SM-27.
E3	4036032P5	Feed-thru: sim to Sealectro FT-SM-10.
E7	4034512P2	Feed-thru: sim to Sealectro FT-SM-22-TUR.
----- FILTERS -----		
BANDPASS FILTER		
NOTE: The bandpass filters are factory tuned. If a filter component (except as shown below) is found to be defective, it is recommended that the entire filter assembly be replaced to maintain rated power output and spurious attenuation.		
FL102	19C303559G2	450-470 MHz.

SYMBOL	GE PART NO.	DESCRIPTION
G101		LOW PASS FILTER 19C311802G1
----- CAPACITORS -----		
C1	19A116080P103	Polyester: 0.022 μ f \pm 20%, 50 VDCW.
C2	19A116080P3	Polyester: 0.022 μ f \pm 20%, 50 VDCW.
C3	5494481P107	Ceramic disc: 470 pf \pm 20%, 1000 VDCW; sim to RMC Type JF Discap.
C4	19A116080P9	Polyester: 0.22 μ f \pm 20%, 50 VDCW.
C5	19A116080P8	Polyester: 0.15 μ f \pm 20%, 50 VDCW.
C6	19A116080P3	Polyester: .022 μ f \pm 20%, 50 VDCW.
C7	5494481P107	Ceramic disc: 470 pf \pm 20%, 1000 VDCW; sim to RMC Type JF Discap.
C8	19B209243P14	Polyester: 0.33 μ f \pm 20%, 250 VDCW.
C13	5494481P111	Ceramic disc: .001 pf \pm 10%, 1000 VDCW; sim to RMC Type JF Discap.
J1 thru J6	4033513P4	Contact, electrical; sim to Bead Chain L93-3.
Q1 and Q2	19A115123P1	Silicon, NPN; sim to Type 2N2712.
Q6	19A115123P1	Silicon, NPN; sim to Type 2N2712.
----- RESISTORS -----		
R1	3R77P333K	Composition: 33,000 ohms \pm 10%, 1/2 w.
R2	3R77P183K	Composition: 18,000 ohms \pm 10%, 1/2 w.
R3	3R77P274K	Composition: 0.27 megohm \pm 10%, 1/2 w.
R4	3R77P620J	Composition: 62 ohms \pm 5%, 1/2 w.
R5	3R77P622K	Composition: 8200 ohms \pm 10%, 1/2 w.
R6	3R77P153K	Composition: 15,000 ohms \pm 10%, 1/2 w.
R7	3R77P102K	Composition: 1000 ohms \pm 10%, 1/2 w.
R8	3R77P183K	Composition: 18,000 ohms \pm 10%, 1/2 w.
R9	3R77P184K	Composition: 0.18 megohm \pm 10%, 1/2 w.
R10	3R77P622J	Composition: 6200 ohms \pm 5%, 1/2 w.
R11	3R77P330K	Composition: 33 ohms \pm 10%, 1/2 w.
R24	3R77P103K	Composition: 10,000 ohms \pm 10%, 1/2 w.
R25	3R77P473K	Composition: 47,000 ohms \pm 10%, 1/2 w.
R17	3R77P103K	Composition: 10,000 ohms \pm 10%, 1/2 w.
R18	3R78P473K	Composition: 47,000 ohms \pm 10%, 1/2 w.
R120	3R77P473K	Composition: 47,000 ohms \pm 10%, 1/2 w.
R123	3R77P152K	Composition: 1500 ohms \pm 10%, 1/2 w.
R124	19B209381P1	Variable, composition: 10,000 ohms \pm 20%, 3 w; sim to Allen-Bradley Type K.
----- JACKS AND RECEPTACLES -----		
J101	19C303426G1	Connector: 20 pin contacts.
J102	19B205689G1	Connector: 18 electrical contacts.
----- INDUCTORS -----		
L101	7488079P35	Choke, RF: 2.2 μ h \pm 10%, 0.5 ohm DC res max; sim to Jeffers 4412-9K.
L103	19A122524G1	Coil.
L105	7488079P33	Choke, RF: 1 μ h \pm 10%, 0.15 ohm DC res max; sim to Jeffers 4412-5K.
L108	19B205615P1	Coil.
L111	19B205614P5	Coil.
L113	19B205614P3	Coil.
L115		Not replaceable.

SYMBOL	GE PART NO.	DESCRIPTION
L116	4036032P5	Terminal, feed-thru: sim to Sealectro FT-SM-10.
L117	7772834P7	Choke, RF: 0.2 μ h \pm 10%, .034 ohm \pm 15% DC res, 320 to 520 MHz freq range; sim to Ohmite Z-460.
L120		Refer to Mechanical Parts (RC-1998), items 8 and 18.
L122	7772834P7	Choke, RF: 0.2 μ h \pm 10%, .034 ohm \pm 15% DC res, 320 to 520 MHz freq range; sim to Ohmite Z-460.
L124	19A121390P1	Coil.
L125 and L126	19B205616P1	Coil.
L128	19B204658P1	Grid line.
----- PLUGS -----		
P101	4029840P2	Contact, electrical: sim to AMP 42827-2.
P102	4029840P1	Contact, electrical: sim to AMP 41854.
P103 thru P108	4029840P2	Contact, electrical: sim to AMP 42827-2.
P109 thru P113	4029840P2	Contact, electrical: sim to AMP 42827-2.
P114	4029840P1	Contact, electrical: sim to AMP 41854.
P115 thru P117	4029840P2	Contact, electrical: sim to AMP 42827-2.
----- RESISTORS -----		
R101	19A115416P1	Precision, wirewound



PRODUCTION CHANGES

Changes in the equipment to improve performance or to simplify circuits are identified by a "Revision Letter", which is stamped on the unit includes all previous revisions. Refer to the Parts List for description of parts affected by these revisions.

Chassis & PA assembly 19E500865G2

REV. A - To improve assembly. Changed items 8, 9 & 18 of mechanical Parts List.

REV. B - To increase grid drive. Replaced C135 with C160.

REV. C - To increase grid drive. Changed C119.

PARTS LIST

LB1-3936C

CHANNEL GUARD ENCODER G102
4EH17A10 19C311802-G2

SYMBOL	G-E PART NO.	DESCRIPTION
----- CAPACITORS -----		
C1*	19B209243-P103	Polyester: 0.022 μ f \pm 10%, 50 VDCW. Earlier than REV A.
	19B209243-P2	Polyester: 0.015 μ f \pm 20%, 50 VDCW.
C2	19B209243-P3	Polyester: 0.022 μ f \pm 20%, 50 VDCW.
C3	5494481-P107	Ceramic disc: 470 pf \pm 20%, 1000 VDCW; sim to RMC Type JF Discap.
C4	19B209243-P9	Polyester: 0.22 μ f \pm 20%, 50 VDCW.
C5	19B209243-P8	Polyester: 0.15 μ f \pm 20%, 50 VDCW.
C6	19B209243-P3	Polyester: 0.022 μ f \pm 20%, 50 VDCW.
C7	5494481-P107	Ceramic disc: 470 pf \pm 20%, 1000 VDCW; sim to RMC Type JF Discap.
C8	19B209243-P14	Polyester: 0.33 μ f \pm 20%, 250 VDCW.
C9	5496267-P1	Tantalum: 6.8 μ f \pm 20%, 6 VDCW; sim to Sprague Type 150D.
C10	19B209243-P117	Polyester: 0.22 μ f \pm 10%, 50 VDCW.
C11 thru C13	5494481-P111	Ceramic disc: .001 μ f \pm 20%, 1000 VDCW; sim to RMC Type JF Discap.
----- DIODES AND RECTIFIERS -----		
CR1 and CR2	19A115250-P1	Silicon.
----- TONE NETWORKS -----		
FL1		TONE FREQUENCY NETWORK 19B205280
	19B205280-G1	71.9 Hz
	19B205280-G2	77.0 Hz
	19B205280-G3	82.5 Hz
	19B205280-G4	88.5 Hz
	19B205280-G5	94.8 Hz
	19B205280-G6	100.0 Hz
	19B205280-G7	103.5 Hz
	19B205280-G8	107.2 Hz
	19B205280-G9	110.9 Hz
	19B205280-G10	114.8 Hz
	19B205280-G11	118.8 Hz
	19B205280-G12	123.0 Hz
	19B205280-G13	127.3 Hz
	19B205280-G14	131.8 Hz
	19B205280-G15	136.5 Hz
	19B205280-G16	141.3 Hz
	19B205280-G17	146.2 Hz
	19B205280-G18	151.4 Hz
	19B205280-G19	156.7 Hz
	19B205280-G20	162.2 Hz
	19B205280-G21	167.9 Hz
	19B205280-G22	173.8 Hz
	19B205280-G23	179.9 Hz
	19B205280-G24	186.2 Hz
	19B205280-G25	192.8 Hz
	19B205280-G26	203.5 Hz
----- JACKS AND RECEPTACLES -----		
J1 thru J6	4033513-P4	Contact, electrical; sim to Bead Chain L93-3.
----- TRANSISTORS -----		
Q1 and Q2	19A115123-P1	Silicon, NPN; sim to Type 2N2712.
Q3 thru Q5	19A115362-P1	Silicon, NPN; sim to Type 2N2925.
----- RESISTORS -----		
R1	3R77-P333K	Composition: 33,000 ohms \pm 10%, 1/2 w.
R2	3R77-P183K	Composition: 18,000 ohms \pm 10%, 1/2 w.
R3	3R77-P274K	Composition: 0.27 megohms \pm 10%, 1/2 w.

SYMBOL	G-E PART NO	DESCRIPTION
R4	3R77-P620J	Composition: 62 ohms \pm 5%, 1/2 w.
R5	3R77-P822K	Composition: 8200 ohms \pm 10%, 1/2 w.
R6	3R77-P153K	Composition: 15,000 ohms \pm 10%, 1/2 w.
R7	3R77-P102K	Composition: 1000 ohms \pm 10%, 1/2 w.
R8	3R77-P183K	Composition: 18,000 ohms \pm 10%, 1/2 w.
R9	3R77-P184K	Composition: 0.18 megohms \pm 10%, 1/2 w.
R10	3R77-P622J	Composition: 6200 ohms \pm 5%, 1/2 w.
R11	3R77-P330K	Composition: 33 ohms \pm 10%, 1/2 w.
R12	5495948-P365	Deposited carbon: 46,400 ohms \pm 1%, 1/2 w; sim to Texas Instrument CD1/2MR.
R13	3R77-P682J	Composition: 6800 ohms \pm 5%, 1/2 w.
R14	3R77-P244J	Composition: 0.24 megohms \pm 5%, 1/2 w.
R15	5495948-P233	Deposited carbon: 2150 ohms \pm 1%, 1/2 w; sim to Texas Instrument CD1/2MR.
R16	5495948-P301	Deposited carbon: 10,000 ohms \pm 1%, 1/2 w; sim to Texas Instrument CD1/2MR.
R17	5495948-P65	Deposited carbon: 46.4 ohms \pm 1%, 1/2 w; sim to Texas Instrument CD1/2MR.
R18	5495948-P329	Deposited carbon: 19,600 ohms \pm 1%, 1/2 w; sim to Texas Instrument CD1/2MR.
R19	5495948-P285	Deposited carbon: 7500 ohms \pm 1%, 1/2 w; sim to Texas Instrument CD1/2MR.
R20	5495948-P412	Deposited carbon: 130,000 ohms \pm 1%, 1/2 w; sim to Texas Instrument CD1/2MR.
R21	5495948-P269	Deposited carbon: 5110 ohms \pm 1%, 1/2 w; sim to Texas Instrument CD1/2MR.
R22	5495948-P117	Deposited carbon: 147 ohms \pm 1%, 1/2 w; sim to Texas Instrument CD1/2MR.
R23	3R77-P102K	Composition: 1000 ohms \pm 10%, 1/2 w.
----- THERMISTORS -----		
RT1	5490828-P30	Thermistor: 330,000 ohms \pm 10%, color code black and gray; sim to Globar Type 783H-3.
RT2	5490828-P36	Thermistor: 55,000 ohms \pm 10%, color code black and red; sim to Globar Type 723B.
----- CABLES -----		
W1		(Part of XF1).
----- SOCKETS -----		
XF1	19A121920-G3	Reed, mica-filled phen: 7 pins rated at 1 amp at 500 VRMS with 4-1/4 inches of cable.
ENCODER INSTALLATION KIT 19A127174-G1		
----- MISCELLANEOUS -----		
	N404P13C13	Lockwasher, no. 6.
	N80P13005C13	Machine screw, no. 6-32 x 5/16.
	19B201074-P304	Tap screw, no. 6-32 x 1/4.
	N210P13C13	Nut, no. 6-32.
	19B205480-G2	Harness. Includes:
P130 thru P135	4029840-P2	Contact, electrical; sim to Amp 42827-2.

*COMPONENTS ADDED, DELETED OR CHANGED BY PRODUCTION CHANGES.

ORDERING SERVICE PARTS

Each component appearing on the schematic diagram is identified by a symbol number, to simplify locating it in the parts list. Each component is listed by symbol number, followed by its description and GE Part Number.

Service parts may be obtained from Authorized GE Communication Equipment Service Stations or through any GE Radio Communication Equipment Sales Office. When ordering a part, be sure to give:

1. GE Part Number for component
2. Description of part
3. Model number of equipment
4. Revision letter stamped on unit

These instructions do not purport to cover all details or variations in equipment nor to provide for every possible contingency to be met in connection with installation, operation or maintenance.

Should further information be desired, or should particular problems arise which are not covered sufficiently for the purchaser's purposes, contact the nearest Radio Communication Equipment Sales Office of the General Electric Company.

MAINTENANCE MANUAL

LBI-4084

DF-3136

MOBILE RADIO DEPARTMENT
GENERAL ELECTRIC COMPANY • LYNCHBURG, VIRGINIA 24502



PRINTED IN U.S.A.