

# **INSTALLATION INSTRUCTIONS FOR SUPERVISORY CONTROL KITS 19A122687G10 & G35**

(For MASTR Radio Control Consoles)

## CONTENTS

INSTALLATION .....	1
GENERAL INFORMATION FOR SWITCH REPLACEMENT .....	RC-2170
SERVICE SHEET .....	RC-2176

Supervisory control kit 19A122687G10 (Option 5130) contains a switch with necessary wires and terminals to add supervisory control to a single station Radio Control Console.

Supervisory control kit 19A122687G35 (Option 5131) contains two switches with necessary wires and terminals to add supervisory control to a dual station Radio Control Console.

The supervisory control pushbutton switch lights when the switch is pushed to provide supervisory control over all transmissions from other consoles. This permits an operator to terminate unauthorized or unwanted transmissions. The switch places a short across the control pair, thus, no transmission can be initiated when the switch is lighted.

## **INSTALLATION**

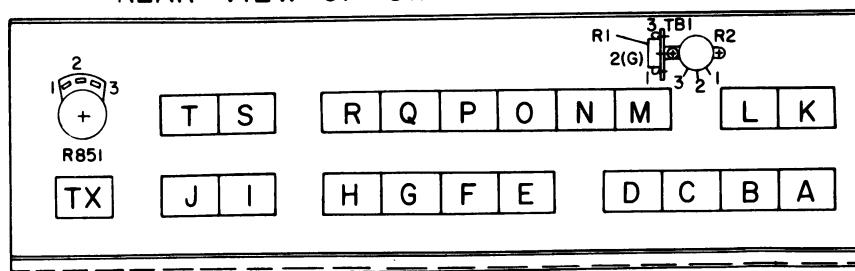
(See Figure 1 and General Information Sheet for location of components)

Supervisory control kit 19A122687G10 (single station)

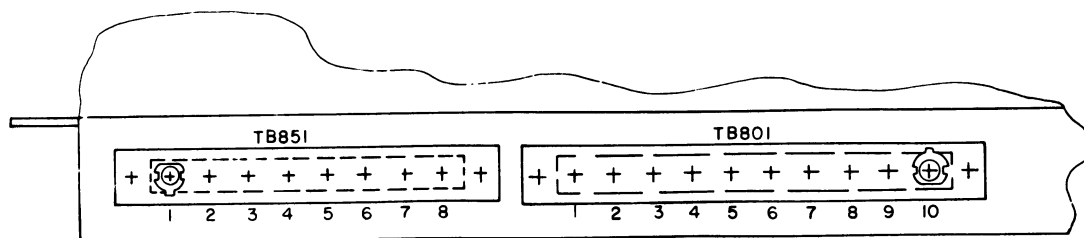
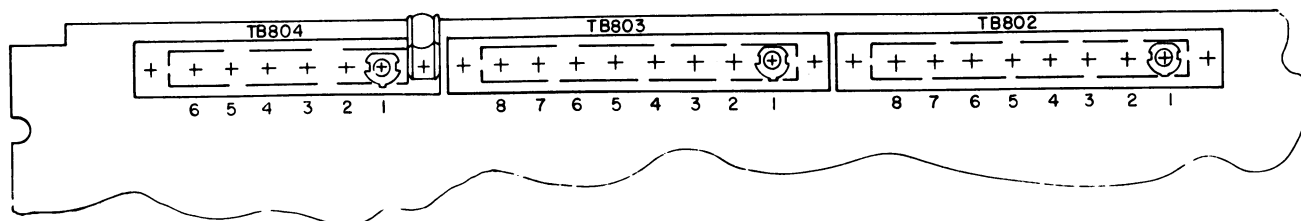


1. Remove the dummy switch from position "G" on front panel ..... ☐
2. Install the 19C311259G2 switch supplied with the kit in the place of the dummy switch removed in Step 1 ..... ☐
3. Connect the orange wire from the switch to TB801-5. Cut the wire to length and add the terminal ..... ☐
4. Clip off the blue wire at the switch terminal ..... ☐
5. Connect the red wire from the switch to TB801-6. Cut the wire to length and add the terminal on the end ..... ☐
6. Connect the white wire from the switch to TB803-4. Cut the wire to length and add the terminal on the end ..... ☐
7. Connect the black wire from the switch to TB803-8. Cut the wire to length and add the terminal on the end. IF 3 connectors are already on TB803-8, solder the black wire to the terminal underneath ..... ☐

## REAR VIEW OF SWITCH PANEL



## TOP VIEW OF CHASSIS



## REAR VIEW OF CHASSIS

RC-2164

Figure 1 - Component Location

## Supervisory control kit 19A122687G35 (Dual Station)

1. Remove the dummy switches from positions "C" (Station 1) and "G" (Station 2) for single frequency transmitter or remove the dummy switches from position "D" (Station 1) and "H" (Station 2) for two frequency transmitter ..... ☐
2. Install the 19C311259G2 switches supplied with the kit in the place of the dummy switches removed in Step 1 ..... ☐

FOR STATION 1 (Position "C" or "D")

3. Connect the orange wire from the switch to TB801-5.  
Cut the wire to length and add the terminal on the  
end ..... ☐
4. Clip off the blue wire at the switch terminal ..... ☐
5. Connect the red wire from the switch to TB801-6.  
Cut the wire to length and add the terminal  
at the end ..... ☐
6. Connect the White wire from the switch to TB803-4.  
Cut the wire to length and add the terminal on  
the end ..... ☐
7. Connect the Black wire from the switch to TB803-8.  
Cut the wire to length and add the terminal on the  
end. If 3 connectors are already on TB803-8, solder  
the black wire to the terminal underneath ..... ☐

FOR STATION 2 (Position "G" or "H")

8. Connect the orange wire from the switch to TB851-5.  
Cut the wire to length and add the terminal on the  
end ..... ☐
9. Clip-off the blue wire at the switch terminal ..... ☐
10. Connect the red wire from the switch to TB851-6.  
Cut the wire to length and add the terminal on the end ..... ☐
11. Connect the white wire from the switch to TB803-4.  
Cut the wire to length and add the terminal on the end ..... ☐
12. Connect the Black wire from the switch to TB803-8.  
Cut the wire to length and add the terminal on the  
end. If 3 connectors are already on TB803-8,  
solder the black wire to the terminal underneath ..... ☐

MOBILE RADIO DEPARTMENT  
GENERAL ELECTRIC COMPANY  
LYNCHBURG, VIRGINIA 24502

# GENERAL INFORMATION FOR SWITCH REPLACEMENT ON COMMAND CONTROL CENTER

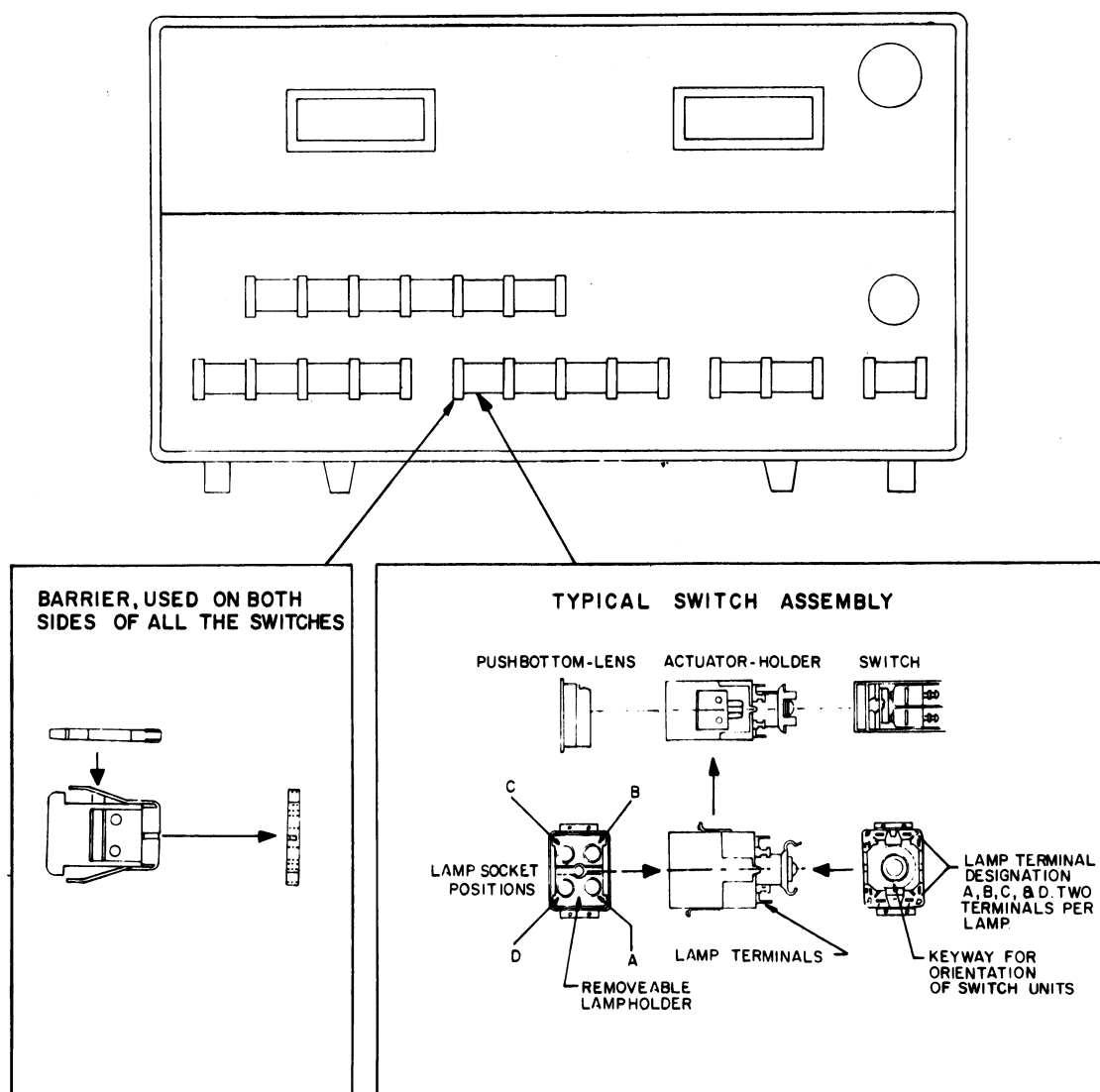
(See the drawing below)

## To Remove a Dummy Switch.

1. Remove the gray plastic insert by bending the four tabs inward one by one and pushing from the back side until the insert is popped out the Front.
2. Remove the two Barriers on either side of the dummy switch.

## To Mount a New Switch.

1. Snap the barriers on both sides of the new switch. If the switch is located in a row of switches, slide all the switches forward until the new switch can be snapped into the barriers on either side of the switch.
2. Slide the switches into place on the front panel.



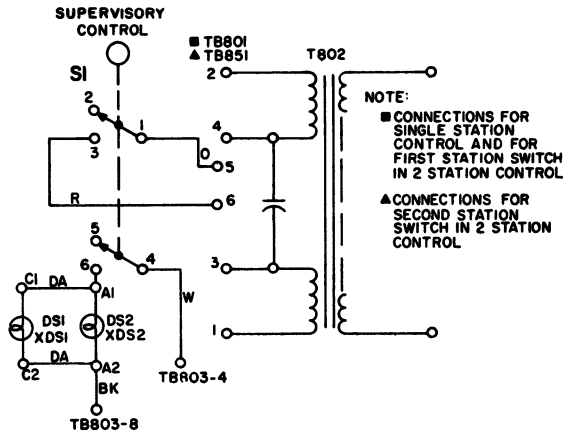
**SWITCH REPLACEMENT**

COMMAND CONTROL CENTER

RC-2170A

## SUPERVISORY CONTROL OPTION 5130 and 5131

### SCHEMATIC DIAGRAM



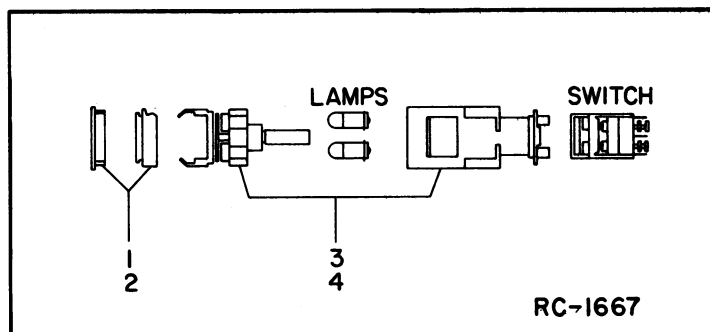
(19A122684; Rev. 0)

## PARTS LIST

**SUPERVISORY CONTROL (OPTION 5130 & 5131)**

SYMBOL	G-E PART NO.	DESCRIPTION
S1		SWITCH ASSEMBLY 19C311259-G2
DS1 and DS2	19C307037-P26	----- INDICATING DEVICES -----  Lamp, incandescent: 28 v; sim to GE 387.
	19C307029-P11	----- SWITCHES -----  Push: lighted, 2 circuits, SPDT each, alternate action, 5 amps at 250 VAC; sim to Micro Switch 2D26.
XDS1 and XDS2		----- SOCKETS -----  Part of Actuator and Holder (Refer to RC-1667).
		MECHANICAL PARTS  (SEE RC-1667)
2	19C307029-P4	Pushbutton-Lens.
4	19C307029-P16	Actuator-Holder. (Includes XDS1 and XDS2).

\*COMPONENTS ADDED, DELETED OR CHANGED BY PRODUCTION CHANGES.



## SERVICE SHEET

## SUPERVISORY CONTROL

**RC-2176**