

MASTR II[®]

MAINTENANCE MANUAL

138-174 MHz, 65-WATT TRANSMITTER-MOBILE AND STATION

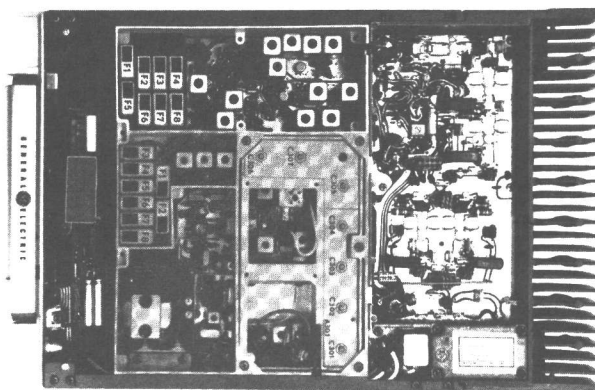


TABLE OF CONTENTS

SPECIFICATIONS	ii
DESCRIPTION AND MAINTENANCE	LBI30432 (DF3156)
EXCITER	LBI30422 (DF3165)
POWER AMPLIFIER	LBI30413 (DF3166)

138-174 MHz EXCITER 19D416859G1-4
 INTERMITTENT DUTY 65-WATT PA ASSEMBLY 19C320414G2
 CONTINUOUS DUTY 65-WATT PA ASSEMBLY 19D417524G1

SPECIFICATIONS*

Power Output	65 Watts (Adjustable from 20 to 65 Watts)
Crystal Multiplication Factor	12
Frequency Stability	
5C-ICOM with EC-ICOM	±0.0005% (-40°C to +70°C)
5C-ICOM or EC-ICOM	±0.0002% (0°C to +55°C)
2C-ICOMS	±0.0002% (-40°C to +70°C)
Spurious and Harmonic Emission	At least 85 dB below full rated power output.
Modulation	Adjustable from 0 to ±5 kHz swing with instantaneous modulation limiting.
Modulation Sensitivity	75 to 120 Millivolts
Audio Frequency Characteristics	Within +1 dB to -3 dB of a 6-dB/ octave pre-emphasis from 300 to 3000 Hz per EIA standards. Post limiter filter per FCC and EIA.
Distortion	Less than 2% (1000 Hz)
Deviation Symmetry	0.05 kHz maximum
Maximum Frequency Spread:	
138-155 MHz	Full Specifications 1.8 MHz
150.8-174 MHz	1 dB Degradation 2.75 MHz
	3.0 MHz
Duty Cycle	EIA 20% Intermittent
RF Output Impedance	50 Ohms

* These specifications are intended primarily for the use of the serviceman. Refer to the appropriate Specification Sheet for the complete specifications.

WARNING

Although the highest DC voltage applied to the MASTR II transmitter is +12 Volts DC, high current may be drawn under short circuit conditions. These currents can possibly heat metal objects such as tools, rings, watchbands, etc., enough to cause burns. Be careful when working near energized 12 Volt circuits!

High-level RF energy in the transmitter Power Amplifier assembly can cause RF burns upon contact. Keep away from these circuits when the transmitter is energized!