

INSTRUCTIONS
FOR
POWER LINE PROTECTOR KIT 19A129370
OPTION 9505

(FOR MASTR® II STATIONS)

CONTENTS

DESCRIPTION	1
WIRING AND INSTALLATION DIAGRAM	3
PARTS LIST	4

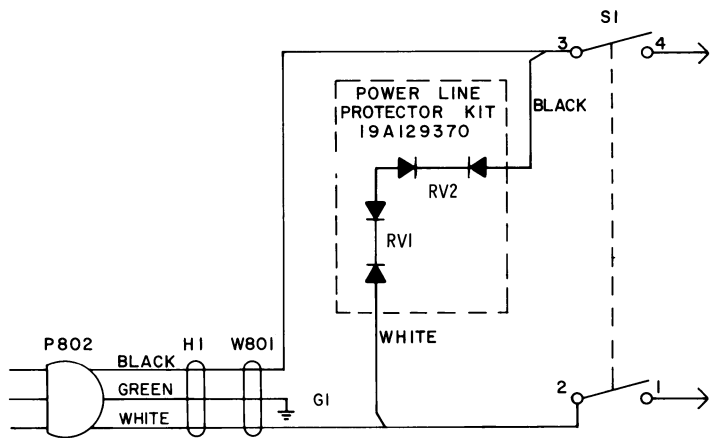
DESCRIPTION

The Power Line Protector Kit contains two selenium power line protectors that are connected in the primary power circuit. These selenium devices dissipate any voltage or current surges on the AC Power Line to protect the more costly circuit components inside the station.

NOTES

1. This kit can be used with both the 121 VAC and the 242 VAC Power Sources. The connections are the same.
2. When Power Line Protectors are used it is imperative that a good earth ground be used such as a single #14 AWG or larger copper conductor connected from the station to a metallic cold water pipe or other suitable ground. Do not use the telephone company's ground strap, use a separate strap for the ground connection. The conductor should be short, straight and a continuous piece of wire. Attention should be given to providing the lowest possible resistance at the connection at each end of the ground wire.

WIRING DIAGRAM



(RC-2654B)

FIG. 2

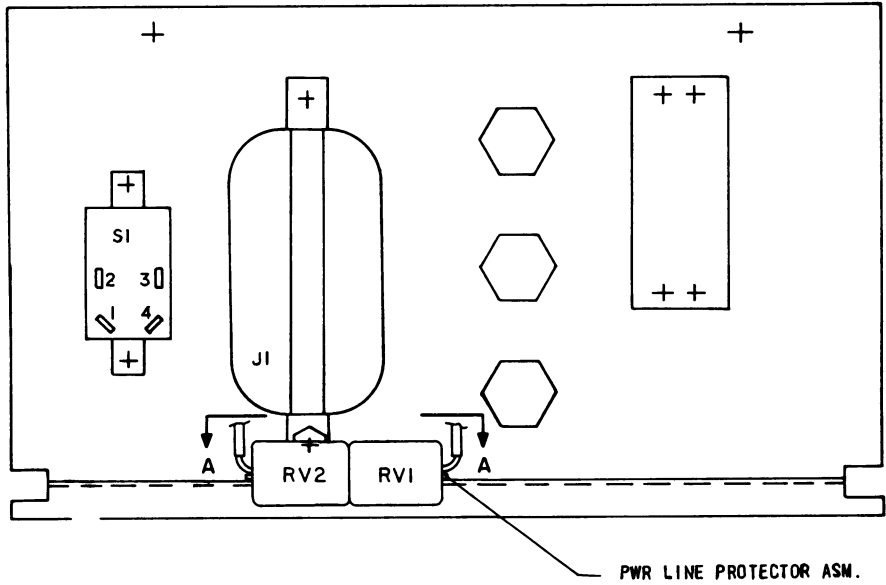
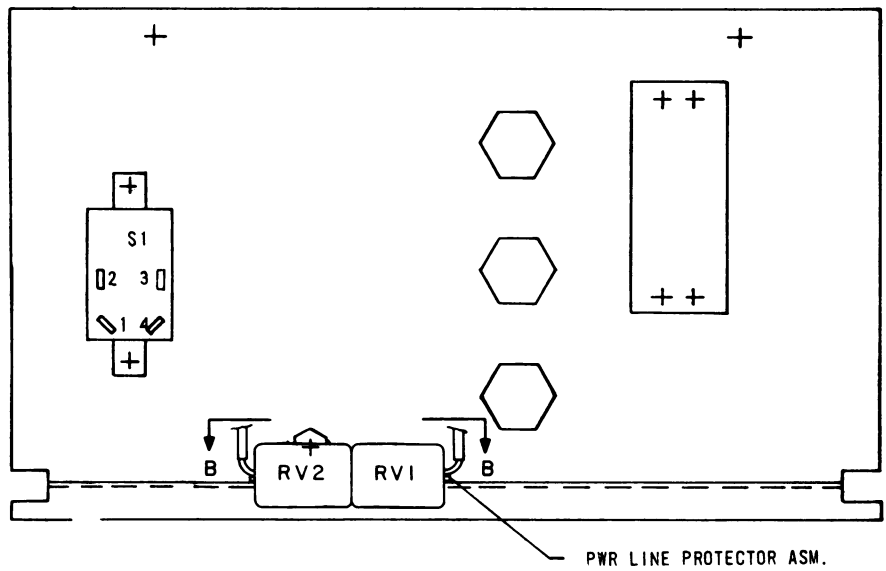
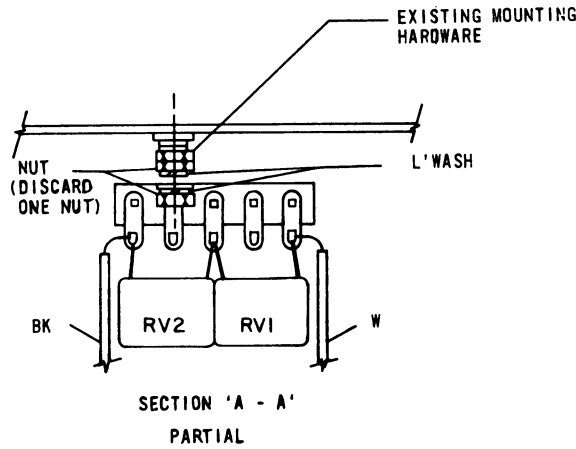


FIG. 3



INSTALLATION DIAGRAM

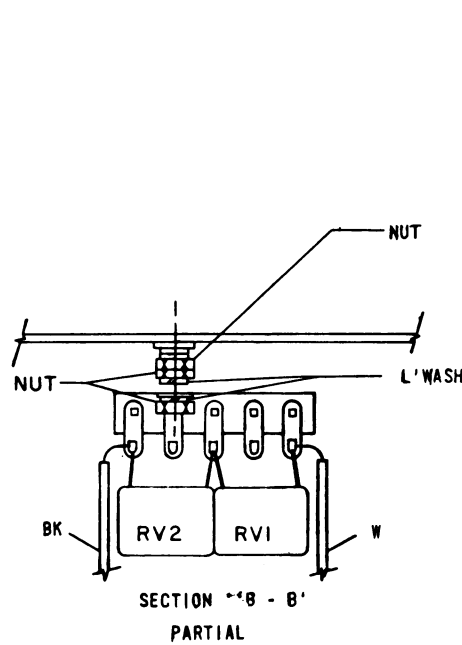


PWR LINE PROTECTOR KIT

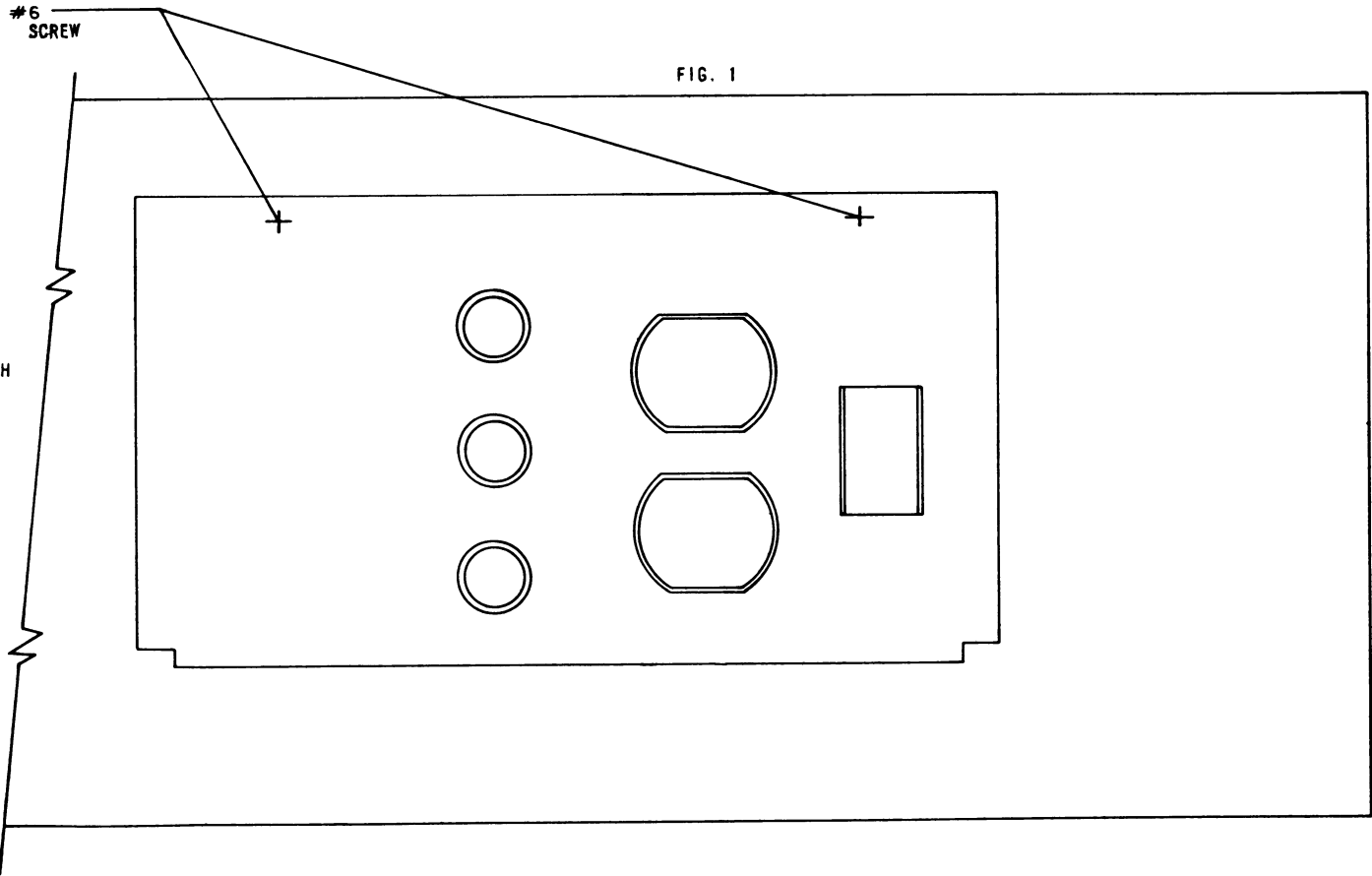
THESE INSTRUCTIONS COVER THE INSTALLATION OF THE PWR LINE PROTECTOR KIT (PL19A129370) TO THE (PL19E501149) PWR SUPPLY.

INSTRUCTIONS FOR THE PWR LINE PROTECTOR KIT (PL19A129370)

1. REMOVE TWO #6 SCREWS AND FOLD DOWN COVER. (SEE FIG. 1)
2. INSTALL PWR LINE PROTECTOR ASSEMBLY AS SHOWN IN FIG. 2 AND SECTION 'A-A' OR FIG. 3 AND SECTION 'B-B'.
3. SOLDER WHITE WIRE TO S1-2 AND BLACK WIRE TO S1-3.
4. RE-ASSEMBLE UNIT.



(19D417438, Rev. 4)



WIRING & INSTALLATION DIAGRAM

POWER LINE PROTECTOR KIT 19A129370

PARTS LIST

LBI-4712B

POWER LINE PROTECTOR KIT
19A129370G2

SYMBOL	GE PART NO.	DESCRIPTION
RV1 and RV2	19A134142P1	----- VARISTORS ----- Varistor: sim to GE SPD V130LAX576.
	TB2	----- TERMINAL BOARDS ----- Phen: 5 terminals.
	7141225P3 N404P13C6	----- MISCELLANEOUS ----- Hex nut: No. 6-32. Lockwasher, internal tooth: No. 6.

ORDERING SERVICE PARTS

Each component appearing on the schematic diagram is identified by a symbol number to simplify locating it in the parts list. Each component is listed by symbol number, followed by its description and GE Part Number.

Service parts may be obtained from Authorized GE Communication Equipment Service Stations or through any GE Radio Communication Equipment Sales Office. When ordering a part, be sure to give:

1. GE Part Number for component
2. Description of part
3. Model number of equipment
4. Revision letter stamped on unit

These instructions do not purport to cover all details or variations in equipment nor to provide for every possible contingency to be met in connection with installation, operation or maintenance.

Should further information be desired, or should particular problems arise which are not covered sufficiently for the purchaser's purposes, contact the nearest Radio Communication Equipment Sales Office of the General Electric Company.

MOBILE RADIO DEPARTMENT
GENERAL ELECTRIC COMPANY • LYNCHBURG, VIRGINIA 24502

