

INSTRUCTIONS FOR HANDSET/HOOKSWITCH

(FOR MASTR® CONTROLLER OPTIONS 8582, 8583, 8584 & 8585)
 (FOR LOCAL CONTROLLER OPTIONS 8631, 8632, 8633 & 8634)
 (FOR MASTR EXECUTIVE II OPTIONS 9901 & 9902)
 (FOR CUSTOM MVP OPTIONS 1926 & 1927)

CONTENTS

DESCRIPTION	1
CIRCUIT ANALYSIS	2
OUTLINE DIAGRAM	4
WIRING DIAGRAMS	
MASTR CONTROLLER	5
LOCAL CONTROLLER	6
CUSTOM MVP	7
MASTR EXECUTIVE II	8
INSTALLATION INSTRUCTIONS	
MASTR CONTROLLER	9
LOCAL CONTROLLER	10
CUSTOM MVP	11
MASTR EXECUTIVE II	12

DESCRIPTION

The HANDSET/HOOKSWITCH OPTIONS shown in the chart contain the necessary hardware and wiring to install the Handset/Hookswitch. The left-side mounting options are shipped from the factory attached to the control unit case. The DESK/WALL Right Side mounting options are shipped unattached with the right side mounting bracket included as part of the kit.

The Handset/Hookswitch Options have a unique magnetic switch that is operated in conjunction with a switching transistor and relay to switch the audio from the speaker to the handset. The magnetic switch is closed when the handset is placed in the retaining cradle and opened when the handset is lifted from the cradle. The handset also has a transmit push-to-talk switch conveniently located in the center of the handset.

When the handset is in the cradle the magnetic switch S1 is closed grounding the Base of Q1, turning it off. With Q1 turned off the relay K1 is de-energized. The audio comes in at "AUDIO HI IN", passes through the closed contacts 8 & 9 of K1 and out at "AUDIO HI OUT" to the speaker.

When the handset is removed from the cradle the magnetic switch S1 is opened providing a high to the base of Q1, turning it on. With Q1 conducting the relay K1 is energized. The audio comes in at "AUDIO HI IN", passes through the closed contacts 9 & 10 of K1 through R2 to the RX section of the handset to ground. R1/R4 and R2 are impedance matching resistors for the Audio output transformer. The TX microphone is connected to the "MIC HI" and "MIC LO".

When the transmit push-to-talk button on the handset is pushed, a ground is put on the PTT lead, keying the transmitter.

CIRCUIT ANALYSIS

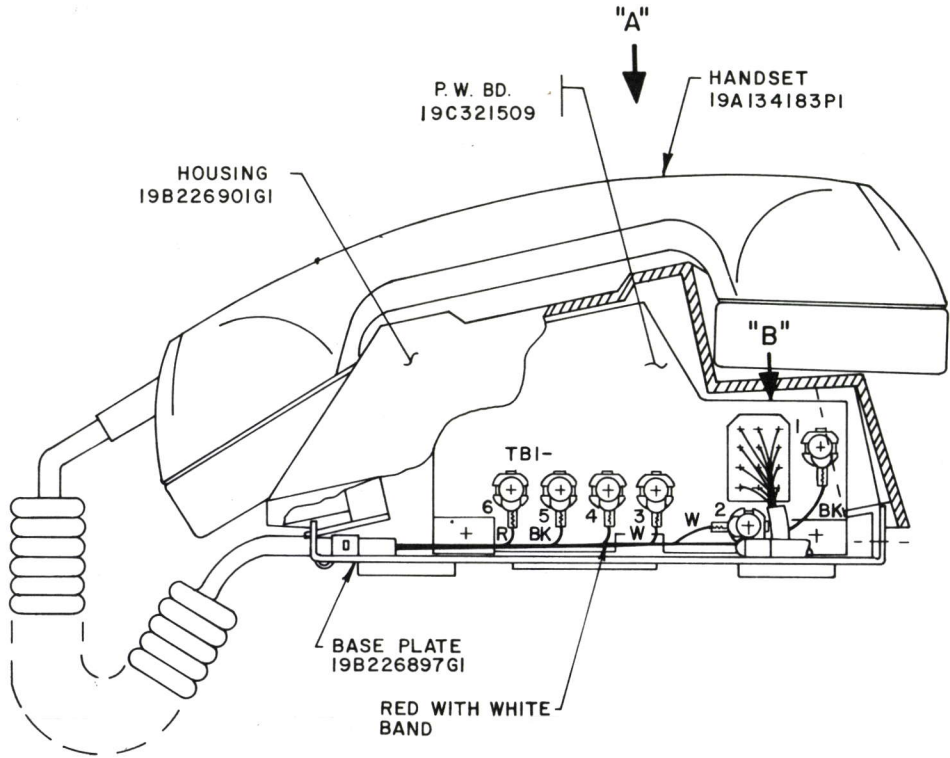
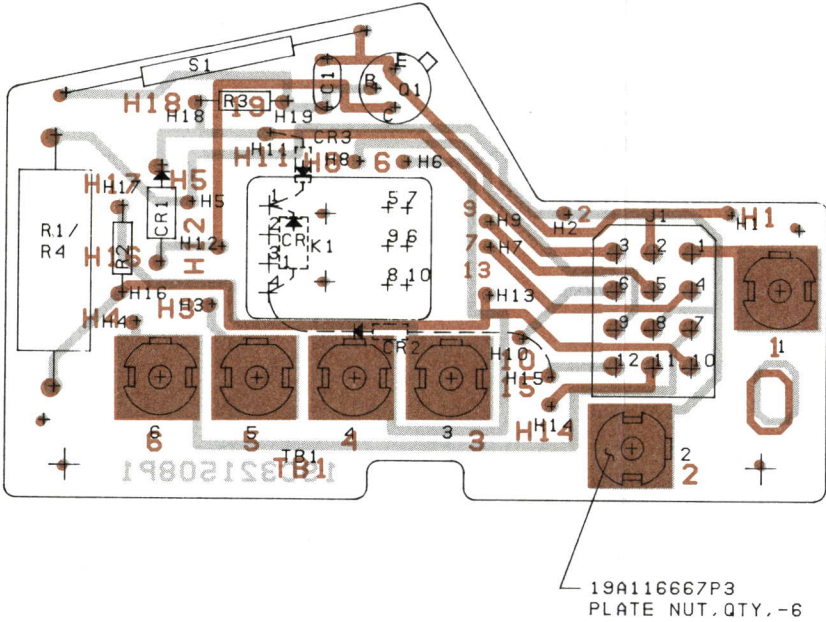
(Refer to the Wiring Diagram for the Unit).

CIRCUIT ANALYSIS

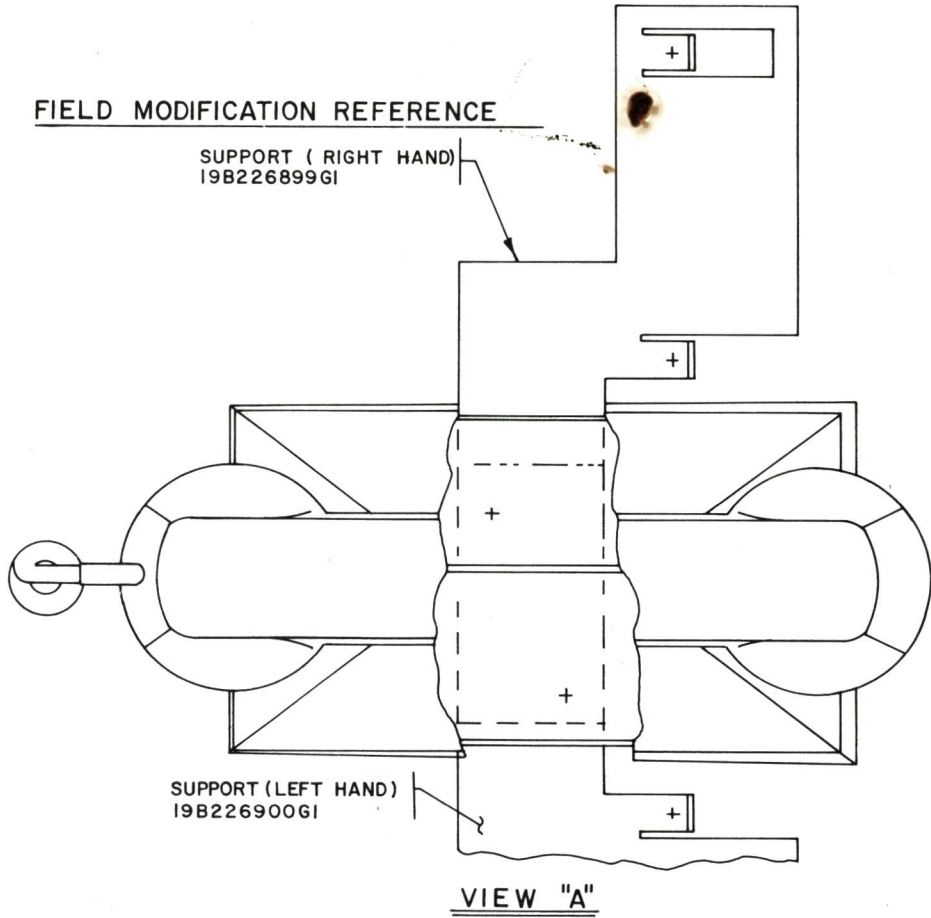
OPTION NUMBER	PRODUCT LINE	DESCRIPTION
8582 8631 9901	MASTR CONTROLLER MASTR LOCAL CON- TROLLER MASTR EXECUTIVE II	Deletes the standard 19B209458P1 micro- phone and adds the left side mount Hand- set/Hookswitch (attached).
8583 8632 9902	MASTR CONTROLLER MASTR LOCAL CON- TROLLER MASTR EXECUTIVE II	Deletes the Channel Guard 19B209459P1 microphone and adds the left side mount Handset/Hookswitch (attached).
8584 8633	MASTR CONTROLLER MASTR LOCAL CON- TROLLER	Deletes the standard 19B209458P1 micro- phone and adds the Desk/Wall right side mount Handset/Hookswitch (not attached).
8585 8634	MASTR CONTROLLER MASTR LOCAL CON- TROLLER	Deletes the Channel Guard 19B209459P1 microphone and adds the Desk/Wall right side mount Handset/Hookswitch (not attached).
1925	CUSTOM MVP	Deletes the 19C320270G1 microphone & 7141414G2 Hanger and adds the left side mount Handset/Hookswitch to the AC Power Supply.
1926	CUSTOM MVP	Adds the left side mount Handset/Hookswitch to the AC Power Supply.

GENERAL ELECTRIC COMPANY • MOBILE COMMUNICATIONS DIVISION
WORLD HEADQUARTERS • LYNCHBURG, VIRGINIA 24502 U.S.A.

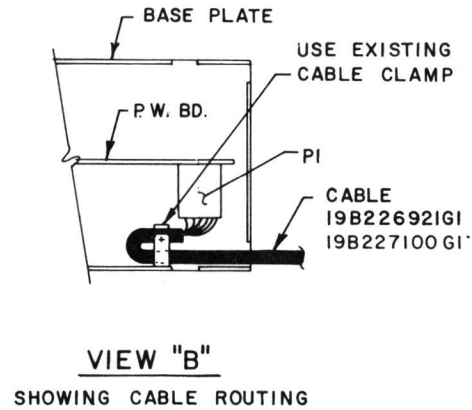
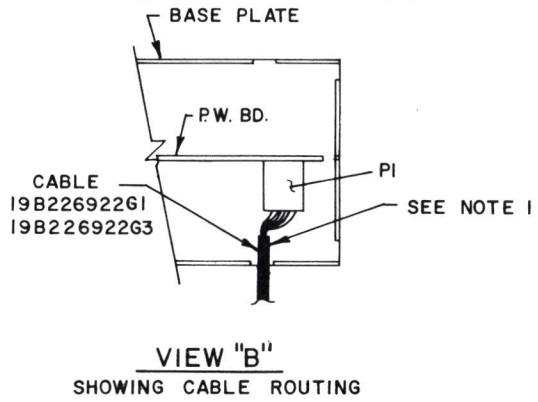




FIELD MODIFICATION REFERENCE

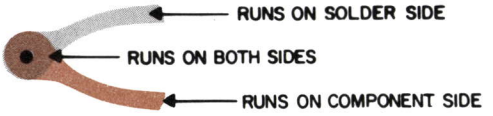


GROUP 1 FOR THE FOLLOWING CONNECTIONS SEE INTR. DIAC. 19D423321			GROUP 2 FOR THE FOLLOWING CONNECTIONS SEE INTR. DIAC. 19D423328		
FROM	TO	WIRE	FROM	TO	WIRE
H1	H2	DA	H3	H4	DA
H3	H5	DA			
H6	K1-7	DA	H6	K1-7	DA
H7	K1-6	DA	H7	K1-6	DA
H9	K1-9	DA	H9	K1-9	DA
H10	K1-8	DA	H10	K1-8	DA
			H11	K1-1	DA
			H12	K1-4	DA
H12	K1-4	DA	H13	K1-10	DA
H13	K1-10	DA			



NOTES:
1. DO NOT USE CABLE CLAMP.

OUTLINE DIAGRAM
HANDSET/HOOKSWITCH



PARTS LIST

LBI-4955A

HANDSET/HOOKSWITCH

SYMBOL	GE PART NO.	DESCRIPTION
		COMPONENT BOARD 19C321509G1
		----- CAPACITORS -----
C1	19A116080P1	Polyester: 0.01 μ f \pm 20%, 50 VDCW.
		----- DIODES AND RECTIFIERS -----
CR1	4037822P2	Silicon.
CR2	19A115250P1	Silicon.
CR3*	4037822P2	Silicon. Added by REV A.
		----- JACKS AND RECEPTACLES -----
J1	19A116647P6	Connector, printed wiring: 12 terminals, sim to Molex 09-18-5927.
		----- RELAYS -----
K1	19C307010P30	Armature: 24 VDC nominal, 2.0 w max operating, 520 ohms \pm 10% coil res, 2 form C contacts; sim to Allied Control T154X-1113.
		----- TRANSISTORS -----
Q1	19A115300P2	Silicon, NPN; sim to Type 2N3053.
		----- RESISTORS -----
R1	5493035P10	Wirewound: 3.5 ohms \pm 5%, 5 w; sim to Hamilton Hall Type HR.
R2	3R152P222K	Composition: 2.2K ohms \pm 10%, 1/4 w.
R3	3R152P562K	Composition: 5.6K ohms \pm 10%, 1/4 w.
		----- SWITCHES -----
S1	19A134193P1	Dry reed, relay: 1/4 amp at 100 v contact rating; sim to Gordos Corp MR 456.
		----- MISCELLANEOUS -----
	19A134183P1	Handset, transistorized dynamic, black; sim to Telephone Components TG-4. Includes Receiver Cartridge Telephone Components R-5 SR555, Transmitter cartridge Shure Brothers RP117, switch Telephone Components 741.
	19B226901G1	Housing.
	19B226897G1	Base Plate.
	19B226900G1	Mounting plate. (Left side mount hookswitch).
	19B226899G1	Mounting plate. (Right side mount hookswitch).
	19B226921G1	Cable: approx 7 feet long. Includes P1. (Right side mount hookswitch).
	19B226922G1	Cable: approx 3 feet long. Includes P1. (Left side mount hookswitch).

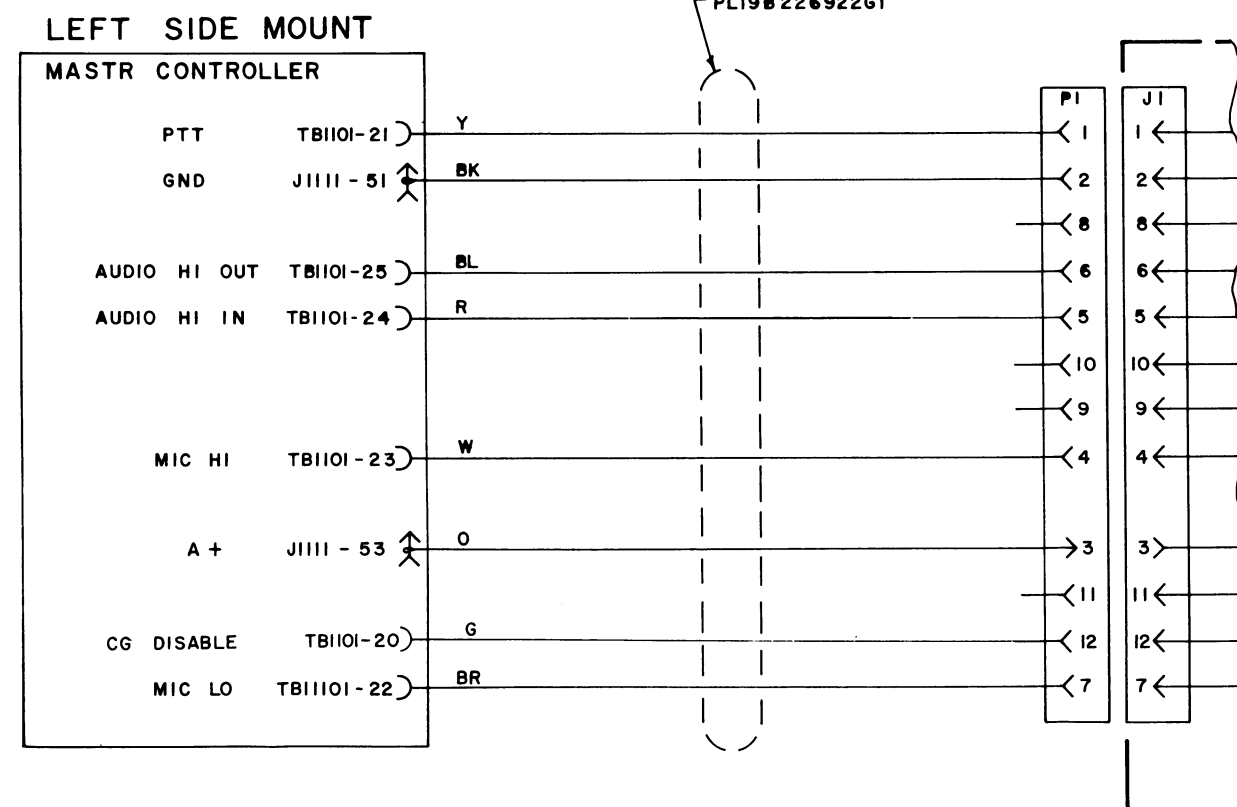
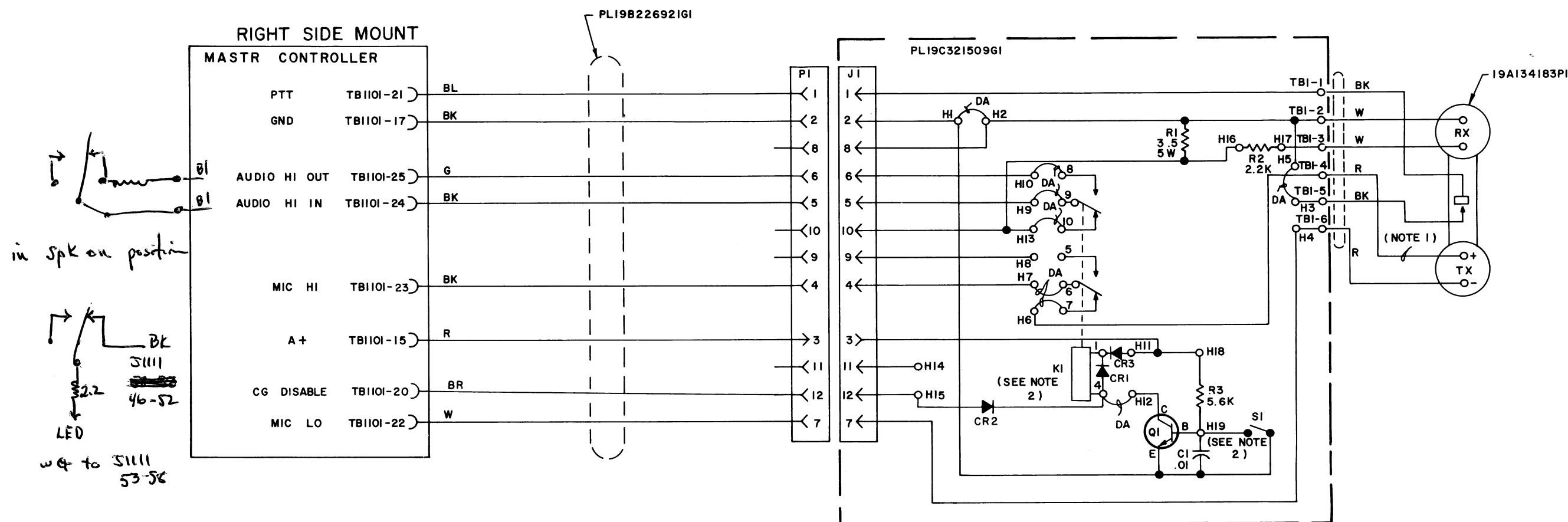
*COMPONENTS ADDED, DELETED OR CHANGED BY PRODUCTION CHANGES

PRODUCTION CHANGES

Changes in the equipment to improve performance or to simplify circuits are identified by a "Revision Letter," which is stamped after the model number of the unit. The revision stamped on the unit includes all previous revisions. Refer to the Parts List for descriptions of parts affected by these revisions.

Component Board 19C321509G1

REV. A - To stop the Channel Guard monitor lamp from remaining lit at all times when used with the right-hand mount handset/hookswitch option. Added CR3.



NOTES:

1. RED WIRE WITH WHITE BANDS MUST CONNECT WITH TBI- 4.
2. SHOWN WITH HANDSET OFF HOOK.

ALL RESISTORS ARE 1/2 WATT UNLESS OTHERWISE SPECIFIED AND RESISTOR VALUES IN OHMS UNLESS FOLLOWED BY K=1000 OHMS OR MEG = 1,000,000 OHMS. CAPACITOR VALUES IN PICOFARADS (EQUAL TO MICROMICROFARADS) UNLESS FOLLOWED BY UF = MICROFARADS. INDUCTANCE VALUES IN MICROHENRYS UNLESS FOLLOWED BY MH= MILLIHENRYS OR H=HENRYS.

IN ORDER TO RETAIN RATED EQUIPMENT PERFORMANCE, REPLACEMENT OF ANY SERVICE PART SHOULD BE MADE ONLY WITH A COMPONENT HAVING THE SPECIFICATIONS SHOWN ON THE PARTS LIST FOR THAT PART.

(19D423321, Rev. 5)

MODEL NO	REV LETTER
PL19C321509G1	A

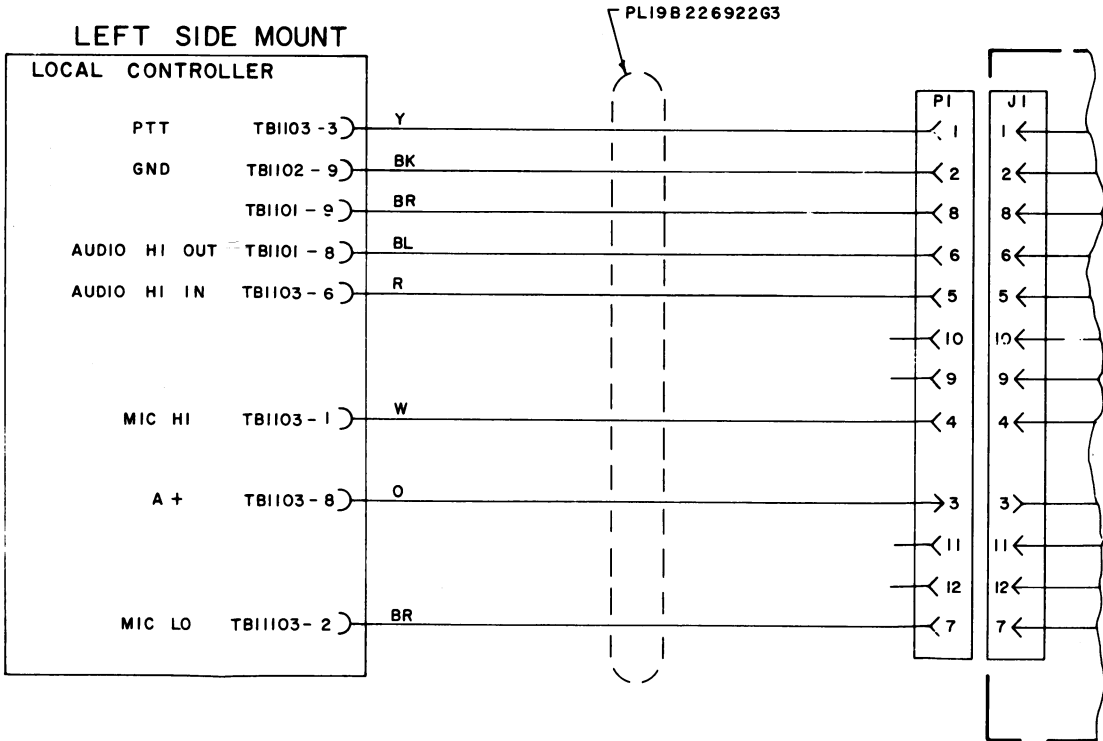
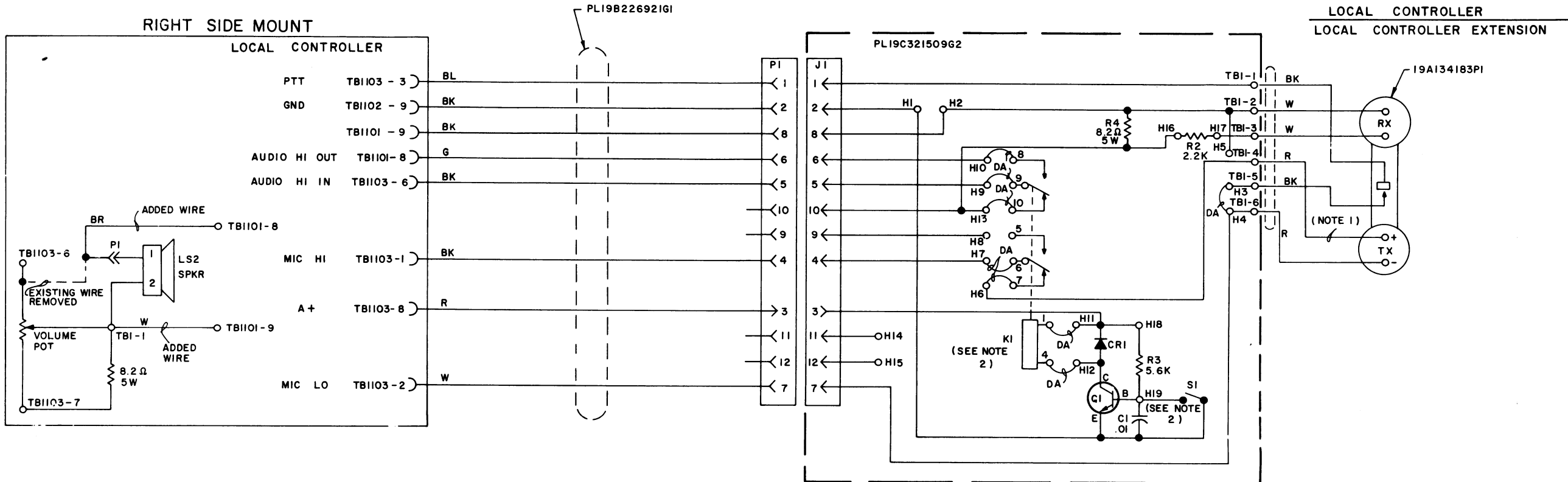
WIRING DIAGRAM

HANDSET/HOOKSWITCH

FOR MASTR CONTROLLER

Issue 4

5



- NOTES:
- 1. RED WIRE WITH WHITE BANDS MUST CONNECT WITH TBI- 4.
 - 2. SHOWN WITH HANDSET OFF HOOK.

ALL RESISTORS ARE 1/2 WATT UNLESS OTHERWISE SPECIFIED AND RESISTOR VALUES IN OHMS UNLESS FOLLOWED BY K=1000 OHMS OR MEG=1,000,000 OHMS. CAPACITOR VALUES IN PICO FARADS (EQUAL TO MICROMICROFARADS) UNLESS FOLLOWED BY UF= MICROFARADS. INDUCTANCE VALUES IN MICROHENRYS UNLESS FOLLOWED BY MH= MILLIHENRYS OR H=HENRYS.

IN ORDER TO RETAIN RATED EQUIPMENT PERFORMANCE, REPLACEMENT OF ANY SERVICE PART SHOULD BE MADE ONLY WITH A COMPONENT HAVING THE SPECIFICATIONS SHOWN ON THE PARTS LIST FOR THAT PART.

(19D423328, Rev. 5)

PARTS LIST

LBI-4960
HANDSET/HOOKSWITCH

SYMBOL	GE PART NO.	DESCRIPTION
		COMPONENT BOARD 19C321509G2
C1	19A116080P1	----- CAPACITORS ----- Polyester: 0.01 μ f \pm 20%, 50 VDCW.
CR1	4037822P2	----- DIODES AND RECTIFIERS ----- Silicon.
J1	19A116647P4	----- JACKS AND RECEPTACLES ----- Connector, printed wiring: 12 terminals, sim to Molex 03-04-4121.
K1	19C307010P30	----- RELAYS ----- Armature: 24 VDC nominal, 2.0 w max operating, 520 ohms \pm 10% coil res, 2 form C contacts; sim to Allied Control T154X-1113.
Q1	19A115300P2	----- TRANSISTORS ----- Silicon, NPN; sim to Type 2N3053.
R2	3R152P222K	----- RESISTORS ----- Composition: 2200 ohms \pm 10%, 1/4 w.
R3	3R152P562K	Composition: 5600 ohms \pm 10%, 1/4 w.
R4	5493035P52	Wirewound: 8.2 ohms \pm 10%, 5 w; sim to Hamilton Hall Type HR.
S1	19A134193P1	----- SWITCHES ----- Dry reed, relay: 1/4 amp at 100 v contact rating; sim to Gordos Corp MR 456.
		----- MISCELLANEOUS -----
	19A134183P1	Handset, transistorized dynamic, black; sim to Telephone Components TG-4. Includes Receiver Cartridge Telephone Components R-5 SR555, Transmitter cartridge Shure Brothers RPl17, switch Telephone Components 741.
	19B226901G1	Housing.
	19B226897G1	Base Plate.
	19B226900G1	Mounting plate. (Left side mount hookswitch).
	19B226899G1	Mounting plate. (Right side mount hookswitch).
	19B226921G1	Cable: approx 7 feet long. Includes P1. (Right side mount hookswitch).
	19B226922G3	Cable: approx 3 feet long. Includes P1. (Left side mount hookswitch).
	19A130453G1	Jumper Cable. (2 terminals).
	19A130453G2	Jumper Cable. (1 terminal).

*COMPONENTS ADDED, DELETED OR CHANGED BY PRODUCTION CHANGES

WIRING DIAGRAM

HANDSET/HOOKSWITCH
FOR MASTR LOCAL CONTROLLER

PARTS LIST

LB1-4955A

HANDSET/HOOKSWITCH

SYMBOL	GE PART NO.	DESCRIPTION
		COMPONENT BOARD 19C321509G1
C1	19A116080P1	----- CAPACITORS ----- Polyester: 0.01 μ f \pm 20%, 50 VDCW.
CR1	4037822P2	----- DIODES AND RECTIFIERS ----- Silicon.
CR2	19A115250P1	Silicon.
CR3*	4037822P2	Silicon. Added by REV A.
J1	19A116647P6	----- JACKS AND RECEPTACLES ----- Connector, printed wiring: 12 terminals, sim to Molex 09-18-5927.
K1	19C307010P30	----- RELAYS ----- Armature: 24 VDC nominal, 2.0 w max operating, 520 ohms \pm 10% coil res, 2 form C contacts; sim to Allied Control T154X-1113.
Q1	19A115300P2	----- TRANSISTORS ----- Silicon, NPN; sim to Type 2N3053.
R1	5493035P10	----- RESISTORS ----- Wirewound: 3.5 ohms \pm 5%, 5 w; sim to Hamilton Hall Type HR.
R2	3R152P222K	Composition: 2.2K ohms \pm 10%, 1/4 w.
R3	3R152P562K	Composition: 5.6K ohms \pm 10%, 1/4 w.
S1	19A134193P1	----- SWITCHES ----- Dry reed, relay: 1/4 amp at 100 v contact rating; sim to Gordos Corp MR 456.
		----- MISCELLANEOUS -----
	19A134183P1	Handset, transistorized dynamic, black; sim to Telephone Components TG-4. Includes Receiver Cartridge Telephone Components R-5 SR555, Transmitter cartridge Shure Brothers RP117, switch Telephone Components 741.
	19B226901G1	Housing.
	19B226897G1	Base Plate.
	19B226900G1	Mounting plate. (Left side mount hookswitch).
	19B226899G1	Mounting plate. (Right side mount hookswitch).
	19B226921G1	Cable: approx 7 feet long. Includes P1. (Right side mount hookswitch).
	19B226922G1	Cable: approx 3 feet long. Includes P1. (Left side mount hookswitch).

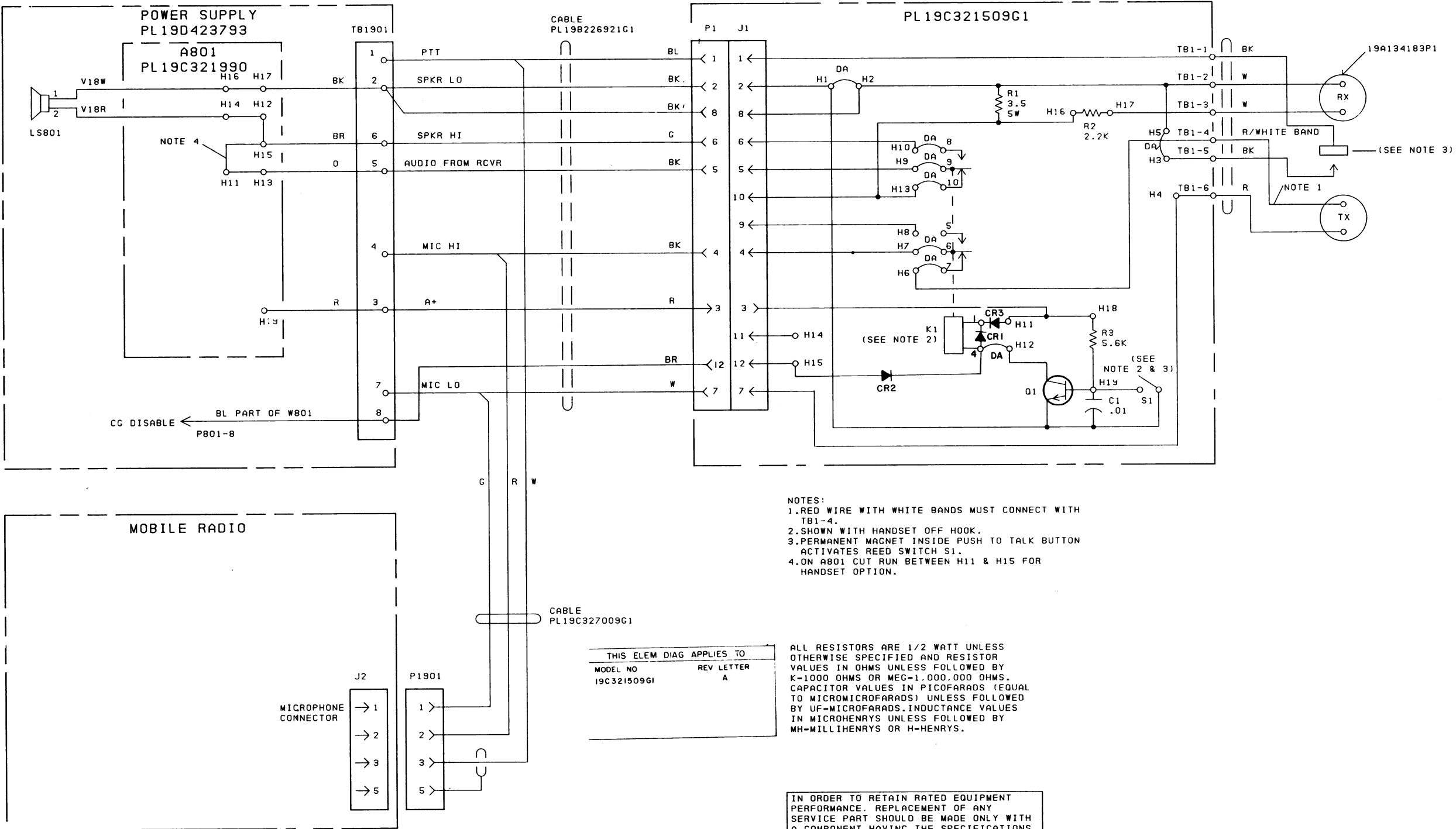
*COMPONENTS ADDED, DELETED OR CHANGED BY PRODUCTION CHANGES

PRODUCTION CHANGES

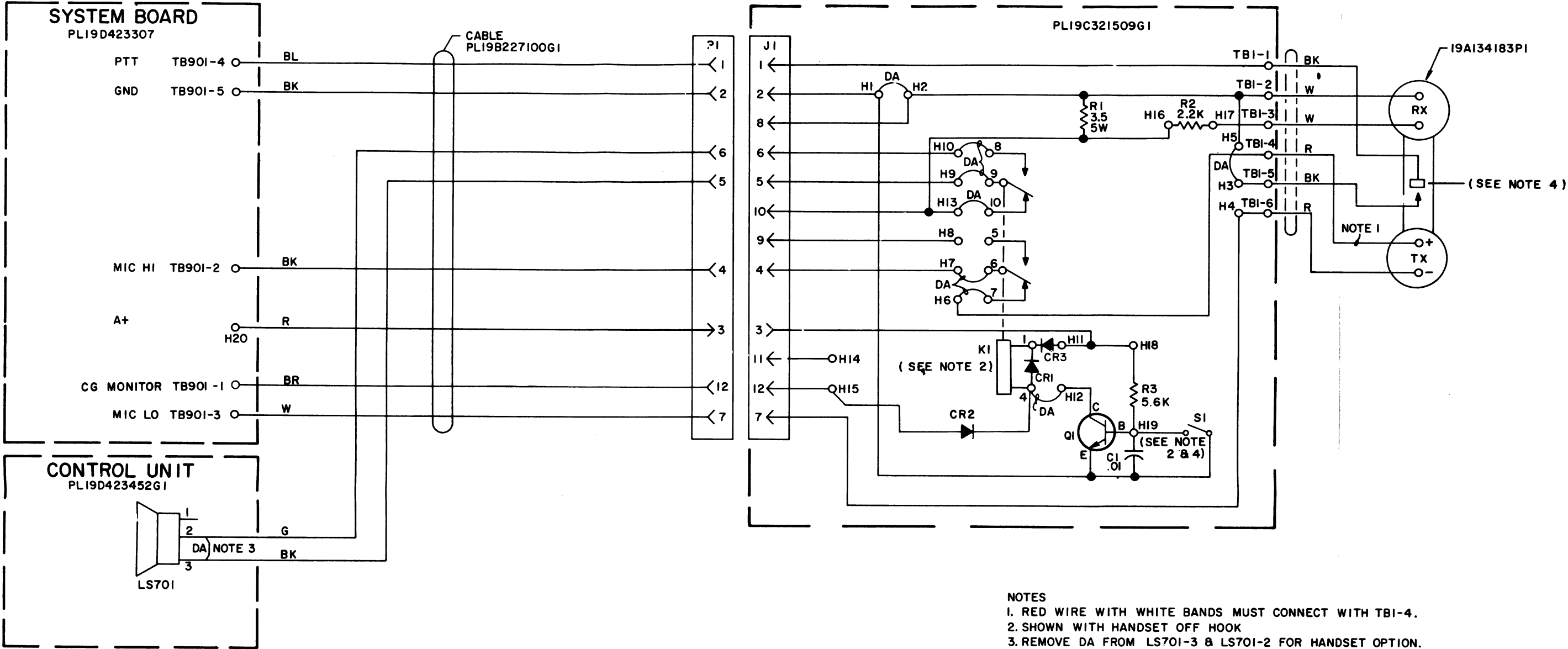
Changes in the equipment to improve performance or to simplify circuits are identified by a "Revision Letter", which is stamped after the model number of the unit. The revision stamped on the unit includes all previous revisions. Refer to the Parts List for descriptions of parts affected by these revisions.

Component Board 19C321509G1

REV. A - To stop the Channel Guard monitor lamp from remaining lit at all times when used with the right-hand mount handset/hookswitch option. Added CR3.



(19D423924, Rev. 6)



- NOTES
- 1. RED WIRE WITH WHITE BANDS MUST CONNECT WITH TBI-4.
 - 2. SHOWN WITH HANDSET OFF HOOK
 - 3. REMOVE DA FROM LS701-3 & LS701-2 FOR HANDSET OPTION.
 - 4. PERMANENT MAGNET INSIDE PUSH TO TALK BUTTON ACTIVATES REED SWITCH S1.

IN ORDER TO RETAIN RATED EQUIPMENT PERFORMANCE, REPLACEMENT OF ANY SERVICE PART SHOULD BE MADE ONLY WITH A COMPONENT HAVING THE SPECIFICATIONS SHOWN ON THE PARTS LIST FOR THAT PART.

ALL RESISTORS ARE 1/2 WATT UNLESS OTHERWISE SPECIFIED AND RESISTOR VALUES IN OHMS UNLESS FOLLOWED BY K=1000 OHMS OR MEG=1,000,000 OHMS. CAPACITOR VALUES IN PICO FARADS (EQUAL TO MICROMICROFARADS) UNLESS FOLLOWED BY UF= MICROFARADS. INDUCTANCE VALUES IN MICROHENRYS UNLESS FOLLOWED BY MH= MILLIHENRYS OR H=HENRYS.

THIS ELEM DIAG APPLIES TO	
MODEL NO	REV LETTER
19C321509G1	A

PARTS LIST

LBI-4955A

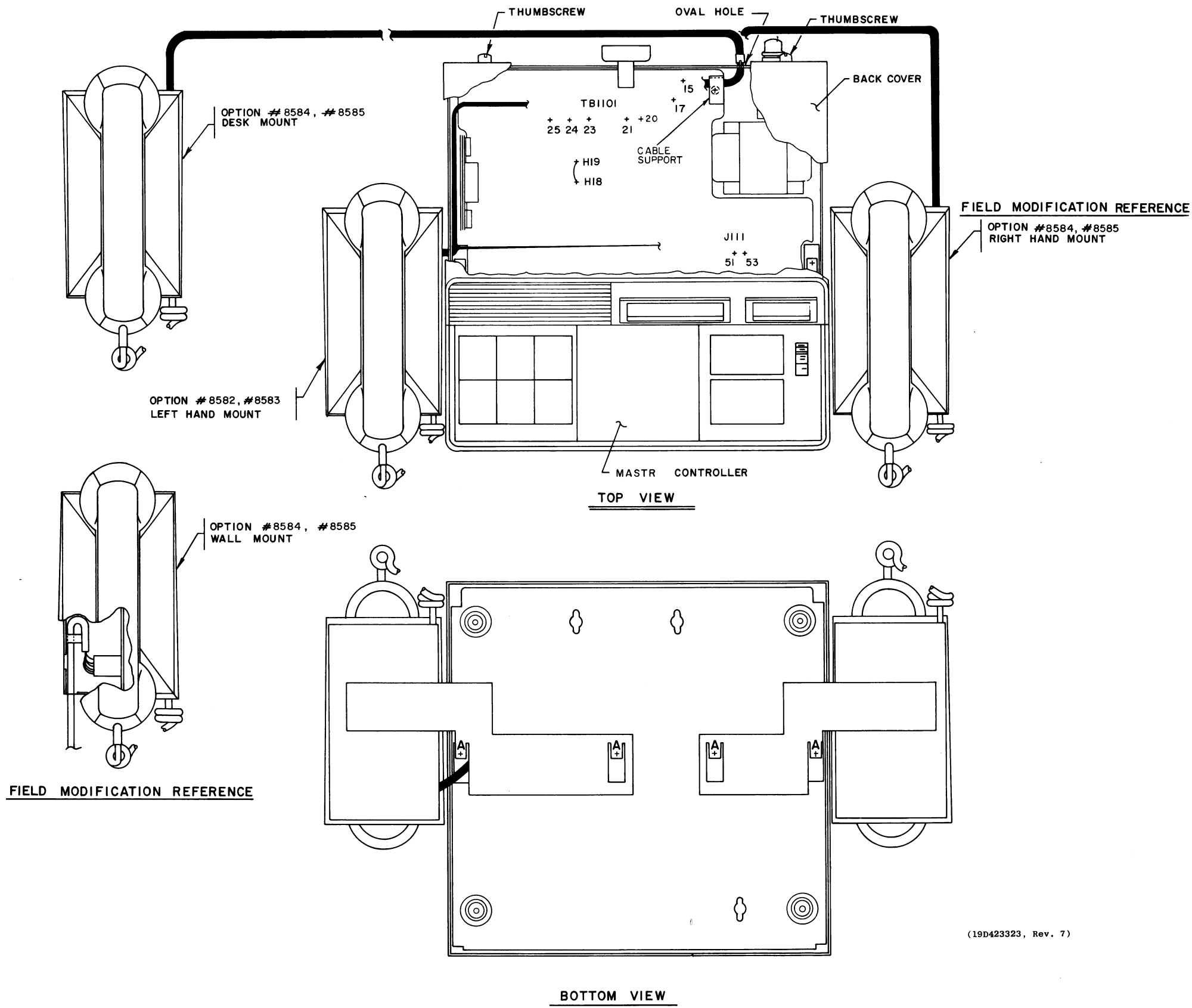
HANDSET/HOOKSWITCH

SYMBOL	GE PART NO.	DESCRIPTION
COMPONENT BOARD 19C321509G1		
----- CAPACITORS -----		
C1	19A116080P1	Polyester: 0.01 μ f \pm 20%, 50 VDCW.
----- DIODES AND RECTIFIERS -----		
CR1	4037822P2	Silicon.
CR2	19A115250P1	Silicon.
CR3*	4037822P2	Silicon. Added by REV A.
----- JACKS AND RECEPTACLES -----		
J1	19A116647P6	Connector, printed wiring: 12 terminals, sim to Molex 09-18-5927.
----- RELAYS -----		
K1	19C307010P30	Armature: 24 VDC nominal, 2.0 w max operating, 520 ohms \pm 10% coil res, 2 form C contacts; sim to Allied Control T154X-1113.
----- TRANSISTORS -----		
Q1	19A115300P2	Silicon, NPN; sim to Type 2N3053.
----- RESISTORS -----		
R1	5493035P10	Wirewound: 3.5 ohms \pm 5%, 5 w; sim to Hamilton Hall Type HR.
R2	3R152P222K	Composition: 2.2K ohms \pm 10%, 1/4 w.
R3	3R152P562K	Composition: 5.6K ohms \pm 10%, 1/4 w.
----- SWITCHES -----		
S1	19A134183P1	Dry reed, relay: 1/4 amp at 100 v contact rating; sim to Gordos Corp MR 456.
----- MISCELLANEOUS -----		
	19A134183P1	Handset, transistorized dynamic, black; sim to Telephone Components TG-4. Includes Receiver Cartridge Telephone Components R-5 SR555, Transmitter cartridge Shure Brothers RPl17, switch Telephone Components 741.
	19B226901G1	Housing.
	19B226897G1	Base Plate.
	19B226900G1	Mounting plate. (Left side mount hookswitch).
	19B226899G1	Mounting plate. (Right side mount hookswitch).
	19B226921G1	Cable: approx 7 feet long. Includes Pl. (Right side mount hookswitch).
	19B226922G1	Cable: approx 3 feet long. Includes Pl. (Left side mount hookswitch).

*COMPONENTS ADDED, DELETED OR CHANGED BY PRODUCTION CHANGES

WIRING DIAGRAM

HANDSET/HOOKSWITCH
FOR MASTR EXECUTIVE II



MASTR CONTROLLER

THIS INSTRUCTION COVERS THE INSTALLATION OF A HANDSET HOOKSWITCH TO THE MASTR CONTROLLER.

LEFT HAND MOUNT (OPTION 8582 & 8583)

1. REMOVE BACK COVER OF MASTR CONTROLLER BY LOOSENING TWO REAR THUMBSCREWS.
2. TURN UNIT UPSIDE DOWN ON A SMOOTH SURFACE.
3. REMOVE FOUR FRONT HOUSING SCREWS AT "A" AS SHOWN IN BOTTOM VIEW. SAVE SCREWS.
4. ROUTE HANDSET CABLE THROUGH SLOT IN CONTROLLER BASE AS SHOWN IN BOTTOM VIEW.
5. PLACE HANDSET IN POSITION SHOWN. MATCH HANDSET MOUNTING SLOTS WITH SLOTS IN CONTROLLER BASE.
6. REPLACE SCREWS AT "A" SAVED FROM STEP 3.
7. ROUTE CABLE INSIDE CONTROLLER AS SHOWN IN TOP VIEW. CRIMP ON STRAIN RELIEF CABLE CLAMP.
8. MAKE ELECTRICAL CONNECTIONS AS SHOWN IN CHART BELOW.

FROM	COLOR	WIRE	TO
PI-1	Y	SF-24	TB1101-21
PI-2	BK	SF-24	J1111-51
PI-3	C	SF-24	J1111-53
PI-4	W	WIRE PAIR	TB1101-23
PI-7	BR		TB1101-22
PI-5	R	WIRE PAIR	TB1101-24
PI-6	BL		TB1101-25
PI-12	G	SF-24	TB1101-20

NOTE 11

NOTE 12

9. CLIP OUT DA JUMPER ON SYSTEM BOARD FROM H18 TO H19.
10. REPLACE MASTR CONTROLLER BACK COVER AND TIGHTEN REAR THUMBSCREWS.
11. WHEN TONE DECODER OPTION 8560 OR 8565 IS PRESENT, CONNECT PI-5 (R) TO TB1101-26.
12. IF OPTION 8582 IS CALLED FOR, SLEEVE GREEN WIRE AND TIE BACK INTO HARNESS DESK/WALL/RIGHT HAND MOUNT (OPTION #8584 & #8585).

1. REMOVE BACK COVER OF MASTR CONTROLLER BY LOOSENING TWO REAR THUMBSCREWS.

2. ROUTE CABLE THROUGH OVAL HOLE IN CHASSIS AS SHOWN. CRIMP ON STRAIN RELIEF CABLE CLAMP.
3. CLIP IN STRAIN RELIEF IN SLOT ABOVE CABLE ENTRANCE.

4. ROUTE CABLE AND MAKE ELECTRICAL CONNECTIONS AS SHOWN BELOW IN CHART.

FROM	COLOR	WIRE PAIR	TO
PI-1	BL	R/BK	TB1101-21
PI-3	R		TB1101-15
PI-2	BK	BK/W	TB1101-17
PI-4	BK		TB1101-23
PI-7	W	BK/G	TB1101-22
PI-5	BK		TB1101-24
PI-6	G	BK/Y	TB1101-25
PI-12	BR		TB1101-20
PI-8	BK	CUT OFF	

NOTE 7

NOTE 8

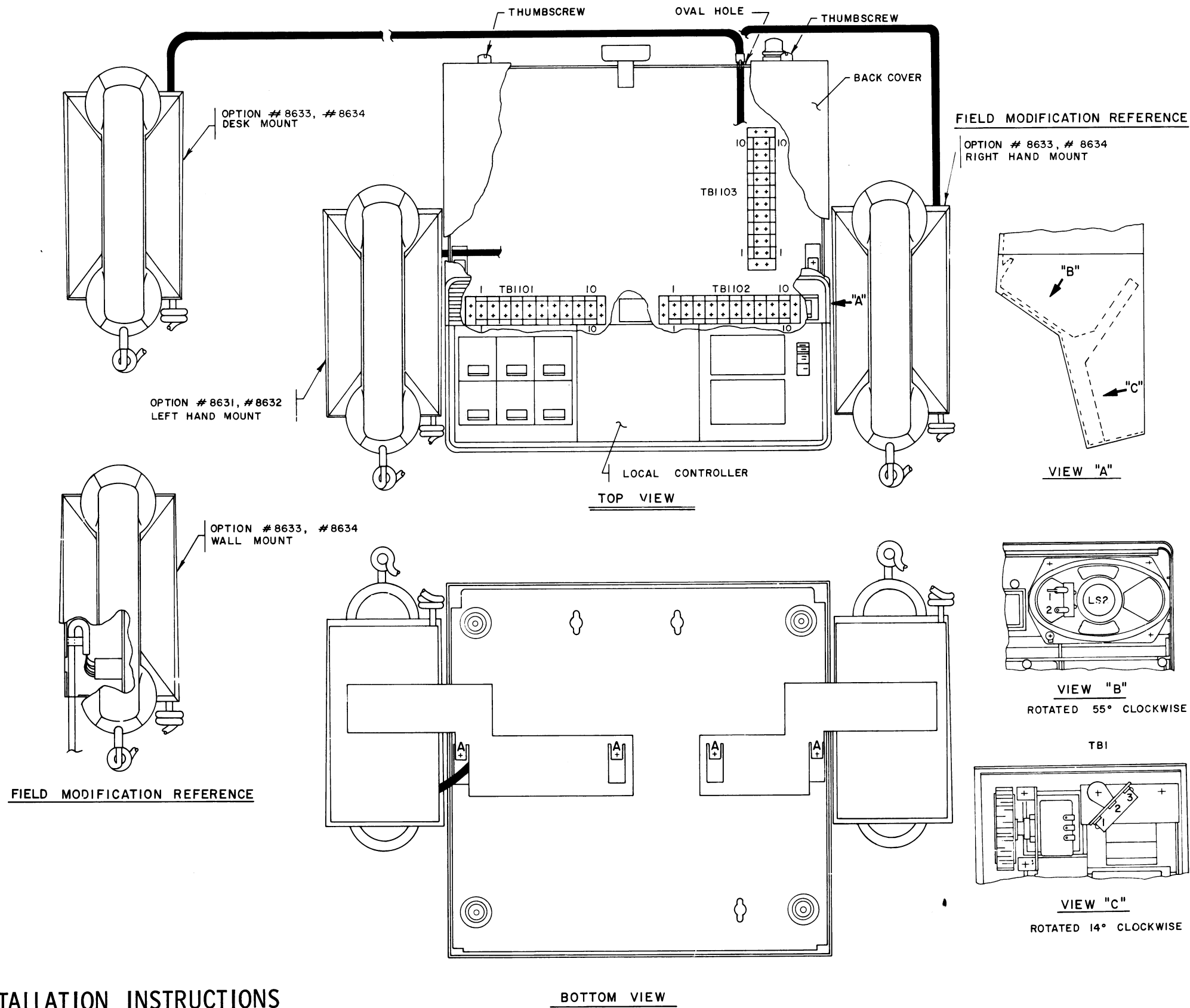
5. CLIP OUT DA JUMPER ON SYSTEM BOARD FROM H18 TO H19.
6. REPLACE MASTR CONTROLLER BACK COVER AND TIGHTEN REAR THUMBSCREWS.
7. WHEN TONE DECODER OPTION 8560 OR 8565 IS PRESENT, CONNECT PI-5 (BK) TO TB1101-26.
- * NOTE: THIS OPTION IS SUPPLIED FOR DESK MOUNT APPLICATION. SEE APPROPRIATE VIEW FOR FIELD MODIFICATION REQUIRED FOR WALL MOUNT APPLICATION.
8. IF OPTION 8584 IS CALLED FOR, SLEEVE BROWN WIRE AND TIE BACK INTO HARNESS.

(19D423323, Rev. 7)

INSTALLATION INSTRUCTIONS
MASTR CONTROLLER

INSTALLATION INSTRUCTIONS

LOCAL CONTROLLER



LOCAL CONTROLLER AND LOCAL CONTROLLER EXTENTION

THIS INSTRUCTION COVERS THE INSTALLATION OF A HANDSET HOOKSWITCH TO THE LOCAL CONTROLLER

LEFT HAND MOUNT (OPTION 8631 & 8632)

1. REMOVE BACK COVER OF LOCAL CONTROLLER BY LOOSENING TWO REAR THUMBSCREWS.
2. TURN UNIT UPSIDE DOWN ON SMOOTH SURFACE.
3. REMOVE FOUR FRONT HOUSING SCREWS AT "A" AS SHOWN IN BOTTOM VIEW. SAVE SCREWS.
4. ROUTE HANDET CABLE THROUGH SLCT IN CONTROLLER BASE AS SHOWN IN BOTTOM VIEW. CRIMP ON STRAIN RELIEF CABLE CLAMP.
5. PLACE HANDET IN POSITION SHOWN. MATCH HANDET MOUNTING SLOTS WITH SLOTS IN CONTROLLER BASE.
6. REMOVE W-BK-C WIRE FROM LS2-1 & TIE TO EXISTING HARNESS (SEE VIEW "B").
7. CONNECT BR WIRE SUPPLIED (PL19A130453G1) BETWEEN LS2-1 & TB1101-8.
8. CONNECT WHITE WIRE SUPPLIED (PL19A130453G2) BETWEEN TB1-1 & TB1101-9. SOLDER AT TB1-1 (SEE VIEW "C").
9. SPCT TIE TO HARNESS.
10. MAKE ELECTRICAL CONNECTIONS AS SHOWN IN CHART BELOW.

FROM	COLOR	WIRE	TC
PI-1	Y	SF-24	TB1103-3
PI-2	BK	SF-24	TB1102-9
PI-3	O	SF-24	TB1107-8
PI-4	W	WIRE PAIR	TB1103-1
PI-7	BR		TB1103-2
PI-5	R	WIRE PAIR	TB1103-6
PI-6	BL		TB1101-8
PI-8	BR		TB1101-9

NOTE 13

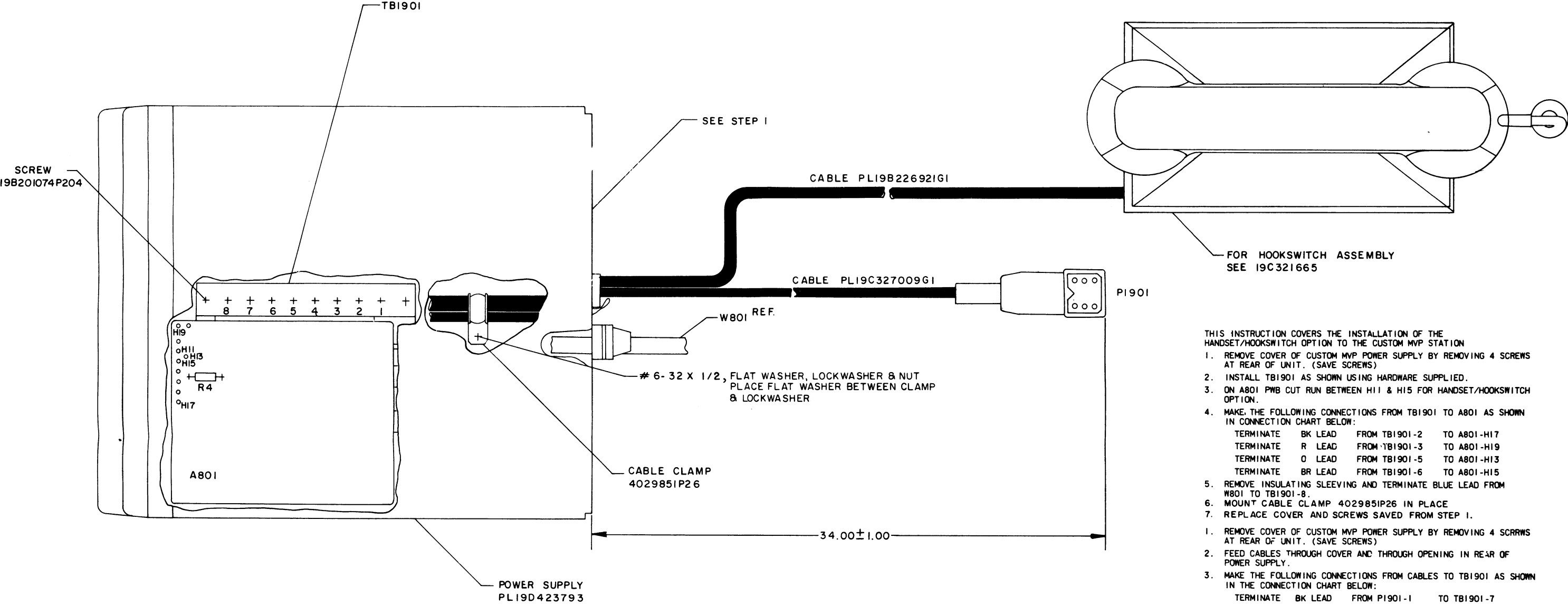
11. REPLACE SCREWS AT "A" SAVED FROM STEP 3.
 12. REPLACE LOCAL CONTROLLER BACK COVER AND TIGHTEN REAR THUMBSCREWS.
 13. WHEN TONE DECODER OPTION 8623 IS PRESENT, CONNECT PI-5 (R) TO TB1101-10.
- DESK/WALL/RIGHT HAND MOUNT (OPTION 8633 & 8634)

1. REMOVE BACK COVER OF LOCAL CONTROLLER BY LOOSENING TWO REAR THUMBSCREWS.
2. ROUTE CABLE THROUGH OVAL HOLE IN CHASSIS AS SHOWN.
CRIMP ON STRAIN RELIEF CABLE CLAMP.
3. CLIP IN STRAIN RELIEF IN SLOT ABOVE CABLE ENTRANCE.
4. ROUTE CABLE AND MAKE ELECTRICAL CONNECTIONS AS SHOWN BELOW IN CH-RT.

FROM	COLOR	WIRE	TC
PI-1	BL	PART OF WIRE PAIR BL/BK	TB1103-3
PI-3	R	PAIR	TB1103-8
PI-2	BK	R/BK	TB1102-9
PI-4	BK	PAIR	TB1103-1
PI-7	W	BK/W	TB1103-2
PI-5	BK	PAIR	TB11C3-6
PI-6	G	BK/G	TB1101-8
PI-8	BK	PART OF WIRE PAIR BK/Y	TB1101-9
PI-12	BR	BR/BK	CUT OFF

NOTE 10

5. REMOVE W-BK-C WIRE FROM LS2-1 & TIE TO EXISTING HARNESS (SEE VIEW "B")
 6. CONNECT BR WIRE SUPPLIED (PL19A130453G1) BETWEEN LS2-1 & TB1101-8.
 7. CONNECT WHITE WIRE SUPPLIED (PL19A130453G2) BETWEEN TB1-1 & TB1101-9.
SOLDER AT TB1-1 (SEE VIEW "C").
 8. SPOT TIE TO HARNESS.
 9. REPLACE LOCAL CONTROLLER BACK COVER AND TIGHTEN REAR THUMPSCREWS.
 10. WHEN TONE DECODER OPTION 8623 IS PRESENT, CONNECT P1-5 (BK) TO TB1101-10.
- * NOTE: THIS OPTION IS SUPPLIED FOR DESK MOUNT APPLICATION. SAME AS MASTR CONTROLLER.



- THIS INSTRUCTION COVERS THE INSTALLATION OF THE HANDSET/HOOKSWITCH OPTION TO THE CUSTOM MVP STATION
1. REMOVE COVER OF CUSTOM MVP POWER SUPPLY BY REMOVING 4 SCREWS AT REAR OF UNIT. (SAVE SCREWS)
 2. INSTALL TB1901 AS SHOWN USING HARDWARE SUPPLIED.
 3. ON A801 PWB CUT RUN BETWEEN H11 & H15 FOR HANDSET/HOOKSWITCH OPTION.
 4. MAKE THE FOLLOWING CONNECTIONS FROM TB1901 TO A801 AS SHOWN IN CONNECTION CHART BELOW:

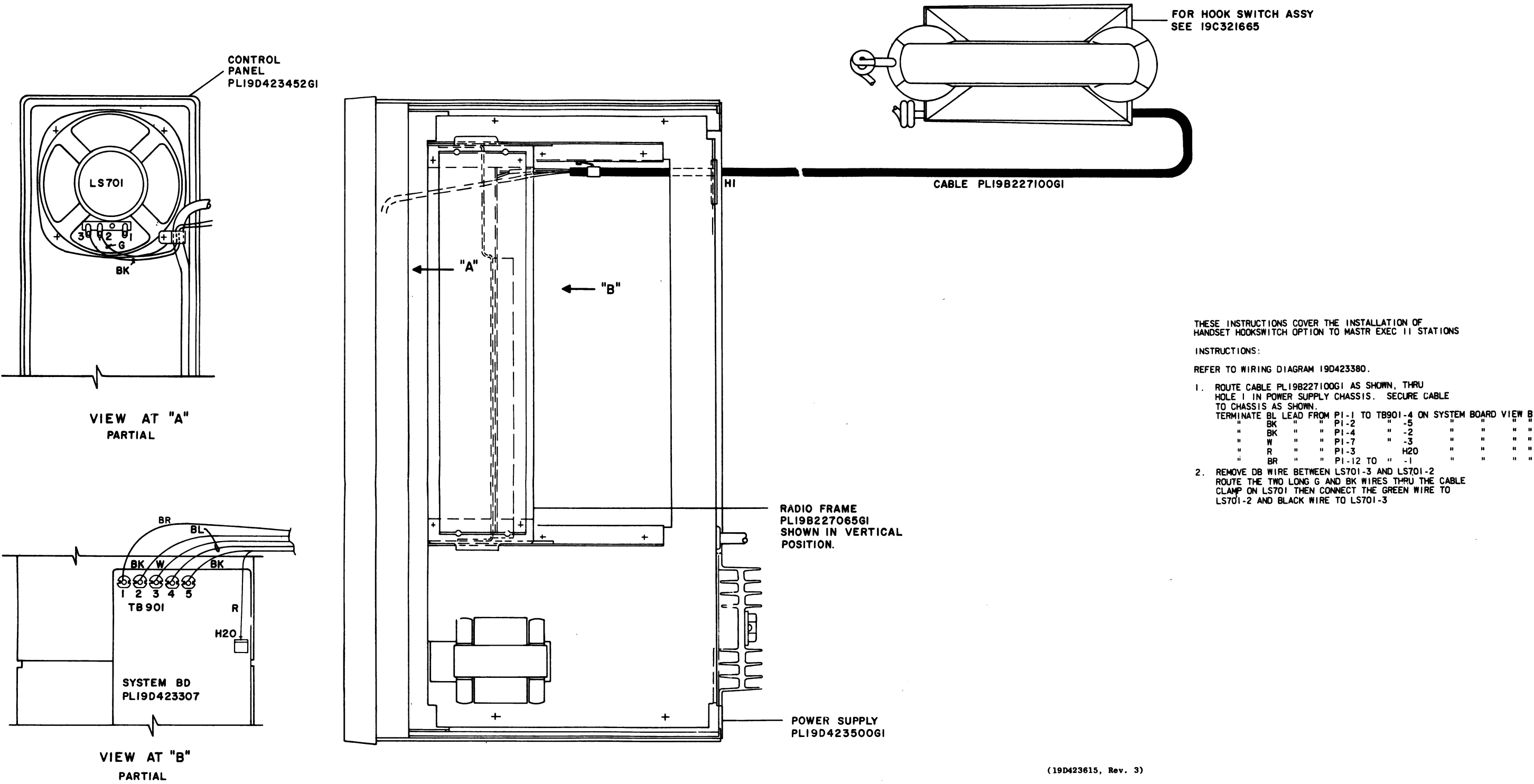
TERMINATE	BK LEAD	FROM TB1901-2	TO A801-H17
TERMINATE	R LEAD	FROM TB1901-3	TO A801-H19
TERMINATE	O LEAD	FROM TB1901-5	TO A801-H13
TERMINATE	BR LEAD	FROM TB1901-6	TO A801-H15
 5. REMOVE INSULATING SLEEVING AND TERMINATE BLUE LEAD FROM W801 TO TB1901-8.
 6. MOUNT CABLE CLAMP 402985IP26 IN PLACE
 7. REPLACE COVER AND SCREWS SAVED FROM STEP 1.
 1. REMOVE COVER OF CUSTOM MVP POWER SUPPLY BY REMOVING 4 SCRRWS AT REAR OF UNIT. (SAVE SCREWS)
 2. FEED CABLES THROUGH COVER AND THROUGH OPENING IN REAR OF POWER SUPPLY.
 3. MAKE THE FOLLOWING CONNECTIONS FROM CABLES TO TB1901 AS SHOWN IN THE CONNECTION CHART BELOW:

FROM	COLOR	WIRE PAIR	TO
PI-1	BL	BL/BK	TB1901-1
PI-2	BK	R/BK	TB1901-2
PI-3	R	R/BK	TB1901-3
PI-4	BK	BK/W	TB1901-4
PI-5	BK	BK/G	TB1901-5
PI-6	G	BK/G	TB1901-6
PI-7	W	BK/W	TB1901-7
PI-12	BR	BR/BK	TB1901-8
PI-8	BK	BK/Y	TB1901-2
 4. ROUTE BOTH CABLES THROUGH CABLE CLAMPS AS SHOWN AND SECURE TO POWER SUPPLY WITH HARDWARE SUPPLIED.
 5. REPLACE COVER AND SCREWS SAVED FROM STEP 1.
 6. CONNECT PI901 TO J2 (MICROPHONE JACK) ON MOBILE RADIO.

(19D423923, Rev. 5)

INSTALLATION INSTRUCTION

CUSTOM MVP



(19D423615, Rev. 3)

INSTALLATION INSTRUCTIONS

MASTR EXECUTIVE II