

INSTRUCTIONS FOR HANDSET/HOOKSWITCH

(FOR MASTR[®] CONTROLLER OPTIONS 8582, 8583, 8584 & 8585)
 (FOR LOCAL CONTROLLER OPTIONS 8631, 8632, 8633 & 8634)
 (FOR MASTR EXECUTIVE II OPTIONS 9901 & 9902)
 (FOR CUSTOM MVP OPTIONS 1926 & 1927)

CONTENTS

DESCRIPTION	1
CIRCUIT ANALYSIS	2
OUTLINE DIAGRAM	4
WIRING DIAGRAMS	
MASTR CONTROLLER	5
LOCAL CONTROLLER	6
CUSTOM MVP	7
MASTR EXECUTIVE II	8
INSTALLATION INSTRUCTIONS	
MASTR CONTROLLER	9
LOCAL CONTROLLER	10
CUSTOM MVP	11
MASTR EXECUTIVE II	12

DESCRIPTION

The HANDSET/HOOKSWITCH OPTIONS shown in the chart contain the necessary hardware and wiring to install the Handset/Hookswitch. The left-side mounting options are shipped from the factory attached to the control unit case. The DESK/WALL Right Side mounting options are shipped unattached with the right side mounting bracket included as part of the kit.

The Handset/Hookswitch Options have a unique magnetic switch that is operated in conjunction with a switching transistor and relay to switch the audio from the speaker to the handset. The magnetic switch is closed when the handset is placed in the retaining cradle and opened when the handset is lifted from the cradle. The handset also has a transmit push-to-talk switch conveniently located in the center of the handset.

When the handset is in the cradle the magnetic switch S1 is closed grounding the Base of Q1, turning it off. With Q1 turned off the relay K1 is de-energized. The audio comes in at "AUDIO HI IN", passes through the closed contacts 8 & 9 of K1 and out at "AUDIO HI OUT" to the speaker.

When the handset is removed from the cradle the magnetic switch S1 is opened providing a high to the base of Q1, turning it on. With Q1 conducting the relay K1 is energized. The audio comes in at "AUDIO HI IN", passes through the closed contacts 9 & 10 of K1 through R2 to the RX section of the handset to ground. R1/R4 and R2 are impedance matching resistors for the Audio output transformer. The TX microphone is connected to the "MIC HI" and "MIC LO".

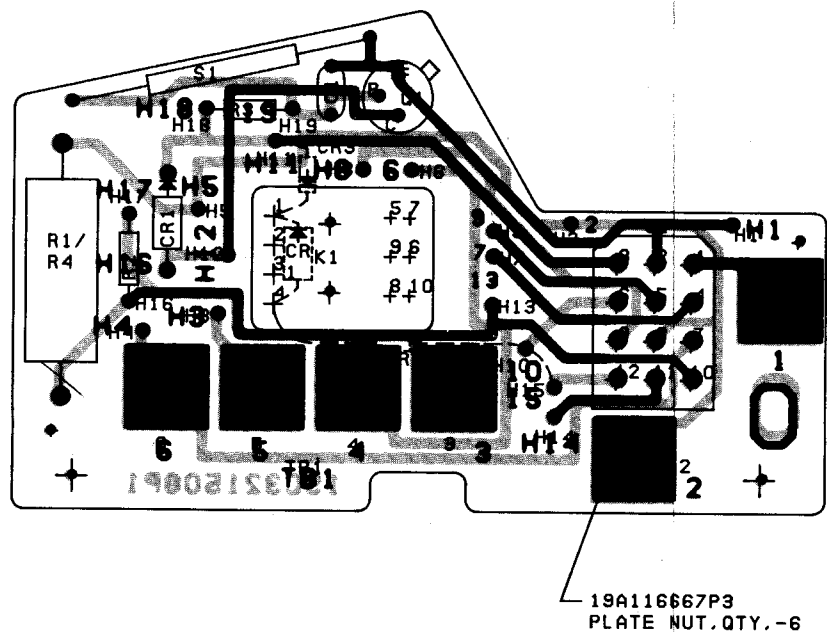
When the transmit push-to-talk button on the handset is pushed, a ground is put on the PTT lead, keying the transmitter.

CIRCUIT ANALYSIS

(Refer to the Wiring Diagram for the Unit).

CIRCUIT ANALYSIS

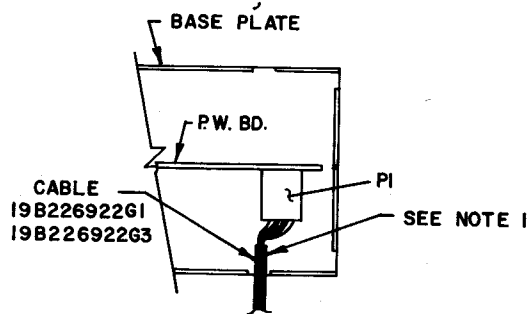
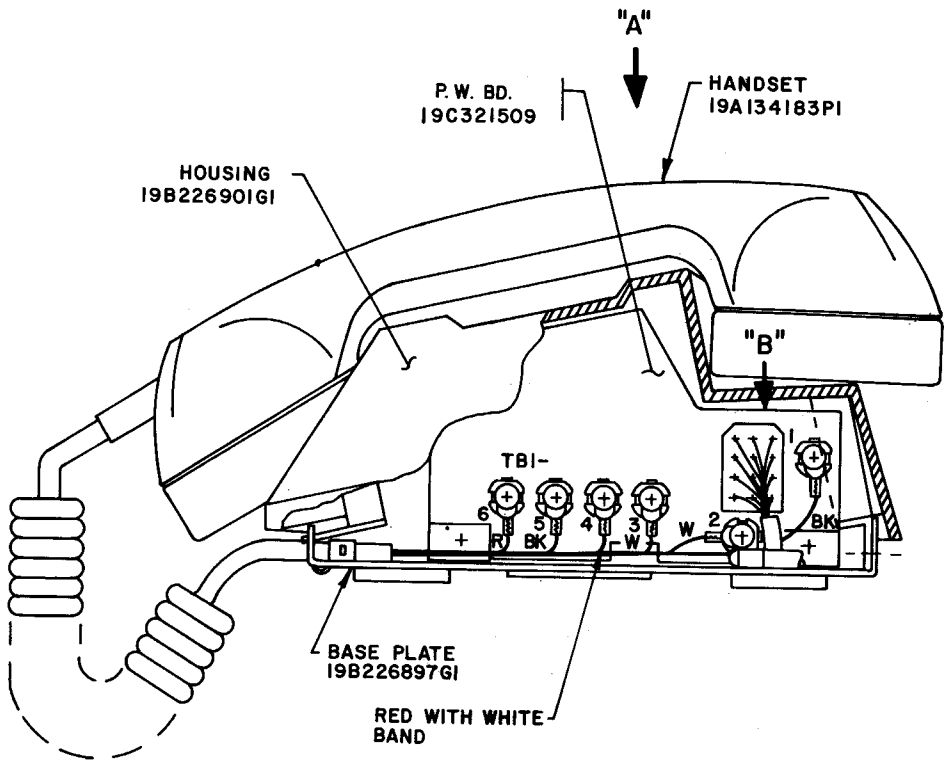
OPTION NUMBER	PRODUCT LINE	DESCRIPTION
8582 8631 9901	MASTR CONTROLLER MASTR LOCAL CON- TROLLER MASTR EXECUTIVE II	Deletes the standard 19B209458P1 micro- phone and adds the left side mount Hand- set/Hookswitch (attached).
8583 8632 9902	MASTR CONTROLLER MASTR LOCAL CON- TROLLER MASTR EXECUTIVE II	Deletes the Channel Guard 19B209459P1 microphone and adds the left side mount Handset/Hookswitch (attached).
8584 8633	MASTR CONTROLLER MASTR LOCAL CON- TROLLER	Deletes the standard 19B209458P1 micro- phone and adds the Desk/Wall right side mount Handset/Hookswitch (not attached).
8585 8634	MASTR CONTROLLER MASTR LOCAL CON- TROLLER	Deletes the Channel Guard 19B209459P1 microphone and adds the Desk/Wall right side mount Handset/Hookswitch (not attached).
1925	CUSTOM MVP	Deletes the 19C320270G1 microphone & 7141414G2 Hanger and adds the left side mount Handset/Hookswitch to the AC Power Supply.
1926	CUSTOM MVP	Adds the left side mount Handset/Hookswitch to the AC Power Supply.



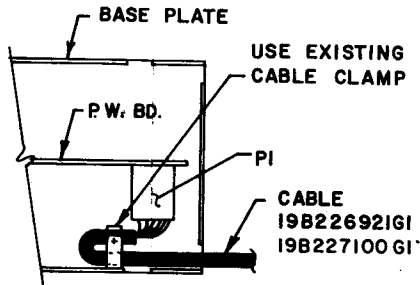
GROUP 1 FOR THE FOLLOWING CONNECTIONS SEE INTR. DIAG. 190423321			GROUP 2 FOR THE FOLLOWING CONNECTIONS SEE INTR. DIAG. 190423328		
FROM	TO	WIRE	FROM	TO	WIRE
H1	H2	DA	H3	H4	DA
H3	H5	DA	H6	K1-7	DA
H6	K1-7	DA	H7	K1-6	DA
H7	K1-6	DA	H9	K1-9	DA
H9	K1-9	DA	H10	K1-8	DA
H10	K1-8	DA	H11	K1-1	DA
H12	K1-4	DA	H12	K1-4	DA
H13	K1-10	DA	H13	K1-10	DA

(19C321839, Rev. 3)
(19B226778, Sh. 1, Rev. 0)
(19B226778, Sh. 2, Rev. 0)

OUTLINE DIAGRAM
HANDSET/HOOKSWITCH

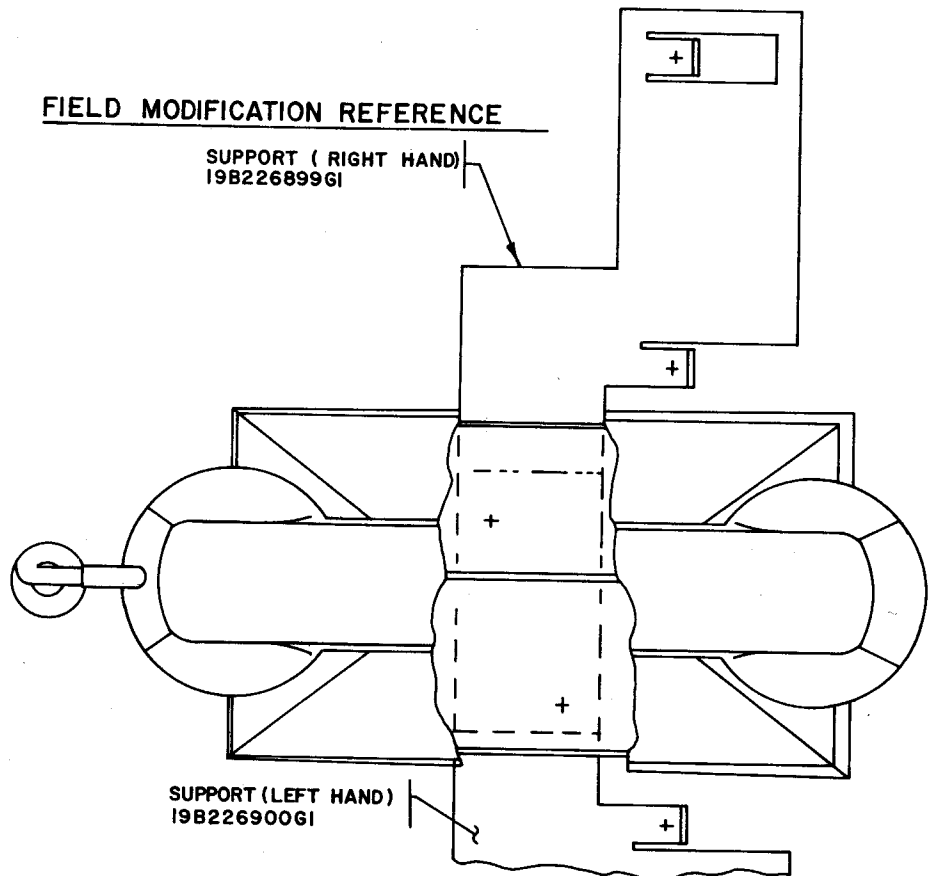


VIEW "B"
SHOWING CABLE ROUTING



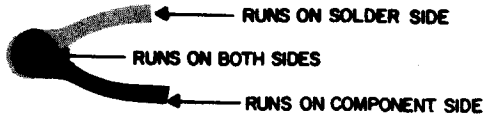
VIEW "B"
SHOWING CABLE ROUTING

FIELD MODIFICATION REFERENCE



VIEW "A"

NOTES:
1. DO NOT USE CABLE CLAMP.



PARTS LIST

LBI-4955A

HANDSET/HOOKSWITCH

SYMBOL	GE PART NO.	DESCRIPTION
		COMPONENT BOARD 19C321509G1
		----- CAPACITORS -----
C1	19A116080P1	Polyester: 0.01 μ f \pm 20%, 50 VDCW.
		----- DIODES AND RECTIFIERS -----
CR1	4037822P2	Silicon.
CR2	19A115250P1	Silicon.
CR3*	4037822P2	Silicon. Added by REV A.
		----- JACKS AND RECEPTACLES -----
J1	19A116647P6	Connector, printed wiring: 12 terminals, sim to Molex 09-18-5927.
		----- RELAYS -----
K1	19C307010P30	Armature: 24 VDC nominal, 2.0 w max operating, 520 ohms \pm 10% coil res, 2 form C contacts; sim to Allied Control T154X-1113.
		----- TRANSISTORS -----
Q1	19A115300P2	Silicon, NPN; sim to Type 2N3053.
		----- RESISTORS -----
R1	5493035P10	Wirewound: 3.5 ohms \pm 5%, 5 w; sim to Hamilton Hall Type HR.
R2	3R152P222K	Composition: 2.2K ohms \pm 10%, 1/4 w.
R3	3R152P562K	Composition: 5.6K ohms \pm 10%, 1/4 w.
		----- SWITCHES -----
S1	19A134193P1	Dry reed, relay: 1/4 amp at 100 v contact rating; sim to Gordos Corp MR 456.
		----- MISCELLANEOUS -----
	19A134183P1	Handset, transistorized dynamic, black; sim to Telephone Components TG-4. Includes Receiver Cartridge Telephone Components R-5 SR559, Transmitter cartridge Shure Brothers RPI17, switch Telephone Components 741.
	19B226901G1	Housing.
	19B226897G1	Base Plate.
	19B226900G1	Mounting plate. (Left side mount hookswitch).
	19B226899G1	Mounting plate. (Right side mount hookswitch).
	19B226921G1	Cable: approx 7 feet long. Includes Pl. (Right side mount hookswitch).
	19B226922G1	Cable: approx 3 feet long. Includes Pl. (Left side mount hookswitch).

*COMPONENTS ADDED, DELETED OR CHANGED BY PRODUCTION CHANGES

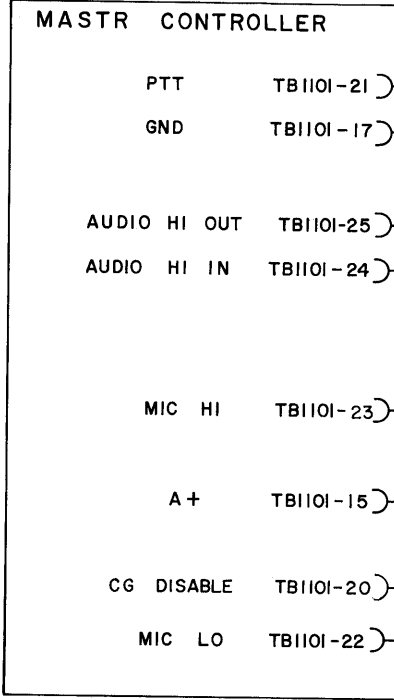
PRODUCTION CHANGES

Changes in the equipment to improve performance or to simplify circuits are identified by a "Revision Letter", which is stamped after the model number of the unit. The revision stamped on the unit includes all previous revisions. Refer to the Parts List for descriptions of parts affected by these revisions.

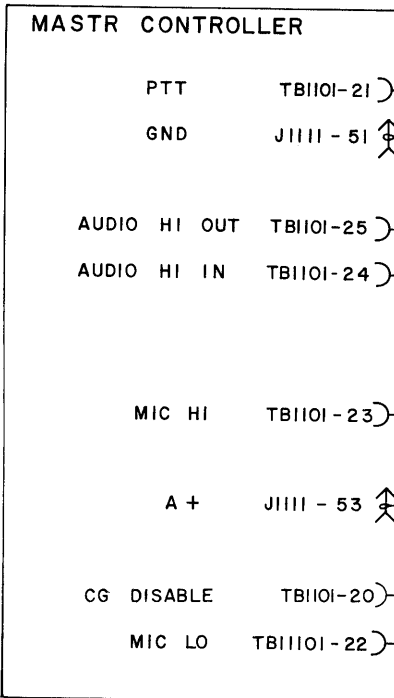
Component Board 19C321509G1

REV. A - To stop the Channel Guard monitor lamp from remaining lit at all times when used with the right-hand mount handset/hookswitch option, added CR3.

RIGHT SIDE MOUNT



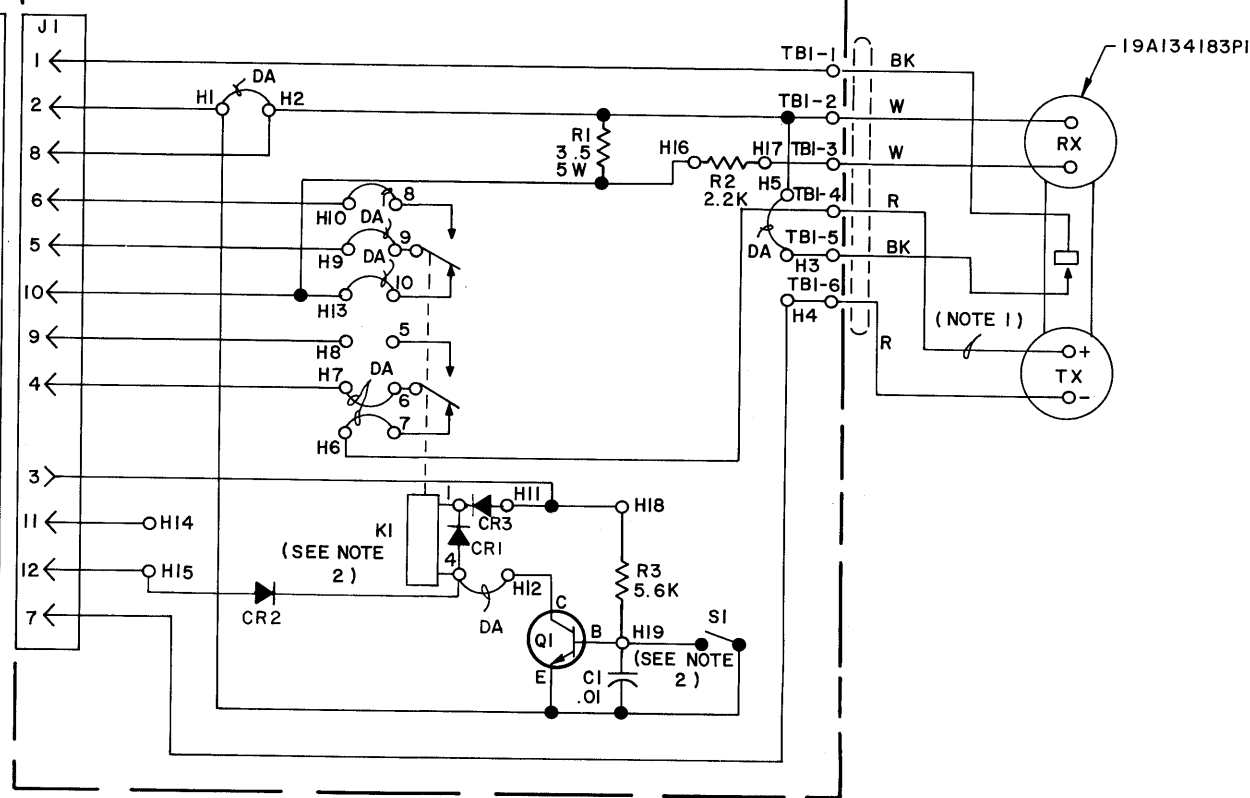
LEFT SIDE MOUNT



PL19B226921G1

PL19C321509G1

MASTR CONTROLLER



- NOTES:
1. RED WIRE WITH WHITE BANDS MUST CONNECT WITH TB1-4.
 2. SHOWN WITH HANDSET OFF HOOK.

ALL RESISTORS ARE 1/2 WATT UNLESS OTHERWISE SPECIFIED AND RESISTOR VALUES IN OHMS UNLESS FOLLOWED BY K=1000 OHMS OR MEG=1,000,000 OHMS. CAPACITOR VALUES IN PICOFARADS (EQUAL TO MICROMICROFARADS) UNLESS FOLLOWED BY UF= MICROFARADS. INDUCTANCE VALUES IN MICROHENRYS UNLESS FOLLOWED BY MH= MILLIHENRYS OR H=HENRYS.

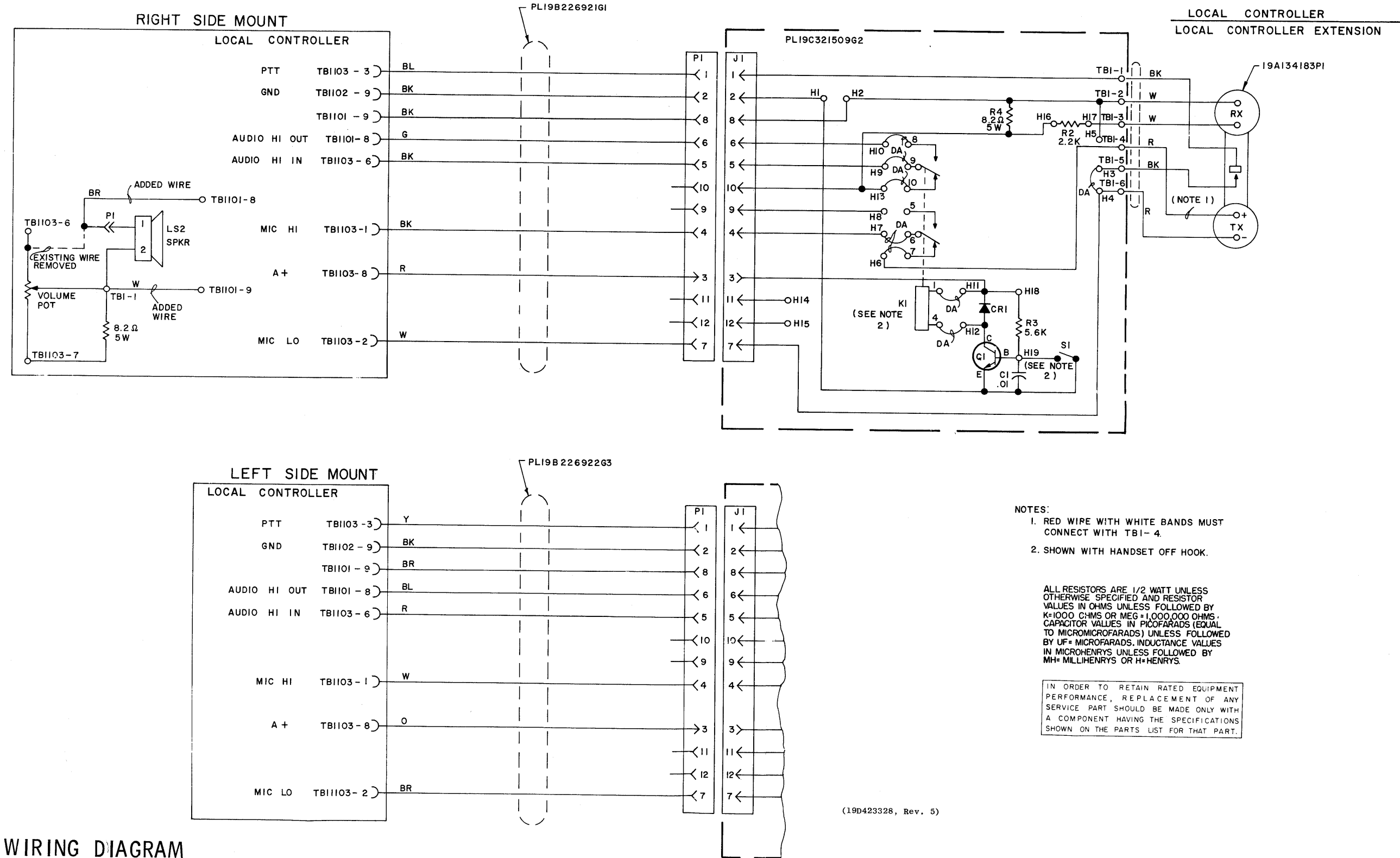
IN ORDER TO RETAIN RATED EQUIPMENT PERFORMANCE, REPLACEMENT OF ANY SERVICE PART SHOULD BE MADE ONLY WITH A COMPONENT HAVING THE SPECIFICATIONS SHOWN ON THE PARTS LIST FOR THAT PART.

MODEL NO
PL19C321509G1

REV LETTER
A

(19D423321, Rev. 5)

WIRING DIAGRAM
HANDSET/HOOKSWITCH
FOR MASTR CONTROLLER



PARTS LIST

LBI-4960
HANDSET/HOOKSWITCH

SYMBOL	GE PART NO.	DESCRIPTION
		COMPONENT BOARD 19C321509G2
		----- CAPACITORS -----
C1	19A116080P1	Polyester: 0.01 μ f \pm 20%, 50 VDC.
		----- DIODES AND RECTIFIERS -----
CR1	4037822P2	Silicon.
		----- JACKS AND RECEPTACLES -----
J1	19A116647P4	Connector, printed wiring: 12 terminals, sim to Molex 03-04-4121.
		----- RELAYS -----
K1	19C307010P30	Armature: 24 VDC nominal, 2.0 w max operating, 520 ohms \pm 10% coil res, 2 form C contacts; sim to Allied Control T154X-1113.
		----- TRANSISTORS -----
Q1	19A115300P2	Silicon, NPN; sim to Type 2N3053.
		----- RESISTORS -----
R2	3R152P222K	Composition: 2200 ohms \pm 10%, 1/4 w.
R3	3R152P562K	Composition: 5600 ohms \pm 10%, 1/4 w.
R4	5493035P52	Wirewound: 8.2 ohms \pm 10%, 5 w; sim to Hamilton Hall Type HR.
		----- SWITCHES -----
S1	19A134193P1	Dry reed, relay: 1/4 amp at 100 v contact rating; sim to Gordon Corp MR 456.
		----- MISCELLANEOUS -----
	19A134183P1	Handset, transistorized dynamic, black; sim to Telephone Components TG-4. Includes Receiver Cartridge Telephone Components R-5 SR555, Transmitter cartridge Shure Brothers RP117, switch Telephone Components 741.
	19B226901G1	Housing.
	19B226897G1	Base Plate.
	19B226900G1	Mounting plate. (Left side mount hookswitch).
	19B226899G1	Mounting plate. (Right side mount hookswitch).
	19B226921G1	Cable: approx 7 feet long. Includes Pl. (Right side mount hookswitch).
	19B226922G3	Cable: approx 3 feet long. Includes Pl. (Left side mount hookswitch).
	19A130453G1	Jumper Cable. (2 terminals).
	19A130453G2	Jumper Cable. (1 terminal).

*COMPONENTS ADDED, DELETED OR CHANGED BY PRODUCTION CHANGES

WIRING DIAGRAM

HANDSET/HOOKSWITCH
FOR MASTR LOCAL CONTROLLER

PARTS LIST

LBI-4955A

HANDSET/HOOKSWITCH

PRODUCTION CHANGES

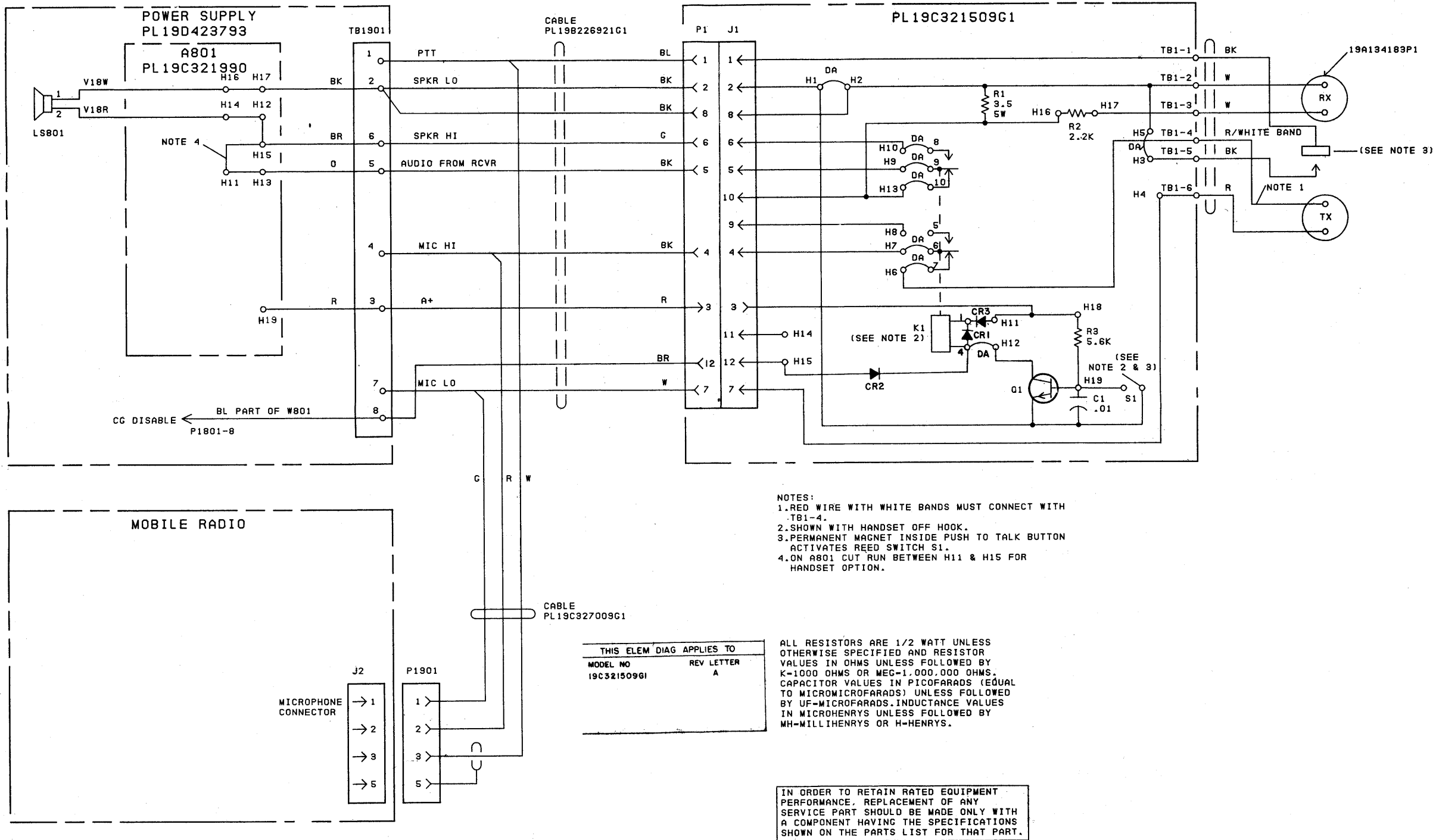
Changes in the equipment to improve performance or to simplify circuits are identified by a "Revision Letter", which is stamped after the model number of the unit. The revision stamped on the unit includes all previous revisions. Refer to the Parts List for descriptions of parts affected by these revisions.

Component Board 19C321509G1

REV. A - To stop the Channel Guard monitor lamp from remaining lit at all times when used with the right-hand mount handset/hookswitch option, added CR3.

SYMBOL	GE PART NO.	DESCRIPTION
		COMPONENT BOARD 19C321509G1
		----- CAPACITORS -----
C1	19A116080P1	Polyester: 0.01 μ f \pm 20%, 50 VDC.
		----- DIODES AND RECTIFIERS -----
CR1	4037822P2	Silicon.
CR2	19A115250P1	Silicon.
CR3*	4037822P2	Silicon. Added by REV A.
		----- JACKS AND RECEPTACLES -----
J1	19A116647P6	Connector, printed wiring: 12 terminals, sim to Molex 09-18-5927.
		----- RELAYS -----
K1	19C307010P30	Armature: 24 VDC nominal, 2.0 w max operating, 520 ohms \pm 10% coil res. 2 form C contacts; sim to Allied Control T154X-1113.
		----- TRANSISTORS -----
Q1	19A115300P2	Silicon, NPN; sim to Type 2N3053.
		----- RESISTORS -----
R1	5493035P10	Wirewound: 3.5 ohms \pm 5%, 5 w; sim to Hamilton Hall Type HR.
R2	3R152P222K	Composition: 2.2K ohms \pm 10%, 1/4 w.
R3	3R152P662K	Composition: 5.6K ohms \pm 10%, 1/4 w.
		----- SWITCHES -----
S1	19A134193P1	Dry reed, relay: 1/4 amp at 100 v contact rating; sim to Gordos Corp MR 456.
		----- MISCELLANEOUS -----
	19A134183P1	Handset, transistorized dynamic, black; sim to Telephone Components TG-4. Includes Receiver Cartridge Telephone Components R-5 SR555, Transmitter cartridge Shure Brothers RP117, switch Telephone Components 741.
	19B226901G1	Housing.
	19B226897G1	Base Plate.
	19B226900G1	Mounting plate. (Left side mount hookswitch).
	19B226899G1	Mounting plate. (Right side mount hookswitch).
	19B226921G1	Cable: approx 7 feet long. Includes P1. (Right side mount hookswitch).
	19B226922G1	Cable: approx 3 feet long. Includes P1. (Left side mount hookswitch).

*COMPONENTS ADDED, DELETED OR CHANGED BY PRODUCTION CHANGES.



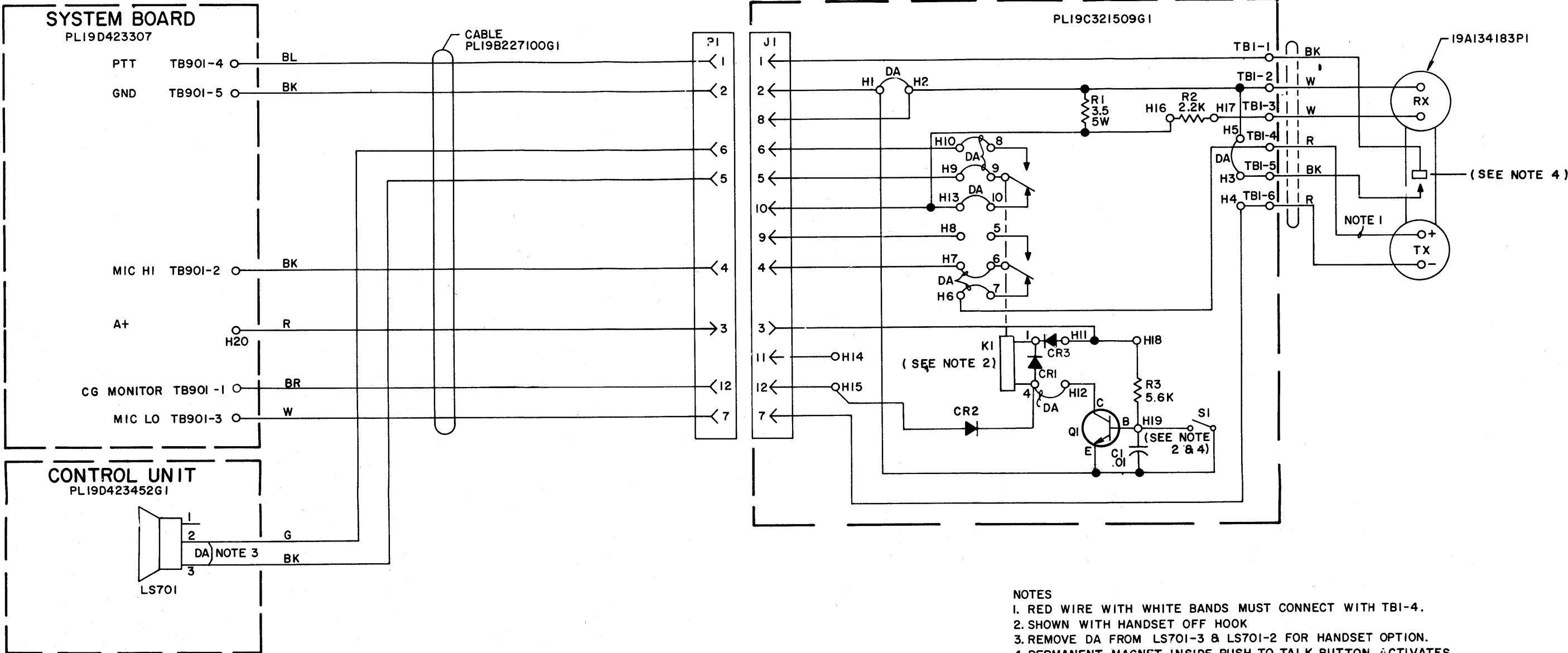
WIRING DIAGRAM

HANDSET/HOOKSWITCH
FOR CUSTOM MVP

PARTS LIST

LBI-4955A

HANDSET/HOOKSWITCH



- NOTES
1. RED WIRE WITH WHITE BANDS MUST CONNECT WITH TBI-4.
 2. SHOWN WITH HANDSET OFF HOOK
 3. REMOVE DA FROM LS701-3 & LS701-2 FOR HANDSET OPTION.
 4. PERMANENT MAGNET INSIDE PUSH TO TALK BUTTON ACTIVATES REED SWITCH S1.

IN ORDER TO RETAIN RATED EQUIPMENT PERFORMANCE, REPLACEMENT OF ANY SERVICE PART SHOULD BE MADE ONLY WITH A COMPONENT HAVING THE SPECIFICATIONS SHOWN ON THE PARTS LIST FOR THAT PART.

ALL RESISTORS ARE 1/2 WATT UNLESS OTHERWISE SPECIFIED AND RESISTOR VALUES IN OHMS UNLESS FOLLOWED BY K=1000 OHMS OR MEG=1,000,000 OHMS. CAPACITOR VALUES IN PICOFARADS (EQUAL TO MICROMICROFARADS) UNLESS FOLLOWED BY UF= MICROFARADS. INDUCTANCE VALUES IN MICROHENRYS UNLESS FOLLOWED BY MH= MILLIHENRYS OR H= HENRYS.

THIS ELEM DIAG APPLIES TO
MODEL NO 19C321509G1
REV LETTER A

(19D423380, Rev. 6)

SYMBOL	GE PART NO.	DESCRIPTION
		COMPONENT BOARD 19C321509G1
		----- CAPACITORS -----
C1	19A116080P1	Polyester: 0.01 μ f \pm 20%, 50 VDCW.
		----- DIODES AND RECTIFIERS -----
CR1	4037822P2	Silicon.
CR2	19A115250P1	Silicon.
CR3*	4037822P2	Silicon. Added by REV A.
		----- JACKS AND RECEPTACLES -----
J1	19A116647P6	Connector, printed wiring: 12 terminals, sim to Molex 09-18-5927.
		----- RELAYS -----
K1	19C307010P30	Armature: 24 VDC nominal, 2.0 w max operating, 520 ohms \pm 10% coil res, 2 form C contacts; sim to Allied Control T184X-1113.
		----- TRANSISTORS -----
Q1	19A115300P2	Silicon, NPN; sim to Type 2N3053.
		----- RESISTORS -----
R1	5493035P10	Wirewound: 3.5 ohms \pm 5%, 5 w; sim to Hamilton Hall Type HR.
R2	3R152P222K	Composition: 2.2K ohms \pm 10%, 1/4 w.
R3	3R152P562K	Composition: 5.6K ohms \pm 10%, 1/4 w.
		----- SWITCHES -----
S1	19A134193P1	Dry reed, relay: 1/4 amp at 100 v contact rating; sim to Gordos Corp MR 456.
		----- MISCELLANEOUS -----
	19A134183P1	Handset, transistorized dynamic, black; sim to Telephone Components TG-4. Includes Receiver Cartridge Telephone Components R-5 SR555, Transmitter cartridge Shure Brothers RP117, switch Telephone Components 741.
	19B226901G1	Housing.
	19B226897G1	Base Plate.
	19B226900G1	Mounting plate. (Left side mount hookswitch).
	19B226899G1	Mounting plate. (Right side mount hookswitch).
	19B226921G1	Cable: approx 7 feet long. Includes P1. (Right side mount hookswitch).
	19B226922G1	Cable: approx 3 feet long. Includes P1. (Left side mount hookswitch).

*COMPONENTS ADDED, DELETED OR CHANGED BY PRODUCTION CHANGES.

WIRING DIAGRAM

HANDSET/HOOKSWITCH
FOR MASTR EXECUTIVE II

MASTR CONTROLLER

THIS INSTRUCTION COVERS THE INSTALLATION OF A HANDSET HOOKSWITCH TO THE MASTR CONTROLLER.

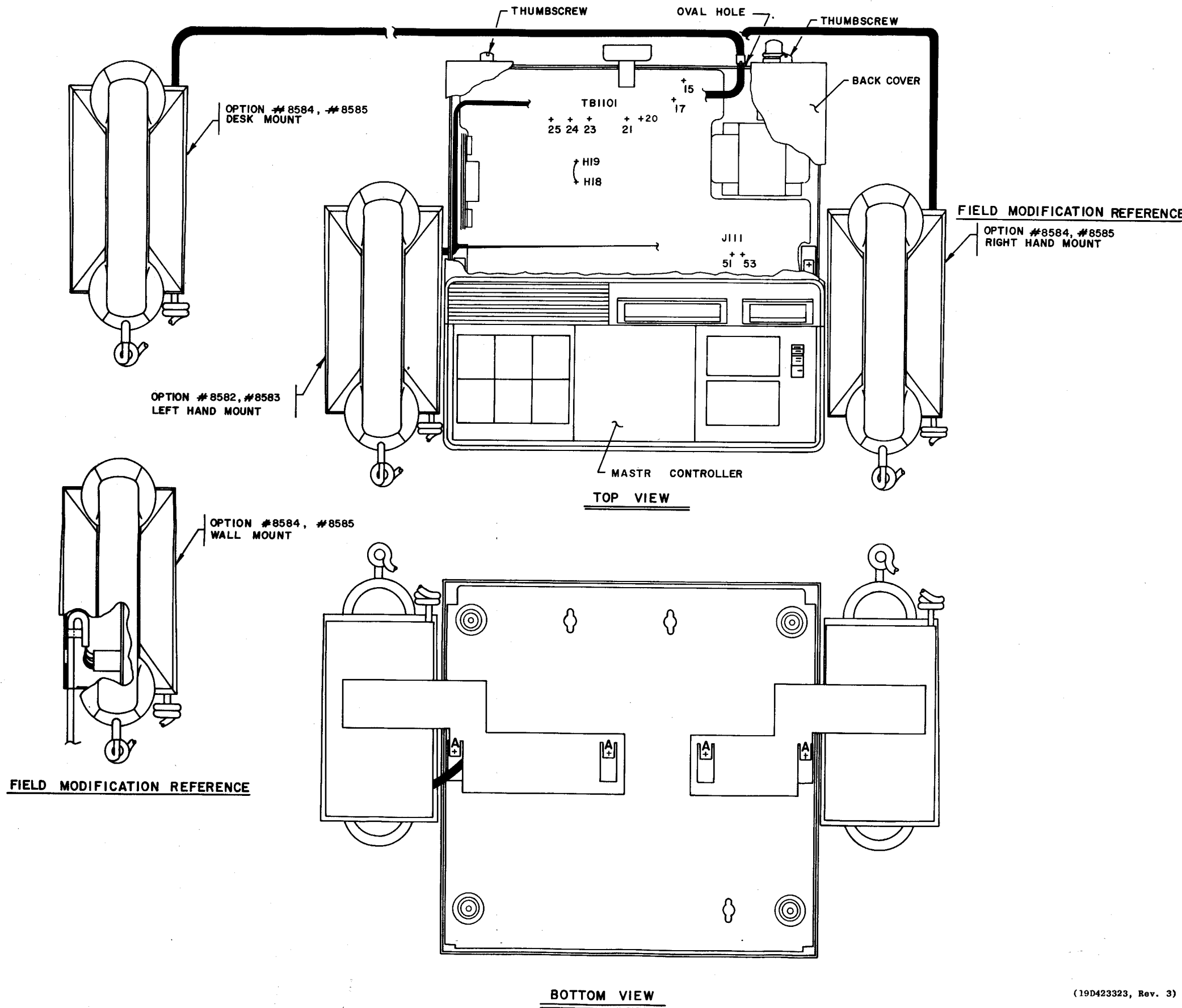
- 1 LEFT HAND MOUNT (OPTION #8582 & #8583)
1. REMOVE BACK COVER OF MASTR CONTROLLER BY LOOSENING TWO REAR THUMBSCREWS.
 2. TURN UNIT UPSIDE DOWN ON A SMOOTH SURFACE.
 3. REMOVE FOUR FRONT HOUSING SCREWS AT "A" AS SHOWN IN BOTTOM VIEW. SAVE SCREWS.
 4. ROUTE HANDSET CABLE THROUGH SLOT IN CONTROLLER BASE AS SHOWN IN BOTTOM VIEW.
 5. PLACE HANDSET IN POSITION SHOWN. MATCH HANDSET MOUNTING SLOTS WITH SLOTS IN CONTROLLER BASE.
 6. REPLACE SCREWS AT "A" SAVED FROM STEP 3.
 7. ROUTE CABLE INSIDE CONTROLLER AS SHOWN IN TOP VIEW.
 8. MAKE ELECTRICAL CONNECTIONS AS SHOWN IN CHART BELOW.
- | FROM | COLOR | WIRE | TO |
|-------|-------|-----------|-----------|
| PI-1 | Y | SF-24 | TB1101-21 |
| PI-2 | BK | SF-24 | J1111-51 |
| PI-3 | O | SF-24 | J1111-53 |
| PI-4 | W | WIRE PAIR | TB1101-23 |
| PI-7 | BR | | TB1101-22 |
| PI-5 | R | WIRE PAIR | TB1101-24 |
| PI-6 | BL | | TB1101-25 |
| PI-12 | G | SF-24 | TB1101-20 |
9. CLIP OUT DA JUMPER ON SYSTEM BOARD FROM H18 TO H19.
 10. REPLACE MASTR CONTROLLER BACK COVER AND TIGHTEN REAR THUMBSCREWS.

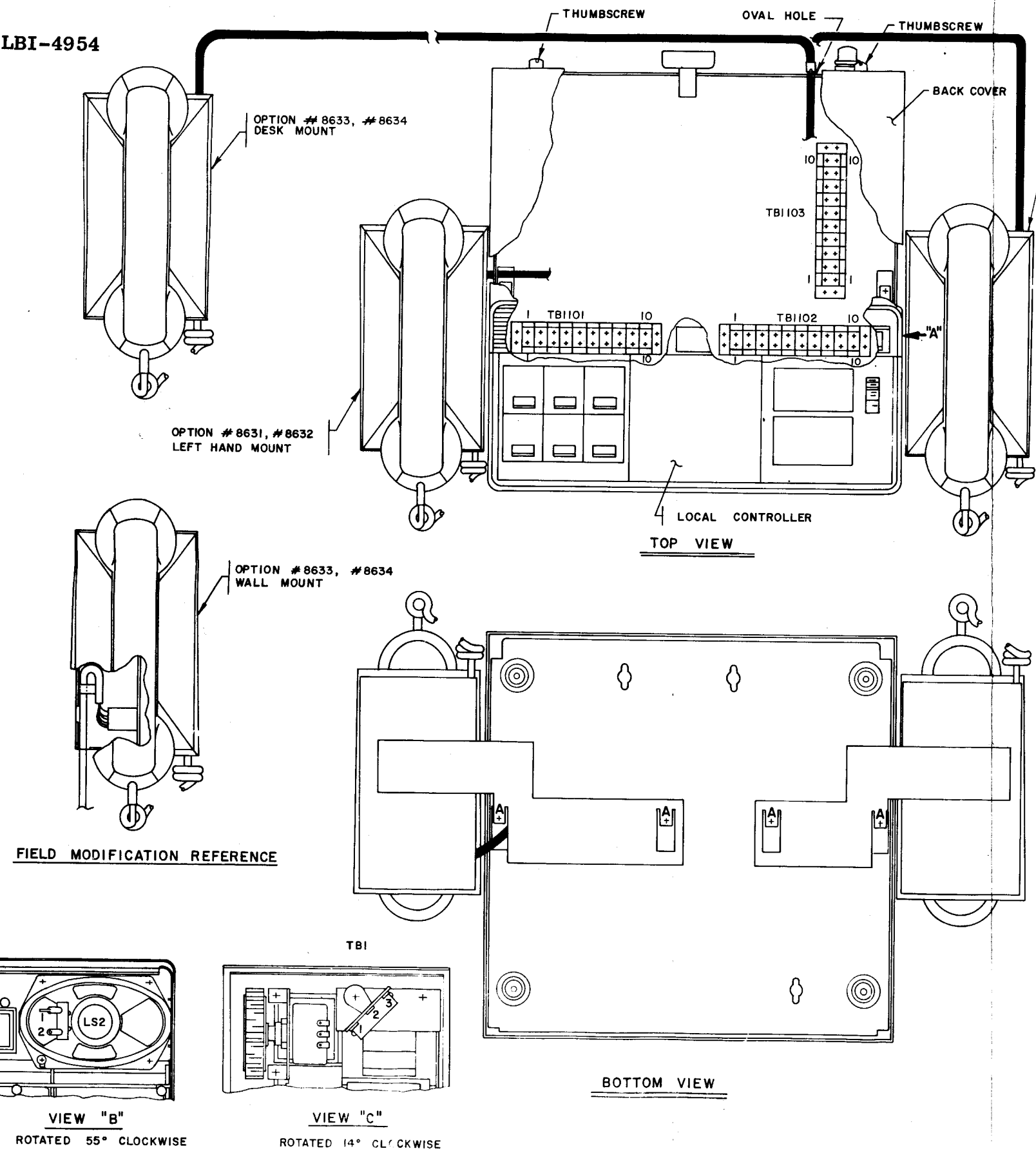
- 2 DESK/WALL/RIGHT HAND MOUNT (OPTION #8584 & #8585). *
1. REMOVE BACK COVER OF MASTR CONTROLLER BY LOOSENING TWO REAR THUMBSCREWS.
 2. ROUTE CABLE THROUGH OVAL HOLE IN CHASSIS AS SHOWN.
 3. CLIP IN STRAIN RELIEF IN SLOT ABOVE CABLE ENTRANCE.
 4. ROUTE CABLE AND MAKE ELECTRICAL CONNECTIONS AS SHOWN BELOW IN CHART.
- | FROM | COLOR | WIRE PAIR | TO |
|-------|-------|-----------|-----------|
| PI-1 | BL | R/BK | TB1101-21 |
| PI-3 | R | | TB1101-15 |
| PI-2 | BK | BK/W | TB1101-17 |
| PI-4 | BK | | TB1101-23 |
| PI-7 | W | BK/G | TB1101-22 |
| PI-5 | BK | | TB1101-24 |
| PI-6 | G | BK/Y | TB1101-25 |
| PI-12 | BR | | TB1101-20 |
| PI-8 | BK | | CUT OFF |
5. CLIP OUT DA JUMPER ON SYSTEM BOARD FROM H18 TO H19.
 6. REPLACE MASTR CONTROLLER BACK COVER AND TIGHTEN REAR THUMBSCREWS.

* NOTE: THIS OPTION IS SUPPLIED FOR DESK MOUNT APPLICATION. SEE APPROPRIATE VIEW FOR FIELD MODIFICATION REQUIRED FOR WALL MOUNT APPLICATION.

INSTALLATION INSTRUCTION

MASTR CONTROLLER





FIELD MODIFICATION REFERENCE

OPTION # 8633, # 8634
RIGHT HAND MOUNT

VIEW "A"

LOCAL CONTROLLER AND
LOCAL CONTROLLER EXTENSION

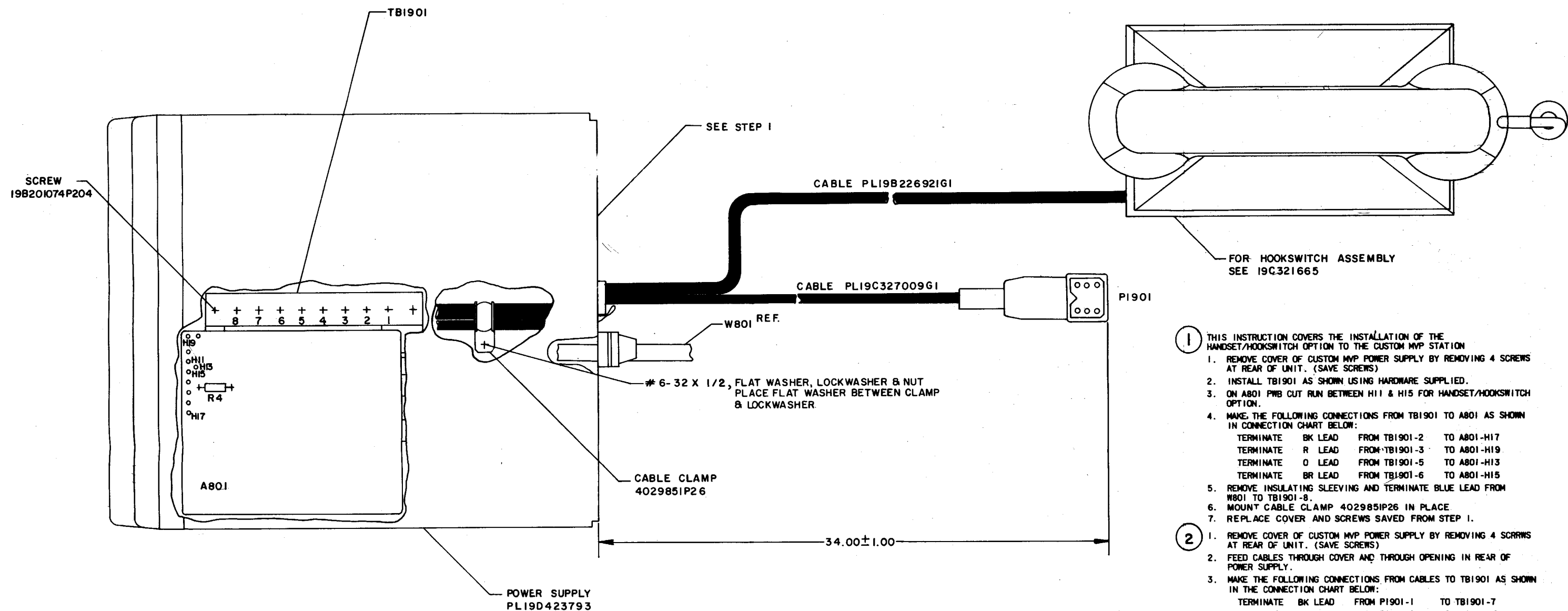
THIS INSTRUCTION COVERS THE INSTALLATION OF A HANDSET HOOKSWITCH TO THE
LOCAL CONTROLLER

1. LEFT HAND MOUNT (OPTION #8631 & #8632)
1. REMOVE BACK COVER OF LOCAL CONTROLLER BY LOOSENING TWO REAR THUMBSCREWS.
 2. TURN UNIT UPSIDE DOWN ON SMOOTH SURFACE.
 3. REMOVE FOUR FRONT HOUSING SCREWS AT "A" AS SHOWN IN BOTTOM VIEW. SAVE SCREWS.
 4. ROUTE HANDSET CABLE THROUGH SLOT IN CONTROLLER BASE AS SHOWN IN BOTTOM VIEW.
 5. PLACE HANDSET IN POSITION SHOWN. MATCH HANDSET MOUNTING SLOTS WITH SLOTS IN CONTROLLER BASE.
 6. REMOVE W-BK-O WIRE FROM LS2-1 & TIE TO EXISTING HARNESS (SEE VIEW "B").
 7. CONNECT BR WIRE SUPPLIED (PL19A130453G1) BETWEEN LS2-1 & TB1101-8.
 8. CONNECT WHITE WIRE SUPPLIED (PL19A130453G2) BETWEEN TB1-1 & TB1101-9. SOLDER AT TB1-1 (SEE VIEW "C").
 9. SPOT TIE TO HARNESS.
 10. MAKE ELECTRICAL CONNECTIONS AS SHOWN IN CHART BELOW.
- | FROM | COLOR | WIRE | TO |
|------|-------|-----------|----------|
| PI-1 | Y | SF-24 | TB1103-3 |
| PI-2 | BK | SF-24 | TB1102-9 |
| PI-3 | O | SF-24 | TB1103-8 |
| PI-4 | W | WIRE PAIR | TB1103-1 |
| PI-7 | BR | | TB1103-2 |
| PI-5 | R | WIRE PAIR | TB1103-6 |
| PI-6 | BL | | TB1101-8 |
| PI-8 | BR | SF-24 | TB1101-9 |
11. REPLACE SCREWS AT "A" SAVED FROM STEP 3.
 12. REPLACE LOCAL CONTROLLER BACK COVER AND TIGHTEN REAR THUMBSCREWS.

2. DESK/WALL/RIGHT HAND MOUNT (OPTION #8633 & #8634) *
1. REMOVE BACK COVER OF LOCAL CONTROLLER BY LOOSENING TWO REAR THUMBSCREWS.
 2. ROUTE CABLE THROUGH OVAL HOLE IN CHASSIS AS SHOWN.
 3. CLIP IN STRAIN RELIEF IN SLOT ABOVE CABLE ENTRANCE.
 4. ROUTE CABLE AND MAKE ELECTRICAL CONNECTIONS AS SHOWN BELOW IN CHART.
- | FROM | COLOR | WIRE | TO |
|-------|-------|-------------------------|----------|
| PI-1 | BL | PART OF WIRE PAIR BL/BK | TB1103-3 |
| PI-3 | R | PAIR | TB1103-8 |
| PI-2 | BK | R/BK | TB1102-9 |
| PI-4 | BK | PAIR | TB1103-1 |
| PI-7 | W | BK/W | TB1103-2 |
| PI-5 | BK | PAIR | TB1103-6 |
| PI-6 | G | BK/G | TB1101-8 |
| PI-8 | BK | PART OF WIRE PAIR BK/Y | TB1101-9 |
| PI-12 | BR | BR/BK | CUT OFF |
5. REMOVE W-BK-O WIRE FROM LS2-1 & TIE TO EXISTING HARNESS (SEE VIEW "B").
 6. CONNECT BR WIRE SUPPLIED (PL19A130453G1) BETWEEN LS2-1 & TB1101-8.
 7. CONNECT WHITE WIRE SUPPLIED (PL19A130453G2) BETWEEN TB1-1 & TB1101-9. SOLDER AT TB1-1 (SEE VIEW "C").
 8. SPOT TIE TO HARNESS.
 9. REPLACE LOCAL CONTROLLER BACK COVER AND TIGHTEN REAR THUMBSCREWS.
- * NOTE: THIS OPTION IS SUPPLIED FOR DESK MOUNT APPLICATION. SAME AS MASTR CONTROLLER.

INSTALLATION INSTRUCTION

LOCAL CONTROLLER



(19D423923, Rev. 5)

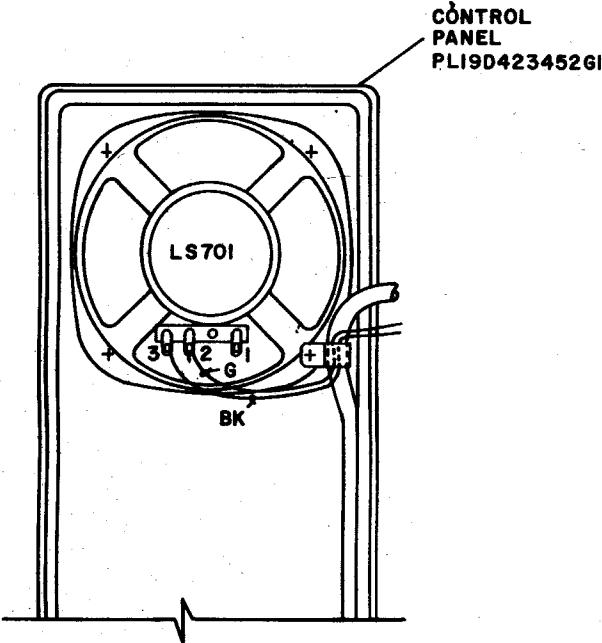
- 1** THIS INSTRUCTION COVERS THE INSTALLATION OF THE HANDSET/HOOKSWITCH OPTION TO THE CUSTOM MVP STATION.
1. REMOVE COVER OF CUSTOM MVP POWER SUPPLY BY REMOVING 4 SCREWS AT REAR OF UNIT. (SAVE SCREWS)
 2. INSTALL TB1901 AS SHOWN USING HARDWARE SUPPLIED.
 3. ON A801 PWB CUT RUN BETWEEN HI1 & HI5 FOR HANDSET/HOOKSWITCH OPTION.
 4. MAKE THE FOLLOWING CONNECTIONS FROM TB1901 TO A801 AS SHOWN IN CONNECTION CHART BELOW:

TERMINATE	LEAD	FROM	TO
TERMINATE	BK LEAD	FROM TB1901-2	TO A801-HI7
TERMINATE	R LEAD	FROM TB1901-3	TO A801-HI9
TERMINATE	O LEAD	FROM TB1901-5	TO A801-HI3
TERMINATE	BR LEAD	FROM TB1901-6	TO A801-HI5
 5. REMOVE INSULATING SLEEVING AND TERMINATE BLUE LEAD FROM W801 TO TB1901-8.
 6. MOUNT CABLE CLAMP 402985IP26 IN PLACE
 7. REPLACE COVER AND SCREWS SAVED FROM STEP 1.
- 2**
1. REMOVE COVER OF CUSTOM MVP POWER SUPPLY BY REMOVING 4 SCREWS AT REAR OF UNIT. (SAVE SCREWS)
 2. FEED CABLES THROUGH COVER AND THROUGH OPENING IN REAR OF POWER SUPPLY.
 3. MAKE THE FOLLOWING CONNECTIONS FROM CABLES TO TB1901 AS SHOWN IN THE CONNECTION CHART BELOW:

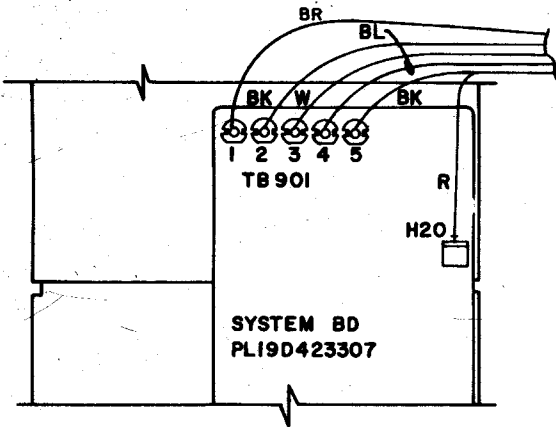
FROM	COLOR	WIRE PAIR	TO
P1-1	BL	BL/BK	TB1901-1
P1-2	BK	R/BK	TB1901-2
P1-3	R	R/BK	TB1901-3
P1-4	BK	BK/W	TB1901-4
P1-5	BK	BK/G	TB1901-5
P1-6	G	BK/G	TB1901-6
P1-7	W	BK/W	TB1901-7
P1-12	BR	BR/BK	TB1901-8
P1-8	BK	BK/Y	TB1901-2
 4. ROUTE BOTH CABLES THROUGH CABLE CLAMPS AS SHOWN AND SECURE TO POWER SUPPLY WITH HARDWARE SUPPLIED.
 5. REPLACE COVER AND SCREWS SAVED FROM STEP 1.
 6. CONNECT P1901 TO J2 (MICROPHONE JACK) ON MOBILE RADIO.

INSTALLATION INSTRUCTION

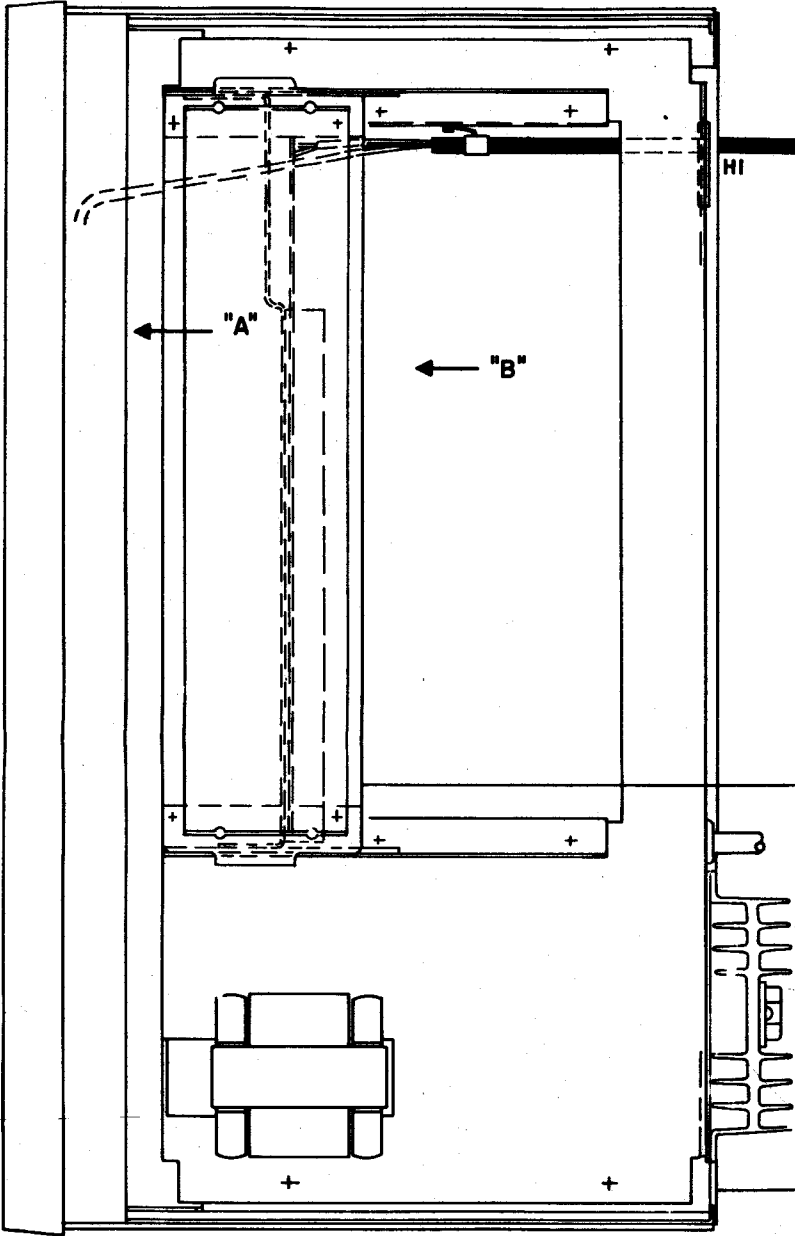
CUSTOM MVP



VIEW AT "A"
PARTIAL

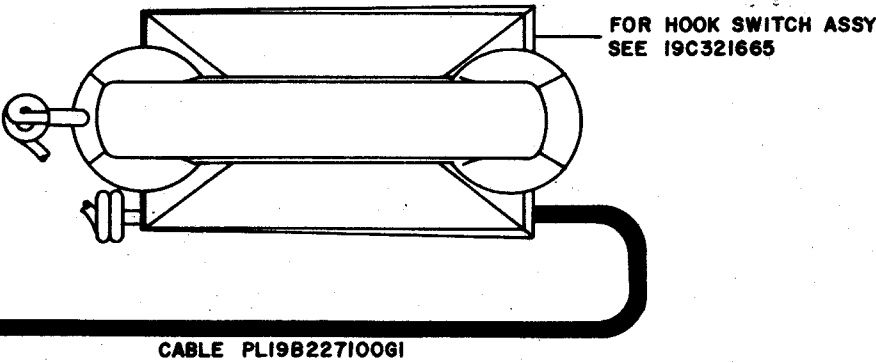


VIEW AT "B"
PARTIAL



RADIO FRAME
PL19B227065G1
SHOWN IN VERTICAL
POSITION.

POWER SUPPLY
PL19D423500G1



FOR HOOK SWITCH ASSY
SEE 19C321665

CABLE PL19B227100G1

THESE INSTRUCTIONS COVER THE INSTALLATION OF
HANDSET HOOKSWITCH OPTION TO MASTR EXEC II STATIONS
INSTRUCTIONS:

REFER TO WIRING DIAGRAM 19D423380.

1. ROUTE CABLE PL19B227100G1 AS SHOWN, THRU
HOLE 1 IN POWER SUPPLY CHASSIS. SECURE CABLE
TO CHASSIS AS SHOWN.
TERMINATE BL LEAD FROM PI-1 TO TB901-4 ON SYSTEM BOARD VIEW B
" BK " " PI-2 " -5 " " " "
" BK " " PI-4 " -2 " " " "
" W " " PI-7 " -3 " " " "
" R " " PI-3 " H20 " " " "
" BR " " PI-12 TO " -1 " " " "
2. REMOVE DB WIRE BETWEEN LS701-3 AND LS701-2
ROUTE THE TWO LONG G AND BK WIRES THRU THE CABLE
CLAMP ON LS701 THEN CONNECT THE GREEN WIRE TO
LS701-2 AND BLACK WIRE TO LS701-3

(19D423615, Rev. 3)

INSTALLATION INSTRUCTIONS

MASTR EXECUTIVE II

MDM RADIO, LTD.
2-WAY RADIO EQUIPMENT DISTRIBUTORS
1629 N. 31st AVENUE
MELROSE PARK, IL 60160
(708) 681-0300