

INSTALLATION INSTRUCTIONS FOR AUDIO LOCK-OUT MODIFICATION KIT

PL-19B201512-G1, OPTION 5835

Option 5835 provides a "Private Line" Service for the subscribers in the Simultaneous Duplex MTS System. Relay K1 (contained in Modification Kit 19B201512-G1) is connected in the Receiver (4ER25E10, F10) in such a manner that when the Busy Circuit is operated (busy channel condition), the audio to the handset earpiece is interrupted.

The following instructions are for modifying the Receiver in the field.

1. Clip the white wire to TB6-1 and tape.
2. Mount the strip terminal, TB101, using the IF can (T304) mounting hardware. See Figure 1.
3. Loosen the nut holding TB6 and orient the terminal board to facilitate mounting Relay K1. Connect K1-1 to TB101-2 and K1-2 to TB6-1. Retighten the nut.
4. Connect the diode (CR1) between TB3-4 and K1-4.
5. Clip the blue wire connected to TB1-1; cut the wire to the correct length and connect it to TB6-1.
6. Connect the 5" orange wire (provided in the Modification Kit) between TB1-1 and TB101-2.
7. Connect the 7" orange wire (provided in the Modification Kit) between TB20-2 and K1-3.

PARTS LIST FOR MODIFICATION KIT 19B201512

<u>Symbol</u>	<u>G-E Part No.</u>	<u>Description</u>
C1*	7489483-P16	Capacitor, electrolytic tubular: 100 μ f -10% +75% 15 VDCW; sim to Sprague 30D172A1. Added by Rev. A.
CR1		Diode, 1N1695
K1	19B200619-P1	Relay, dry reed: Res 250 ohms, normal operation 6 VDC; Sim to Rypinsky RY-0239-2.

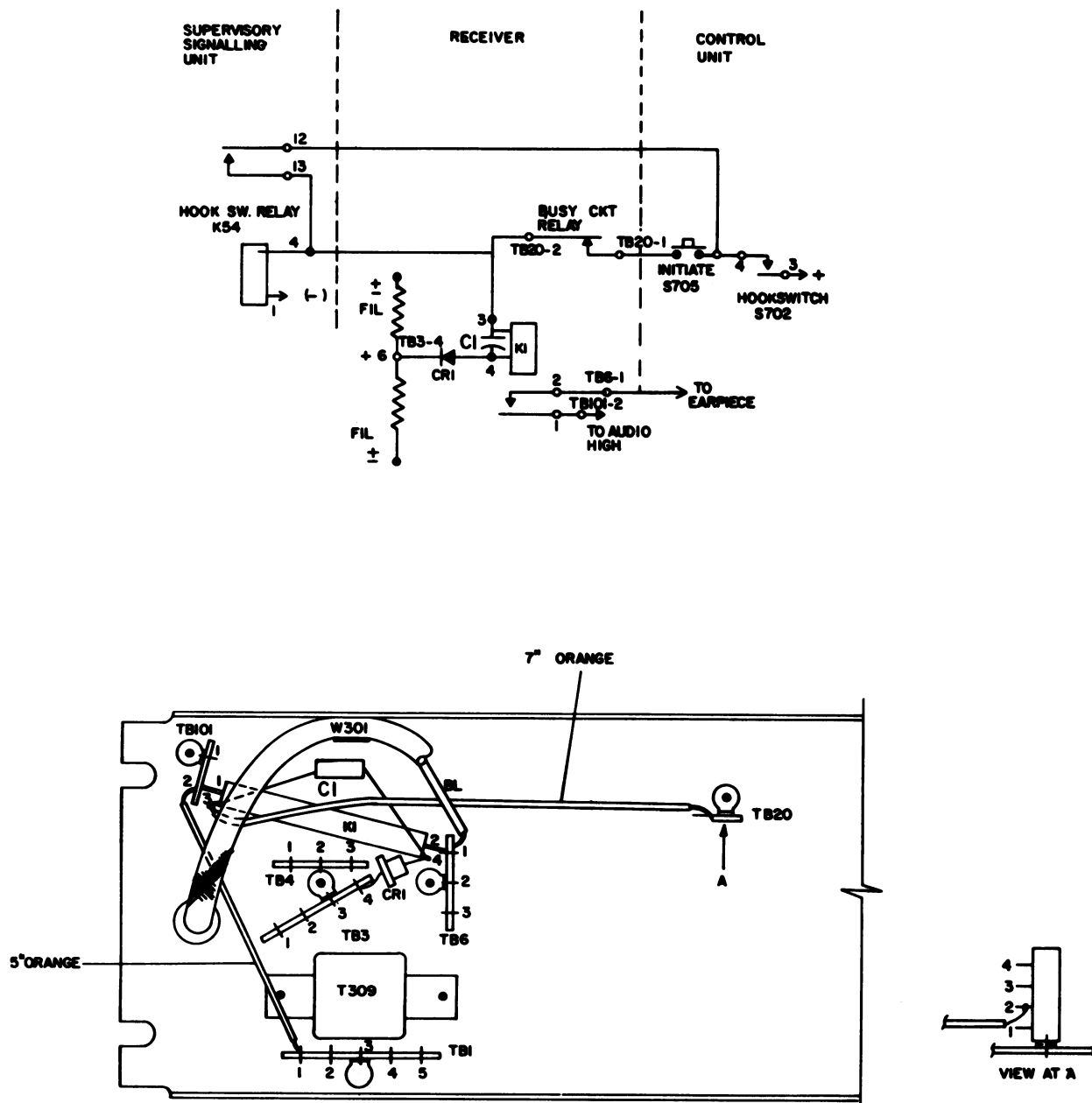


Figure 1A

COMMUNICATION PRODUCTS DEPARTMENT
 GENERAL ELECTRIC COMPANY
 LYNCHBURG, VIRGINIA