

## GLB MODEL 400B CHANNELIZER - ILLUMINATION KIT INSTALLATION INSTRUCTIONS

COMPLETE THE PANEL LAMP ASSEMBLY BEFORE STARTING ON THE MAIN CHASSIS ASSEMBLY

- ( ) 1. Lay a piece of cloth or cardboard on your work surface to protect the panel front from being scratched.
- ( ) 2. Place the chassis down with the panel front side down, and the top edge of the panel toward you as shown in the illustration pictorial on page 2.
- ( ) 3. Inspect the two 5-segment terminal strips for short-circuits between segments. If there are any unetched spots or whisker-shorts, cut the segments clear with a knife.

IN THE FOLLOWING STEPS TAKE CARE NOT TO CUT YOUR FINGERS ON THE EDGES OF THE TERMINAL STRIPS. THEY MAY BE SHARP. PLACE A PIECE OF PROTECTIVE CARDBOARD ON EACH STRIP BEFORE PRESSING IT HARD INTO PLACE.

- ( ) 4. Remove the backing from one of the strips and position it as shown for TS-1. When it is precisely centered and 1/8" from the top of the panel, press it into place.
- ( ) 5. Remove the backing from the other strip and press it into position as TS-2.
- ( ) 6. The dots at the end of the lamp leads shown in the pictorial indicate the points to be soldered. Without heating them longer than necessary, tin the segments and build up a small amount of solder at the places shown:

( ) TS-1, segment A	( ) TS-2, segment B
( ) TS-1, " B	( ) TS-2, " C
( ) TS-1, " C	( ) TS-2, " E
( ) TS-1, " D	
( ) TS-1, " E	

IN THE FOLLOWING STEPS, AFTER CLIPPING THE LAMP LEADS TO THE LENGTHS GIVEN, STRIP 1/8" OF INSULATION FROM EACH LEAD AND TIN.

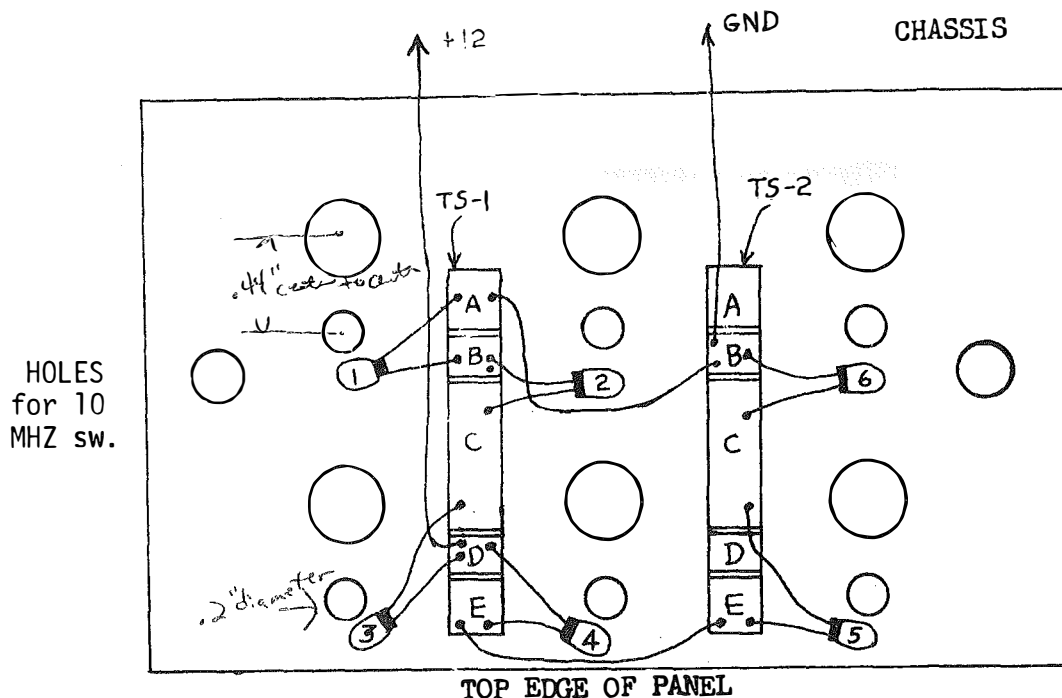
- ( ) 7. Clip the leads of one lamp to 5/8". Holding the lamp in the position shown for lamp #1 and solder the leads to TS-1 segments A and B as shown.
- ( ) 8. Install the remaining lamps in the same manner, as in the table below:

	lead lengths:	lamp number:	solder to:
( )	5/8"	2	TS-1, B and C
( )	3/4"	3	TS-1, C and D
( )	5/8"	4	TS-1, D and E
( )	5/8"	6	TS-2, B and C
( )	5/8"	5	TS-2, C and E

## GLB MODEL 400B CHANNELIZER - ILLUMINATION KIT INSTALLATION INSTRUCTIONS

- ( ) 9. Cut, strip and tin a 2" length of white-or-gray wire. Solder one end to TS-1, segment A and the other end to TS-2 segment B. Orient the lead as shown.
- ( ) 10. Cut, strip and tin a 10" length of red-or-orange wire. Solder one end to TS-1 segment D. Orient the lead along the bottom of the chassis and up the rear panel toward the feed-thru capacitors.
- ( ) 11. Cut, strip and tin a 10" length of white-or-gray wire. Solder one end to TS-2, segment B. Orient the free end parallel to and in the same directions as the wire in the previous step. The other ends of these wires will be connected later.
- ( ) 12. Cut, strip and tin a 2" length of red-or-orange wire. Solder one end to TS-1, segment E, the other to TS-2, segment E.

IN SUCCEEDING STEPS WHEN THE SWITCHES ARE MOUNTED TAKE CARE THAT NONE OF THE LAMPS OR WIRES ARE TRAPPED BENEATH THE SWITCHES BEFORE TIGHTENING THE SWITCH HARDWARE. The wire between terminal strips should not get between the lamps and the corresponding holes above the knobs.



LAMP INSTALLATION PICTORIAL. VIEW IS FROM THE INSIDE OF THE FRONT PANEL.

Measurement of lamp lead length: 5/8"



PROCEED TO MAIN CHASSIS ASSEMBLY SECTION.