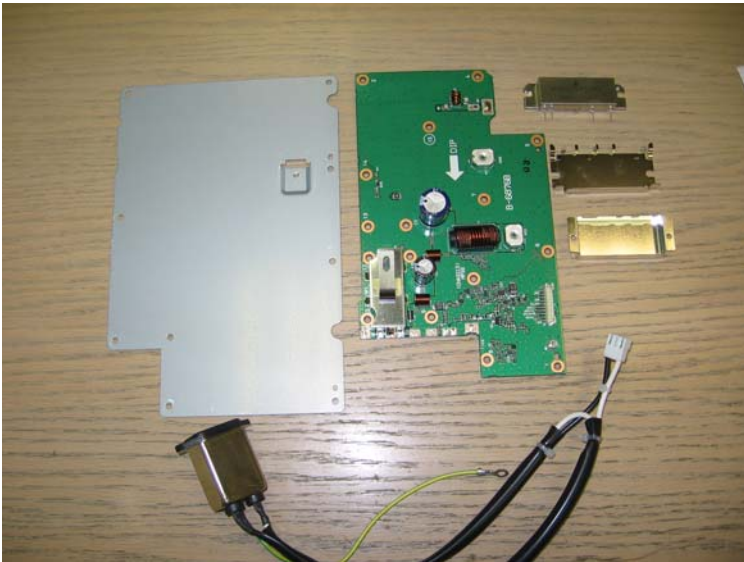


FR4000 PA Replacement

1. Remove old PA Board from FR4000. The new PA kit part number is 98415323.
2. See the following image. Verify there are 2 little shields, one big shield panel, one brick final, and the PA Board. The power cable is not required...you already have one.



3. Put the PA Board in place and screw it into place firmly into the repeater.
4. See the following image. Put transistor grease on bottom of shield where it contacts the chassis and put it in place. Solder the bottom shield onto the PA board.



Note: Board is shown outside of repeater for clarity.

5. Put a layer of white transistor grease on the bottom shield so it will contact the final brick.
 Note: There is now grease on both sides of the shield.
6. See the following image. Set the Final "Brick" into the bottom shield, align the pins and screw holes, and solder it onto the PA Board.



7. See the following image. Set the top shield in place and screw the Bottom shield, PA Brick, and Top shield in place.



8. Put large shield panel over the PA enclosure.
9. Reassemble repeater cover.
10. Go to the set mode or adjust mode of the repeater (explained at the dealer B2B site) and adjust the power output for High, L2, and L1 using a direct connection (or very short test cable) between the repeater and a certified, calibrated wattmeter.
11. Go to Maker Reserve Mode (specifically following the Maker Reserve Instructions on the B2B) and set the "On Mute Timer" to 0.000. Replacement is complete.