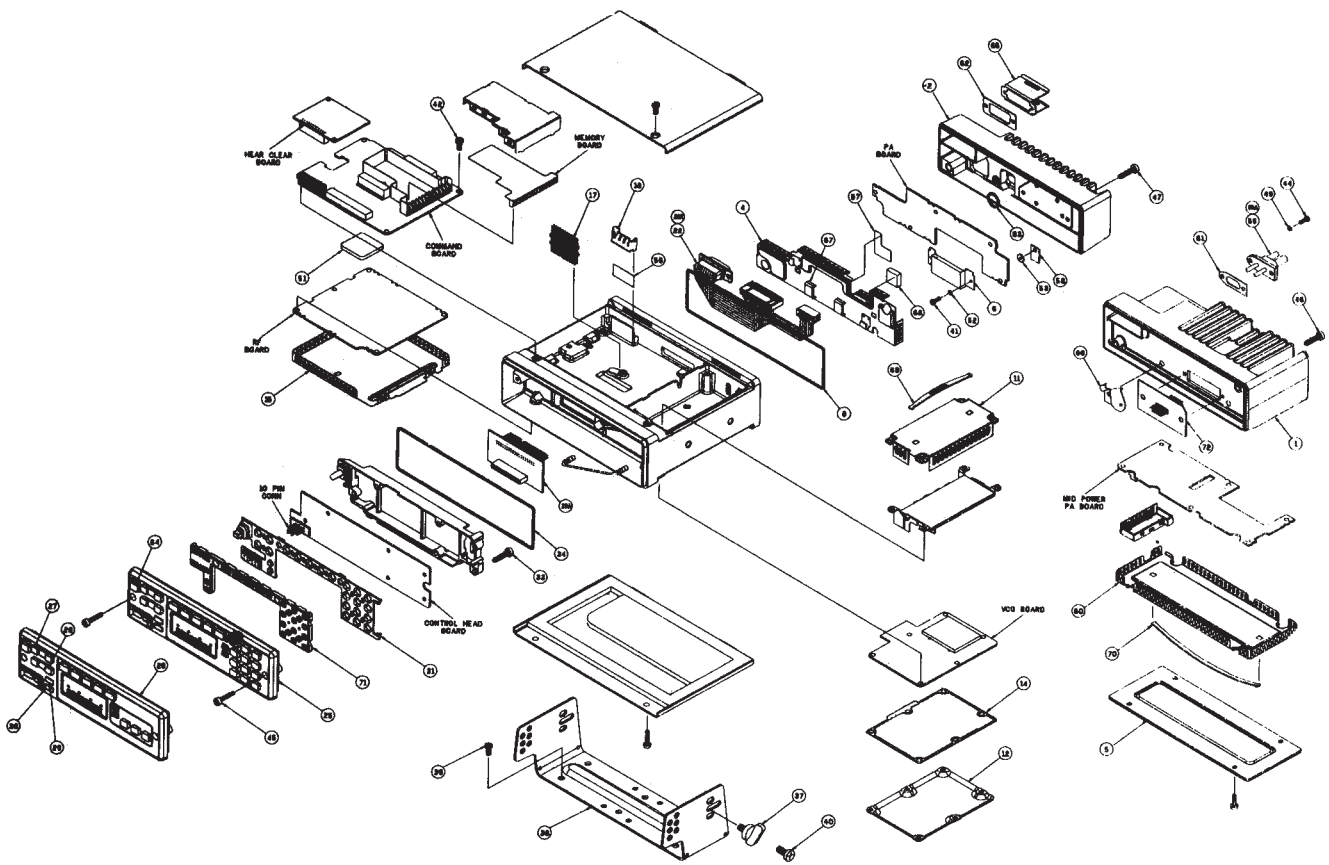


SPECTRA Series

Parts List



SPECTRA Series

Parts List

REF. NO.	PART NO.	DESCRIPTION	REF. NO.	PART NO.	DESCRIPTION
1	2680010M02	Heatsink, 30-watt	40	0310908B08	Screw, machine, instl hrdwr (5.0 x 0.8 x 10) (4)
2	2680009M03	Heatsink, 12-watt	41	0310911A11	Screw, machine (3.0 x 0.5 x 8.0); 12W-3 , 30W-5 used
3	2680105N01	Shield, 30-watt PA board	42	---	Screw, tapping (3.5 x 0.6 x 8.0) (board mtg)
4	2680011M01	Shield, 12-watt PA board	44	0380043L01	Screw, metric (3.0 x 10); 44 used
5	1580048N01	Cover, 30-watt PA	45	0380077M01	Screw, control head mount; 2 used
6	---	Shield, power module	46	0380077M02	Screw, hex socket (30-watt); 2 used
8	---	Gasket, heatsink	47	0380077M03	Screw, hex socket (12-watt); 2 used
11	1580098L01	Shield, receiver front end	48	---	Screw (3.5 x 0.6 x 46)
12	1580097L01	Cover, VCO board	49	0400131974	Washer, flat (.130 x .312 x .030); 2 used
14	3280247N01	Gasket, VCO	50	0480017F01	Washer, pivot; 2 used
15	1580099L01	Shield, RF board	51	7582200H01	Pad; 3 used
17	2880260M01	Header, floating	52	---	Washer, compression; 3 used
18	4280007M01	Clip, regulator	53	0484180C01	Washer, shoulder
22	3080239N02	Cable, PA ribbon	55	0980272N02	Connector, POW
25	0180016R09	Housing, front cover, with keypad	56	---	Insulator, regulator
26	1580010P02	Housing, front cover, without keypad	58	---	Insulator, alumina
27	3805670X04	Pushbutton Rocker, "MODE"	60	2680186M01	Shield, 30-watt PA
28	3805670X03	Pushbutton Rocker, "VOLUME"	61	3280015M01	Gasket, power connector
29	3880092J01	Key, "DIM"	62	3280088M01	Gasket, accessory connector
30	3880092J02	Key, "HOME"	64	3880227M04	Cap. On/Off Switch
31	7580189L03	Keypad	65	4280016M03	Clip, accessory connector
33	0310945A14	Screw, tapping; 6 used	67	4280265M02	Clip, coax, 12-watt PA; 2 used
34	3280289L02	Gasket, housing	69	5584300B01	Handle; 8 used
37	0384244C06	Screw, machine, wing (5.0 x 0.8 x 10)	70	5584300B04	Handle
38	0780086N02	Trunnion, mounting	71	6180017S01	Lightpipe
39	0300136756	Screw, tapping, instl hrdwr (10-16 x 5/8) (6)	72	6480108R01	Assembly, PA feedthrough, 30-watt

SPECTRA Series

Mobile Accessories

Microphones



HMN1080A Standard Palm Microphone

HMN1053B DTMF Microphone (not compatible w/astro digital spectra)

5084898K10 Noise Cancelling Microphone

HMN1061A Palm Microphone for use with astro digital spectra W9 radio

HMN1050D Desk Top Microphone (for control station operation)

HLN1220B Handset with Hang Up Box

HMN1079A Water Resistant Palm Microphone



HLN1220B

Sirens

H1500A Siren/Public Address (steady tone operates via button on control head)

H1336A Siren/Public Address, provides hi-lo, yelp, and airhorn tones controlled through supplemental housing

H1337A Public Address Only

Speakers

Speaker for Siren and Public Address



TDN6253A

TDN6251A Siren Speaker Round with Chrome Finish

TDN6252A Siren Speaker Rectangular with Chrome Finish

TDN6253A Siren Speaker Underhood with Grey Finish

TDN6254A Siren Speaker Round with Grey Finish



TDN6254A

Speakers



External Speaker

Provides Audio for High Ambient Noise Environments

HSN4018B External Speaker

Control Station Accessories

HPN4001B Control Station Power Supply

HKN4139A Power Cable

HLN6042A Control Station Tray

HMN1050D Desktop Microphone



Emergency Switch

Enables user to send an emergency message to a console, where their unit ID can be displayed and an alarm sounded.

HLN5131C External Emergency Button

HLN5113B Emergency Footswitch



HLN5113B

SPECTRA Series

Accessories, Antennas

Mounting Hardware

Quick Release Side Mount

RLN4074A Quick Release Side Mount Kit, includes radio mount, vehicle mount, and mounting hardware



RLN4074A

Quick Release Side Mount Accessories

RLN4075A Radio Mount with Hardware

RLN4076A Vehicle Mount with Hardware

RLN4077A Angle Bracket with 20° Fixed Angle and 50° Swivel

RLN4078A Flat Bracket with 50° Swivel



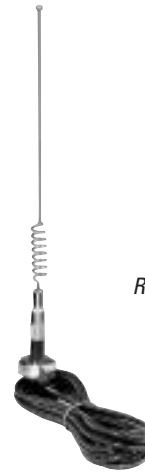
HLN6025A

Miscellaneous Hardware

HLN6025A Key Lock Mount

HLN6008A Remote Mount Kit, with 17 Foot Cable

Antennas



RRA4935A



HAE4003A

UHF

HAE4002A 1/4 Wave, roof top (403-430 MHz)

HAE4003A 1/4 Wave, roof top (450-470 MHz)

HAE4004A 1/4 Wave, roof top (470-512 MHz)

HAE4010A 3.5dB, roof top (406-420 MHz)

HAE4011A 3.5dB, roof top (450-470 MHz)

HAE4012A 3.5dB, roof top (470-495 MHz)

HAE4013A 3.5dB, roof top (494-512 MHz)

Antennas

800 MHz

HAF4002A 1/4 Wave, roof top (806-900 MHz)

RRA4983A 3dB, roof top (806-900 MHz)

900 MHz

RRA4935A 3dB, roof top w/14 ft. cable (890-960 MHz)

RAF4003ARM 3dB, roof top w/22 ft. cable (890-960 MHz)

VHF

HAD4006A 1/4 Wave, roof top (136-144 MHz)

HAD4007A 1/4 Wave, roof top (144-152 MHz)

HAD4008A 1/4 Wave, roof top (150.8-162 MHz)

HAD4009A 1/4 Wave, roof top (162-174 MHz)

RAD4010ARB 3dB, roof top (136-174 MHz)

SPECTRA Series

Service Tools, Aids

Battery Cable Adapter

6680388A13 Side Mount Battery
Cable Adapter



Service Tools

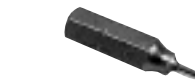


Torque Screwdriver

Measures the amount of torque being applied. Recommended for precise radio assembly. Bits must be ordered separately.

RSX4043A Adjustable Torque
Screwdriver

- 6680387A70** T-6 Torx Bit
- 6680387A72** T-8 Torx Bit
- 6680387A74** T-10 Torx Bit
- 6680387A75** T-15 Torx Bit
- 6680387A77** T-25 Torx Bit



Magnetic Screwdriver

0180320B16 Magnetic Screwdriver Set with Bits



Insertion and Extraction Tool

Installs and/or removes wires from
accessory connector.

6680163F01 Insertion and Extraction
Tool

Hex L-Shaped Key Set

Recommended for front panel and PA removal/installation. 10 piece set from 1.27mm to 6mm.

0180370B87 Metric Hex L-Shaped Key Set

Service Tools

Crimping Tool

For custom installations
requiring crimping of Mini-
UHF RF connector

6680388A26 Crimping Tool



Service Aids

Programming Software

Utilizing your personal computer, the software enables you to add or reprogram frequencies as your requirements change. Compatible with IBM XT, AT, Model 30, 50, 60 and 80. Requires Radio Interface Box and appropriate cables; must be ordered separately.

Conventional

RVN4001N Programming Software, 3-1/2" Diskette (includes binder and manual)

Railroad

RVN4099B Programming Software, 3-1/2" Diskette (includes binder and manual)

Radio Interface Box

Links radio programming cable and computer interface together. Provides required voltage shift to enable communications between radio and computer. Requires computer interface cable, radio programming cable, and a 9 volt snap type battery (6082728J01) or wall mount power supply. Order separately.

RLN4008E Radio Interface Box



SPECTRA Series

Service Aids, Manuals

Service Aids



0180357A57

Wall Mounted Power Supply

Used to supply power to Radio Interface Box.

0180357A57 Wall Mounted Power Supply (110 volts)

0180358A56 Wall Mounted Power Supply (220 volts)

RF Service Cables

3080373B25 RF Injection Board Output Cable. Connects to the RX injection output of the VCO assembly for testing RF injection level

3080373B26 BNC (M) to SMB (M) Cable

3080373B41 BNC (F) to Taiko-Denki (M) Cable

3080373B27 BNC (M) to Taiko-Denki (F) Adapter

TKN8531C Key-Variable Loader Cable

5880384G68 SMA to BNC Adapter

5880367B21 Mini-UHF Male to 'N' Female Adapter

Service Aids

Computer Interface Cable

Used to connect computer's serial port to Radio Interface Box.

3080369B71 Computer Interface Cable, RIB to 25 pin D

3080369B72 Computer Interface Cable, RIB to 9 pin D

Programming Cable

Required to program radio, acts as a link between RIB box and Radio.

3080369B73 Programming Cable

Service Manuals

6881076C20 Astro Digital SPECTRA Basic Service Manual, VHF, UHF, 800 MHz

6881076C25 Astro Digital SPECTRA Detailed Service Manual, VHF, UHF, 800 MHz

6880101W33 SPECTRA Detailed Service Manual

6881074C45 SPECTRA Service Manual, 800 MHz

6880101W37 SPECTRA Service Manual, 900 MHz

6881070C95 SPECTRA Service Manual, VHF

6880101W39 SPECTRA Service Manual, UHF

6880102W33 SPECTRA Service Manual, Securenet