

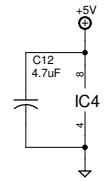
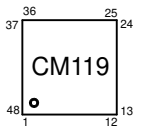
Note A:

Don't bridge pins 1&2.
 Each audio output pin can be configured in the AllStar software.[txmixa=] & [txmixb=]
 Either output can be set for: no, CTCSS, voice, or composite.
 Left [txmixa] (Pin 2) can be used when connecting to a radio's mic input.
 Right [txmixb] (Pin 1) is low-pass filtered to eliminate sampling noise when
 this pin is connected directly to a modulator. (9600 baud input)

In some situations and with some radios, it is desired to use these pins separate - one for
 CTCSS tones (direct to the modulator) and one for voice. (connected to the mic input)

Note B:

Pin 3 is a COS only or CTCSS/COS composite input.
 Pin 4 is a CTCSS only input.
 Using BOTH the COS and CTCSS inputs with separate signals is useful when you want to have
 the ability to select COS/CTCSS squelch access mode via software.



- 1 - [txmixb] (tone) audio to TX (See Note A)
- 2 - [txmixa] (voice) audio to TX (See Note A)
- 3 - COS logic from RX (See Note B)
- 4 - CTCSS logic from decoder (See Note B)
- 5 - PTT to TX
- 6 - Discriminator audio from RX
- 7 - Spare (could use to remote HeartBeat (HB) LED
- 8 - Ground
- 9 - Ground

LoopBack Test Plug: Connect 3, 4 & 5 1 to 6 thru 10K resistor 2 to 6 thru 10K resistor	Repeater-Builder.com		
	TITLE: RB_RIM_Lite		
	Document Number:	N3XCC	REV: A
	Date: 10/15/2019 1:42:50 PM	Sheet: 1/1	